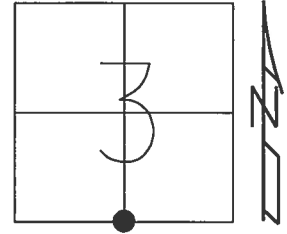


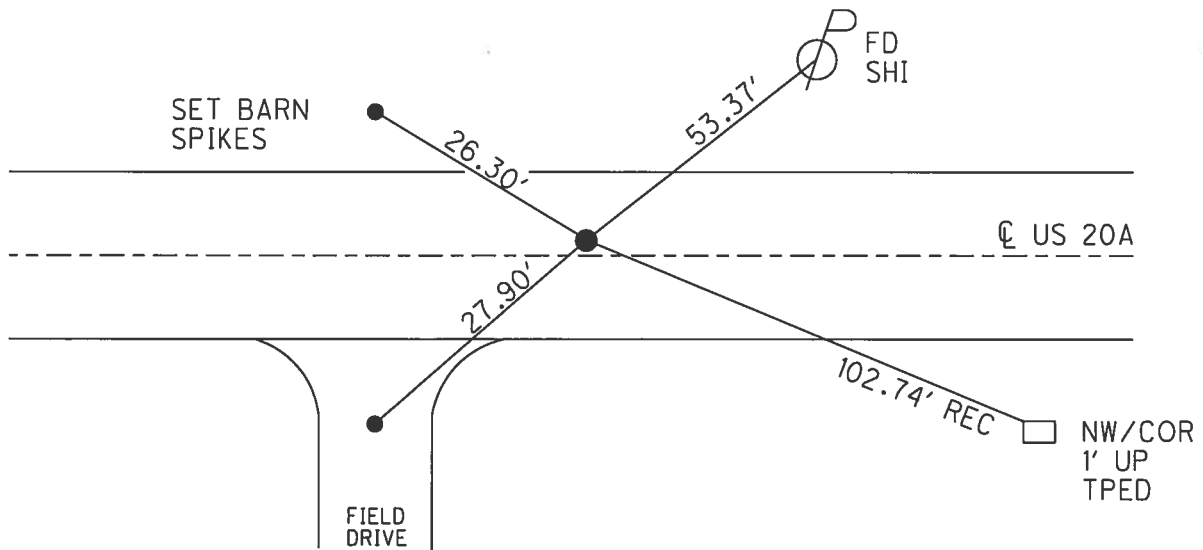
O.D.O.T. DISTRICT 2 SURVEY OFFICE (USE ONLY)

PERSONNEL \_\_\_\_\_ REFERENCE NO. 24 SHEET 29 OF 32  
 NOTES RHOADES DATE 4/19/17 ROUTE US 20 A  
 H.C. O'DONNELL WEATHER CLOUDY COUNTY WILLIAMS  
 R.C. RHOADES TEMP. 68° TOWNSHIP BRADY  
 \_\_\_\_\_ SECTION 3  
 \_\_\_\_\_ T 7 N R 4 E

TYPE MONUMENT R.R.SPIKE  
~~ON SURFACE~~ - BELOW 4"  
 LEFT - ☉ PAV'T - ~~RIGHT~~ 1'  
9.2' TO LT EDGE PAVEMENT  
 S.L.M. 703+48.11  
 Grid: Northing: 705057.405 Easting: 1451297.726



RECORD:  
 FD R.R.SPIKE  
 4" DOWN  
 8/5/87  
 STA. 814+61  
 FD R.R.SPIKE  
 6/18/02, MB  
 SET P.K./WASHER  
 9/24/02, MB  
 FD P.K.SHANK  
 SET MAG/WASHER  
 REF24  
 5/17/16, JFO  
 SET MAG/WASHER  
 11/20/17, JFO



# O.D.O.T. DISTRICT 2 SURVEY OFFICE

PERSONNEL

REFERENCE NO. 18

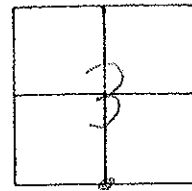
SHEET 25 OF 28

NOTES Barnhisel  
 H.C. Barnhisel  
 R.C. Seifring  
Malinsky

DATE 6-18-02  
 WEATHER Clear  
 TEMP. +70°

ROUTE US 20-A  
 COUNTY Williams  
 TOWNSHIP Brady  
 SECTION 3  
T 7 N R 4 E

TYPE MONUMENT RR Spk  
 ON SURFACE - BELOW 4"  
 LEFT - ~~C~~ PAV'T. - RIGHT 1.0 LT  
9.2' TO LT EDGE PAVEMENT  
 S.L.M. 814+61



Found RR spk  
 4" deep  
 8-5-87

Reset PK/washer  
 9-24-02  
 MB

