

O.D.O.T. DISTRICT 2 SURVEY OFFICE (USE ONLY)

PERSONNEL _____ REFERENCE NO. 25 SHEET 30 OF 32

NOTES RHOADES DATE 4/19/17 ROUTE US 20 A
 H.C. O'DONNELL WEATHER CLOUDY COUNTY WILLIAMS
 R.C. RHOADES TEMP. 68° TOWNSHIP BRADY
 _____ SECTION 3
 _____ T 7 N R 4 E

TYPE MONUMENT R.R.SPIKE

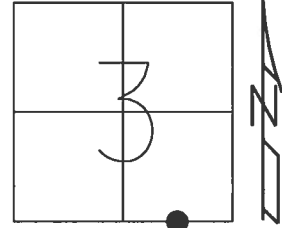
~~ON SURFACE~~ - BELOW 1"

LEFT - ☉ PAV'T - ~~RIGHT~~ 1.7'

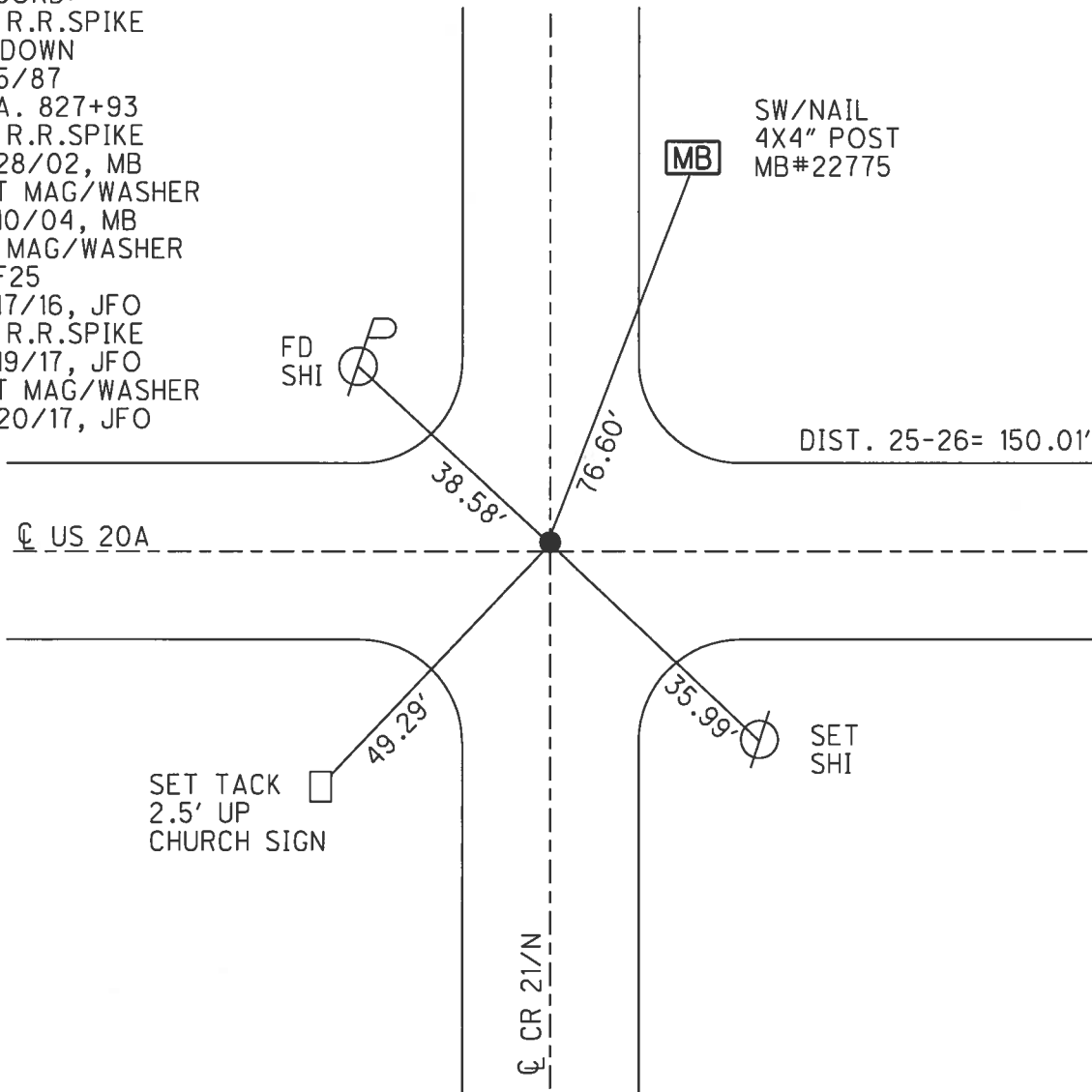
- TO - EDGE PAVEMENT

S.L.M. 716+81.13

Grid: Northing: 705026.555 Easting: 1452630.373



RECORD:
 FD R.R.SPIKE
 2" DOWN
 8/5/87
 STA. 827+93
 FD R.R.SPIKE
 5/28/02, MB
 SET MAG/WASHER
 5/10/04, MB
 FD MAG/WASHER
 REF25
 5/17/16, JFO
 FD R.R.SPIKE
 4/19/17, JFO
 SET MAG/WASHER
 11/20/17, JFO



O.D.O.T. DISTRICT 2 SURVEY OFFICE

PERSONNEL

REFERENCE NO. 18-A

SHEET 26 OF 28

NOTES Barnhisel

H.C. Canterbury

DATE 5-28-02

ROUTE U.S. 20-A

R.C. Beaumont

WEATHER Cloudy

COUNTY Williams

Malinsky

TEMP. +70°

TOWNSHIP Brady

SECTION 3

T 7 N R 4 E

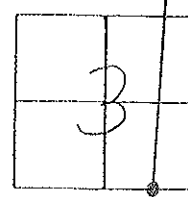
TYPE MONUMENT RR Spk

ON SURFACE - BELOW 2"

LEFT - ~~E~~ PAV'T - RIGHT 1" LT

- TO - EDGE PAVEMENT ON E PAVT NORTH

S.L.M. 827+93



Found RR Spk
2" Below
8-5-87

Reset mag & washer
05/10/04
MB

Fd SHI
SE/S

Cut "X" in
5" steel pole
1.4' up

E Pav't

U.S. 20-A

SET SHI
in church
sign

Fd SHI
NW/S

Co Rd. # 21-N

