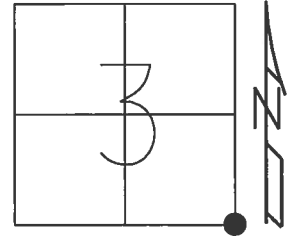


O.D.O.T. DISTRICT 2 SURVEY OFFICE (USE ONLY)

PERSONNEL _____ REFERENCE NO. 27 SHEET 32 OF 32
 NOTES RHOADES DATE 4/19/17 ROUTE US 20 A
 H.C. O'DONNELL WEATHER CLOUDY COUNTY WILLIAMS
 R.C. RHOADES TEMP. 68° TOWNSHIP BRADY
 _____ SECTION 3
 _____ T 7 N R 4 E

TYPE MONUMENT P.K./WASHER
~~ON SURFACE~~ - BELOW 1"
~~LEFT~~ - CL PAV'T - RIGHT 1.5'
- TO - EDGE PAVEMENT
 S.L.M. 730+05.30
 Grid: Northing: 704996.127 Easting: 1453954.198



RECORD:
 FD BENT IPIPE
 3" DOWN
 RESET WITH TIES
 BEACH, 9/73
 FD P.K./WASHER ATOP
 STA. 841+66
 0+00 FULTON CO.
 5/29/02, MB
 SET P.K./WASHER
 9/24/02, MB
 FD P.K./WASHER
 7/9/04, DCH
 SET MAG/WASHER
 8/24/04, MB
 FD MAG/WASHER
 REF27
 5/17/16, JFO
 FD P.K./WASHER
 1" DOWN
 4/19/17, JFO
 SET MAG/WASHER
 11/20/17, JFO

NOTE: REF 1 FULTON CO.

