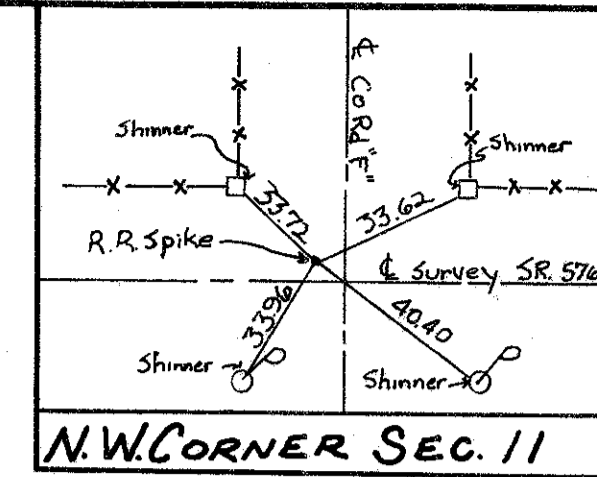
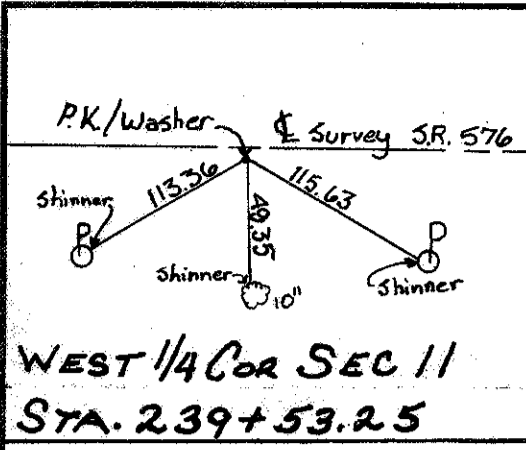
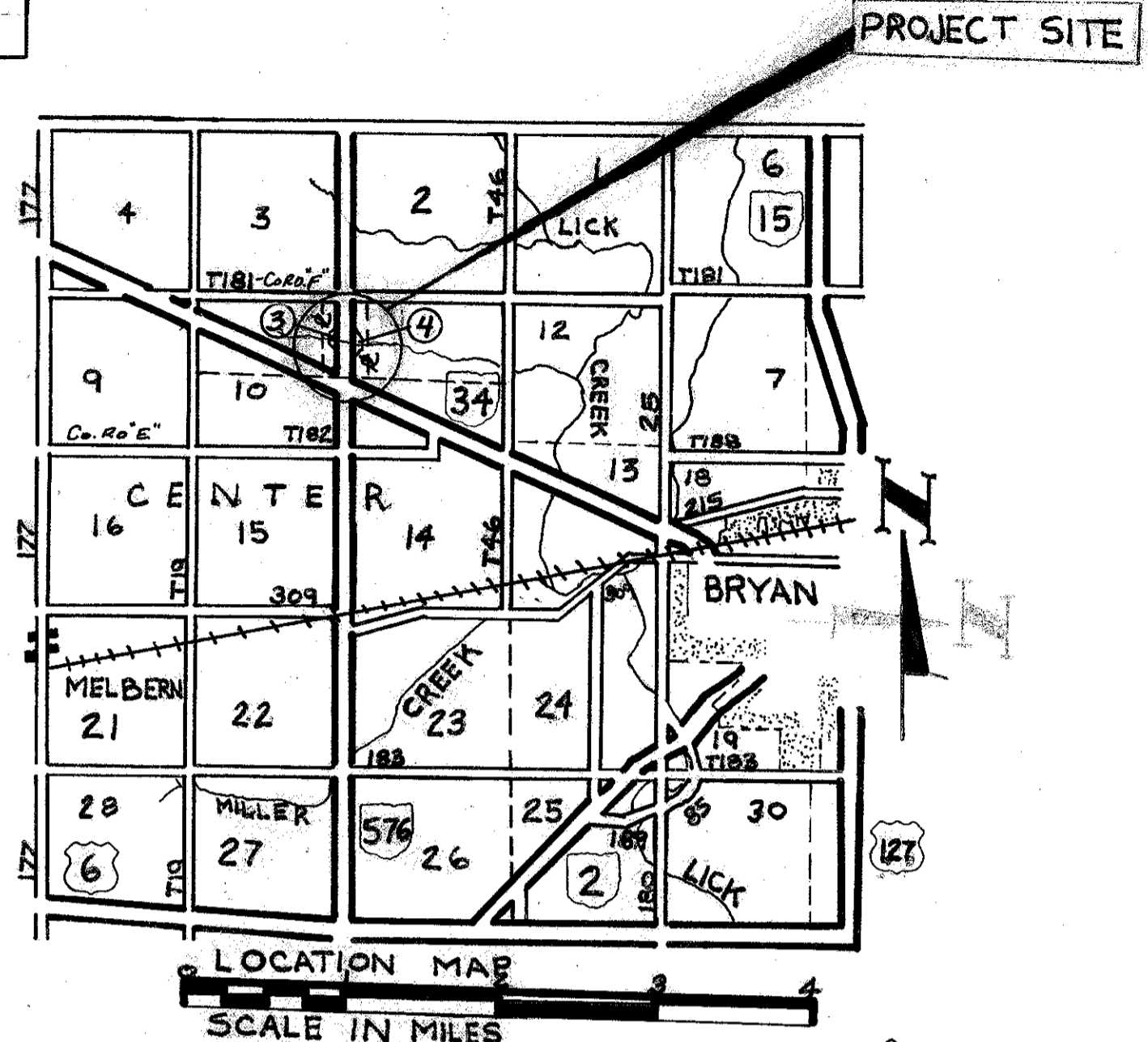


E 1/2, N.E. 1/4, SEC 10, T 6 N, R 2 E, CENTER TWP.



FHWA REGION	STATE	PROJECT
5	OHIO	

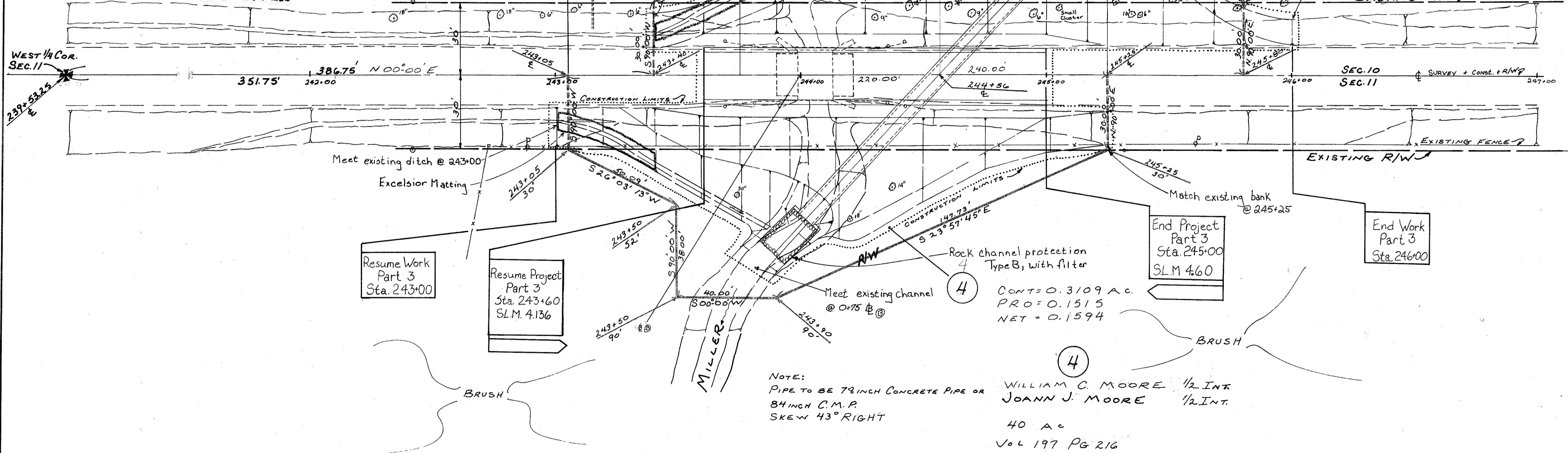
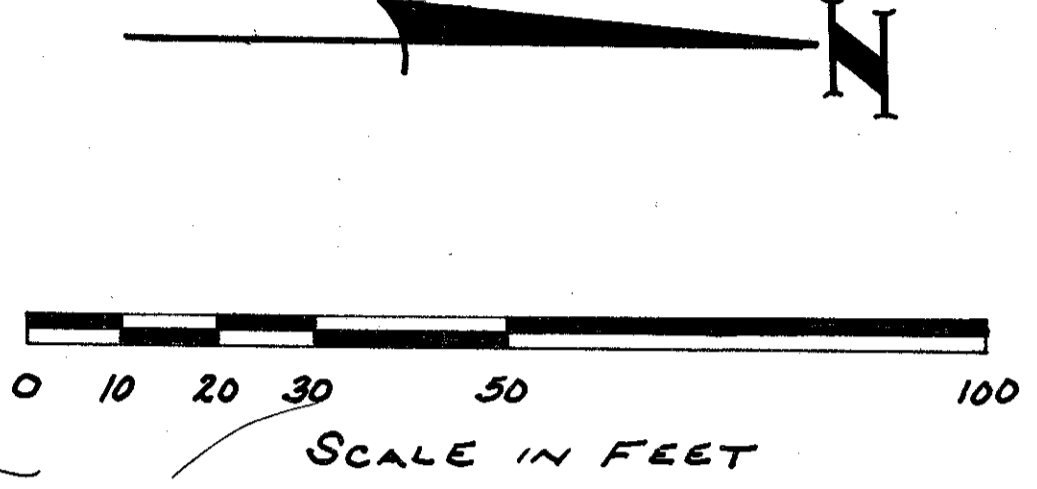
WILLIAMS 576-4.62
JOB No. 029440
PART 3



BEGIN PROPERTY ACQUISITION STA. 243+05

END PROPERTY ACQUISITION STA. 245+80

WEST 1/4 COR. SEC. 11
239+53.25



Resume Work Part 3 Sta. 243+00

Resume Project Part 3 Sta. 243+60 S.L.M. 4.136

End Project Part 3 Sta. 245+00 S.L.M. 4.60

End Work Part 3 Sta. 246+00

CONT = 0.3109 AC.
PRO = 0.1515
NET = 0.1594

NOTE:
PIPE TO BE 78 INCH CONCRETE PIPE OR 84 INCH C.M.P.
SKEW 43° RIGHT

WILLIAM C. MOORE 1/2 INT.
JOANN J. MOORE 1/2 INT.
40 AC
VOL 197 PG 216

PARCEL NO.	OWNER	DEED RECORD		DEED AREA ACRES	TOTAL PRO TAKE ACRES	TOTAL TAKE ACRES	P.R.O. IN TAKE ACRES	NET TAKE ACRES	RESIDUE ACRES	REMARKS	AS ACQUIRED	
		VOL.	PAGE								VOL.	PAGE
3	WILLIAM C. & JOANN J. MOORE	197	216	40	1.818	0.3680	0.1652	0.2028	39.6320		272	383
3-WA	"	197	217	40				0.0120		GRADE DITCH		
4	"	197	217	40	1.818	0.3109	0.1515	0.1594	39.6891		272	384

N.W. 1/4 SEC 11, T 6 N, R 2 E, CENTER TWP.

PARCEL NO.	DATE	REMARKS
5-6	6-21-85	Change Par 5 to 3
5-6	6-21-85	NAME CHANGE
5 & 6	6-17-85	Change 2 to 3

R 2576 #3 H-70