

FED. RD. DIVISION	STATE	PROJECT
2	OHIO	

WIL-576-10.58 ±

TYPICAL SECTIONS

TYPE T-35 on B-19

TYPICAL SECTION "A"

CODE 6201

Note: For Details Not Shown See Std. Dwg. R'

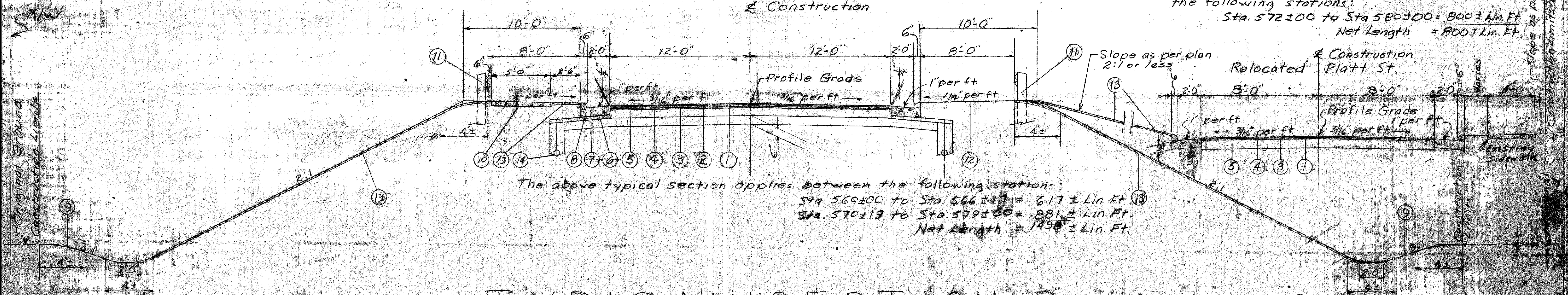
TYPICAL SECTION "C"

CODE 6201

This typical section applies between the following stations:

Sta. 572±00 to Sta. 580±00 = 800 ± Lin. Ft.
Net Length = 800 ± Lin. Ft.

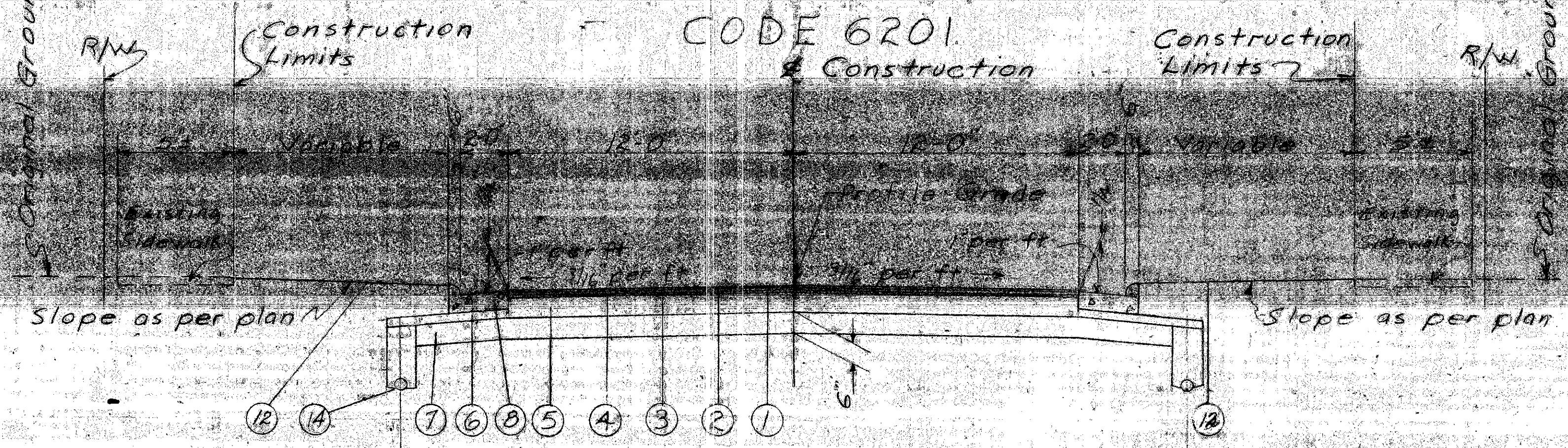
Existing Pavement Data
 Sta. 553±86 to Sta. 559±87
 18' wide with 5" Kentucky Rock Surface on 6" Gravel Base.
 Sta. 559±87 to Sta. 574±67
 19' wide including a 15" Concrete Curb and Gutter on each side with a 2" Bituminous Surface on 5" Kentucky Rock Base.
 Sta. 574±67 to Sta. 594±02
 19' wide with 2 1/2" Bituminous Surface on 4 1/2" Oil Treated Gavel Base.



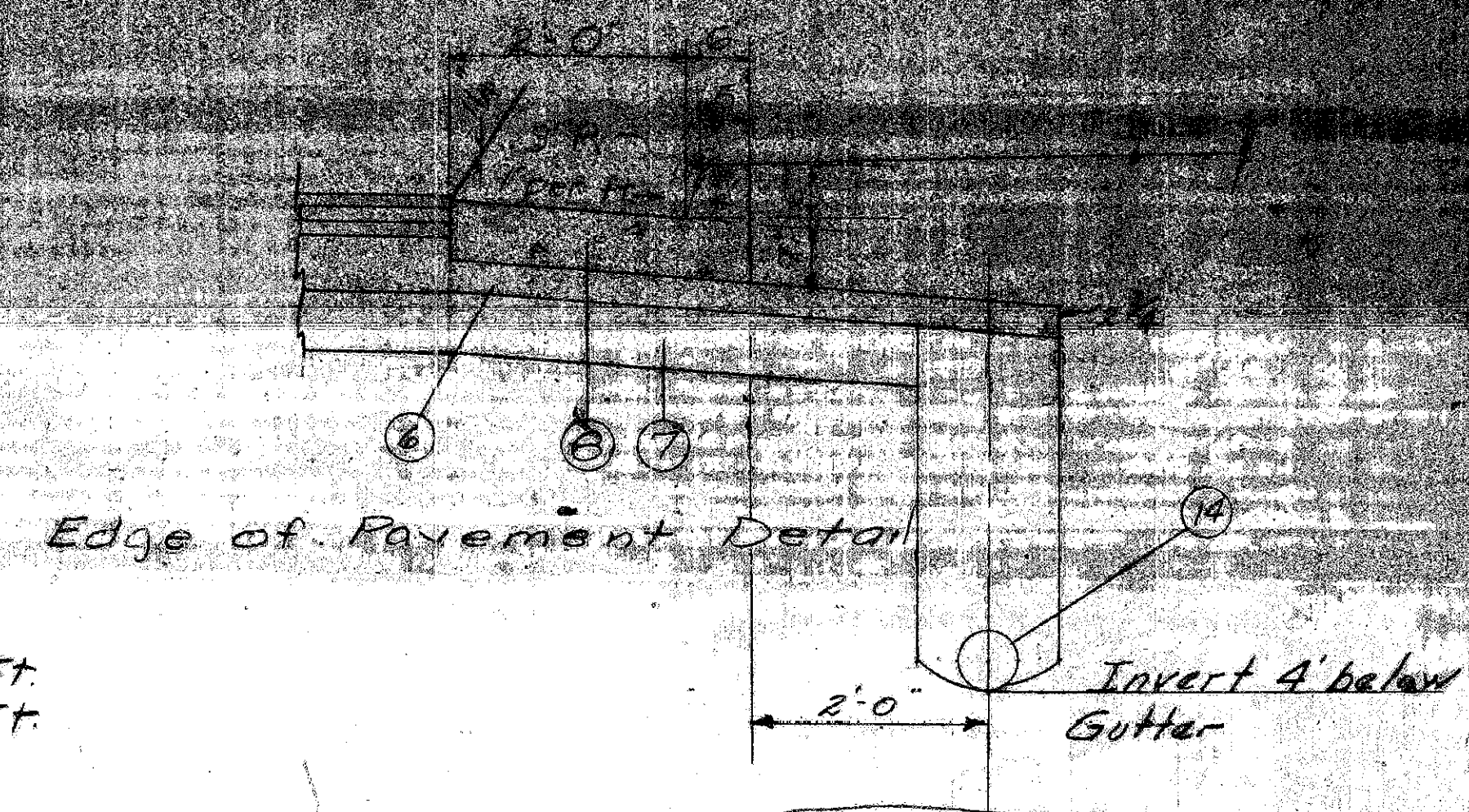
The above typical section applies between the following stations:
 Sta. 560±00 to Sta. 566±17 = 617 ± Lin. Ft.
 Sta. 570±19 to Sta. 579±00 = 881 ± Lin. Ft.
 Net Length = 1498 ± Lin. Ft.

TYPICAL SECTION "B"

CODE 6201



The above typical section applies between the following stations:
 Sta. 580±50 to Sta. 593±65 = 1315 ± Lin. Ft.
 Net Length = 1315 ± Lin. Ft.



- ① T-35, 1" Asphaltic Concrete Surface Course, Type "C" (85-100).
- ② B-35, 1 1/2" Asphaltic Concrete Second Leveling Course (85-100)
- ③ B-35, 1 1/2" Asphaltic Concrete First Leveling Course (85-100)
- ④ T-30, Bituminous Prime Coat, Sec. M-5.7, RT-2 or 3, applied at the rate of 0.40 Gal. per Sq. Yd.
- ⑤ B-19, 6" Aggregate Base Course
- ⑥ B-19, 2 3/4" Aggregate Base Course

- ⑦ I-22, 6" Subbase
- ⑧ I-12, Standard Combination Curb and Gutter, Type 2 (7" thick)
- ⑨ I-12, Standard Combination Curb and Gutter, Type 2 (9" thick)
- ⑩ I-13, 4" Concrete Sidewalk
- ⑪ I-15, Guard Rail
- ⑫ L-9, Seeding and Protecting
- ⑬ L-9, Sodding
- ⑭ I-1, 6" Pipe Class I-3

Design Speed = 35 MPH
 Traffic ADT 1960
 P & A = 3100 ?
 B & C = 200

Scanned
July 19 1997

FED. RD. DIVISION	STATE	PROJECT	1
2	OHIO		9

WIL-576-10.53

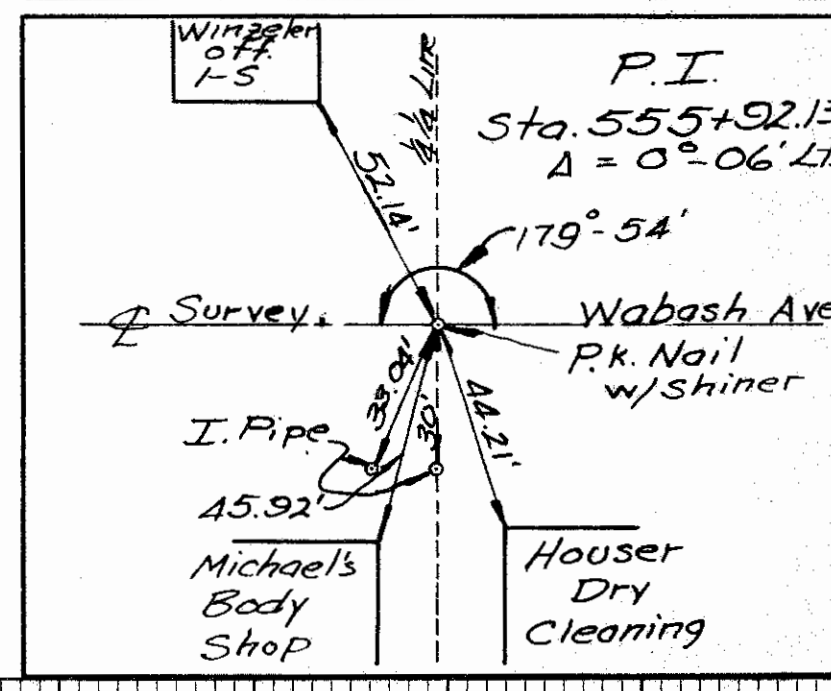
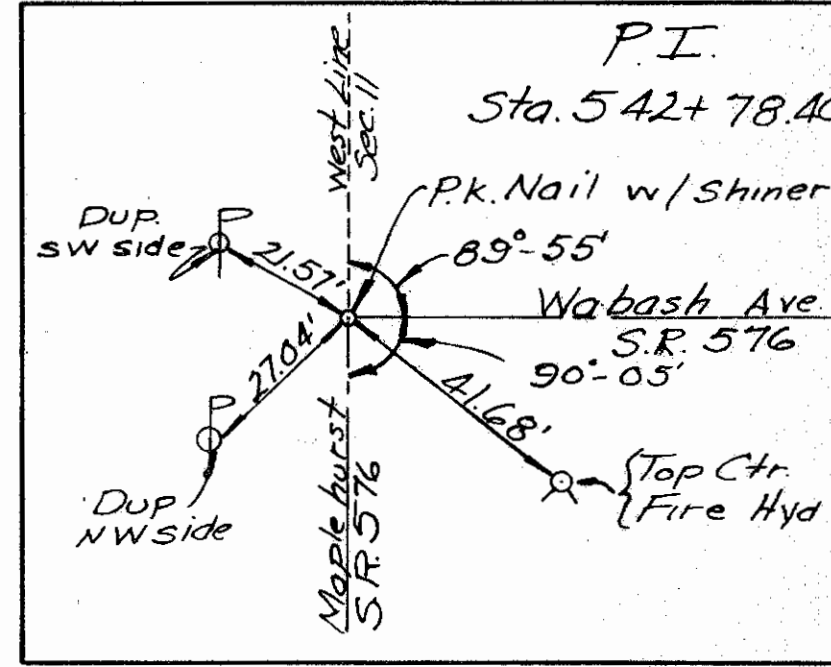
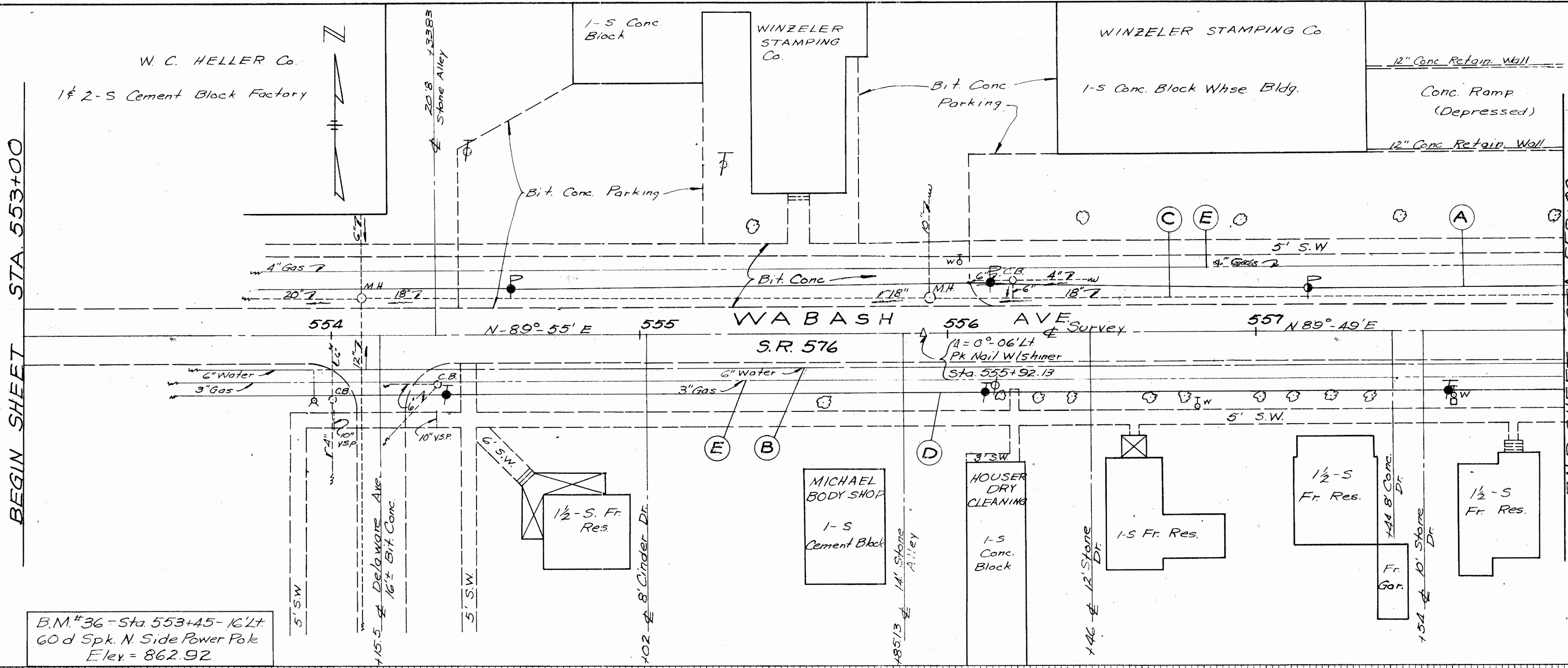
EXISTING UTILITIES PLAN

WIL-576-10.58

RECONSTRUCTION OF EXISTING SEPARATED CROSSING WITH WABASH RAILROAD
VILLAGE OF MONTEPELIER
WILLIAMS COUNTY

BEGIN SHEET STA. 553+00

END SHEET STA. 558+00



B.M. #36 - Sta. 553+45 - 16' LT
60 d Spk. N. Side Power Pole
Elev. = 862.92

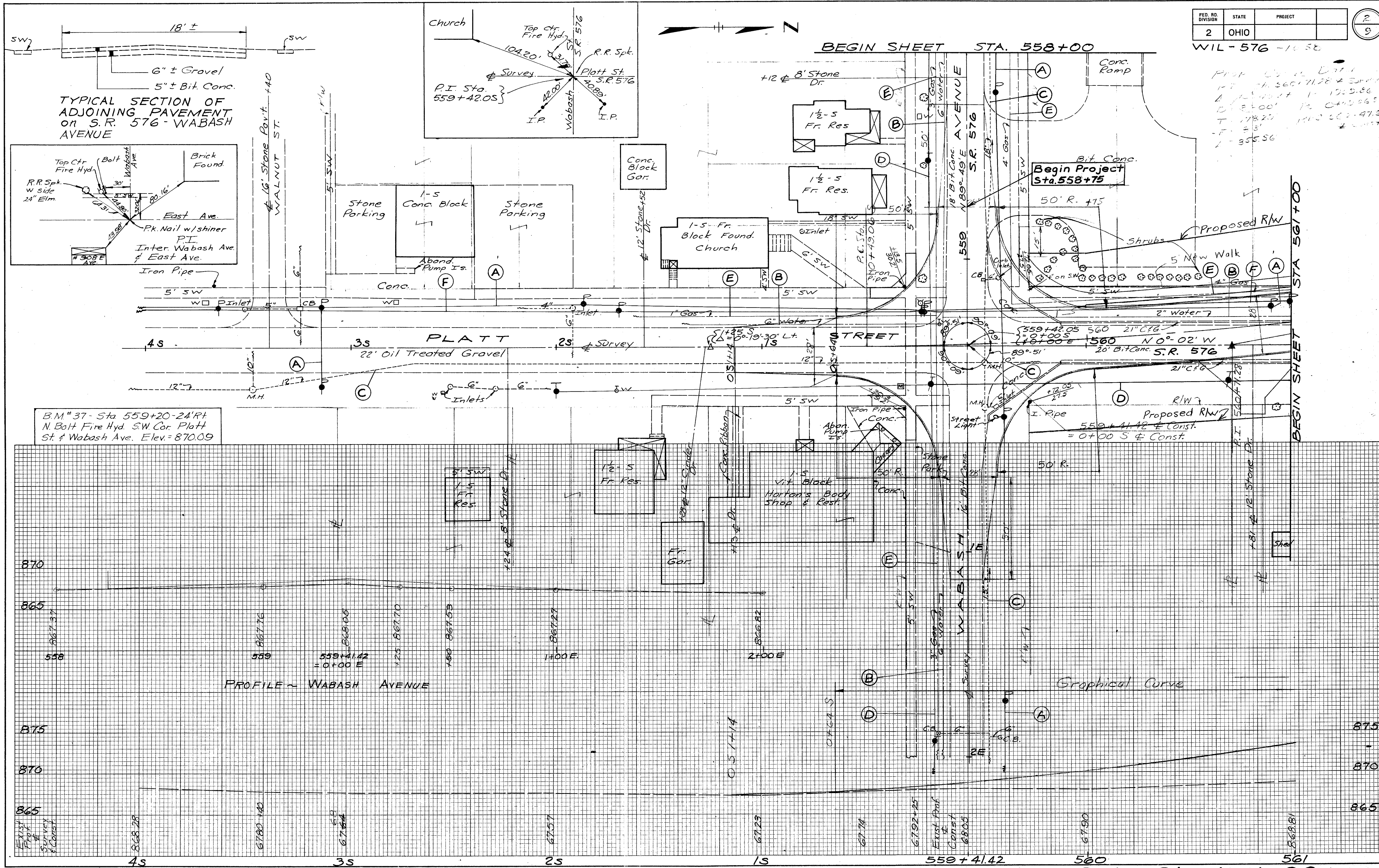
MARKER	OWNER	UTILITY	REMARKS
A	Village of Montpelier	Power Service Line	
B	Village of Montpelier	Water Line	
C	Village of Montpelier	Sanitary and Storm Sewer	
D	General Telephone Co of Ohio Celina, Ohio	Telephone Cable	
E	Ohio Fuel Gas Co, Bryan Ohio	Gas Line	
F	Toledo Edison Co, Toledo, Ohio	Transmission Line	
G	Wabash Railroad	Telegraph and Telephone Line	

Sta. 553+00 to Sta. 558+00

FED. RD. DIVISION	STATE	PROJECT	2 9
2	OHIO		

WIL-576-1458

Prop. Cont. Dist. 2
 1-7-58 11.560 71.28 + 5000
 1-10-58 11.175 86
 1-13-58 11.175 86
 1-17-58 11.175 86
 1-20-58 11.175 86
 1-23-58 11.175 86
 1-26-58 11.175 86
 1-29-58 11.175 86
 1-31-58 11.175 86

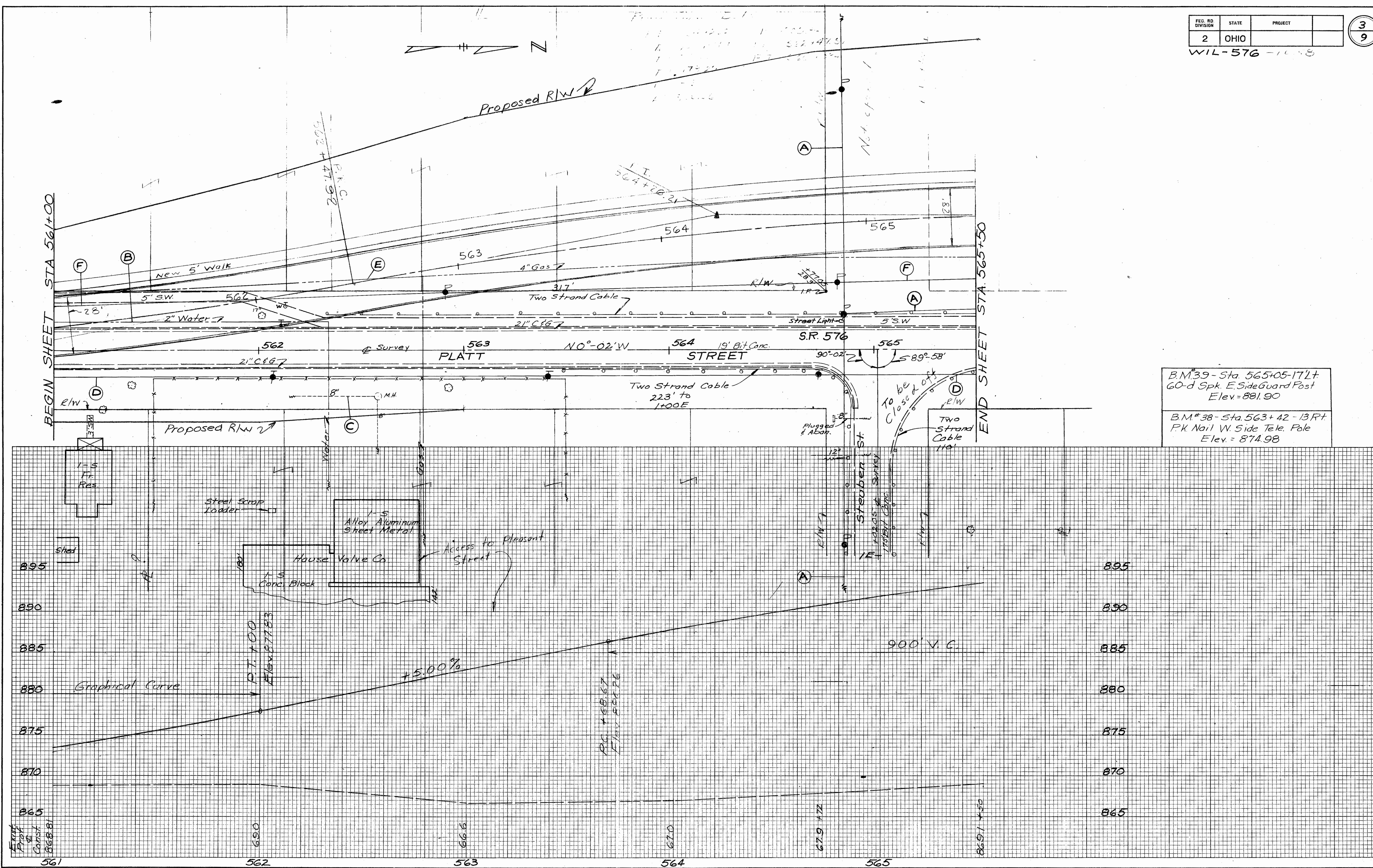


Scanned July 1987

FED. RD DIVISION	STATE	PROJECT
2	OHIO	

WIL-576-1008

Secured July 1997



B.M.#39 - Sta. 565+05-17L+
60-d Spk. E. Side Guard Post
Elev. = 881.90

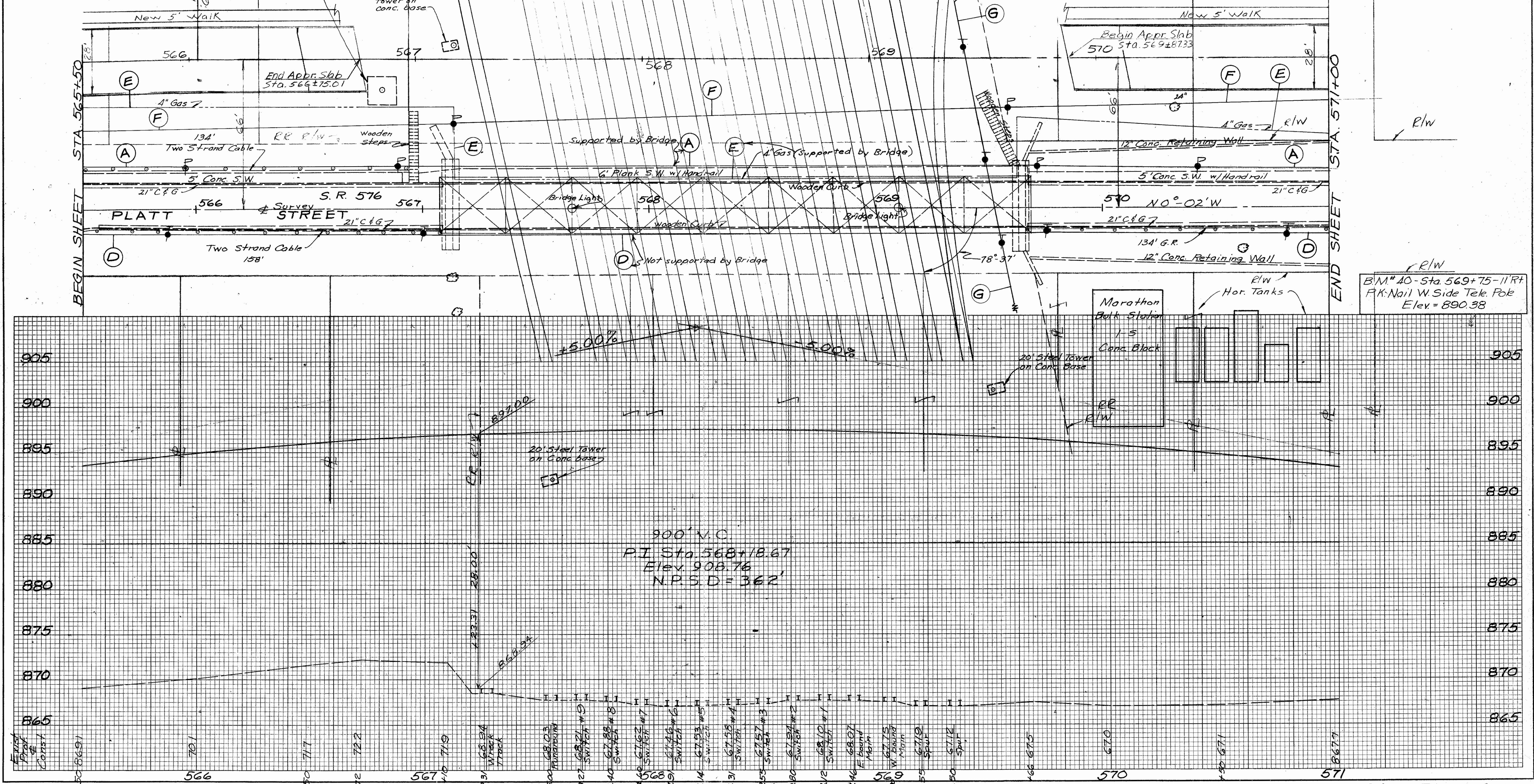
B.M.#38 - Sta. 563+42-13R+
P.K. Nail W. Side Tele. Pole
Elev. = 874.98

Sta. 561+00 to Sta. 565+50

EXIST. BRIDGE DATA
 WIL-576-10.74
 Thru. High Truss
 Conc. Wings & Abut.
 Span: 250'
 Skew: None
 Clearance From Rails = 20'±
 Plank Deck & Walk
 Condition: Poor
 Plank Curbing
 Roadway: 195'

FED. RD. DIVISION	STATE	PROJECT
2	OHIO	WIL-576-10.55

4
9



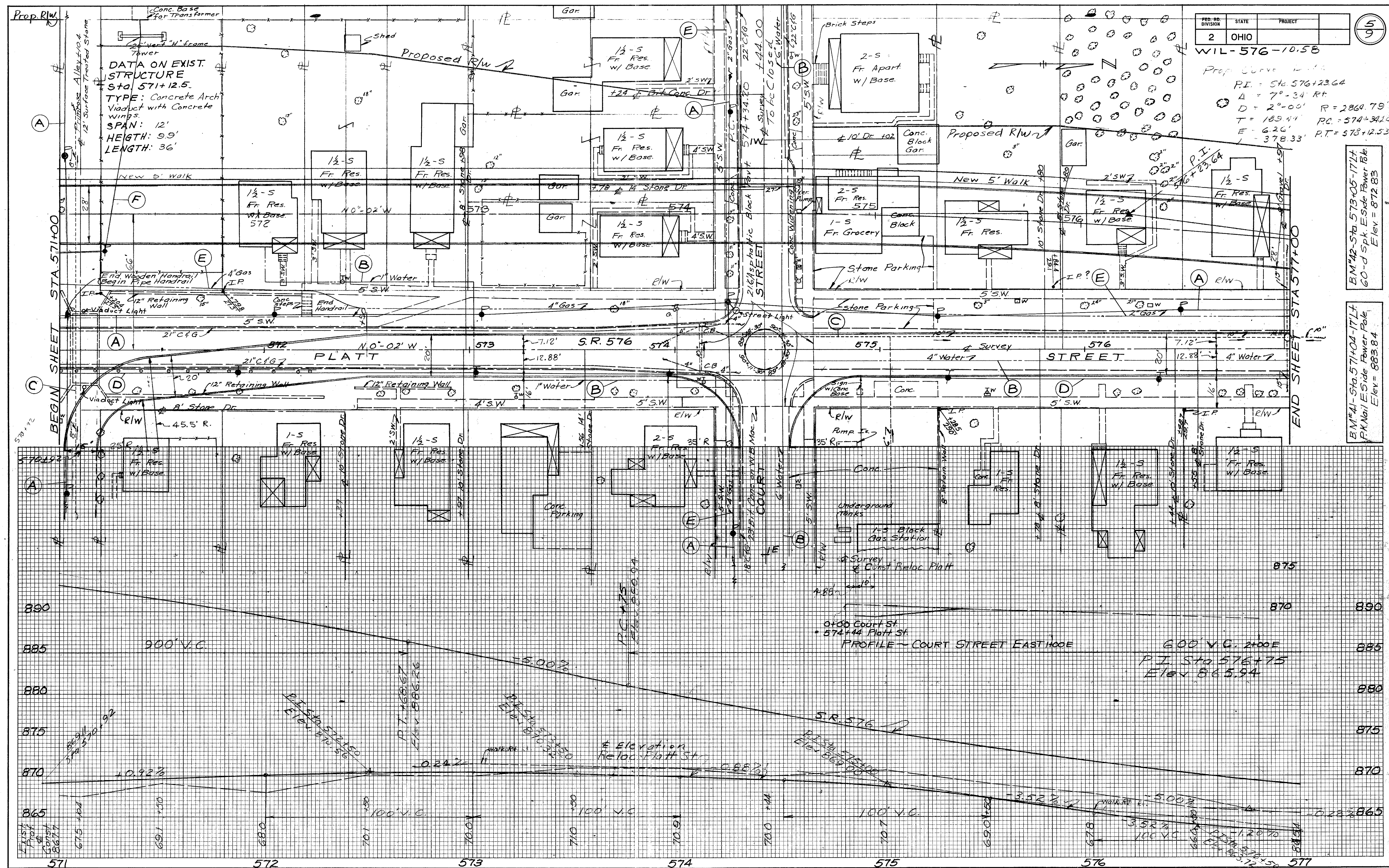
BEGIN SHEET STA. 565+50

END SHEET STA. 571+00

Sta. 565+50 to Sta. 571+00

Rockwood
July 1997

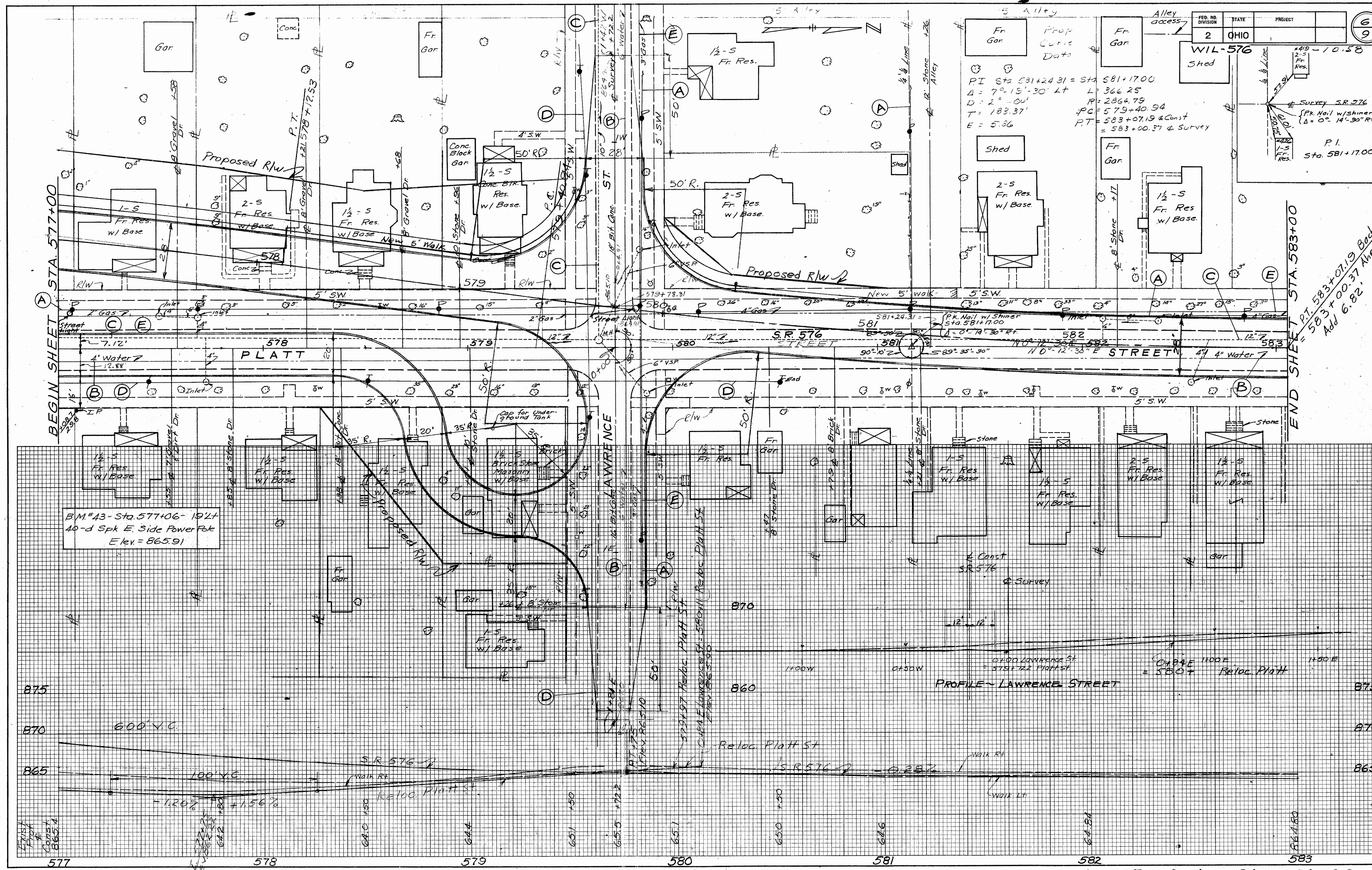
PER. NO. DIVISION	STATE	PROJECT
2	OHIO	WIL-576-10.5B



Sta. 571+00 to Sta. 577+00

11 of 11 NOR

Scanned July 1997



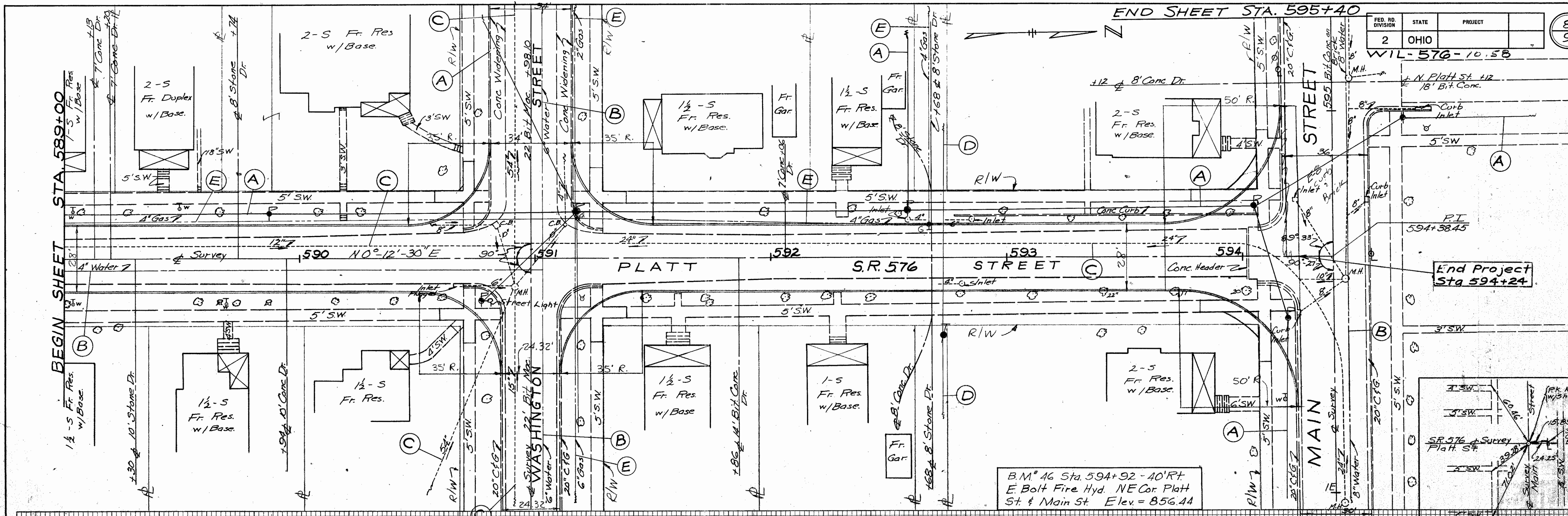
Sta. 577+00 to Sta. 583+00

Surveyed July 1997

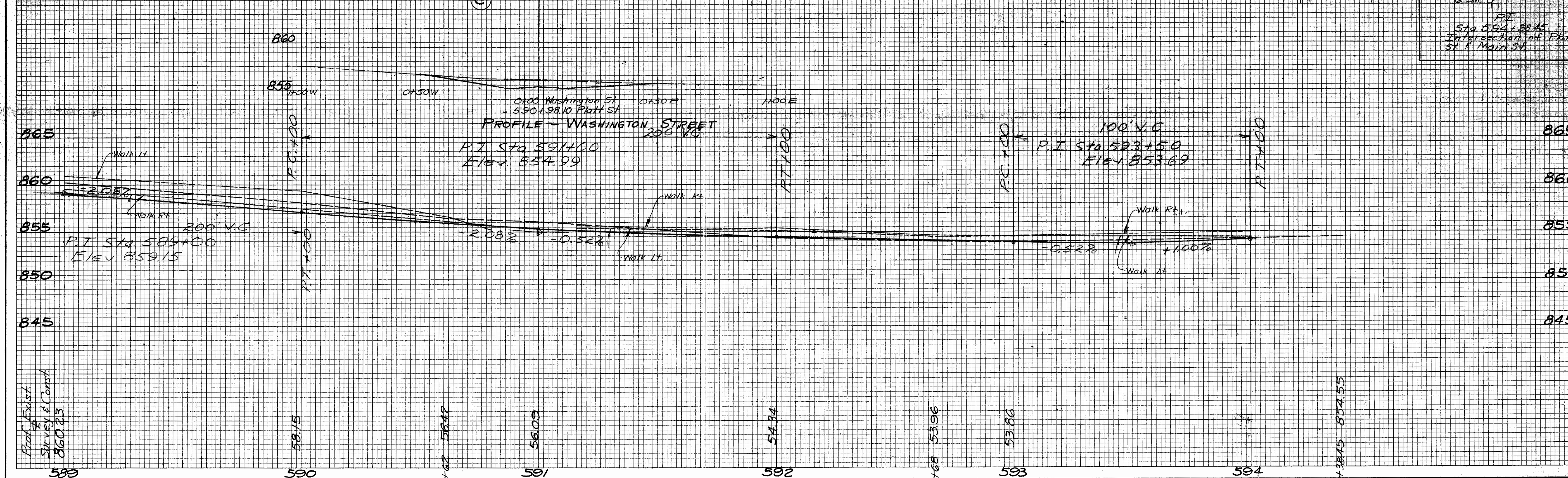
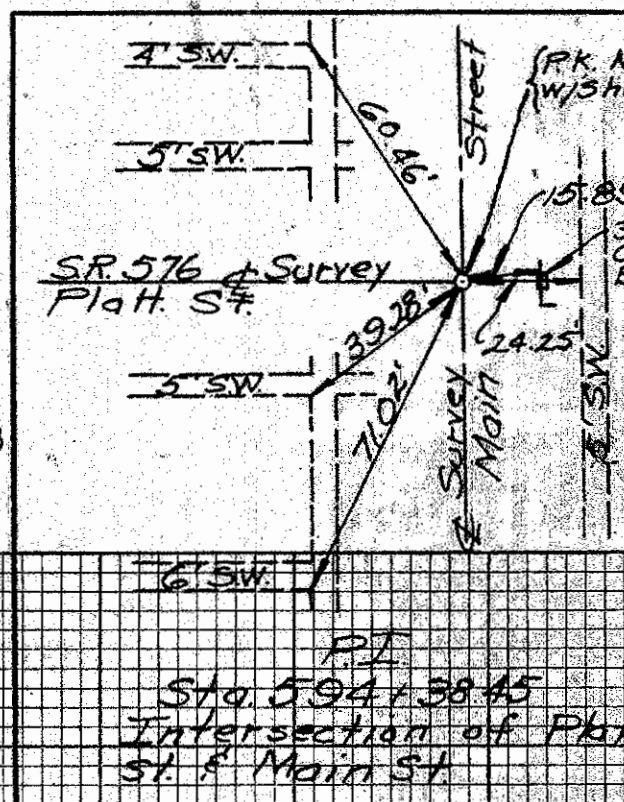
END SHEET STA. 595+40

FED. RD. DIVISION	STATE	PROJECT
2	OHIO	WIL-576-10.58

8
9



B.M. # 46 Sta. 594+92 - 40' RT
E Bolt Fire Hyd. NE Cor. Platt
St & Main St Elev. = 856.44



Sta. 589+00 To Sta. 595+40