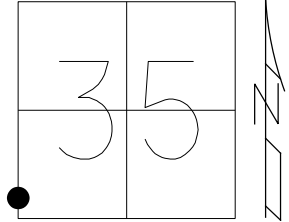


O.D.O.T. DISTRICT 2 SURVEY OFFICE (USE ONLY)

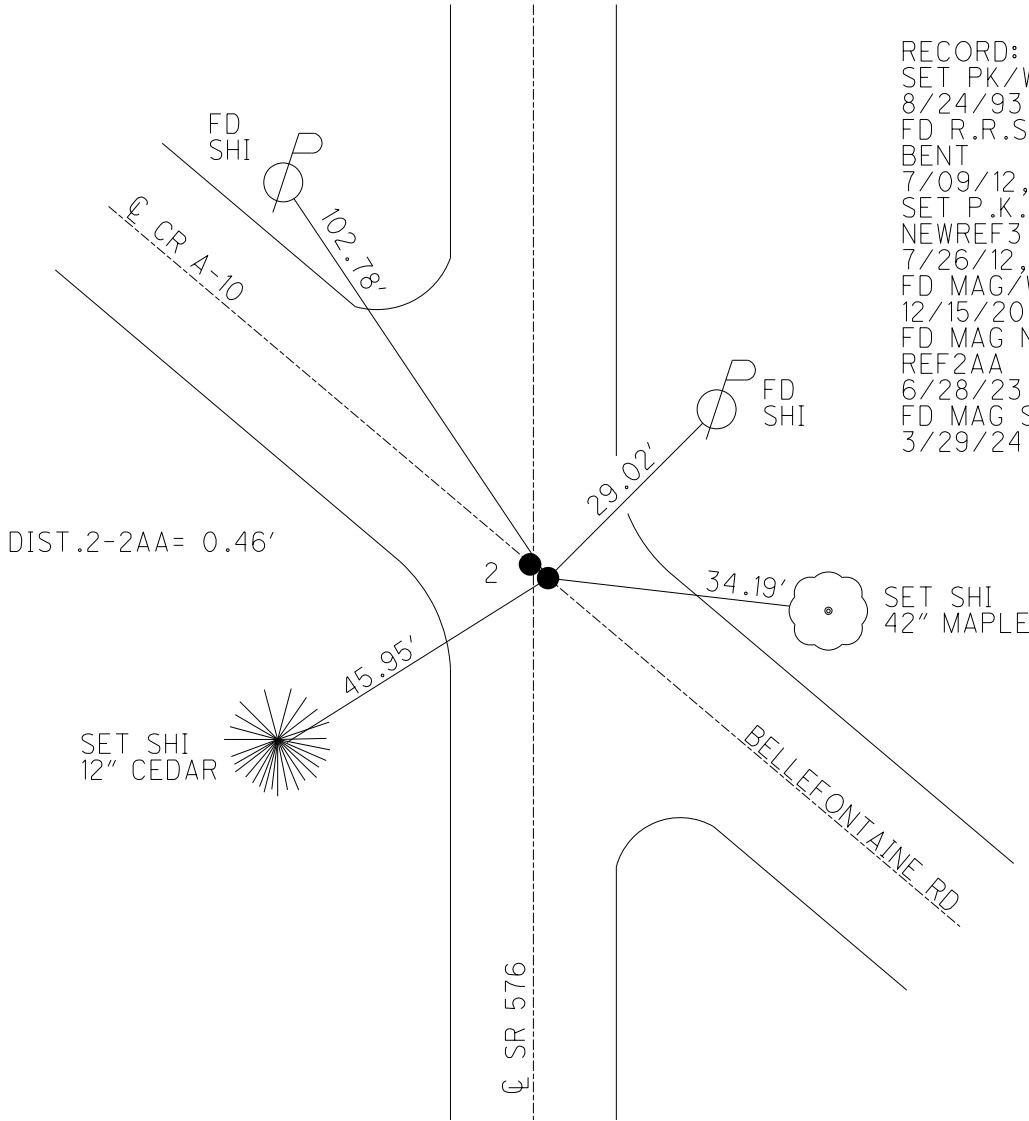
PERSONNEL _____ REFERENCE NO. 2 AA SHEET 4 OF 15
 NOTES ASTON DATE 3/29/24 ROUTE SR 576
 H.C. RHOADES WEATHER CLEAR COUNTY WILLIAMS
 R.C. ASTON TEMP. 44° TOWNSHIP CENTER
 DWG BY RHOADES PID CHIP SEAL SECTION 35
 T 6 N R 2 E

TYPE MONUMENT MAG SHANK
 ON SURFACE - ~~BELOW~~ ON
 OFFSET \perp PAVEMENT 2.8' ~~FF~~ : RT
7.3' TO RT EDGE PAVEMENT
 STATION: 12+36



HORIZ.DATUM: NAD83 2011 GEOID: NAVD88 2018
 GRID: NORTHING: 649515.539 EASTING: 1389346.809

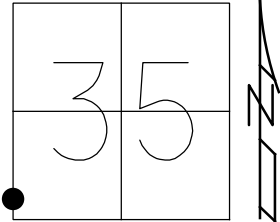
RECORD:
 SET PK/WASHER
 8/24/93, MB
 FD R.R.SPIKE
 BENT
 7/09/12, DCH
 SET P.K./WASHER
 NEWREF3
 7/26/12, DCH
 FD MAG/WASHER
 12/15/20, JMR
 FD MAG NAIL
 REF2AA
 6/28/23, JMR
 FD MAG SHANK
 3/29/24, JMR



O.D.O.T. DISTRICT 2 SURVEY OFFICE (USE ONLY)

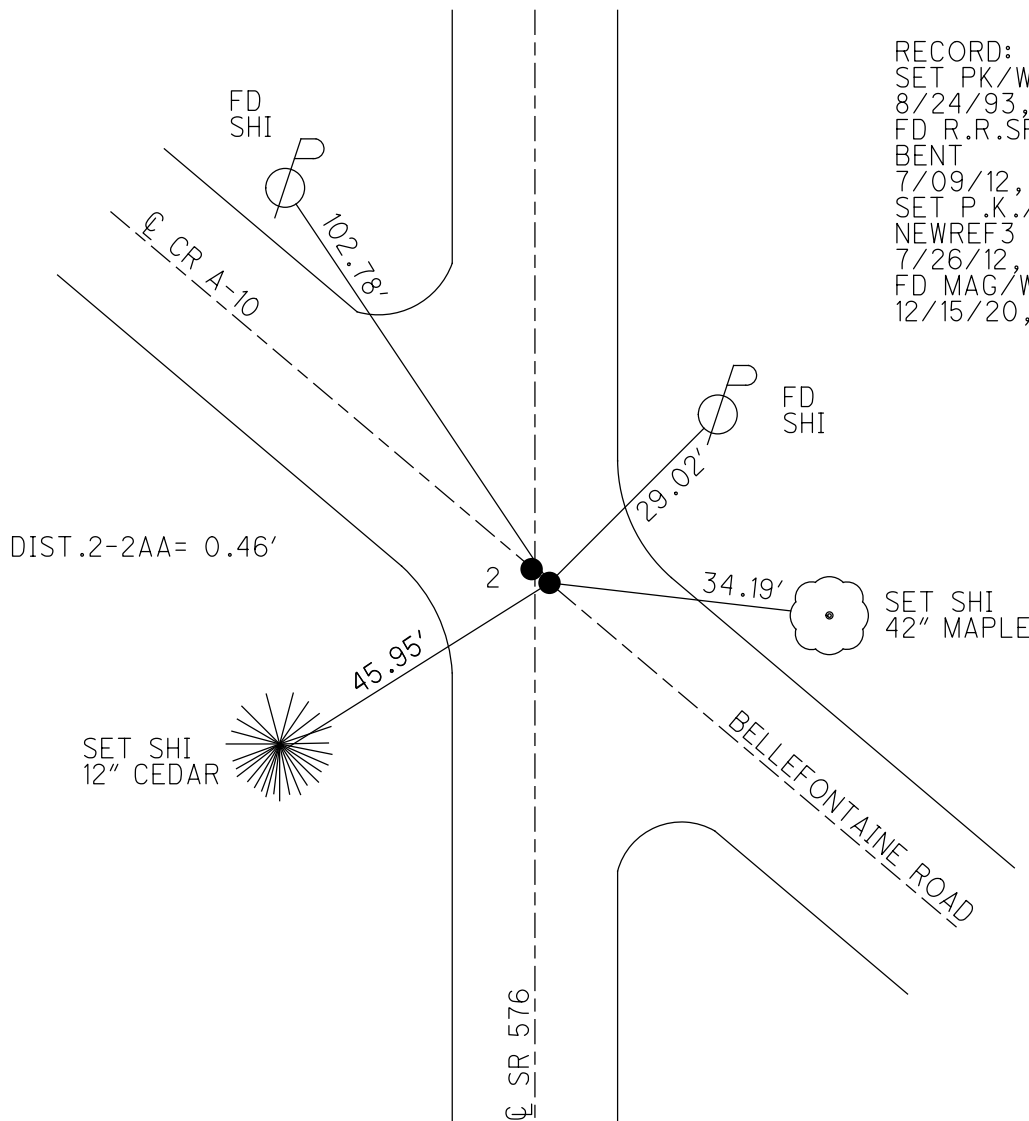
PERSONNEL _____ REFERENCE NO. 2 AA SHEET 3 OF 14
 NOTES RHOADES DATE 12/15/20 ROUTE SR 576
 H.C. _____ WEATHER FAIR COUNTY WILLIAMS
 R.C. _____ TEMP. 25° TOWNSHIP CENTER
 DWG BY NIESE PID NO PID SECTION 35
 T 6 N R 2 E

TYPE MONUMENT MAG/WASHER
 ON SURFACE - ~~BELOW~~ ON
 OFFSET Q PAVEMENT 2.8' ~~ET~~ : RT
7.3' TO RT EDGE PAVEMENT
 STATION: 12+36



HORZ.DATUM: NAD83 2011 GEOID: NAVD88 2018
 GRID: NORTHING: 649515.539 EASTING: 1389346.809

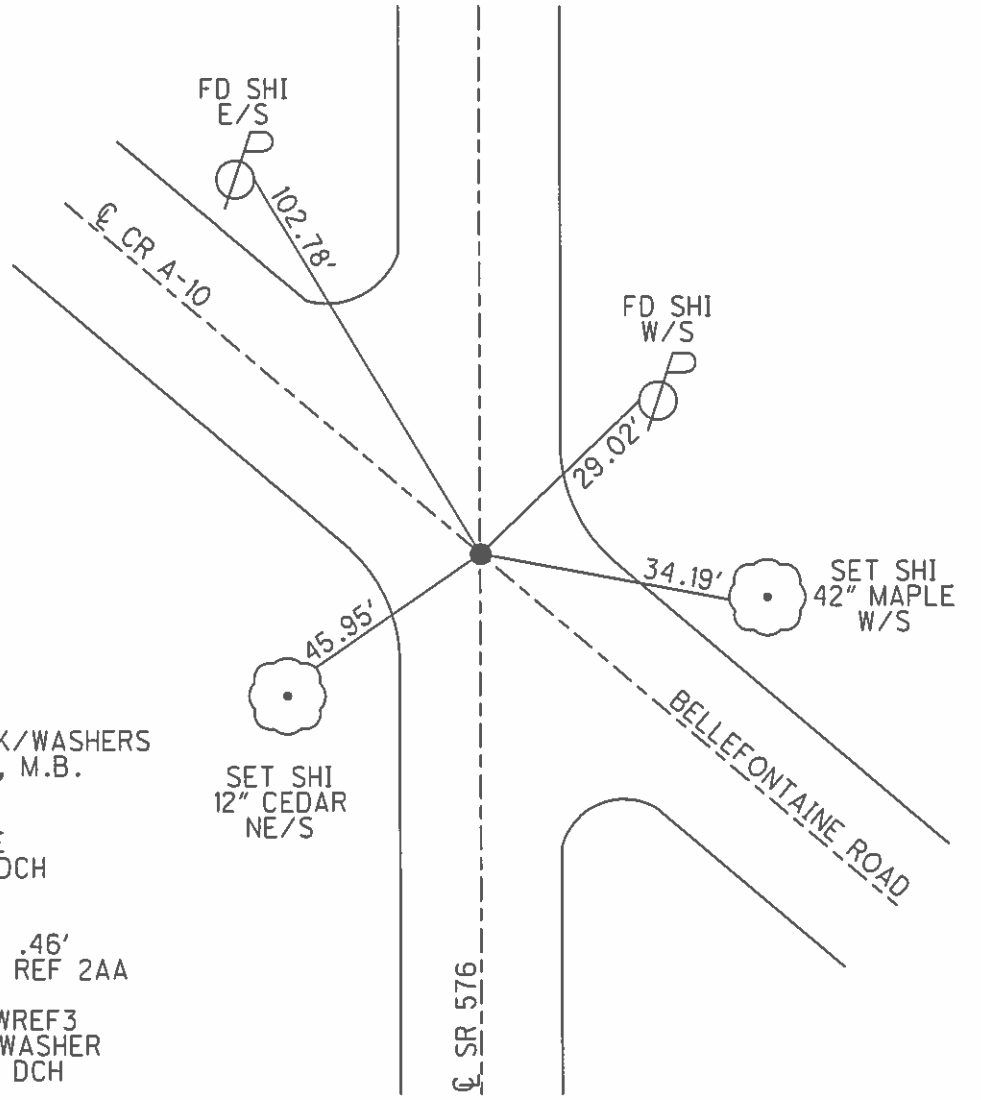
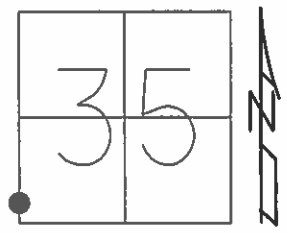
RECORD:
 SET PK/WASHER
 8/24/93, MB
 FD R.R.SPIKE
 BENT
 7/09/12, DCH
 SET P.K./WASHER
 NEWREF3
 7/26/12, DCH
 FD MAG/WASHER
 12/15/20, JMR



O.D.O.T. DISTRICT 2 SURVEY OFFICE (USE ONLY)

PERSONNEL _____ REFERENCE NO. 2 AA SHEET 3 OF 14
 NOTES HOMAN DATE 7-09-12 ROUTE SR 576
 H.C. ROUSOS WEATHER CLEAR COUNTY WILLIAMS
 R.C. HOMAN TEMP. 75° TOWNSHIP CENTER
 SECTION 35
 T 6 N R 2 E

TYPE MONUMENT RR SPIKE
 ON SURFACE - ~~BELOW~~ ON
~~LEFT~~ - Q PAV'T - RIGHT 2.8'
7.3 TO RT EDGE PAVEMENT
 S.L.M. 12+36
 Grid: Northing: 649515.539 Easting: 1389346.809



RESET PK/WASHERS
 8-24-93, M.B.
 FD BENT
 RR SPIKE
 7-9-12, DCH
 NOTE:
 REF 2 IS .46'
 EAST OF REF 2AA
 GPS, NEWREF3
 SET PK/WASHER
 7-26-12, DCH

O.D.O.T. DISTRICT 2 SURVEY OFFICE

PERSONNEL

REFERENCE NO. 2

SHEET 2 OF 16

NOTES VAN DUSEN

H.C. COPDES

R.C. BARNHISEL

OTTO

DATE 6-11-93

WEATHER CLEAR

TEMP. +65°

ROUTE S.R. 576

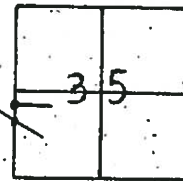
COUNTY Williams

TOWNSHIP Center

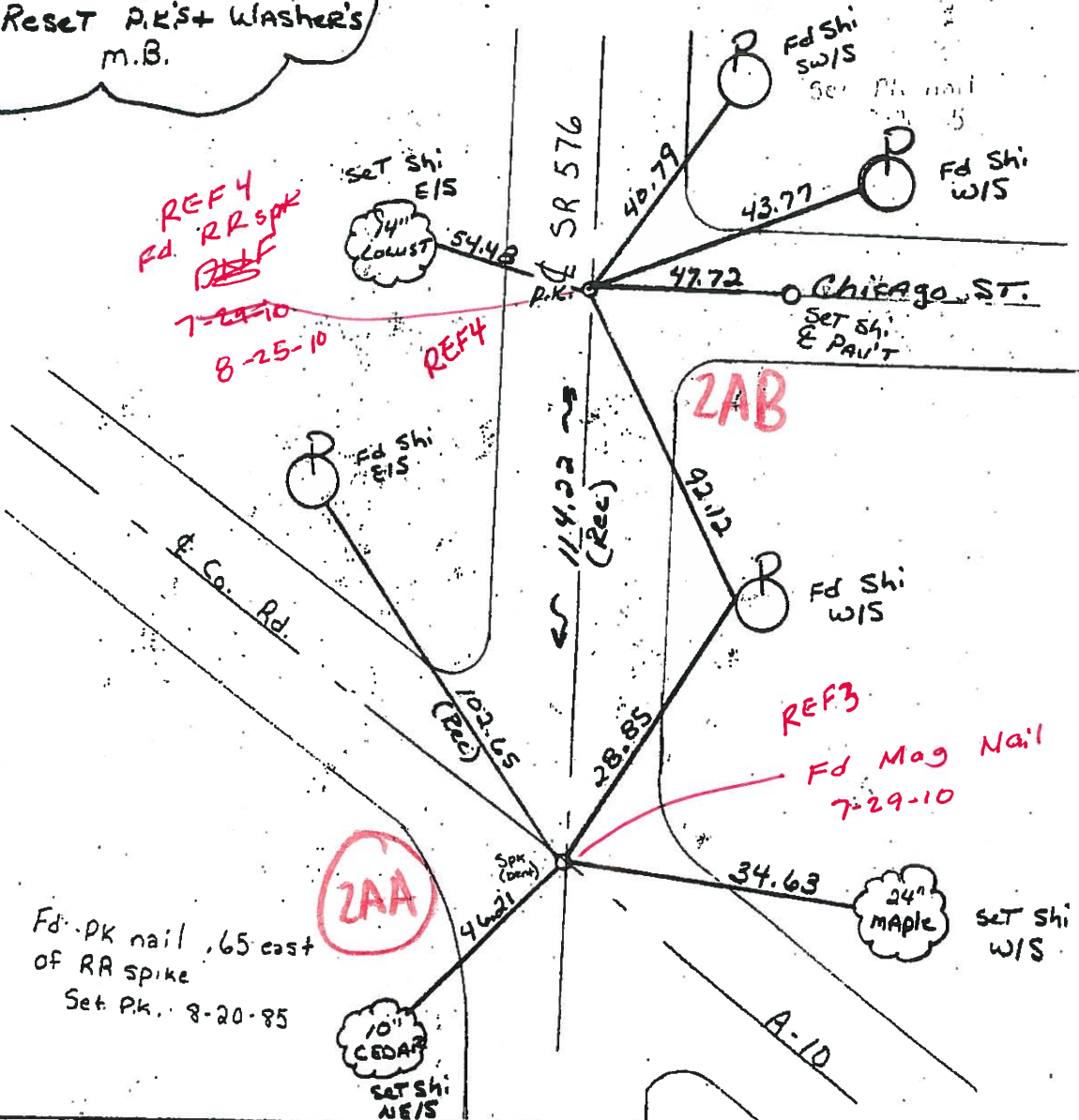
SECTION 35

T. R.

| | PT "A" | PT "B" |
|-----------------------------------|--------|--------|
| TYPE MONUMENT | RR Spk | P.K. |
| ON SURFACE - BELOW | yes | yes |
| SET - & PAV'T. - RIGHT | 2.8 | 3.4 |
| - TO RT EDGE PAVEMENT | 7.3 | 6.3 |
| S.L.M. | 12+36 | 13+50 |



8-24-93
Reset P.K.'s + Washer's
m.B.



ResurFaced 1993

O.D.O.T. DISTRICT 2 SURVEY OFFICE

PERSONNEL

REFERENCE NO. 2

SHEET 2 OF

NOTES 1. Stone

H.C. D. Curtis

R.C. R. Michalek

J. Huscholder

DATE 6 Sept. 85

WEATHER Rain

TEMP. 75°

ROUTE #576

COUNTY Williams

TOWNSHIP Center

SECTION 35

T R

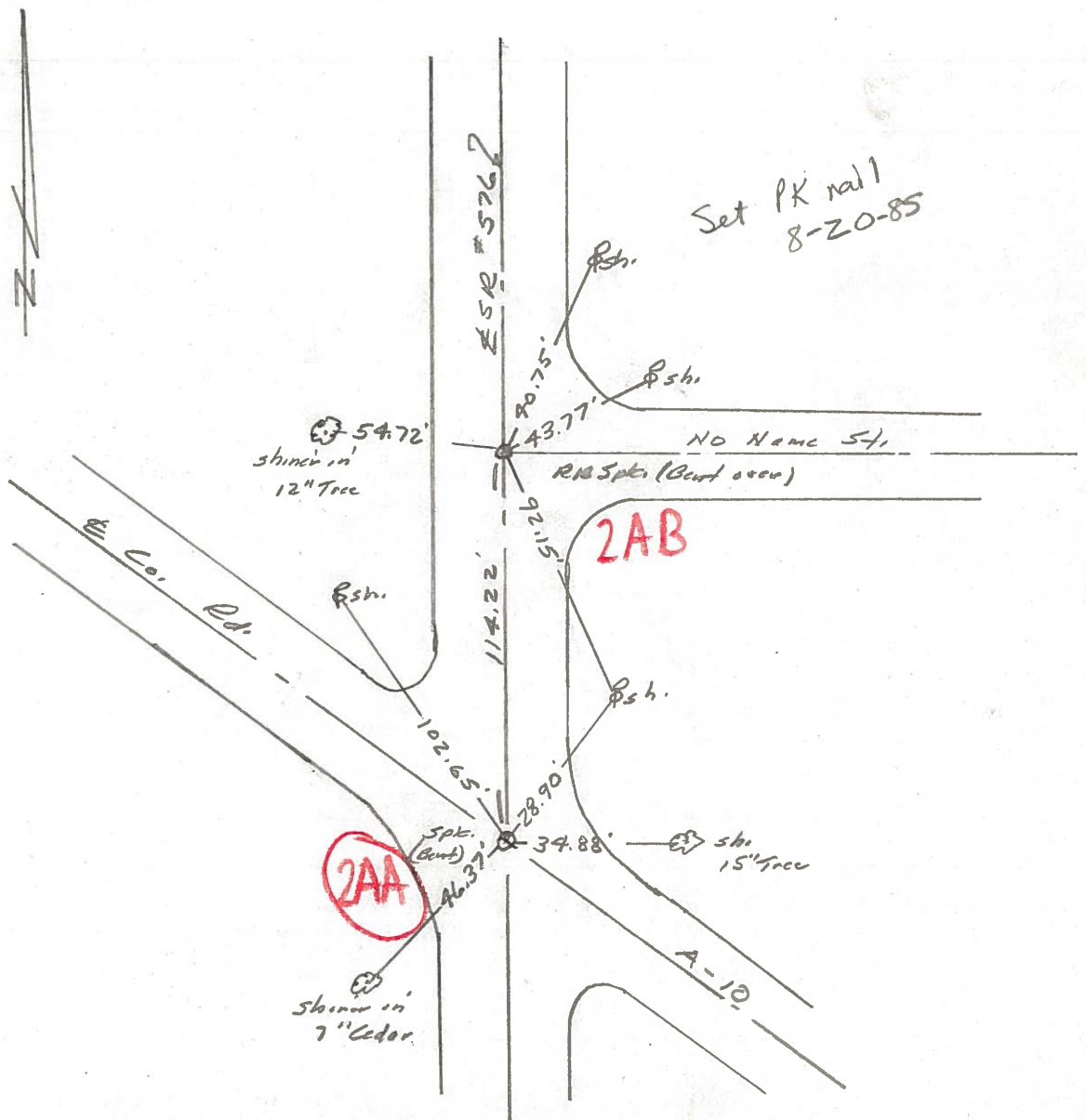
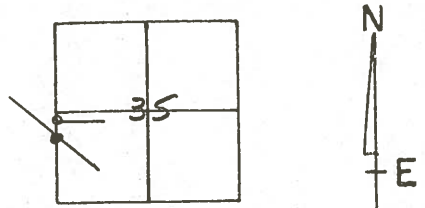
TYPE MONUMENT R. R. Spts.

ON SURFACE - BELOW 3" below

LEFT - PAV'T. - RIGHT

 TO EDGE PAVEMENT

S.L.M.



County Williams S.R. 576

Date 18 Aug. 80

Township Center

Weather Cloudy

Section 35

Temp. 67°

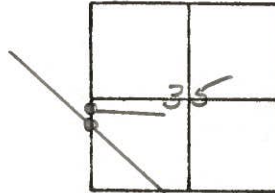
T N, R E

Personnel L. Stone

R. Michalak

P. Newser

D. Curtis



REF. NO. **2AA**

