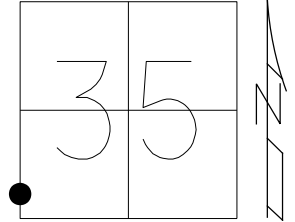


O.D.O.T. DISTRICT 2 SURVEY OFFICE (USE ONLY)

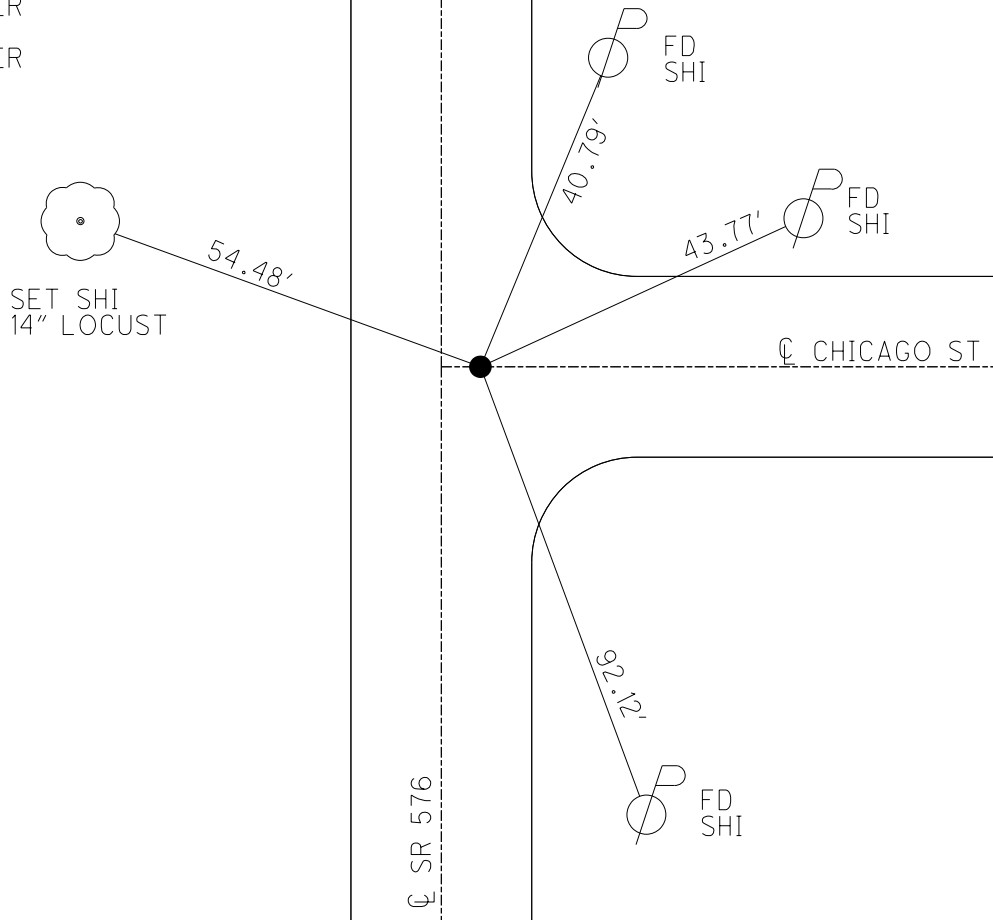
PERSONNEL _____ REFERENCE NO. 2 AB SHEET 5 OF 15
 NOTES ASTON DATE 3/29/24 ROUTE SR 576
 H.C. RHOADES WEATHER CLEAR COUNTY WILLIAMS
 R.C. ASTON TEMP. 44° TOWNSHIP CENTER
 DWG BY RHOADES PID CHIP SEAL SECTION 35
 T 6 N R 2 E

TYPE MONUMENT MAG SHANK
 ON SURFACE - ~~BELOW~~ ON
 OFFSET \odot PAVEMENT 4.2' ~~ET~~ : RT
6.3' TO RT EDGE PAVEMENT
 STATION: 13+50



HORZ. DATUM: NAD83 2011 GEOID: NAVD88 2018
 GRID: NORTHING: 649629.748 EASTING: 1389349.824

RECORD:
 FD P.K./WASHER
 8/24/93, MB
 SET P.K./WASHER
 NEWREF4
 7/26/12, DCH
 FD MAG/WASHER
 12/15/20, JMR
 FD MAG/WASHER
 REF2AB
 6/28/23, JMR
 FD MAG SHANK
 3/29/24, JMR



O.D.O.T. DISTRICT 2 SURVEY OFFICE (USE ONLY)

PERSONNEL

REFERENCE NO. 2 AB

SHEET 4 OF 14

NOTES RHOADES

DATE 12/15/20

ROUTE SR 576

H.C. _____

WEATHER FAIR

COUNTY WILLIAMS

R.C. _____

TEMP. 25°

TOWNSHIP CENTER

DWG BY NIESE

PID NO PID

SECTION 35

T 6 N R 2 E

TYPE MONUMENT _____ MAG/WASHER _____

ON SURFACE - ~~BELOW~~ _____ ON _____

OFFSET ☉ PAVEMENT 3.4' LT : RT

6.3' TO RT EDGE PAVEMENT

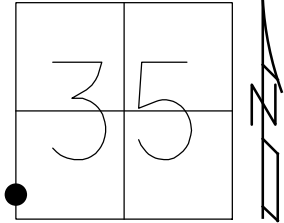
STATION: 13+50

HORZ. DATUM: NAD83 2011

GEOID: NAVD88 2018

GRID: NORTHING: 649629.748

EASTING: 1389349.824



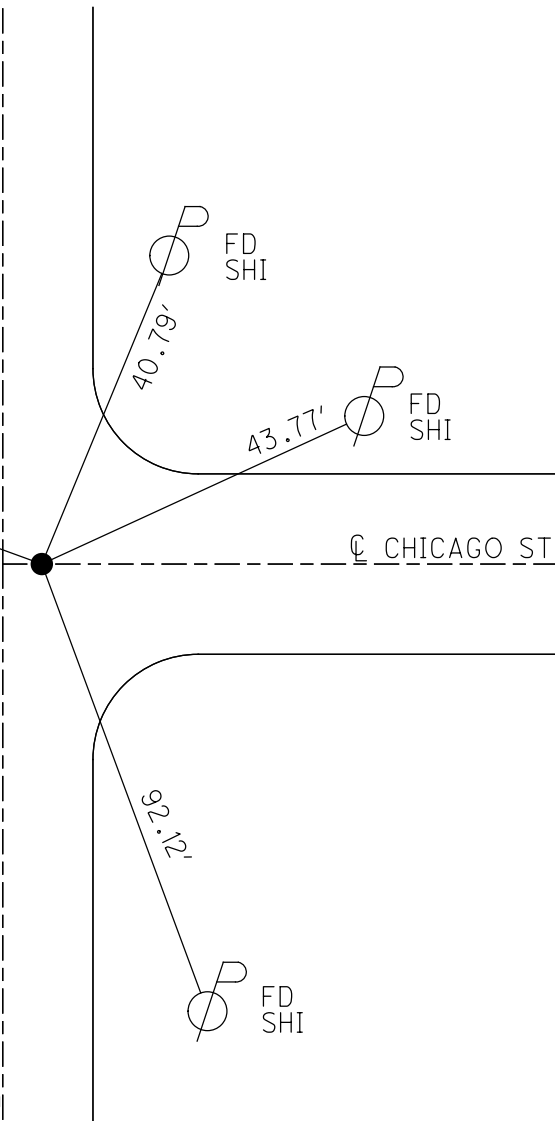
RECORD:
 FD P.K./WASHER
 8/24/93, MB
 SET P.K./WASHER
 NEWREF 4
 7/26/12, DCH
 FD MAG/WASHER
 12/15/20, JMR

SET SHI
 14" LOCUST



54.48'

☉ SR 576



☉ CHICAGO ST

FD SHI

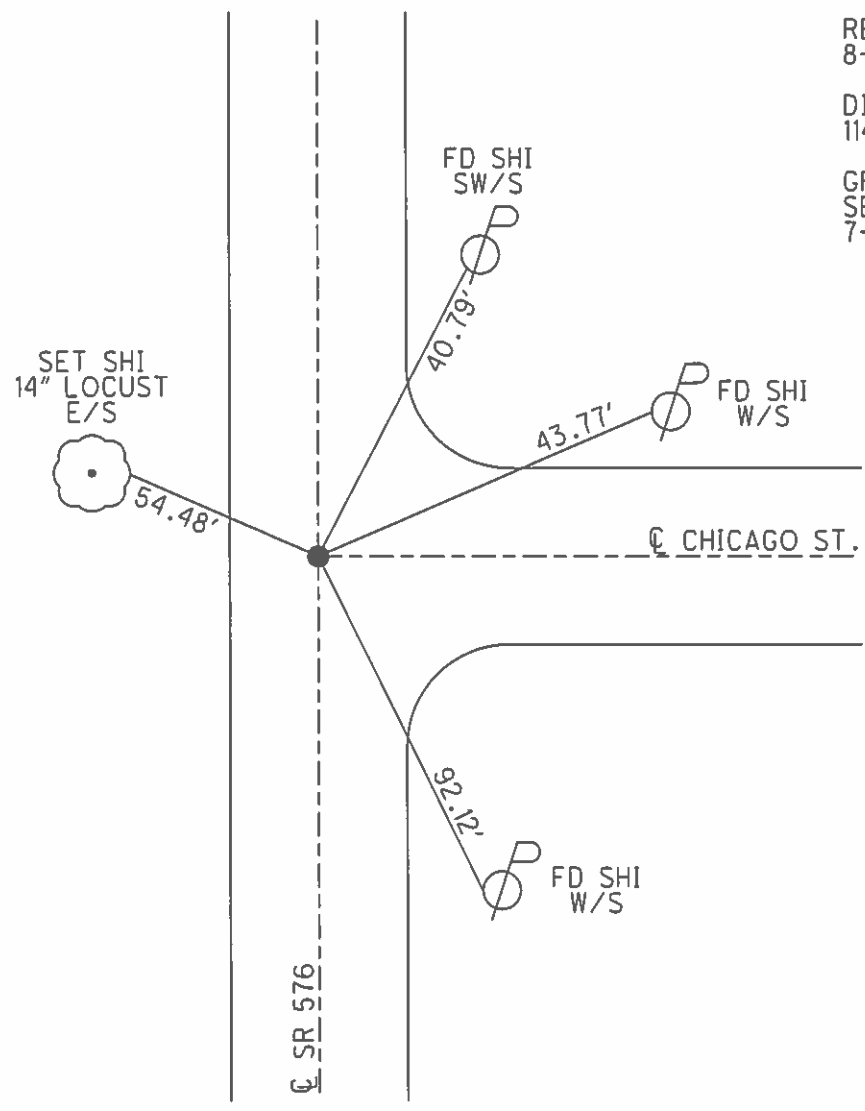
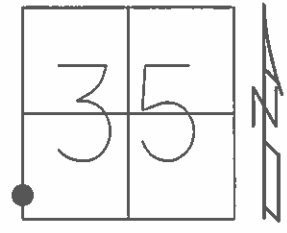
FD SHI

FD SHI

O.D.O.T. DISTRICT 2 SURVEY OFFICE (USE ONLY)

PERSONNEL _____ REFERENCE NO. 2 AB SHEET 4 OF 14
 NOTES HOMAN DATE 7-09-12 ROUTE SR 576
 H.C. ROUSOS WEATHER CLEAR COUNTY WILLIAMS
 R.C. HOMAN TEMP. 75° TOWNSHIP CENTER
 _____ SECTION 35
 _____ T 6 N R 2 E

TYPE MONUMENT PK
 ON SURFACE - ~~BELOW~~ ON _____
~~LEFT~~ - Q PAV'T - RIGHT 3.4'
6.3 TO RT EDGE PAVEMENT
 S.L.M. 13+50
 Grid: Northing: 649629.748 Easting: 1389349.824



RESET PK/WASHERS
 8-24-93, M.B.
 DISTANCE TO REF 2 AA
 114.22' (REC)
 GPS, NEWREF4
 SET PK/WASHER
 7-26-12, DCH

O.D.O.T. DISTRICT 2 SURVEY OFFICE

PERSONNEL

REFERENCE NO. 2

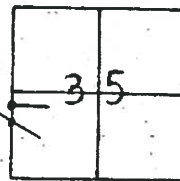
SHEET 2 OF 16

NOTES JAN DUSEN
 H.C. CORDES
 R.C. BARNHISEL
OTTO

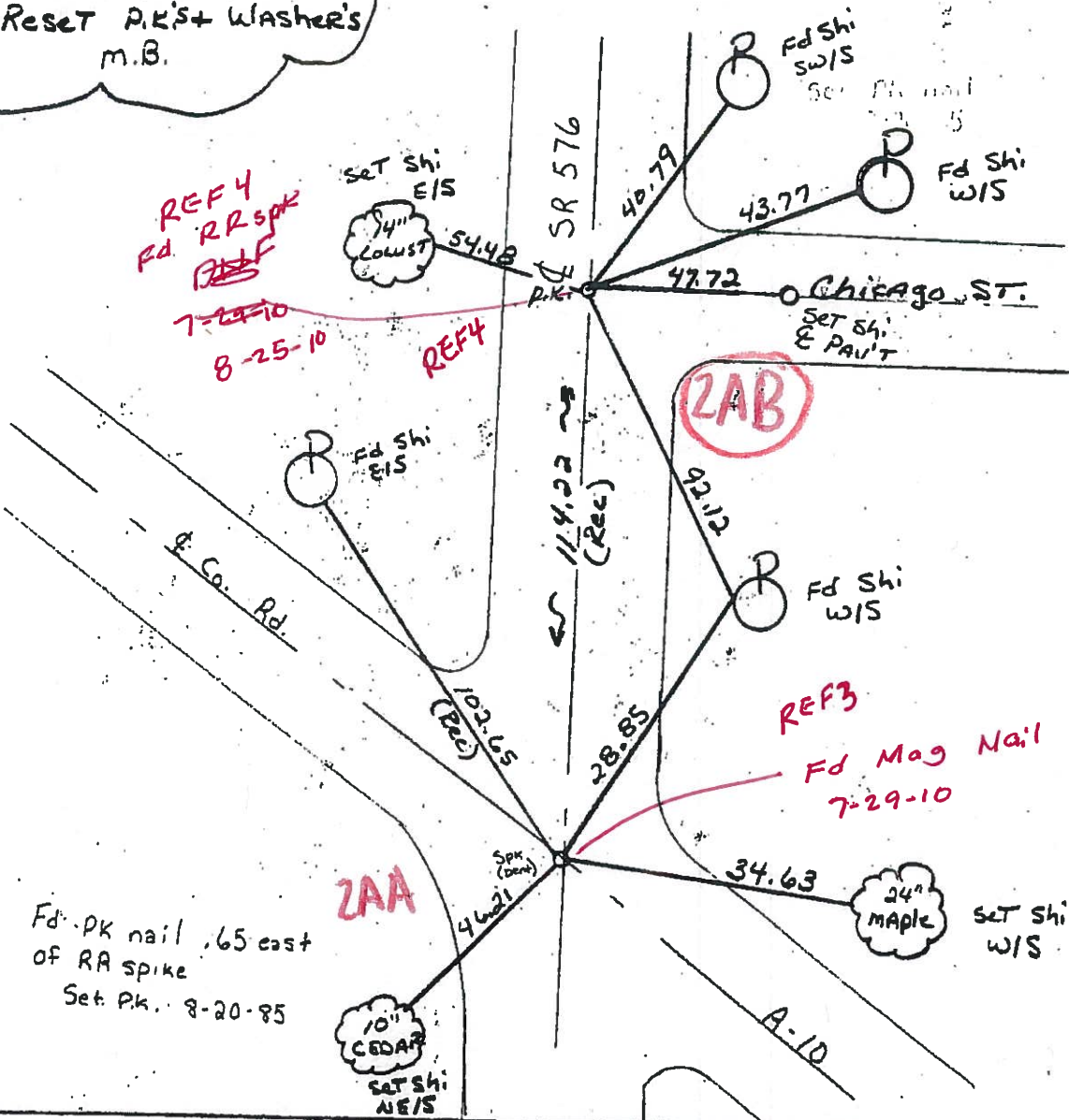
DATE 6-11-93
 WEATHER CLEAR
 TEMP. +65°

ROUTE S.R. 576
 COUNTY Williams
 TOWNSHIP Center
 SECTION 35

	PT "A"	PT "B"
TYPE MONUMENT	RR Spike	P.K.
ON SURFACE - BELOW	yes	yes
SET - & PAV'T. - RIGHT	2.8	3.4
- TO RT EDGE PAVEMENT	7.3	6.3
S.L.M.	12+36	13+50



8-24-93
 Reset P.K.'s + Washer's
 m.B.



Fd. PK nail .65 east
 of RR spike
 Set. Pk. 8-20-85

REF 3
 Fd Mag Nail
 7-29-10

ZAA
 10" CEDAR
 SET SHI
 W/S

24" MAPLE
 SET SHI
 W/S

Resurfaced 1993

O.D.O.T. DISTRICT 2 SURVEY OFFICE

PERSONNEL

REFERENCE NO. 2

SHEET 2 OF

NOTES 1. Stone

H.C. D. Curtis

R.C. R. Michalek

J. Housholder

DATE 6 Sept. 85

WEATHER Rain

TEMP. 75°

ROUTE #576

COUNTY Williams

TOWNSHIP Crocker

SECTION 35

T R

TYPE MONUMENT R. R. Spts.

ON SURFACE - BELOW 3" below

LEFT - PAV'T. - RIGHT

 TO EDGE PAVEMENT

S.L.M.

