

O.D.O.T. DISTRICT 2 SURVEY OFFICE (USE ONLY)

PERSONNEL _____ REFERENCE NO. 2 B SHEET 6 OF 15

NOTES ASTON DATE 3/29/24 ROUTE SR 576
 H.C. RHOADES WEATHER SUNNY COUNTY WILLIAMS
 R.C. ASTON TEMP. 44° TOWNSHIP CENTER

SECTION 35
T 6 N R 2 E

DWG BY RHOADES PID CHIP SEAL

TYPE MONUMENT P.K./WASHER

ON SURFACE - ~~BELOW~~ ON _____

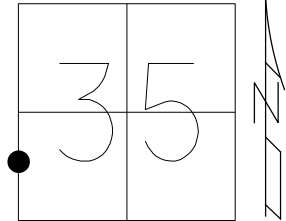
OFFSET \odot PAVEMENT 3.9' ~~LT~~ : RT

6.9' TO RT EDGE PAVEMENT

STATION: 16+54.15

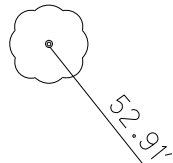
HORIZ.DATUM: NAD83 2011 GEOID: NAVD88 2018

GRID: NORTHING: 649935.161 EASTING: 1389355.997



RECORD:
 SET PK/WASHER
 8-24-93, MB
 FD LG.R.R.SPIKE
 3" DOWN
 REF5
 7/6/12, DCH
 SET P.K./WASHER
 NEWREF5
 7-26-12, DCH
 FD P.K./WASHER
 REF2B
 6/28/23,
 3/29/24, JMR

FD SHI
 30" ASH



2C

BOTTOM
 BOLT
 STOP SIGN

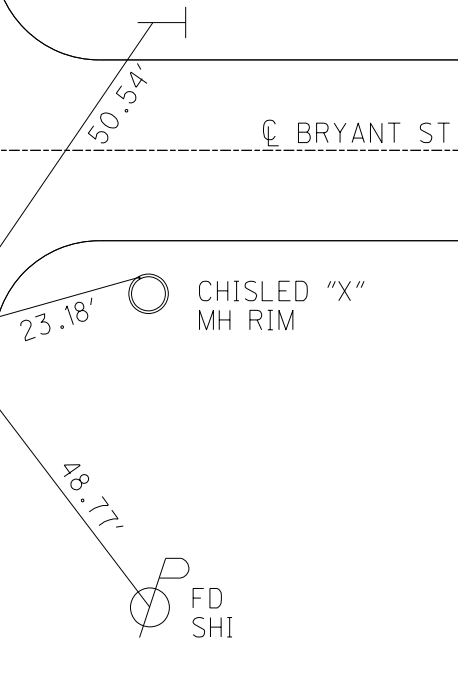
\odot BRYANT ST

CHISLED "X"
 MH RIM

FD
 SHI

DIST .2B-2C= 34.31'

\odot SR 576

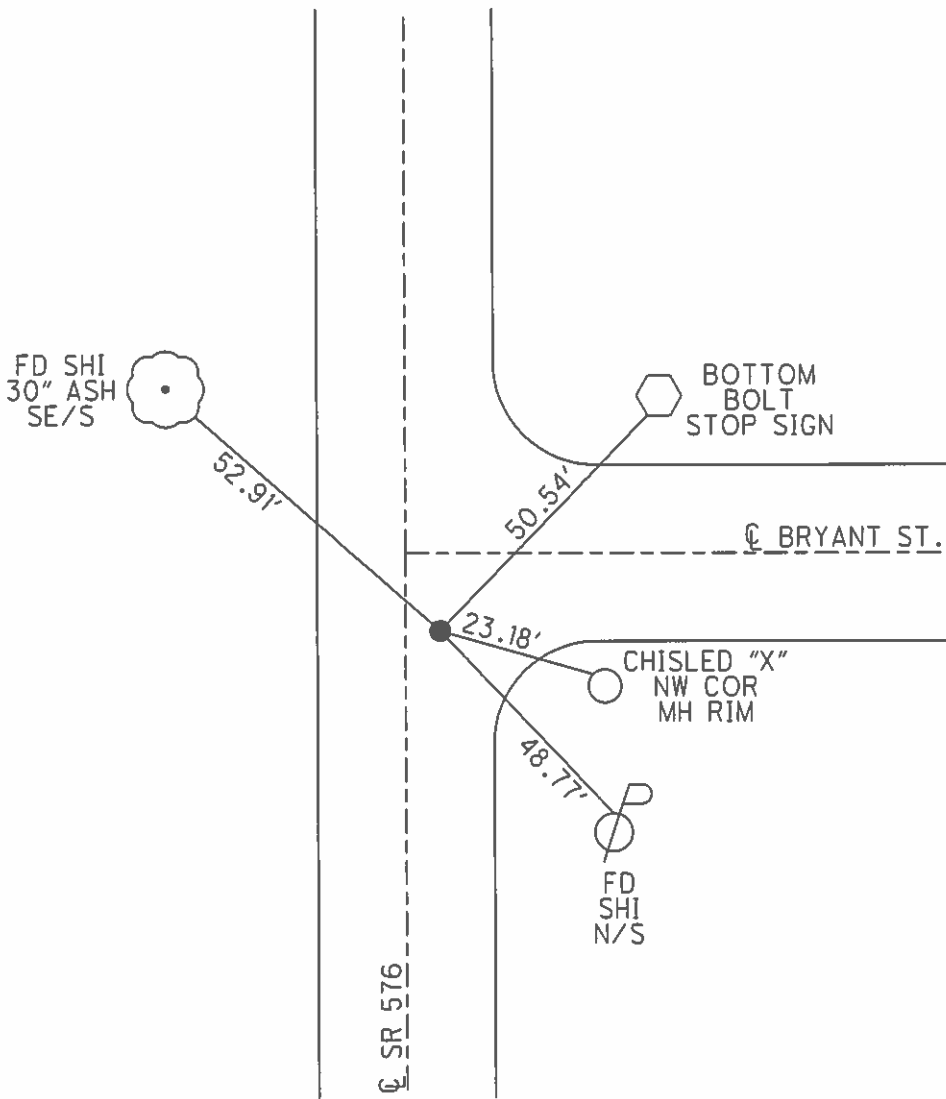
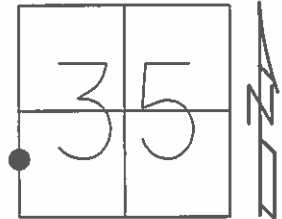


O.D.O.T. DISTRICT 2 SURVEY OFFICE (USE ONLY)

PERSONNEL _____ REFERENCE NO. 2 B SHEET 5 OF 14

NOTES HOMAN DATE 7-06-12 ROUTE SR 576
 H.C. HOMAN WEATHER SUNNY COUNTY WILLIAMS
 R.C. HARBAUGH TEMP. 90° TOWNSHIP CENTER
 SECTION 35
 T 6 N R 2 E

TYPE MONUMENT LG RR SPIKE
~~ON SURFACE~~ - BELOW 3"
~~LEFT~~ - Q PAV'T - RIGHT 3.2'
6.9 TO RT EDGE PAVEMENT
 S.L.M. 16+54.15
 Grid: Northing: 649935.161 Easting: 1389355.997



RESET PK/WASHER
 8-24-93, M.B.
 (REC) REF 5
 FD LARGE RR SPK
 GPS, NEWREF5
 SET PK/WASHER
 7-26-12, DCH

O.D.O.T. DISTRICT 2 SURVEY OFFICE

PERSONNEL _____

REFERENCE NO. 2-A

SHEET 3 OF 16

NOTES BARNHISEL

H.C. CORDES

DATE 6-11-93

ROUTE 576

R.C. JAN DUSEN

WEATHER CLEAR

COUNTY WILLIAMS

OTTO

TEMP. +65°

TOWNSHIP CENTER

SECTION 35

T6 N R 2 E

TYPE MONUMENT PK NAIL

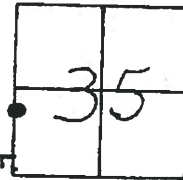
ON SURFACE - ~~NO~~ YES

~~LEFT~~ - PAV'T. - RIGHT 3.2

6.9 TO RT EDGE PAVEMENT

S.L.M. 16 + 90

11' NORTH OF E BRYANT ST



Reset PK & WASHER
8-24-93
MB

S.E. 576

1.5' UP ON FACE
MAIL BOX
POST

Fd Shi
SE/S
24" ASH

14" ASH

Fd Shi
SW/S

PK Shank
Fd Hole in
Pavement
7-29-10
8-25-10

26.41

53.71

64.47

REFC

E PAV'T
BRYANT ST.

33'±

81.88

(2B)
Fd RR Spike
7-29-10
REFS

Fd Shi
N/S

E PAV'T