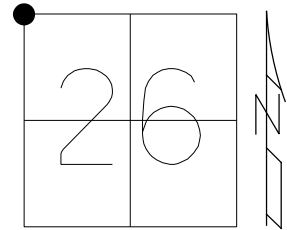


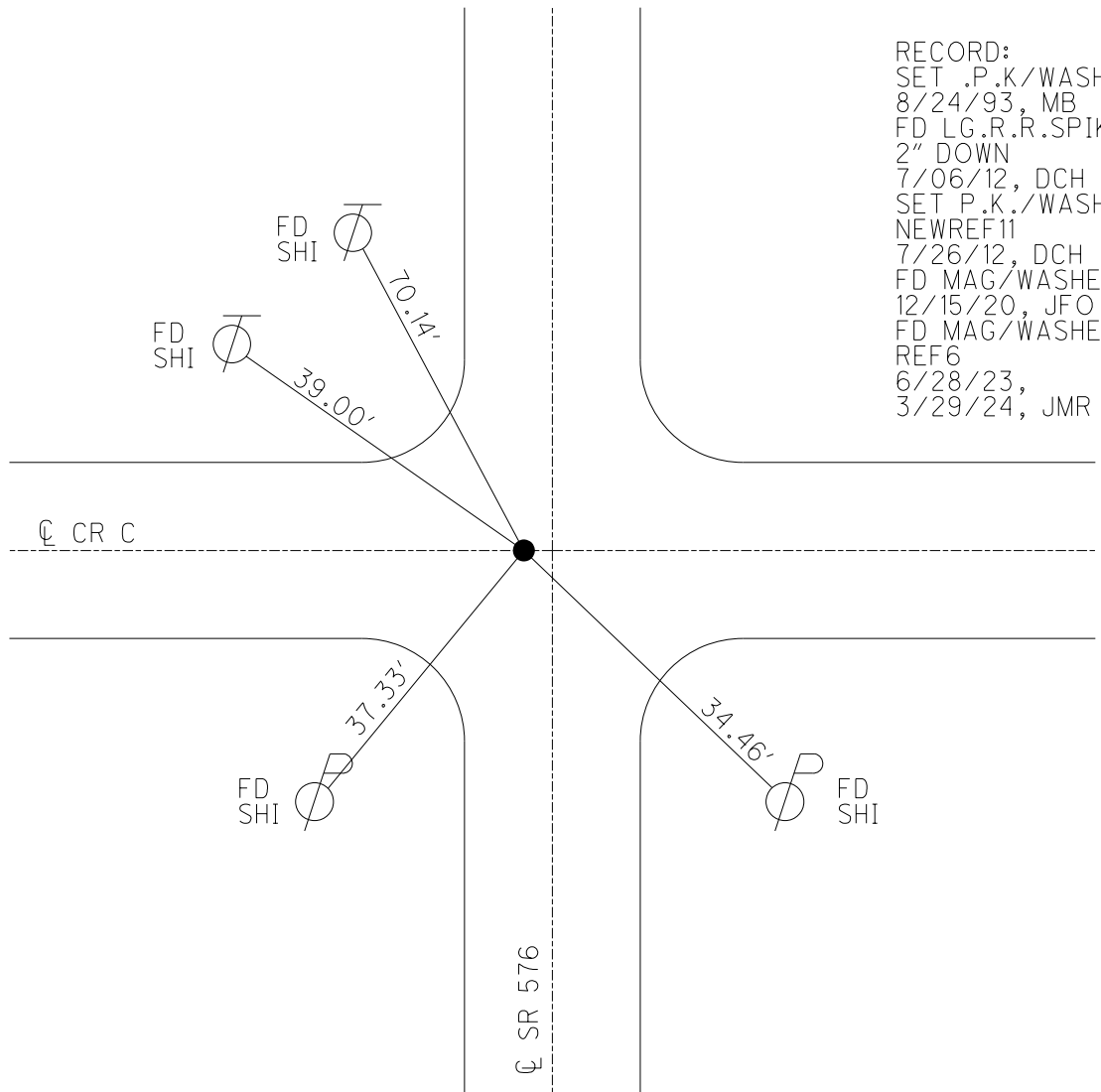
O.D.O.T. DISTRICT 2 SURVEY OFFICE (USE ONLY)

PERSONNEL _____ REFERENCE NO. 6 SHEET 12 OF 15
 NOTES ASTON DATE 3/29/24 ROUTE SR 576
 H.C. RHOADES WEATHER CLEAR COUNTY WILLIAMS
 R.C. ASTON TEMP. 44° TOWNSHIP CENTER
 DWG BY RHOADES PID CHIP SEAL SECTION 26
 T 6 N R 2 E

TYPE MONUMENT MAG/WASHER
 ON SURFACE - ~~BELOW~~ ON
 OFFSET ☉ PAVEMENT 2.2' LT : ~~RT~~
11.8' TO RT EDGE PAVEMENT
 STATION: 105+95



HORZ. DATUM: NAD83 2011 GEOID: NAVD88 2018
 GRID: NORTHING: 658873.924 EASTING: 1389452.737



RECORD:
 SET .P.K./WASHER
 8/24/93, MB
 FD LG.R.R.SPIKE
 2" DOWN
 7/06/12, DCH
 SET P.K./WASHER
 NEWREF11
 7/26/12, DCH
 FD MAG/WASHER
 12/15/20, JFO
 FD MAG/WASHER
 REF6
 6/28/23,
 3/29/24, JMR

O.D.O.T. DISTRICT 2 SURVEY OFFICE (USE ONLY)

PERSONNEL _____

REFERENCE NO. 6

SHEET 11 OF 14

NOTES RHOADES DATE 12/15/20

ROUTE SR 576

H.C. _____ WEATHER FAIR

COUNTY WILLIAMS

R.C. _____ TEMP. 25°

TOWNSHIP CENTER

SECTION 26

DWG BY NIESE PID NO PID

T 6 N R 2 E

TYPE MONUMENT MAG/WASHER

ON SURFACE - ~~BELOW~~ ON _____

OFFSET \odot PAVEMENT 2.2' LT : ~~RT~~

11.8' TO RT EDGE PAVEMENT

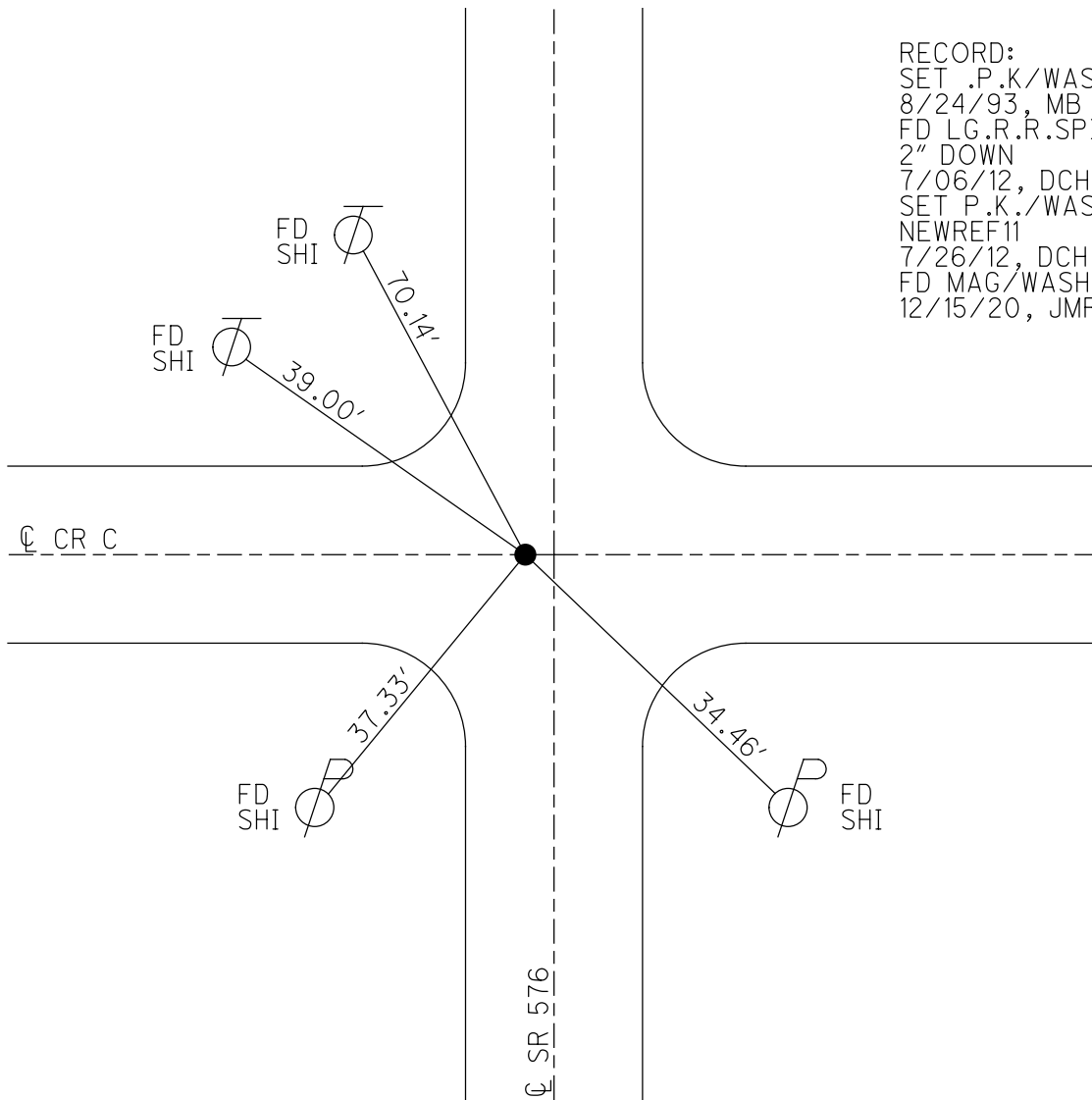
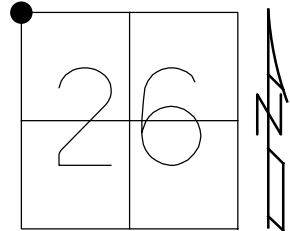
STATION: 105+95

HORIZ.DATUM: NAD83 2011

GEOID: NAVD88 2018

GRID: NORTHING: 658873.924

EASTING: 1389452.737

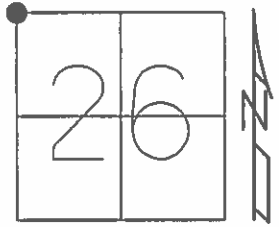


RECORD:
 SET .P.K./WASHER
 8/24/93, MB
 FD LG.R.R.SPIKE
 2" DOWN
 7/06/12, DCH
 SET P.K./WASHER
 NEWREF11
 7/26/12, DCH
 FD MAG/WASHER
 12/15/20, JMR

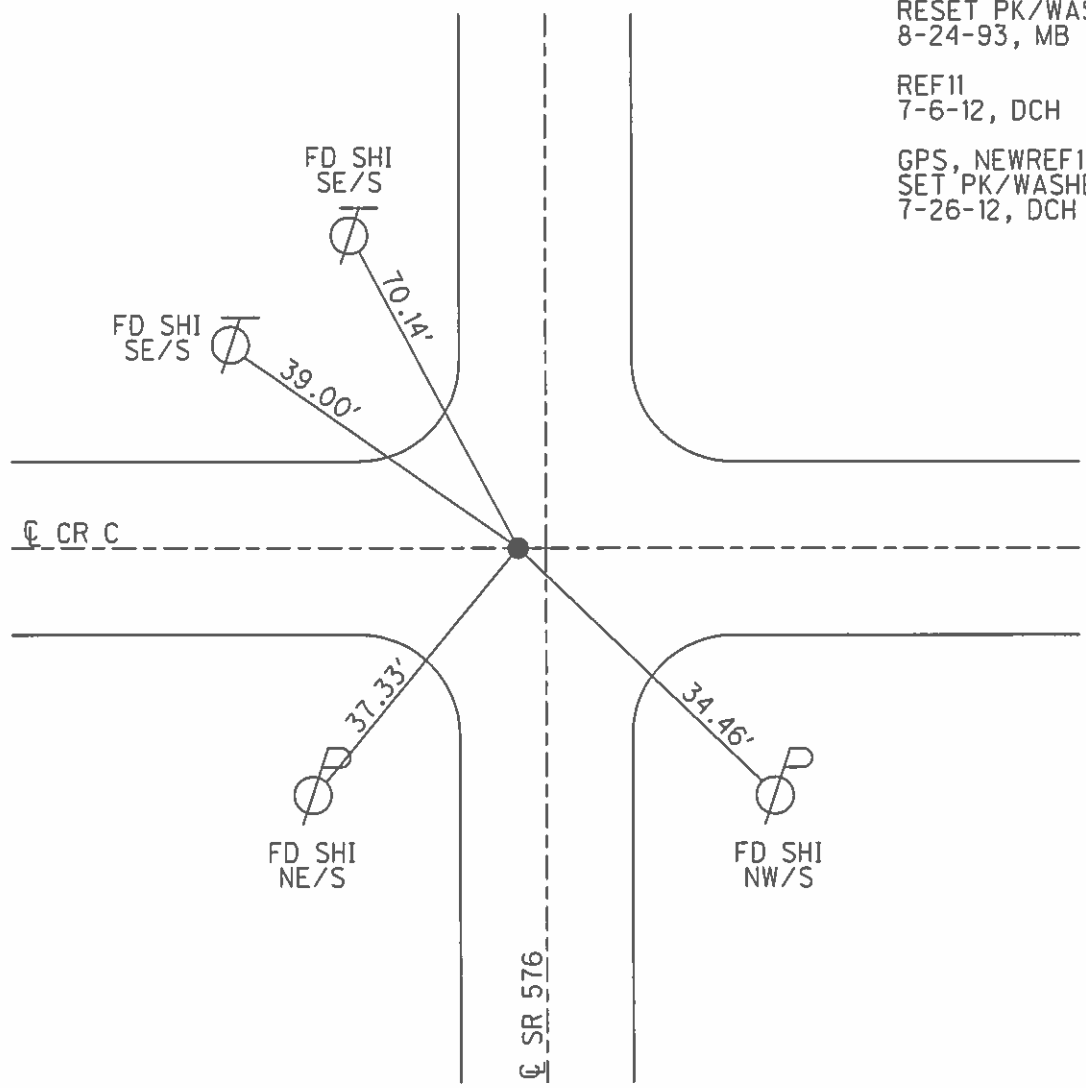
O.D.O.T. DISTRICT 2 SURVEY OFFICE (USE ONLY)

PERSONNEL _____ REFERENCE NO. 6 SHEET 11 OF 14
 NOTES HOMAN DATE 7-06-12 ROUTE SR 576
 H.C. HOMAN WEATHER SUNNY COUNTY WILLIAMS
 R.C. HARBAUGH TEMP. 90° TOWNSHIP CENTER
 SECTION 26
 T 6 N R 2 E

TYPE MONUMENT LG RR SPK
~~ON SURFACE~~ - BELOW 2"
 LEFT - CL PAV'T - ~~RIGHT~~ 2.2' (ON CL E&W)
11.8 TO RT EDGE PAVEMENT
 S.L.M. 105+95



Grid: Northing: 658873.924 Easting: 1389452.737



RESET PK/WASHER
 8-24-93, MB
 REF11
 7-6-12, DCH
 GPS, NEWREF11
 SET PK/WASHER
 7-26-12, DCH

O.D.O.T. DISTRICT 2 SURVEY OFFICE

PERSONNEL

REFERENCE NO. 4

SHEET 7 OF 16

NOTES VAN DYSEN

H.C. CORDES

DATE 6-10-93

ROUTE 576

R.C. BAENHISEL III

WEATHER Cloudy

COUNTY Williams

OTTO

TEMP. +60°

TOWNSHIP CENTER

SECTION 26

T. 6 N. R. 2 E.

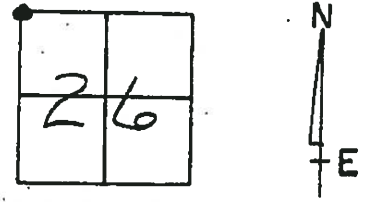
TYPE MONUMENT Sm RR Spk

ON SURFACE - ~~NO~~ YES

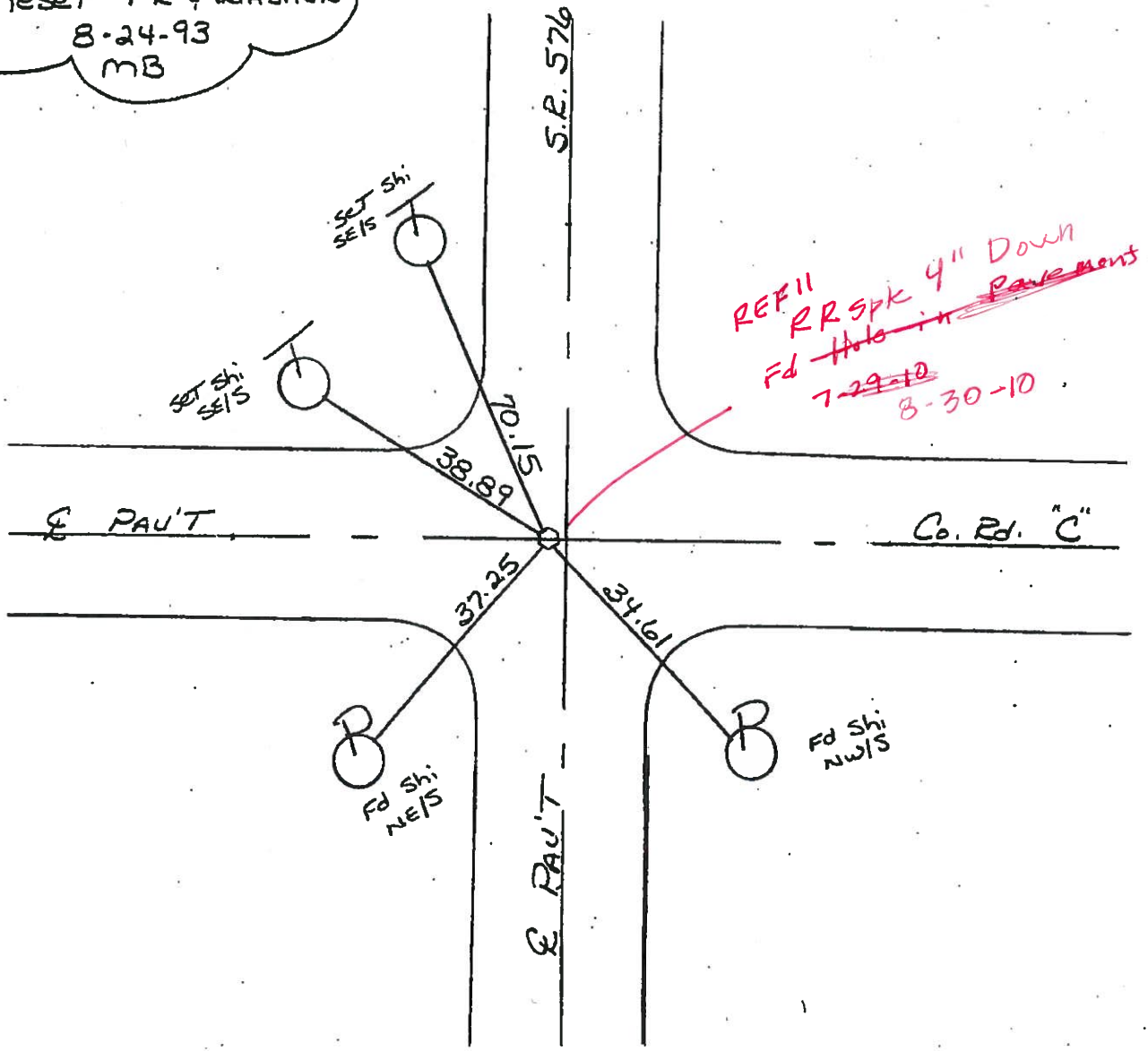
LEFT- & PAV'T. - ~~NO~~ 2.2

11.8 TO RT EDGE PAVEMENT

S.L.M. 105+95 ON E E&W



Reset PK & WASHER
8-24-93
MB



O.D.O.T. DISTRICT 2 SURVEY OFFICE

PERSONNEL

REFERENCE NO. 6

SHEET 7 OF

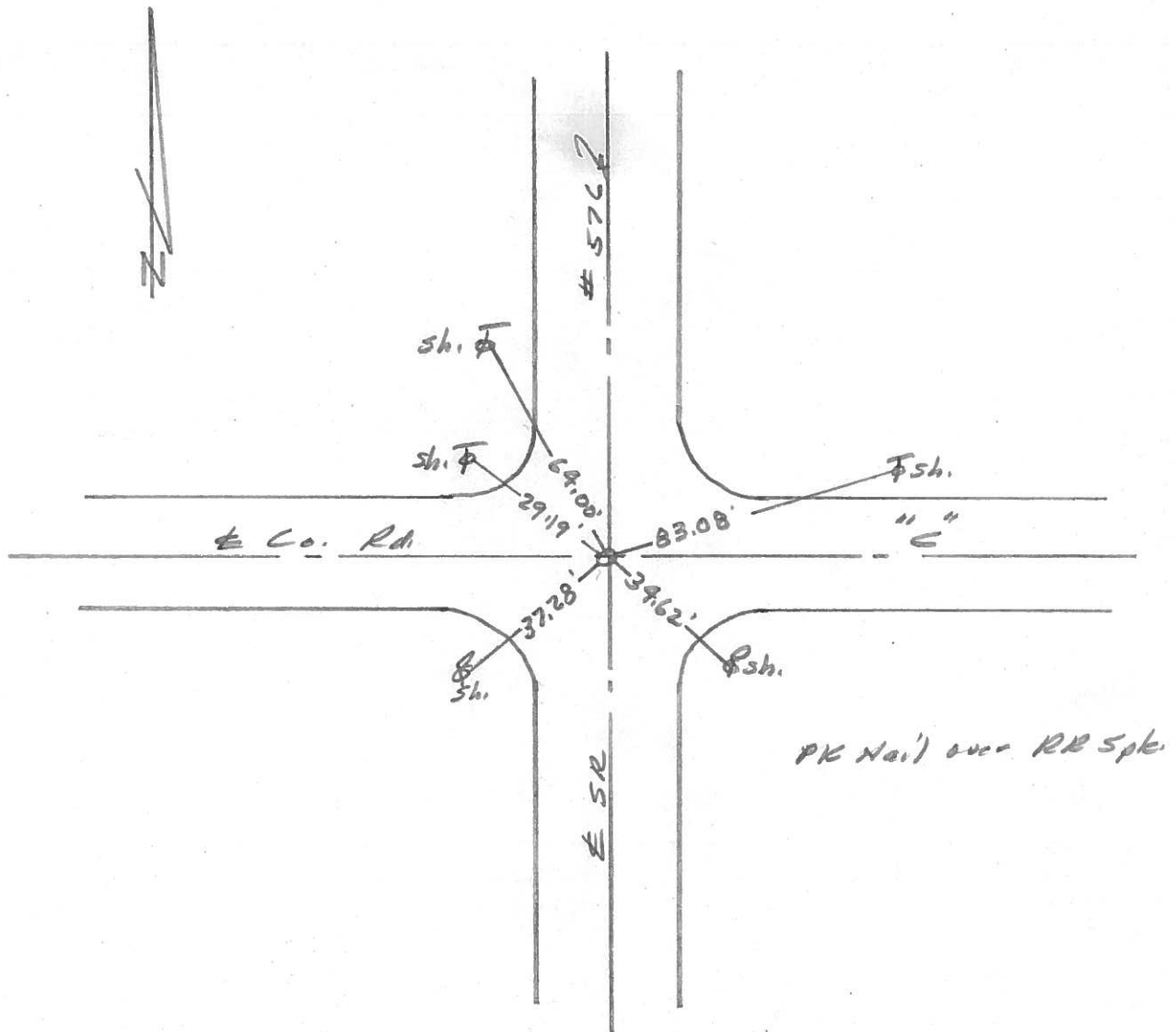
NOTES I. Stone
 H.C. D. Curtis
 R.C. R. Michalek
J. Haushalter

DATE 6 Sept. 85
 WEATHER Rain
 TEMP. 75°

ROUTE SR# 576
 COUNTY Williams
 TOWNSHIP Center
 SECTION 26
 T R

TYPE MONUMENT Ed. Spike
 ON SURFACE - BELOW 2" below
 LEFT - ☉ PAV'T. - RIGHT
 TO EDGE PAVEMENT
 S.L.M. 106+00

22	23
27	26



O.D.O.T. DISTRICT 2 SURVEY OFFICE

SHEET 7 OF

County Williams S.R. 576

Date 18 Aug. 80

Township Center

Weather Cloudy

Section 22-23-26-27

Temp. 75°

T N, R E

Personnel I. Stone

R. Michalak

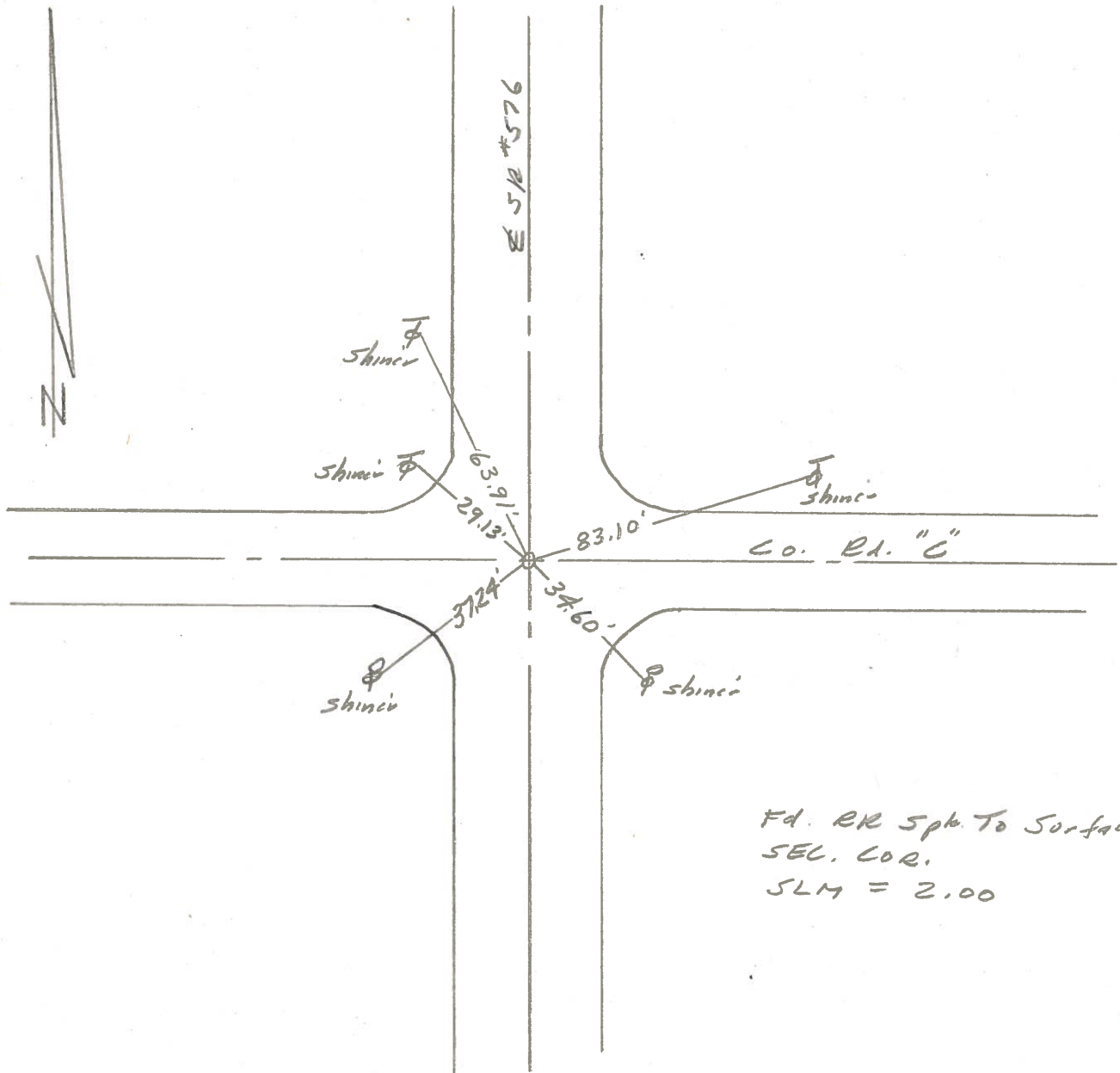
P. Neuser

D. Curtis

22	23
27	26



REF. No. 6



Fd. RR Sph. To Surface
 SEL. COR.
 SLM = 2.00

O.D.O.T. DISTRICT 2 SURVEY OFFICE

SHEET 1 OF 3

County Williams S.R. 576

Township Center

Section 22-23-26-27

T N, R E

Personnel I. Stone

P. Neuse

R. Michalak

D. Curtis

Date 19 Jan. 1982

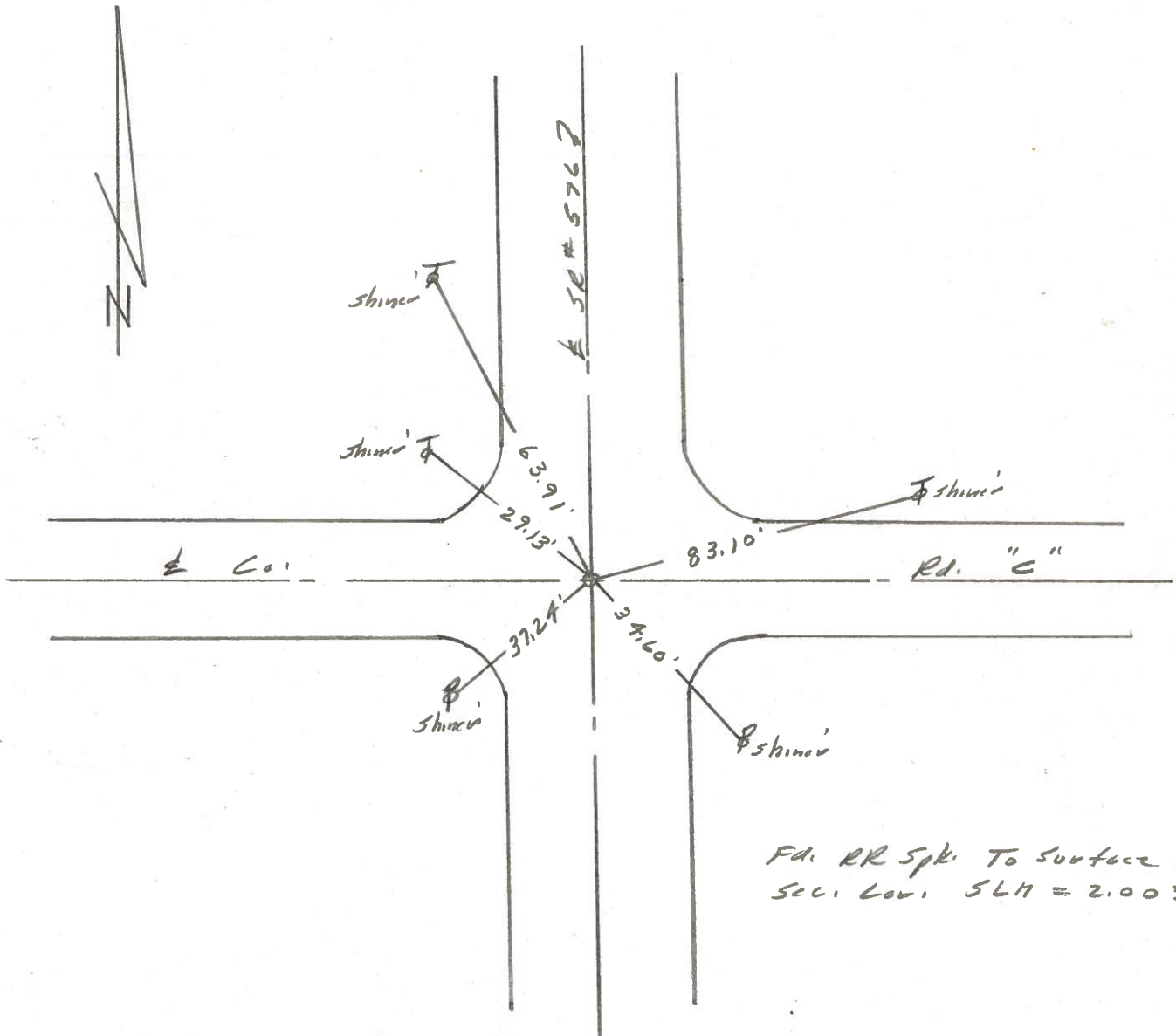
Weather Cold

Temp. 15°

22	23
27	26



REF. NO. 6



PERSONNEL	TITLE	PERSONNEL	TITLE
Louys			
Hoover			
Beach			

COUNTY Wi. DATE 4-7-50

S. R. 576 WEATHER Fair.

SEC. Defiance Co. Line to Pt. 34 TEMP. 50°

DESCRIPTION	LEFT	CENTER LINE	RIGHT	JOB NO.
<u>Witnesses to control Points</u>				

