

O.D.O.T. DISTRICT 2 SURVEY OFFICE (USE ONLY)

PERSONNEL _____ REFERENCE NO. 7 A SHEET 14 OF 14
 NOTES RHOADES DATE 8/5/22 ROUTE SR 576
 H.C. RHOADES WEATHER CLOUDY COUNTY WILLIAMS
 R.C. WHITAKER TEMP. 73° TOWNSHIP CENTER
 DWG BY RHOADES PID PAVETRAIN SECTION 23
 T 6 N R 2 E

TYPE MONUMENT LG.R.R.SPIKE

~~ON SURFACE~~ - BELOW 3"

OFFSET \varnothing PAVEMENT ON LT : RT

10.6' TO RT EDGE PAVEMENT

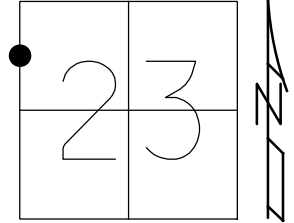
STATION: 139+14

HORIZ.DATUM: NAD83 2011

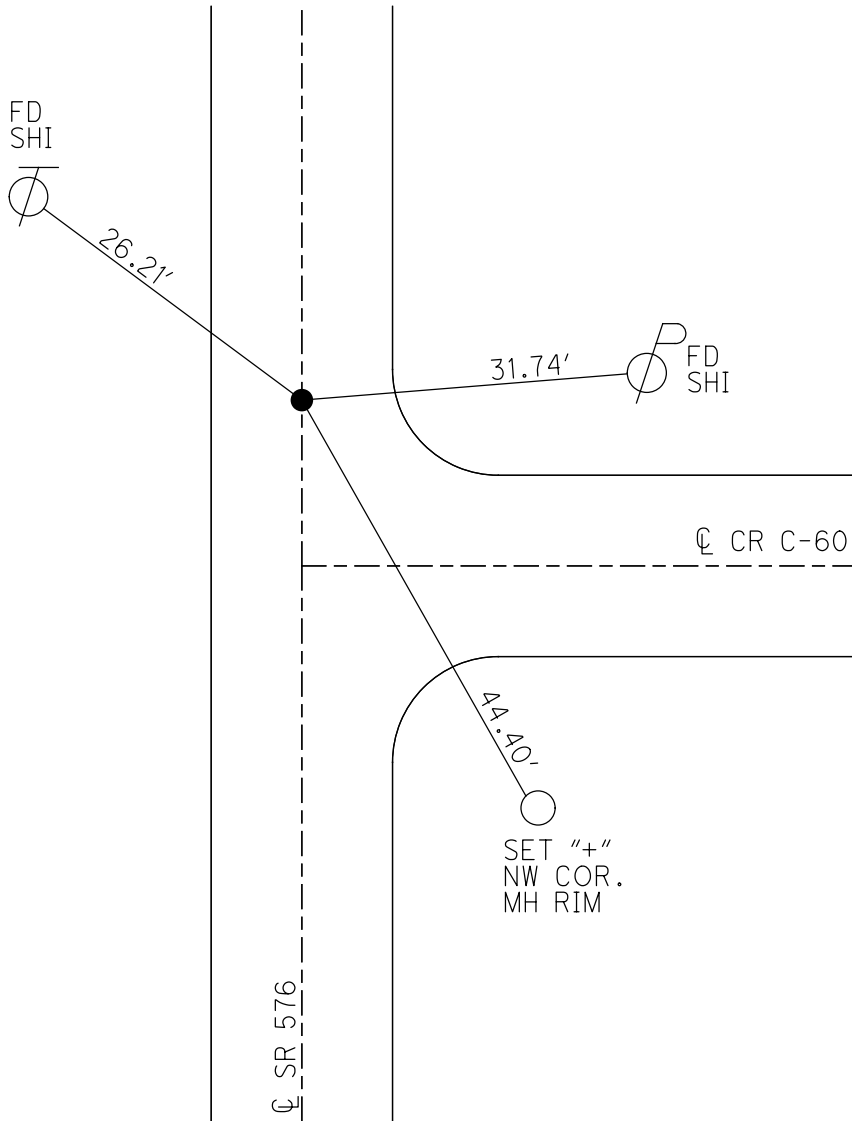
GEOID: NAVD88 2018

GRID: NORTHING: 662191.757

EASTING: 1389464.218



RECORD:
 FD R.R.SPIKE
 3" DOWN
 8/20/85
 SET P.K./WASHER
 8/24/93, MB
 FD R.R.SPIKE
 2" DOWN
 REF14
 7/6/12, DCH
 SET P.K./WASHER
 NEWREF14
 7/26/12, DCH
 FD LG.R.R.SPIKE
 W/DIMPLE
 3" DOWN
 REFA7
 8/5/22,
 2/2/23, JMR



O.D.O.T. DISTRICT 2 SURVEY OFFICE (USE ONLY)

PERSONNEL _____ REFERENCE NO. 7 A SHEET 14 OF 14

NOTES HOMAN DATE 7-06-12 ROUTE SR 576
 H.C. HOMAN WEATHER SUNNY COUNTY WILLIAMS
 R.C. HARBAUGH TEMP. 85° TOWNSHIP CENTER
 SECTION 23
 T 6 N R 2 E

TYPE MONUMENT RR SPIKE

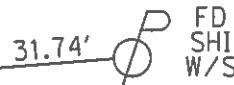
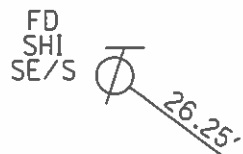
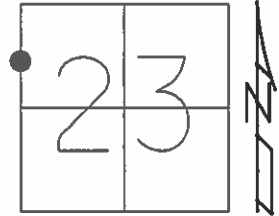
~~ON SURFACE~~ - BELOW 2"

~~LEFT~~ - ☉ PAV'T - ~~RIGHT~~ ON _____

10.6 TO RT EDGE PAVEMENT

S.L.M. 139+14 (18' N OF C-60)

Grid: Northing: 662191.815 Easting: 1389464.101



FD RR SPIKE
3" BELOW 8-20-85

RESET PK/WASHER
8-24-93, MB

FD PK
REF14
7-06-12, DCH

GPS, NEWREF14
SET PK/WASHER
7-26-12, DCH

☉ SR 576

CHISLED "X"
NW CORNER OF
MANHOLE RIM

☉ CR C-60

O.D.O.T. DISTRICT 2 SURVEY OFFICE

PERSONNEL

REFERENCE NO. 7-A

SHEET 10 OF 16

NOTES VAN DUSEN

H.C. CORDES

R.C. BARNHISEL

OTTO

DATE 6-10-93

WEATHER Cloudy

TEMP. +60°

ROUTE S.R. # 576

COUNTY Williams

TOWNSHIP Center

SECTION 23

T 6 N R 2 E

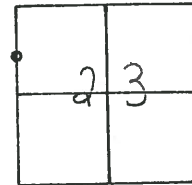
TYPE MONUMENT RR spk

ON SURFACE - ~~BELOW~~ yes

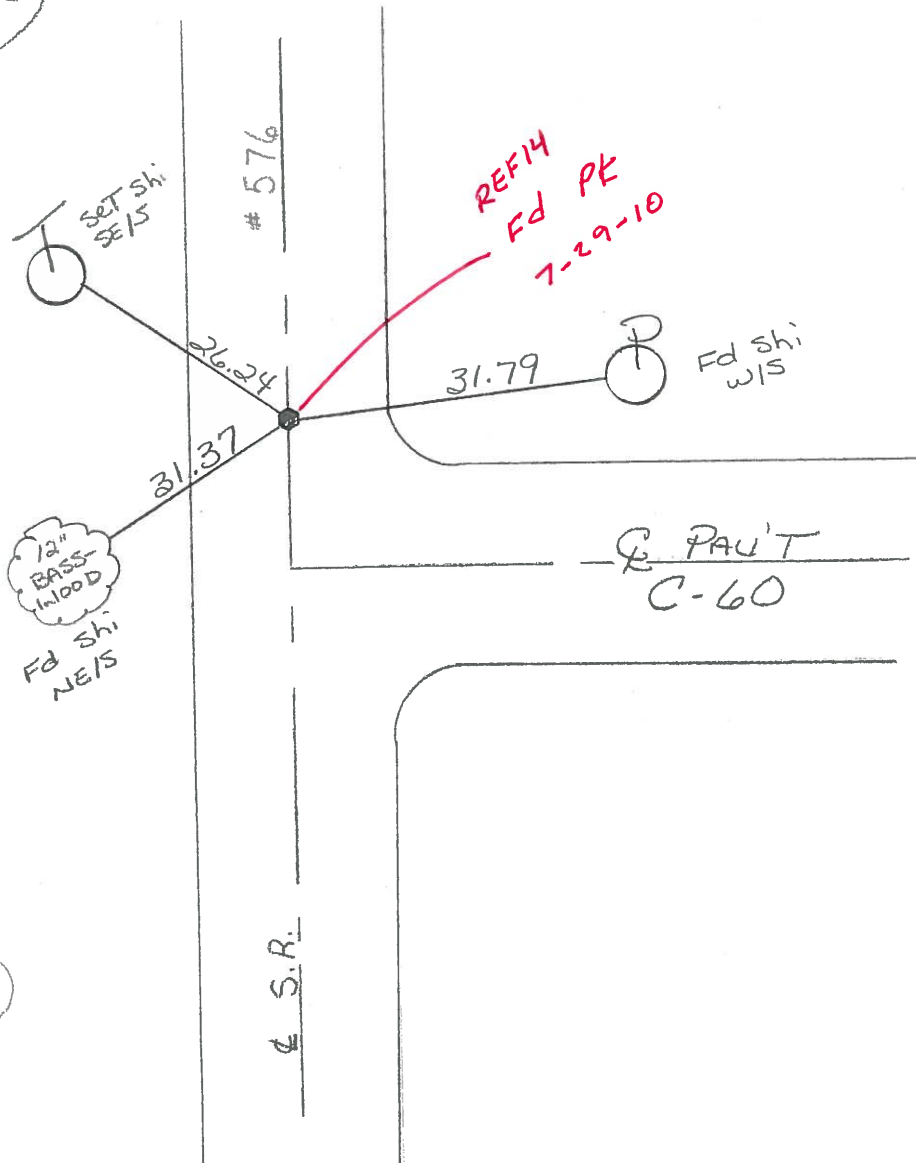
~~LEFT~~ - PAV'T. - ~~RIGHT~~ yes

10.6 TO RT EDGE PAVEMENT

S.L.M. 139+14 18' N. OF C-60



Reset P.K. & WASHER
8-24-93
MB



Fd. RR spk.
3" below 8-20-85

County Williams S.R. 576

Date 16 April '85

Township Center

Weather Sunny

Section _____

Temp. 62°

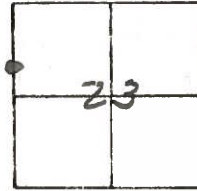
T N, R E

Personnel I. Stone

R. Michalak

D. Curtis

J. Householder



REF. NO. 7-14

139+15



Shiner
 Near edge
 M. Box Post

Shiner
 9' from

35.70'
 18.55'
 31.37'

31.90' Shiner

No Name Street

Fd. RR 5pk.
 3" below 8-20-85