

O.D.O.T. DISTRICT 2 SURVEY OFFICE (USE ONLY)

PERSONNEL

REFERENCE NO. 8

SHEET 3 OF 29

NOTES NIESE

DATE 3-31-21

ROUTE SR 576

H.C. AUBLE

WEATHER WINDY

COUNTY WILLIAMS

R.C. NIESE

TEMP. 39° F

TOWNSHIP CENTER

SECTION 14

DWG BY AUBLE

PID PAVETRAIN

T 6 N R 2 E

TYPE MONUMENT MONBOX W/1" IPIN

ON SURFACE - ~~BELOW~~ ON

OFFSET ☉ PAVEMENT 7.6' LT : ~~RT~~

- TO - EDGE PAVEMENT

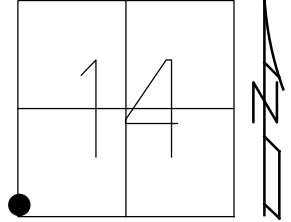
STATION: 160+80.01

HORZ.DATUM: NAD83 (2011)

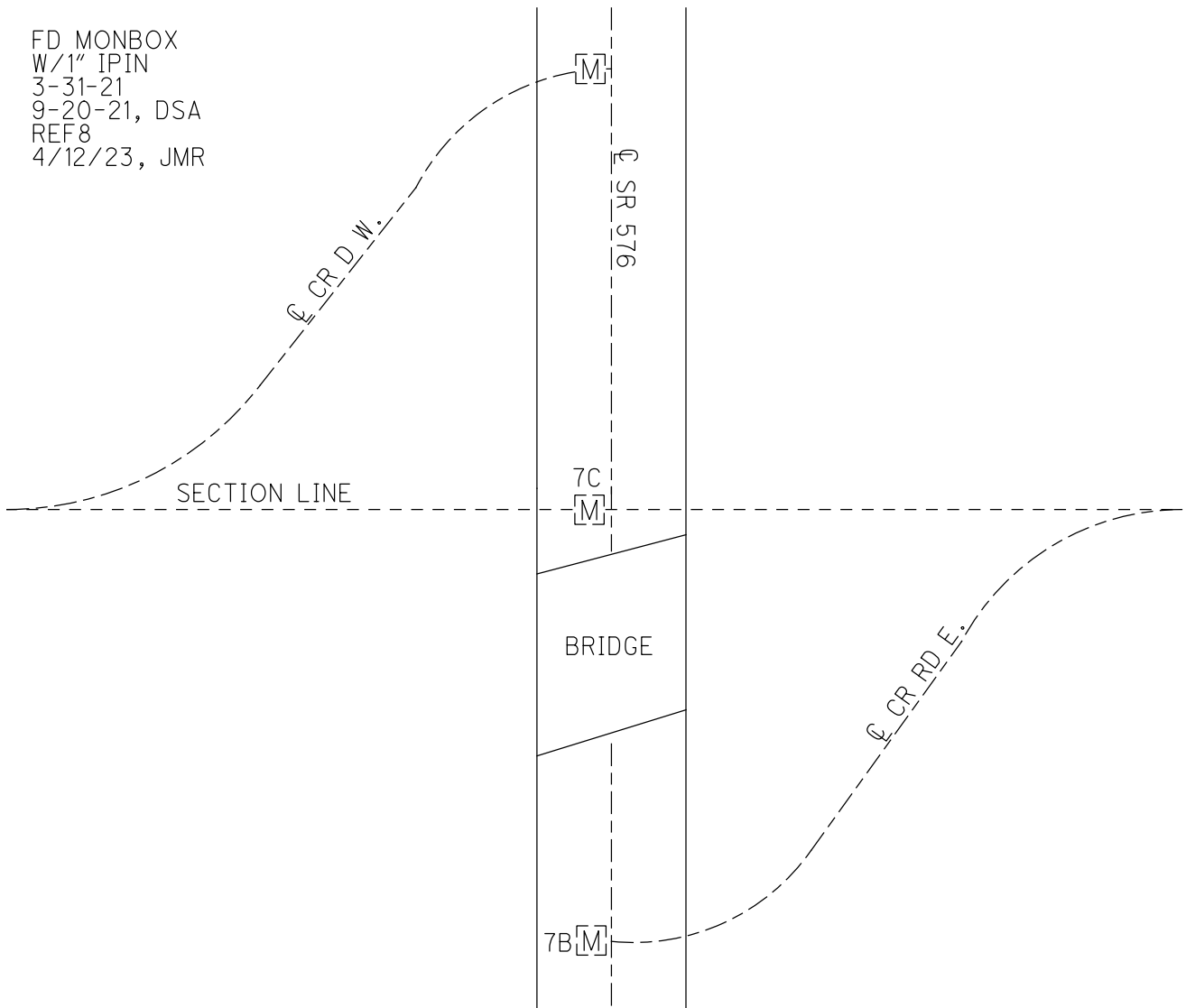
GEOID: NAVD88 2018

GRID: NORTHING: 664360.709

EASTING: 1389479.382



FD MONBOX  
W/1" IPIN  
3-31-21  
9-20-21, DSA  
REF8  
4/12/23, JMR



O.D.O.T. DISTRICT 2 SURVEY OFFICE (USE ONLY)

PERSONNEL

REFERENCE NO. 8

SHEET 3 OF 29

NOTES NIESE  
 H.C. AUBLE  
 R.C. NIESE

DATE 3-31-21  
 WEATHER WINDY  
 TEMP. 39° F

ROUTE SR 576  
 COUNTY WILLIAMS  
 TOWNSHIP CENTER  
 SECTION 14  
 T 6 N R 2 E

DWG BY AUBLE PID PAVETRAIN

TYPE MONUMENT MONBOX W/1" IPIN

ON SURFACE - ~~BELOW~~ ON

OFFSET Q PAVEMENT 7.6' LT : ~~RT~~  
- TO - EDGE PAVEMENT

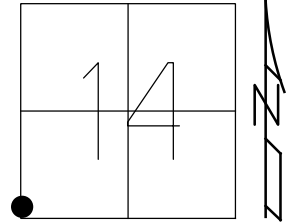
STATION: 160+80.01

HORZ.DATUM: NAD83 (2011)

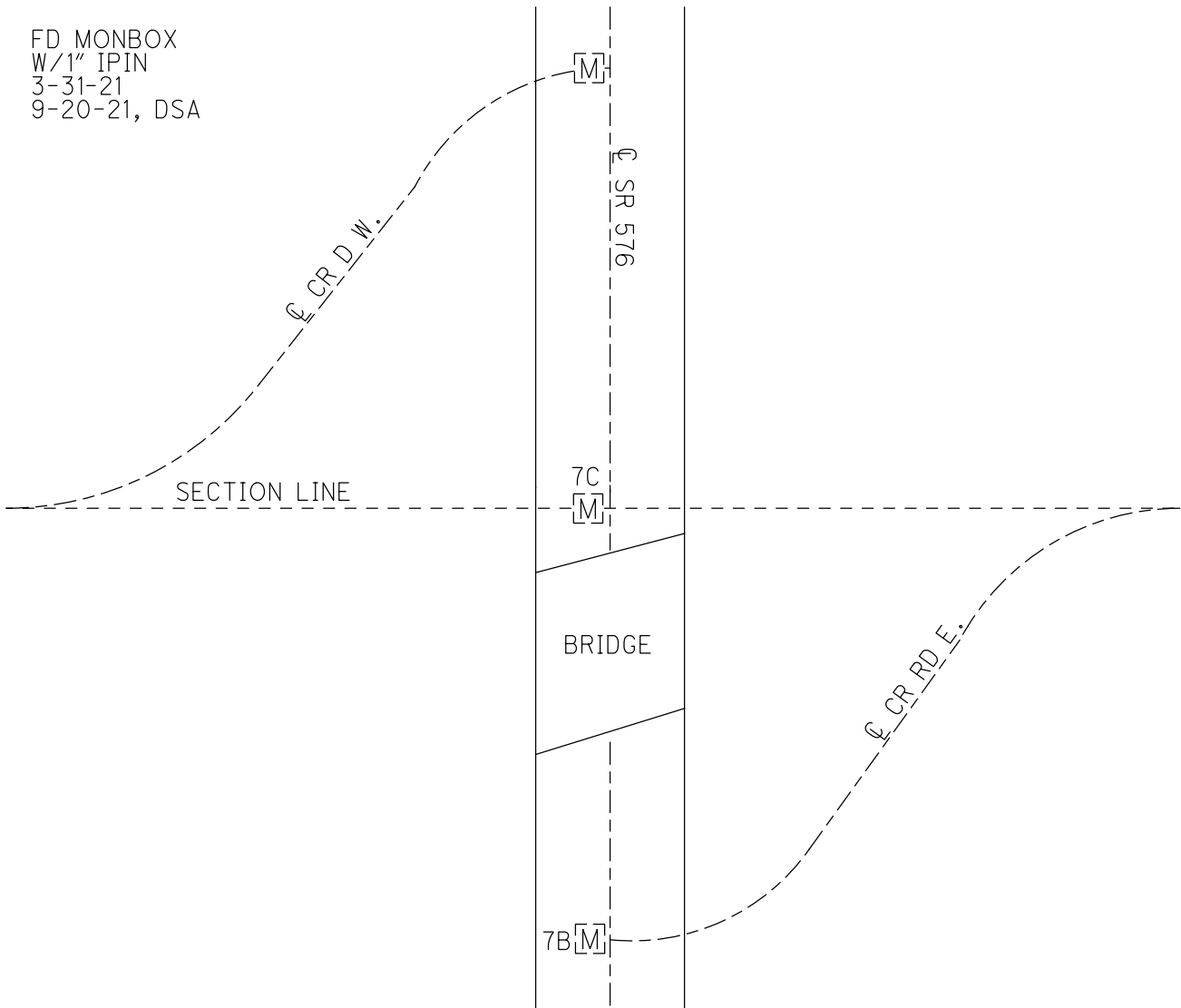
GEOID: NAVD88 2018

GRID: NORTHING: 664360.883

EASTING: 1389479.090



FD MONBOX  
 W/1" IPIN  
 3-31-21  
 9-20-21, DSA



# O.D.O.T. DISTRICT 2 SURVEY OFFICE

PERSONNEL

REFERENCE NO. 8 SHEET 11 OF 16

NOTES VAN DUSEN  
 H.C. CORDS  
 R.C. BARNHISEL  
OTTO

DATE 6-10-93  
 WEATHER CLOUDY  
 TEMP. +60°

ROUTE S.R. # 576  
 COUNTY Williams  
 TOWNSHIP Center  
 SECTION 23  
T6 NR 2 E

TYPE MONUMENT P.K. Nail  
 ON SURFACE - ~~BELOW~~ YES  
 LEFT-~~C~~ PAV'T. - ~~RIGHT~~ 7.6 ON E W. EXTENDED  
18.8 TO RT EDGE PAVEMENT  
 S.L.M. 159+52

15	14
22	23



Reset P.K. & WASHER  
8-24-93  
MIB

3.050

REA 15

Pd Mon Box  
7-29-10

S.R. #576

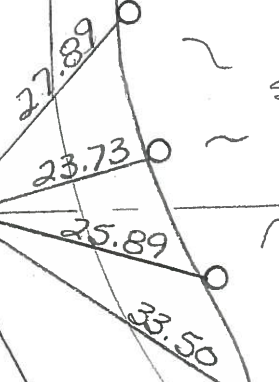
G. RAIL

P.M. BEG  
54586

Set SHINER'S  
IN G. RAIL  
POST  
WIS

Co. Rd. "D"

Set PK nail over  
RR Spk.  
9-6-85



New Bridge

Bridge over R.R.

Repts



# O.D.O.T. DISTRICT 2 SURVEY OFFICE

PERSONNEL

REFERENCE NO. 8

SHEET 11 OF 16

NOTES VAN DUSEN

H.C. CORDES

R.C. BARNHISEL

OTTO

DATE 6-10-93

WEATHER CLOUDY

TEMP. +60°

ROUTE S.R. #576

COUNTY Williams

TOWNSHIP Center

SECTION 23

T6 N R 2 E

TYPE MONUMENT P.K. Nail

ON SURFACE - ~~BELOW~~ yes

LEFT-~~C~~ PAV'T. - ~~RIGHT~~ 7.6 ON ~~E~~ W. EXTENDED

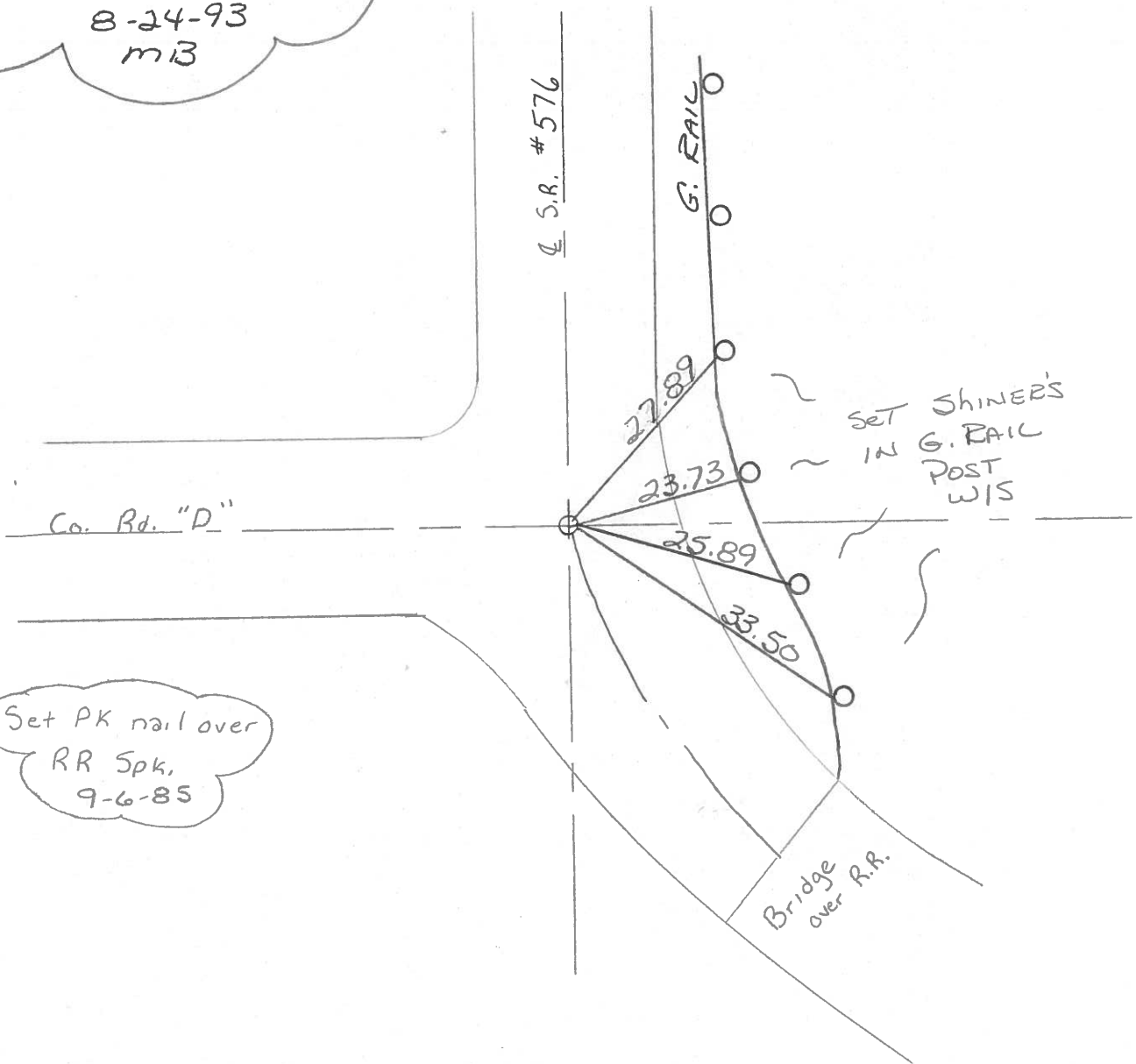
18.8 TO RT EDGE PAVEMENT

S.L.M. 159+52

15	14
22	23



Reset P.K. & WASHER  
8-24-93  
m13



Set PK nail over  
RR Spk,  
9-6-85

# O.D.O.T. DISTRICT 2 SURVEY OFFICE

PERSONNEL \_\_\_\_\_

REFERENCE NO. 8 SHEET 9 OF \_\_\_\_\_

NOTES 1. Stone

H.C. D. Curtis'

R.C. R. Michalak

J. Hausholder

DATE 6 Sept. 85

WEATHER Rain

TEMP. 75°

ROUTE SR #576

COUNTY Williams

TOWNSHIP Center

SECTION 23

T.     R.    

TYPE MONUMENT Set PK Nail 8-20-85

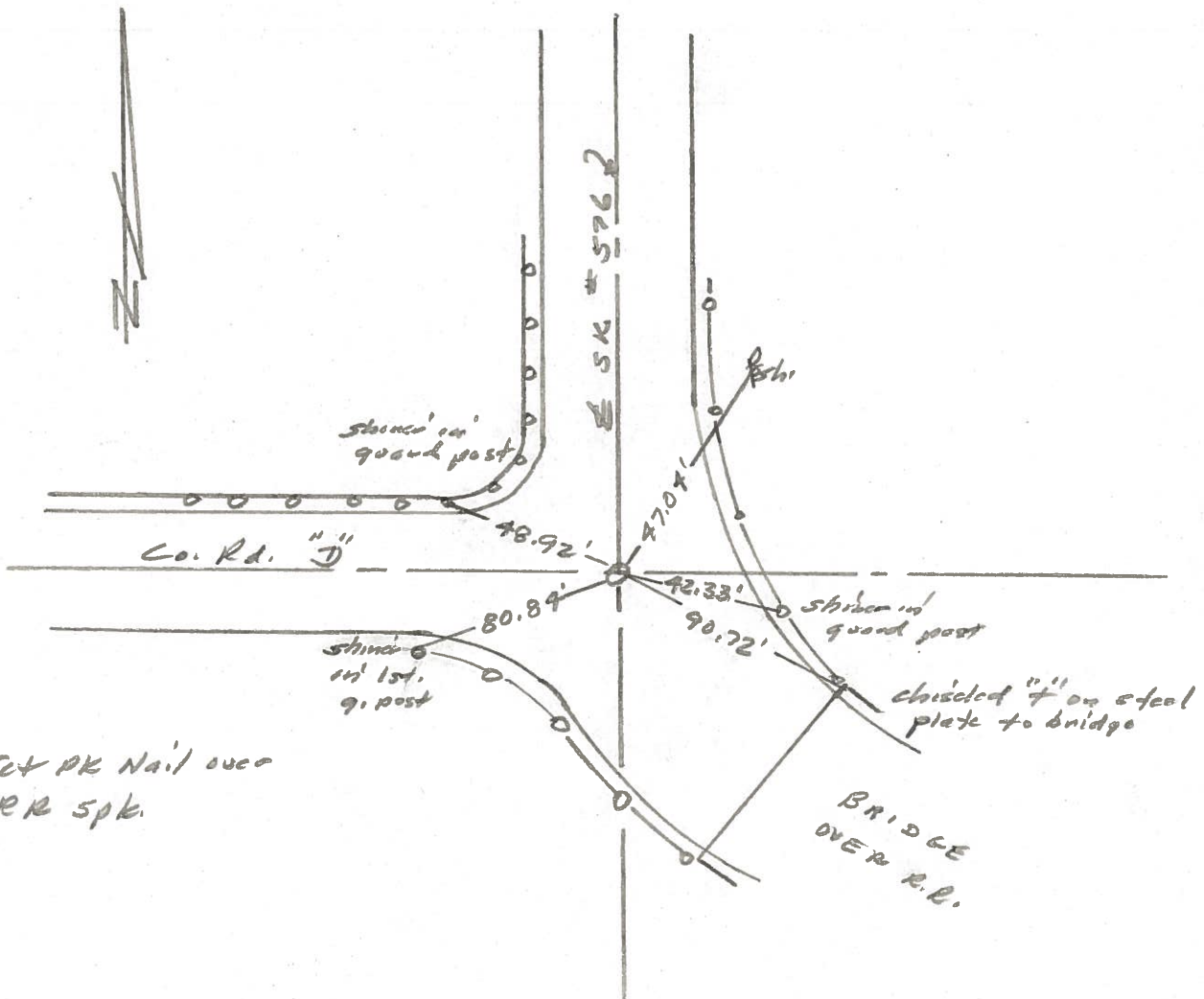
ON SURFACE - BELOW on surf.

LEFT -     PAV'T. - RIGHT    

    TO     EDGE PAVEMENT

S.L.M.    

15	14
22	23



County Williams S.R. 576

Date 18 Aug. 80

Township Center

Weather Cloudy

Section 14-15-22-23

Temp. 76°

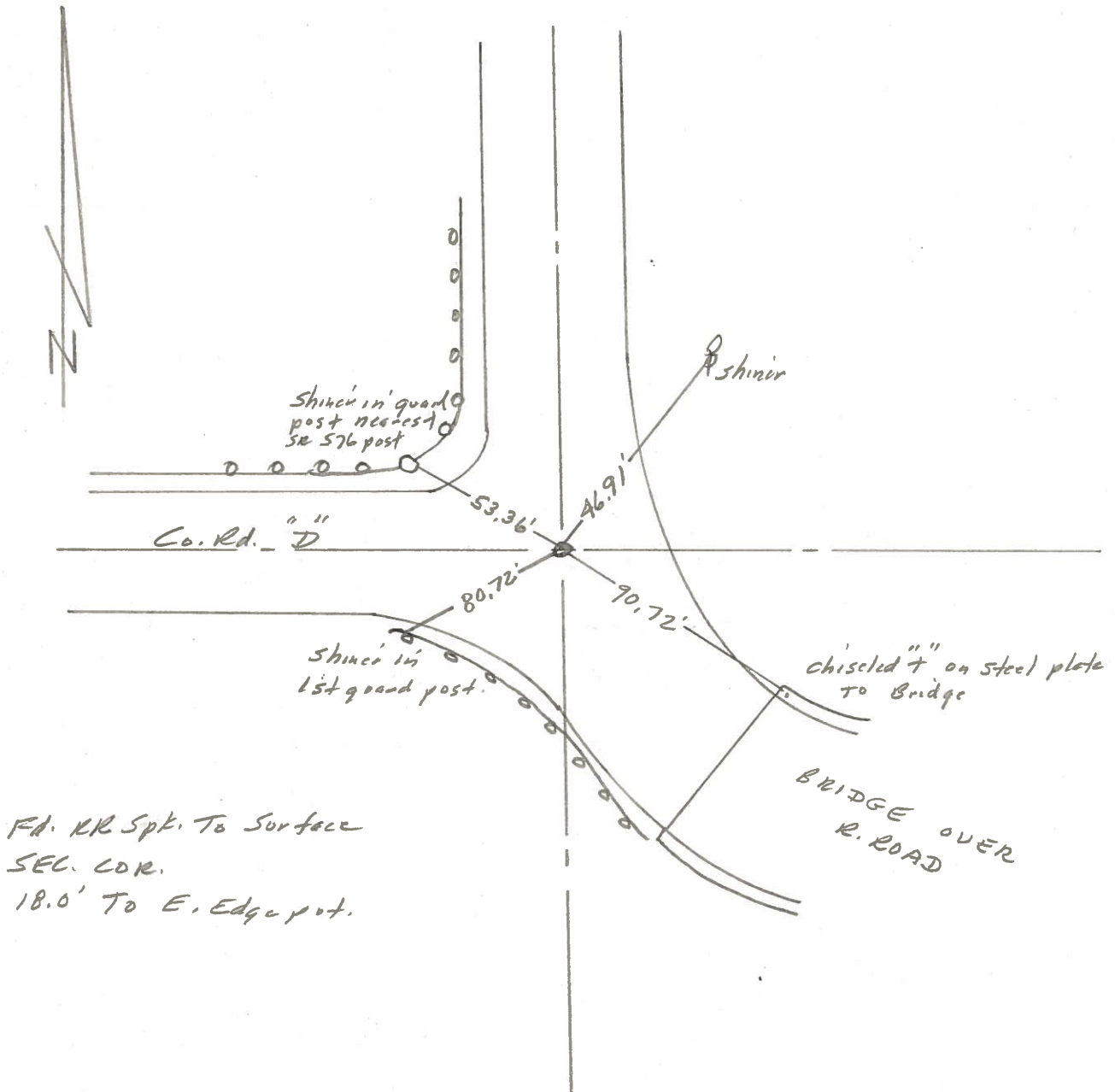
T N, R E

Personnel I. Stone

15	14
22	23



REF. No. 8



PERSONNEL	TITLE	PERSONNEL	TITLE	COUNTY	DATE		
Louys				Wi.	4-7-50		
Hoover				S. R. 576	WEATHER Fair		
Beach				SEC Defiance Co. Line to R.R. 34	TEMP 50°		
DESCRIPTION Witnesses to Control Points				LEFT	CENTER LINE	RIGHT	JOB NO.

