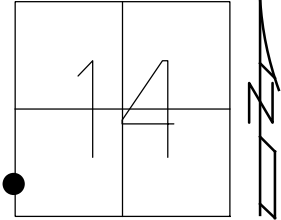


O.D.O.T. DISTRICT 2 SURVEY OFFICE (USE ONLY)

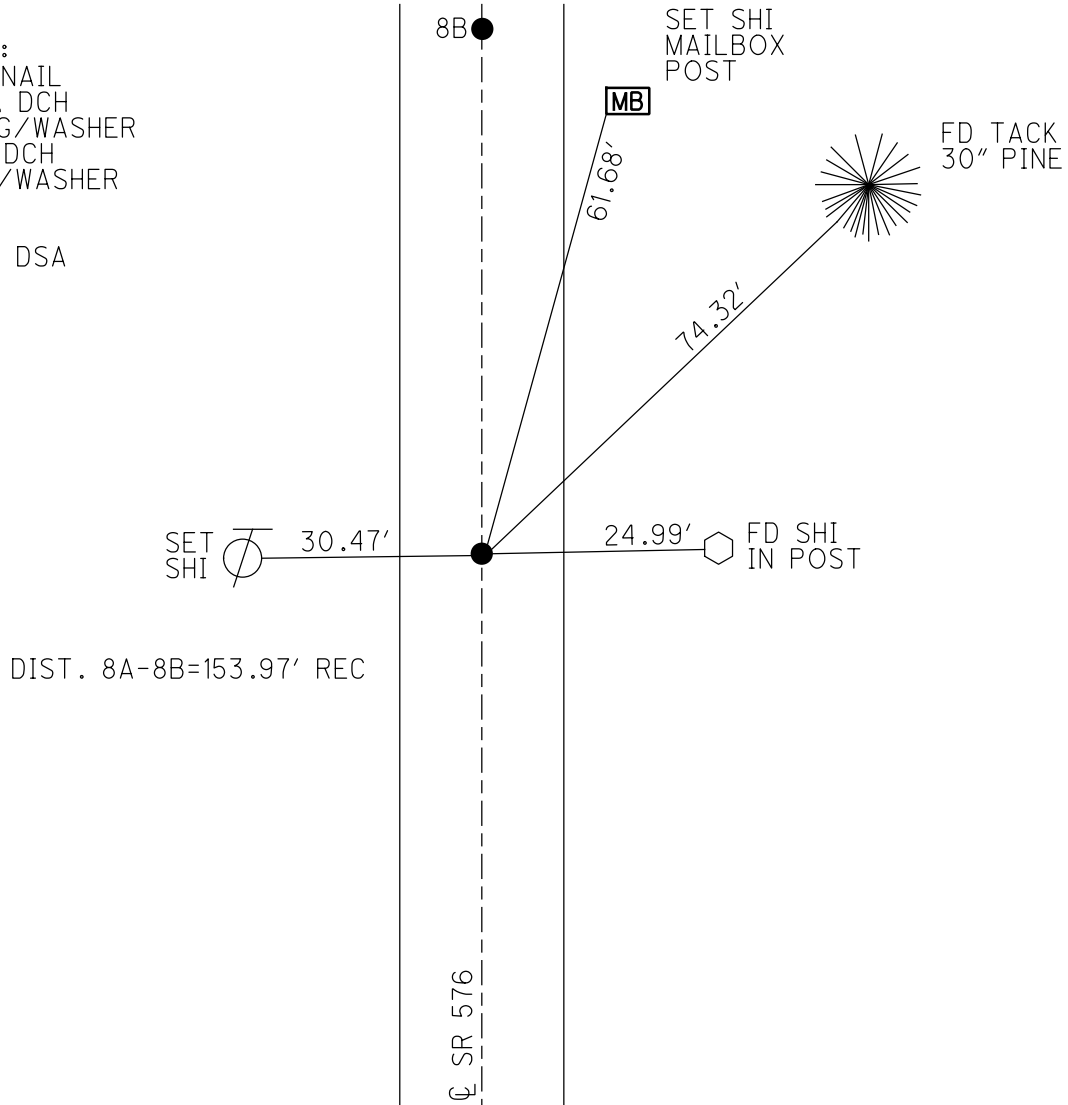
PERSONNEL \_\_\_\_\_ REFERENCE NO. 8 A SHEET 4 OF 29  
 NOTES RHOADES DATE 7-1-20 ROUTE SR 576  
 H.C. AUBLE WEATHER SUNNY COUNTY WILLIAMS  
 R.C. RHOADES TEMP. 73°F TOWNSHIP CENTER  
 DWG BY MAHLER PID PAVETRAIN SECTION 14  
 T 6 N R 2 E

TYPE MONUMENT MAG/WASHER  
 ON SURFACE - ~~BELOW~~ ON  
 OFFSET 9.3' TO LT EDGE PAVEMENT  
 STATION: 172+19.98



HORIZ.DATUM: NAD83 2011 GEOID: NAVD88 2018  
 GRID: NORTHING: 665500.581 EASTING: 1389501.405

RECORD:  
 FD P.K.NAIL  
 6/14/11, DCH  
 SET MAG/WASHER  
 8-11-11, DCH  
 FD MAG/WASHER  
 REFA8  
 7-1-20  
 9-20-21 DSA



O.D.O.T. DISTRICT 2 SURVEY OFFICE USE ONLY

PERSONNEL \_\_\_\_\_

REFERENCE NO. 8-A

SHEET 2 OF 27

NOTES HOMAN

DATE 6-14-11

ROUTE SR 576

H.C. HOMAN

WEATHER SUNNY

COUNTY WILLIAMS

R.C. ROUSOS

TEMP. 65°

TOWNSHIP CENTER

SECTION 14

T 6 N R 2 E

TYPE MONUMENT PK NAIL

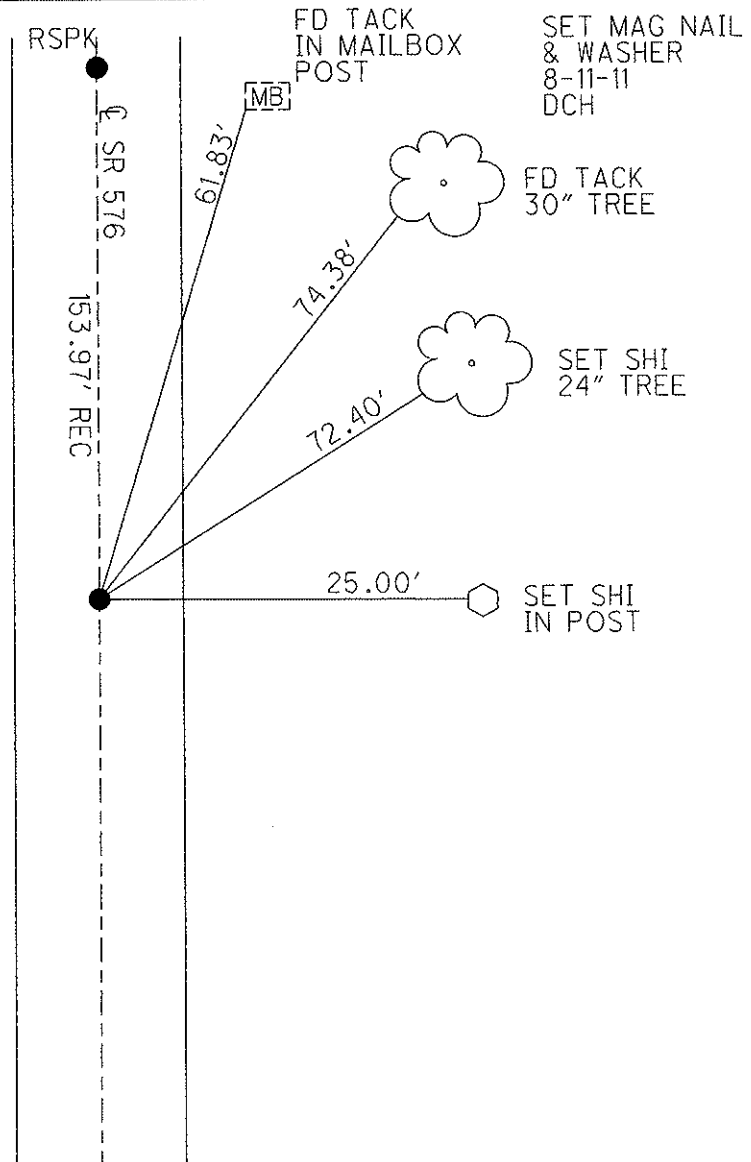
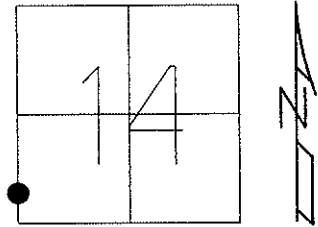
ON SURFACE ~~BELOW~~ ON

LEFT - ~~C PAVT~~ RIGHT 1.7' LT

9.3 TO LT EDGE PAVEMENT

S.L.M. 172+20

Grid: Northing: 665500.667 Easting: 1389501.435



O.D.O.T. DISTRICT 2 SURVEY OFFICE

PERSONNEL

REFERENCE NO. 8-A

SHEET 12 OF 16

NOTES VAN DUSEN

H.C. CORDS

R.C. BARNHISEL

OTTO

DATE 6-10-93

WEATHER Cloudy

TEMP. +60°

ROUTE S.R. #576

COUNTY Williams

TOWNSHIP Center

SECTION 14

T6 N R 2 E

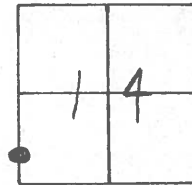
TYPE MONUMENT RR Spk

~~ON SURFACE~~ - BELOW 1 1/2"

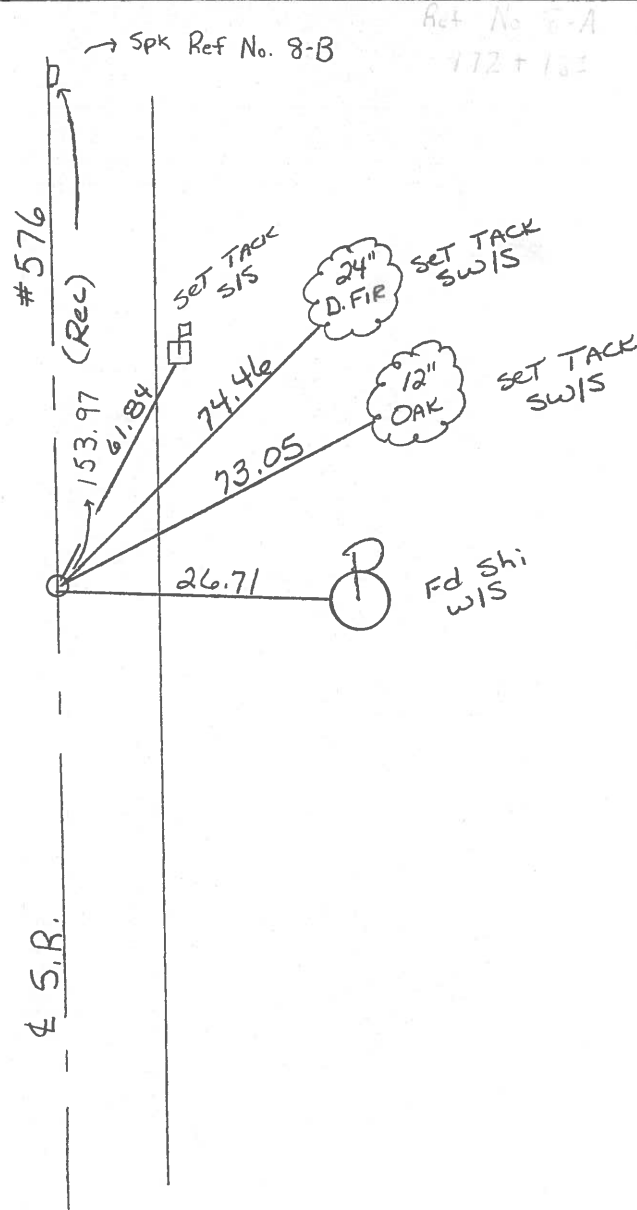
LEFT- ~~C~~ PAV'T. - ~~RIGHT~~ 1.7

9.3 TO LT EDGE PAVEMENT

S.L.M. 172 + 84



Reset P.K. & WASHER  
8-24-93  
mB



Act No 8-A  
172 + 103

Fd. RR Spk.  
3" deep 8-20-85

O.D.O.T. DISTRICT 2 SURVEY OFFICE

SHEET 9-A OF

County Williams S.R. 576

Date 16 April 85

Township Center

Weather Sunny

Section 14

Temp. 62°

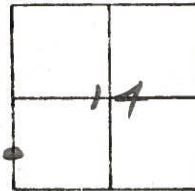
T N, R E

Personnel I. Stone

R. Michalak

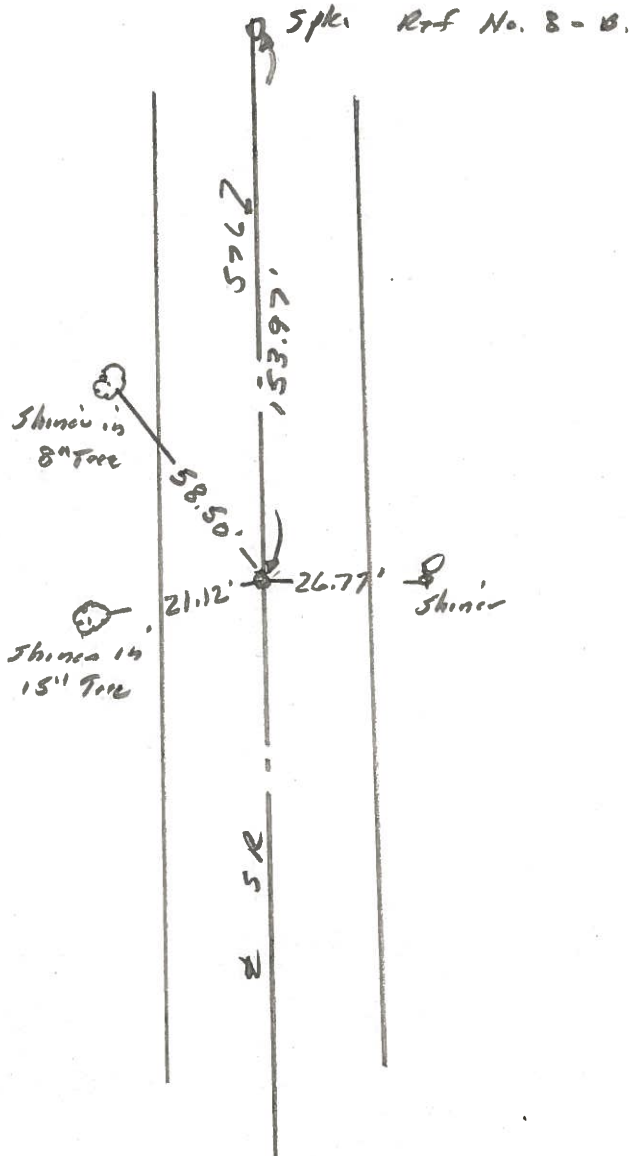
D. Curtis

J. Haushalter



REF. NO. 8-A

172+18 ±



Fd. RR spt.  
3" deep 8-20-85