

O.D.O.T. DISTRICT 2 SURVEY OFFICE (USE ONLY)

PERSONNEL

REFERENCE NO. 8 B

SHEET 5 OF 29

NOTES RHOADES

DATE 7-1-20

ROUTE SR 576

H.C. AUBLE

WEATHER SUNNY

COUNTY WILLIAMS

R.C. RHOADES

TEMP. 73°F

TOWNSHIP CENTER

SECTION 14

DWG BY MAHLER

PID PAVETRAIN

T 6 N R 2 E

TYPE MONUMENT MAG/WASHER

ON SURFACE - ~~BELOW~~ ON

OFFSET 0 PAVEMENT 1.0' LT : RT

9.8' TO LT EDGE PAVEMENT

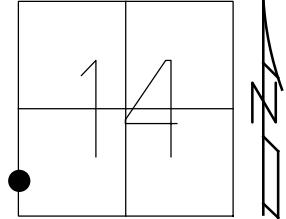
STATION: 172+73.99

HORZ.DATUM: NAD83 2011

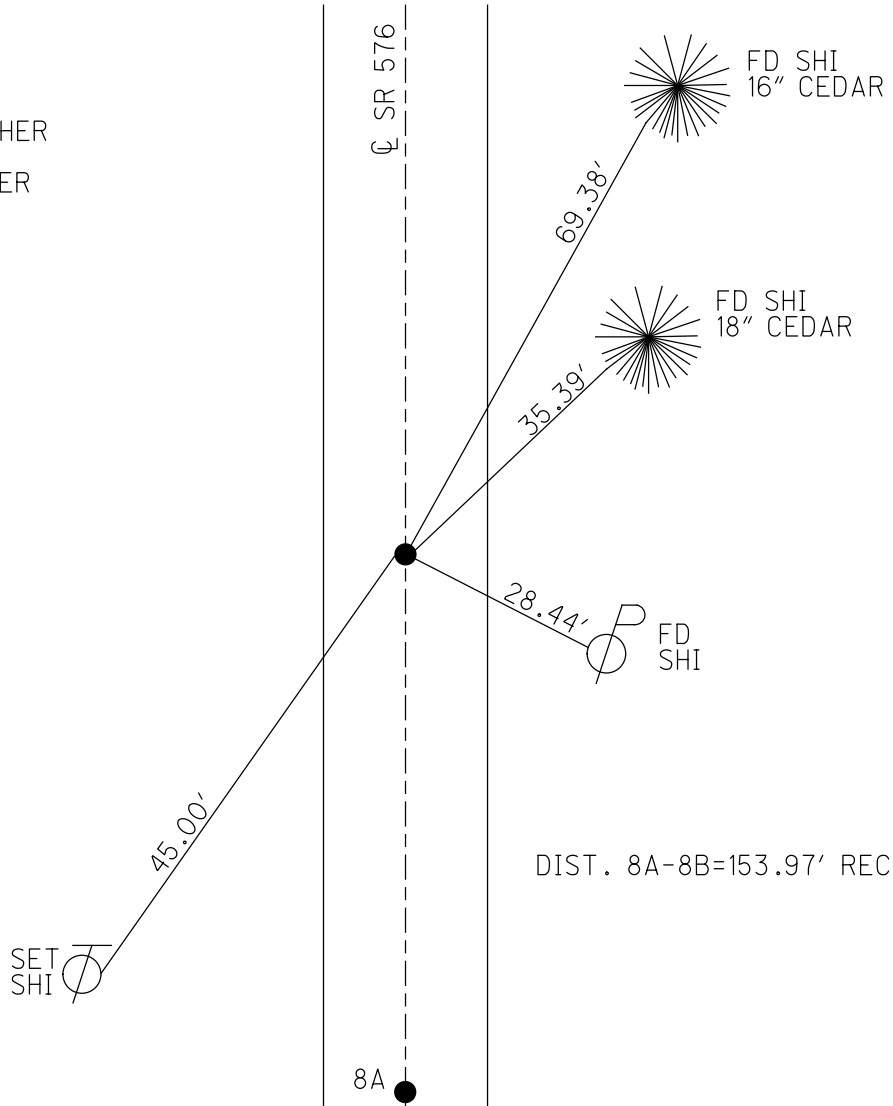
GEOID: NAVD88 2018

GRID: NORTHING: 665654.533

EASTING: 1389504.135



RECORD:  
 FD R.R.SPIKE  
 6/14/11, DCH  
 SET MAG/WASHER  
 8-11-11, DCH  
 FD MAG/WASHER  
 REFB8  
 7-1-20  
 9-20-21, DSA



O.D.O.T. DISTRICT 2 SURVEY OFFICE USE ONLY

PERSONNEL

REFERENCE NO. 8 B

SHEET 3 OF 27

NOTES HOMAN

DATE 6-14-11

ROUTE S.R. 576

H.C. HOMAN

WEATHER SUNNY

COUNTY WILLIAMS

R.C. ROUSOS

TEMP. 65°

TOWNSHIP CENTER

SECTION 14

T 6 N R 2 E

TYPE MONUMENT RR SPIKE

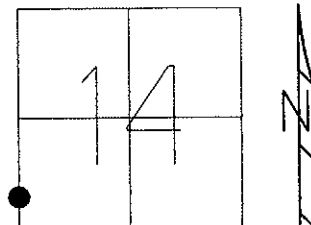
ON SURFACE ~~BELOW~~ ON

LEFT - ~~C PAVT~~ RIGHT 1.0' LT

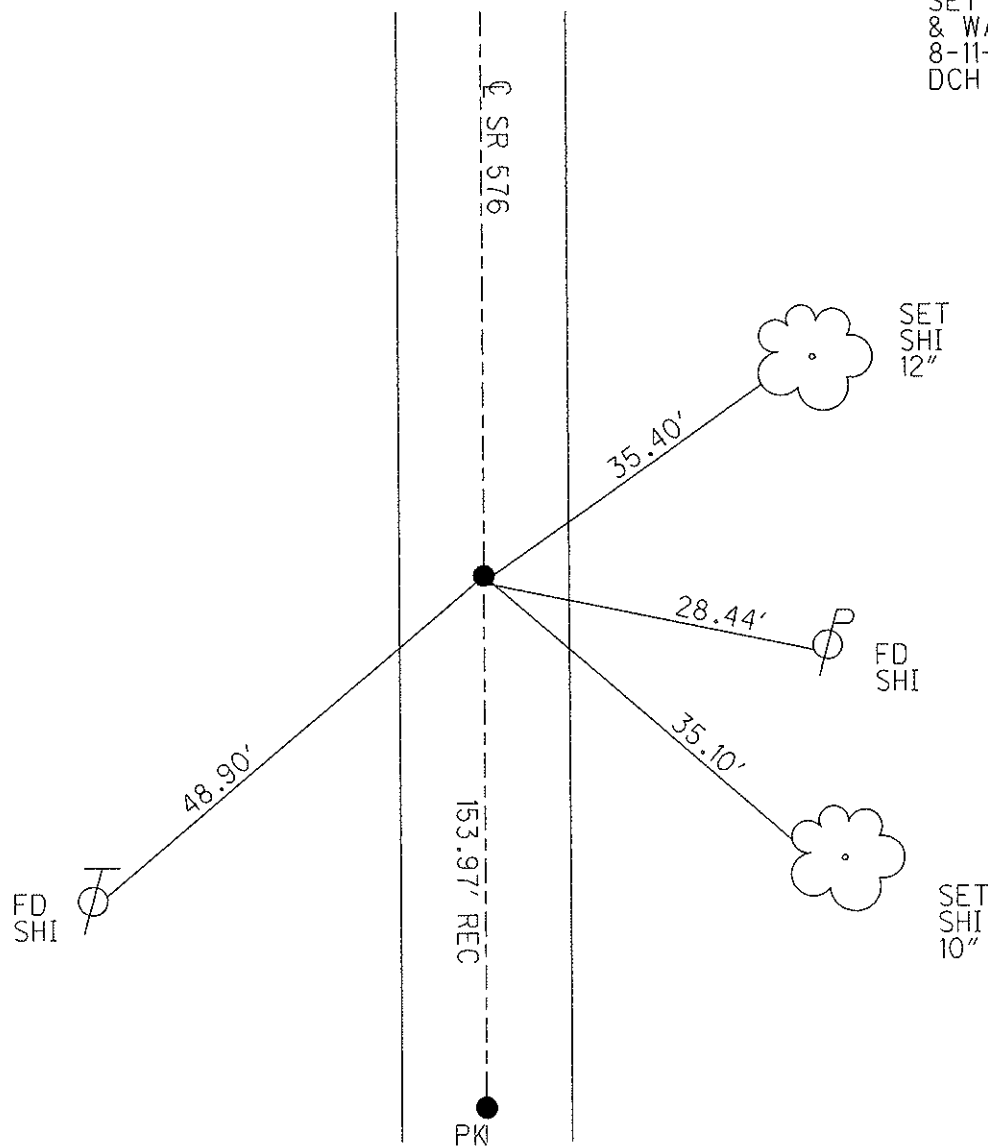
9.8 TO LT EDGE PAVEMENT

S.L.M. 173+74

Grid: Northing: 665654.616 Easting: 1389504.117



SET MAG NAIL  
& WASHER  
8-11-11  
DCH



# O.D.O.T. DISTRICT 2 SURVEY OFFICE

PERSONNEL

REFERENCE NO. 8-A

SHEET 13 OF 16

NOTES VAN DUSEN

H.C. CORDES

DATE 6-10-93

ROUTE S.R. #576

R.C. BARNHISEL

WEATHER Cloudy

COUNTY Williams

OTTO

TEMP. +60°

TOWNSHIP Center

SECTION 14

T6 NR 2 E

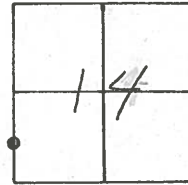
TYPE MONUMENT RR Spk

ON SURFACE - ~~BELOW~~ yes

LEFT-~~☉~~ PAV'T. - ~~RIGHT~~ 1.0

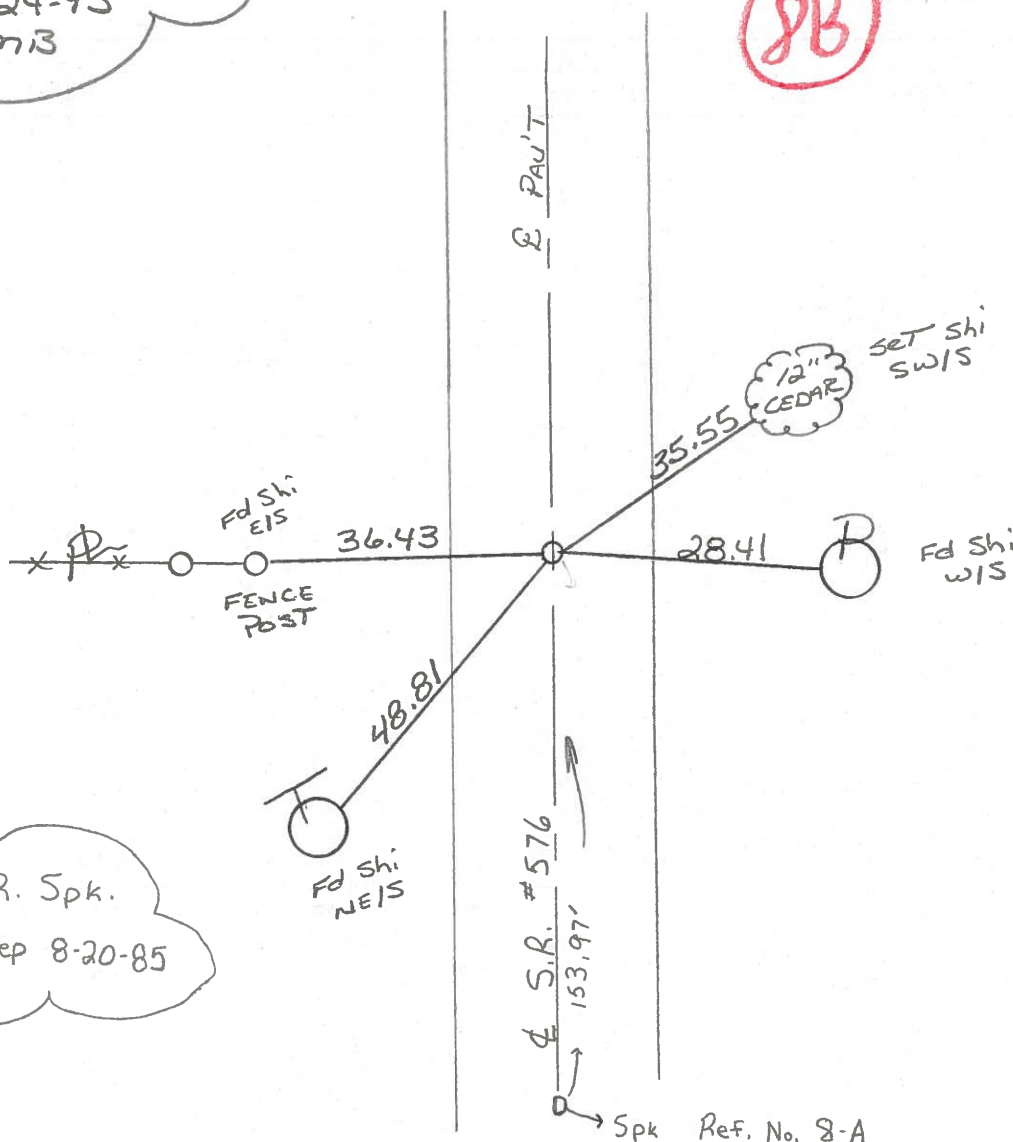
9.8 TO LT EDGE PAVEMENT

S.L.M. 174+38



Reset P.K. & WASHER  
8-24-93  
m13

8B



Fd RR. Spk.  
3" deep 8-20-85

♀ S.R. #576  
153.97'  
Spk Ref. No. 8-A

O.D.O.T. DISTRICT 2 SURVEY OFFICE

SHEET 9-B OF

County Williams S.R. 576

Date 16 April 85

Township Con 410

Weather Sunny

Section 17

Temp. 62°

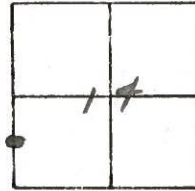
T N, R E

Personnel L. Stone

R. Michalak

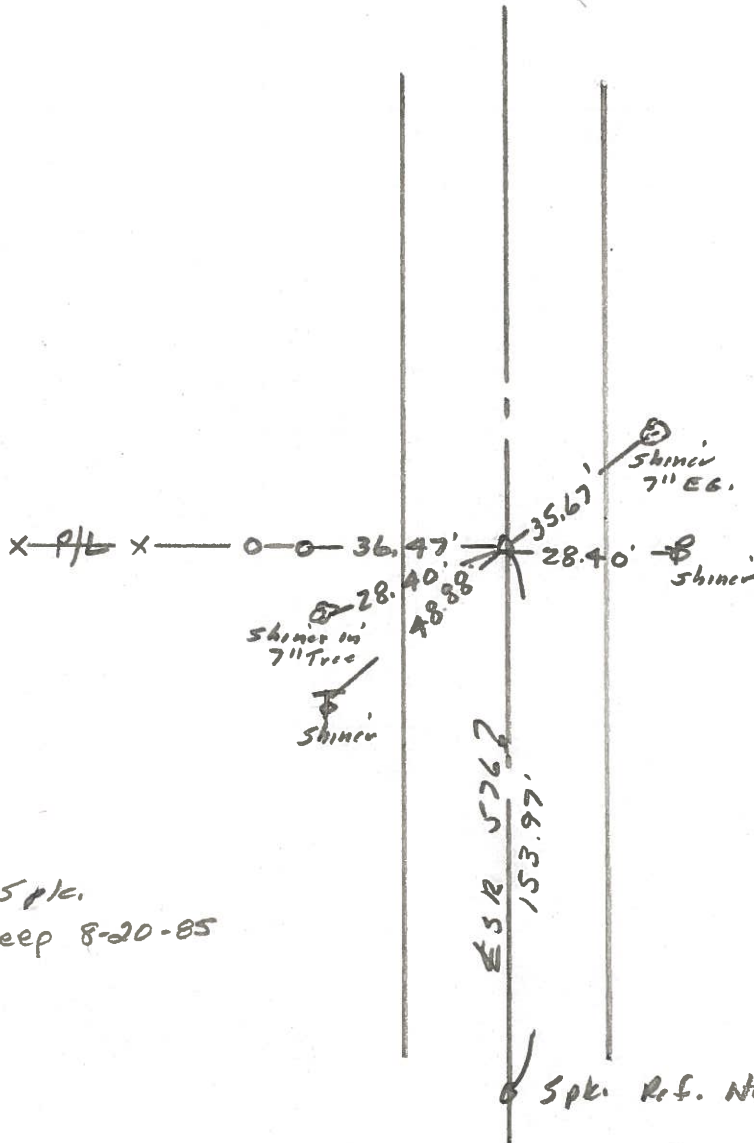
D. Curtis

J. Haushalter



REF. NO. 8-B

174+38



Fd. RR. Spk.  
3" deep 8-20-85

Spk. Ref. No. B-A