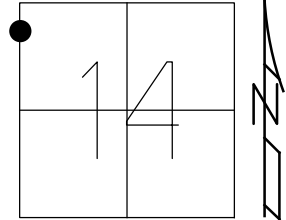


O.D.O.T. DISTRICT 2 SURVEY OFFICE (USE ONLY)

PERSONNEL _____ REFERENCE NO. 9 A SHEET 7 OF 29
 NOTES RHOADES DATE 7-1-20 ROUTE SR 576
 H.C. AUBLE WEATHER SUNNY COUNTY WILLIAMS
 R.C. RHOADES TEMP. 73°F TOWNSHIP CENTER
 DWG BY MAHLER PID PAVETRAIN SECTION 14
 T 6 N R 2 E

TYPE MONUMENT MAG/WASHER
 ON SURFACE - ~~BELOW~~ ON
 OFFSET Q PAVEMENT 0.4' LT : RT
9.9' TO LT EDGE PAVEMENT
 STATION: 204+35.22



HORZ. DATUM: NAD83 2011 GEOID: NAVD88 2018
 GRID: NORTHING: 668715.229 EASTING: 1389562.210

RECORD:
 FD P.K.NAIL
 6/14/11, DCH
 SET MAG/WASHER
 8-11-11, DCH
 FD MAG/WASHER
 REFA9
 7-1-20
 9-20-21, DSA

SET SHI
 24" ASH



50.60' REC

Q SR 576

USE BOTTOM OF
 #1 ON ADDRESS
 IN ROCK



44.13'

ASPHALT
 DRIVE



FD SHI
 (UPPER)

30.01'

36.36'

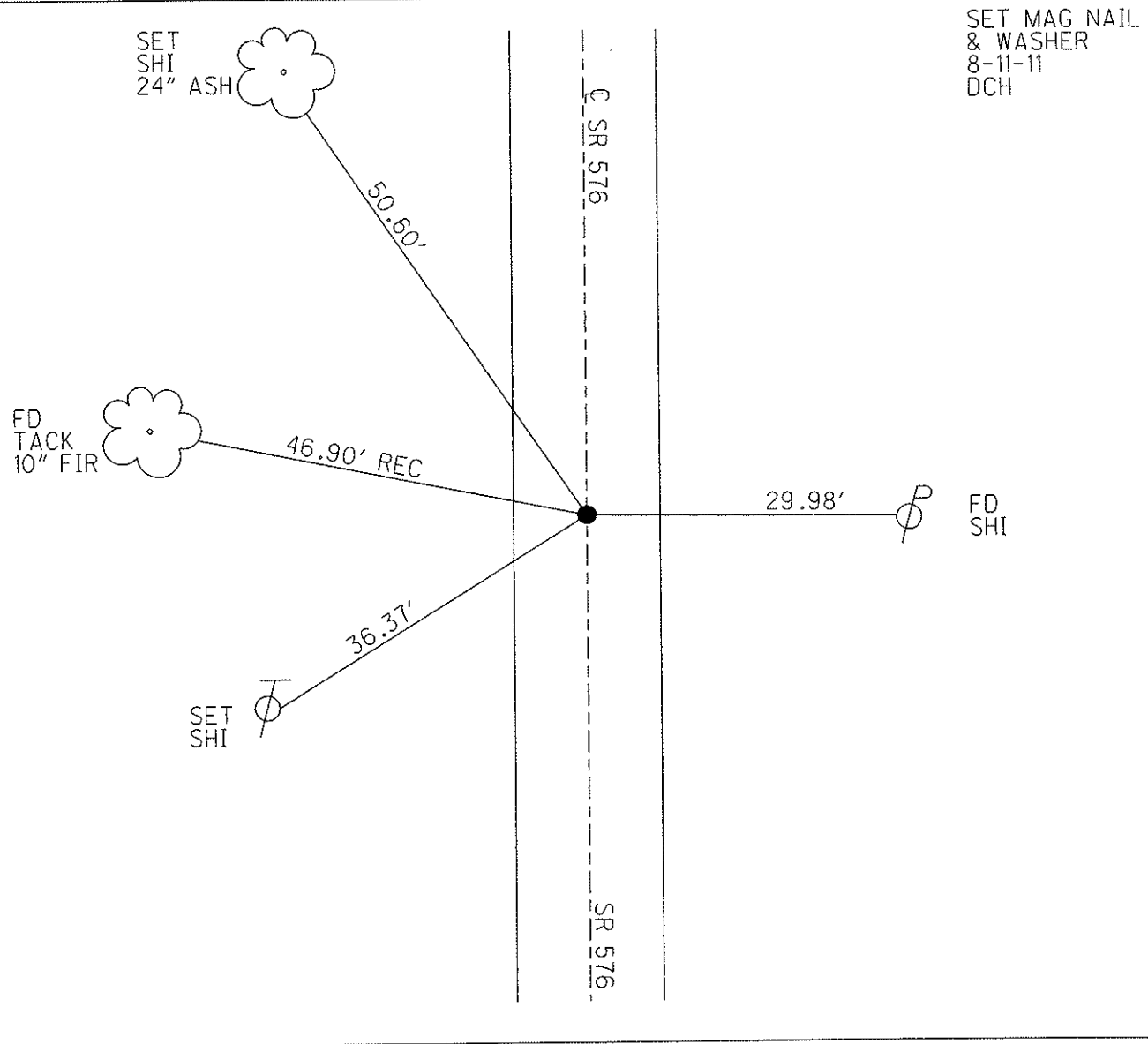
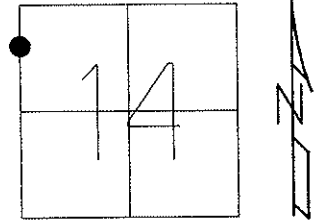
SET
 SHI



O.D.O.T. DISTRICT 2 SURVEY OFFICE USE ONLY

PERSONNEL _____ REFERENCE NO. 9-A SHEET 5 OF 27
 NOTES HOMAN DATE 6-14-11 ROUTE S.R. 576
 H.C. HOMAN WEATHER SUNNY COUNTY WILLIAMS
 R.C. ROUSOS TEMP. 65° TOWNSHIP CENTER
 SECTION 14
 T 6 N R 2 E

TYPE MONUMENT _____ PK NAIL _____
 ON SURFACE - ~~BELOW~~ ON _____
 LEFT - ~~C PAVT~~ - RIGHT 0.4' LT _____
9.9 TO LT EDGE PAVEMENT _____
 S.L.M. 204+35 _____
 Grid: Northing: 668715.300 Easting: 1389562.161



O.D.O.T. DISTRICT 2 SURVEY OFFICE

PERSONNEL

REFERENCE NO. 9-A

SHEET 15 OF 16

NOTES VAN DUSEN

H.C. CORDES

R.C. BARNHISEL

OTTO

DATE 6-10-93

WEATHER Cloudy

TEMP. +60°

ROUTE S.R #576

COUNTY Williams

TOWNSHIP Center

SECTION 14

T6 N R 2 E

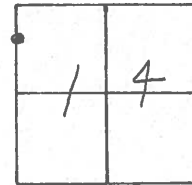
TYPE MONUMENT Pk Nail

ON SURFACE - ~~BELOW~~ yes

LEFT-~~PAV'T.~~ PAV'T. .4'

9.9 TO LT EDGE PAVEMENT

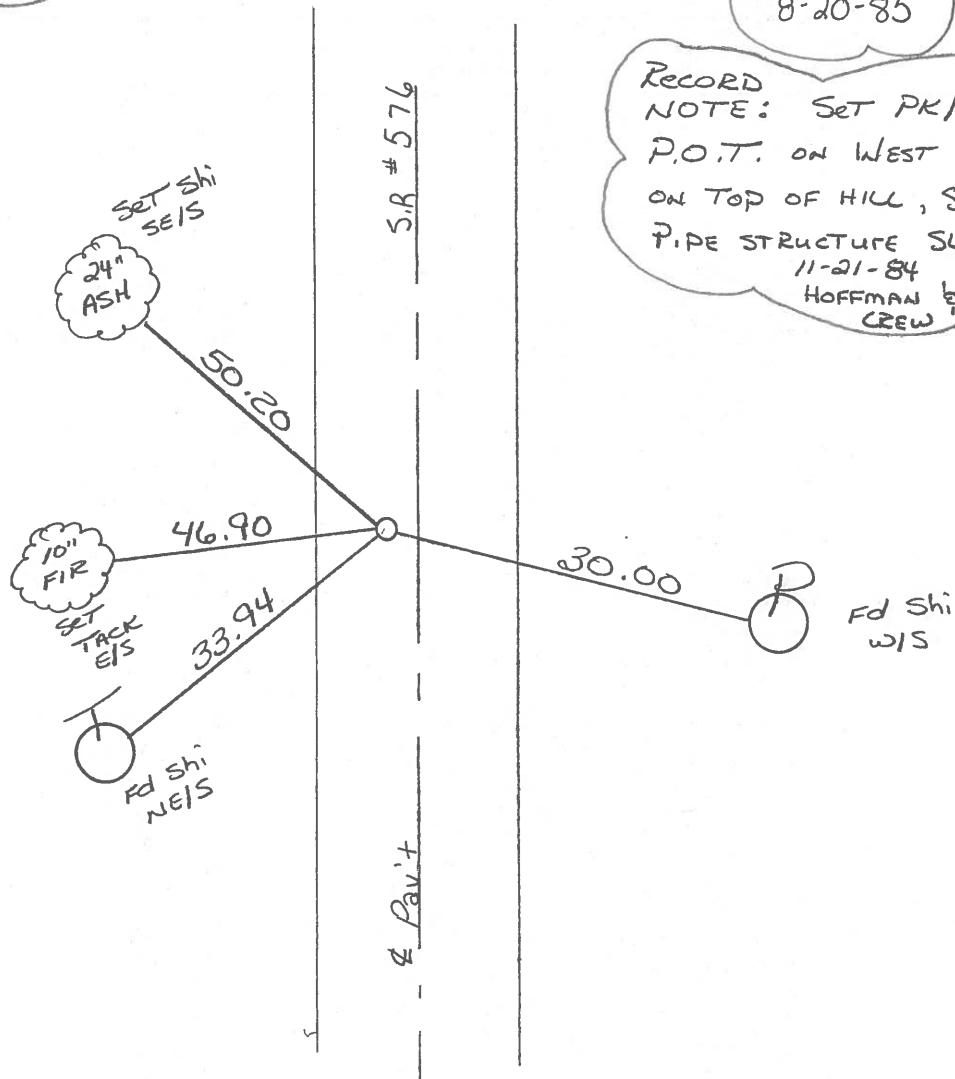
S.L.M. 205+01



Reset P.K. & WASHER
8-24-93
mib

Set Pk Nail
8-20-85

RECORD
NOTE: Set PK/WASHER
P.O.T. ON WEST SEC. LINE,
ON TOP OF HILL, SOUTH OF
PIPE STRUCTURE SLM 3.94
11-21-84
HOFFMAN &
CREW



County Williams S.R. 576

Township CENTER

Section 14

T N, R E

Personnel Hoffman

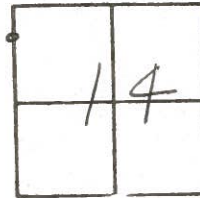
LOEHKE H.C.

BARNHISEL R.C.

Date Nov 21, 1984

Weather P.CLEAR

Temp. 35°



Set P.K./washer - P.O.T. ON WEST sec. line - @ TOP of Hill SOUTH OF PIPE STRUCTURE, S.L.M. 3.94

SLM 204+97 ±

0.9' Lt of E Post

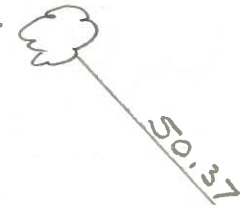
8.1' to Lt. EP

9.8' to RT. EP

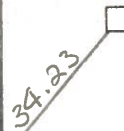
9A
SET PK NAIL
8-20-85
I. STONE

Set Shi SE/S

18" mada

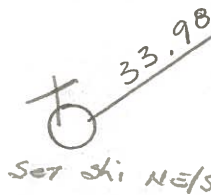


SR 576



Set Shi SW/S MAIL BOX POST
L#202

30.00



Set Shi NE/S

E Post

County Williams S.R. 576

Township CENTER

Section 14

T N, R E

Personnel Hoffman

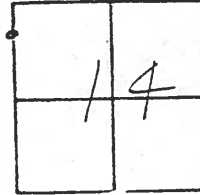
Loehrer H.C.

Barnhisel R.C.

Date Nov 21, 1984

Weather P. CLEAR

Temp. 35°



Set P.K./washer - P.O.T. on west sec. line - @ top of Hill South
of PIPE STRUCTURE, S.L.M. 3.94 567 204+97±

0.9' Lt of E Pawt

8.1' to Lt. EP

9.8' to Rt. EP

Set Shi SE/S

18" m.d.c.



50.37

SR 576

Set P.K. Nail
8-20-85

Set Shi SW/S MAIL BOX POST
L# 202

34.23

30.00

Set Shi W/S

33.98

Set Shi NE/S

E Pawt

