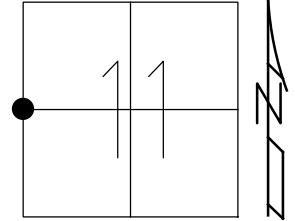


O.D.O.T. DISTRICT 2 SURVEY OFFICE (USE ONLY)

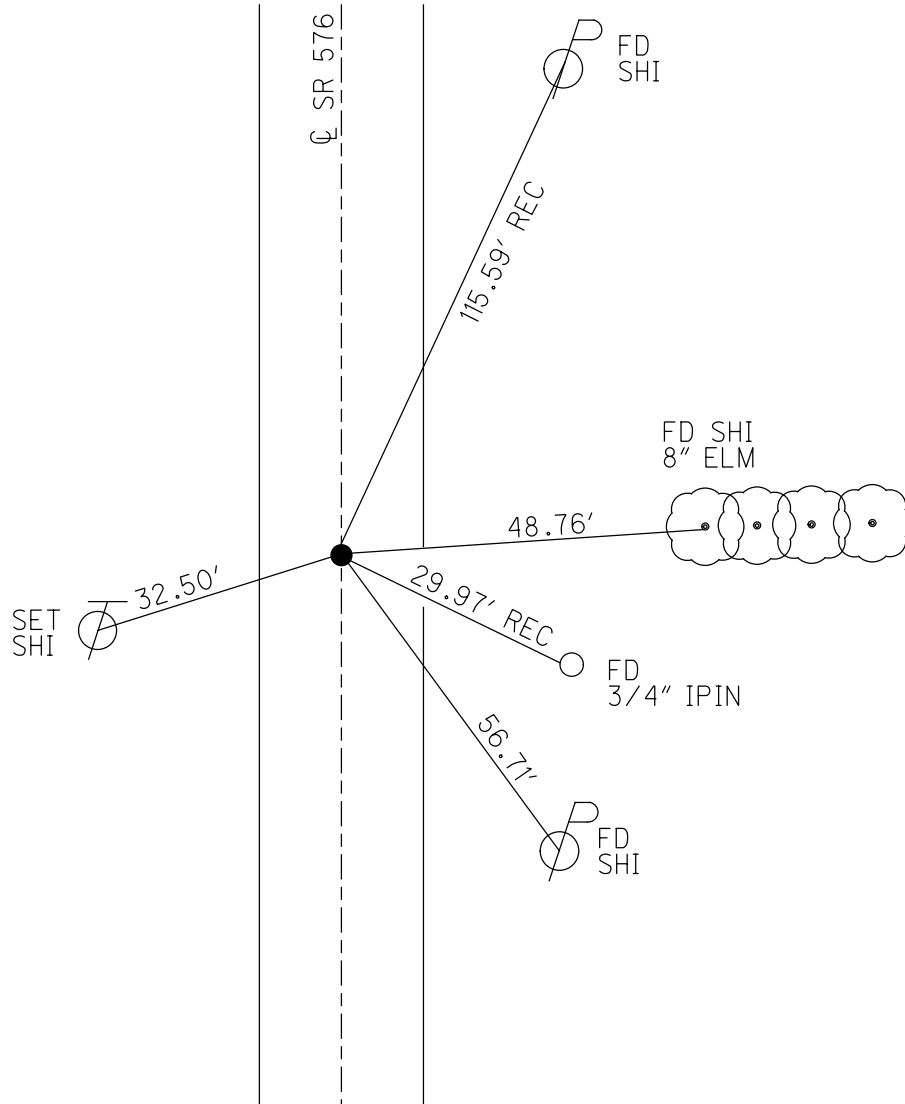
PERSONNEL _____ REFERENCE NO. 11 SHEET 12 OF 29
 NOTES RHOADES DATE 7-1-20 ROUTE SR 576
 H.C. AUBLE WEATHER SUNNY COUNTY WILLIAMS
 R.C. RHOADES TEMP. 81°F TOWNSHIP CENTER
 SECTION 11
 DWG BY MAHLER PID PAVETRAN T 6 N R 2 E

TYPE MONUMENT MAG/WASHER
 ON SURFACE - ~~BELOW~~ ON
 OFFSET Q PAVEMENT 1.15' RT : RT
8.8' TO RT EDGE PAVEMENT
 STATION: 238+68.64



HORIZ.DATUM: NAD83 2011 GEOID: NAVD88 2018
 GRID: NORTHING: 672147.222 EASTING: 1389662.214

RECORD:
 FD P.K./WASHER
 6/14/11, DCH
 SET MAG/WASHER
 8-11-11, DCH
 FD MAG/WASHER
 REF11
 7-1-20
 9-20-21, DSA



O.D.O.T. DISTRICT 2 SURVEY OFFICE USE ONLY

PERSONNEL

REFERENCE NO. 11

SHEET 10 OF 27

NOTES HOMAN

DATE 6-14-11

ROUTE S.R. 576

H.C. HOMAN

WEATHER SUNNY

COUNTY WILLIAMS

R.C. ROUSOS

TEMP. 75 °

TOWNSHIP CENTER

SECTION 11

T 6 N R 2 E

TYPE MONUMENT PK NAIL/WASHER

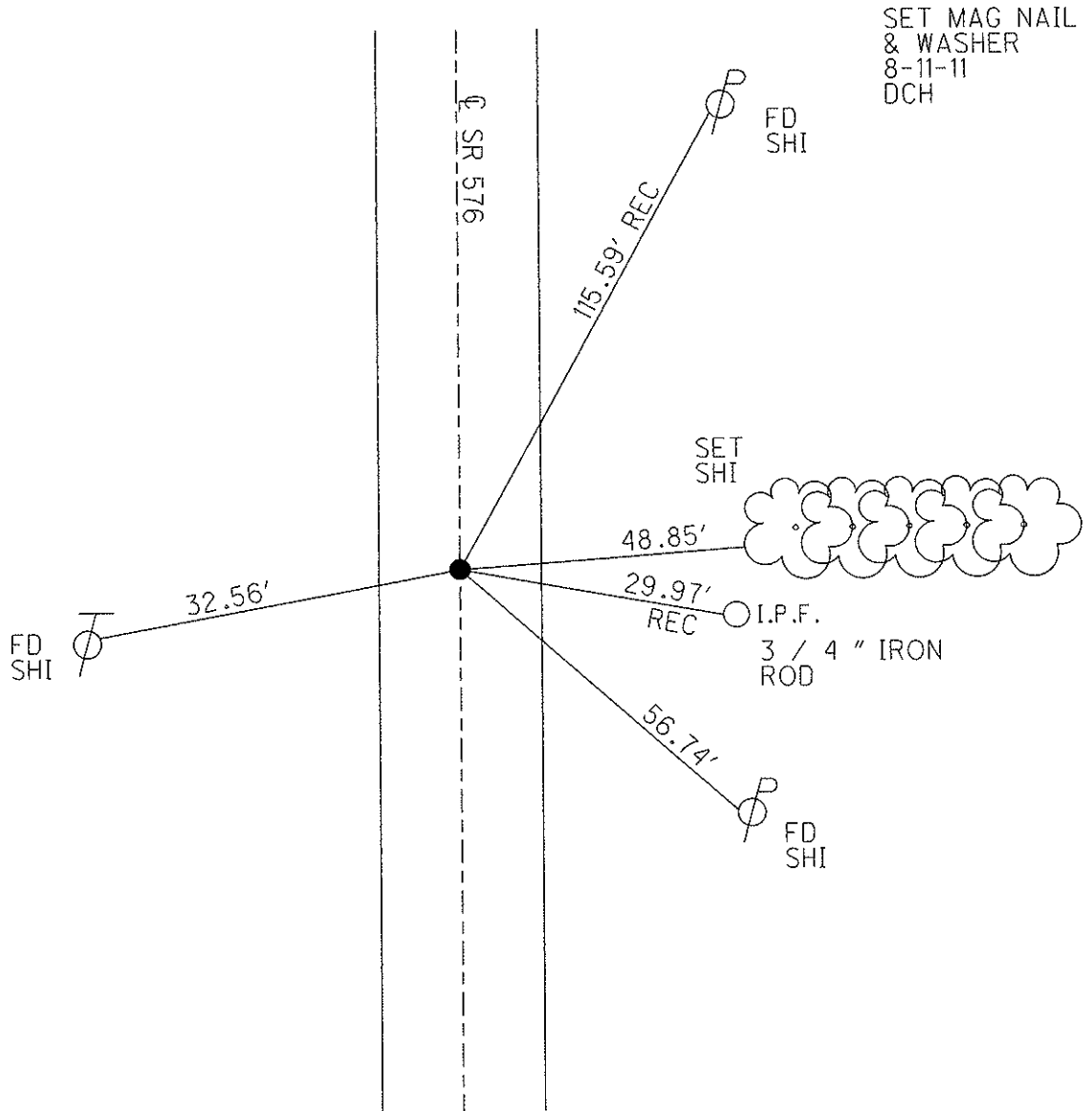
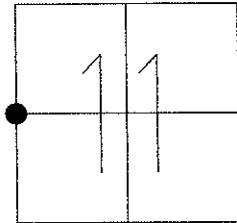
ON SURFACE - ~~BELOW~~ ON

~~LEFT~~ Q PAV'T - RIGHT 1.15' RT

8.8 TO RT EDGE PAVEMENT

S.L.M. 238+69

Grid: Northing: 672147.213 Easting: 1389662.191



O.D.O.T. DISTRICT 2 SURVEY OFFICE

PERSONNEL

REFERENCE NO. 11

SHEET 4 OF 5

NOTES NUHFER

DATE 7-6-06

ROUTE S.R. 576

H.C. MIKLOVIC

WEATHER SUN/WINDY

COUNTY WILLIAMS

R.C. HUSS

TEMP. +70°

TOWNSHIP CENTER

SECTION 11

T 6 N R 2 E

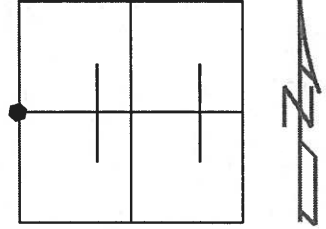
TYPE MONUMENT P.K. NAIL/WASHER

ON SURFACE - ~~BELOW~~ SURFACE

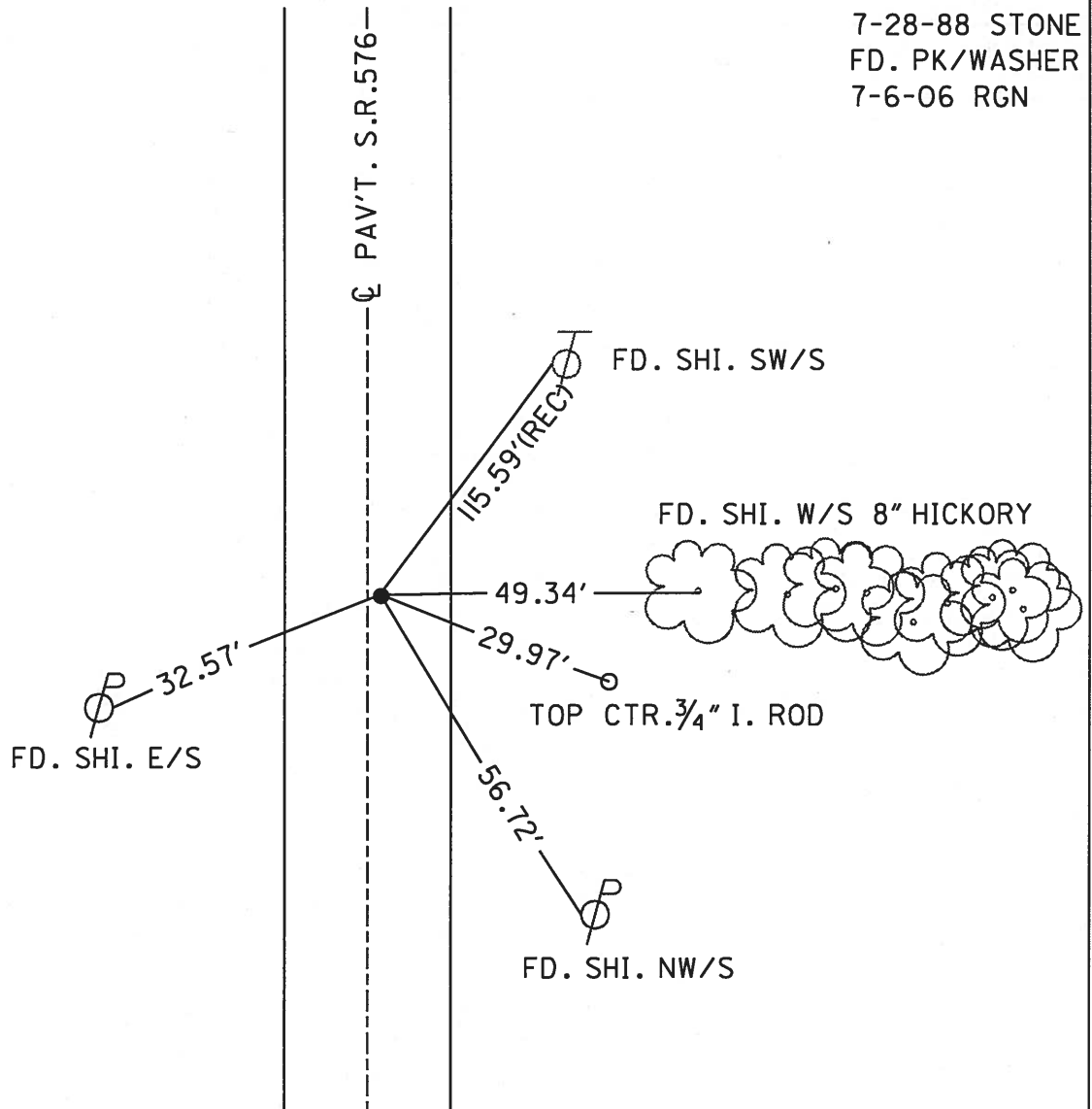
~~LEFT~~ - ℄ PAV'T - RIGHT RT. ℄ 1.15'

8.8 TO RT. EDGE PAVEMENT

S.L.M. 239+53.25



SET PK NAIL
7-28-88 STONE
FD. PK/WASHER
7-6-06 RGN



O.D.O.T. DISTRICT 2 SURVEY OFFICE

PERSONNEL _____

REFERENCE NO. 11

SHEET 1 OF 17

NOTES CANTERBURY

H.C. Rousos

R.C. BARNHISEL

DATE 5/23/97

WEATHER SUN

TEMP. +70°

ROUTE S.R. # 576

COUNTY WILLIAMS

TOWNSHIP CENTER

SECTION 11

T 6 N R 2 E

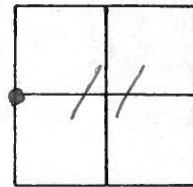
TYPE MONUMENT P.K. NAIL / WASHER

ON SURFACE - ~~BELOW~~ SURFACE

~~LEFT - & PAV'T. - RIGHT~~ 1.0' RT &

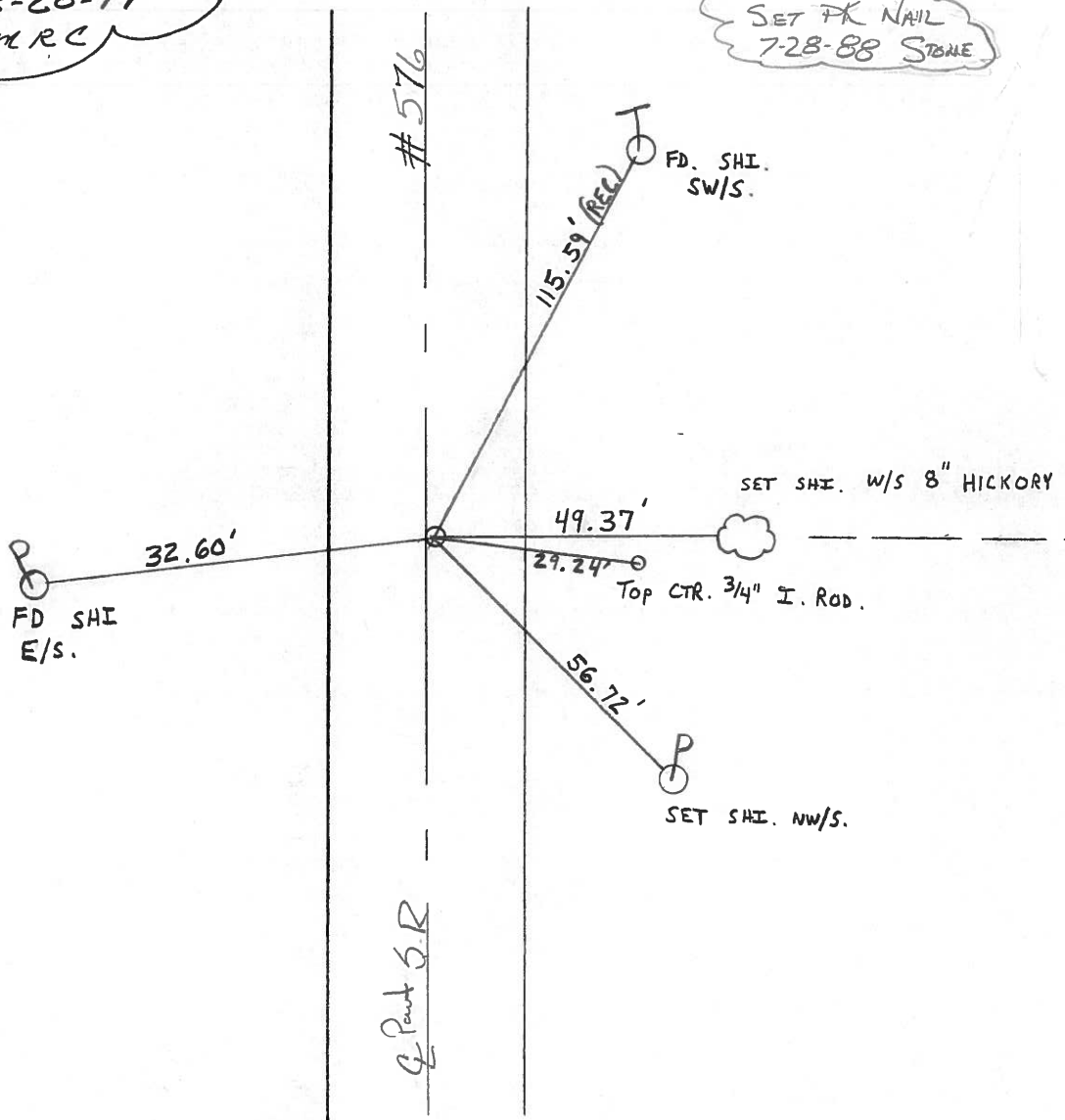
9.3' TO RT EDGE PAVEMENT

S.L.M. 240+81



RESET PK/WASHER
 8-20-97
 MRC

SET PK NAIL
 7-28-88 STONE



Resurfaced 1997

O.D.O.T. DISTRICT 2 SURVEY OFFICE

PERSONNEL REFERENCE NO. 11 SHEET OF

NOTES VAN DUSEN

H.C. MOYER

R.C. BARNHISEL

CORDS

DATE 2-21-95

WEATHER CLOUDY

TEMP. +25°F

ROUTE SR. 576

COUNTY WILLIAMS

TOWNSHIP CENTER

SECTION 11

T6 NR 2 E

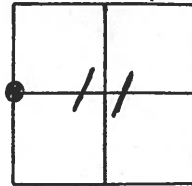
TYPE MONUMENT PK NAIL

ON SURFACE - ~~BELOW~~ YES

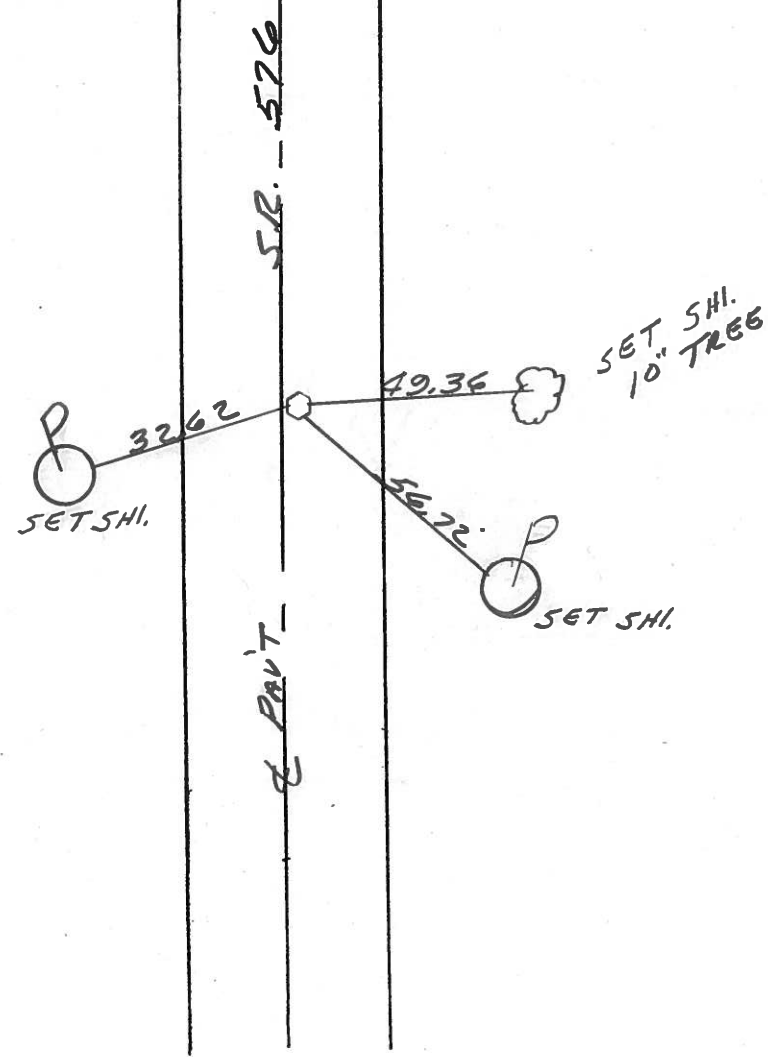
~~LEFT~~ - & PAV'T. - RIGHT 1.0

2.3 TO RT EDGE PAVEMENT

S.L.M. 290+54



W. 1/4 COR. SEC. 11



O.D.O.T. DISTRICT 2 SURVEY OFFICE

PERSONNEL _____

REFERENCE NO. 11

SHEET 2 OF 19

NOTES D. CURTIS

H.C. J. HOUSEHOLDER

DATE 9-29-86

ROUTE 576

R.C. _____

WEATHER WARM

COUNTY WILLIAMS

TEMP. 75°

TOWNSHIP CENTER

SECTION 11

T _____ R _____

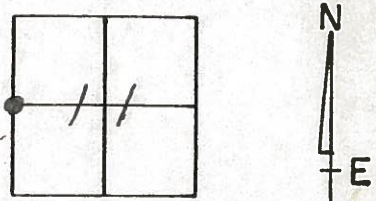
TYPE MONUMENT P.K. / WASHER

ON SURFACE - BELOW SURFACE

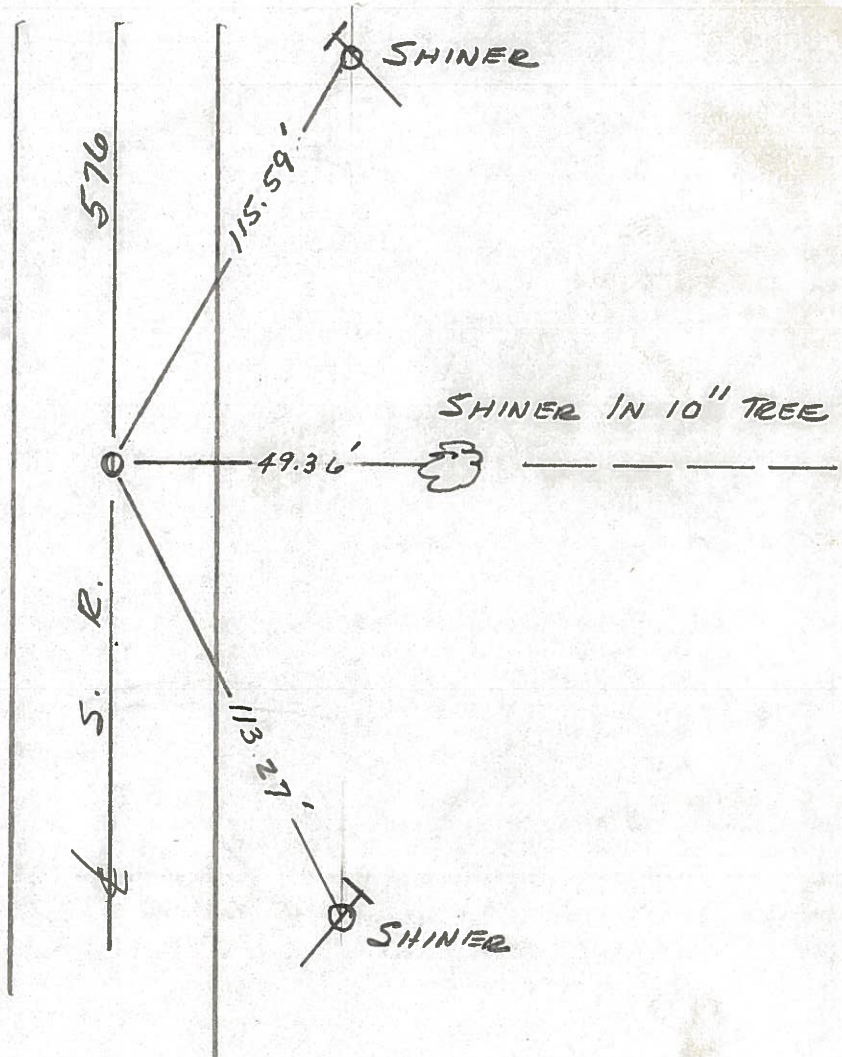
LEFT- & PAV'T. - RIGHT _____

_____ TO _____ EDGE PAVEMENT

S.L.M. 240 + 54



W¹/₄ COR. SEC. 11
Set PK Nail 7/28/88 IRS



Q.D.O.T. DISTRICT 2 SURVEY OFFICE

SHEET _____ OF _____

County Williams S.R. 576

Date 1-20-83

Township CENTER

Weather cloudy

Section 11

Temp. +18°

T6N, R2E

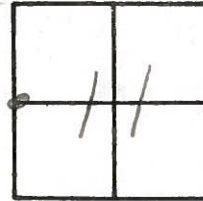
Personnel HOFFMAN

BARNHISEL

HOUSEHOLDER

LOEHRKE

11



Fd R.R. spk @ surface

S.L.M. 240+54

0.7' RT of & PAUT

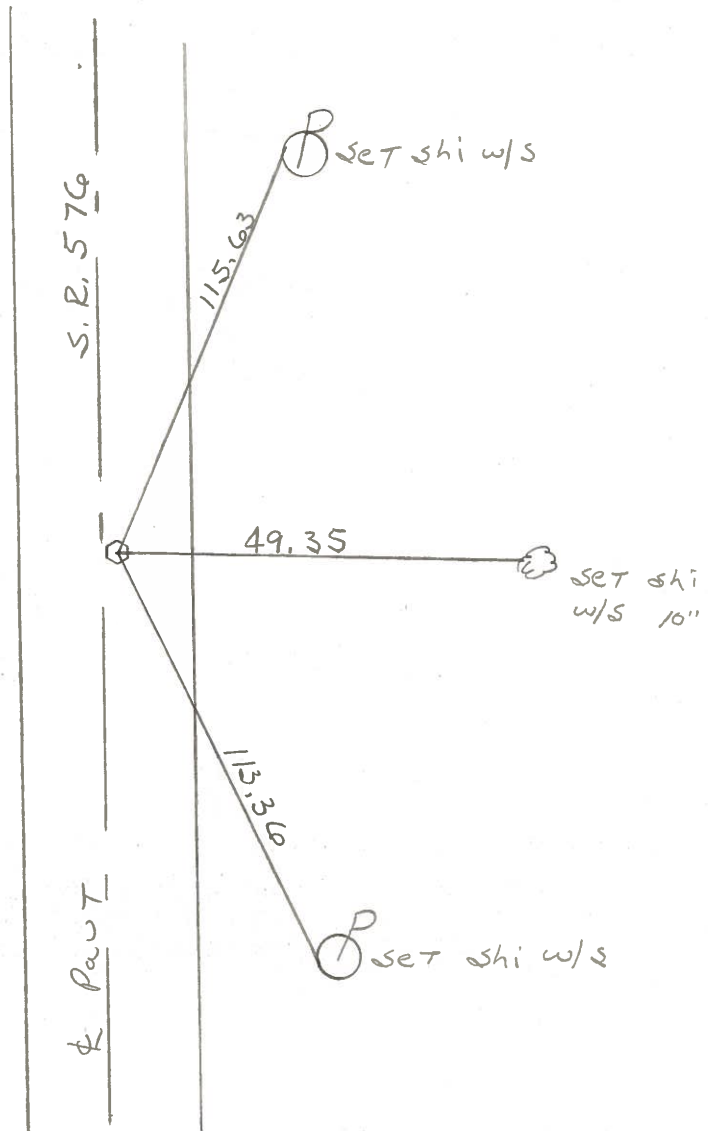
9.0' TO E.E.P.

10.2' TO W.E.P.

SET P.K./WASHER

6/16/83

J.H.



County Williams S.R. 576

Date 18 Aug, 80

Township Center

Weather Cloudy

Section 11

Temp. 67°

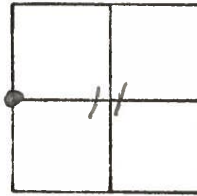
T N, R E

Personnel I. Stone

R. Michalak

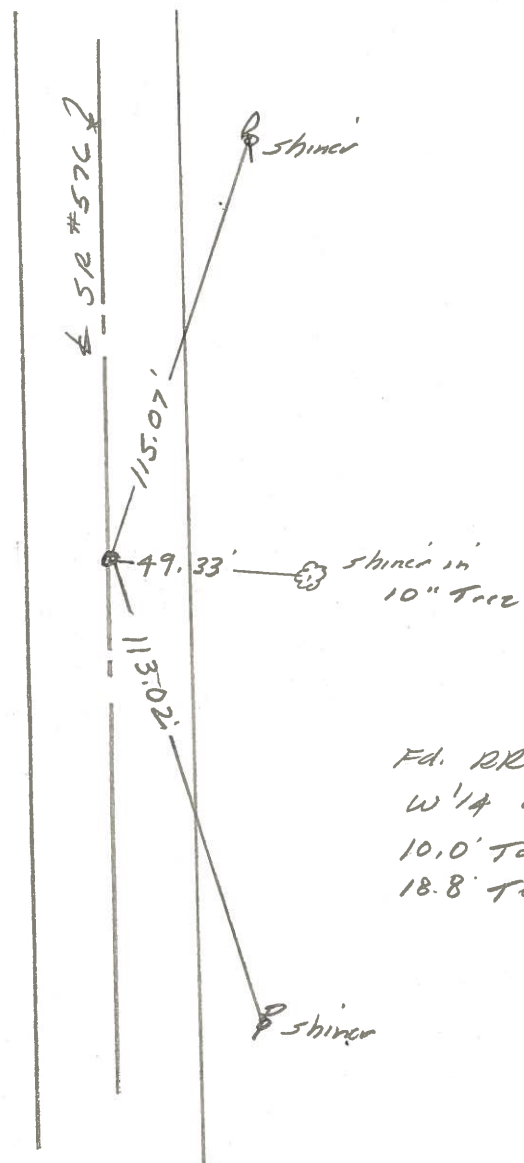
P. Nousek

D. Curtis



REF. NO. 11

SEE NEW TIES
BY
HOFFMAN
1983



Fd. DR Spk To Surface
W 1/4 Cor. Sec. 11
10.0' To W. edge put.
18.8' To E. edge put.

shiner