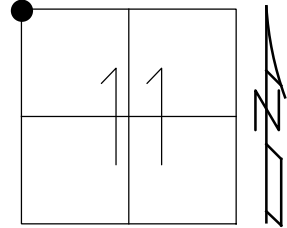


O.D.O.T. DISTRICT 2 SURVEY OFFICE (USE ONLY)

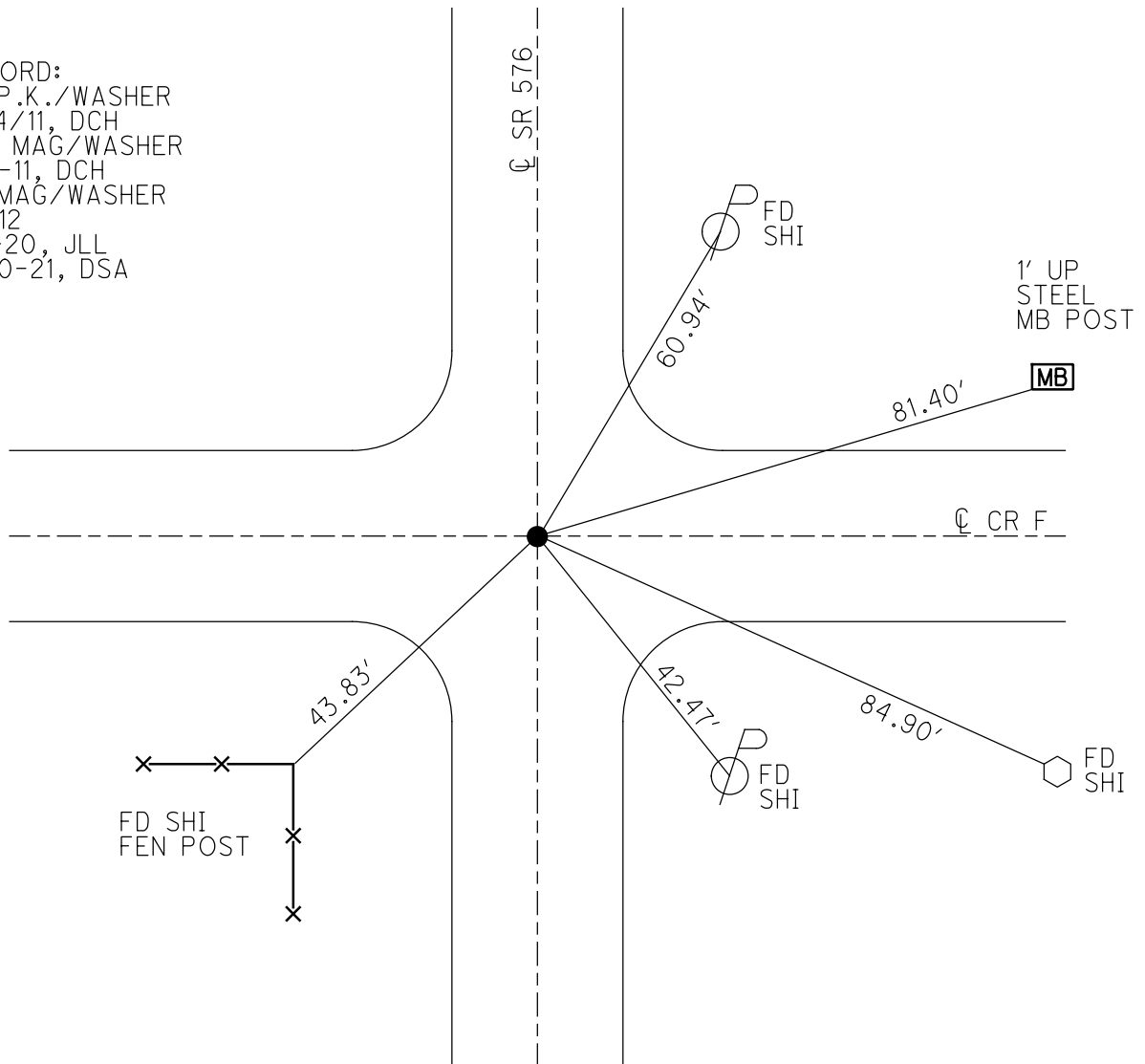
PERSONNEL \_\_\_\_\_ REFERENCE NO. 12 SHEET 13 OF 29  
 NOTES MAHLER DATE 7-1-20 ROUTE SR 576  
 H.C. LEU WEATHER SUNNY COUNTY WILLIAMS  
 R.C. MAHLER TEMP. 75°F TOWNSHIP CENTER  
 DWG BY MAHLER PID PAVETRAIN SECTION 11  
 T 6 N R 2 E

TYPE MONUMENT MAG/WASHER  
 ON SURFACE - ~~BELOW~~ ON  
 OFFSET CL PAVEMENT 0.5' LT : RT  
14.2' TO RT EDGE PAVEMENT  
 STATION: 265+28.51



HORZ. DATUM: NAD83 2011 GEOID: NAVD88 2018  
 GRID: NORTHING: 674806.307 EASTING: 1389728.739

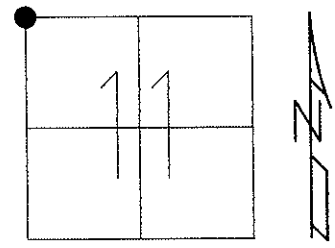
RECORD:  
 FD P.K./WASHER  
 6/14/11, DCH  
 SET MAG/WASHER  
 8-11-11, DCH  
 FD MAG/WASHER  
 REF12  
 7-1-20, JLL  
 9-20-21, DSA



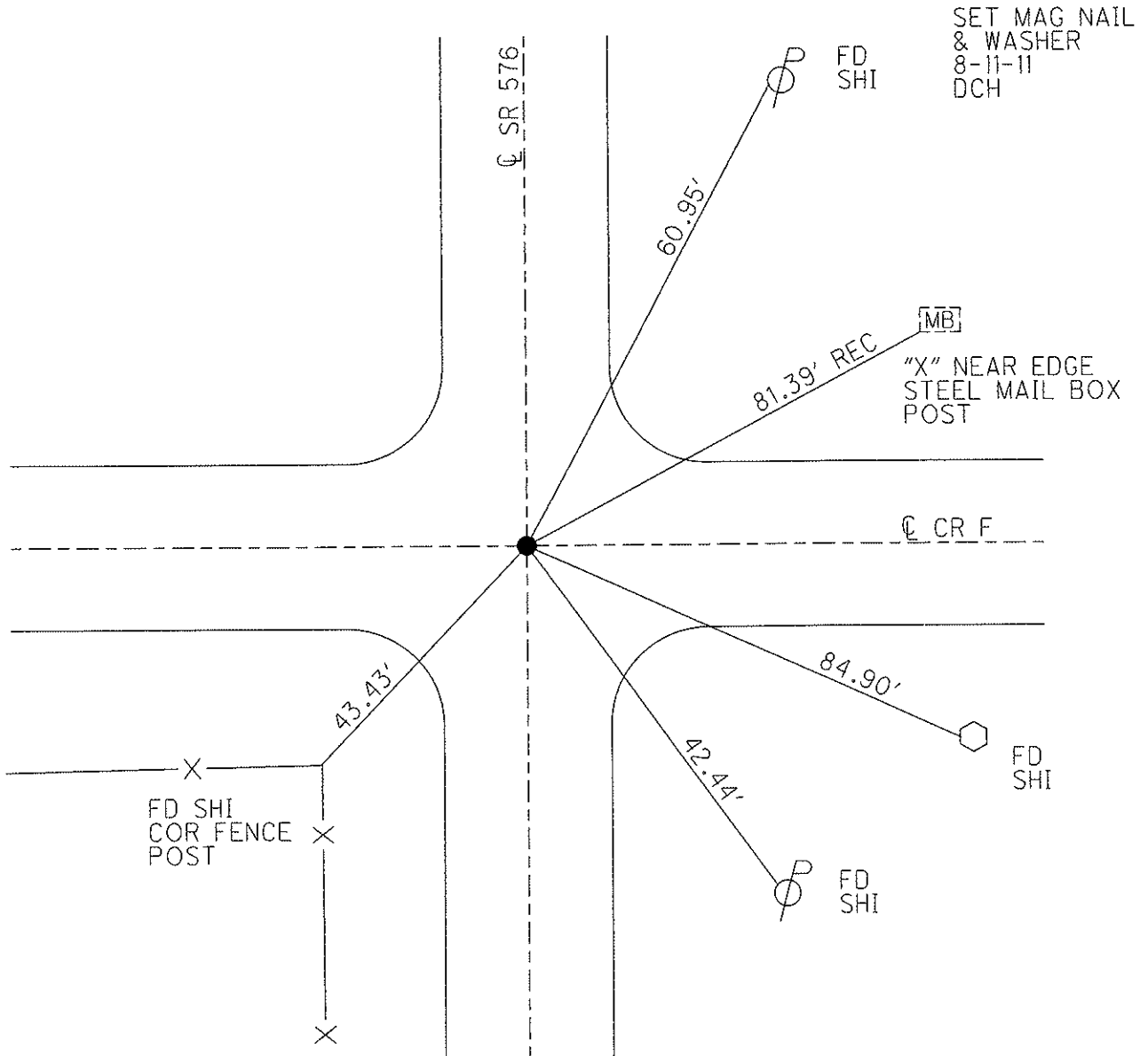
O.D.O.T. DISTRICT 2 SURVEY OFFICE USE ONLY

PERSONNEL	REFERENCE NO. <u>12</u>	SHEET <u>11</u> OF <u>27</u>
NOTES <u>HOMAN</u>	DATE <u>6-14-11</u>	ROUTE <u>S.R. 576</u>
H.C. <u>HOMAN</u>	WEATHER <u>SUNNY</u>	COUNTY <u>WILLIAMS</u>
R.C. <u>ROUSOS</u>	TEMP. <u>80°</u>	TOWNSHIP <u>CENTER</u>
		SECTION <u>11</u>
		T <u>6</u> N R <u>2</u> E

TYPE MONUMENT PK/WASHER  
 ON SURFACE - ~~BELOW~~ ON  
 LEFT - ~~C PAV'T~~ RIGHT 0.5' LT  
14.2' TO RT. EDGE PAVEMENT  
 S.L.M. 265+29



Grid: Northing: 674806.258 Easting: 1389728.685



O.D.O.T. DISTRICT 2 SURVEY OFFICE

PERSONNEL

REFERENCE NO. 12

SHEET 5 OF 5

NOTES NUHFER

DATE 7-6-06

ROUTE SR 576

H.C. MIKLOVIC

WEATHER SUN/WINDY

COUNTY WILLIAMS

R.C. HUSS

TEMP. +70°

TOWNSHIP CENTER

SECTION 2-3-10-11

T 6 N R 2 E

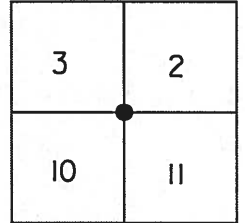
TYPE MONUMENT PK/WASHER

ON SURFACE - ~~BELOW~~ SURFACE

LEFT - ☉ PAV'T - ~~RIGHT~~ 0.5' W

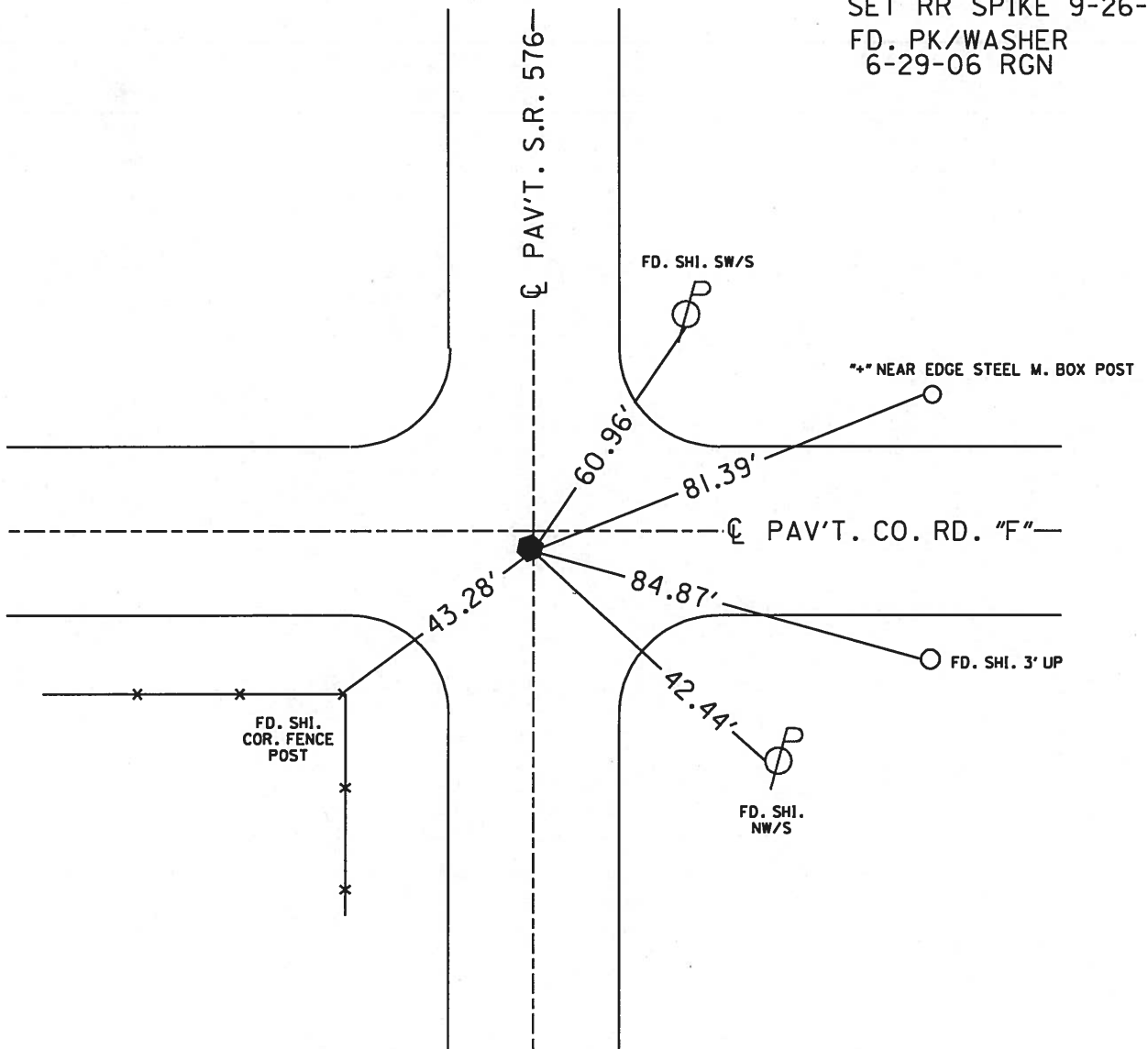
14.2' TO RT. EDGE PAVEMENT

S.L.M. 266+13.29



SET RR SPIKE 9-26-88

FD. PK/WASHER  
6-29-06 RGN



# O.D.O.T. DISTRICT 2 SURVEY OFFICE

PERSONNEL \_\_\_\_\_

REFERENCE NO. 12

SHEET 2 OF 17

NOTES CANTERBURY

H.C. ROUSOS

R.C. BARNHISEL

DATE 5/23/97

WEATHER SUN

TEMP. +70°

ROUTE S.R. #576

COUNTY WILLIAMS

TOWNSHIP CENTER

SECTION 2-3-10-11

T 6 N R 2 E

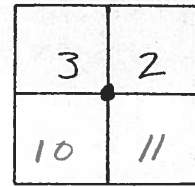
TYPE MONUMENT R.R. SPK.

ON SURFACE - ~~BELOW~~ SURFACE

~~LEFT - & PAV'T. - RIGHT~~ ON &

14.2' TO RT EDGE PAVEMENT

S.L.M. 267+45



RESET PK/WASHER  
 8-20-97  
 MRC

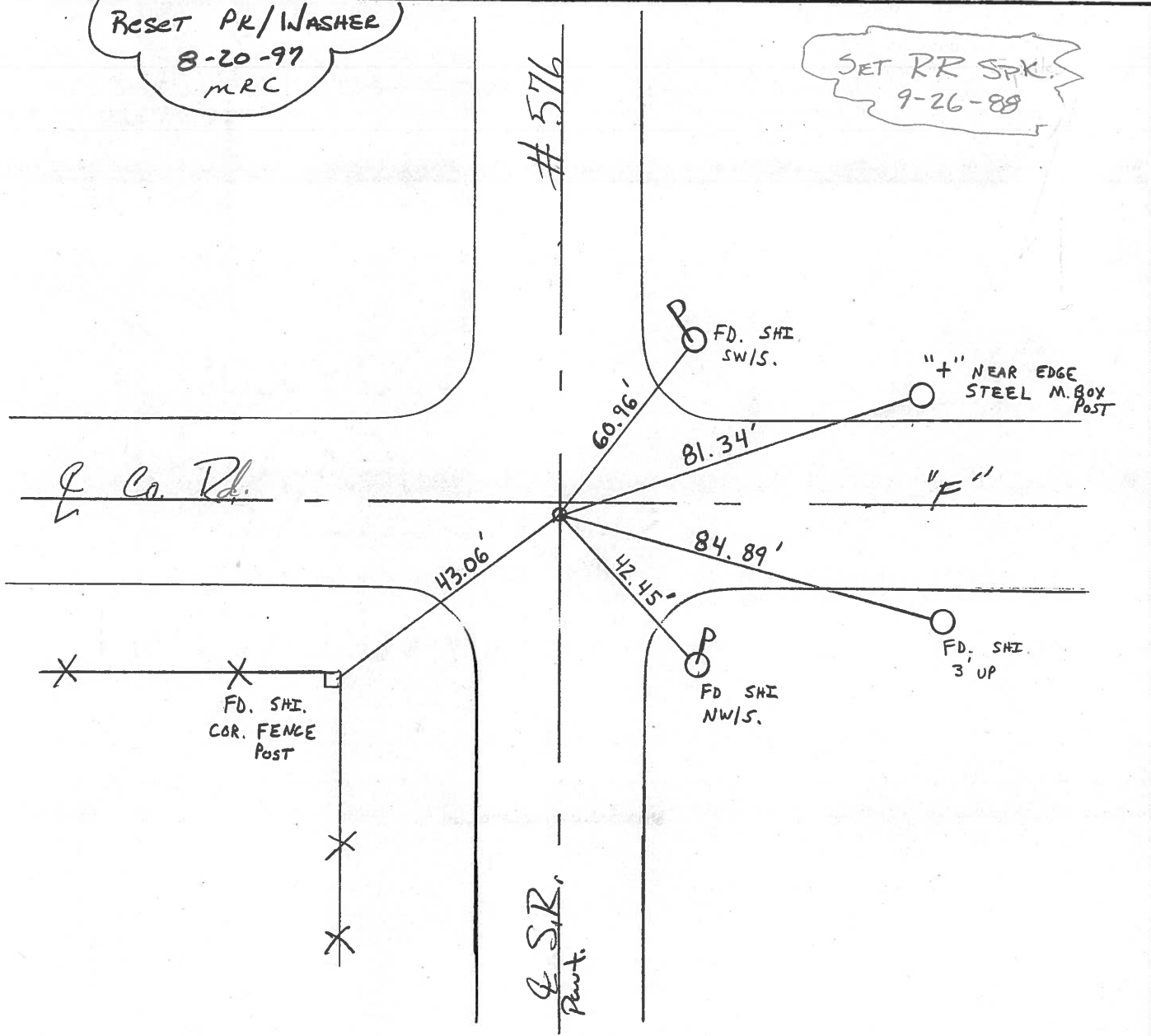
SET RR SPK.  
 9-26-88

#576

& Co. Rd.

"F"

# S.R.  
Part.



# O.D.O.T. DISTRICT 2 SURVEY OFFICE

PERSONNEL

REFERENCE NO. 12

SHEET 3 OF 19

NOTES 1. Stone

H.C. D. Curtis

DATE 26 Sept. 88

ROUTE SR# 576

R.C. J. Householder

WEATHER Fair

COUNTY Williams

TEMP. 680

TOWNSHIP Center

SECTION 2-3-10-11

T     R    

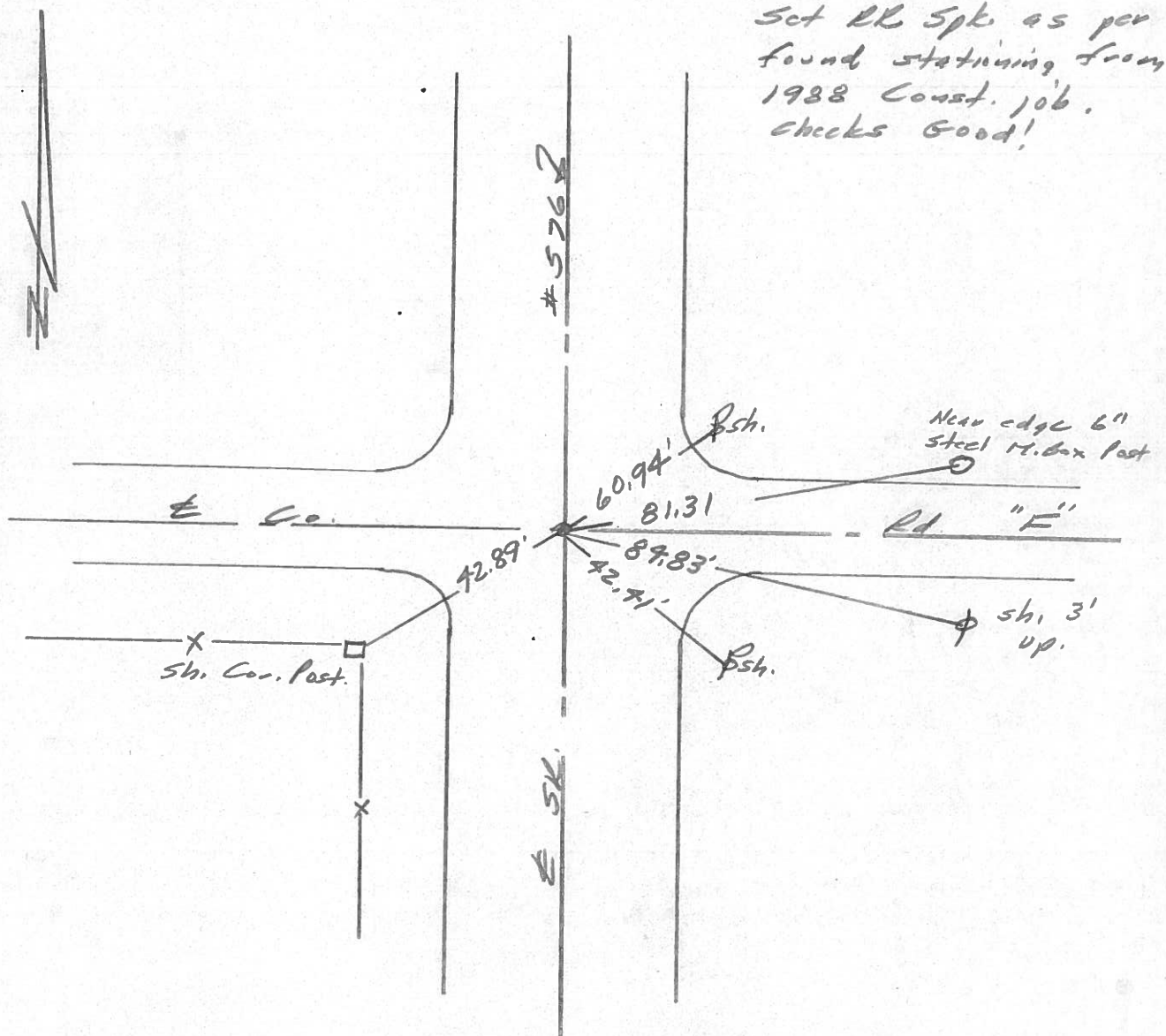
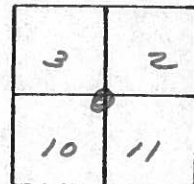
TYPE MONUMENT R. R. Spk

ON SURFACE - BELOW Surface

LEFT - € PAV'T. - RIGHT €

TO     EDGE PAVEMENT

S.L.M. 267+16



# O.D.O.T. DISTRICT 2 SURVEY OFFICE

PERSONNEL \_\_\_\_\_

REFERENCE NO. 12

SHEET 3 OF 19

NOTES D. CURTIS

H.C. J. HOUSEHOLDER DATE 9-29-86

ROUTE 576

R.C. \_\_\_\_\_ WEATHER WARM

COUNTY WILLIAMS

TEMP. 75°

TOWNSHIP CENTER

SECTION 11

T 6 R 2 E

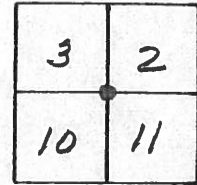
TYPE MONUMENT R.R. SPK.

ON SURFACE - BELOW 2" BELOW

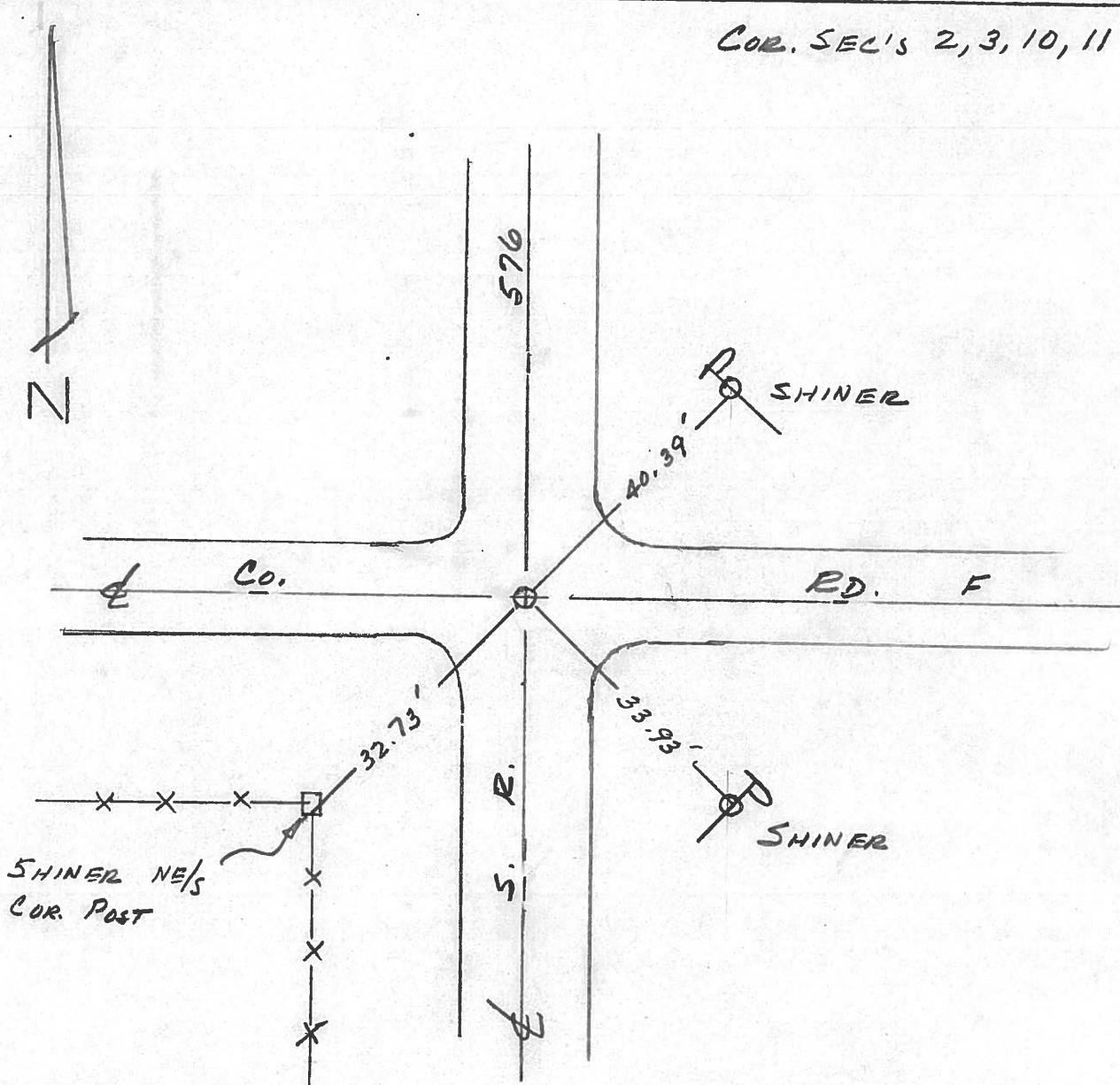
LEFT - &lt;math>\text{C}</math> PAV'T. - RIGHT 1.2' LT &lt;math>\text{E}</math> S.R. 576 PAVM.T

TO \_\_\_\_\_ EDGE PAVEMENT

S.L.M. 267 + 16



COR. SEC'S 2, 3, 10, 11



OD.O.T. DISTRICT 2 SURVEY OFFICE

SHEET \_\_\_\_\_ OF \_\_\_\_\_

County Williams S.R. 576

Date 1-20-83

Township CENTER

Weather Cloudy

Section 11

Temp. +18°

T6N, R2E

Personnel HOFFMAN

3	2
10	11



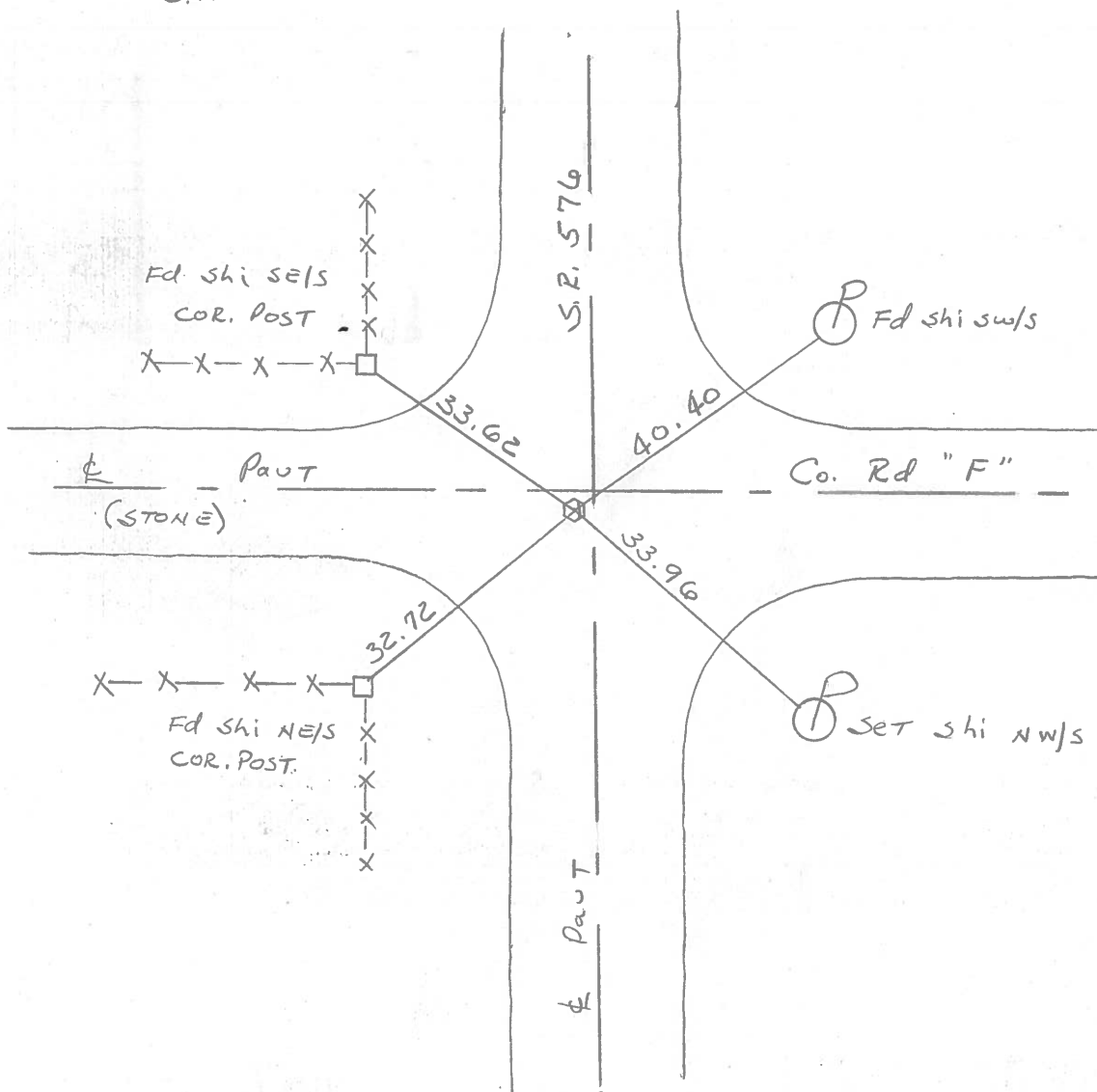
#12

‡  
CREW

Fd R.R. SPK @ SURFACE  
1.2' LT. & PAUT SR576  
1.6' SOUTH & PAUT Rd "F" EAST

S.I.M. 267 + 15

OK 6/14/83  
J.H.



County Williams S.R. #576

Date 18 Aug. 80

Township Center

Weather Cloudy

Section 2-3-10-11

Temp. 67°

T N, R E

Personnel L. Stone

3	2
10	11



R. Michalak  
P. Neuser  
D. Curtis

REF. NO. 12

