

O.D.O.T. DISTRICT 2 SURVEY OFFICE (USE ONLY)

PERSONNEL

REFERENCE NO. 13

SHEET 14 OF 29

NOTES MAHLER

DATE 7-1-20

ROUTE SR 576

H.C. LEU

WEATHER SUNNY

COUNTY WILLIAMS

R.C. MAHLER

TEMP. 75°F

TOWNSHIP CENTER

SECTION 2

DWG BY MAHLER PID PAVETRAIN

T 6 N R 2 E

TYPE MONUMENT MAG/WASHER

ON SURFACE - ~~BELOW~~ ON

OFFSET Q PAVEMENT ON LT : RT  
10' TO RT EDGE PAVEMENT

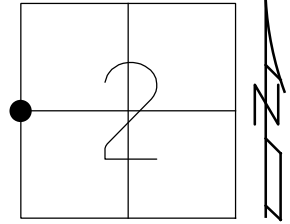
STATION: 291+22.22

HORZ. DATUM: NAD83 2011

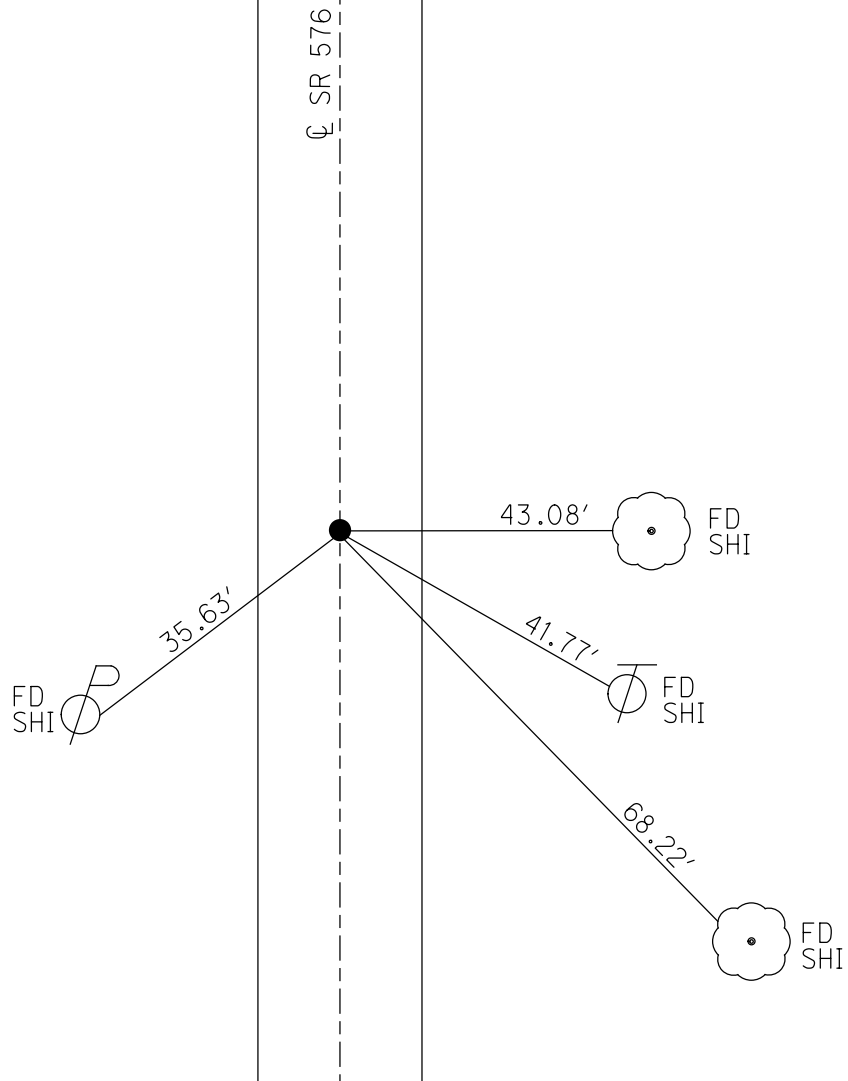
GEOID: NAVD88 2018

GRID: NORTHING: 677399.331

EASTING: 1389783.386



RECORD:  
 FD P.K. NAIL  
 6/14/11, DCH  
 SET MAG/WASHER  
 8-11-11, DCH  
 FD MAG/WASHER  
 REF13  
 7-1-20  
 9-20-21, DSA



O.D.O.T. DISTRICT 2 SURVEY OFFICE USE ONLY

PERSONNEL \_\_\_\_\_

REFERENCE NO. 13

SHEET 12 OF 27

NOTES HOMAN

DATE 6-14-11

ROUTE S.R. 576

H.C. HOMAN

WEATHER SUNNY

COUNTY WILLIAMS

R.C. ROUSOS

TEMP. 80°

TOWNSHIP CENTER

SECTION 2

T 6 N R 2 E

TYPE MONUMENT \_\_\_\_\_ PK \_\_\_\_\_

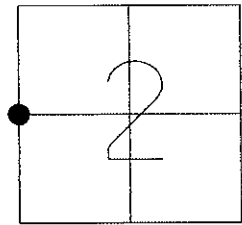
ON SURFACE - ~~BELOW~~ \_\_\_\_\_ ON \_\_\_\_\_

~~LEFT - Q PAV'T - RIGHT~~ \_\_\_\_\_ ON \_\_\_\_\_

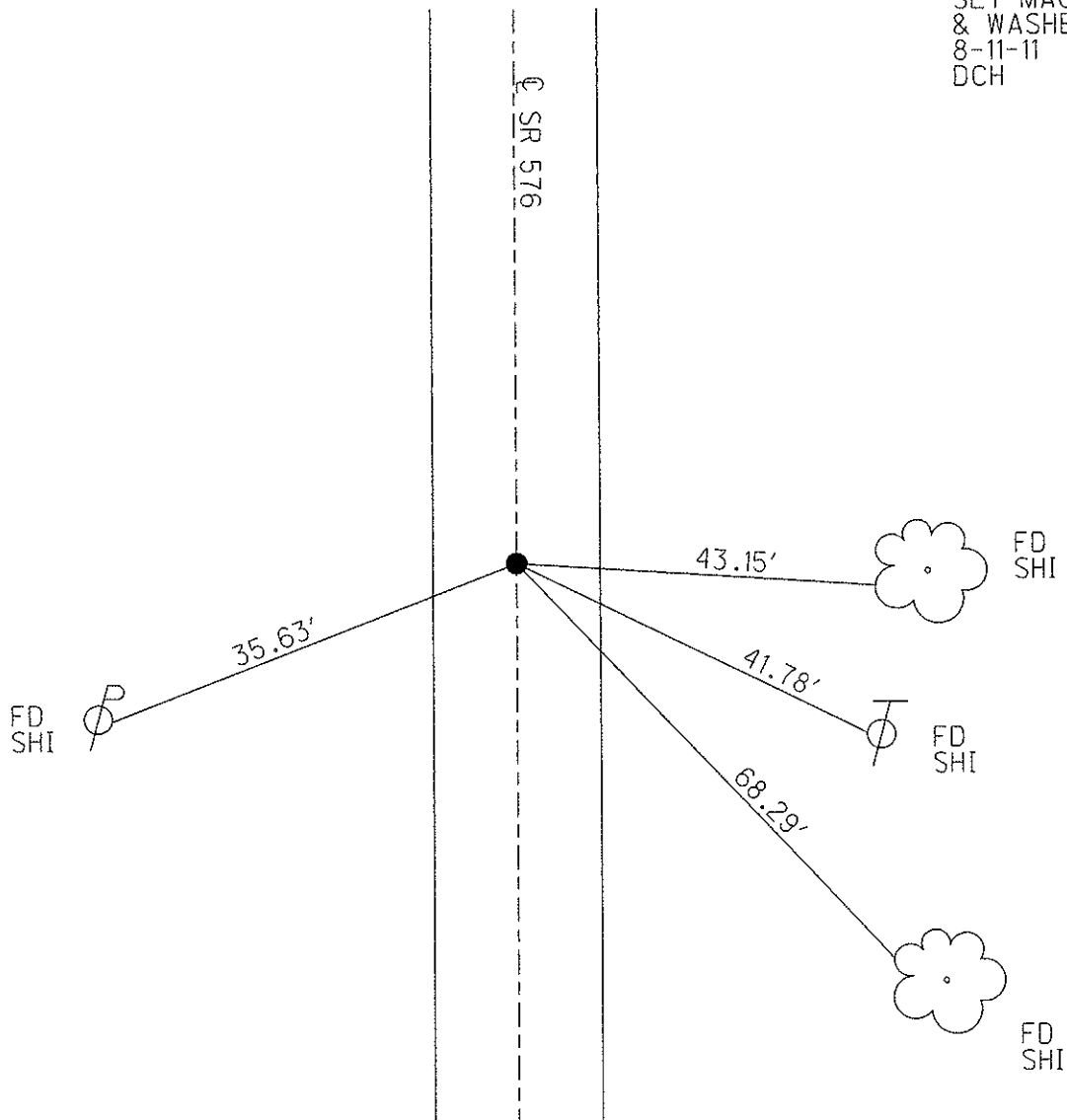
10 TO RT EDGE PAVEMENT

S.L.M. 291+22

Grid: Northing: 677399.396 Easting: 1389783.236



SET MAG NAIL  
& WASHER  
8-11-11  
DCH



# O.D.O.T. DISTRICT 2 SURVEY OFFICE

PERSONNEL \_\_\_\_\_

REFERENCE NO. 13

SHEET 3 OF 17

NOTES CANTERBURY

H.C. Rousos

R.C. BARNHISEL

DATE 5/23/97

WEATHER SUN

TEMP. +72°

ROUTE S.R. #576

COUNTY WILLIAMS

TOWNSHIP CENTER

SECTION 2

T.6 N. R. 2 E

TYPE MONUMENT R.R. SPK.

ON ~~SURFACE~~ - BELOW 2" BELOW

LEFT - ~~C~~ PAV'T. - RIGHT ON E

10.0 TO RT EDGE PAVEMENT

S.L.M. 293 + 42

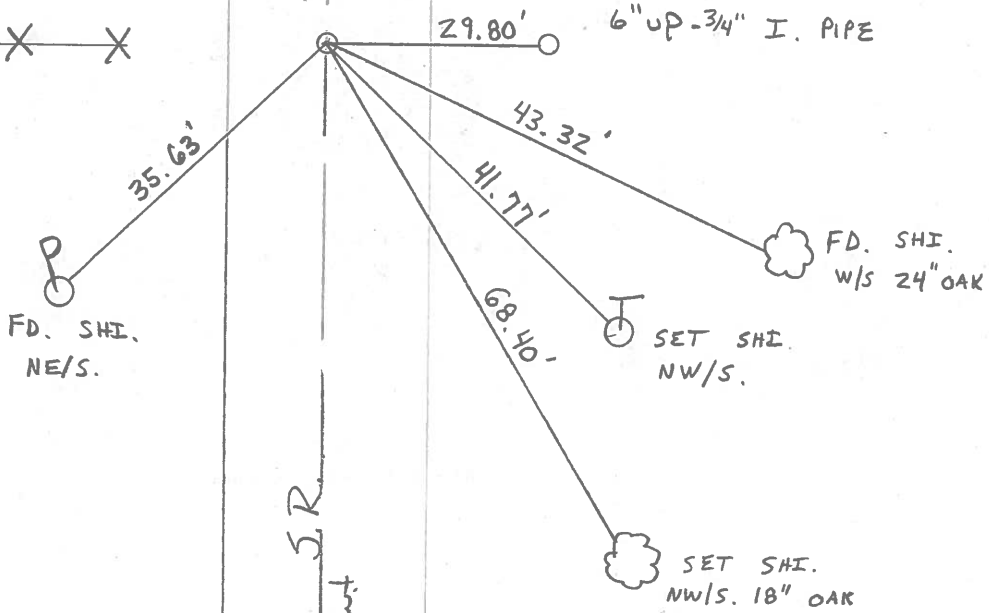


Reset PK/WASHER  
8-20-97  
MRC

FD. RR. SPK. 4" DEEP  
7-28-88  
I. Stone

#576

S.R.  
Point



# O.D.O.T. DISTRICT 2 SURVEY OFFICE

PERSONNEL \_\_\_\_\_

REFERENCE NO. 13

SHEET 4 OF 19

NOTES D. CURTIS

H.C. J. HOUSEHOLDER DATE 9-29-86

R.C. \_\_\_\_\_ WEATHER WARM

\_\_\_\_\_ TEMP. 75°

ROUTE 576

COUNTY WILLIAMS

TOWNSHIP CENTER

SECTION 2

T 6 N R 2 E

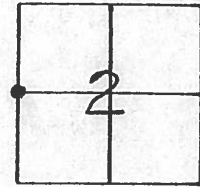
TYPE MONUMENT R.R. SPK.

ON SURFACE - BELOW 2" BELOW

LEFT-℄ PAV'T. - RIGHT ℄ PAVM'T

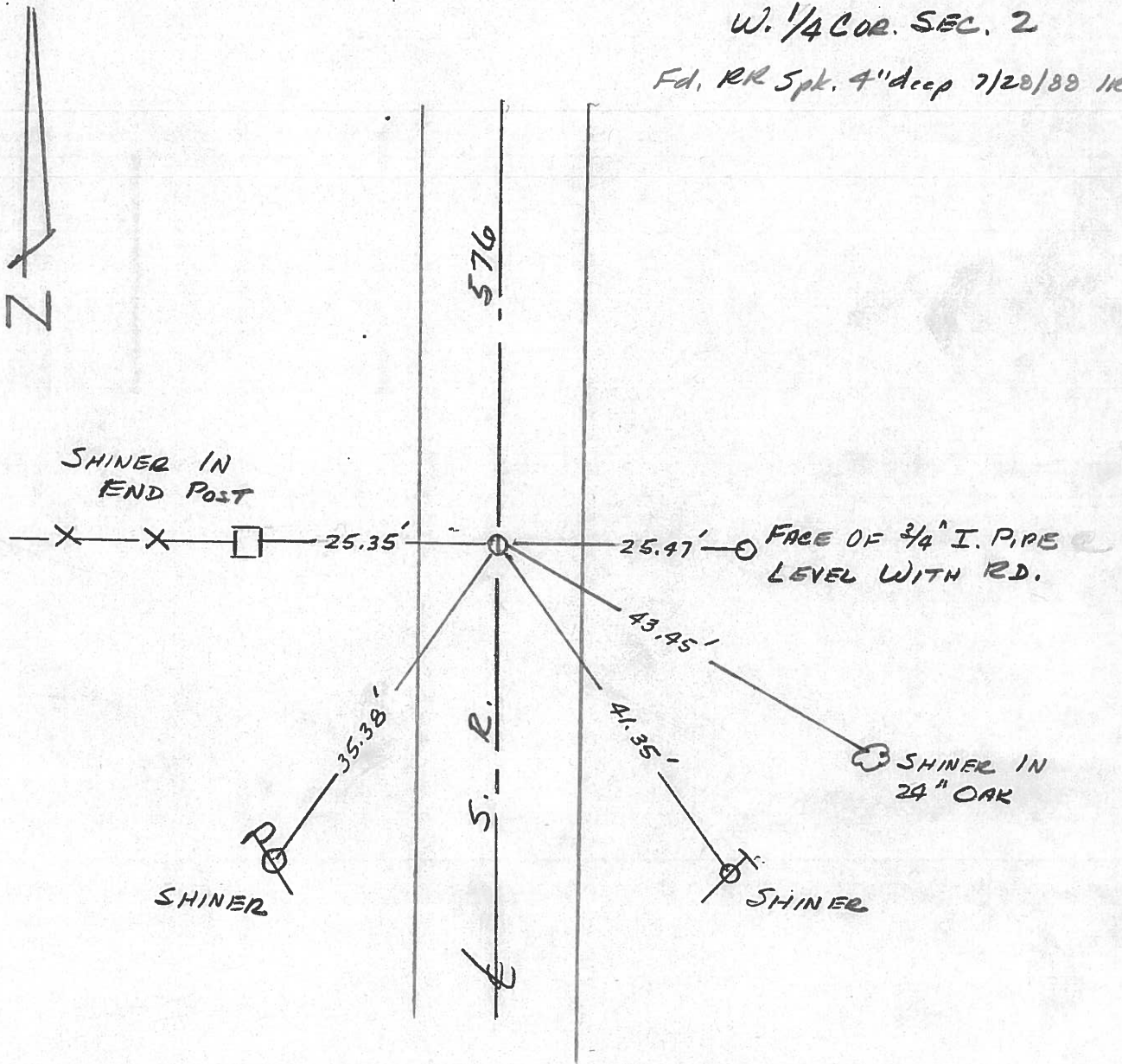
\_\_\_\_\_ TO \_\_\_\_\_ EDGE PAVEMENT

S.L.M. 293 + 10



*W. 1/4 COR. SEC. 2*

*Fd. RR Spk. 4" deep 7/20/89 IKS*



Q.D.O.T. DISTRICT 2 SURVEY OFFICE

SHEET \_\_\_\_\_ OF \_\_\_\_\_

County Williams S.R. 576

Date 1-20-83

Township CENTER

Weather Cloudy

Section 2

Temp. +18°

T6N, R2E

Personnel HOFFMAN

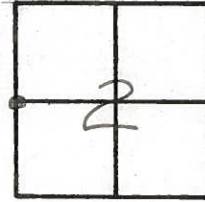
+

CREW

\_\_\_\_\_

\_\_\_\_\_

# 13

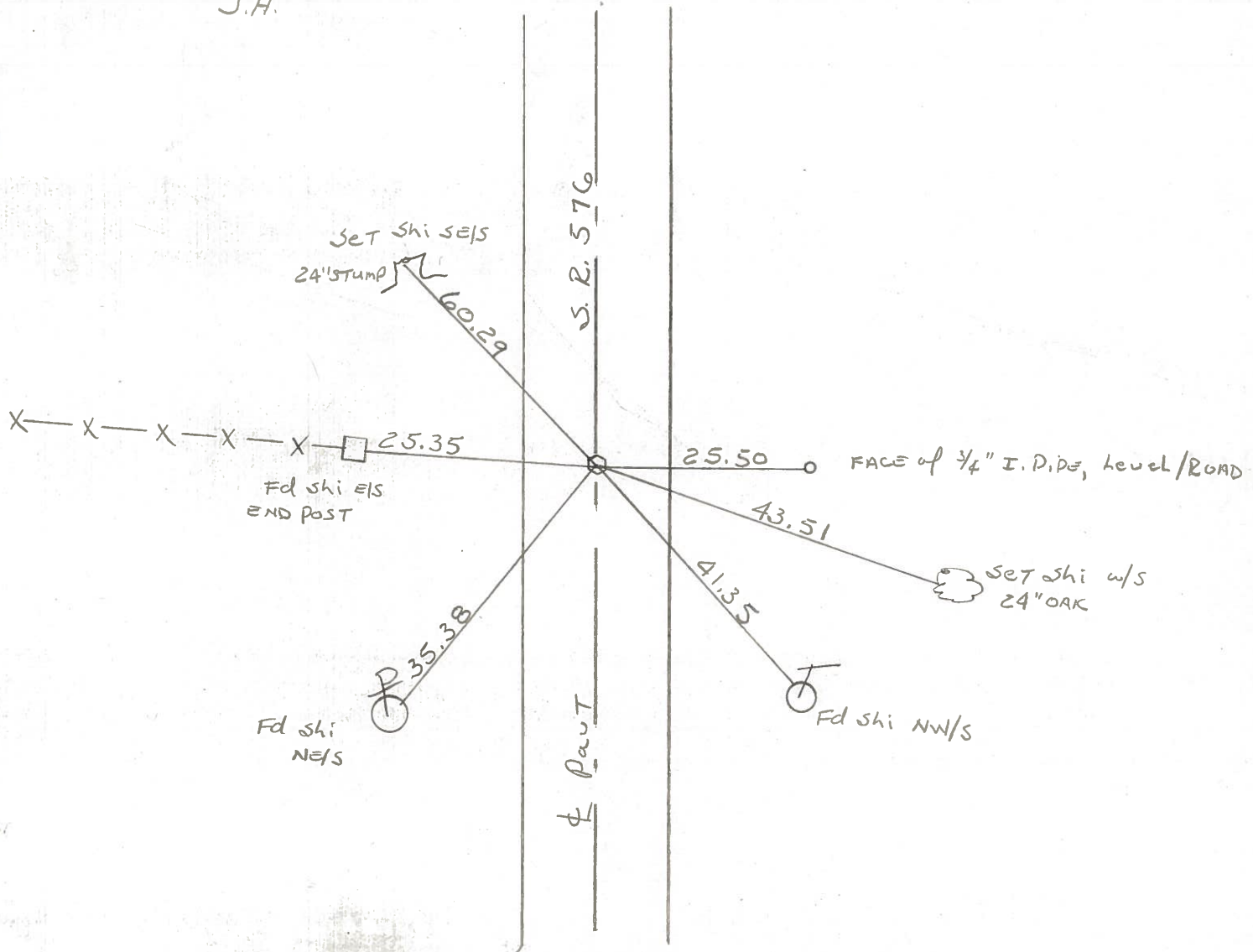


Fd R.R. SPK @ SURFACE  
ON & PAUT  
9.3' TO W.E.P.  
9.7' TO E.E.P.

S.L.M. 293+10

OK 6/16/83

J.H.



County Williams S.R. 576

Date 18 Aug. 80

Township Centre

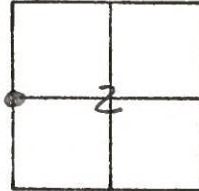
Weather Cloudy

Section 2

Temp. 67°

T N, R E

Personnel I. Stone



R. Michalak

P. Neuser

D. Curtis

REF. NO. 13

