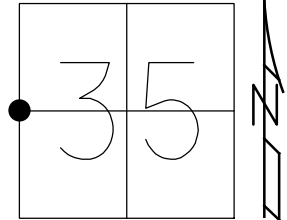


O.D.O.T. DISTRICT 2 SURVEY OFFICE (USE ONLY)

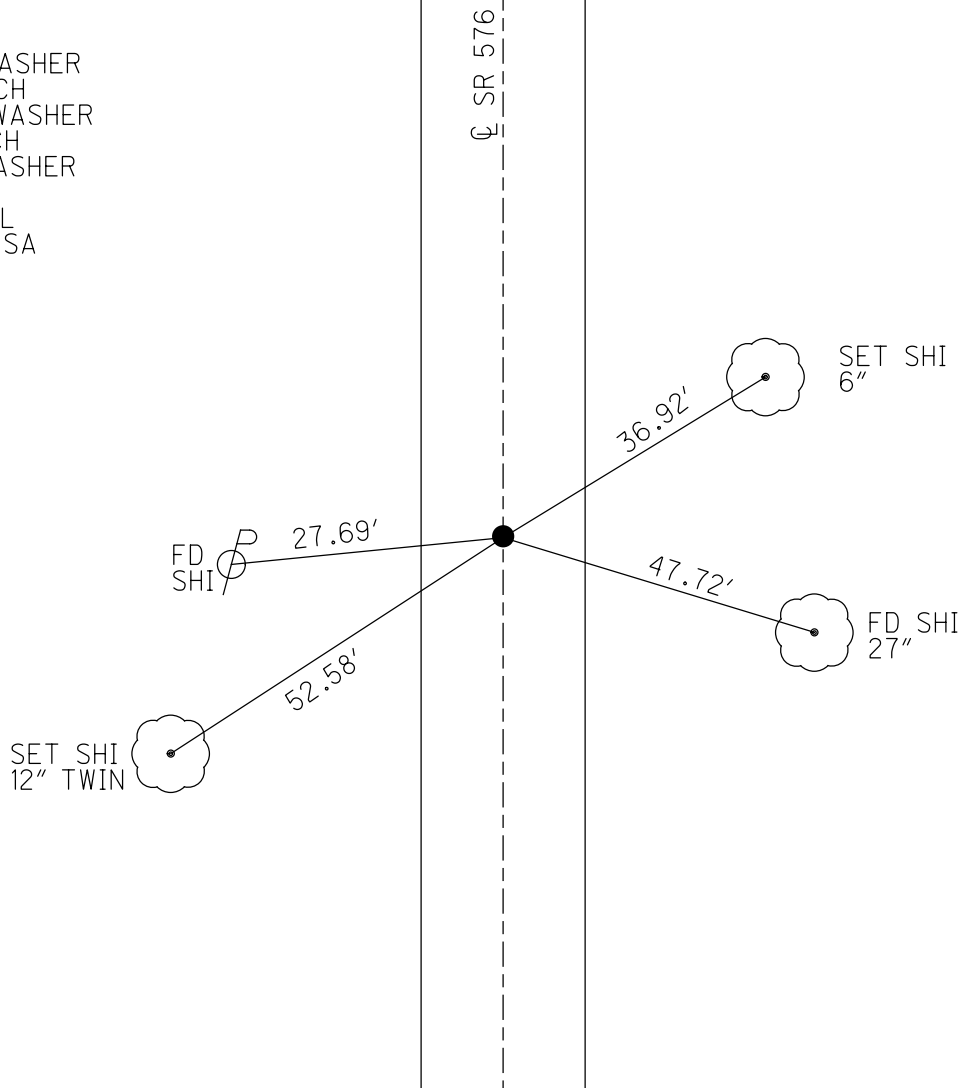
PERSONNEL _____ REFERENCE NO. 14 A SHEET 17 OF 29
 NOTES MAHLER DATE 7-1-20 ROUTE SR 576
 H.C. LEU WEATHER SUNNY COUNTY WILLIAMS
 R.C. MAHLER TEMP. 75°F TOWNSHIP SUPERIOR
 DWG BY MAHLER PID PAVETRAIN SECTION 35
 T 6 N R 2 E

TYPE MONUMENT MAG/WASHER
 ON SURFACE - ~~BELOW~~ ON
 OFFSET Q PAVEMENT 0.8' LT : RT
8.7' TO LT EDGE PAVEMENT
 STATION: 344+28.00



HORZ.DATUM: NAD83 2011 GEOID: NAVD88 2018
 GRID: NORTHING: 682615.093 EASTING: 1389964.542

RECORD:
 FD P.K./WASHER
 6/14/11, DCH
 SET MAG/WASHER
 8-19-11, DCH
 FD MAG/WASHER
 REFA14
 7-1-20, JLL
 9-20-21, DSA



O.D.O.T. DISTRICT 2 SURVEY OFFICE USE ONLY

PERSONNEL

REFERENCE NO. 14-A

SHEET 15 OF 27

NOTES HOMAN

DATE 6-14-11

ROUTE S.R. 576

H.C. ROUSOS

WEATHER SUNNY

COUNTY WILLIAMS

R.C. HOMAN

TEMP. 80°

TOWNSHIP SUPERIOR

SECTION 35

T 7 N R 2 E

TYPE MONUMENT PK/WASHER

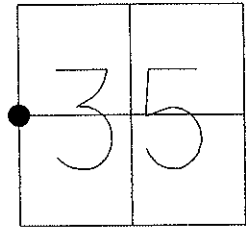
ON SURFACE - ~~BELOW~~ YES

LEFT - CL PAV'T - RIGHT 1.0

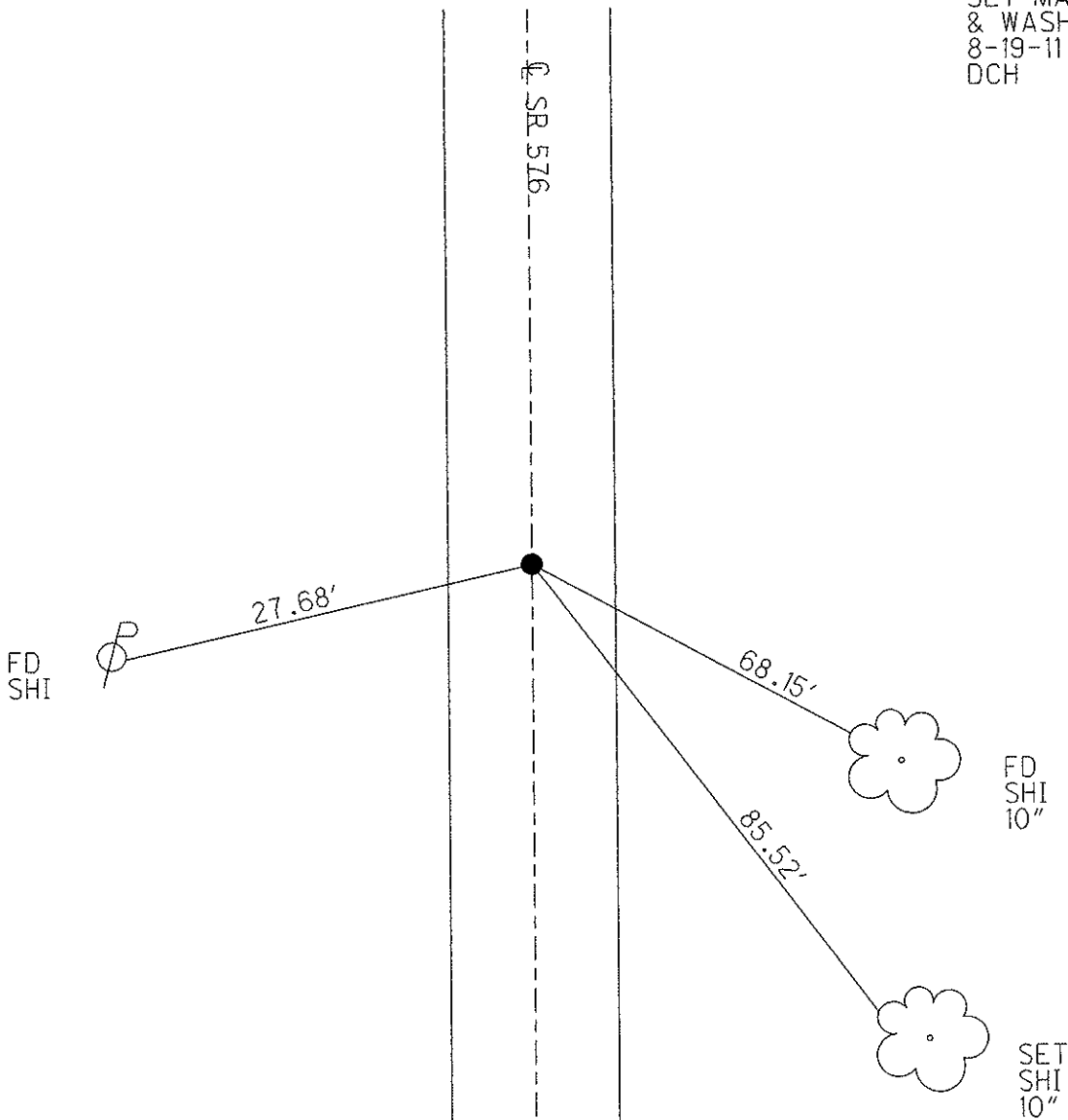
8.7 TO LT EDGE PAVEMENT

S.L.M. 344+28

Grid: Northing: 682615.084 Easting: 1389964.518



SET MAG NAIL
& WASHER
8-19-11
DCH



O.D.O.T. DISTRICT 2 SURVEY OFFICE

PERSONNEL _____

REFERENCE NO. 14A

SHEET 5 OF 17

NOTES CANTERBURY

H.C. Rousos

R.C. BARNHISEL III

DATE 5-23-97

WEATHER SUNNY

TEMP. +70°

ROUTE S.R. #576

COUNTY WILLIAMS

TOWNSHIP SUPERIOR

SECTION 35

T 7 N R 2 E

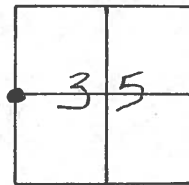
TYPE MONUMENT PK/WASHER

ON SURFACE - ~~BELON~~ yes

LEFT-~~E~~ PAV'T. - ~~RIGHT~~ 1.0

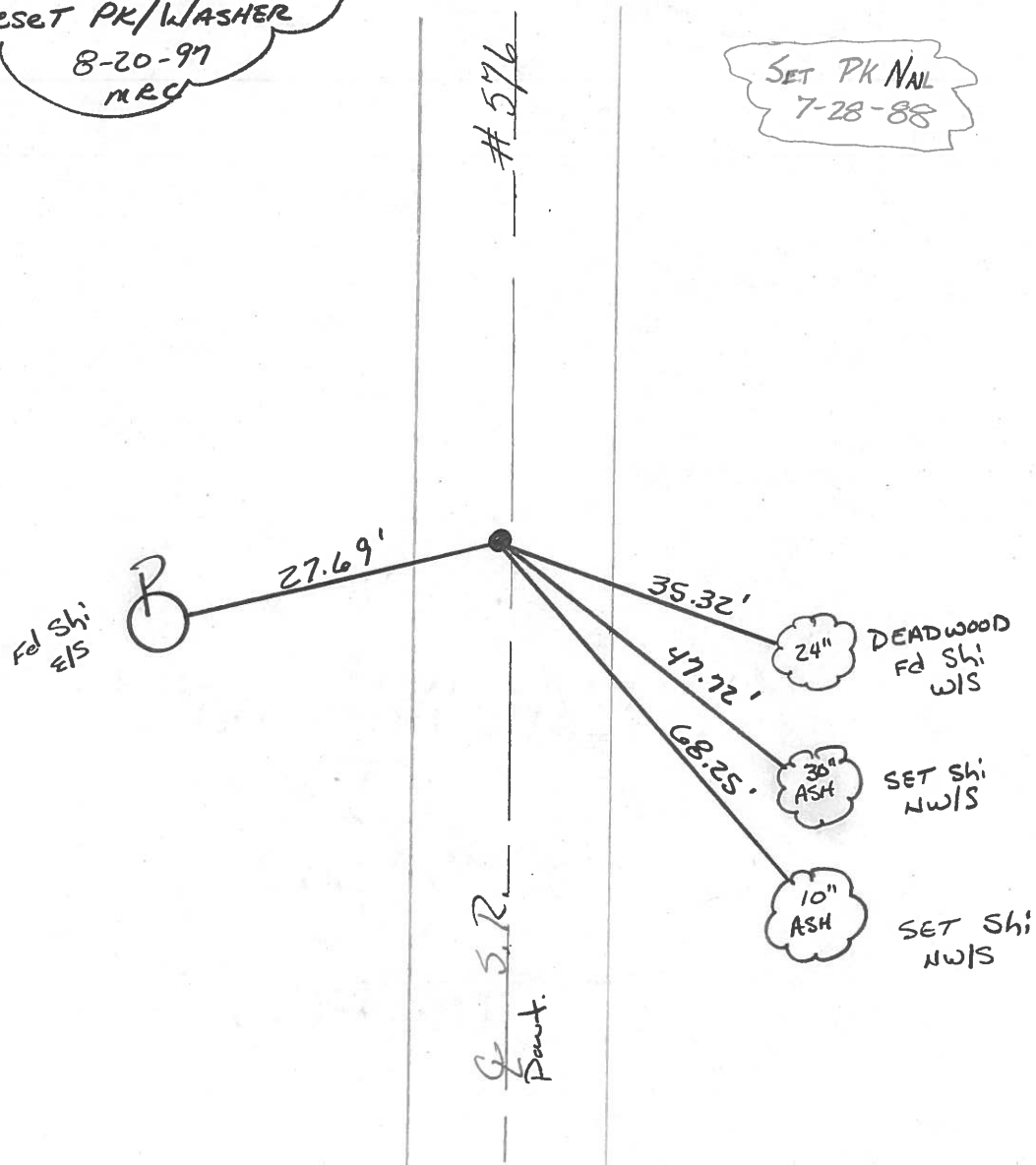
8.7 TO LT EDGE PAVEMENT

S.L.M. 345+77



Reset PK/WASHER
8-20-97
MRC

SET PK NAIL
7-28-88



O.D.O.T. DISTRICT 2 SURVEY OFFICE

PERSONNEL

REFERENCE NO. 14-A SHEET 6 OF 19

NOTES J. Householder

H.C. D. Curtis

DATE Sept. 29, 1986

ROUTE S.R. 576

R.C. _____

WEATHER Warm

COUNTY Williams

TEMP. ± 80°

TOWNSHIP Superior

SECTION 35

T _____ R _____

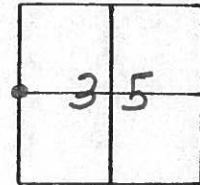
TYPE MONUMENT P.K. Nail/washer

ON SURFACE - BELOW Surface

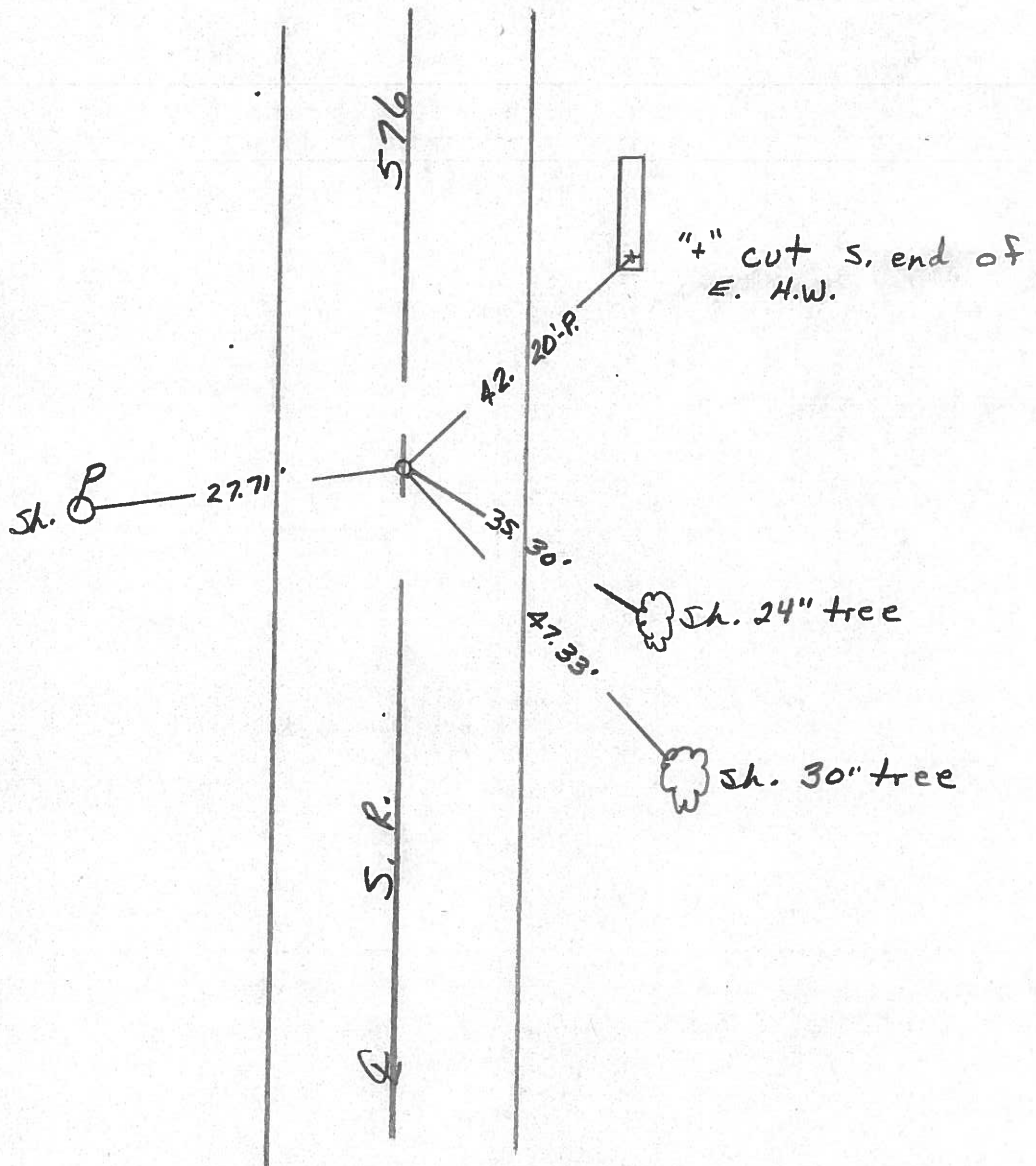
LEFT - ☉ PAV'T. - RIGHT 1' Left

TO _____ EDGE PAVEMENT

S.L.M. 345 + 42



Set PK Nail 7/28/88 1RS



Q.D.O.T. DISTRICT 2 SURVEY OFFICE

SHEET _____ OF _____

County Williams S.R. 576

Date 1-20-83

Township SUPERIOR

Weather P. CLEAR

Section 35

Temp. +20°

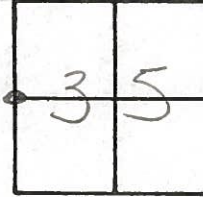
TZN, R2E

Personnel HOFFMAN

F

CREW

14-A



Fd R.R. SPIC @ surface

S.L.M. 345+44

1.3' LT. of ♀ PAUT

7.4' TO W.E.P.

10.3' TO E.E.P.

SET P.K./WASHER
6/16/83
J.H.

Fd shi E/S



27.71

S.R. 576

♀ PAUT

42.29-P

CUT " " TOP S. END of EAST HDWL

35.29

47.31

Fd shi w/s
24"

Set shi. NW/S
30"

County Williams S.R. 576

Date 18 Aug. 80

Township Superior

Weather Cloudy

Section 35

Temp. 79°

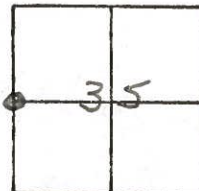
T N, R E

Personnel I. Stone

K. Michalak

P. Nouser

D. Curtis



REF. NO. 14-A

