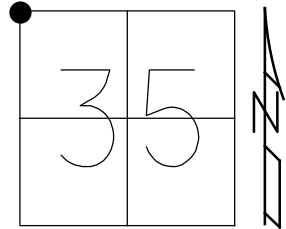


O.D.O.T. DISTRICT 2 SURVEY OFFICE (USE ONLY)

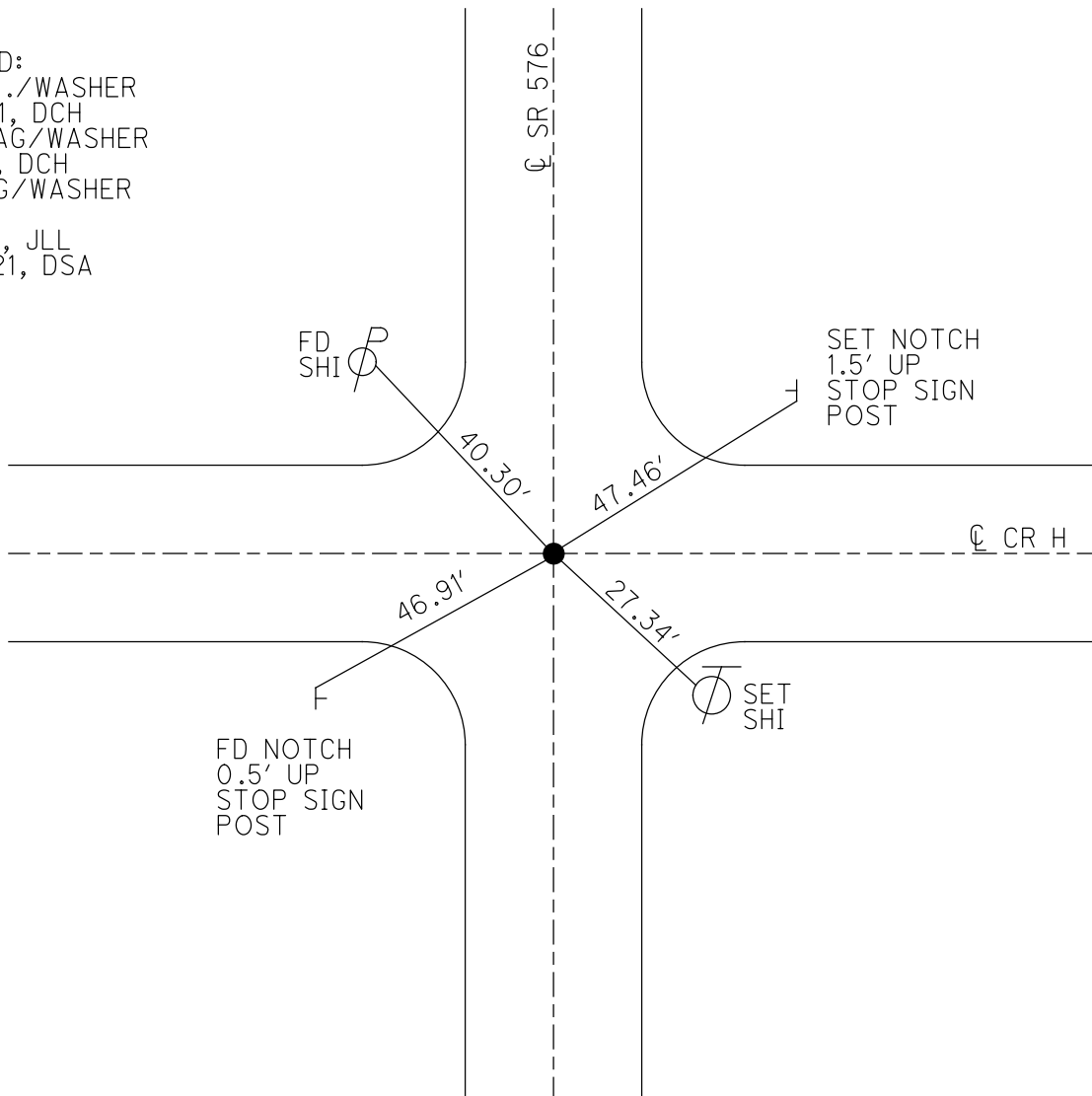
PERSONNEL \_\_\_\_\_ REFERENCE NO. 15 SHEET 18 OF 29  
 NOTES MAHLER DATE 7-1-20 ROUTE SR 576  
 H.C. LEU WEATHER SUNNY COUNTY WILLIAMS  
 R.C. MAHLER TEMP. 75°F TOWNSHIP SUPERIOR  
 SECTION 35  
 DWG BY MAHLER PID PAVETRAIN T 6 N R 2 E

TYPE MONUMENT MAG/WASHER  
 ON SURFACE - ~~BELOW~~ ON  
 OFFSET Q PAVEMENT 0.3' LT : RT  
9' TO LT EDGE PAVEMENT  
 STATION: 370+82.23

HORZ. DATUM: NAD83 2011 GEOID: NAVD88 2018  
 GRID: NORTHING: 685268.820 EASTING: 1390011.114



RECORD:  
 FD P.K./WASHER  
 6/14/11, DCH  
 SET MAG/WASHER  
 8-11-11, DCH  
 FD MAG/WASHER  
 REF15  
 7-1-20, JLL  
 9-20-21, DSA



O.D.O.T. DISTRICT 2 SURVEY OFFICE USE ONLY

PERSONNEL \_\_\_\_\_ REFERENCE NO. 15 SHEET 16 OF 27

NOTES HOMAN DATE 6-14-11 ROUTE S.R. 576

H.C. ROUSOS WEATHER SUNNY COUNTY WILLIAMS

R.C. HOMAN TEMP. 80° TOWNSHIP SUPERIOR

SECTION 35  
T 7 N R 2 E

TYPE MONUMENT PK/WASHER

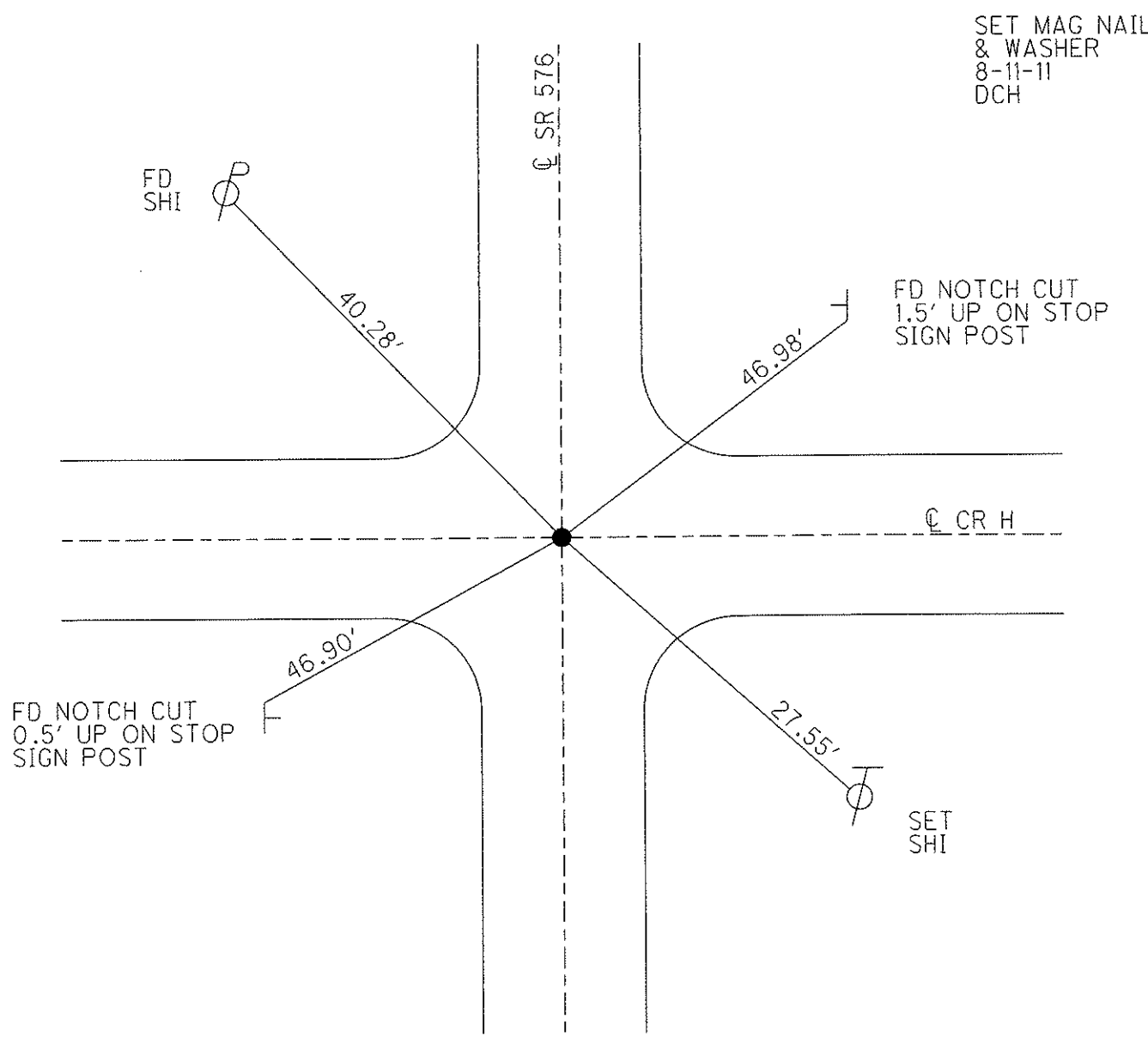
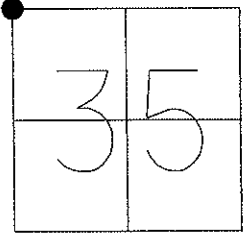
ON SURFACE - ~~BELOW~~ ON

LEFT - ~~C PAVT~~ RIGHT 0.7

9 TO LT EDGE PAVEMENT

S.L.M. 370+82

Grid: Northing: 685268.910 Easting: 1390011.107



# O.D.O.T. DISTRICT 2 SURVEY OFFICE

PERSONNEL \_\_\_\_\_

REFERENCE NO. 15

SHEET 6 OF 17

NOTES CANTERBURY

H.C. ROUSOS

DATE 5-20-97

ROUTE S.R #576

R.C. BARNHISEL III

WEATHER SUNNY

COUNTY WILLIAMS

TEMP. +70°

TOWNSHIP SUPERIOR

SECTION 35

T 7 N R 2 E

TYPE MONUMENT PK/WASHER

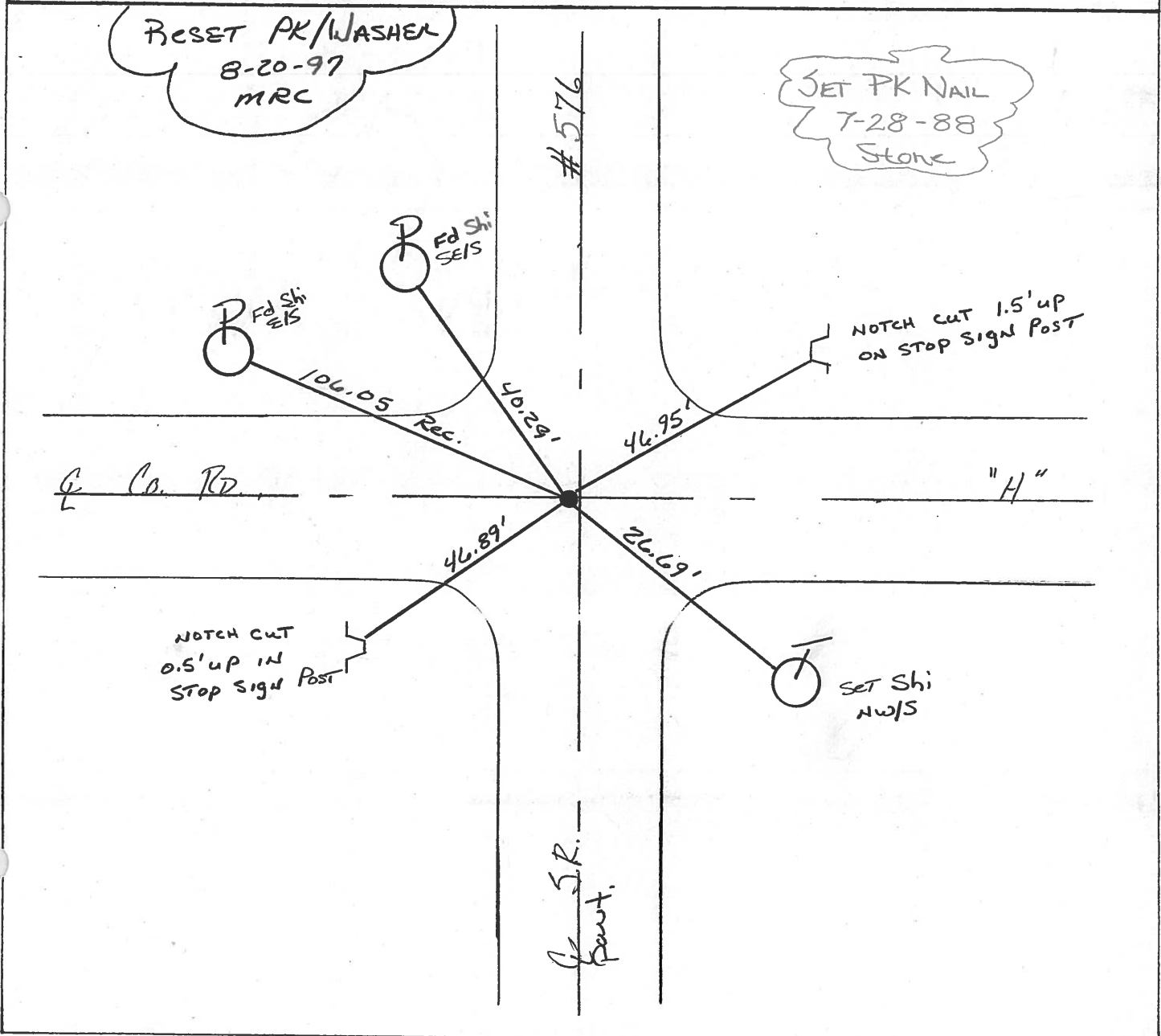
ON SURFACE - ~~BELOW~~ YES

LEFT- & PAV'T. - ~~RIGHT~~ 0.7

9.0 TO LT EDGE PAVEMENT

S.L.M. 372+35 ON & Co. Rd "H"

27	26
34	35



# O.D.O.T. DISTRICT 2 SURVEY OFFICE

PERSONNEL

REFERENCE NO. 15

SHEET 7 OF 19

NOTES J. Householder

H.C. D. Curtis

DATE Sept. 29, 1986

ROUTE S.R. 576

R.C. \_\_\_\_\_

WEATHER Warm

COUNTY Williams

\_\_\_\_\_

TEMP. ± 80°

TOWNSHIP Superior

\_\_\_\_\_

SECTION 35

T \_\_\_\_\_ R \_\_\_\_\_

TYPE MONUMENT P.K. Nail/washer

ON SURFACE - BELOW Surface

LEFT - Co. PAV'T. - RIGHT Co. Pavt.

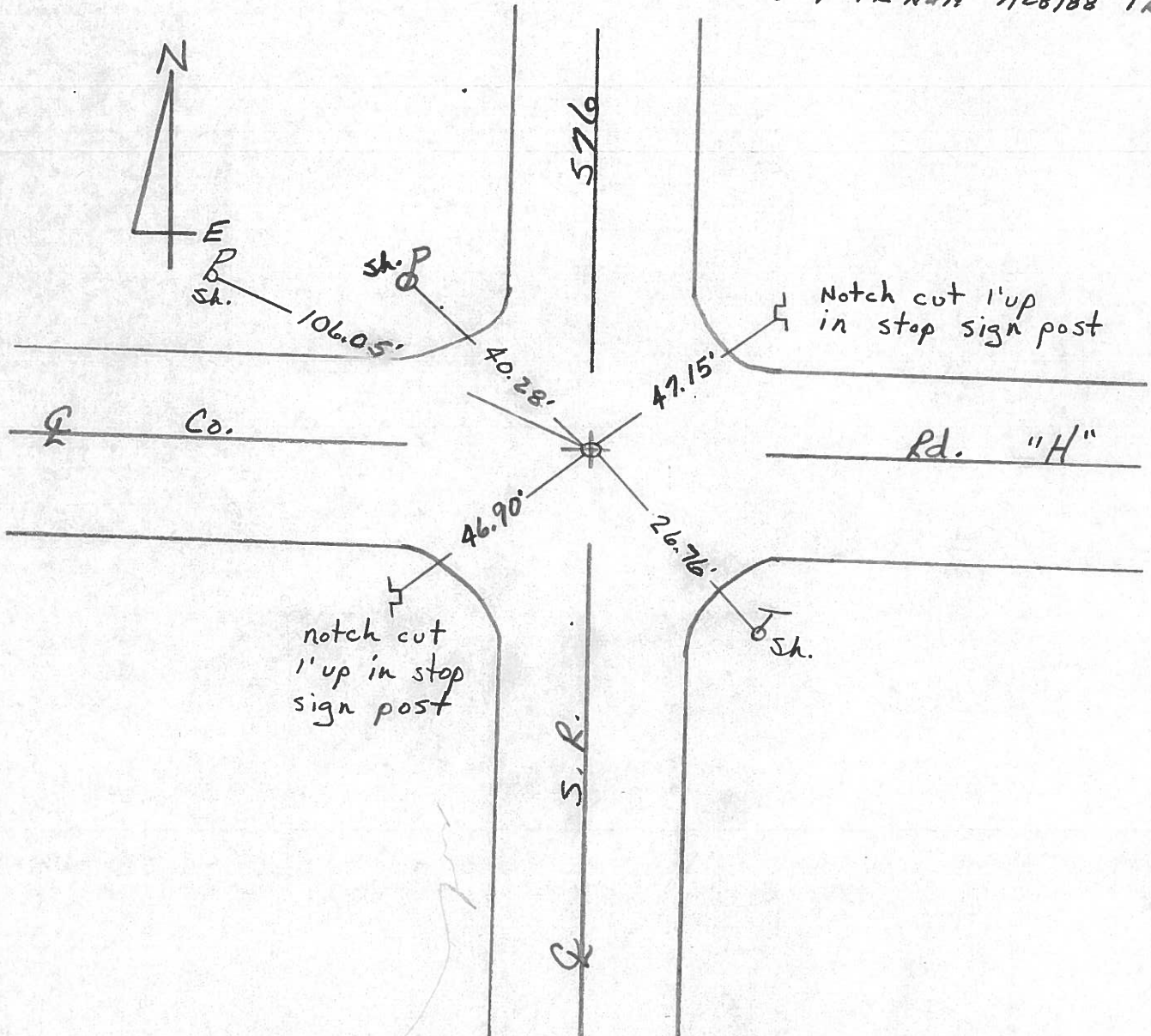
TO EDGE PAVEMENT

S.L.M. 371 + 96

27	27
34	35



*Set PK Nail 7/28/88 IRS*



County Williams S.R. 576

Date 1-20-83

Township SUPERIOR

Weather P. CLEAR

Section 35

Temp. +20°

T1N, R2E

Personnel HOFFMAN

27	26
34	35



#15

CREW

\_\_\_\_\_

\_\_\_\_\_

\_\_\_\_\_

Fd 1"  $\square$  BOLT, 1/2" Below Surface

S.L.M. 371 + 99

1.0' RT. of PAUT SR576

1.3' S. of & PAUT Rd "H"

SET P.K./WASHER  
 6/16/83  
 J.H.

SET Shi S/S

Fd Shi S/S

106.07

40.26

& PAUT

47.16

Co. Rd "H"

CUT NOTCH 1' up cor. of POST FOR STOP SIGN

46.93

26.59

CUT NOTCH 1' up cor. of POST FOR STOP SIGN

Fd Shi NW/S

& PAUT

County Williams S.R. 576

Date 19 Aug. 80

Township Supperion

Weather Foggy

Section 26-27-34-35

Temp. 65°

T\_N, R\_E

Personnel J. Stone  
R. Michalak  
P. Neuse  
D. Curtis

27	26
34	35



REF. NO. 15

