

O.D.O.T. DISTRICT 2 SURVEY OFFICE

PERSONNEL

REFERENCE NO. 16-A SHEET 11 OF 19

NOTES J. Housholder

H.C. D. Curtis

R.C. _____

DATE Sept. 29, 1986

WEATHER WARM

TEMP. +83°

ROUTE S.R. 576

COUNTY Williams

TOWNSHIP Superior

SECTION 23

T. _____ R. _____

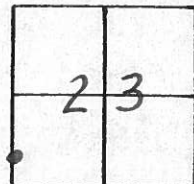
TYPE MONUMENT P.K. Nail

ON SURFACE - BELOW Surface

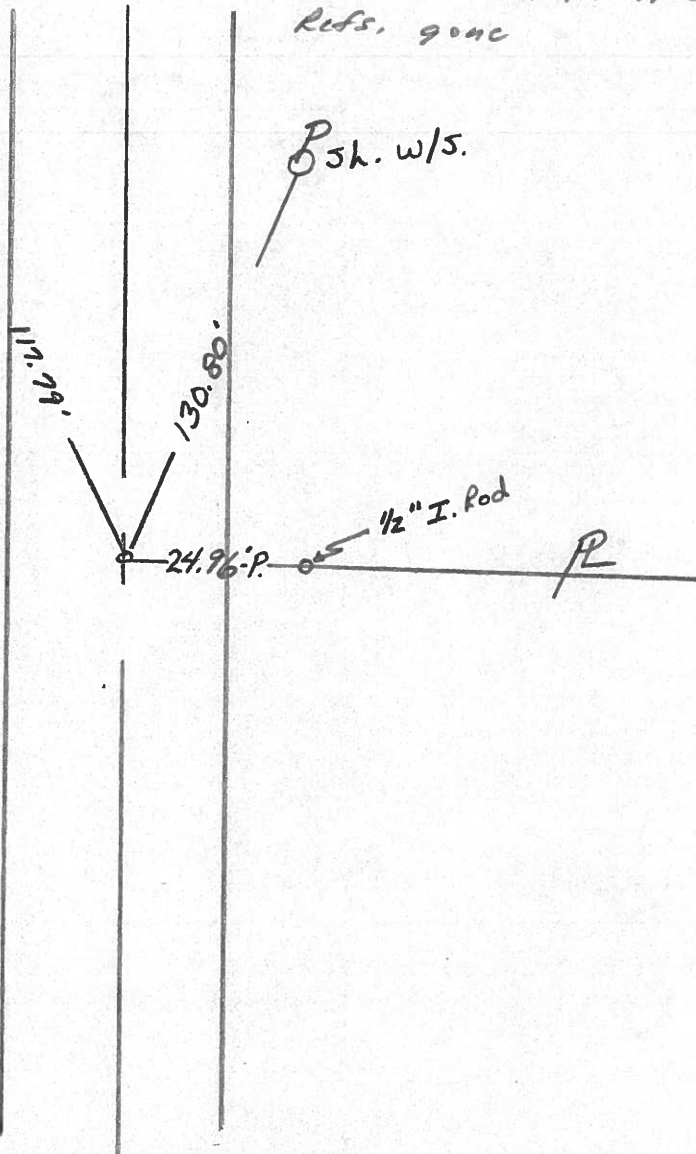
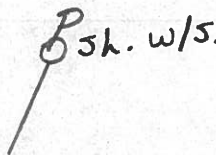
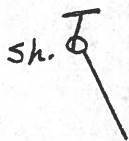
LEFT - & PAV'T. - RIGHT .5' Left

TO _____ EDGE PAVEMENT

S.L.M. 432 + 50



*PK Nail was used to set P/L
Lost in Const. 7/28/88 125
Refs. gone*



OD.O.T. DISTRICT 2 SURVEY OFFICE

SHEET _____ OF _____

County Williams S.R. 576

Date 1-20-83

Township SUPERIOR

Weather P. CLEAR

Section 23

Temp. +20°

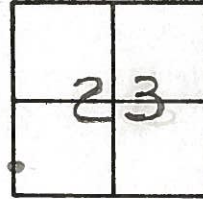
T1N, R2E

Personnel HOFFMANN

&

CREW

#16-A



Fd P.K. @ surface; ORIGIN UNKNOWN

S.L.M. 432 + 55

0.5' LT. of & PAUT

9.2' TO E. EP.

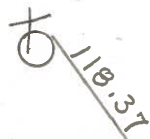
9.7' TO W. EP.

SET P.K. NAIL

6/16/83

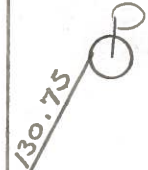
J.H.

Set shi E/S



S.R. 576

& PAUT



Set shi w/S



1/2" I. ROD

