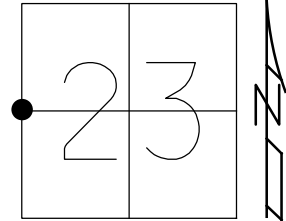


O.D.O.T. DISTRICT 2 SURVEY OFFICE (USE ONLY)

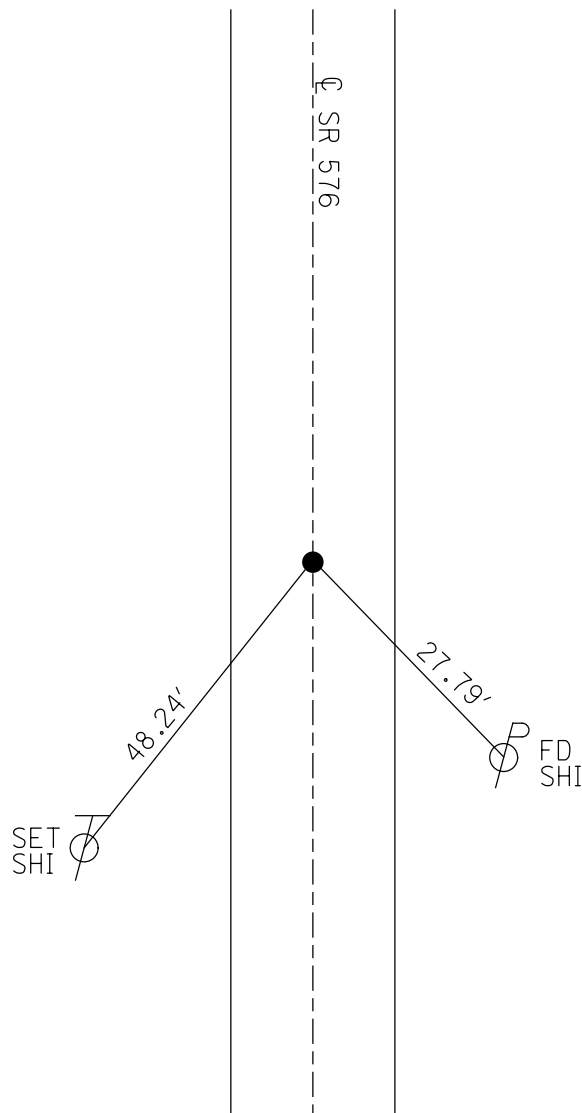
PERSONNEL _____ REFERENCE NO. 16 B SHEET 21 OF 29
 NOTES NIESE DATE 3-31-21 ROUTE SR 576
 H.C. AUBLE WEATHER WINDY COUNTY WILLIAMS
 R.C. NIESE TEMP. 70° F TOWNSHIP SUPERIOR
 DWG BY AUBLE PID PAVETRAN SECTION 23
 T 7 N R 2 E

TYPE MONUMENT MAG/WASHER
 ON SURFACE - ~~BELOW~~ ON _____
 OFFSET ϕ PAVEMENT 1.2' ~~LT~~ : RT
8.2' TO RT EDGE PAVEMENT
 STATION: 448+83.63



HORZ.DATUM: NAD83 2011 GEOID: NAVD88 2018
 GRID: NORTHING: 693068.598 EASTING: 1390174.935

RECORD:
 SET MAG/WASHER
 8-11-11, DCH
 FD MAG/WASHER
 REFB16
 3-31-21
 9-20-21, DSA



O.D.O.T. DISTRICT 2 SURVEY OFFICE USE ONLY

PERSONNEL _____

REFERENCE NO. 16-B

SHEET 19 OF 27

NOTES ROUSOS

DATE 6-16-11

ROUTE S.R. 576

H.C. ROUSOS

WEATHER CLOUDY

COUNTY WILLIAMS

R.C. HOMAN

TEMP. 65°

TOWNSHIP SUPERIOR

SECTION 23

T 7 N R 2 E

TYPE MONUMENT PK/WASHER

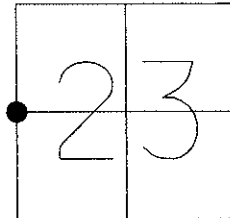
ON SURFACE - ~~BELOW~~ ON

~~LEFT~~ C PAV'T - RIGHT 1.2' RT

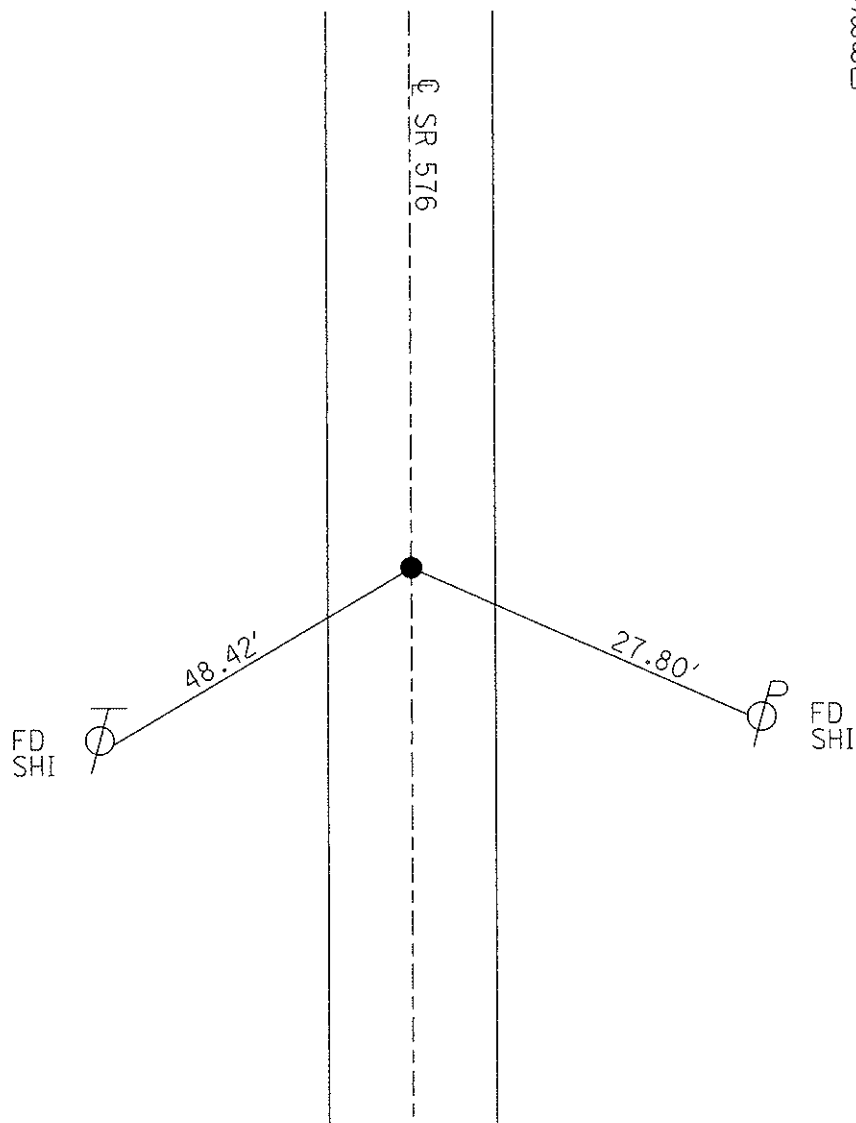
8.2 TO RT EDGE PAVEMENT

S.L.M. 448+84

Grid: Northing: 693068.590 Easting: 1390174.932



SET MAG NAIL
& WASHER
8-11-11
DCH



O.D.O.T. DISTRICT 2 SURVEY OFFICE

PERSONNEL

REFERENCE NO. 16-B

SHEET 9 OF 17

NOTES CANTERBURY

H.C. ROUSOS

DATE 5-27-97

ROUTE S.R. #576

R.C. BARNHISEL III

WEATHER SUNNY

COUNTY WILLIAMS

TEMP. +65°

TOWNSHIP SUPERIOR

SECTION 23

T 7 N R 2 E

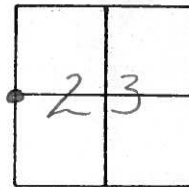
TYPE MONUMENT PK/WASHER

ON SURFACE - ~~BELOW~~ yes

~~LEFT~~ - PAV'T. - RIGHT 1.2'

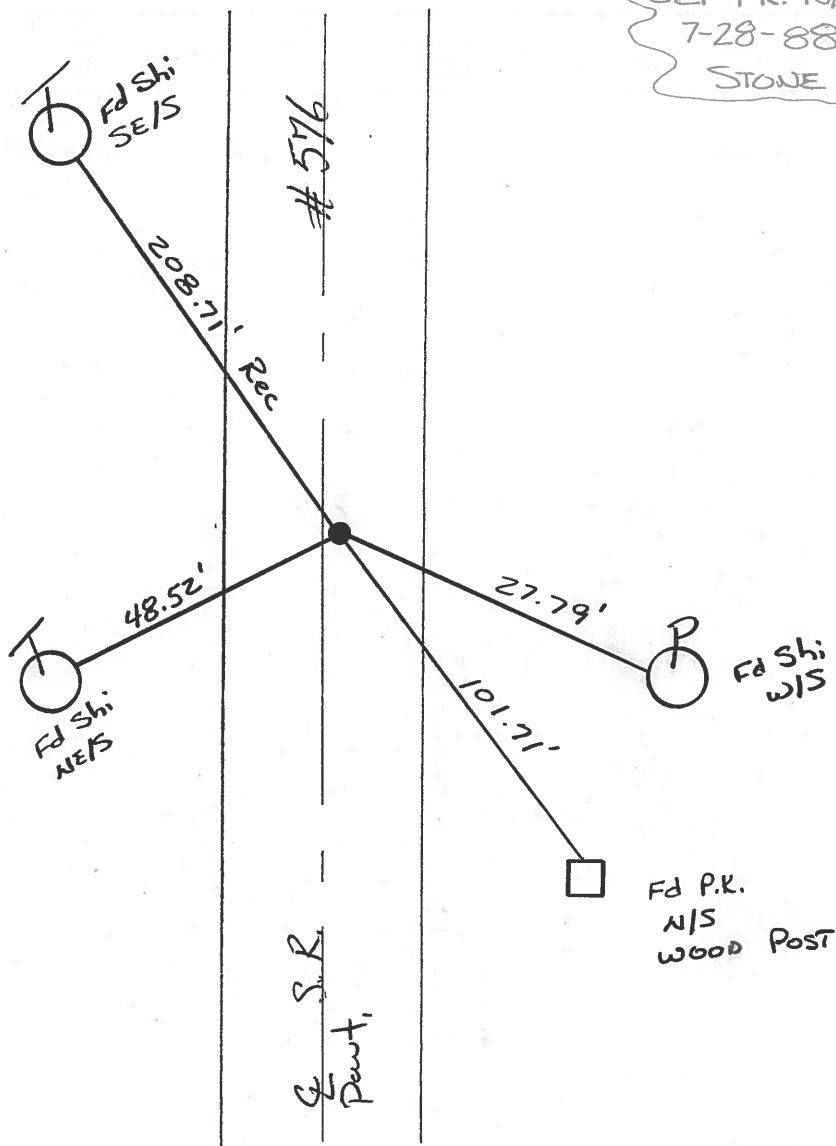
8.2' TO RT EDGE PAVEMENT

S.L.M. 450+38



RESET PK/WASHER
 8-20-97
 MRC

SET PK. NAIL
 7-28-88
 STONE



O.D.O.T. DISTRICT 2 SURVEY OFFICE

PERSONNEL _____

REFERENCE NO. 16-B

SHEET 12 OF 19

NOTES D. CURTIS

H.C. J. HOUSEHOLDER

DATE 9-30-86

ROUTE 576

R.C. _____

WEATHER CLOUDY

COUNTY WILLIAMS

TEMP. 70°

TOWNSHIP SUPERIOR

SECTION 23

T. 7 N R. 2 E

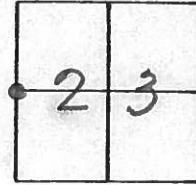
TYPE MONUMENT P.K. NAIL

ON SURFACE - BELOW 1" BELOW

LEFT - € PAV'T. - RIGHT 1.6' RT. € PAVMT

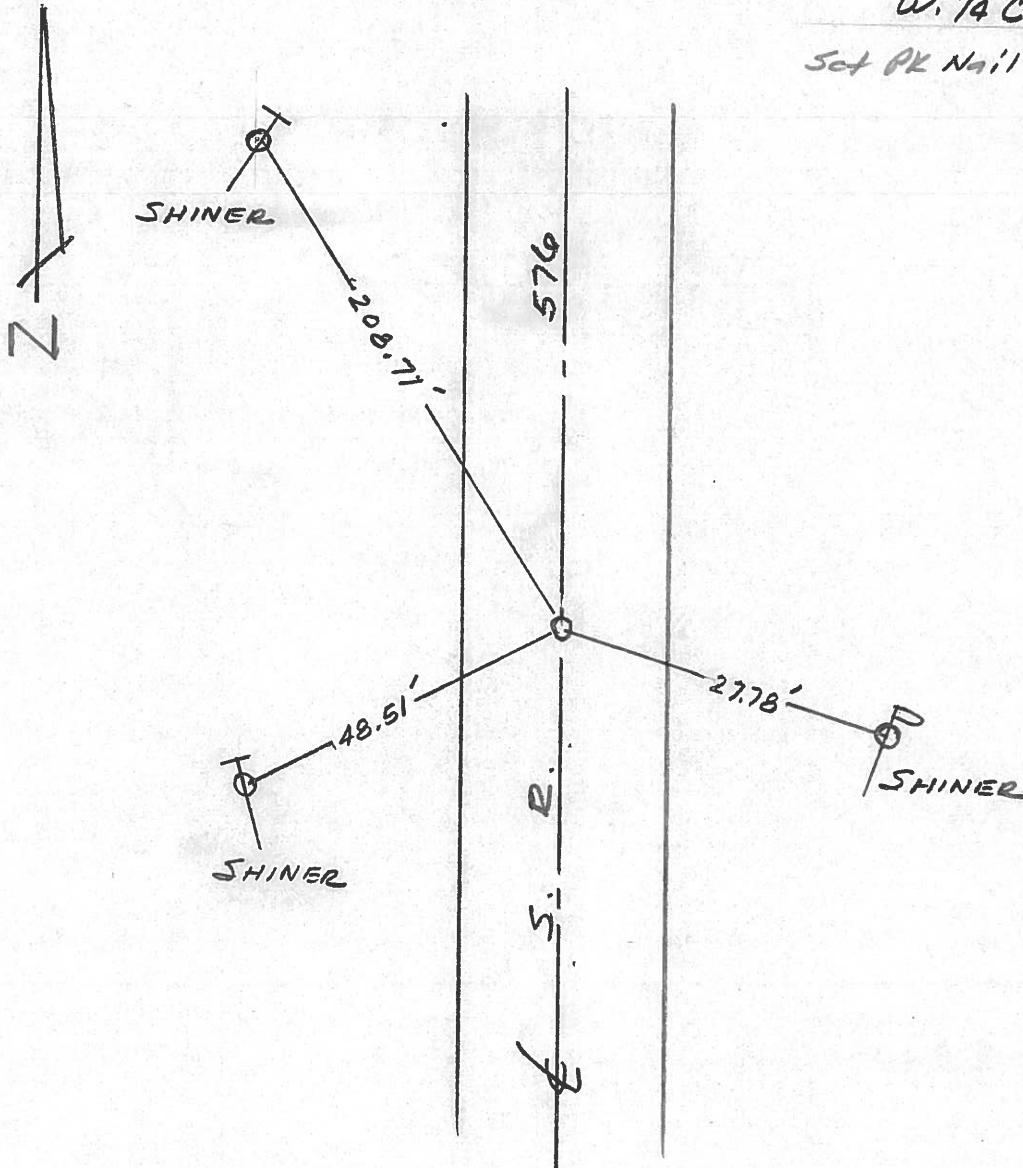
TO EDGE PAVEMENT

S.L.M. 449+98



W. 1/4 COR. SEC. 23

Set PK Nail 7128/88 1RS



County Williams S.R. 576

Date 7-26-84

Township Springfield

Weather Cloudy

Section 23

Temp. +75°

TZN, R2E

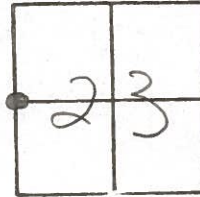
Personnel LOFFMAN

LOEHRKE

HOUSEHOLDER R.C.

BARNHISEL H.C.

ENSIGN



Fd 1/2" I.P.I.P. = 1 1/2" Below Surface

SLM = 450 ± 0.2

1.6' RT. of & Pavt

7.4' to RT. E.P.

8.5' to LT. E.P.

~~16B~~
16B

Fd FROM Survey 3-1976
 BY WALTER Schelling
 Vol 7R pg. 273

