

O.D.O.T. DISTRICT 2 SURVEY OFFICE (USE ONLY)

PERSONNEL

REFERENCE NO. 18

SHEET 23 OF 29

NOTES NIESE
 H.C. AUBLE
 R.C. NIESE

DATE 3-31-21
 WEATHER WINDY
 TEMP. 70° F

ROUTE SR 576
 COUNTY WILLIAMS
 TOWNSHIP SUPERIOR
 SECTION 14
 T 7 N R 2 E

DWG BY AUBLE PID PAVETRAIN

TYPE MONUMENT MAG/WASHER

ON SURFACE - ~~BELOW~~ ON

OFFSET Q PAVEMENT ON LT : RT

10.4' TO RT EDGE PAVEMENT

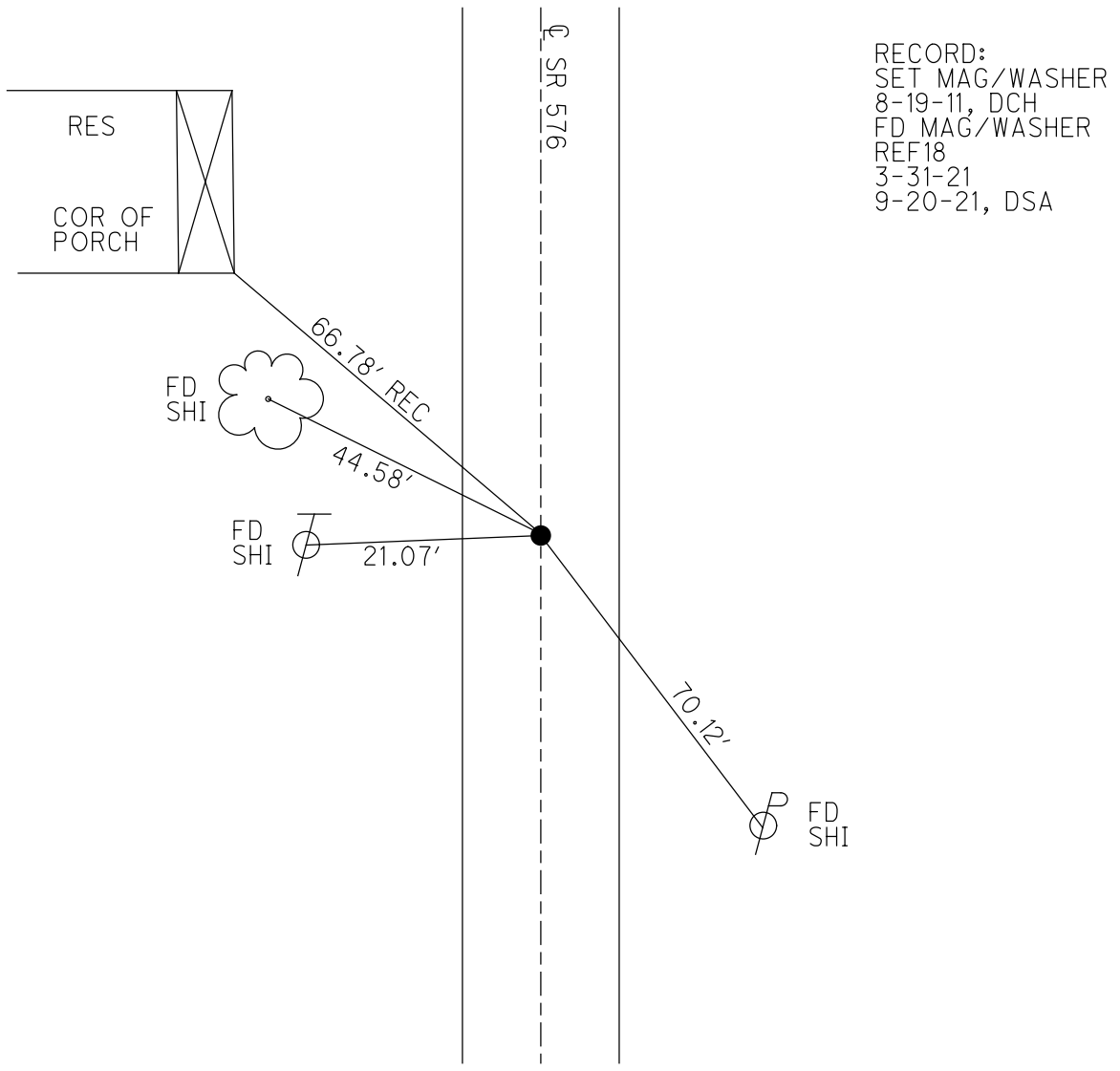
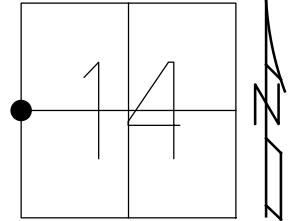
STATION: 503+24.26

HORZ.DATUM: NAD83 2011

GEOID: NAVD88 2018

GRID: NORTHING: 698508.044

EASTING: 1390284.949



RECORD:
 SET MAG/WASHER
 8-19-11, DCH
 FD MAG/WASHER
 REF18
 3-31-21
 9-20-21, DSA

O.D.O.T. DISTRICT 2 SURVEY OFFICE USE ONLY

PERSONNEL _____ REFERENCE NO. 18 SHEET 21 OF 27

NOTES ROUSOS DATE 6-16-11 ROUTE S.R. 576

H.C. ROUSOS WEATHER CLOUDY COUNTY WILLIAMS

R.C. HOMAN TEMP. 70° TOWNSHIP SUPERIOR

SECTION 14

T 7 N R 2 E

TYPE MONUMENT _____ PK _____

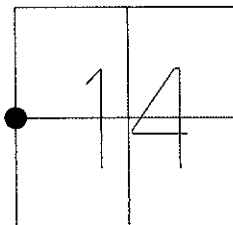
ON SURFACE - ~~BELOW~~ _____ ON _____

~~LEFT~~ - Q PAV'T - ~~RIGHT~~ _____ ON _____

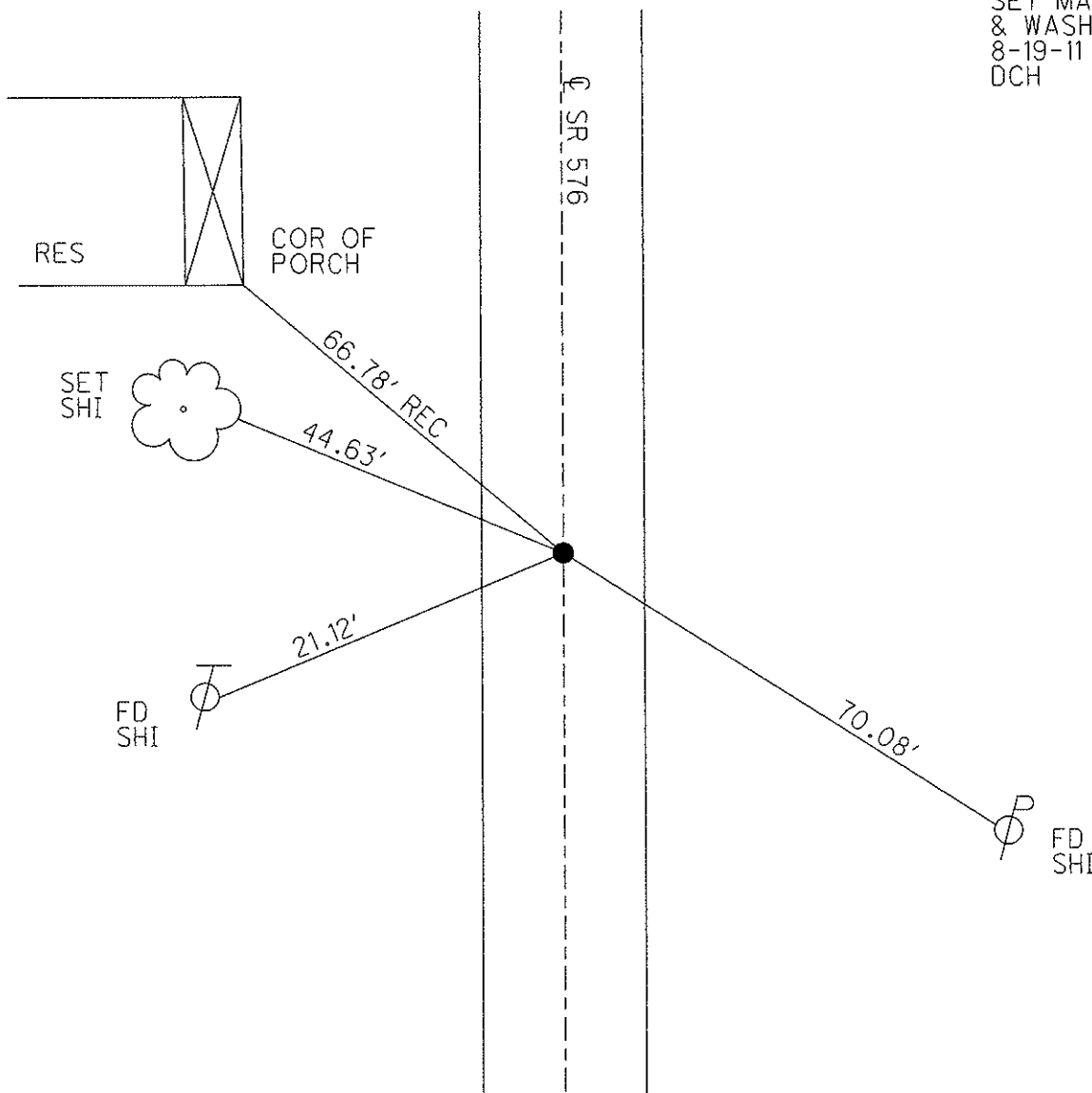
10.4' TO RT EDGE PAVEMENT

S.L.M. 503+24

Grid: Northing: 698508.095 Easting: 1390284.925



SET MAG NAIL
& WASHER
8-19-11
DCH



O.D.O.T. DISTRICT 2 SURVEY OFFICE

PERSONNEL

REFERENCE NO. 18

SHEET 11 OF 17

NOTES CANTERBURY

H.C. Rousos

DATE 5-27-97

ROUTE S.R. #576

R.C. BARNHISEL 14

WEATHER SUNNY

COUNTY WILLIAMS

TEMP. +65°

TOWNSHIP SUPERIOR

SECTION 14

T 7 N R 2 E

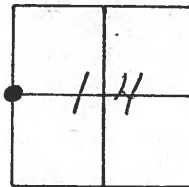
TYPE MONUMENT Sm RR Spk

ON SURFACE - ~~BELOW~~ YES

~~LEFT - & PAV'T. - RIGHT~~ YES

10.4 TO RT EDGE PAVEMENT

S.L.M. 504+79

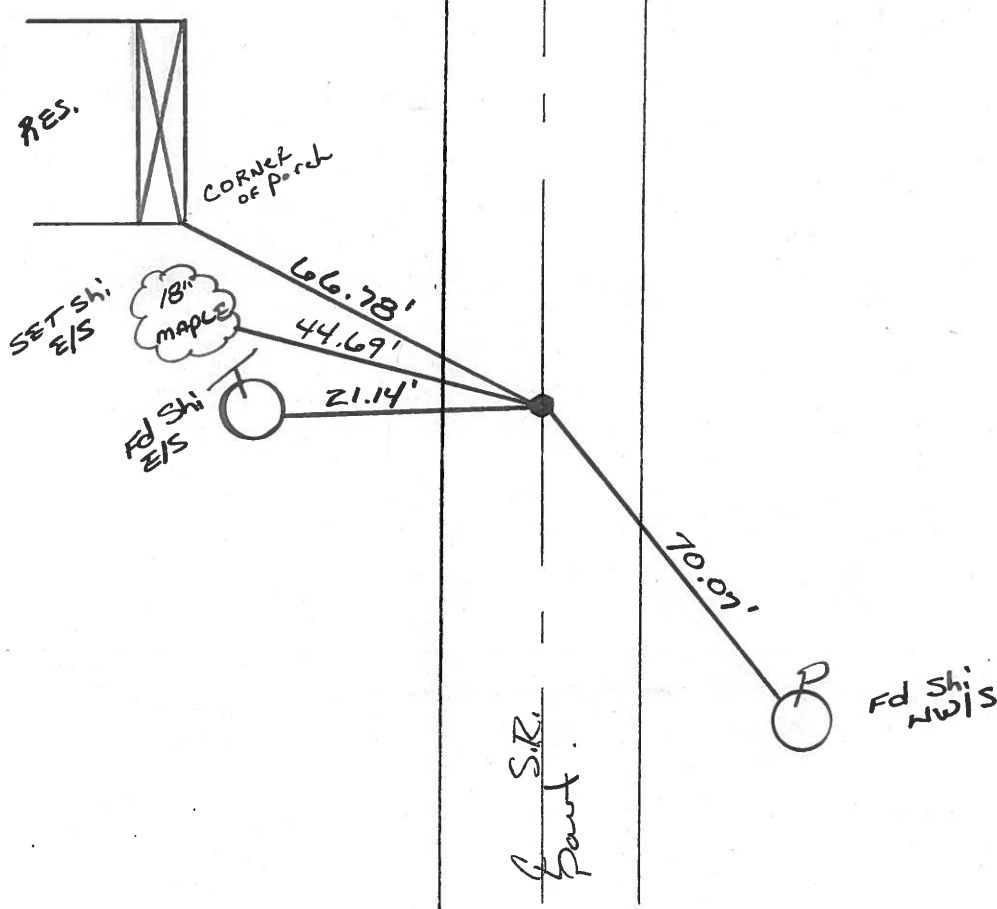


Reset PK/WASHER

B-20-97
MRC

SET SMALL R.R. SPK.

7-28-88
STONE



O.D.O.T. DISTRICT 2 SURVEY OFFICE

PERSONNEL _____

REFERENCE NO. 18

SHEET 14 OF 19

NOTES D. CURTIS

H.C. J. HOUSEHOLDER

DATE 9-30-86

ROUTE 576

R.C. _____

WEATHER CLOUDY

COUNTY WILLIAMS

TEMP. 70°

TOWNSHIP SUPERIOR

SECTION 14

T _____ R _____

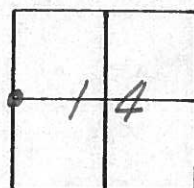
TYPE MONUMENT 1" I. PIPE

ON SURFACE - BELOW 1 1/2" BELOW

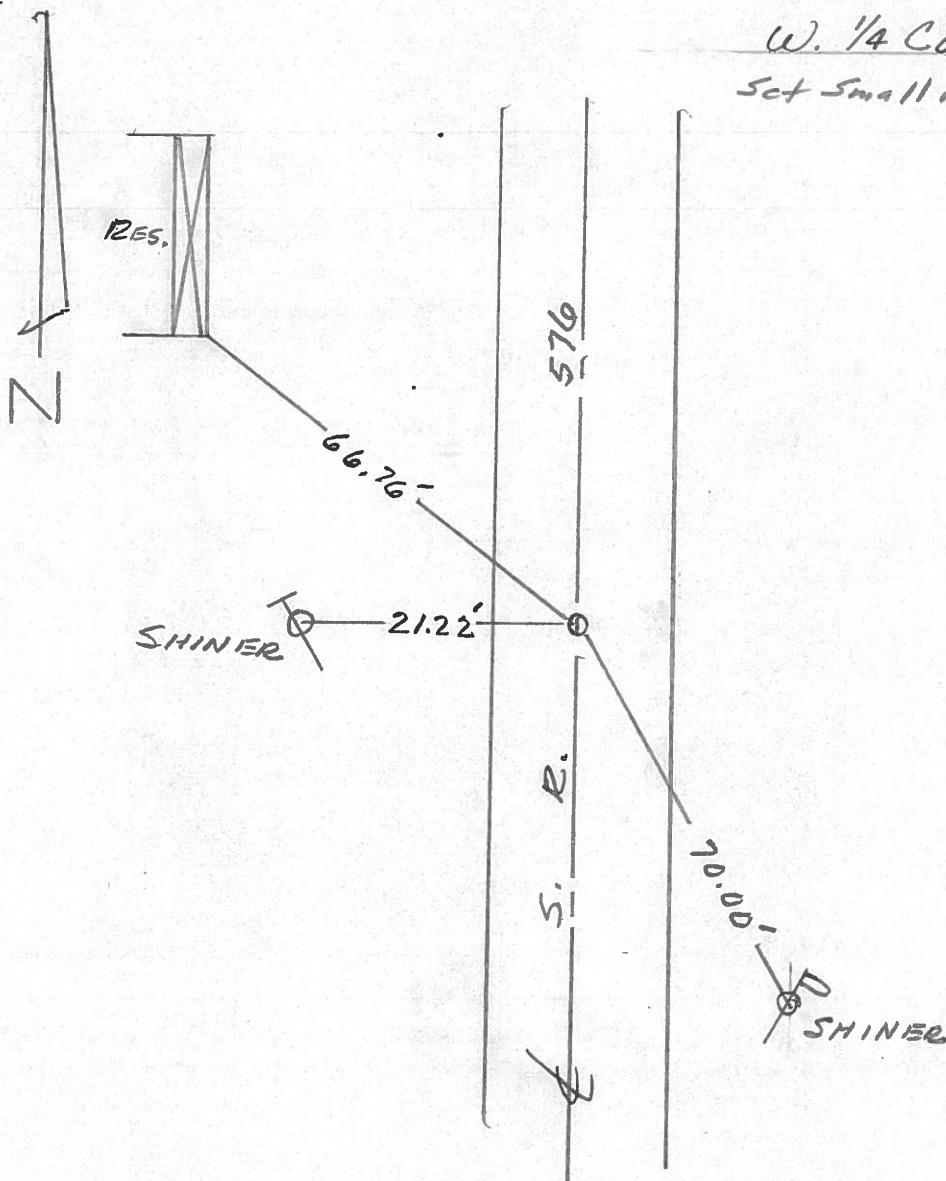
LEFT - ☉ PAV'T. - RIGHT ☉ PAVM'T

_____ TO _____ EDGE PAVEMENT

S.L.M. 504 + 38



W. 1/4 COR. SEC. 14
Set Small RR Spt. 7/28/80 IRS



County Williams S.R. 576

Date 19 Aug. 80

Township Superior

Weather Cloudy

Section 14

Temp. 70°

T N, R E

Personnel J. Stone

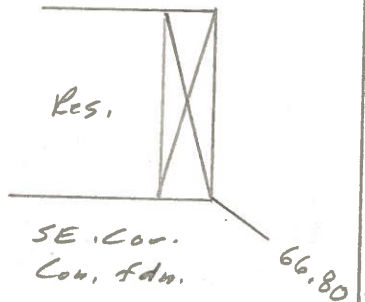
R. Michalak

P. Neuser

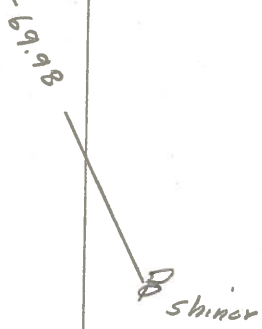
D. Curtis



REF. NO. 18



ESR # 576.7



Fd. PK Nail To Surface
W'14 Cor. Sec. 14
10.3' To E. edge pt.
9.2' To W. edge pt.

County WILLIAMS S.R. 576

Date 6-19-79

Township SUPERIOR

Weather CLEAR

Section E 1/4 Post Sec. 15

Temp. +80°

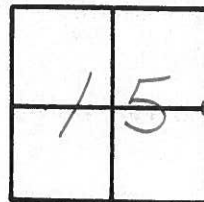
T N, R E

Personnel BURNSIDE

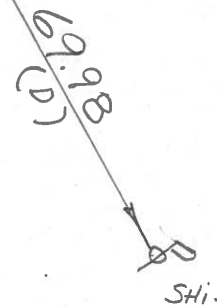
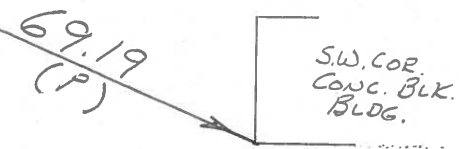
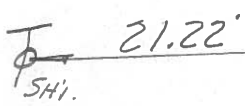
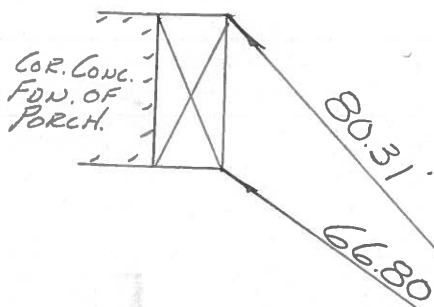
SMITH

KNAPE

MEAD



(18)



FD. P.K. @ SURFACE
& IN CTR. PAVE.

COMPUTATION SHEET

STATE OF OHIO - DEPARTMENT OF HIGHWAYS - BUREAU OF LOCATION AND DESIGN COLUMBUS, OHIO

BY Louys DATE 6-28-66 NO. OF SHEETS

COUNTY W.Li. SECTION 1/2 m S. of Brown Rd

DIV. NO. 2 S.R. 526 U.S.R. I.R.

SUBJECT OF THIS SHEET Control Point

18



Cor of House Found

C&P # 5-76

Sta 498+41.32

$\Delta = 0^{\circ} 00' 5''$ RT

Found I. Pin

Shiner E. side P.P.

1/4 Cor 15/14?

N.W. Cor. Bldg Found.

1/2 mi ± S. of Sta 499+41.32 Found 5/8" Iron Rod.

N.E. Cor. Sec #22

Superior Twp.