

O.D.O.T. DISTRICT 2 SURVEY OFFICE (USE ONLY)

PERSONNEL

REFERENCE NO. 18 B

SHEET 25 OF 29

NOTES NIESE DATE 3-31-21
 H.C. AUBLE WEATHER WINDY
 R.C. NIESE TEMP. 70° F

ROUTE SR 576
 COUNTY WILLIAMS
 TOWNSHIP SUPERIOR
 SECTION 14

DWG BY AUBLE PID PAVETRAIN

T 7 N R 2 E

TYPE MONUMENT MAG/WASHER

ON SURFACE - BELOW ON

OFFSET 0.4' RT : RT

9.1' TO RT EDGE PAVEMENT

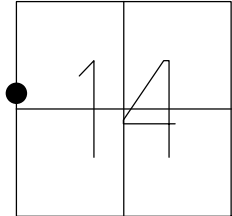
STATION: 517+46

HORZ.DATUM: NAD83 2011

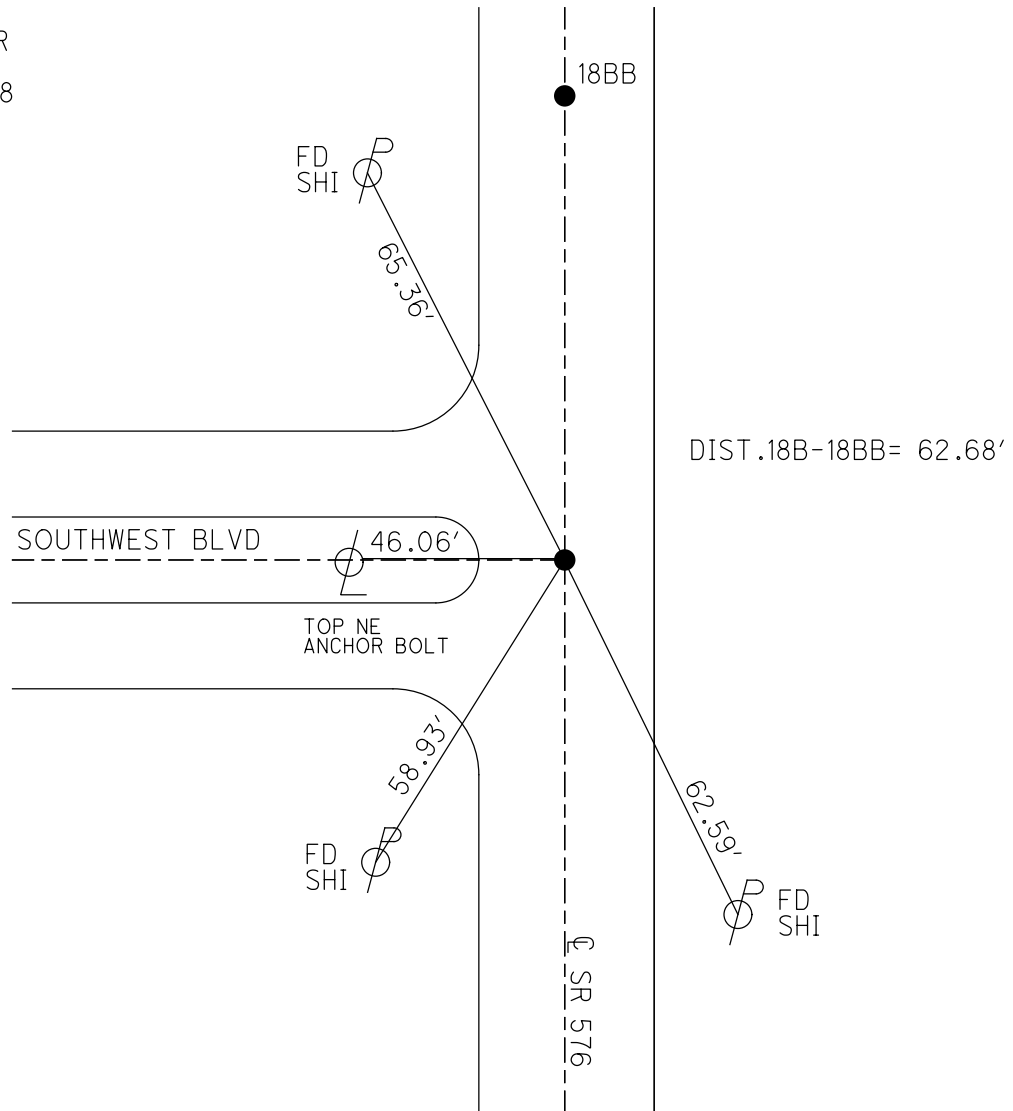
GEOID: NAVD88 2018

GRID: NORTHING: 699775.202

EASTING: 1390313.353



SET MAG/WASHER
 8-19-11, DCH
 FD MAG/W REFB18
 3-31-21, DSA
 FD 9-20-21, DSA



O.D.O.T. DISTRICT 2 SURVEY OFFICE USE ONLY

PERSONNEL

REFERENCE NO. 18-B

SHEET 23 OF 27

NOTES ROUSOS

DATE 6-16-11

ROUTE S.R. 576

H.C. ROUSOS

WEATHER CLOUDY

COUNTY WILLIAMS

R.C. HOMAN

TEMP. 70°

TOWNSHIP SUPERIOR

SECTION 14

T 7 N R 2 E

TYPE MONUMENT PK NAIL

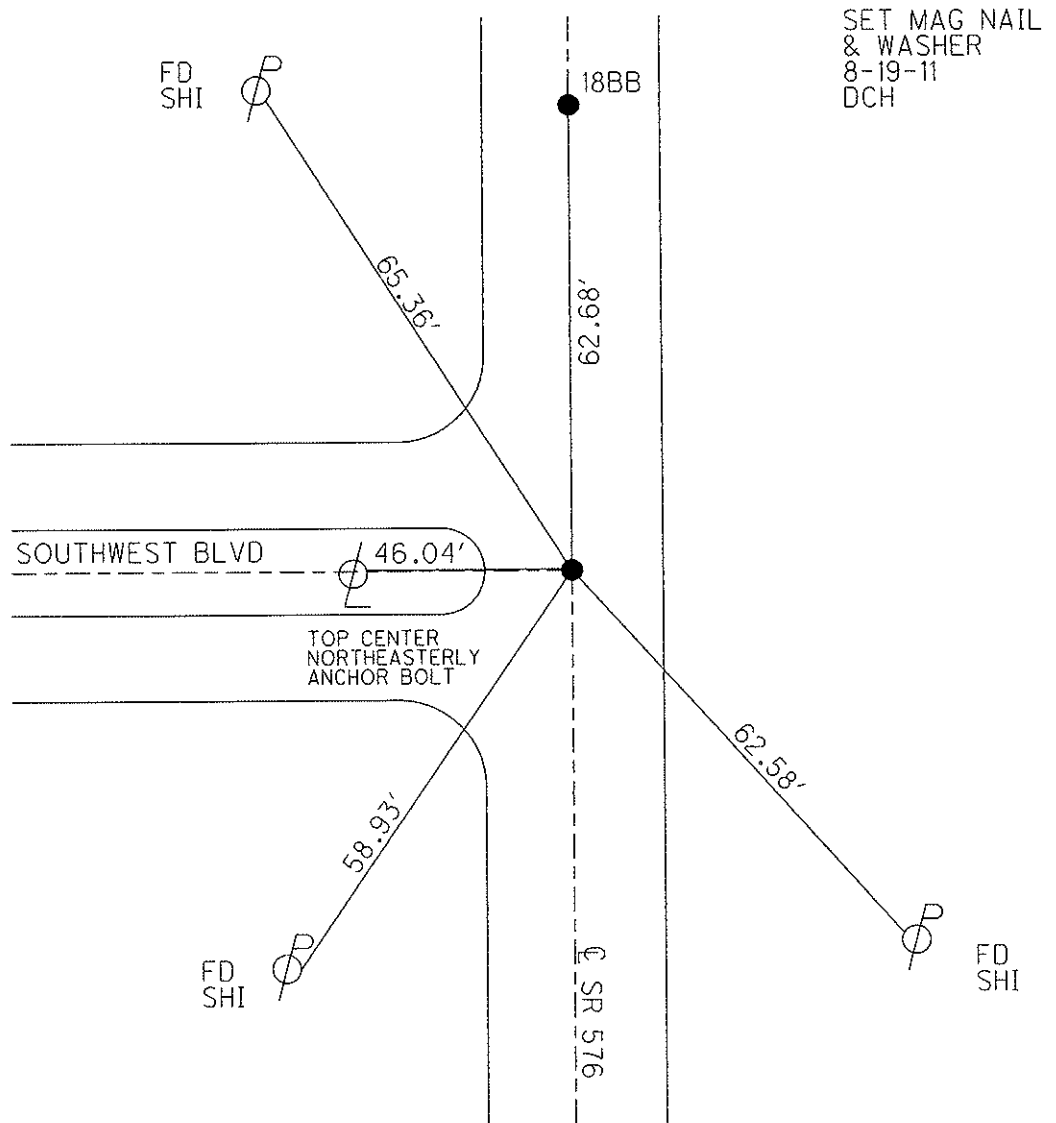
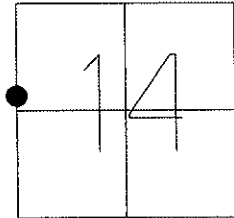
ON SURFACE - ~~BELOW~~ ON

~~LEFT C PAV'T~~ - RIGHT 0.4' RT

9.1 TO RT EDGE PAVEMENT

S.L.M. 517+46

Grid: Northing: 699775.253 Easting: 1390313.264



O.D.O.T. DISTRICT 2 SURVEY OFFICE

PERSONNEL _____

REFERENCE NO. 18-B

SHEET 13 OF 17

NOTES CANTERBURY

H.C. ROUSOS

DATE 5-27-97

ROUTE S.R. #576

R.C. BARNAISEL III

WEATHER SUNNY-WINDY

COUNTY WILLIAMS

TEMP. +65°

TOWNSHIP SUPERIOR

SECTION 14

T 7 N R 2 E

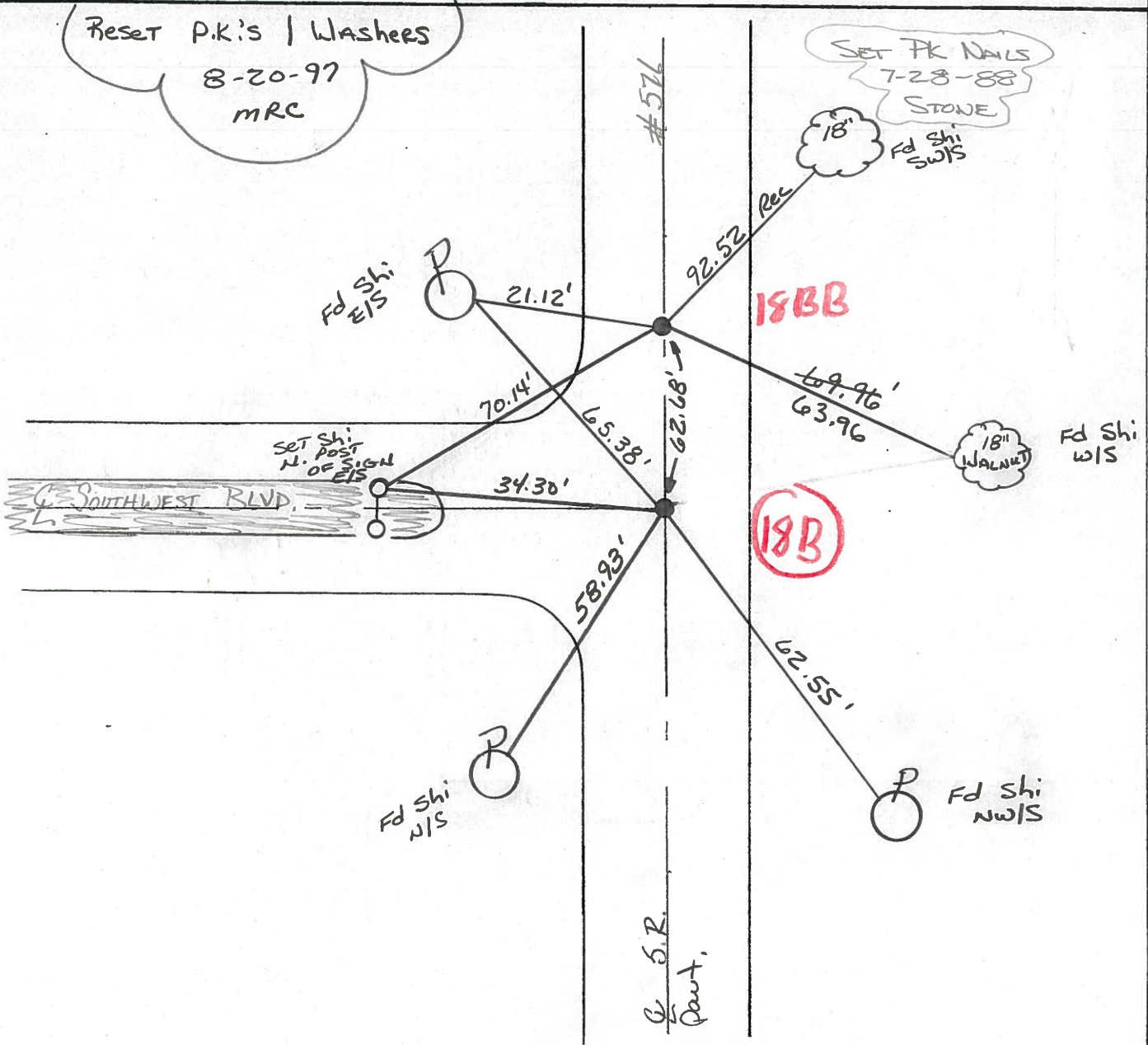
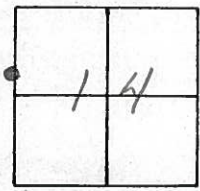
TYPE MONUMENT P.K. NAILS

ON SURFACE - BELOW YES

~~LEFT~~ - Q PAV'T. - RIGHT 0.4 BOTH

9.1 TO RT EDGE PAVEMENT

S.L.M. 517+46.44 518+09



O.D.O.T. DISTRICT 2 SURVEY OFFICE

PERSONNEL

REFERENCE NO. 18-B

SHEET 16 OF 19

NOTES 1. Stone

H.C. D. Curtis

DATE 16 Oct. 86

ROUTE SR #576

R.G. J. Hauscholder

WEATHER Cloudy

COUNTY Williams

TEMP. 420

TOWNSHIP Superior

SECTION 17

T ___ R ___

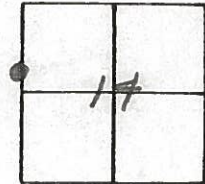
TYPE MONUMENT PK Nails (Both)

ON SURFACE - BELOW Surface

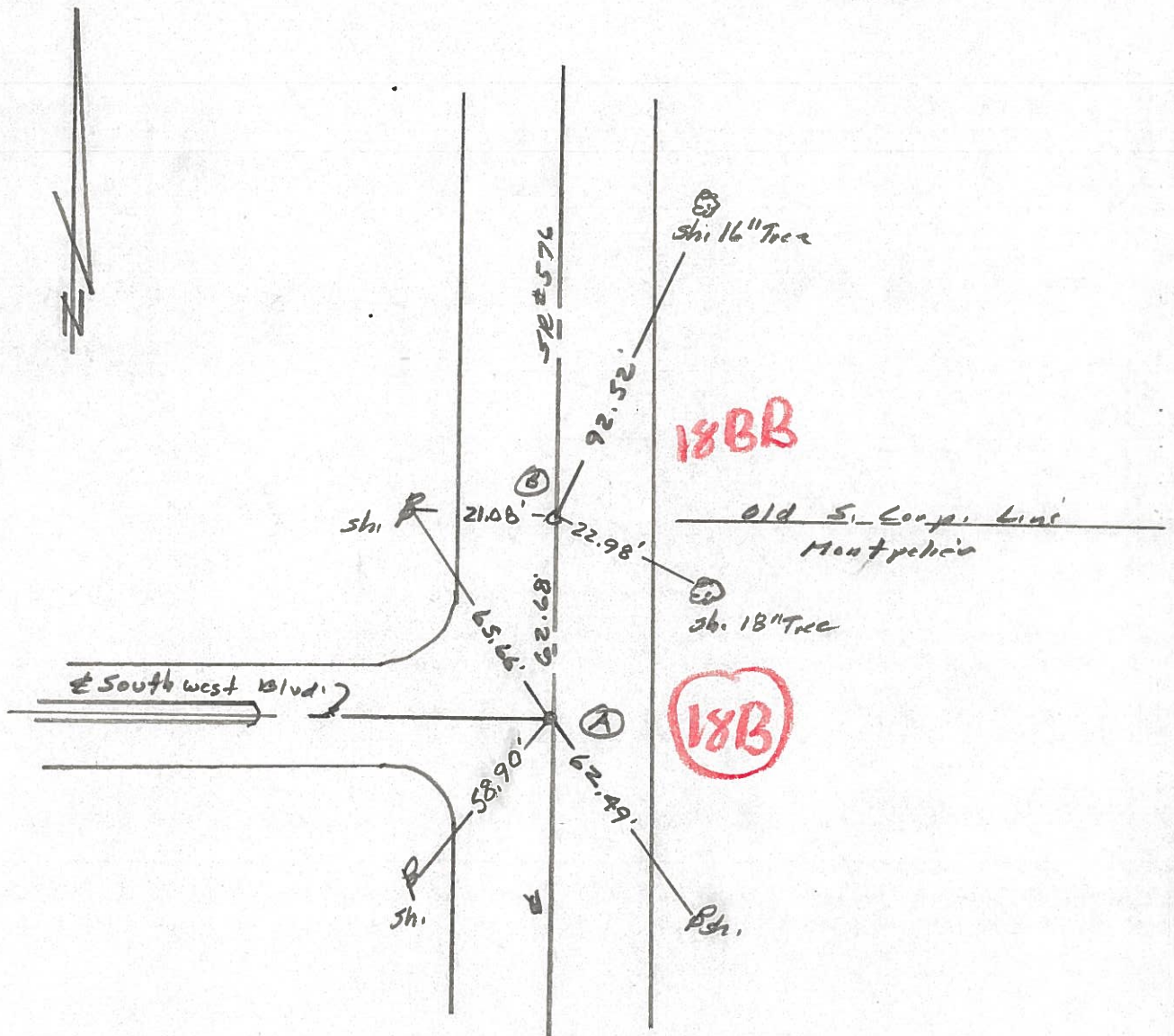
LEFT - & PAV'T. - RIGHT

TO EDGE PAVEMENT

S.L.M. (A) - 517+06 (B) - 517+68



Set PK Nails 7/28/88 IRS



County Williams S.R. 576

Date 19 Aug. 80

Township Superior

Weather Cloudy

Section 14

Temp. 70°

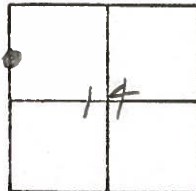
T N, R E

Personnel L. Stone

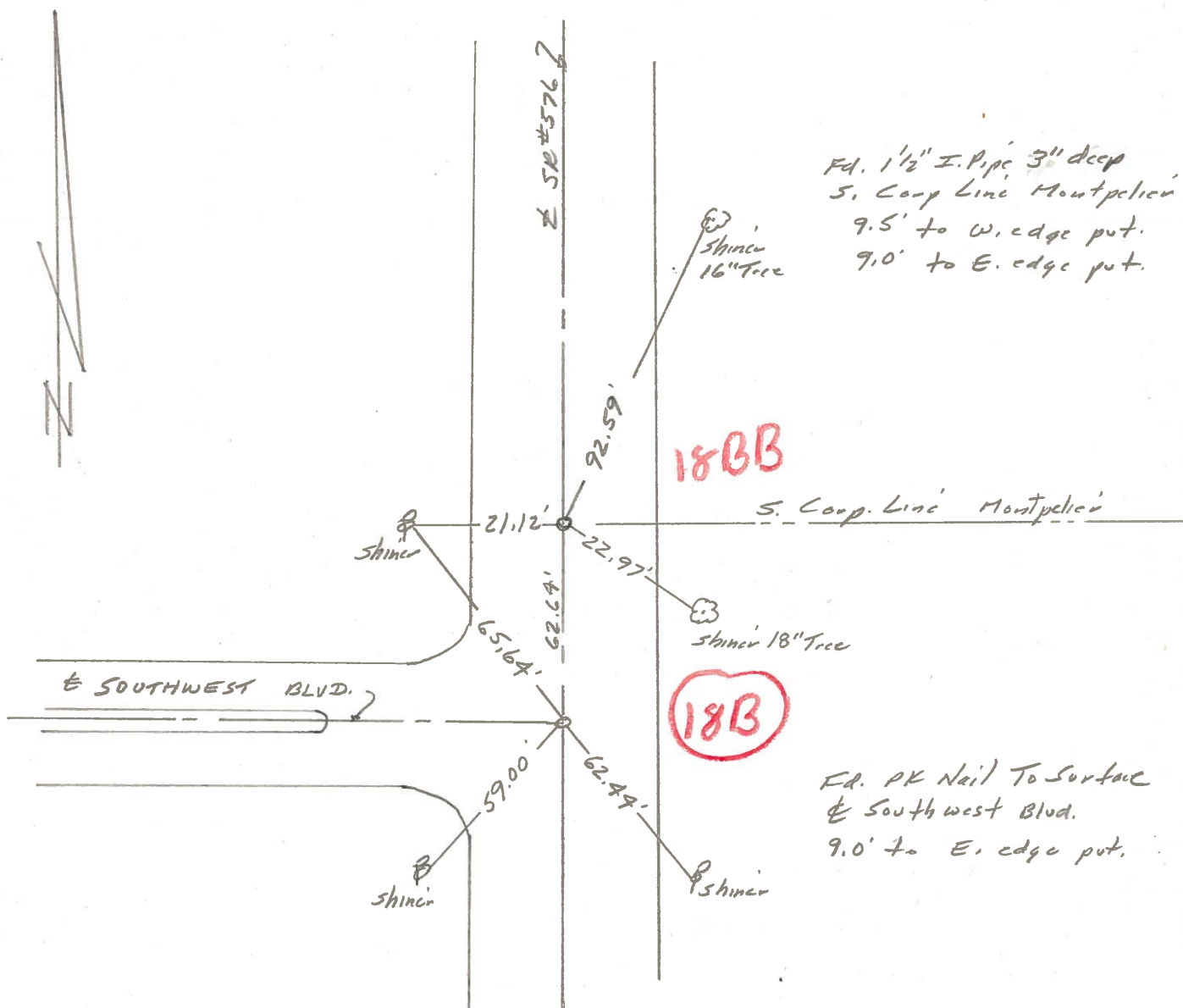
R. Michalek

P. Neoser

D. Curtis



REF. NO. **18-B**



Fd. 1 1/2" I. Pipe 3" deep
S. Coop Line Montpelier
9.5' to W. edge put.
9.0' to E. edge put.

18BB

S. Coop. Line Montpelier

18B

Fd. PK Nail To Surface
E. Southwest Blvd.
9.0' to E. edge put.