

O.D.O.T. DISTRICT 2 SURVEY OFFICE (USE ONLY)

PERSONNEL

REFERENCE NO. 18 BB

SHEET 26 OF 29

NOTES ROUSOS
 H.C. ROUSOS
 R.C. HOMAN

DATE 6/16/11
 WEATHER CLOUDY
 TEMP. 70°

ROUTE SR 576
 COUNTY WILLIAMS
 TOWNSHIP SUPERIOR
 SECTION 14
 T 7 N R 2 E

DWG BY AUBLE PID PAVETRAIN

TYPE MONUMENT P.K.NAIL

ON SURFACE - BELOW ON

OFFSET \odot PAVEMENT 0.4' LT : RT
9.1' TO RT EDGE PAVEMENT

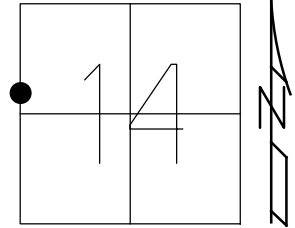
STATION: 518+08.68

HORIZ.DATUM: NAD83 2011

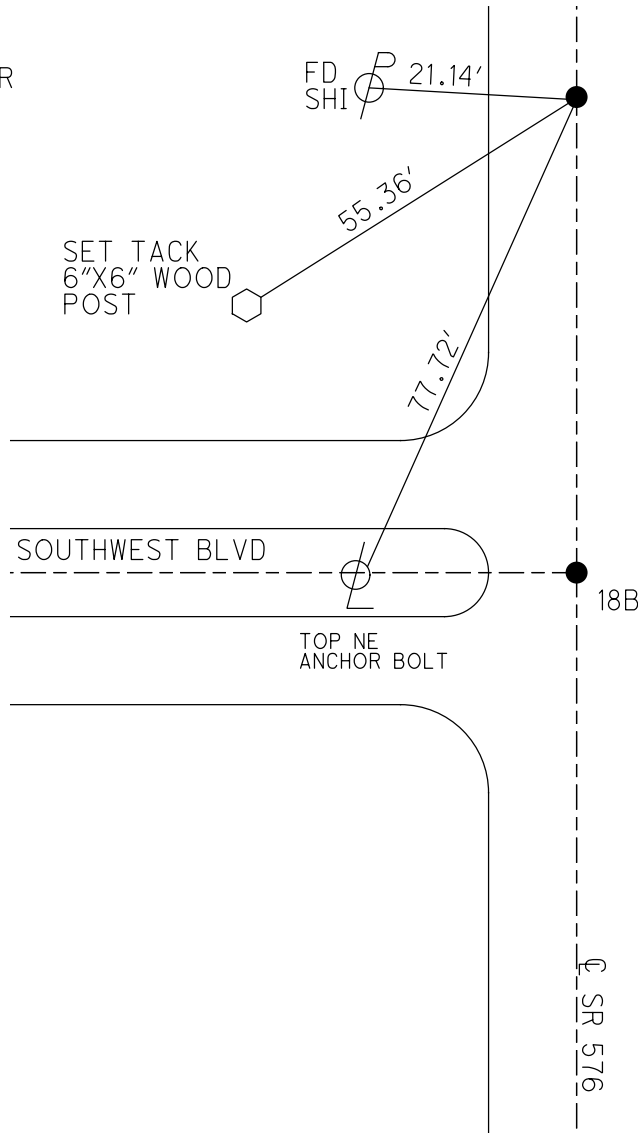
GEOID: NAVD88 2012A

GRID: NORTHING: 699775.253

EASTING: 1390313.264



RECORD:
 SET MAG/WASHER
 8-19-11, DCH
 FD MAG/WASHER
 9/20/21, DSA



DIST.18B-18BB= 62.68'

\odot SR 576

O.D.O.T. DISTRICT 2 SURVEY OFFICE USE ONLY

PERSONNEL

REFERENCE NO. 18-B

SHEET 23 OF 27

NOTES ROUSOS

DATE 6-16-11

ROUTE S.R. 576

H.C. ROUSOS

WEATHER CLOUDY

COUNTY WILLIAMS

R.C. HOMAN

TEMP. 70°

TOWNSHIP SUPERIOR

SECTION 14

T 7 N R 2 E

TYPE MONUMENT PK NAIL

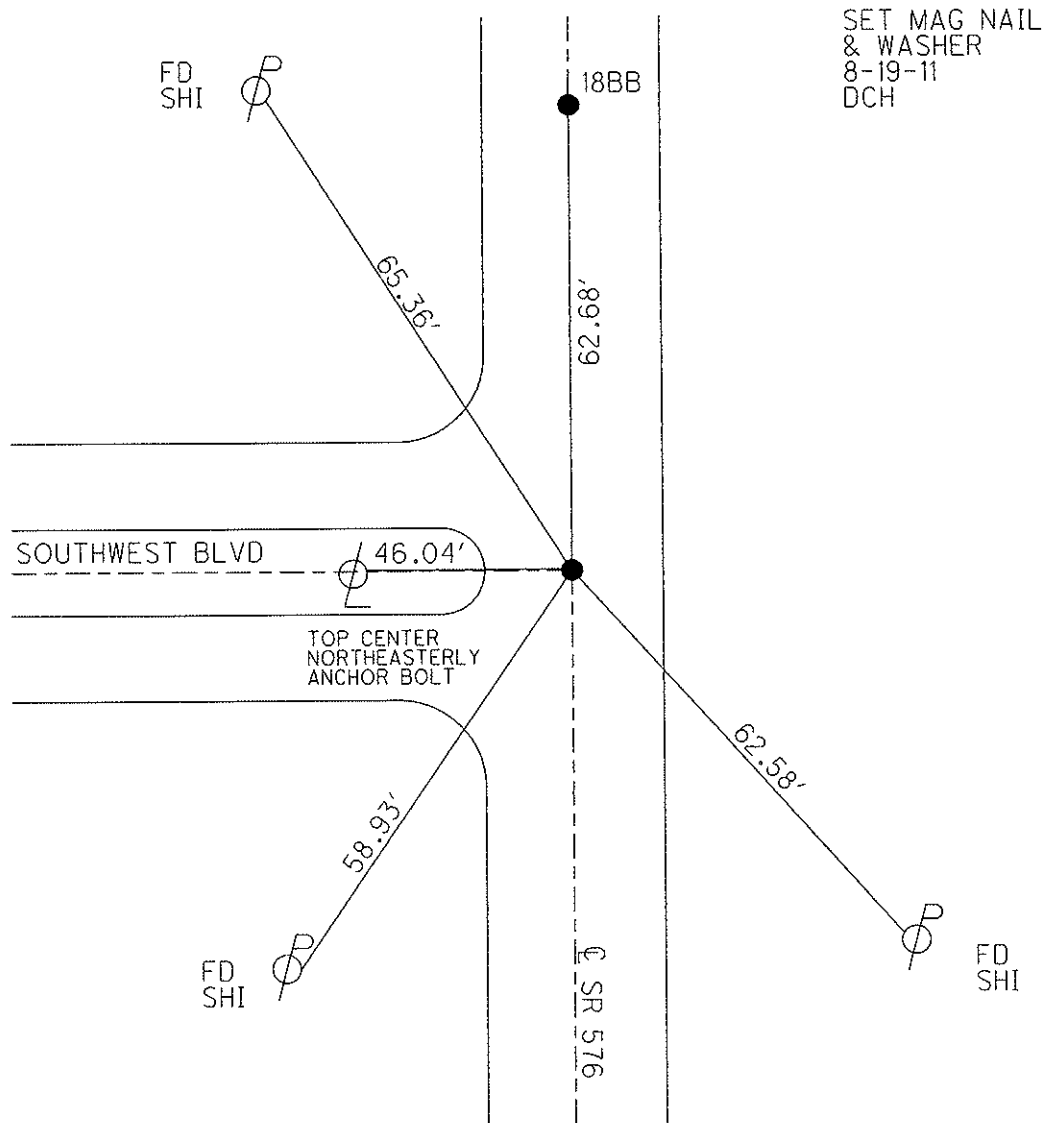
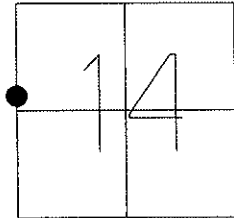
ON SURFACE - ~~BELOW~~ ON

~~LEFT C PAV'T~~ - RIGHT 0.4' RT

9.1 TO RT EDGE PAVEMENT

S.L.M. 517+46

Grid: Northing: 699775.253 Easting: 1390313.264



O.D.O.T. DISTRICT 2 SURVEY OFFICE

PERSONNEL _____

REFERENCE NO. 18-B

SHEET 13 OF 17

NOTES CANTERBURY

H.C. ROUSOS

DATE 5-27-97

ROUTE S.R. #576

R.C. BARNAISEL III

WEATHER SUNNY-WINDY

COUNTY WILLIAMS

TEMP. +65°

TOWNSHIP SUPERIOR

SECTION 14

T 7 N R 2 E

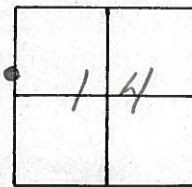
TYPE MONUMENT P.K. NAILS

ON SURFACE - BELOW YES

~~LEFT~~ - Q PAV'T. - RIGHT 0.4 BOTH

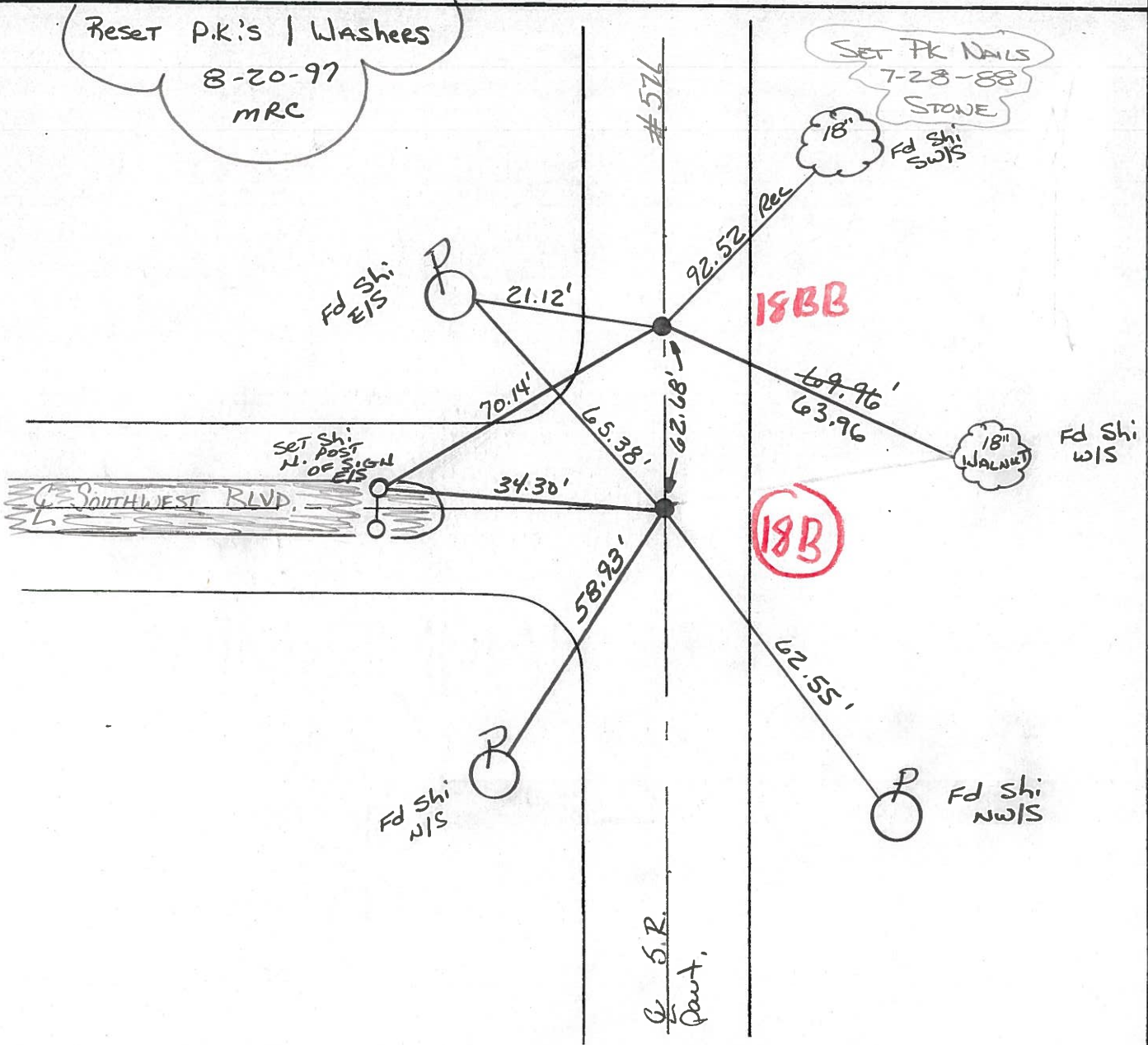
9.1 TO RT EDGE PAVEMENT

S.L.M. 517+46.44 518+09



Reset P.K.'s / Washers
 8-20-97
 MRC

SET PK NAILS
 7-28-88
 STONE
 18" Fd Shi SWIS



18BB

18B

SET SHI POST N. OF SIGN E/S
 SW. SW. CORNER
 SOUTHWEST BLVD.

S.R. #576
 Pavt.

O.D.O.T. DISTRICT 2 SURVEY OFFICE

PERSONNEL

REFERENCE NO. 18-B

SHEET 16 OF 19

NOTES 1. Stone

H.C. D. Curtis

DATE 16 Oct. 86

ROUTE SR #576

R.G. J. Hauscholder

WEATHER Cloudy

COUNTY Williams

TEMP. 420

TOWNSHIP Superior

SECTION 17

T. R.

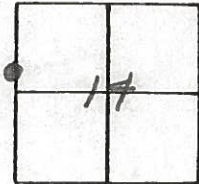
TYPE MONUMENT PK Nails (Both)

ON SURFACE - BELOW Surface

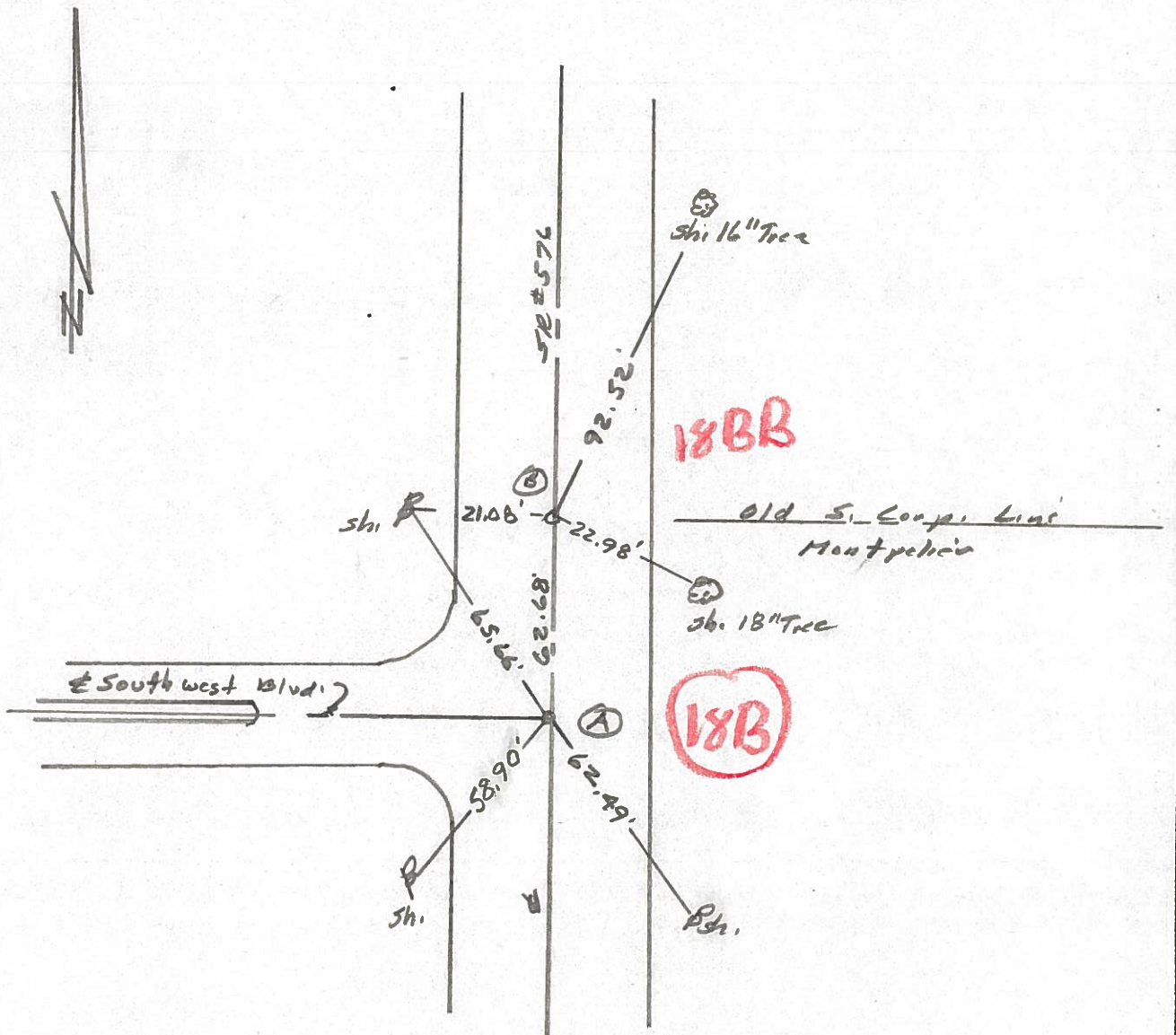
LEFT - <math>\epsilon</math> PAV'T. - RIGHT

TO EDGE PAVEMENT

S.L.M. (A) - 517+06 (B) - 517+68



Set PK Nails 7/28/88 IRS



County Williams S.R. 576

Date 19 Aug. 80

Township Superior

Weather Cloudy

Section 14

Temp. 70°

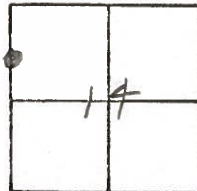
T N, R E

Personnel L. Stone

R. Michalek

P. Neoser

D. Curtis



REF. NO. **18-B**

