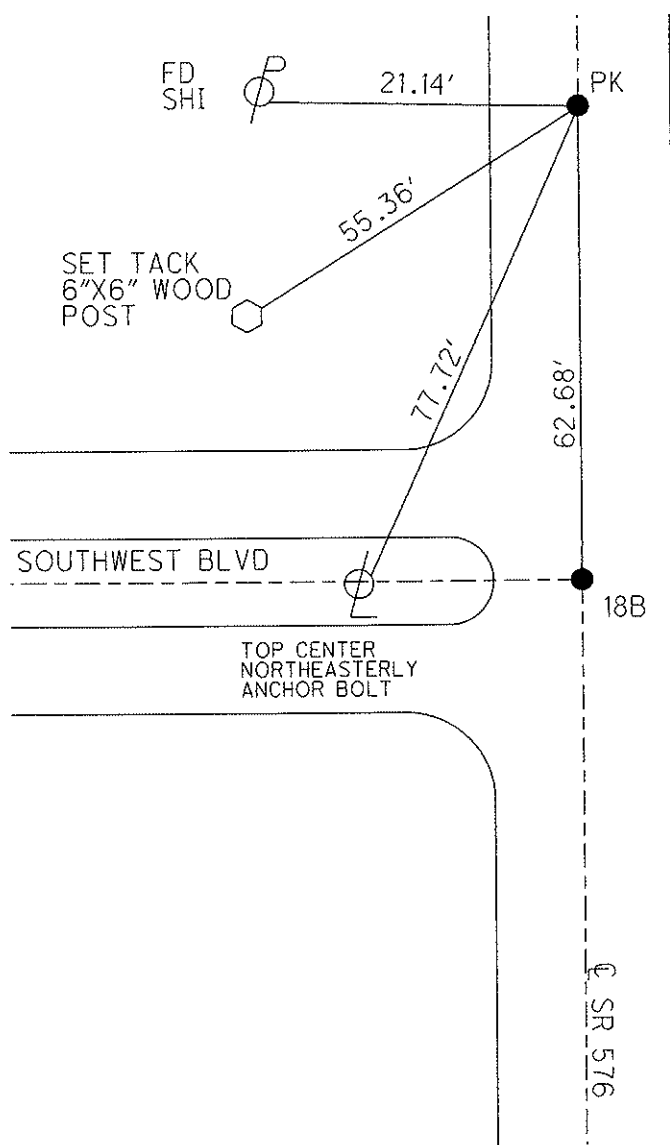
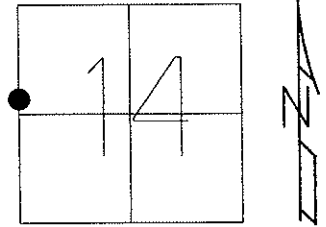


O.D.O.T. DISTRICT 2 SURVEY OFFICE USE ONLY

PERSONNEL	REFERENCE NO. <u>18-BB</u>	SHEET <u>24</u> OF <u>27</u>
NOTES <u>ROUSOS</u>	DATE <u>6-16-11</u>	ROUTE <u>S.R. 576</u>
H.C. <u>ROUSOS</u>	WEATHER <u>CLOUDY</u>	COUNTY <u>WILLIAMS</u>
R.C. <u>HOMAN</u>	TEMP. <u>70°</u>	TOWNSHIP <u>SUPERIOR</u>
		SECTION <u>14</u>
		T <u>7</u> N R <u>2</u> E

TYPE MONUMENT PK NAIL
 ON SURFACE - ~~BELOW~~ ON
~~LEFT~~ Q PAV'T - RIGHT 0.4' RT
9.1 TO RT. EDGE PAVEMENT
 S.L.M. 518+09
 Grid: Northing: 699775.253 Easting: 1390313.264



SET MAG NAIL
& WASHER
8-19-11
DCH

O.D.O.T. DISTRICT 2 SURVEY OFFICE

PERSONNEL _____

REFERENCE NO. 18-B

SHEET 13 OF 17

NOTES CANTERBURY

H.C. ROUSOS

DATE 5-27-97

ROUTE S.R. #576

R.C. BARNAISEL III

WEATHER SUNNY-WINDY

COUNTY WILLIAMS

TEMP. +65°

TOWNSHIP SUPERIOR

SECTION 14

T 7 N R 2 E

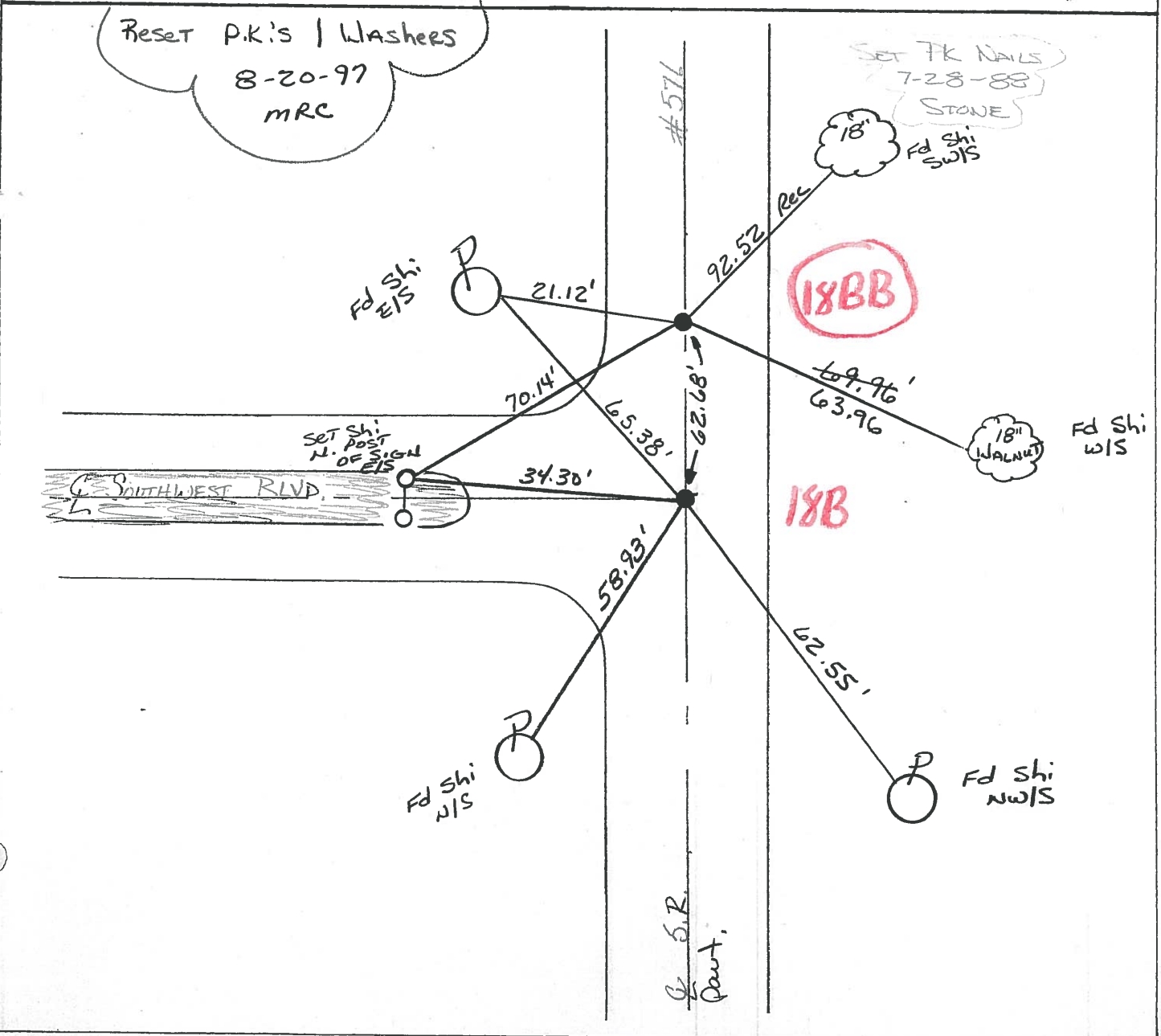
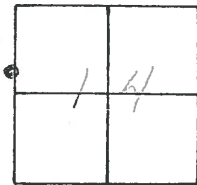
TYPE MONUMENT _____ P.K. NAILS

ON SURFACE - ~~BELOW~~ yes

LEFT - & PAW'T. - RIGHT 0.4 BOTH

9.1 TO RT EDGE PAVEMENT

S.L.M. 517+46 518+09



O.D.O.T. DISTRICT 2 SURVEY OFFICE

PERSONNEL

REFERENCE NO. 18-B

SHEET 16 OF 19

NOTES 1. Stone

H.C. D. Curtis

DATE 16 Oct. 86

ROUTE SR #576

R.C. T. Householder

WEATHER Cloudy

COUNTY Williams

TEMP. 42°

TOWNSHIP Superior

SECTION 14

T. R.

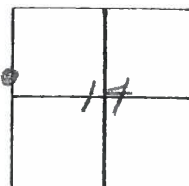
TYPE MONUMENT PK Nails (Both)

ON SURFACE - BELOW Surface

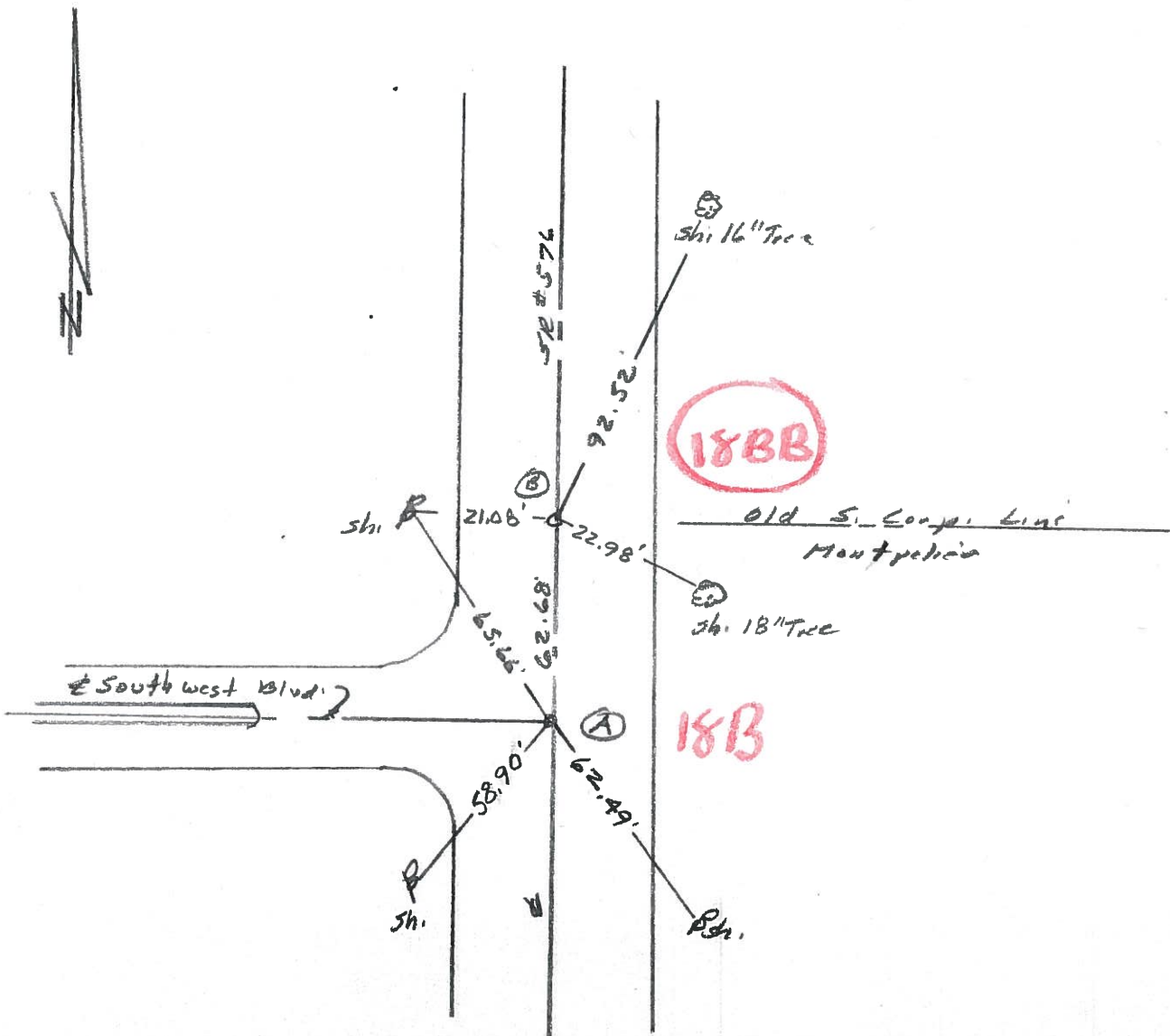
LEFT - ☉ PAV'T. - RIGHT

 TO EDGE PAVEMENT

S.L.M. Ⓐ - 517+06 Ⓑ - 517+68



Set PK Nails 7/28/88 1RS



County Williams S.R. 576

Date 19 Aug. 80

Township Superior

Weather Cloudy

Section 14

Temp. 70°

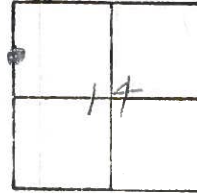
T N, R E

Personnel L. Stone

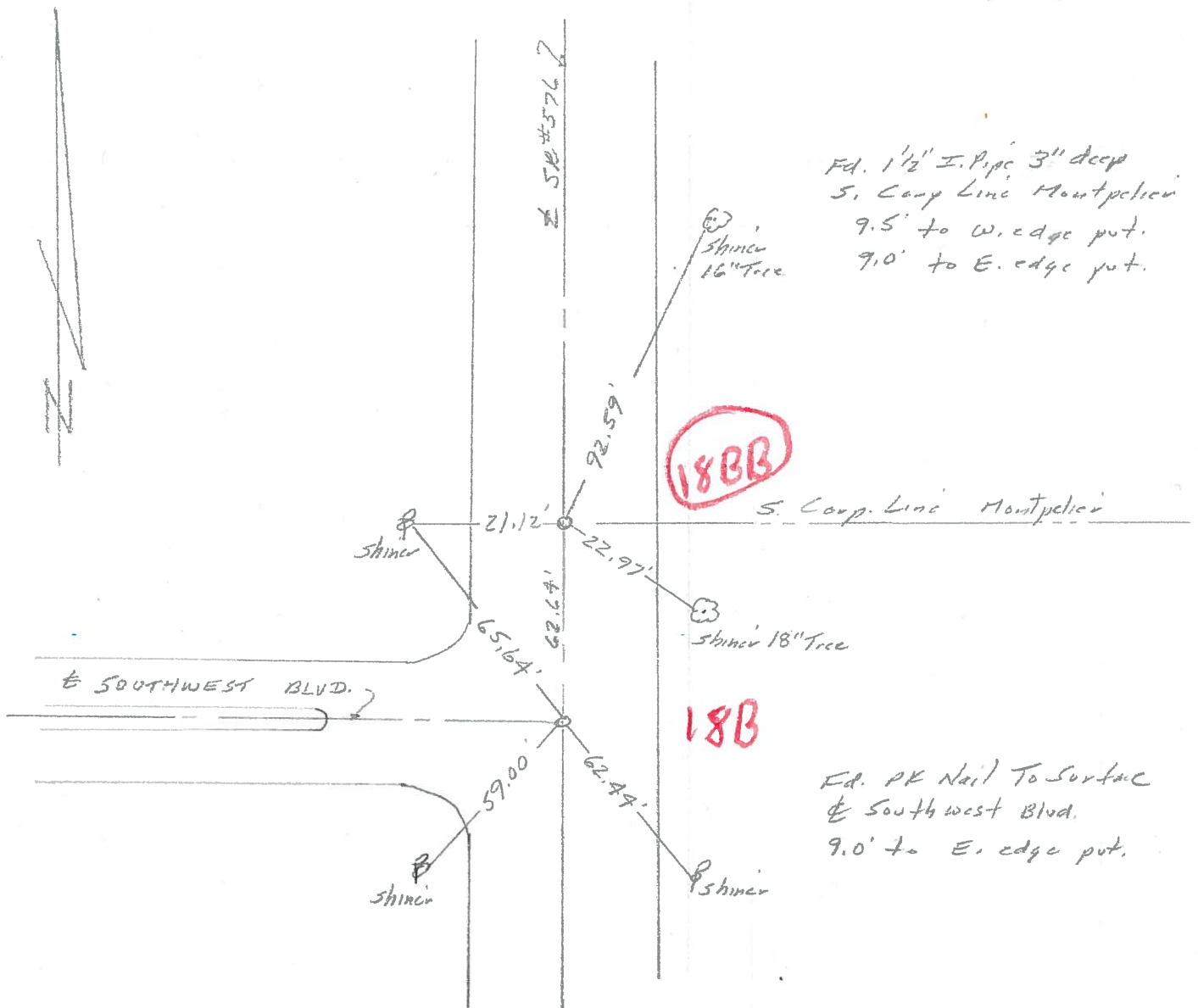
R. Michalok

P. Neuser

D. Curtis



REF. NO. **18-B**



Ed. 1 1/2" I. Pipe 3" deep
S. Corp Line Montpelier
9.5' to W. edge put.
9.0' to E. edge put.

18BB

S. Corp. Line Montpelier

18B

Ed. PK Nail To Surface
E. Southwest Blvd.
9.0' to E. edge put.