

O.D.O.T. DISTRICT 2 SURVEY OFFICE USE ONLY

PERSONNEL

REFERENCE NO. 18-D

SHEET 26 OF 27

NOTES ROUSOS

DATE 6-16-11

ROUTE S.R. 576

H.C. ROUSOS

WEATHER CLOUDY

COUNTY WILLIAMS

R.C. HOMAN

TEMP. 70°

TOWNSHIP SUPERIOR

SECTION 14

T 7 N R 2 E

TYPE MONUMENT PK NAIL

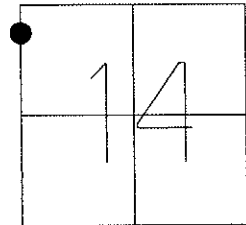
ON SURFACE - ~~BELOW~~ ON

~~LEFT - C PAV'T - RIGHT~~ ON

9.8 TO RT EDGE PAVEMENT

S.L.M. 525+31

Grid: Northing: 700714.750 Easting: 1390334.668



SET MAG NAIL  
& WASHER  
8-19-11  
DCH

FD  
SHI



69.56'

SR 576

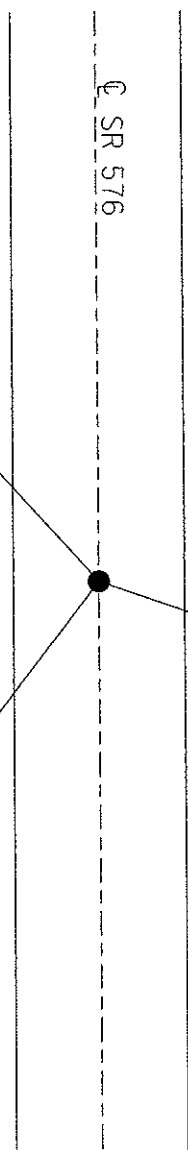
18.54'



CUT "X"  
ON TOP  
FLANGE  
W BOLT

74.99'

FD  
SHI



# O.D.O.T. DISTRICT 2 SURVEY OFFICE

PERSONNEL

REFERENCE NO. 18-D

SHEET 15 OF 17

NOTES Conterbury

H.C. Rousos

R.C. Barnhisel

DATE 5/28/97

WEATHER Cloudy

TEMP. +68°F

ROUTE SR #576

COUNTY WILLIAMS

TOWNSHIP SUPERIOR

SECTION 14

T5 N R 2 E

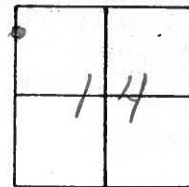
TYPE MONUMENT P. K. NAIL

ON SURFACE - ~~BELOW~~ ON SURFACE

~~LEFT- & PAV'T. - RIGHT~~  &

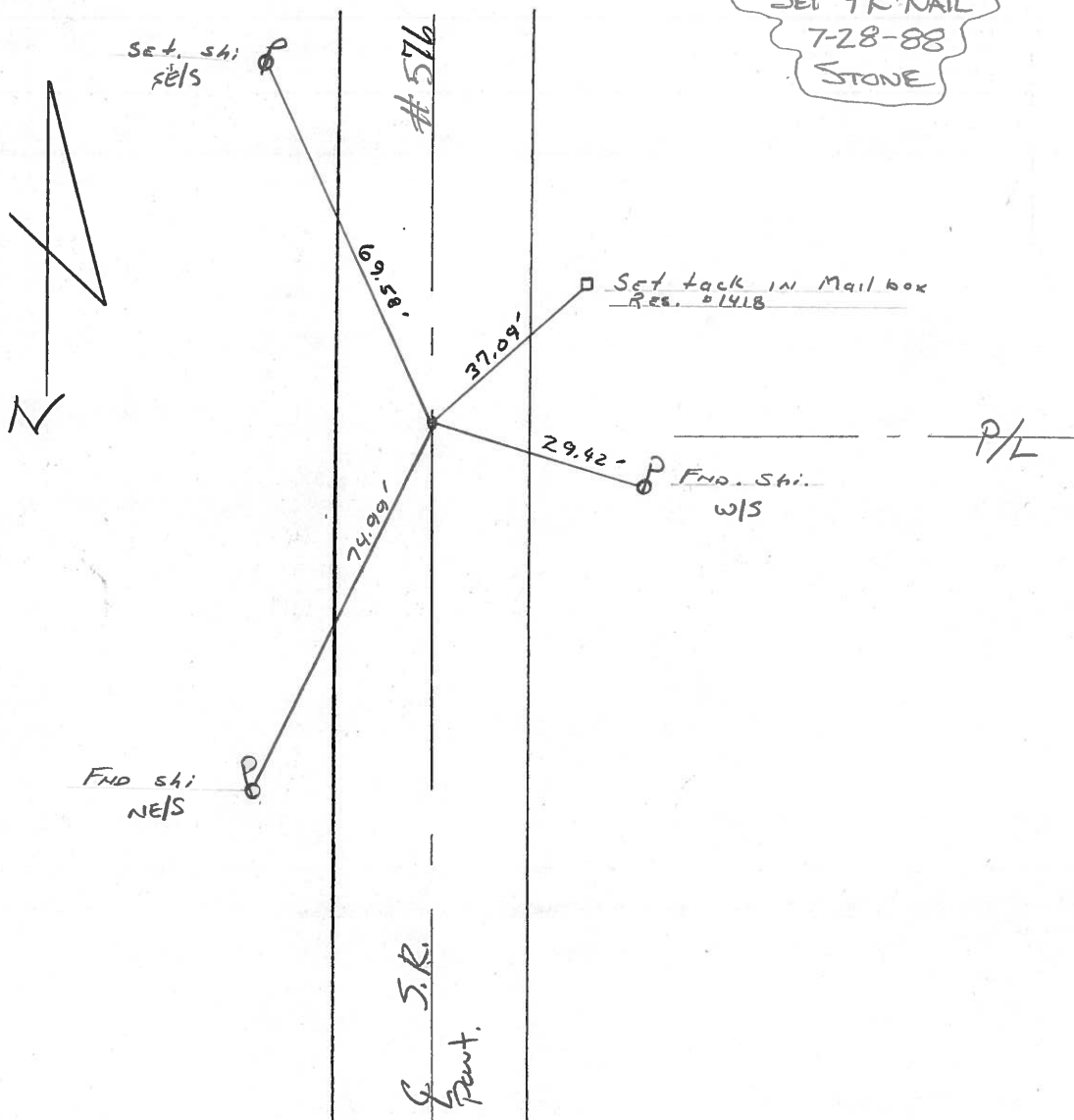
9.8 TO R.T. EDGE PAVEMENT

S.L.M. 526-193



RESET PICK/WASHER

9-22-97  
MRC



SET PK NAIL  
7-28-88  
STONE

# O.D.O.T. DISTRICT 2 SURVEY OFFICE

PERSONNEL

REFERENCE NO. 18-D

SHEET 18 OF 19

NOTES 1.5 Lane

H.C. D. Curtis

R.G. J. Haushalter

DATE 16 Oct. 86

WEATHER Cloudy

TEMP. 42°

ROUTE SK#576

COUNTY Williams

TOWNSHIP Superior

SECTION 14

T.      R.     

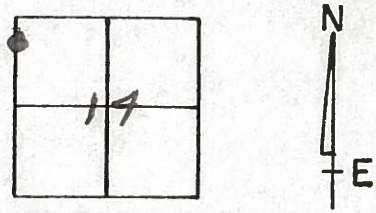
TYPE MONUMENT PK Nail

ON SURFACE - BELOW Surface

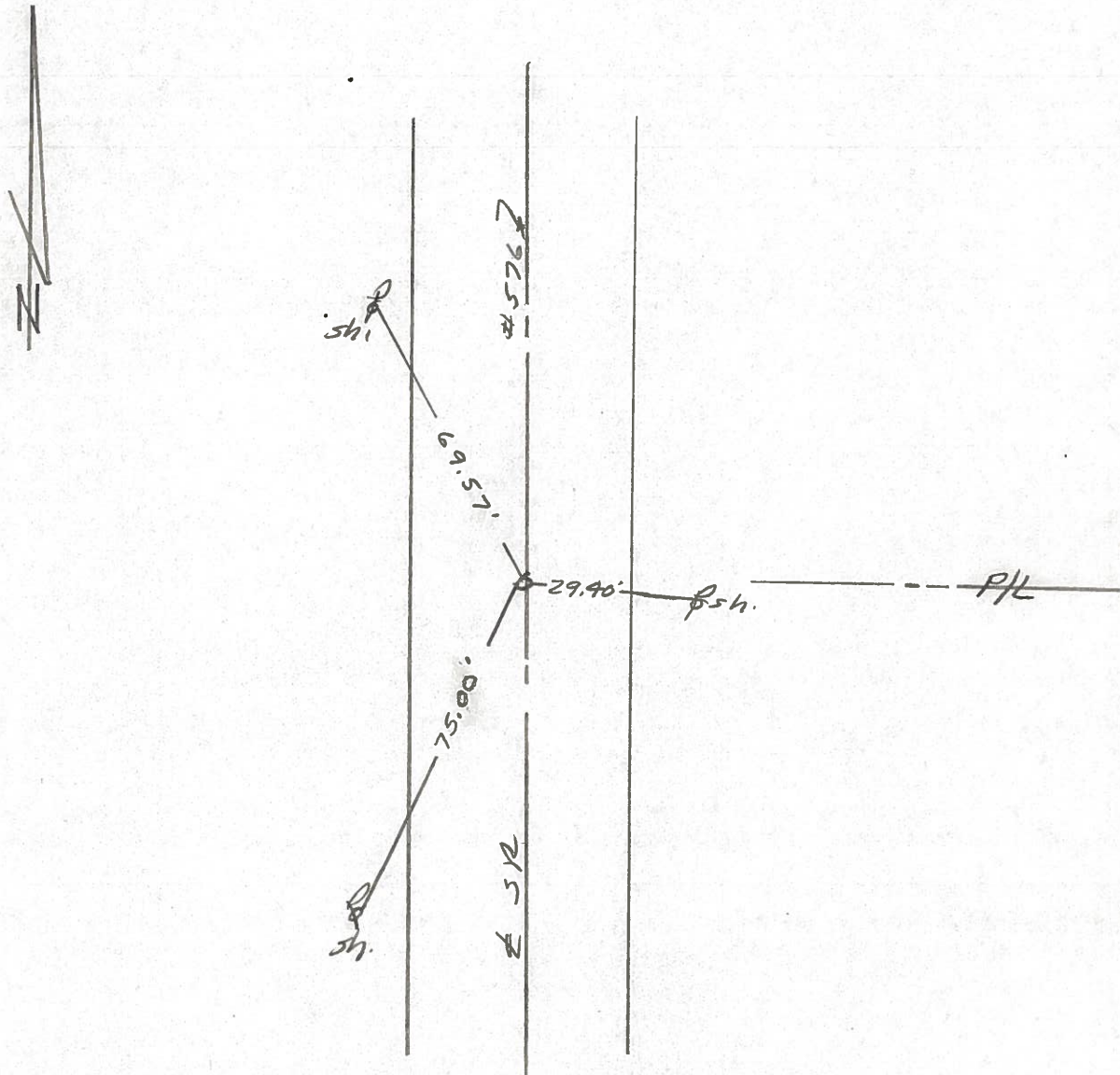
LEFT -  $\odot$  PAV'T. - RIGHT     

     TO      EDGE PAVEMENT

S.L.M. 526+46



*Set PK Nail 7/28/88 IRS*



County Williams S.R. 576

Date 19 Aug. 80

Township Superior

Weather Cloudy

Section 14

Temp. 73°

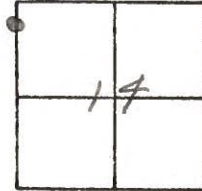
T\_N, R\_E

Personnel I. Stone

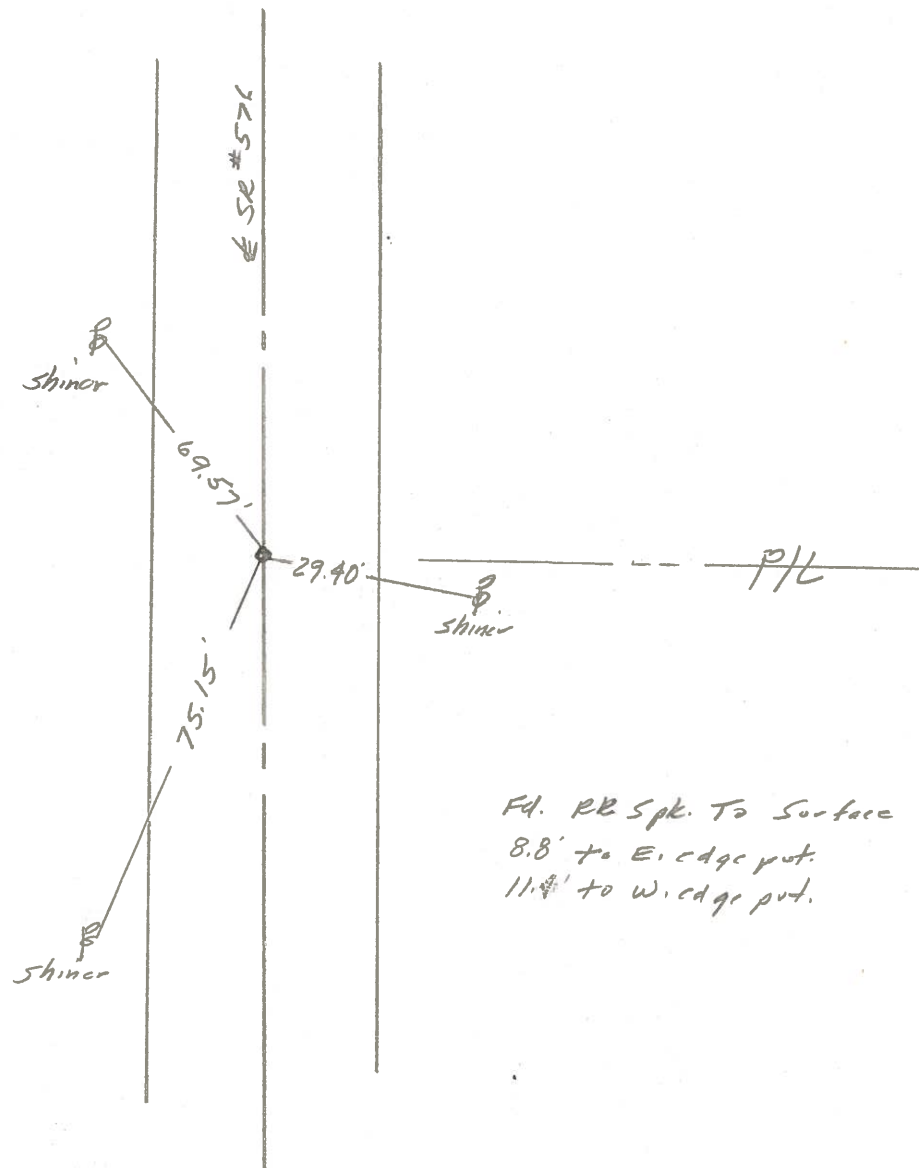
R. Michalak

P. Nouse

D. Curtis



REF NO. 18-D



Fd. RB Spk. To Surface  
8.8' to E. edge put.  
11.4' to W. edge put.