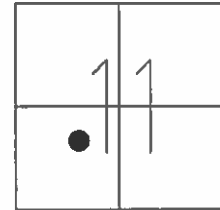


O.D.O.T. DISTRICT 2 SURVEY OFFICE (USE ONLY)

PERSONNEL _____ REFERENCE NO. 23 SHEET 7 OF 32
 NOTES HOMAN DATE 6-26-12 ROUTE SR 576
 H.C. ROUSOS WEATHER CLEAR COUNTY WILLIAMS
 R.C. HOMAN TEMP. 60° TOWNSHIP SUPERIOR
 _____ SECTION 11
 _____ T 7 N R 2 E

TYPE MONUMENT PK NAIL
 ON SURFACE - ~~BELOW~~ ON
~~LEFT~~ - ☉ PAV'T - ~~RIGHT~~ ON _____
12.1 TO RT EDGE PAVEMENT
 S.L.M. 559+76.73



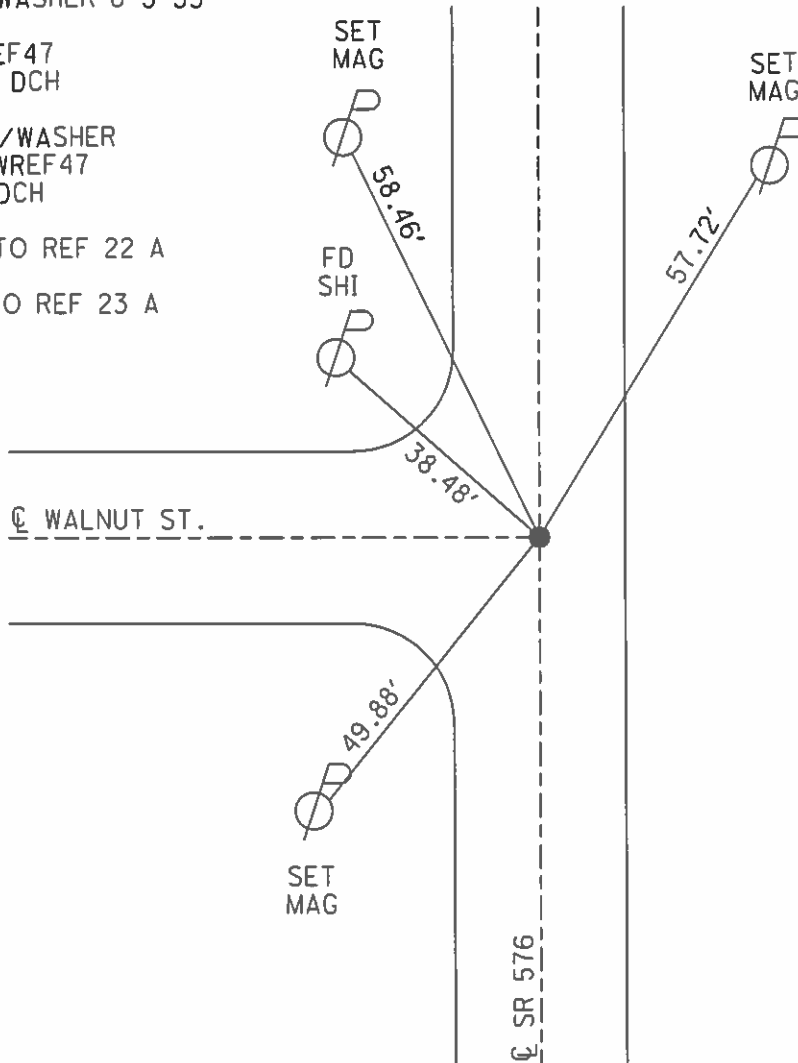
Grid: Northing: 702573.106 Easting: 1392039.836

SET PK/WASHER 8-5-93

FD PK REF47
 6-26-12, DCH

SET MAG/WASHER
 GPS, NEWREF47
 2-5-13, DCH

134.66' TO REF 22 A
 211.40' TO REF 23 A



O.D.O.T. DISTRICT 2 SURVEY OFFICE

PERSONNEL _____

REFERENCE NO. _____

SHEET 6 OF 15

NOTES LOGHRKE

H.C. ROMERO

R.C. CANTER BURY

CORDS

DATE 6-15-93

WEATHER CLEAR

TEMP. +65

ROUTE S.R. 576

COUNTY Williams

TOWNSHIP Superior

SECTION 11

T 7 N R 2 W

TYPE MONUMENT P.K. NAIL

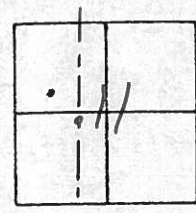
ON SURFACE - BELOW Yes

LEFT - C PAV'T. - RIGHT Yes

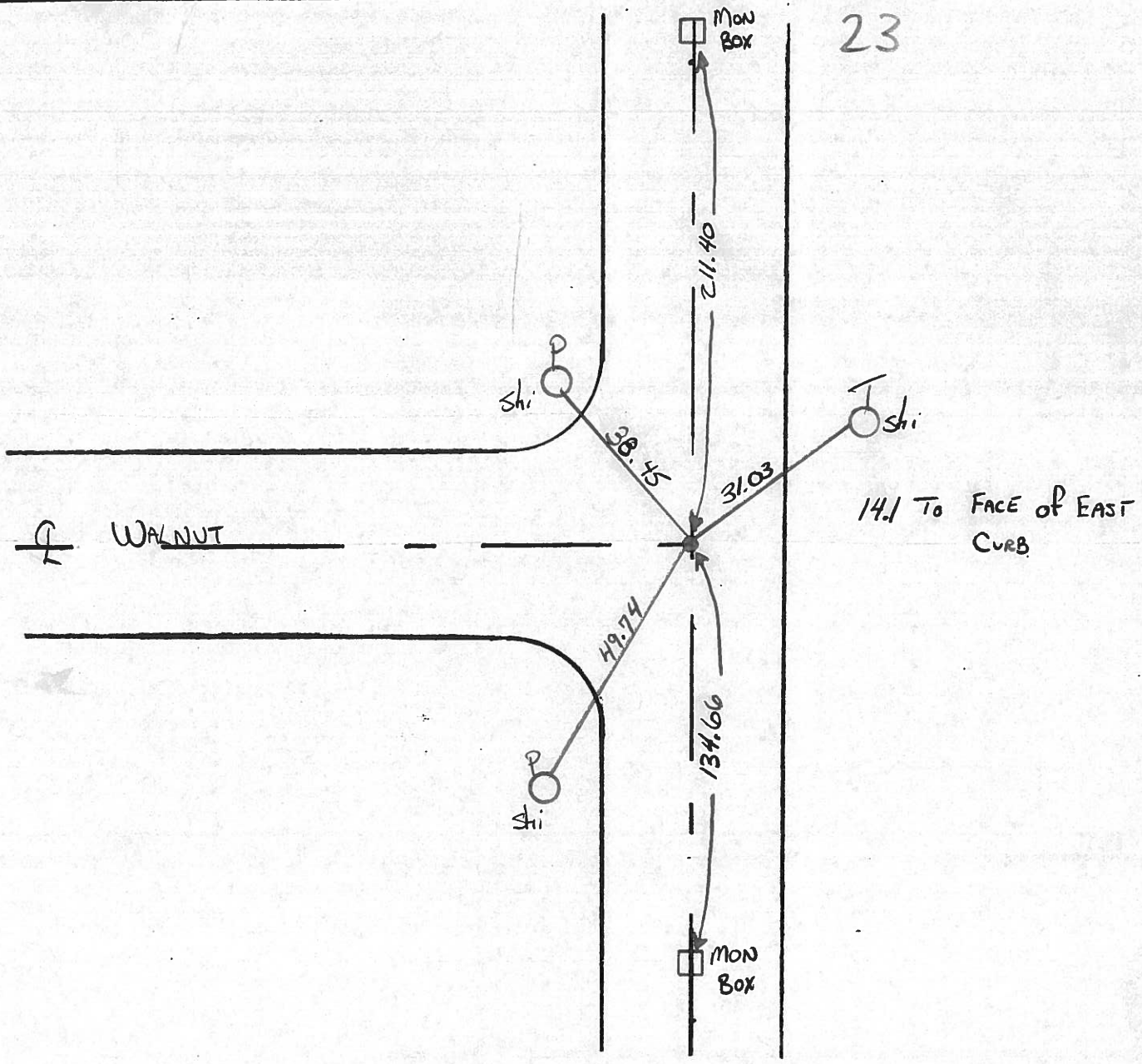
R.I. TO R+ EDGE PAVEMENT

S.L.M. St60 +60

Set P.K. / WASHER
8-5-93



23



County Williams S.R. 576

Date 14 Oct. 80

Township Superior

Weather cloudy

Section 11

Temp. 50°

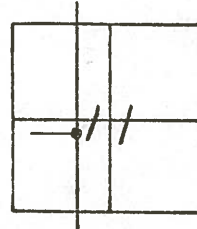
T_N, R_E

Personnel 1. Stone

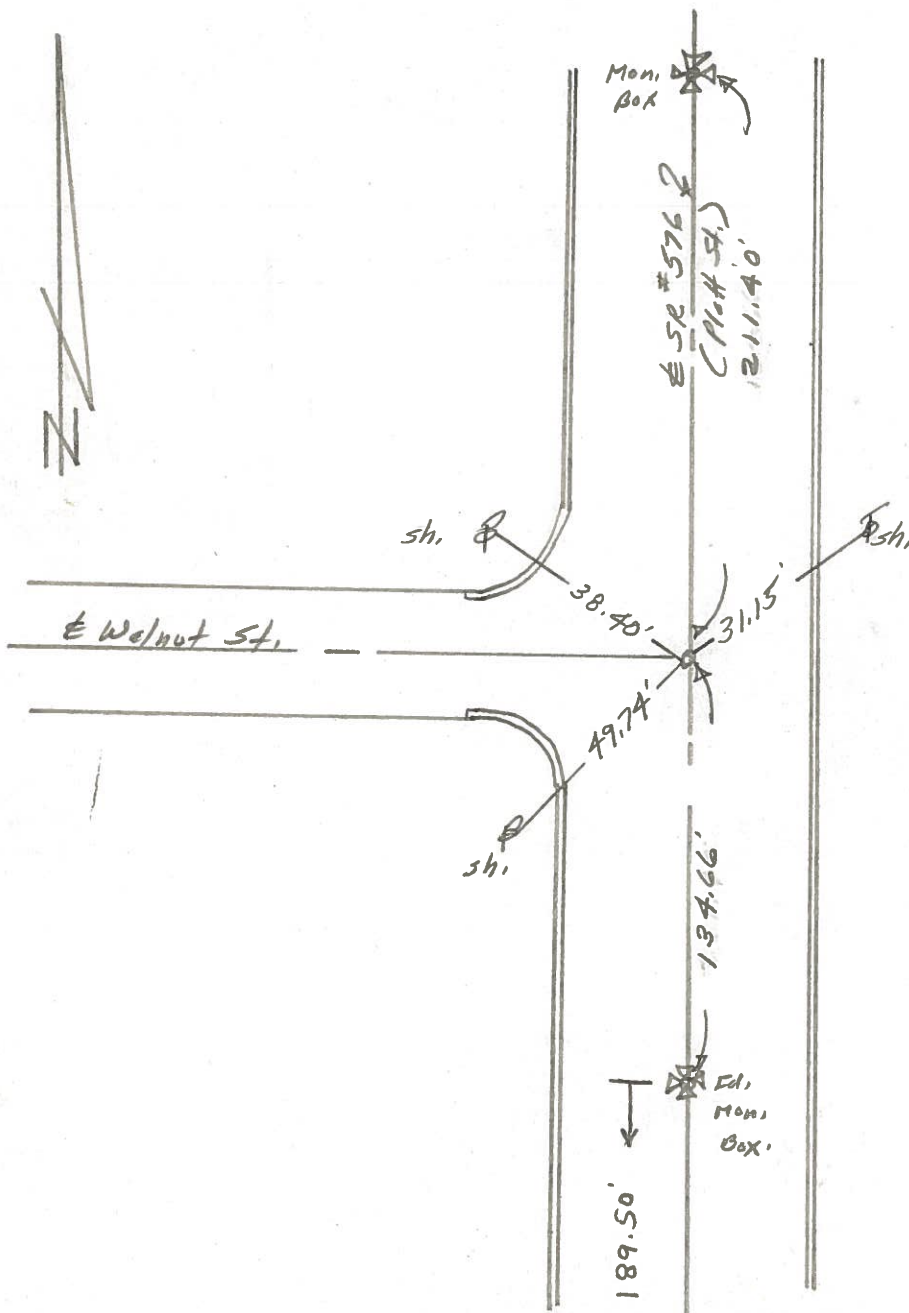
P. Newsc

D. Curtis

R. Michalak



REF. NO. 23

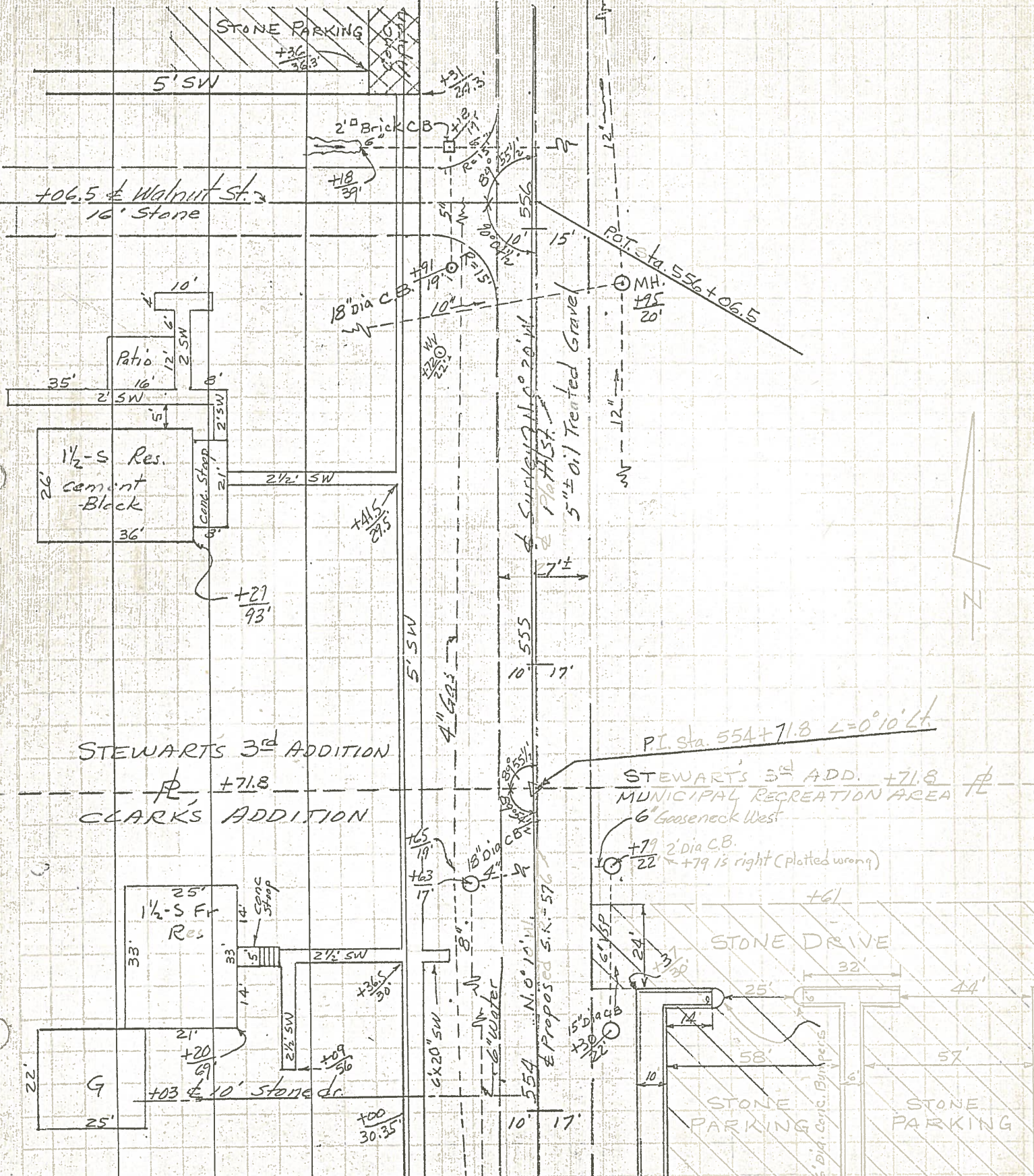


Fd. RR. Spl. To Surface
14.0' to E. F. Curb
SLM = 560+60

PERSONNEL	TITLE	PERSONNEL	TITLE
Red Beach			
Armbruster			
Knape			
Mohler			

COUNTY Williams DATE Nov. 52
 S. R. 576 Relocation WEATHER _____
 SEC. 10.25-17.9 Montpelier TEMP. _____

DESCRIPTION TOPO JOB NO. _____

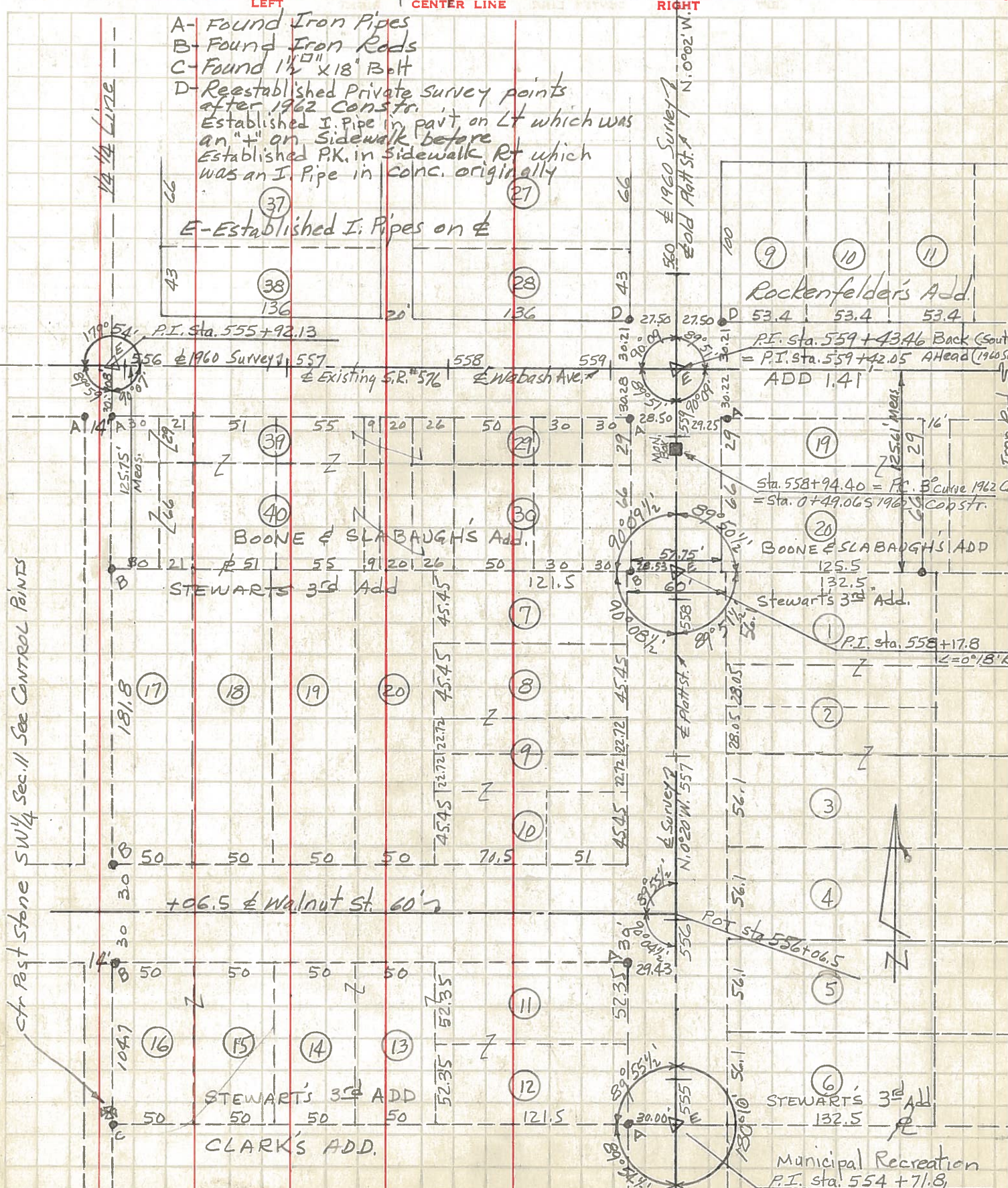


PERSONNEL TITLE PERSONNEL TITLE COUNTY Williams DATE Nov 62
 Red Beach Armbruster
 Knape
 Mohler

S. R. 576 Relocation WEATHER

SEC. TEMP.

DESCRIPTION ALIGNMENT & Property LINE POINTS JOB NO.



LEFT CENTER LINE RIGHT
 A- Found Iron Pipes
 B- Found Iron Rods
 C- Found 1/2" x 18" Bolt
 D- Reestablished Private Survey points after 1962 Constr.
 Established I. Pipe in pavt on Lt which was an "I" on Sidewalk before
 Established P.K. in sidewalk Rt which was an I. Pipe in conc. originally
 E- Established I. Pipes on &

Rockefeller's Add.
 53.4 53.4 53.4

Boone & Slabough's Add.
 125.5 132.5

Stewart's 3rd Add.
 121.5

Stewart's 3rd Add.
 132.5

Clark's Add.

Ctr Post Stone SW 1/4 Sec. 11 See CONTROL POINTS

Municipal Recreation
 P.I. Sta. 554+71.8