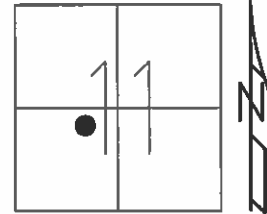


O.D.O.T. DISTRICT 2 SURVEY OFFICE (USE ONLY)

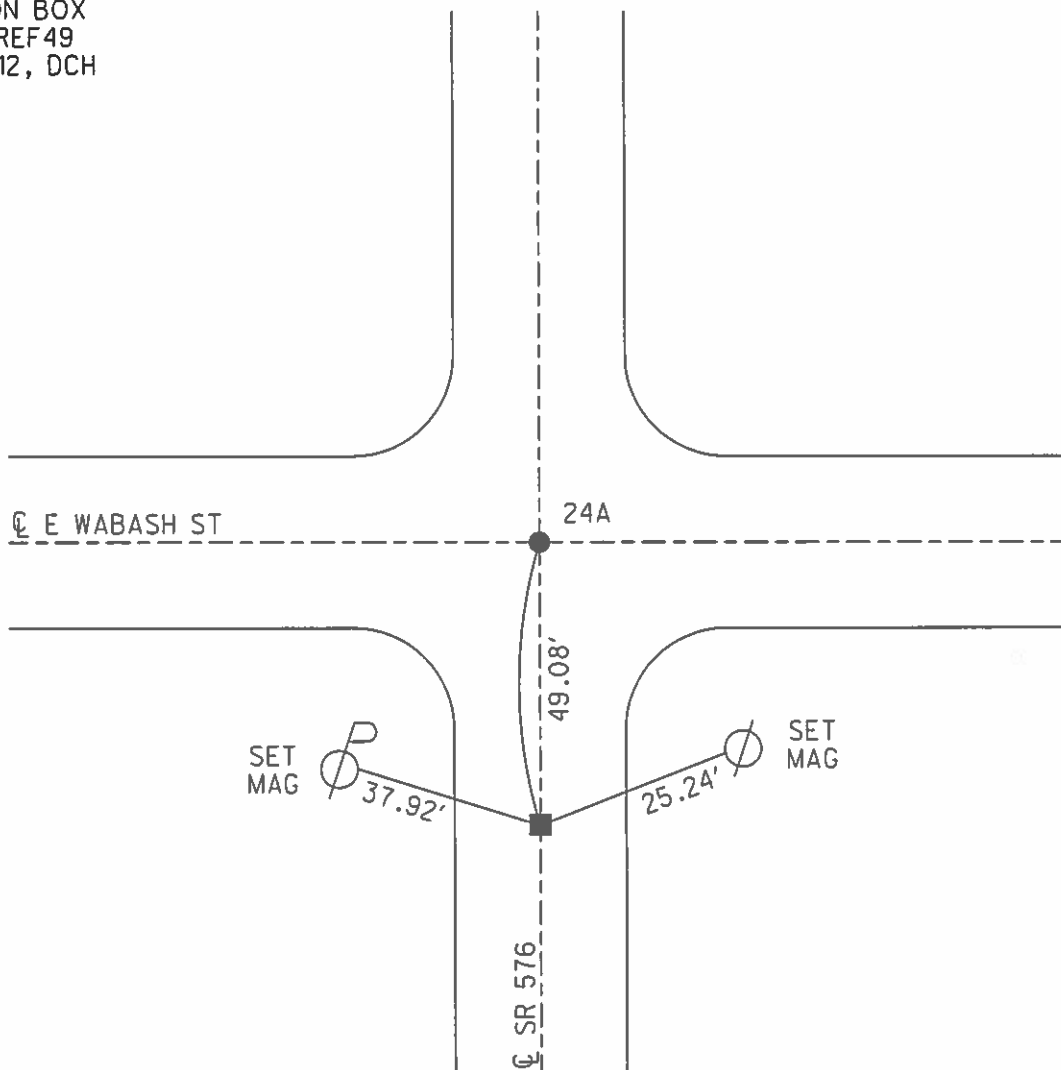
PERSONNEL \_\_\_\_\_ REFERENCE NO. 24 SHEET 9 OF 32  
 NOTES HOMAN DATE 6-26-12 ROUTE SR 576  
 H.C. ROUSOS WEATHER CLEAR COUNTY WILLIAMS  
 R.C. HOMAN TEMP. 60° TOWNSHIP SUPERIOR  
 \_\_\_\_\_ SECTION 11  
 \_\_\_\_\_ T 7 N R 2 E

TYPE MONUMENT MON BOX (1/2" IRON PIPE)  
 ON SURFACE - ~~BELOW~~ ON  
~~LEFT~~ - Q PAV'T - ~~RIGHT~~ ON  
 \_\_\_\_\_ TO \_\_\_\_\_ EDGE PAVEMENT  
 S.L.M. 562+64.61



Grid: Northing: 702860.8977 Easting: 1392044.7095

FD MON BOX  
 GPS, REF49  
 6-26-12, DCH



# O.D.O.T. DISTRICT 2 SURVEY OFFICE

PERSONNEL \_\_\_\_\_

REFERENCE NO. \_\_\_\_\_

SHEET 8 OF 15

NOTES LOEHRKE

H.C. CANTERBURY

DATE 6-15-93

ROUTE S.R. 576

R.C. ROMETO

WEATHER CLEAR

COUNTY Williams

CORDES

TEMP. +65

TOWNSHIP Superior

SECTION 17

T 7 N R 2 W

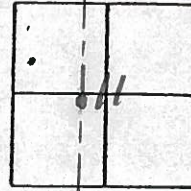
TYPE MONUMENT 1/2" IRON PIPE

Set P.K. / WASHER

ON SURFACE - BELOW Yes

8-5-94

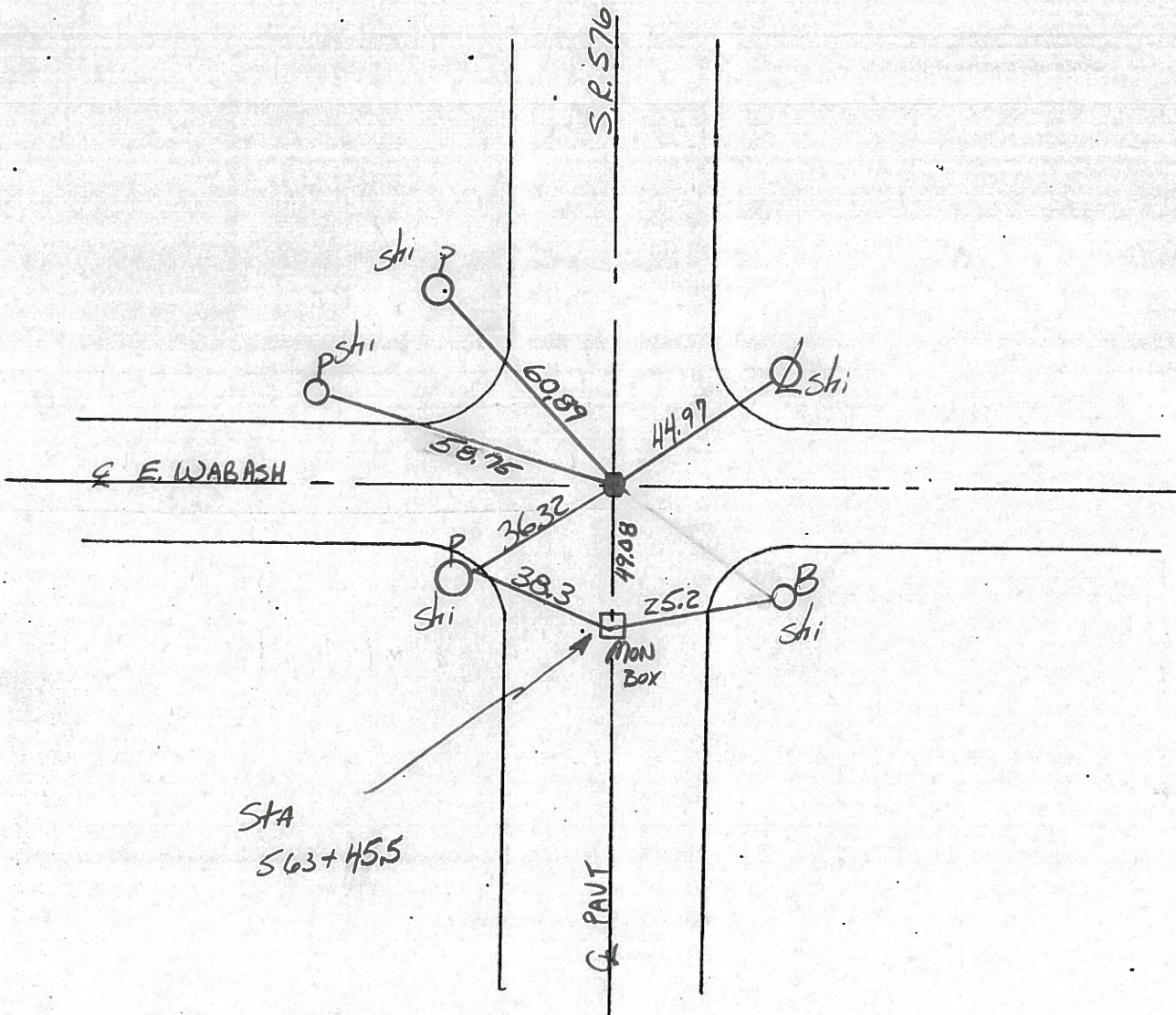
LEFT - & PAV'T. - RIGHT Yes



TO \_\_\_\_\_ EDGE PAVEMENT

S.L.M. 563+96

24 & 24A



PERSONNEL TITLE PERSONNEL TITLE

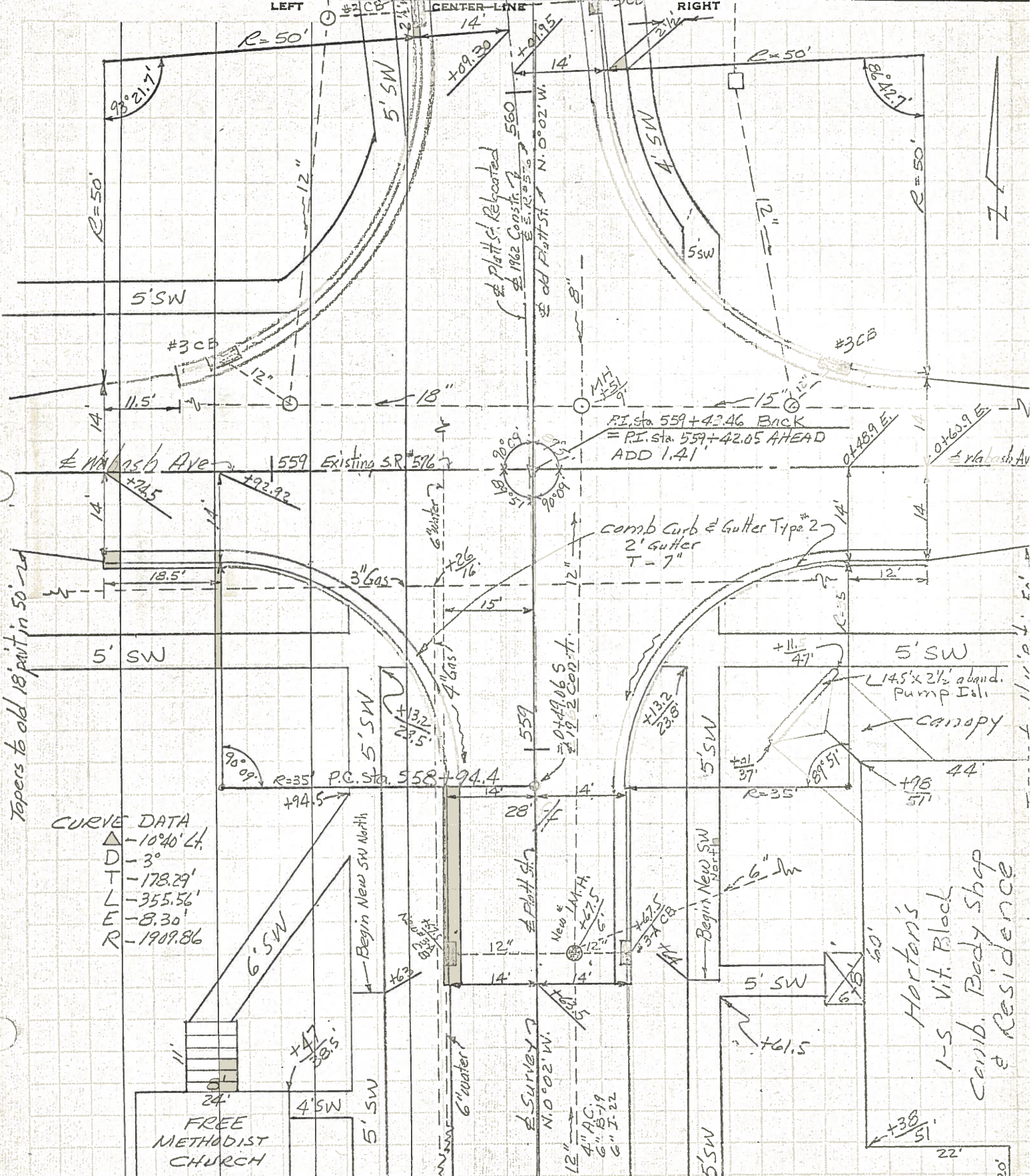
Red Beach  
Armbruster  
Knappe  
Mobler

COUNTY Williams DATE Nov. '62

S. R. 576 Relocation WEATHER

SEC. 10.25-10.59 Montpelier TEMP.

DESCRIPTION END TOPO JOB NO.



Tapers to old 18' part in 50'-20'

CURVE DATA  
 Δ -10°40' Lt.  
 D -3'  
 T -178.29'  
 L -355.56'  
 E -8.30'  
 R -1909.86'

Horton's  
 1-5 Vit. Block  
 Comb. Body Shop  
 & Residence

PERSONNEL TITLE PERSONNEL TITLE

Red Beach  
Armbruster  
Knappe  
Mohler

COUNTY Williams

DATE Nov 62

S. R. 576 Relocation

WEATHER

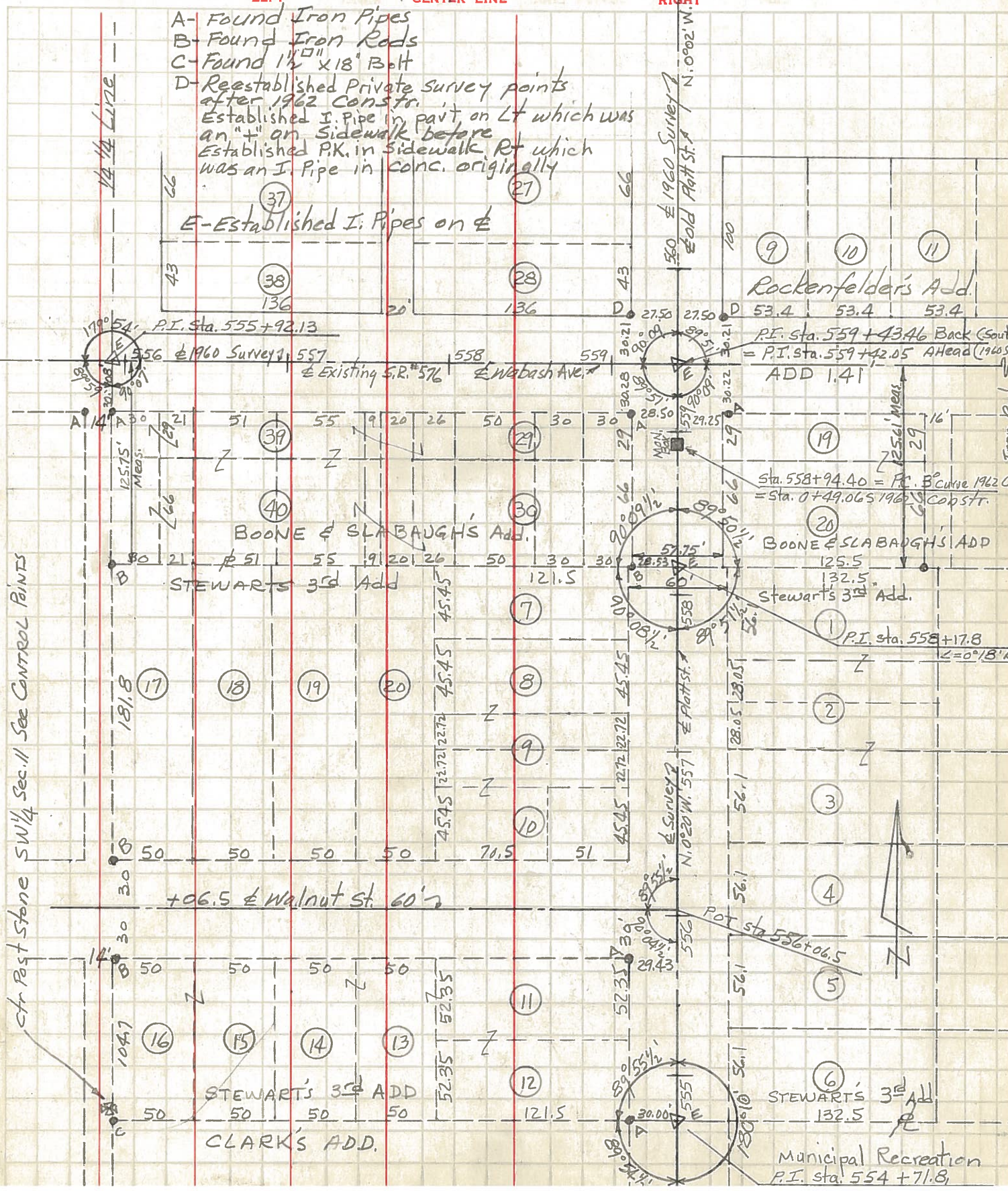
SEC.

TEMP.

DESCRIPTION ALIGNMENT & Property LINE POINTS

JOB NO.

- A- Found Iron Pipes
- B- Found Iron Rods
- C- Found 1 1/2" x 18" Bolt
- D- Reestablished Private survey points after 1962 Constr.  
Established I. Pipe in pavt on Lt which was an "+" on Sidewalk before  
Established P.K. in sidewalk Rt which was an I. Pipe in conc. originally
- E- Established I. Pipes on &



ctr Post Stone SW 1/4 Sec. 11 See CONTROL POINTS

Municipal Recreation  
P.I. sta. 554 + 71.8

