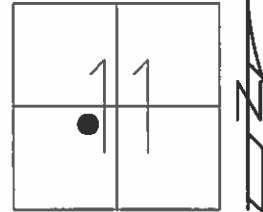


O.D.O.T. DISTRICT 2 SURVEY OFFICE (USE ONLY)

PERSONNEL _____ REFERENCE NO. 24 A SHEET 10 OF 32
 NOTES HOMAN DATE 6-26-12 ROUTE SR 576
 H.C. ROUSOS WEATHER CLEAR COUNTY WILLIAMS
 R.C. HOMAN TEMP. 60° TOWNSHIP SUPERIOR
 _____ SECTION 11
 _____ T 7 N R 2 E

TYPE MONUMENT PK/WASHER
 ON SURFACE - ~~BELOW~~ ON _____
~~LEFT~~ - ☉ PAV'T - ~~RIGHT~~ ON _____
 _____ TO _____ EDGE PAVEMENT
 S.L.M. 563+13.77

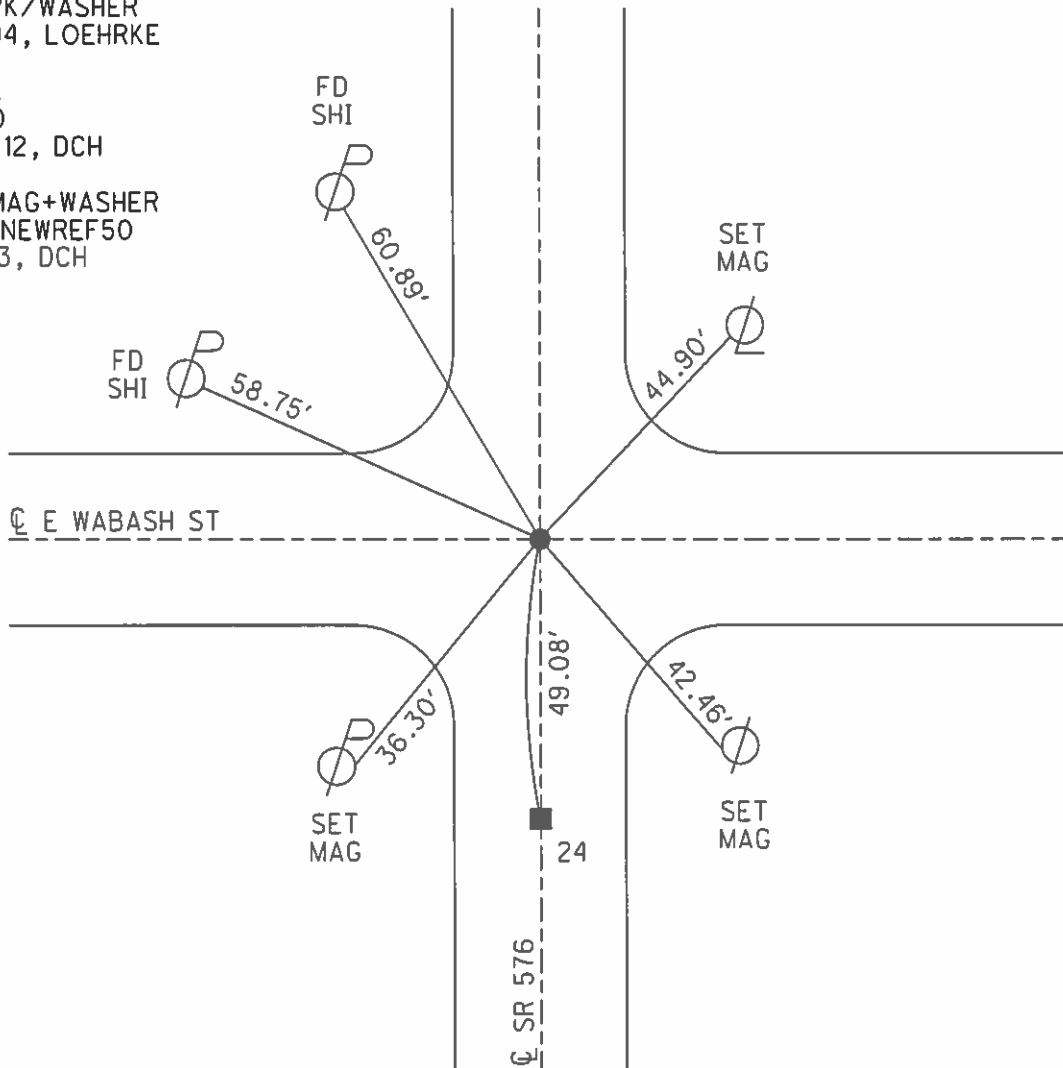


Grid: Northing: 702910.0415 Easting: 1392045.7813

SET PK/WASHER
8-5-94, LOEHRKE

FD PK
REF50
6-26-12, DCH

SET MAG+WASHER
GPS, NEWREF50
2-5-13, DCH



O.D.O.T. DISTRICT 2 SURVEY OFFICE

PERSONNEL _____

REFERENCE NO. _____

SHEET 8 OF 15

NOTES LOEHRKE

H.C. CANTERBURY

DATE 6-15-93

ROUTE S.R. 576

R.C. ROMETO

WEATHER CLEAR

COUNTY Williams

CORDES

TEMP. +65

TOWNSHIP Superior

SECTION 17

T 7 N R 2 W

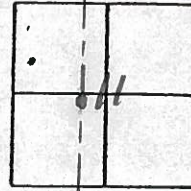
TYPE MONUMENT 1/2" IRON PIPE

Set P.K. / WASHER

ON SURFACE - BELOW Yes

8-5-94

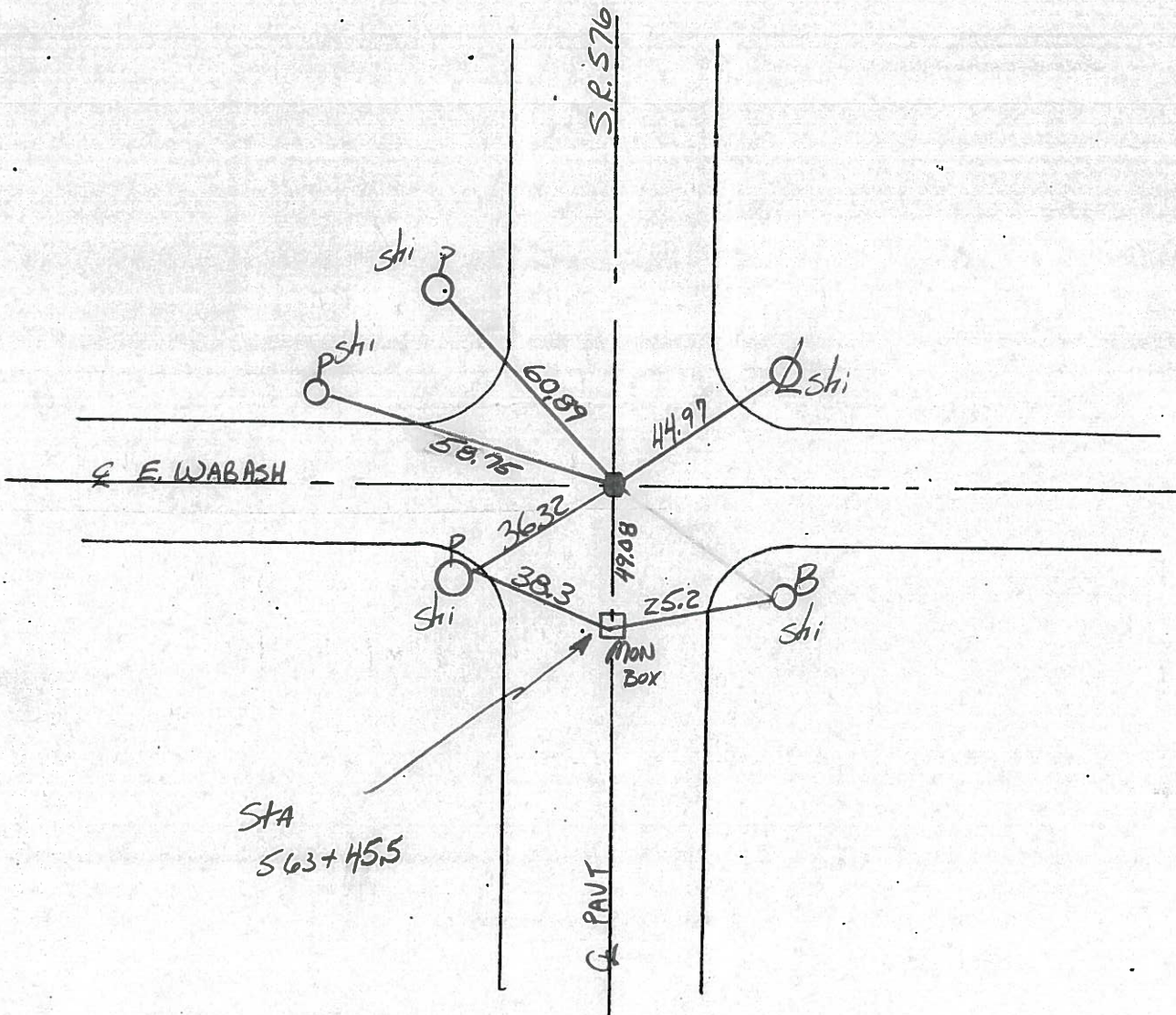
LEFT - & PAV'T. - RIGHT Yes



TO _____ EDGE PAVEMENT

S.L.M. 563+96

24 & 24A



County Williams S.R. 576

Date 14 Oct. 80

Township Superior

Weather Cloudy

Section 11

Temp. 50°

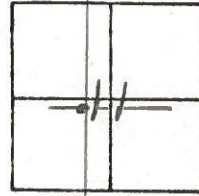
T N, R E

Personnel I. Stone

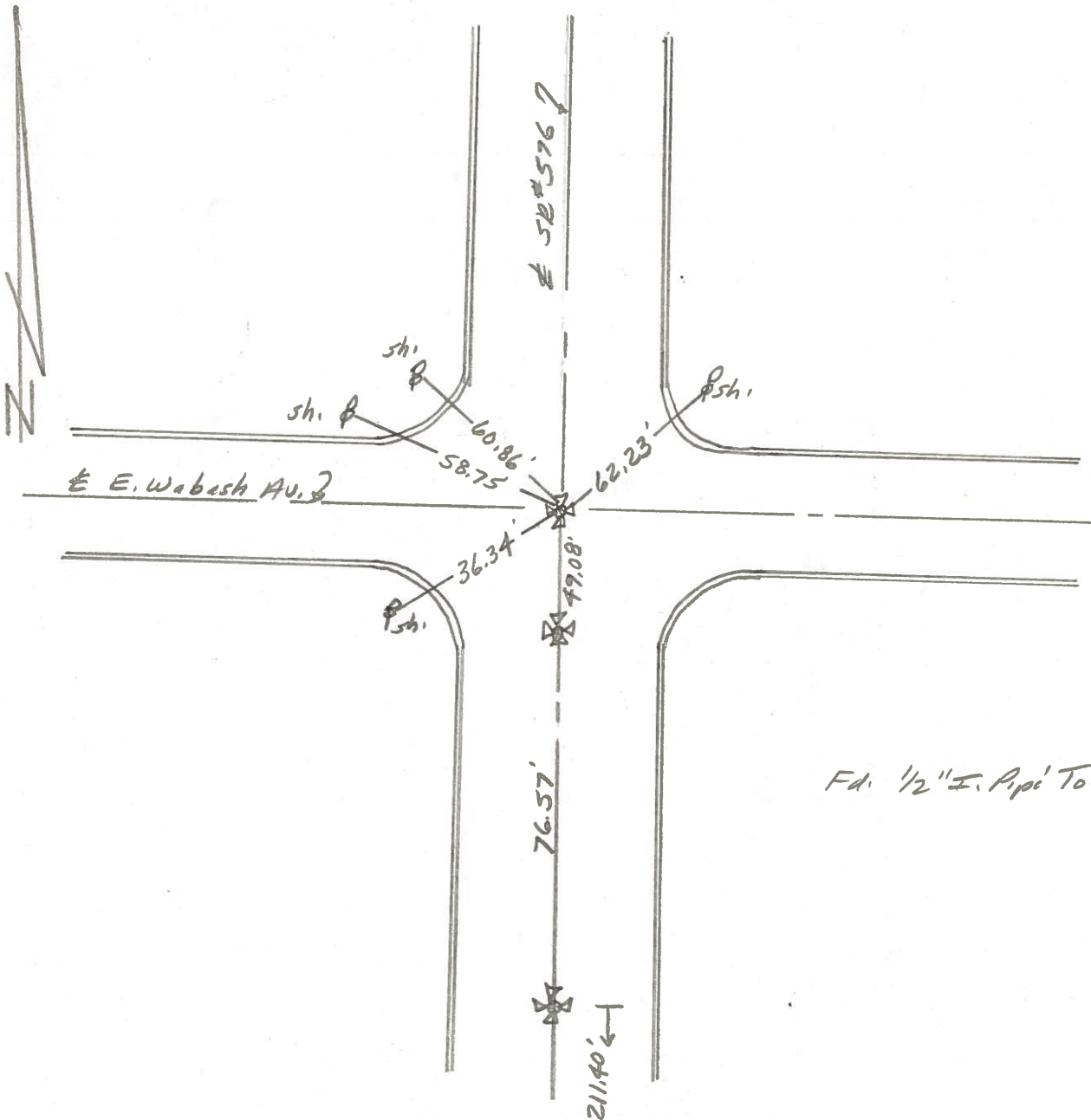
P. Neuse

D. Curtis

R. Michalak



REF. NO. **24A**



PERSONNEL TITLE PERSONNEL TITLE

Red Beach
Armbruster
Knappe
Mohler

COUNTY Williams

DATE 15 Nov. '62

S. R. 576 Relocate

WEATHER

SEC. 10.25-10.59 Montpelier

TEMP

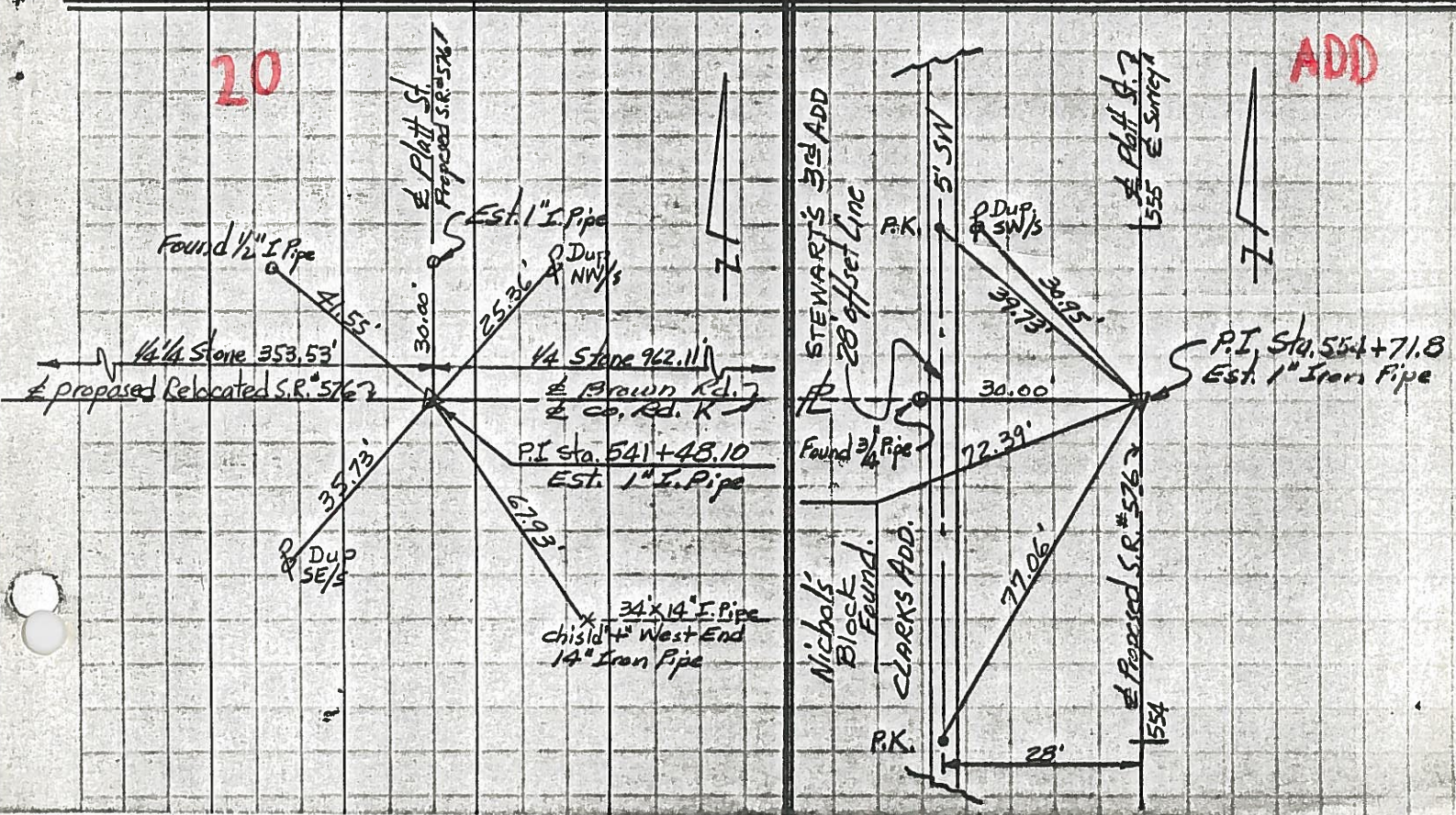
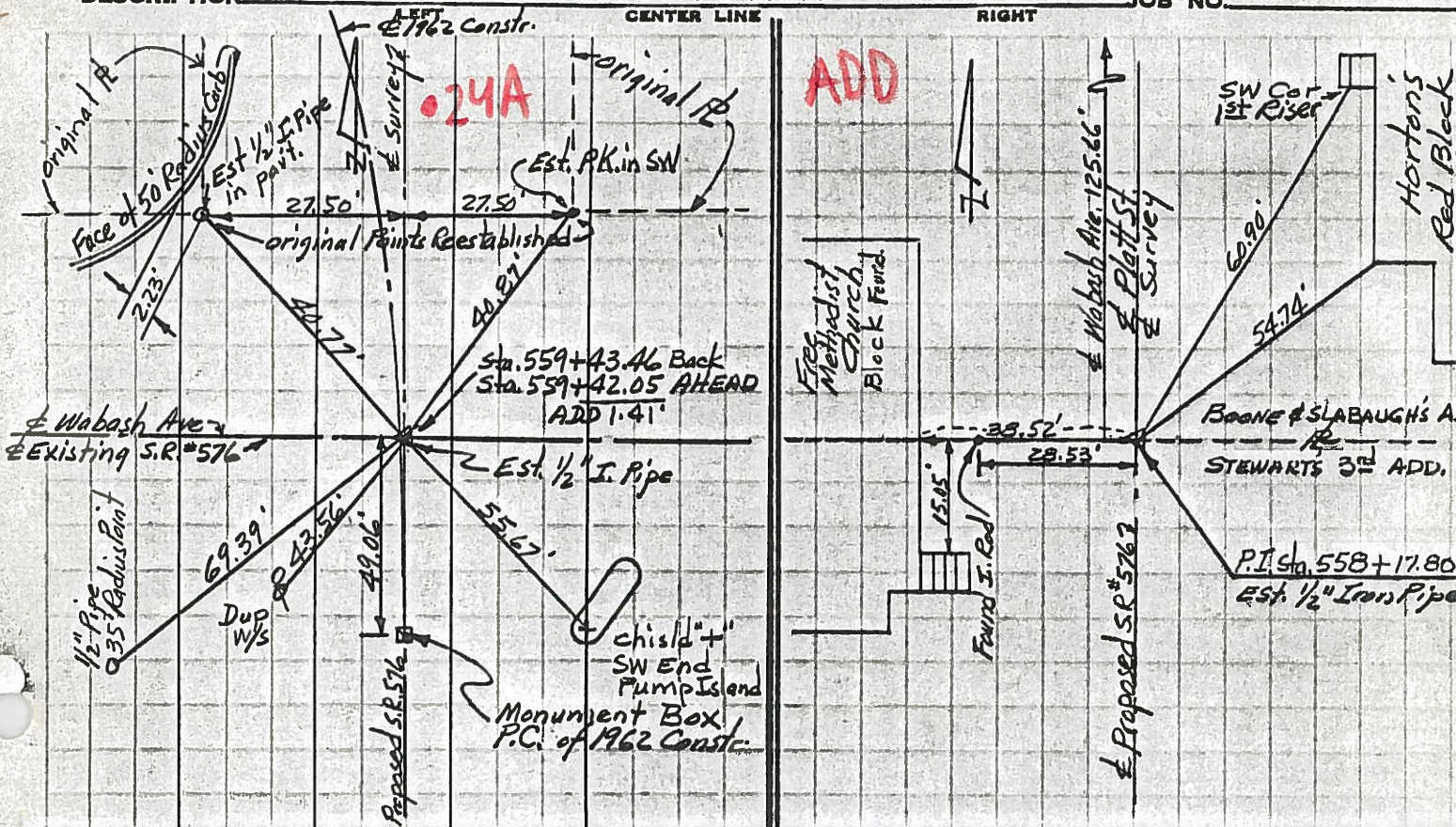
CONTROL POINTS

DESCRIPTION

CENTER LINE

RIGHT

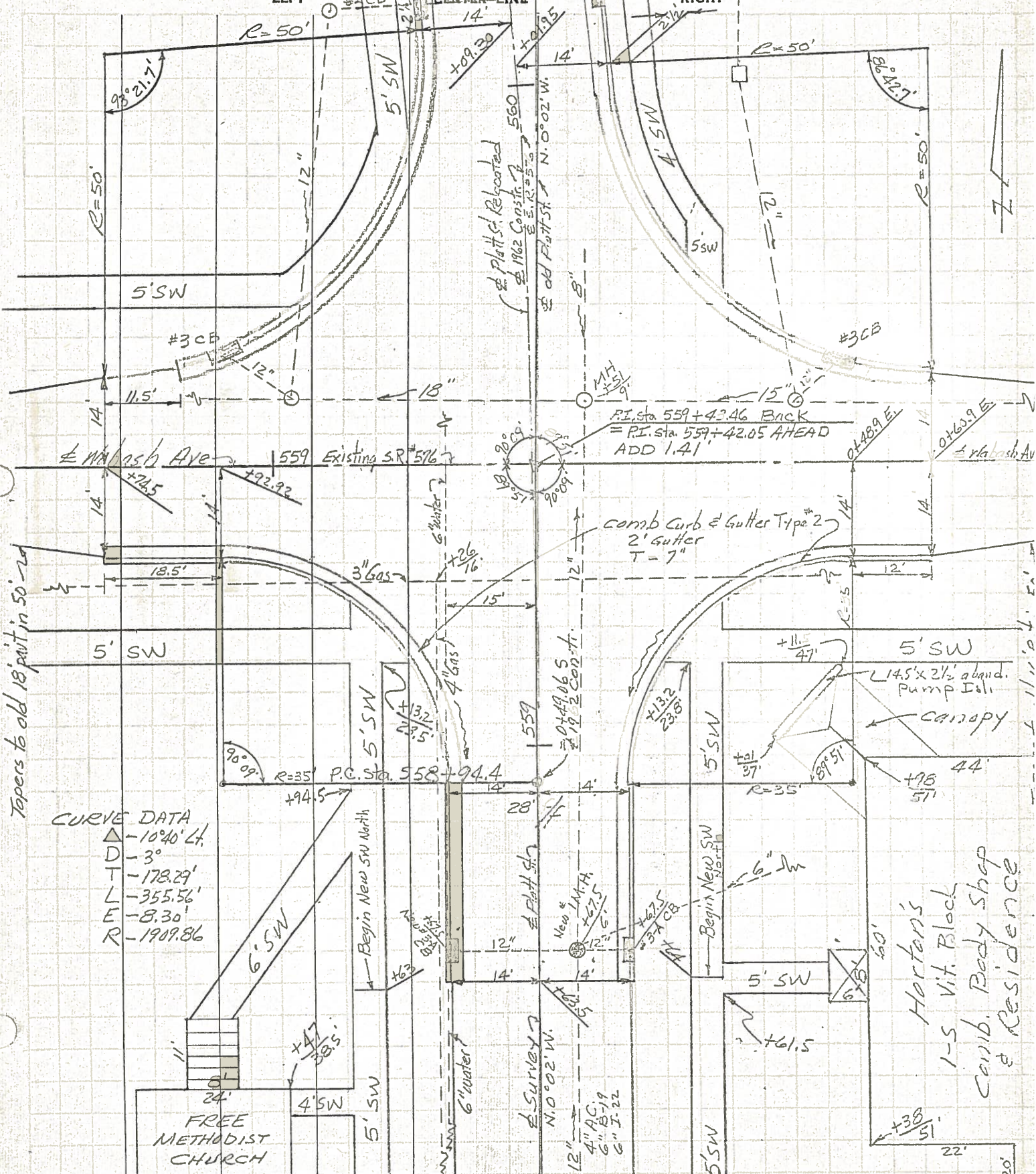
JOB NO.



PERSONNEL TITLE PERSONNEL TITLE
 Red Beach
 Armbruster
 Knope
 Mobler

COUNTY Williams DATE Nov. '62
 S. R. 576 Relocation WEATHER
 SEC. 10.25-10.59 Montpelier TEMP.

DESCRIPTION END TOPO JOB NO.



Tapers to old 18' part in 50'-20'

CURVE DATA
 Δ - 10°40' Lt.
 D - 3"
 T - 178.29'
 L - 355.56'
 E - 8.30'
 R - 1909.86

Plat. & Relocated
 of 1962 Const. of
 E.S. 10.25-10.59
 of old Plat. 51 N. 0°02' W.

P.I. Sta. 559 + 42.46 BACK
 = P.I. Sta. 559 + 42.05 AHEAD
 ADD 1.41

Horton's
 1-5 Vit. Block
 Comb. Body Shop
 & Residence

