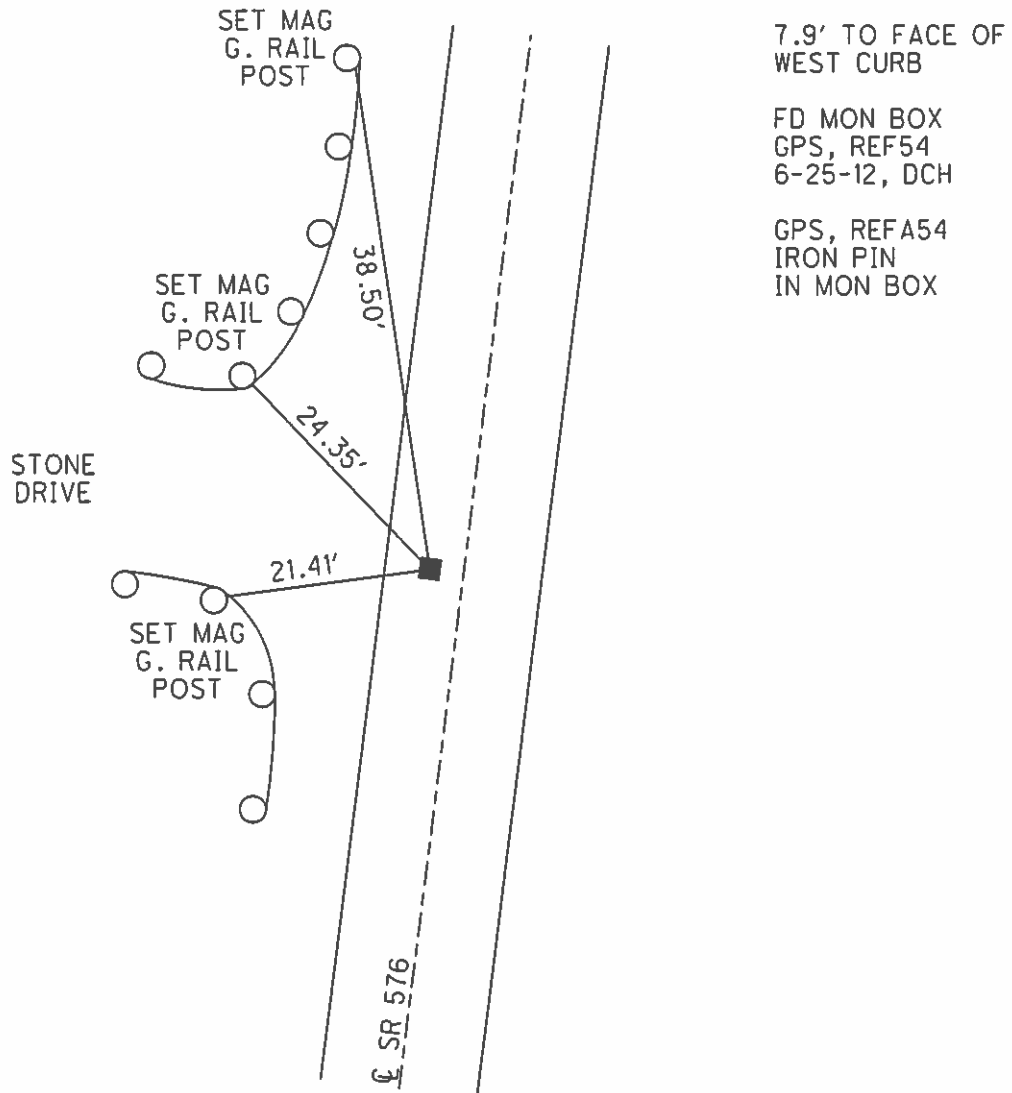
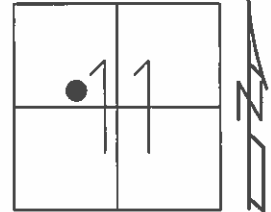


O.D.O.T. DISTRICT 2 SURVEY OFFICE (USE ONLY)

PERSONNEL	REFERENCE NO.	<u>24 D</u>	SHEET	<u>14</u>	OF	<u>32</u>
NOTES	<u>HOMAN</u>	DATE	<u>6-25-12</u>	ROUTE	<u>SR 576</u>	
H.C.	<u>ROUSOS</u>	WEATHER	<u>SUNNY</u>	COUNTY	<u>WILLIAMS</u>	
R.C.	<u>HOMAN</u>	TEMP.	<u>80°</u>	TOWNSHIP	<u>SUPERIOR</u>	
				SECTION	<u>11</u>	
				T	<u>7</u>	R
					<u>N</u>	<u>2</u>
					<u>E</u>	

TYPE MONUMENT IRON PIN IN MONBOX
 ON SURFACE - ~~BELOW~~ ON
 LEFT - ☉ PAV'T - ~~RIGHT~~ 6.1'
5.9 TO LT EDGE PAVEMENT
 S.L.M. 579+94.37

Grid: Northing: 704588.337 Easting: 1392015.033



O.D.O.T. DISTRICT 2 SURVEY OFFICE

PERSONNEL _____

REFERENCE NO. _____

SHEET 12 OF 15

NOTES LOEHRKE

H.C. CANTERBURY

DATE 10-15-93

ROUTE S.R. 576

R.C. ROMETO

WEATHER CLOUDY

COUNTY Williams

CORDES

TEMP. +70

TOWNSHIP Superior

SECTION 11

T 7 N R 2 W

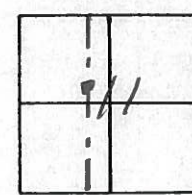
TYPE MONUMENT Mon Box

ON SURFACE - BELOW Yes

LEFT - 0 PAV'T. - RIGHT 6.1

5.9 TO LT EDGE PAVEMENT

S.L.M. SBO+79



7.9' TO FACE of
West Curb

24D

