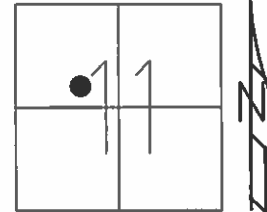


O.D.O.T. DISTRICT 2 SURVEY OFFICE (USE ONLY)

PERSONNEL \_\_\_\_\_ REFERENCE NO. 25 SHEET 15 OF 32  
 NOTES HOMAN DATE 6-25-12 ROUTE SR 576  
 H.C. ROUSOS WEATHER SUNNY COUNTY WILLIAMS  
 R.C. HOMAN TEMP. 75° TOWNSHIP SUPERIOR  
 \_\_\_\_\_ SECTION 11  
 \_\_\_\_\_ T 7 N R 2 E

TYPE MONUMENT 1/2" IRON PIPE  
 ON SURFACE - ~~BELOW~~ ON \_\_\_\_\_  
~~LEFT~~ -  $\odot$  PAV'T - RIGHT 19.2'  
 \_\_\_\_\_ TO \_\_\_\_\_ EDGE PAVEMENT  
 S.L.M. 583+52.42

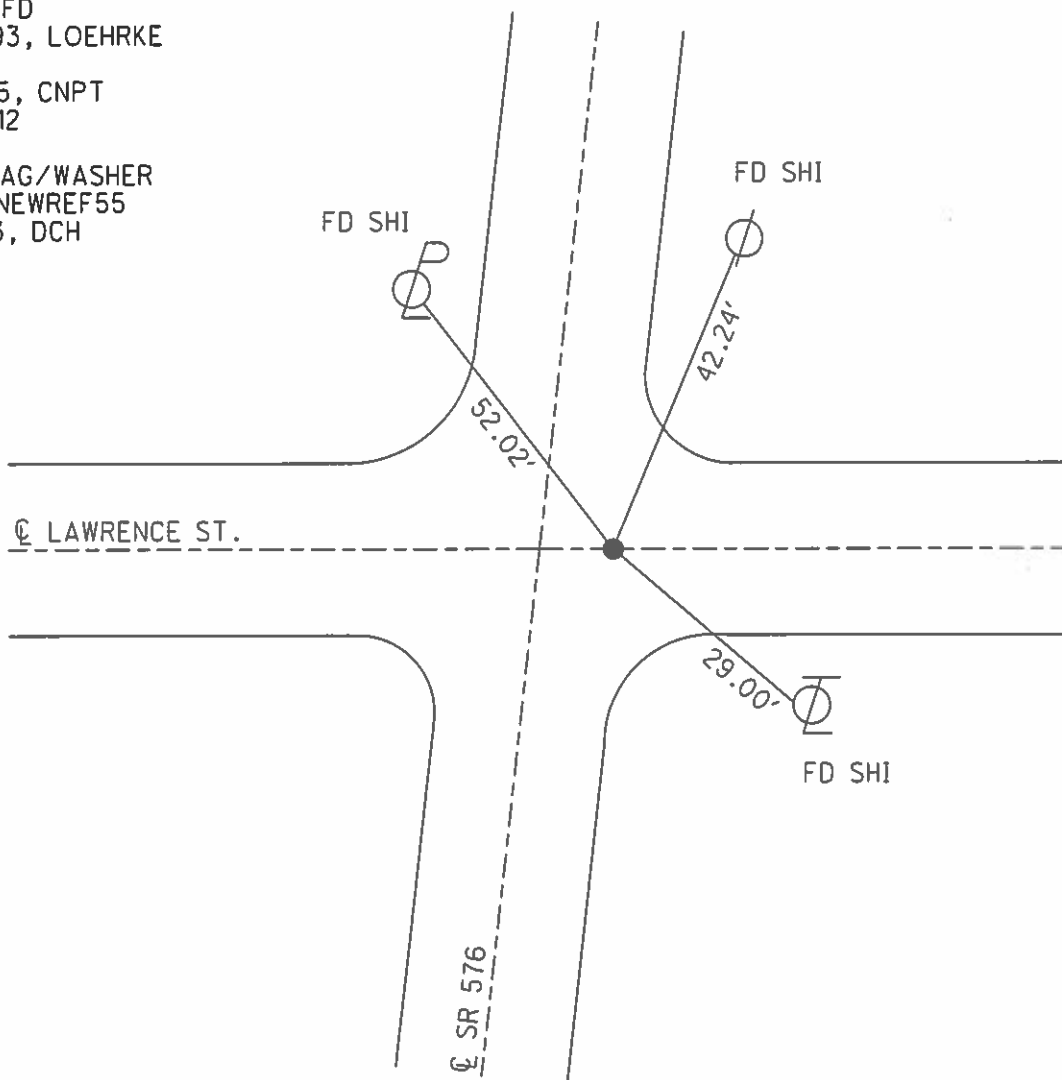


Grid: Northing: 704938.757 Easting: 1392088.421

IPIPE FD  
 6-15-93, LOEHRKE

REF 55, CNPT  
 6-25-12

SET MAG/WASHER  
 GPS, NEWREF55  
 2-5-13, DCH



# O.D.O.T. DISTRICT 2 SURVEY OFFICE

PERSONNEL \_\_\_\_\_

REFERENCE NO. \_\_\_\_\_

SHEET 13 OF 15

NOTES LOENRKE

H.C. CANTERBURY

DATE 6-15-93

ROUTE S.R. 576

R.C. ROMETO

WEATHER CLOUDY

COUNTY Williams

CORDES

TEMP. +72

TOWNSHIP Superior

SECTION 11

T 7 N R 2 W

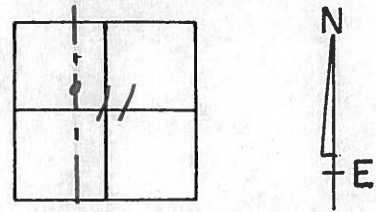
TYPE MONUMENT 1/2" IRON PIPE OK

ON SURFACE - BELOW 1"

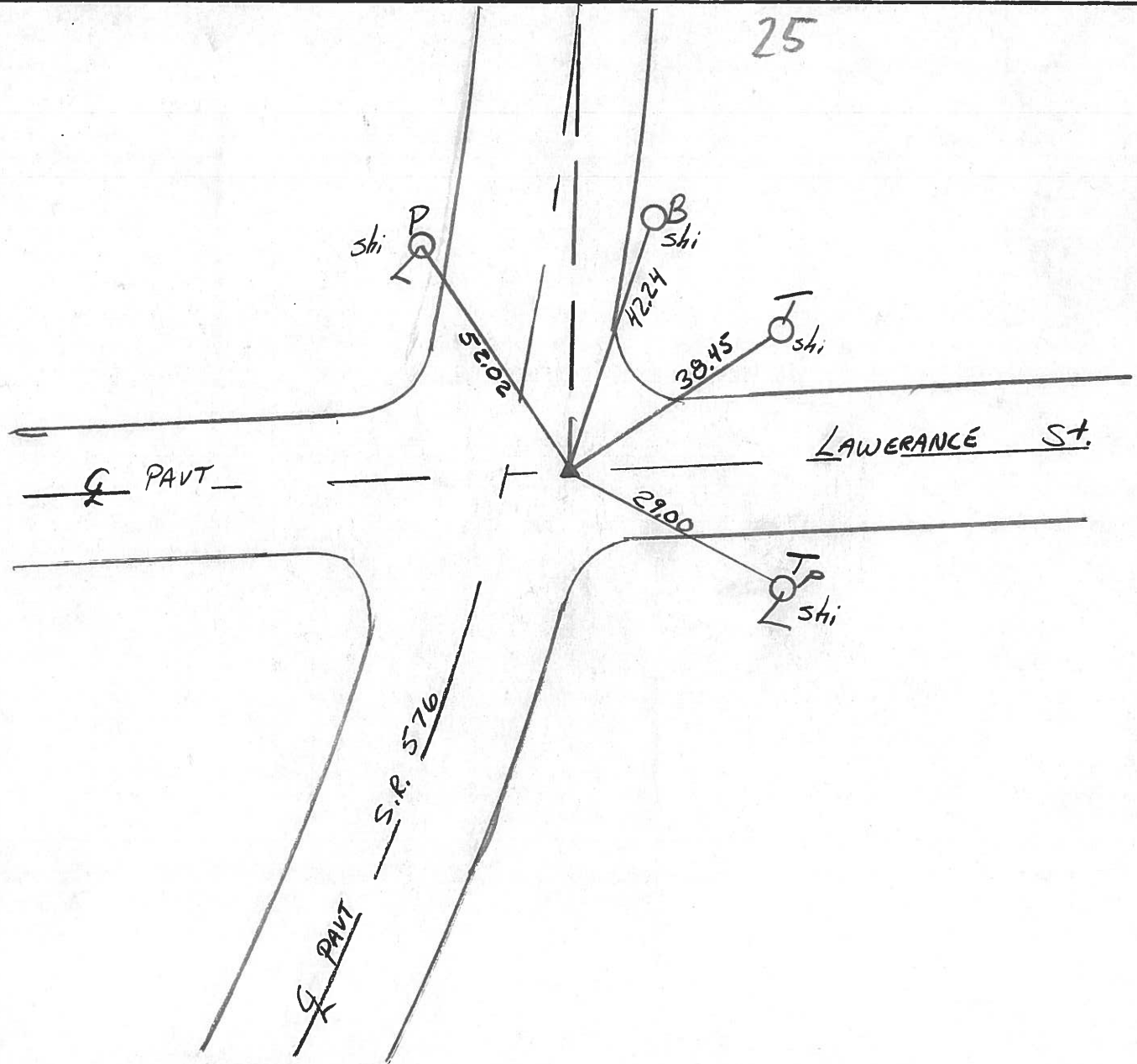
LEFT - Q PAV'T. - RIGHT 19.2

TO EDGE PAVEMENT

S.L.M. 584435



25



County Williams S.R. 576

Date 14 Oct. 80

Township Superior

Weather Cloudy

Section 11

Temp. 55°

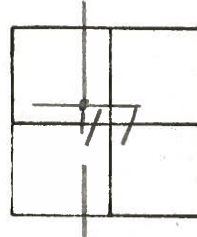
T N, R E

Personnel I. Stone

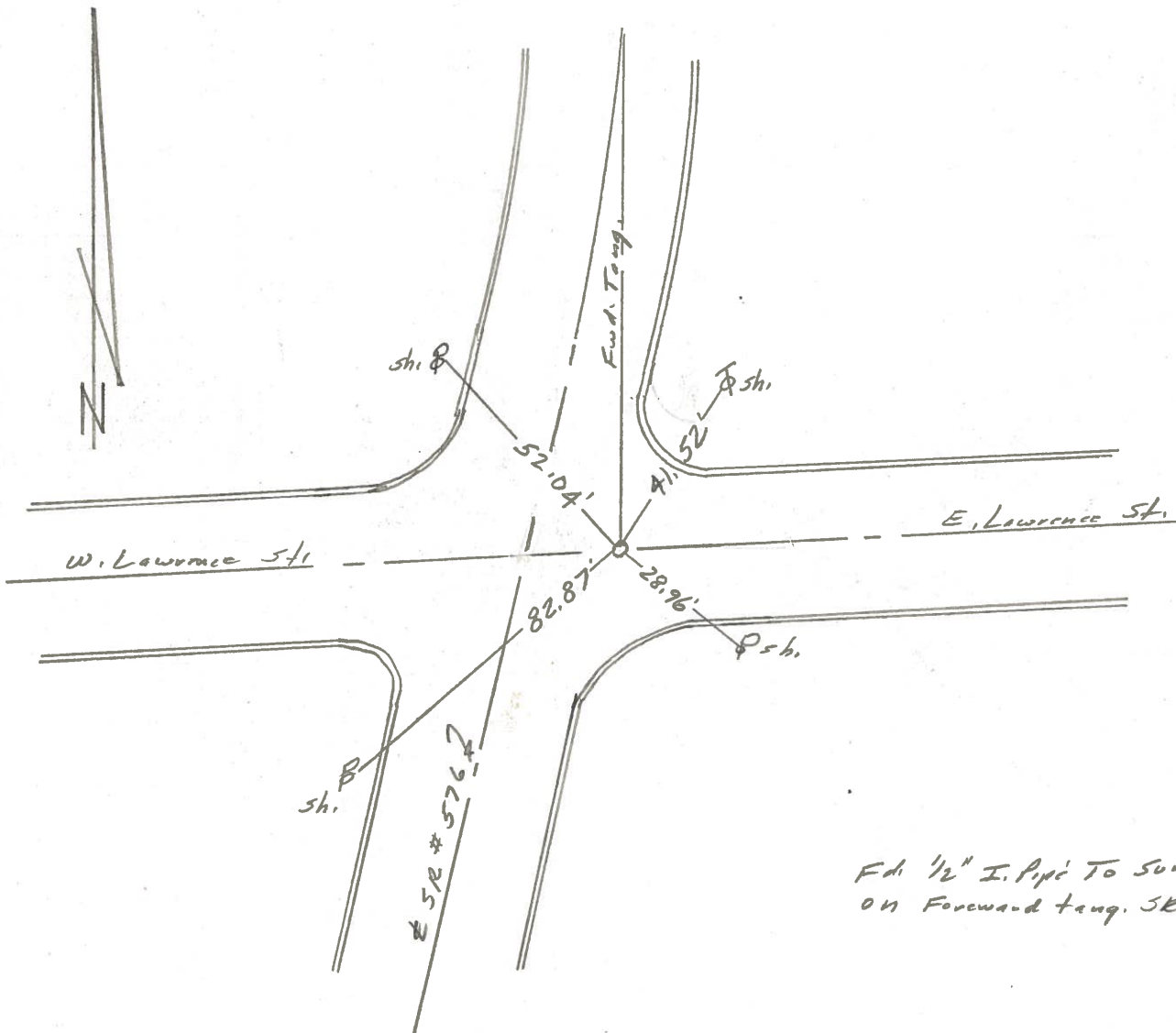
R. Michalak

P. Neuser

D. Curtis



REF. NO. 25



Fdi 1/2" I. Pipe To Surface  
on Forward tang. SR # 576