

O.D.O.T. DISTRICT 2 SURVEY OFFICE (USE ONLY)

PERSONNEL

REFERENCE NO. 34 A

SHEET 3 OF 10

NOTES NIESE DATE 7-20-21

H.C. AUBLE WEATHER SUNNY

R.C. NIESE TEMP. 75°

ROUTE SR 576

COUNTY WILLIAMS

TOWNSHIP BRIDGEWATER

SECTION 27

DWG BY RHOADES PID 99575

T 9 S R 3 W

TYPE MONUMENT MAG/WASHER

ON SURFACE - ~~BELOW~~ ON

OFFSET \varnothing PAVEMENT ON LT : RT

10.6' TO RT EDGE PAVEMENT

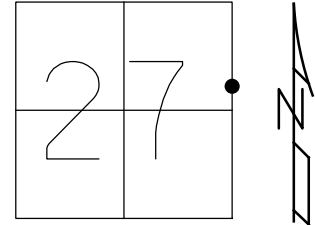
STATION: 932+59.29

HORZ.DATUM: NAD83 (2011)

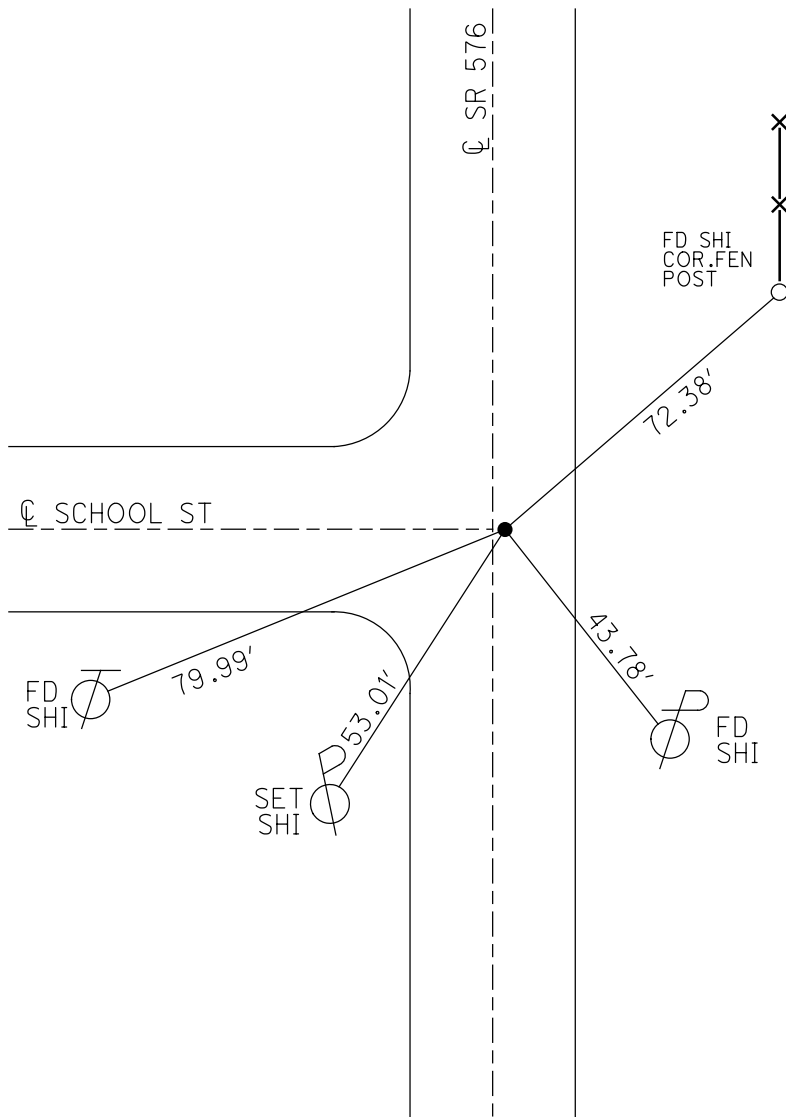
GEOID: NAVD88 2018

GRID: NORTHING: 733208.022

EASTING: 1386233.483



RECORD:
 SET P.K./WASHER
 8-26-02, MDB
 FD P.K./WASHER
 SVA134
 5/20/10, SH
 12/15/10 MC
 FD P.K./WASHER
 REFA34
 6/18/13, SDC
 FD P.K./WASHER
 REF34A
 7/20/21, DSA
 SET MAG/WASHER
 REF34A
 9/15/22, DSA



O.D.O.T. DISTRICT 2 SURVEY OFFICE (USE ONLY)

PERSONNEL _____ REFERENCE NO. 34 A SHEET 3 OF 9
 NOTES RHOADES DATE 6/18/13 ROUTE SR 576
 H.C. CODER WEATHER OVERCAST COUNTY WILLIAMS
 R.C. RHOADES TEMP. 63° TOWNSHIP BRIDGEWATER
 _____ SECTION 27
 _____ T 9 S R 3 W

TYPE MONUMENT P.K./WASHER

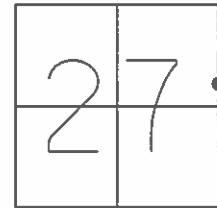
ON SURFACE - ~~BELOW~~ ON _____

~~LEFT~~ - Q PAV'T = ~~RIGHT~~ ON, 2' N OF Q WEST

10.6' TO RT EDGE PAVEMENT

S.L.M. 932+59.29

GRID: NORTHING: 733208.005 EASTING: 1386233.415

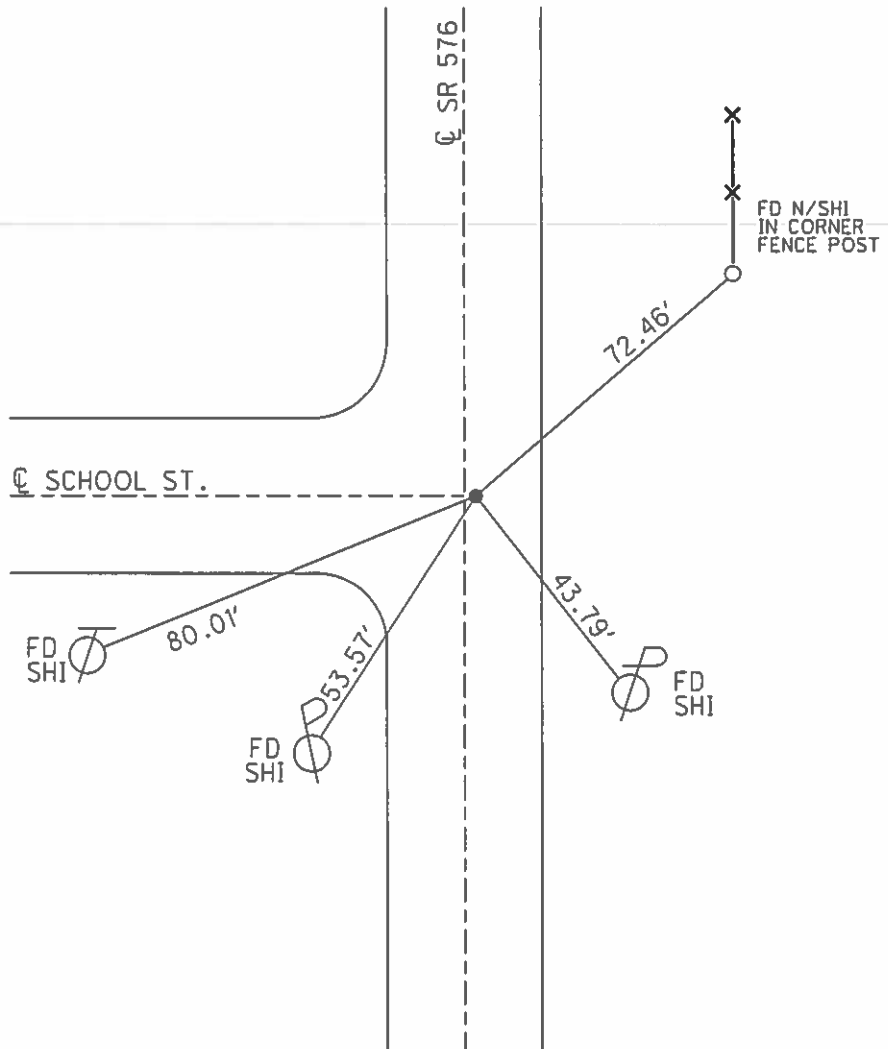


RESET PK & WASHER
8-26-02 MDB

GPS SVA134
5/20/10, SH

CHIPPED OUT POINT
12/15/10 MC, SH

FD P.K./WASHER
GPS, REFA34
6/18/13, SDC



O.D.O.T. DISTRICT 2 SURVEY OFFICE

PERSONNEL _____

REFERENCE NO. 34-A

SHEET 3 OF 9

NOTES HUSS

DATE 5/20/10

ROUTE 576

H.C. HUSS

WEATHER SUNNY

COUNTY WILLIAMS

R.C. FINTEL

TEMP. 65°

TOWNSHIP BRIDGEWATER

SECTION 27

T 9 S R 3 W

TYPE MONUMENT P.K./WASHER

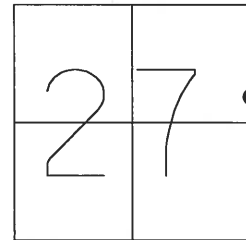
ON SURFACE ~~-BELOW~~ ON

~~LEFT~~ - C PAV'T ~~-RIGHT~~ ON

10.6' TO RT EDGE PAVEMENT

S.L.M. 932+80 2' N. OF CL. WEST

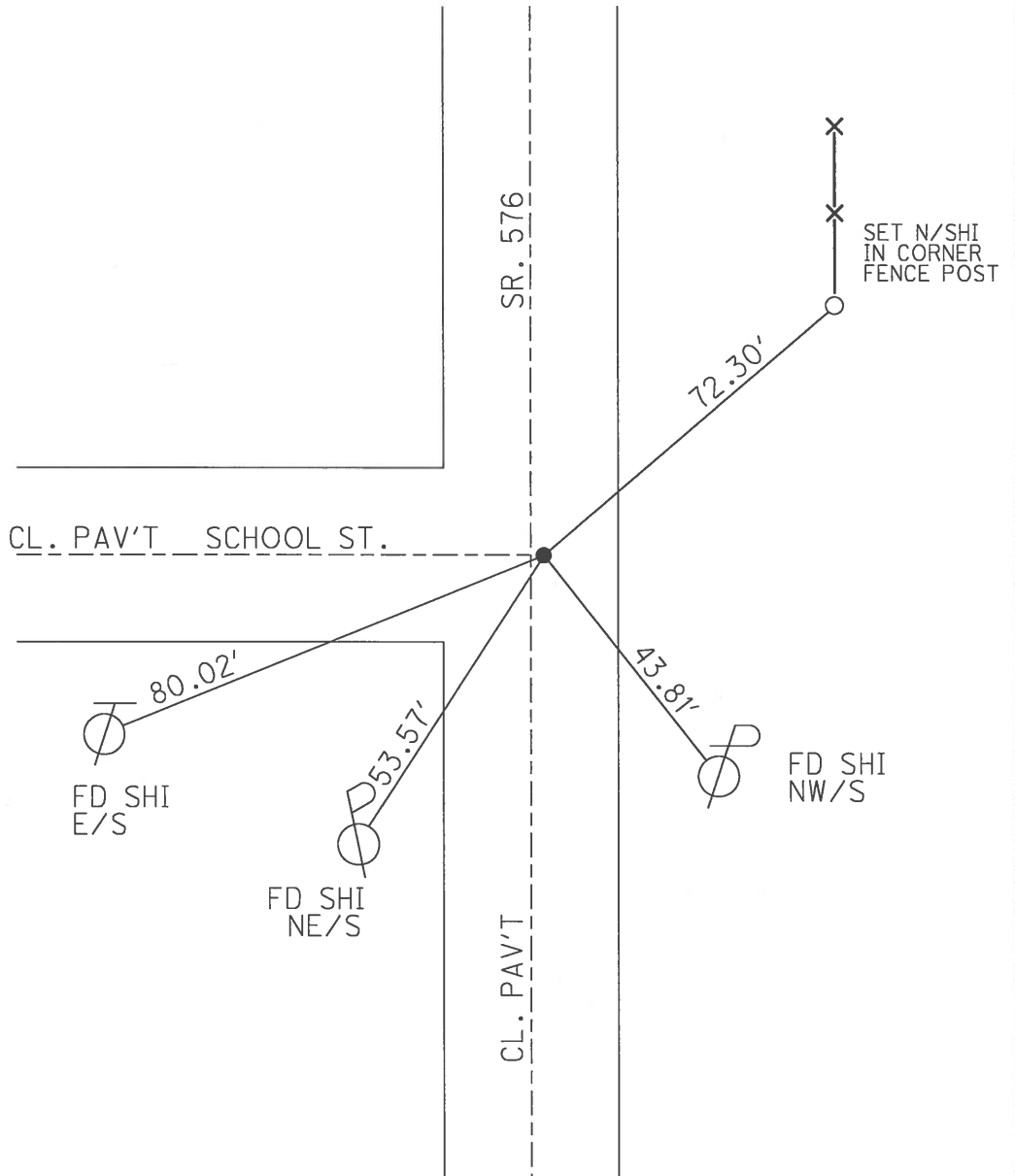
Grid: Northing: 733208.005 Easting: 1386233.415



RESET PK & WASHER
8-26-02 MDB

GPS SVA134
5/20/10, SH

CHIPPED OUT POINT
12/15/10 MC, SH



O.D.O.T. DISTRICT 2 SURVEY OFFICE

PERSONNEL

REFERENCE NO. 34-A

SHEET 3 OF 9

NOTES BARNHISEL

DATE 5-18-02

ROUTE 576

H.C. MOSER

WEATHER CLOUDY

COUNTY WILLIAMS

R.C. BARNHISEL

TEMP. +50°

TOWNSHIP BRIDGEWATER

SECTION 27

T 9 S R 3 W

TYPE MONUMENT PK NAIL

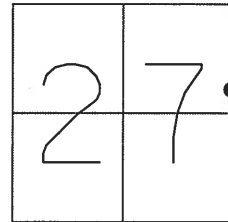
ON SURFACE ~~-BELOW~~ YES

~~LEFT - C~~ PAV'T ~~-RIGHT~~ YES

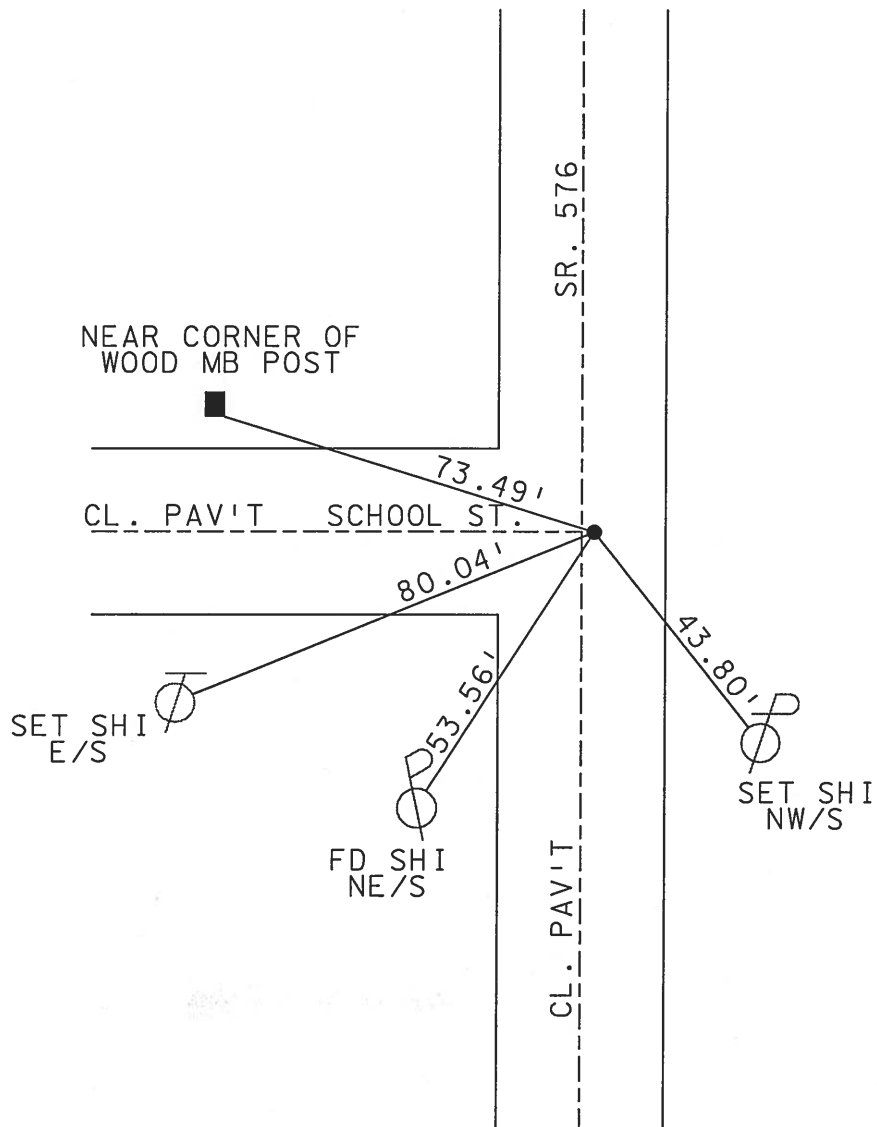
10.6' TO RT EDGE PAVEMENT

S.L.M. 932+80

2' N. OF CL. WEST



RESET PK & WASHER
8-26-02
MDB



O.D.O.T. DISTRICT 2 SURVEY OFFICE

PERSONNEL _____

REFERENCE NO. 37-17

SHEET 2 OF _____

NOTES 1. Stone

H.C. D. Curtis

R.C. E. Licu

DATE 8 May 90

WEATHER Mild

TEMP. 75°

ROUTE SR#576

COUNTY Williams

TOWNSHIP Bridgewater

SECTION _____

T _____ R _____

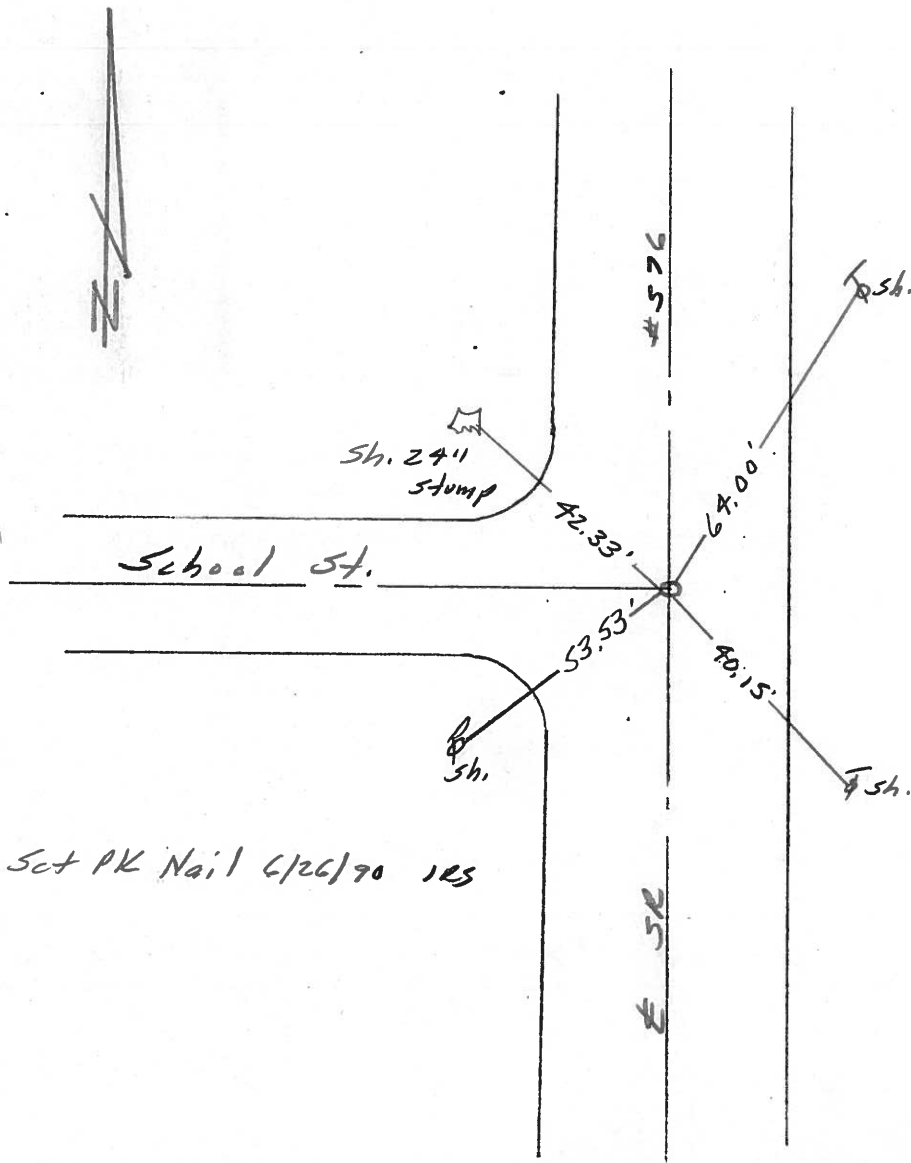
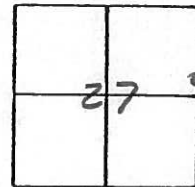
TYPE MONUMENT PK Nail

ON SURFACE - BELOW Surface

LEFT - & PAV'T. - RIGHT _____

_____ TO _____ EDGE PAVEMENT

S.L.M. 932+70



County Williams S.R. #576

Date 16 July 84

Township Bridgewater

Weather Sunny

Section 27

Temp. 80°

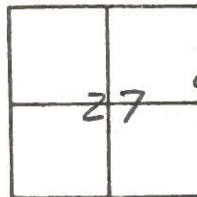
T N, R E

Personnel L. Stone

P. Neuser

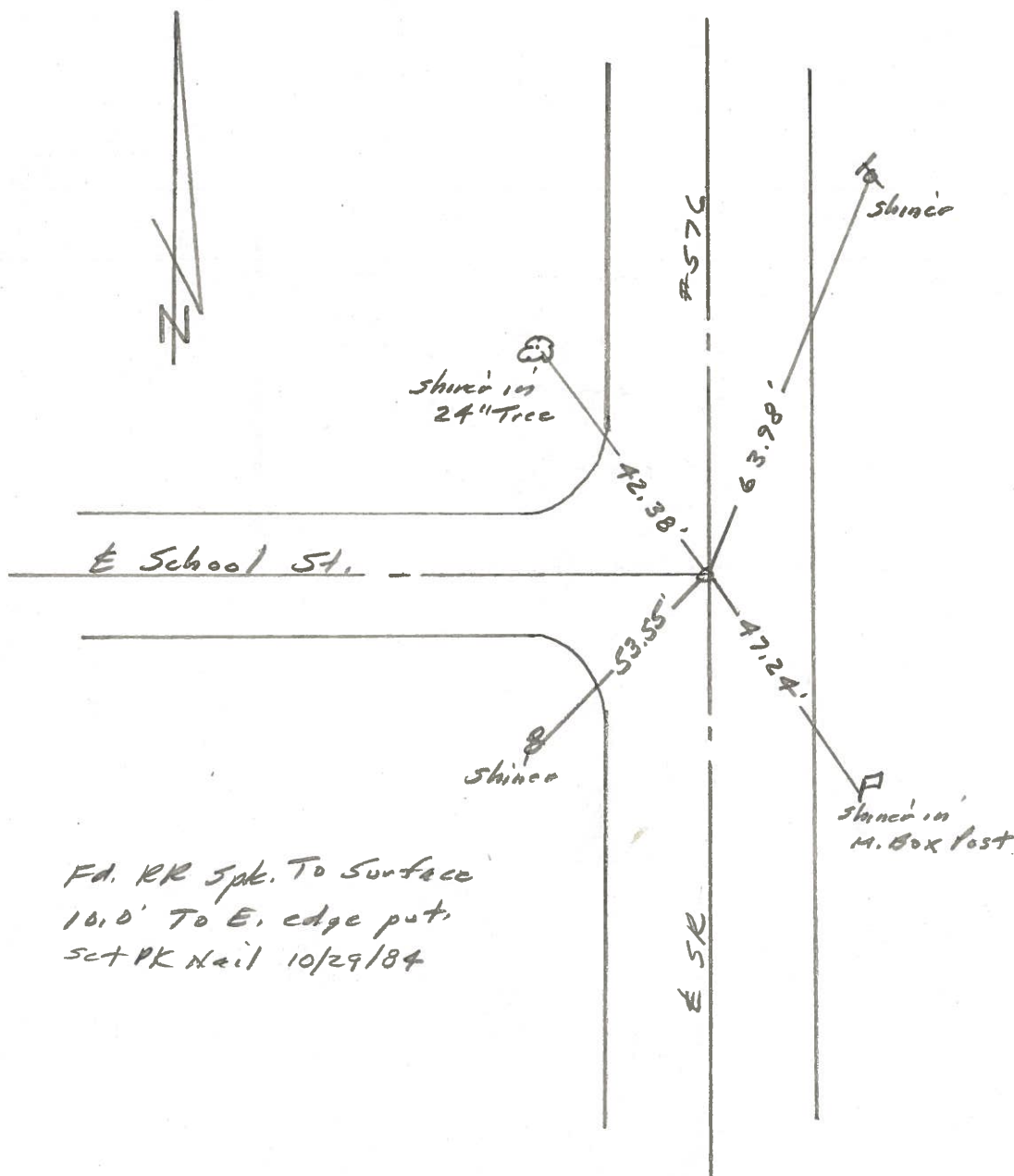
R. Michalak

D. Curtis



SLM STA. 932+72

REF. NO. 34-A



Fd. RR Spk. To Surface
 10.0' To E. edge put
 set PK Nail 10/29/84