

O.D.O.T. DISTRICT 2 SURVEY OFFICE (USE ONLY)

PERSONNEL

REFERENCE NO. 36

SHEET 5 OF 10

NOTES NIESE

DATE 7-20-21

ROUTE SR 576

H.C. AUBLE

WEATHER SUNNY

COUNTY WILLIAMS

R.C. NIESE

TEMP. 75°

TOWNSHIP BRIDGEWATER

SECTION 23

DWG BY RHOADES

PID 99575

T 9 S R 3 W

TYPE MONUMENT MAG/WASHER

ON SURFACE - ~~BELOW~~ ON

OFFSET ☉ PAVEMENT 3.6' ~~±~~ : RT

6.8' TO RT EDGE PAVEMENT

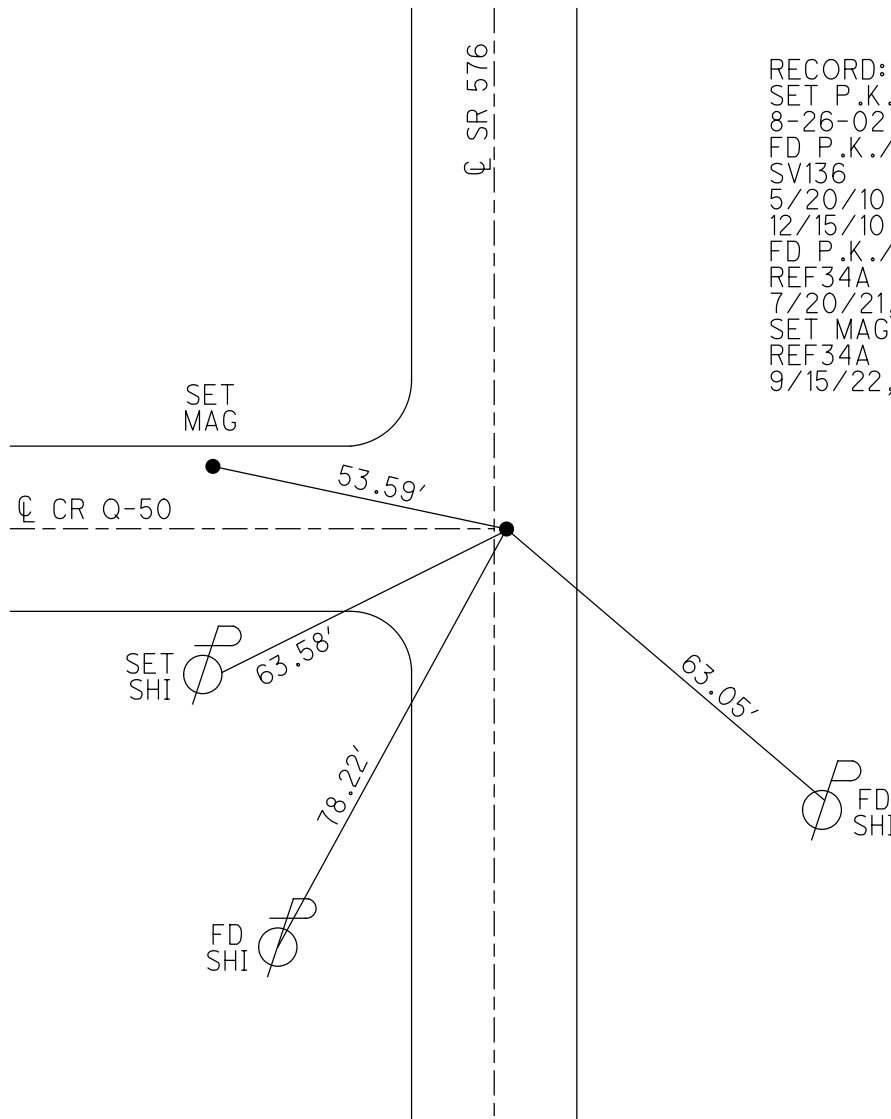
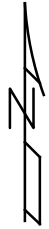
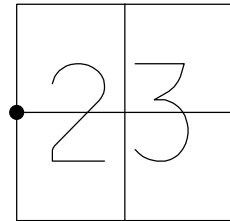
STATION: 981+11

HORIZ.DATUM: NAD83 (2011)

GEOID: NAVD88 2018

GRID: NORTHING: 737916.039

EASTING: 1386343.757



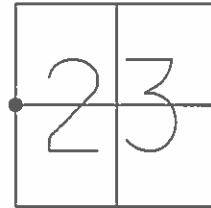
RECORD:  
 SET P.K./WASHER  
 8-26-02, MDB  
 FD P.K./WASHER  
 SV136  
 5/20/10, SH  
 12/15/10 MC, SH  
 FD P.K./WASHER  
 REF34A  
 7/20/21, DSA  
 SET MAG/WASHER  
 REF34A  
 9/15/22, DSA

O.D.O.T. DISTRICT 2 SURVEY OFFICE (USE ONLY)

PERSONNEL \_\_\_\_\_ REFERENCE NO. 36 SHEET 5 OF 9

NOTES HUSS DATE 5/20/10 ROUTE SR 576  
 H.C. HUSS WEATHER CLEAR/FAIR COUNTY WILLIAMS  
 R.C. FINTEL TEMP. 65° TOWNSHIP BRIDGEWATER  
 SECTION 23  
 T 9 S R 3 W

TYPE MONUMENT P.K./WASHER  
 ON SURFACE - ~~BELOW~~ ON  
~~LEFT~~ - ☉ PAV'T - RIGHT 3.6'  
6.8' TO RT EDGE PAVEMENT  
 S.L.M. 981+11

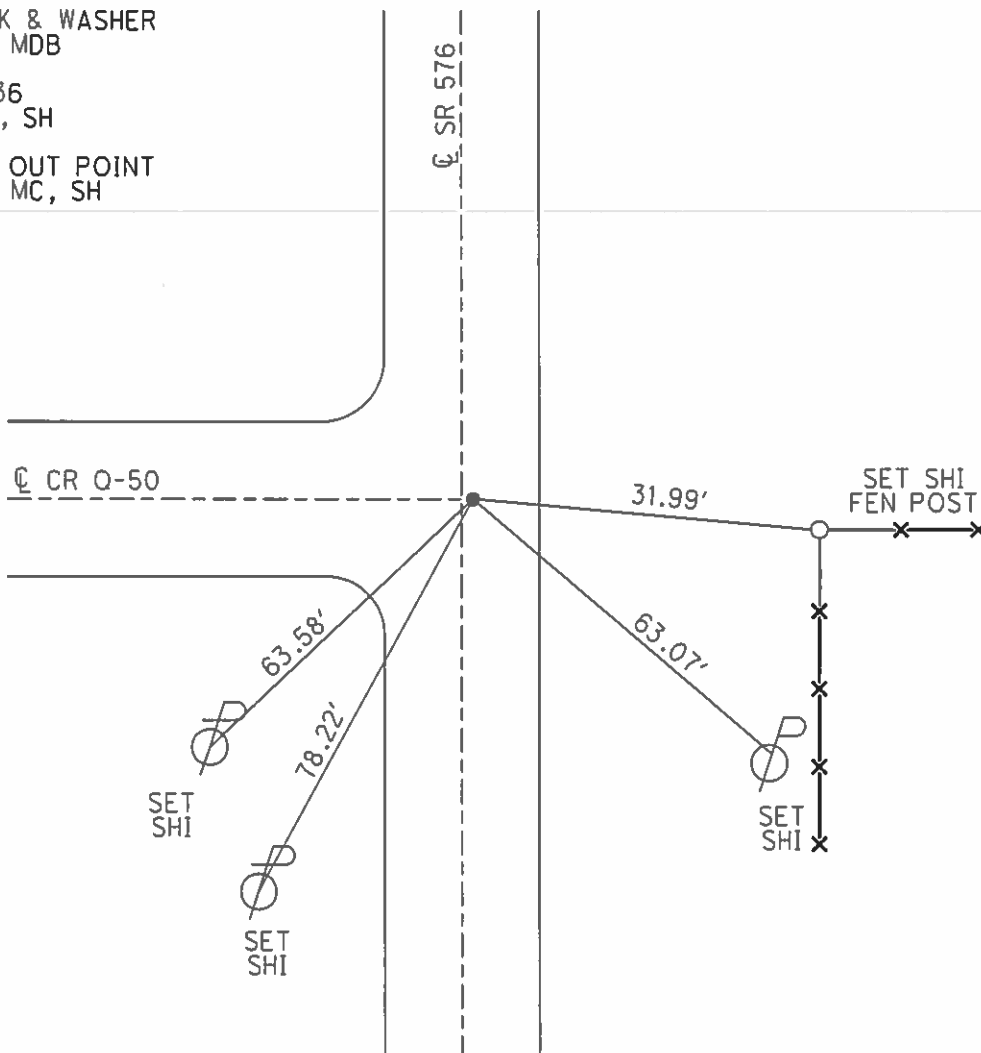


GRID: NORTHING: 737915.990 EASTING: 1386343.734

RESET PK & WASHER  
 8-26-02 MDB

GPS SV136  
 5/20/10, SH

CHIPPED OUT POINT  
 12/15/10 MC, SH



O.D.O.T. DISTRICT 2 SURVEY OFFICE

PERSONNEL

REFERENCE NO. 36

SHEET 5 OF 9

NOTES HUSS

DATE 5/20/10

ROUTE 576

H.C. HUSS

WEATHER CLEAR/FAIR

COUNTY WILLIAMS

R.C. FINTEL

TEMP. 65°

TOWNSHIP BRIDGEWATER

SECTION 23

T 9 S R 3 W

TYPE MONUMENT P.K./WASHER

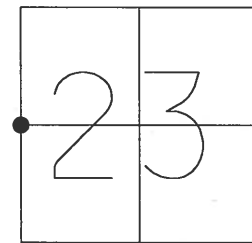
ON SURFACE - ~~BELOW~~ ON

~~LEFT~~ - CL PAV'T - RIGHT 3.6'

6.8' TO RT EDGE PAVEMENT

S.L.M. 981+11

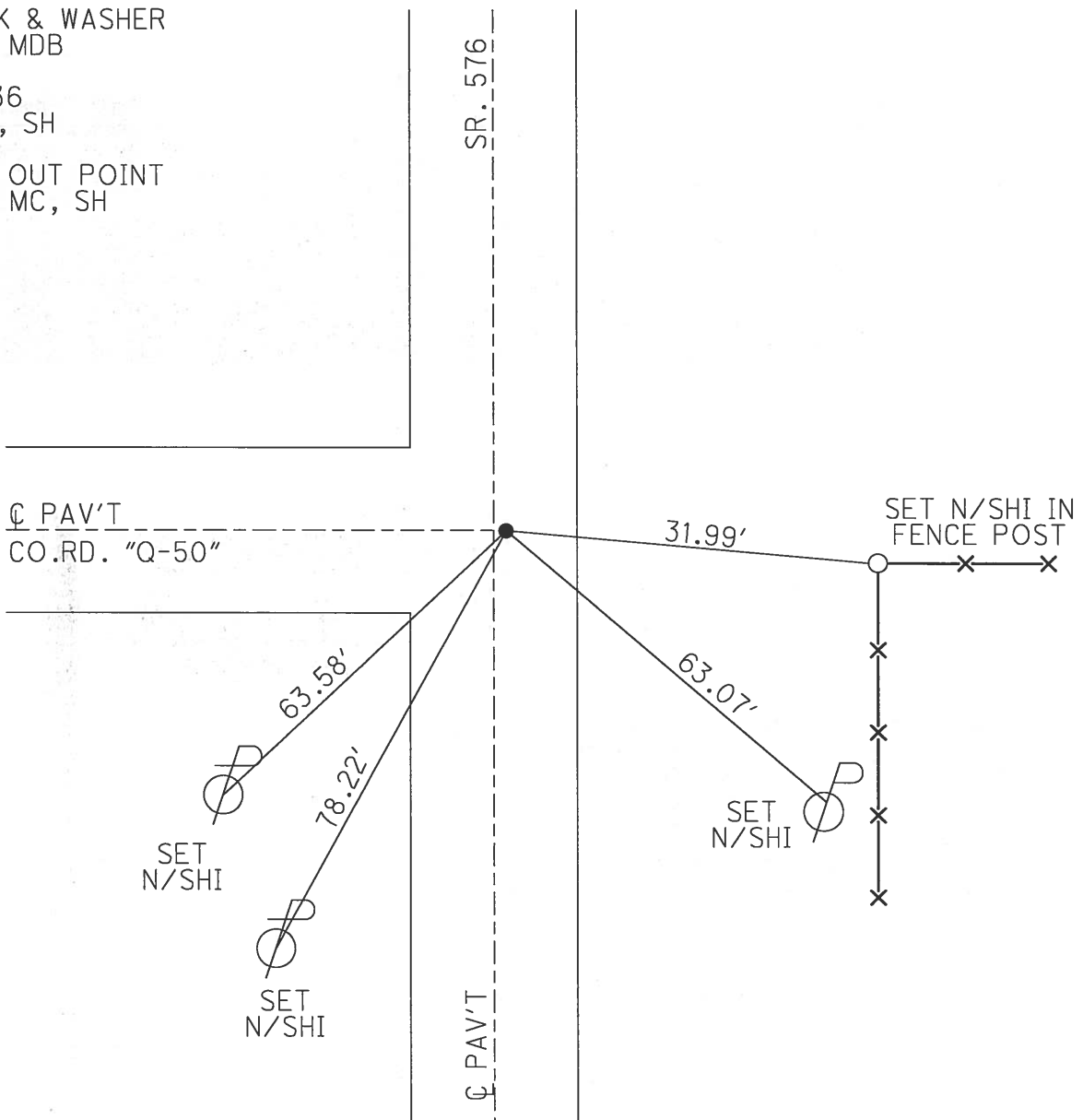
Grid: Northing: 737915.990 Easting: 1386343.734



RESET PK & WASHER  
8-26-02 MDB

GPS SV136  
5/20/10, SH

CHIPPED OUT POINT  
12/15/10 MC, SH



O.D.O.T. DISTRICT 2 SURVEY OFFICE

PERSONNEL

REFERENCE NO. 36

SHEET 5 OF 9

NOTES BARNHISEL

DATE 5-18-02

ROUTE 576

H.C. MOSER

WEATHER CLOUDY

COUNTY WILLIAMS

R.C. BARNHISEL

TEMP. +50°

TOWNSHIP BRIDGEWATER

SECTION 23

T 9 S R 3 W

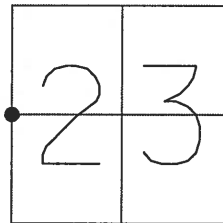
TYPE MONUMENT PK NAIL

ON SURFACE ~~-BELOW~~ YES

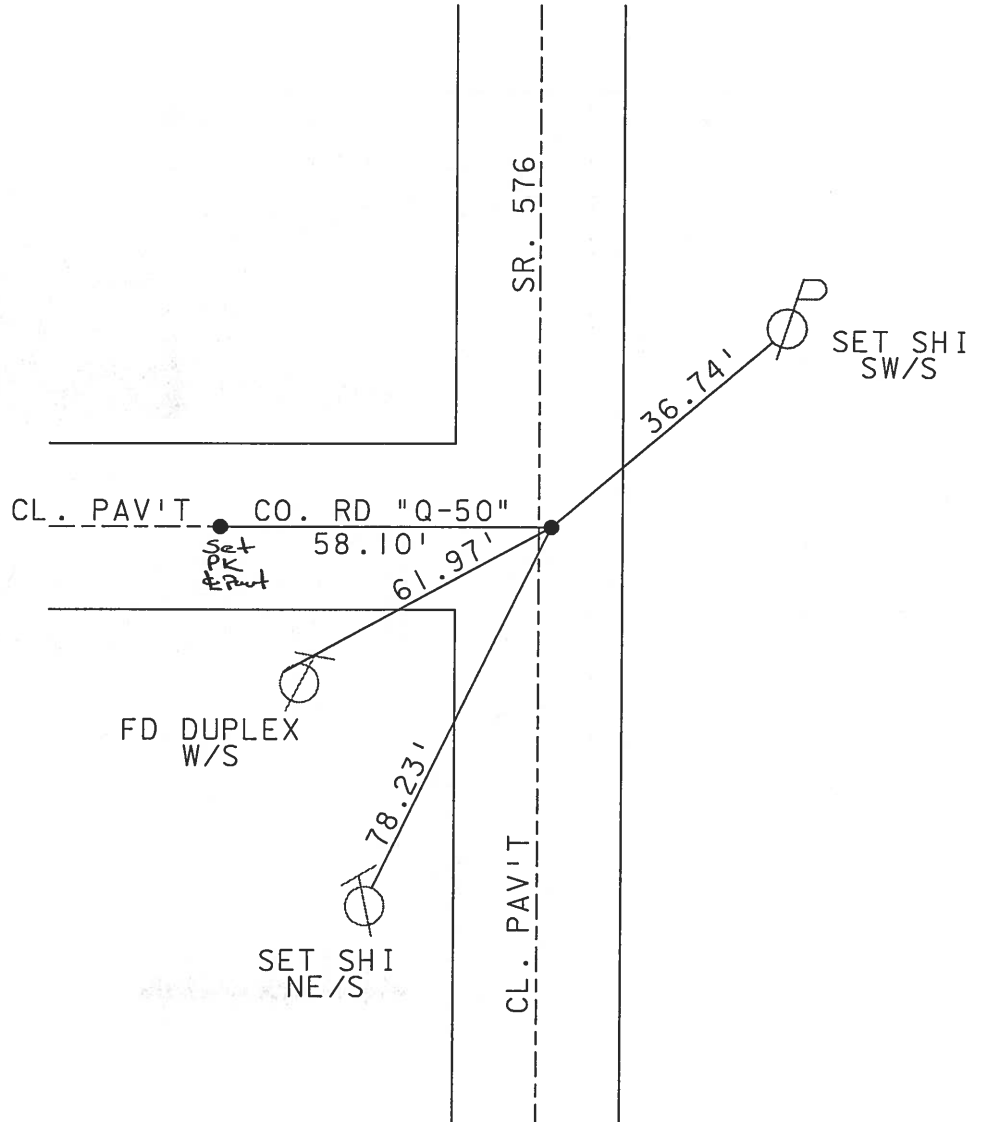
~~LEFT~~ - Q PAV'T - RIGHT 3.2'

6.8' TO RT EDGE PAVEMENT

S.L.M. 979+98



RESET PK & WASHER  
8-26-02  
MDB



# O.D.O.T. DISTRICT 2 SURVEY OFFICE

PERSONNEL

REFERENCE NO. 36

SHEET 4 OF       

NOTES 1 Stone

H.C. D. Curtis

R.C. E. Lieu

DATE 8 May 90

WEATHER Mild

TEMP. 73°

ROUTE SR# 576

COUNTY Williams

TOWNSHIP Bridgewater

SECTION 23

T        R       

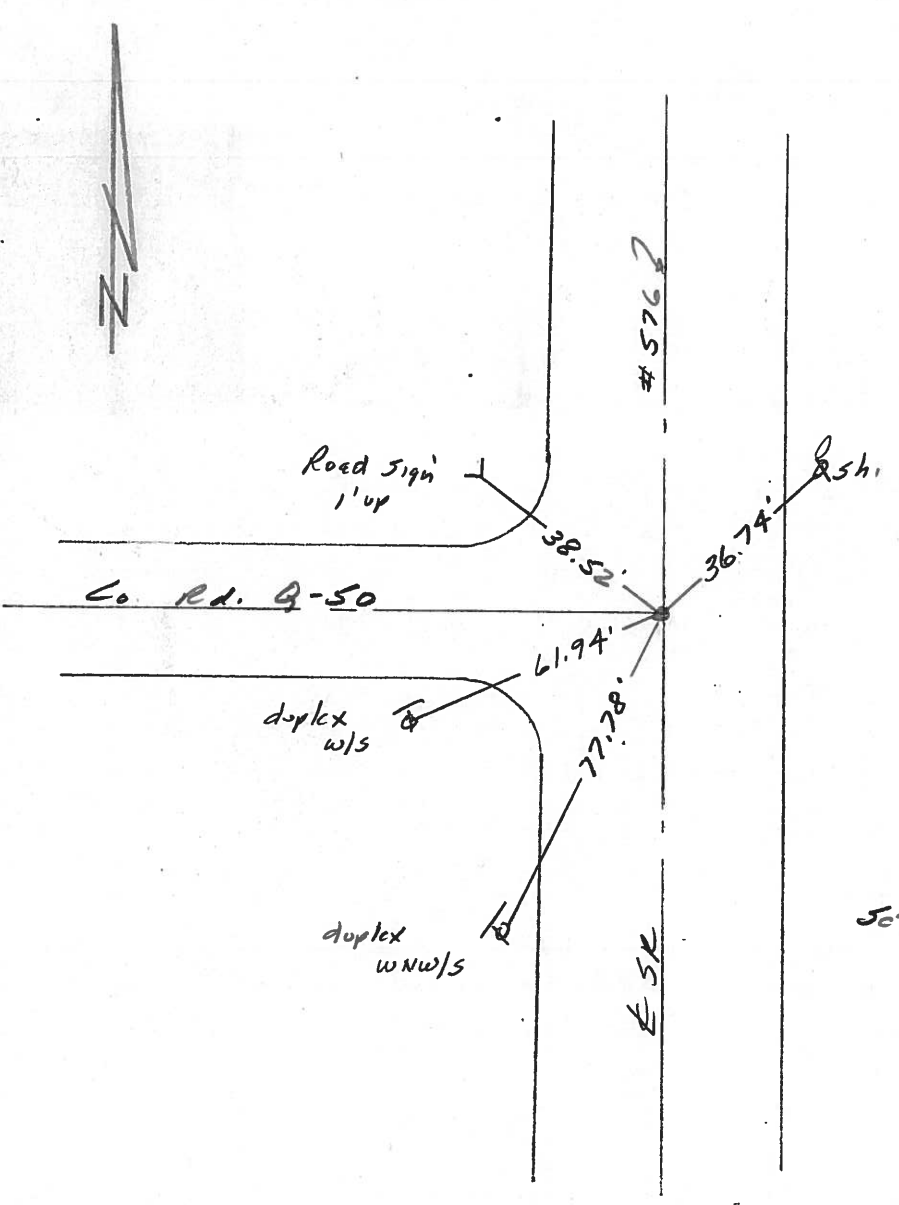
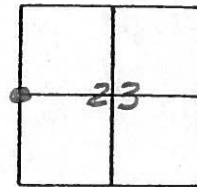
TYPE MONUMENT PK Nail

ON SURFACE - BELOW Surface

LEFT - ☉ PAV'T. - RIGHT       

       TO        EDGE PAVEMENT

S.L.M. 979+81



Set PK Nail 6/26/90

County Williams S.R. #576

Date 16 July 84

Township Bridgewater

Weather Sunny

Section 22-23

Temp. 80°

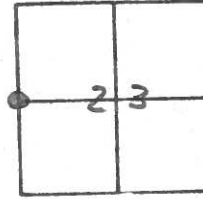
T N, R E

Personnel L. Stone

P. Neuser

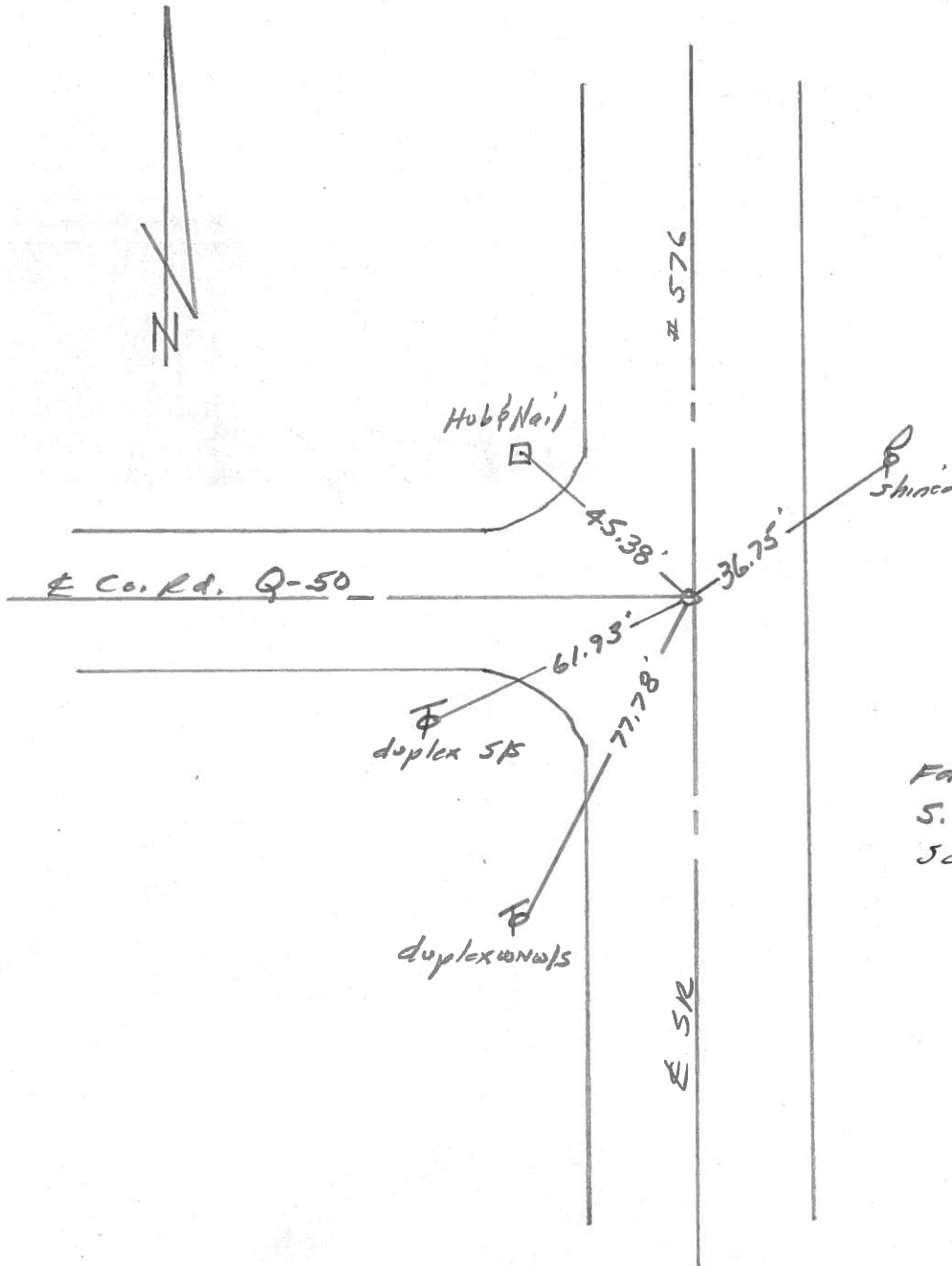
R. Michalek

D. Curtis



SLM STA. 979483

REF. NO. 36



Fd. 3/4" I. Pipe To Surface  
 5.8' To E. edge put.  
 Set PK Nail 10/29/89

PERSONNEL TITLE PERSONNEL TITLE

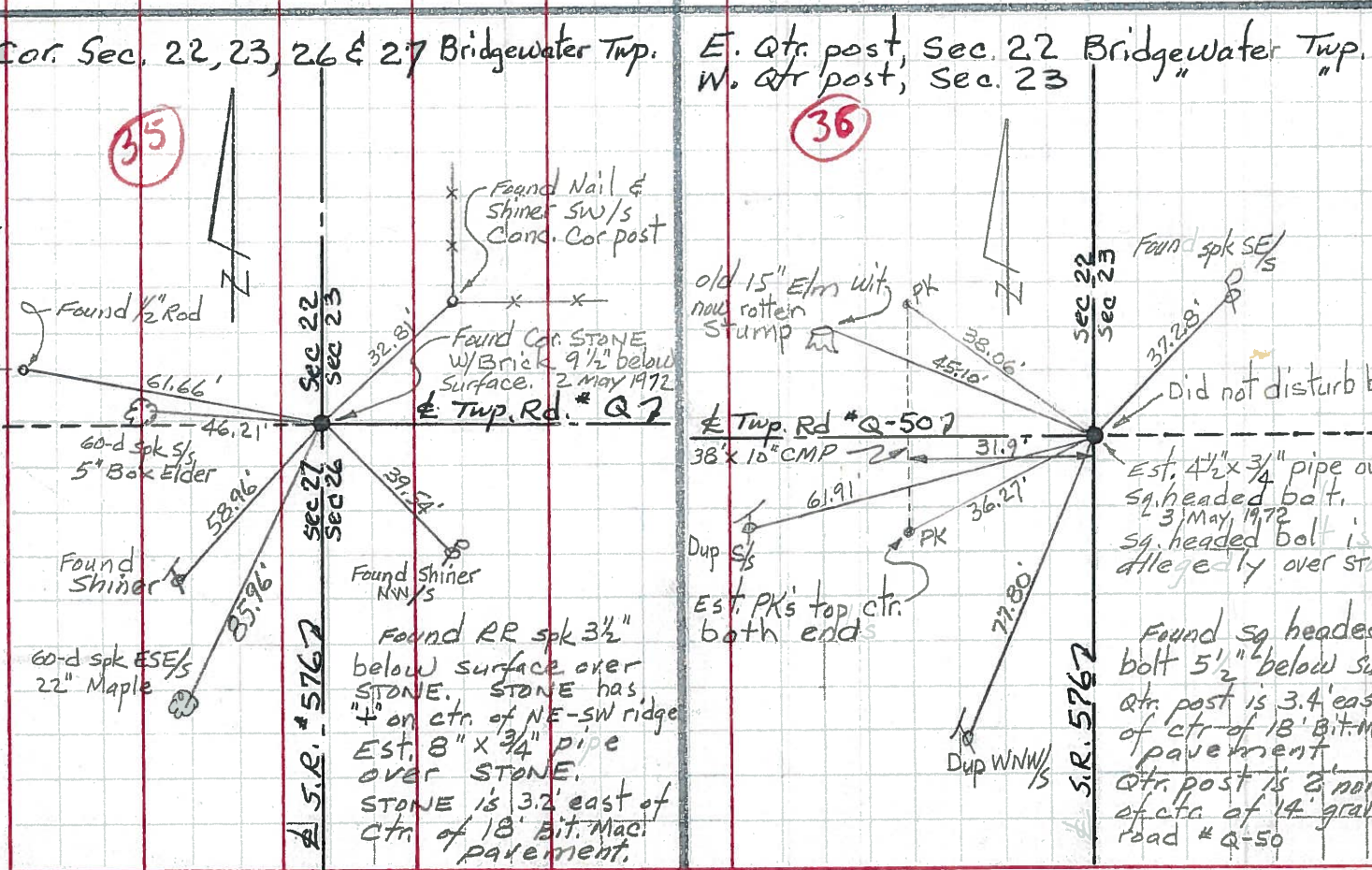
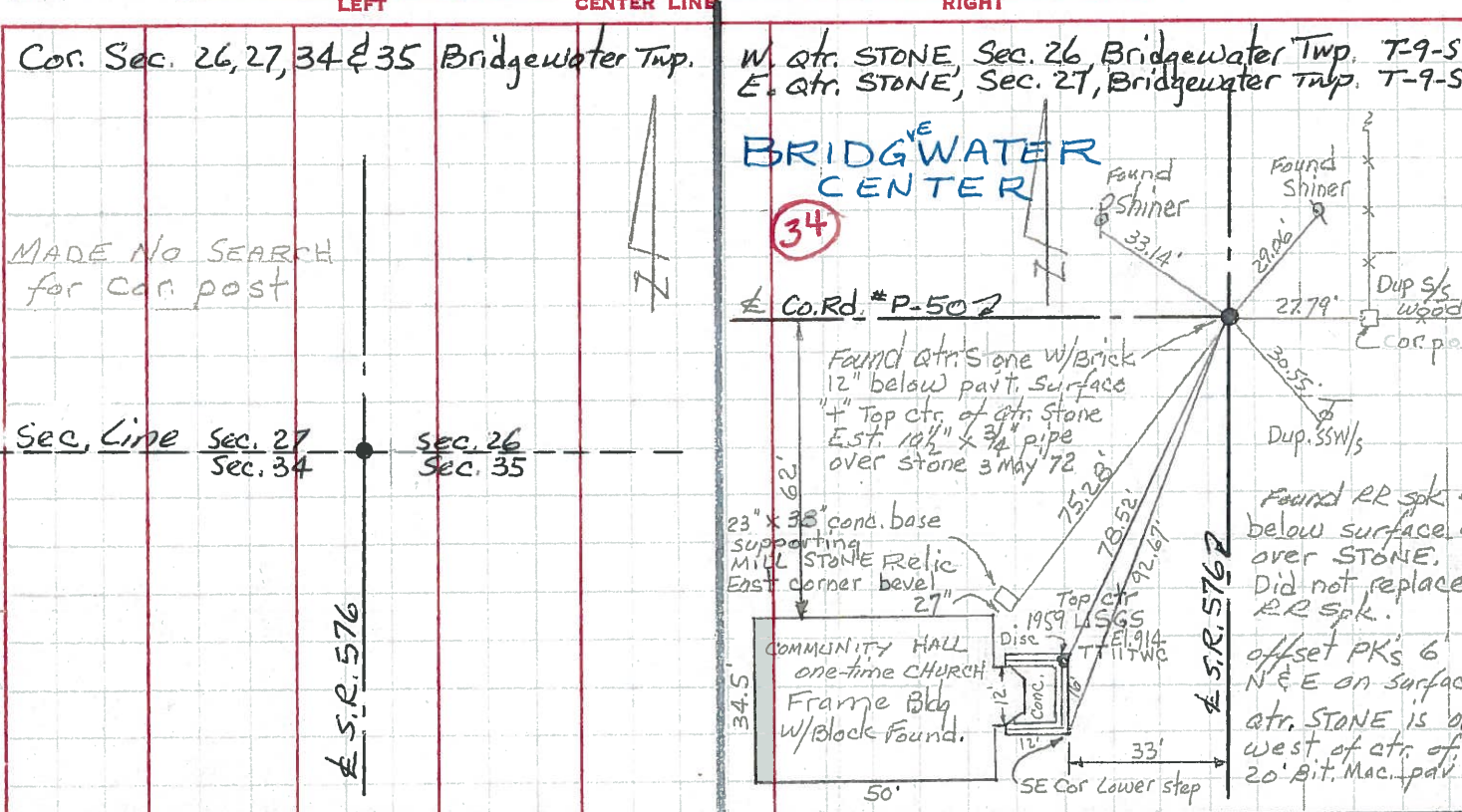
Red Beach  
Newcomb  
Knap

COUNTY Williams DATE May 1972

S. R. 576 WEATHER \_\_\_\_\_

SEC. Bridgewater Twp. TEMP. \_\_\_\_\_

DESCRIPTION CONTROL POINTS JOB NO.



PERSONNEL TITLE PERSONNEL TITLE

COUNTY Williams DATE 1-30-58

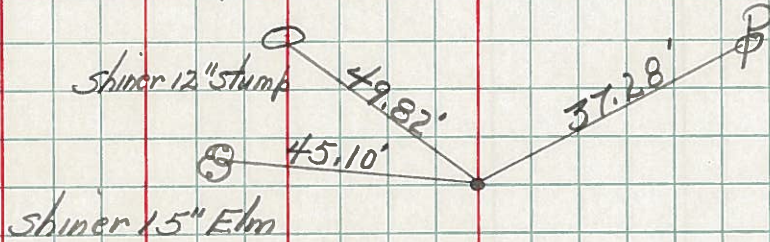
S. R. # 576 WEATHER

SEC. TEMP.

DESCRIPTION LEFT CENTER LINE RIGHT JOB NO.

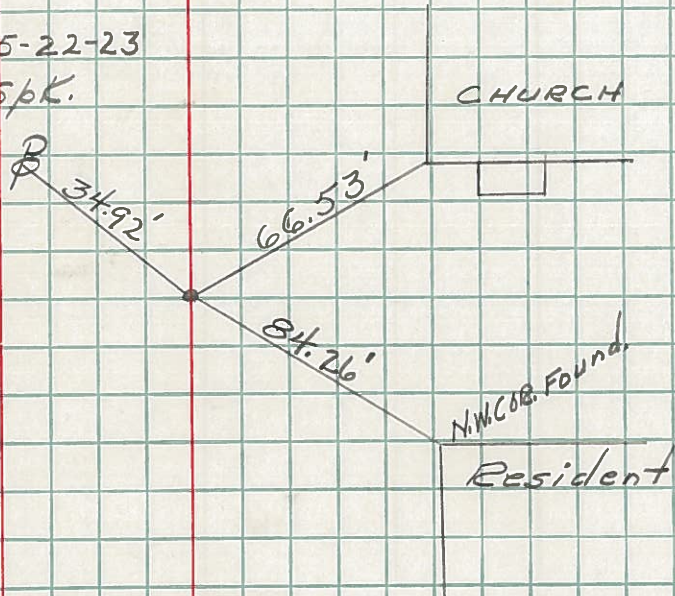
73.  
Sta. 53+01.75 1/4 COR. Sec. 22-23  
Found stone set 3/4" bolt

30



74.  
Sta. 79+60.99 Sec. -14-15-22-23  
Found stone set R.E. SpK.

31



75  
Sta. 106+03.54 1/4 Sec. 14-15  
Set 3/4" iron bolt.

38

