

O.D.O.T. DISTRICT 2 SURVEY OFFICE (USE ONLY)

PERSONNEL

REFERENCE NO. 40

SHEET 10 OF 10

NOTES HOFFMAN

DATE 12/16/82

ROUTE SR 576

H.C. HOUSEHOLDER

WEATHER PARTLY CLOUDY

COUNTY WILLIAMS

R.C. LOEHRKE

TEMP. 37°

TOWNSHIP WOODBRIDGE

BARNHISEL

SECTION 10

DWG BY NIESE PID \_\_\_\_\_

T 9 S R 3 W

TYPE MONUMENT 3/4" IPIPE

ON SURFACE - ~~BELOW~~ ON

OFFSET Q PAVEMENT \_\_\_\_\_ LT : RT

10.0' TO LT EDGE PAVEMENT

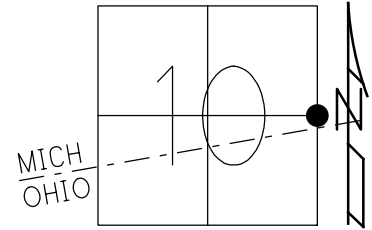
STATION: 1085+99.55

HORIZ.DATUM: \_\_\_\_\_

GEOID: \_\_\_\_\_

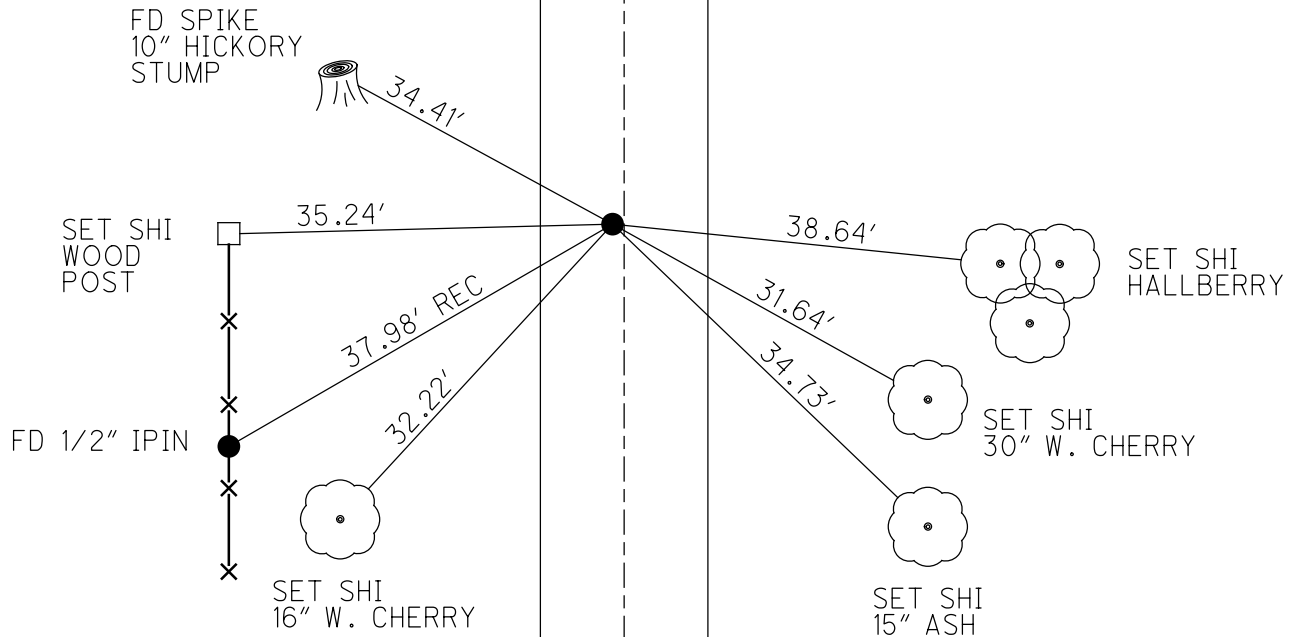
GRID: NORTHING: \_\_\_\_\_

EASTING: \_\_\_\_\_



RECORD: P.I.  
 STA 211+82.25  
 2+70.49 = 1085+99.55  
 $\Delta = 00^{\circ}26'00''$  RT  
 FD 3/4" I.D PIPE  
 12/16/82, HOFFMAN

Q SR 576



County HILLSDALE S.R. 576 EXTENDED

Date DECEMBER 16, 1982

Township WOODBRIIDGE - MICH

Weather PARTLY CLOUD

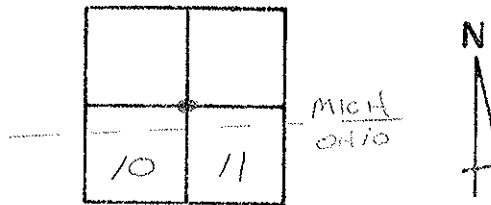
Section 10-11

Temp. 43.7°

T9<sup>S</sup>N, R3<sup>N</sup>E

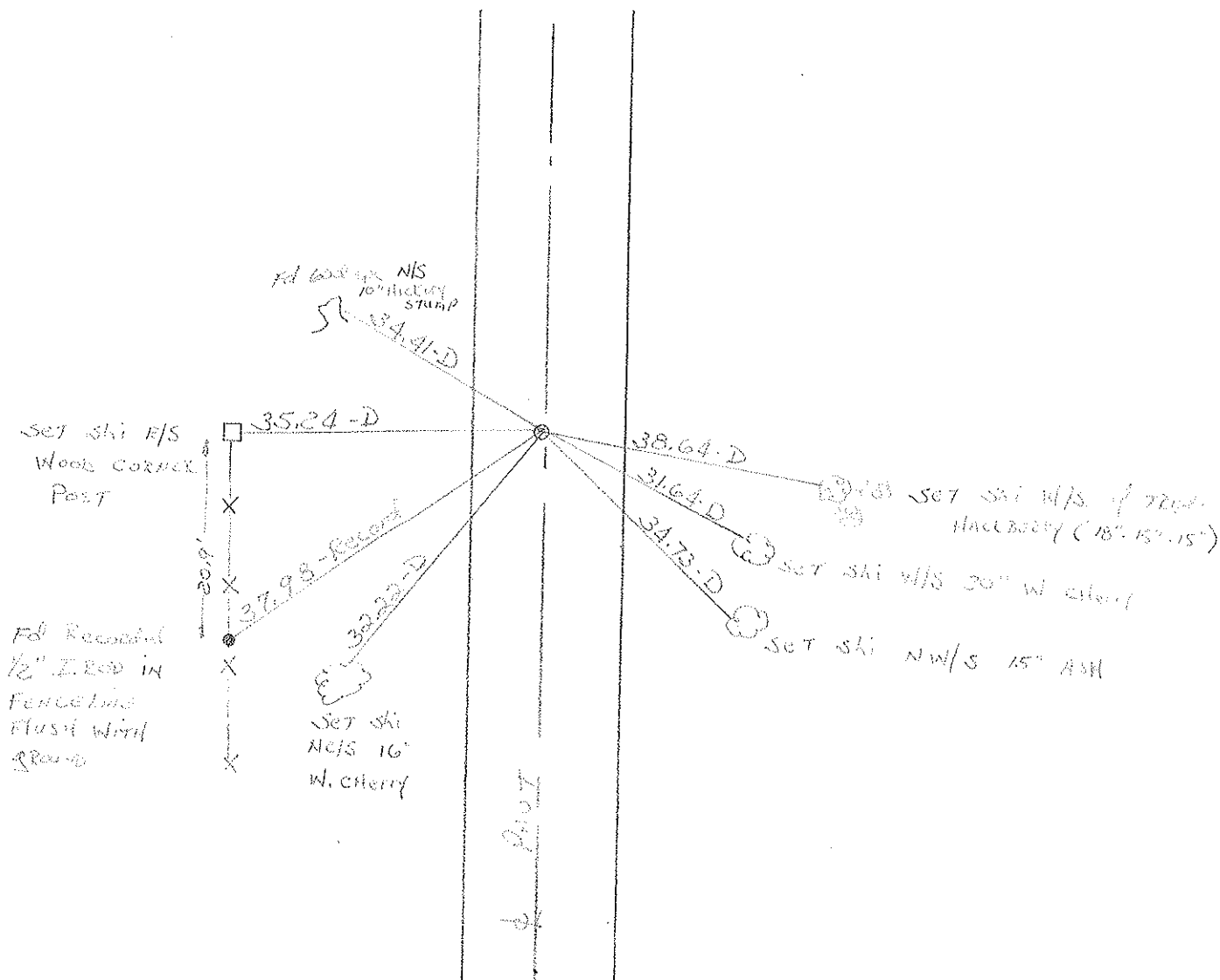
Personnel HOFFMAN  
HOUSEHOLDER  
LOZIERE  
BARADISEL

#40



Fd 1/4" I.D. PIPE @ surface  
 10.0' TO LT. F.P.  
 11.3' TO RT. F.P.

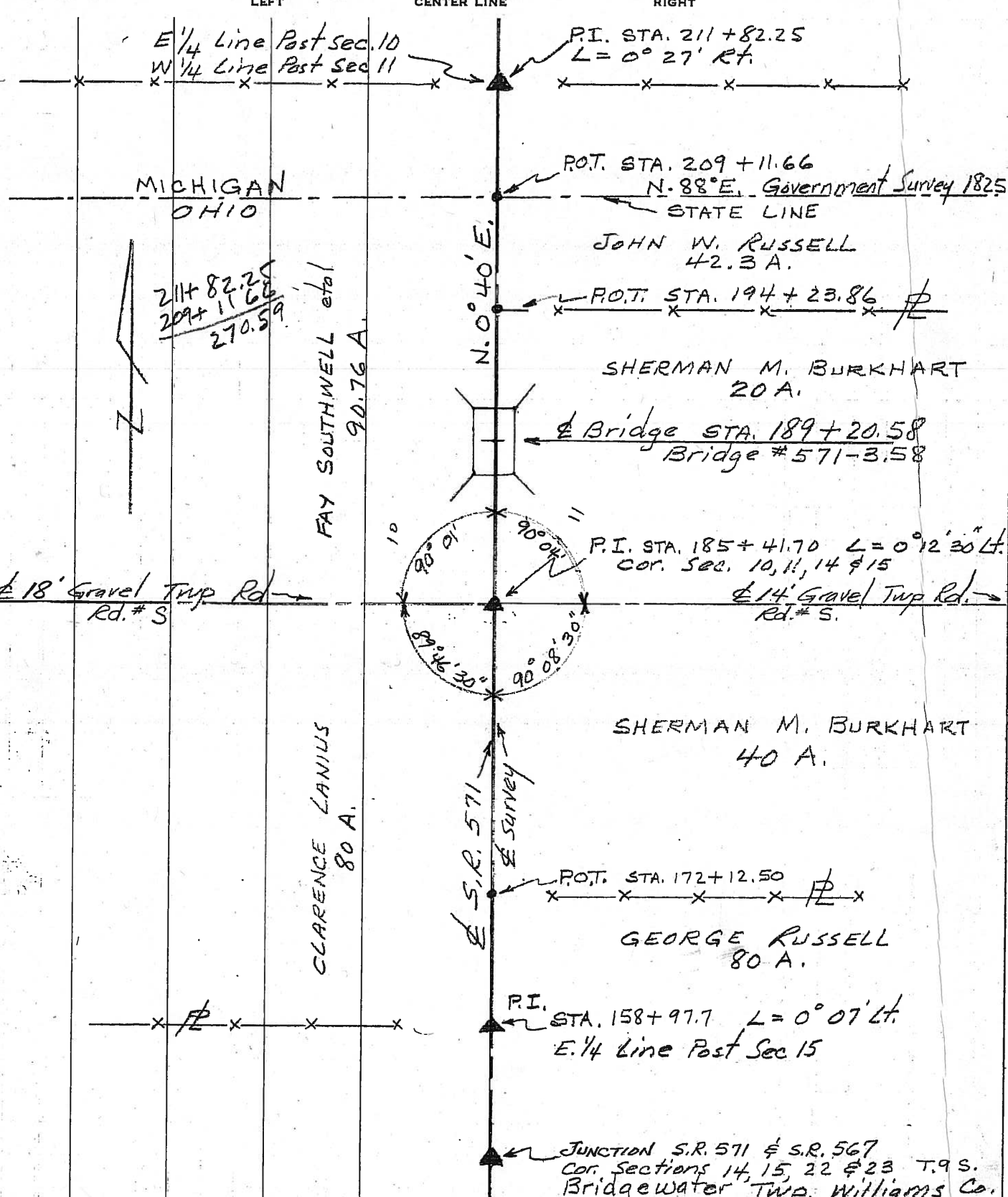
RECORD: P.I. STA 211482.25  
 § = 0°-27' RT



PERSONNEL	TITLE	PERSONNEL	TITLE
Beach			
Hoover			
Ruffer-Instr.			
Knape			
Heff			

COUNTY Williams DATE 4 April 1956  
 S. R. 571 WEATHER Overcast  
 SEC. Bridge # 571-3.58 TEMP. 39°

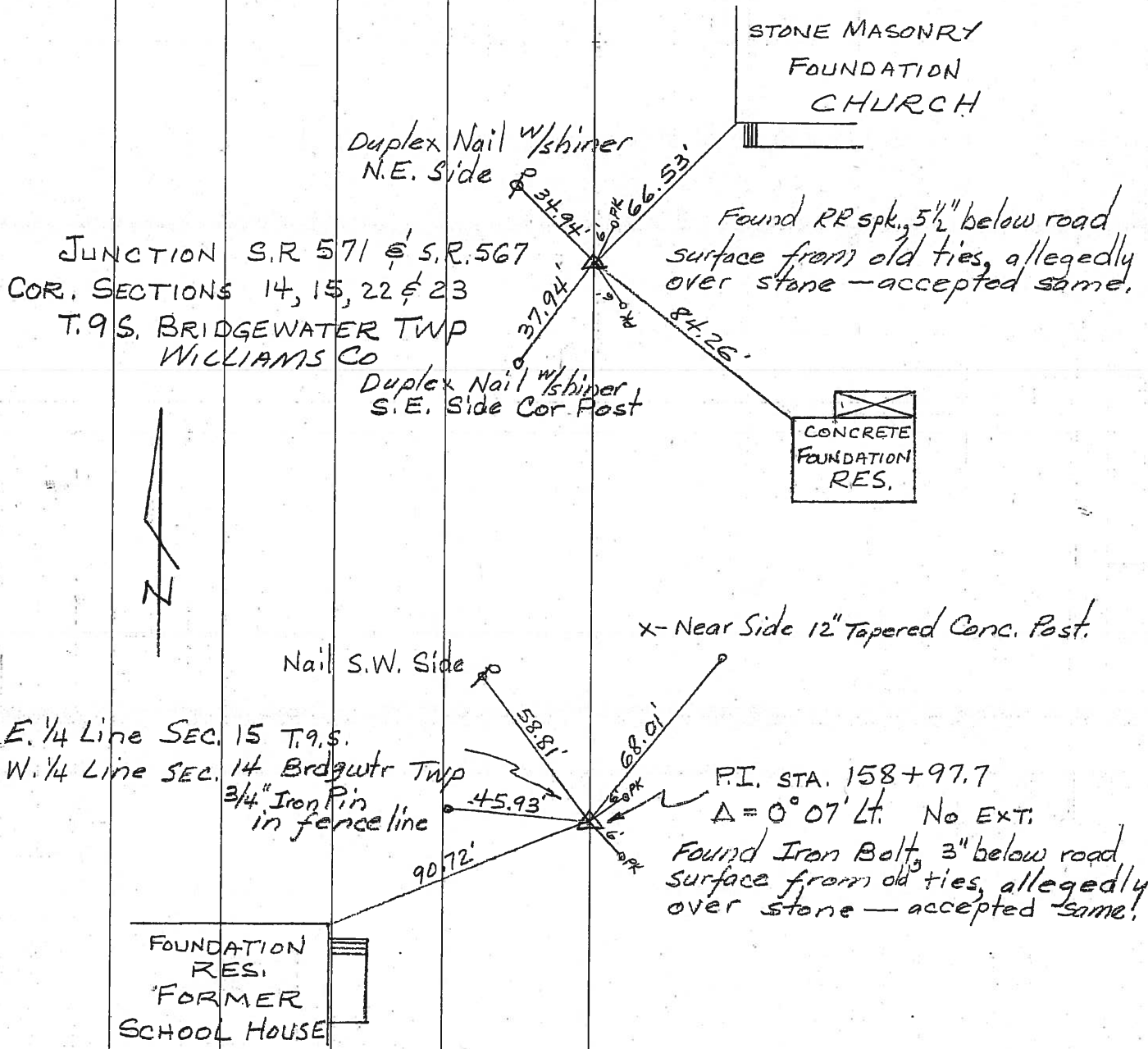
DESCRIPTION ALIGNMENT JOB NO. 02185



PERSONNEL	TITLE	PERSONNEL	TITLE
Beach			
Hoover			
Ruffer-Instr.			
Knape			

COUNTY Williams DATE 3 April 1956  
 S. R. 571 WEATHER Capricious  
 SEC. Bridge # 571-3.58 TEMP. 72°

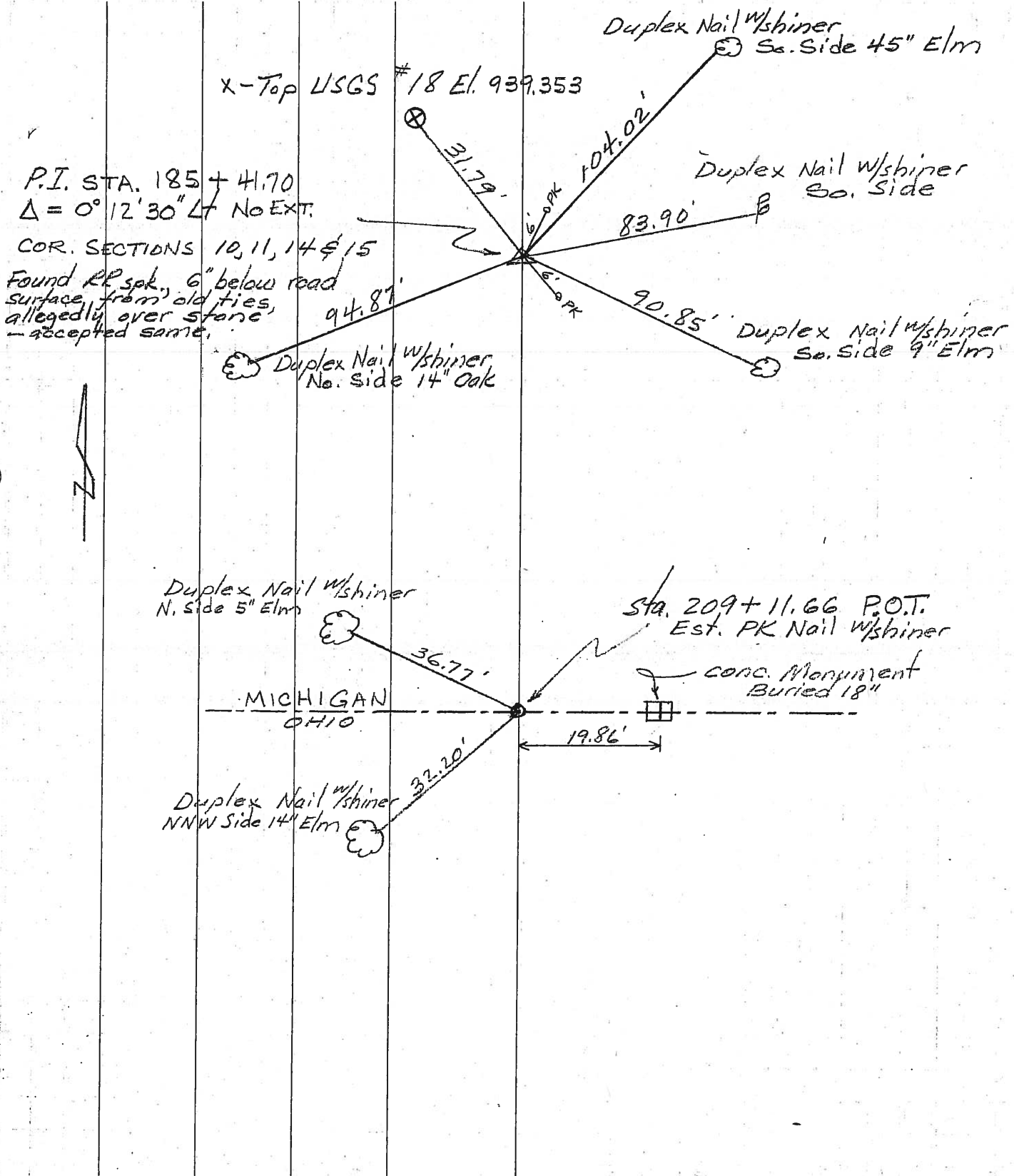
Hoff DESCRIPTION CONTROL POINTS LEFT CENTER LINE RIGHT JOB NO. 02185



PERSONNEL	TITLE	PERSONNEL	TITLE	COUNTY	DATE
Beach				Williams	3 April 1956
Hoover				S. R. 571	WEATHER Capricious
Ruffer-Instr.				SEC. Bridge # 571-3.58	TEMP. 72°
Knape					JOB NO. 02185
Hoff					

CONTROL POINTS

DESCRIPTION LEFT CENTER LINE RIGHT



PERSONNEL	TITLE	PERSONNEL	TITLE	COUNTY	DATE	WEATHER	TEMP.
Beach				Williams	3 April 1956	Capricious	
Hoover				S. R. 571			
Ruffer-Instr.				SEC. Bridge # 571-3.58			72°
Knape							
Hoff DESCRIPTION	CONTROL POINTS				JOB NO.	02185	
	LEFT	CENTER LINE	RIGHT				

