

#7002

FOR ANY QUESTIONS PLEASE CONTACT ODOT DISTRICT 2 REAL ESTATE AT 419-353-1813

N.R.H. 439-C

FED. AID DIST. NO.	STATE	FED. AID PROJ. NO.	FISCAL YEAR
10	OHIO	N.R.H. 439-C	1933

S.H. NO. 304 SEC. A-1 BR. & Relocation
WILLIAMS COUNTY

STATE OF OHIO
DEPARTMENT OF HIGHWAYS
BRYAN — FORT WAYNE ROAD
WILLIAMS COUNTY
S.H. No. 304 SEC. A-1 BRIDGE & RELOCATION
BUREAU OF CONSTRUCTION

NET LENGTH OF PROJECT 5505.1 LIN. FT.
CENTER AND PULASKI TOWNSHIPS
BRIDGE NO. WI-108-31.

The Standard Specifications of the State of OHIO Department of Highways together with the "Supplemental Specifications for National Recovery Highway Funds Projects" in force on date of contract will govern this Improvement.

I hereby approve these plans and declare that the making of this improvement will not require the closing to traffic of the highway and that a temporary road will be provided as indicated on the plans.
That the necessary right of way has been provided.

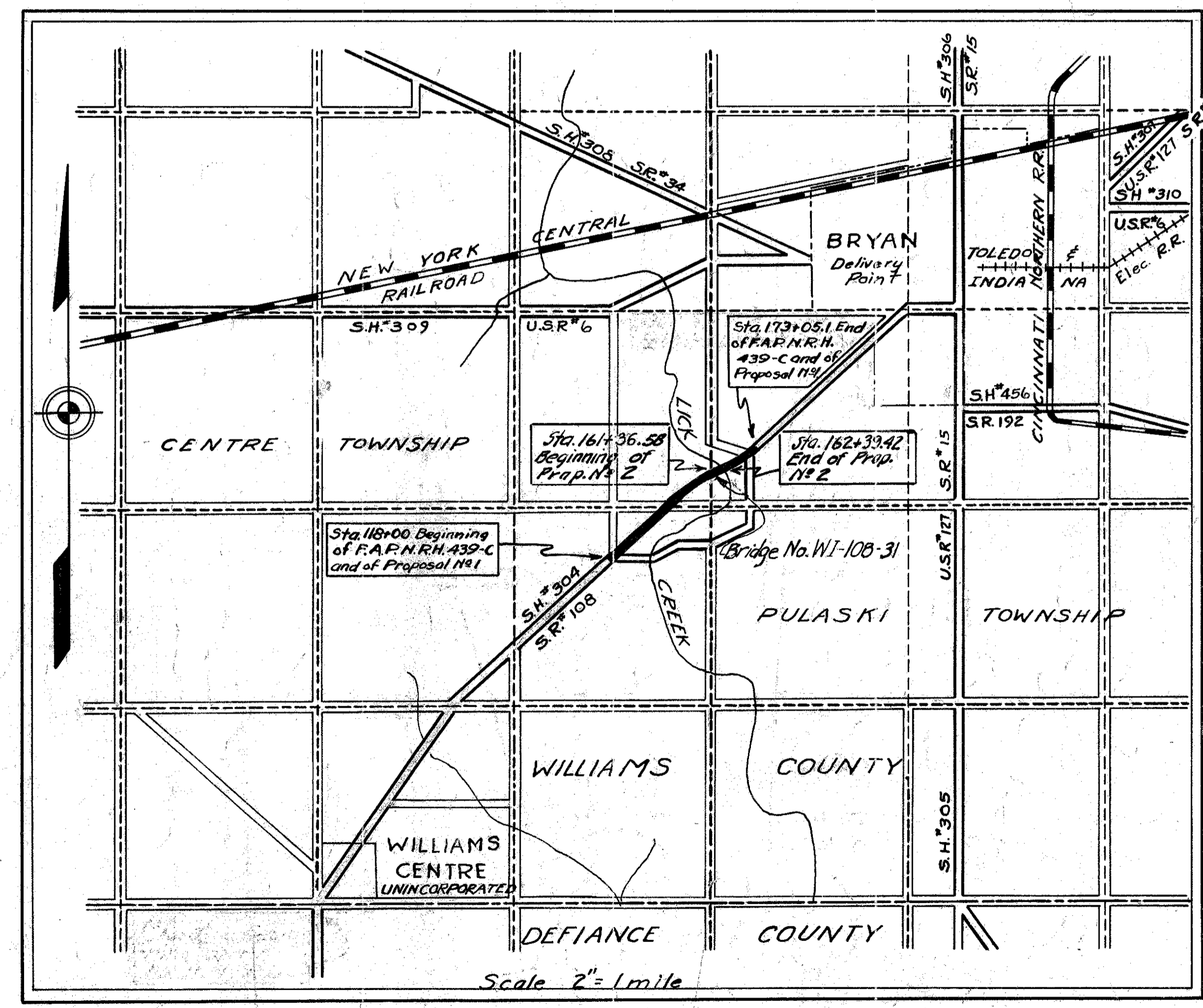
- Approved: But Bauer
Date: 6-28-33 Resident District Deputy Director
- Approved: R. Wisda
Date: 6-29-33 Resident Division Deputy Director
- Approved: Elmer Felty
Date: 9-12-33 Chief Engr. Bureau of Construction
- Approved: _____
Date: _____ Chief Engr. Bureau of Maintenance
- Approved: J. Burkey
Date: 8-18-33 Chief Engr. Bureau of Bridges
- Approved: J. Chapman
Date: 9-12-33 First Asst. Director and Chief Engr.
- Approved: W. Meel
Date: 9-12-33 Director of Highways

CONVENTIONAL SIGNS

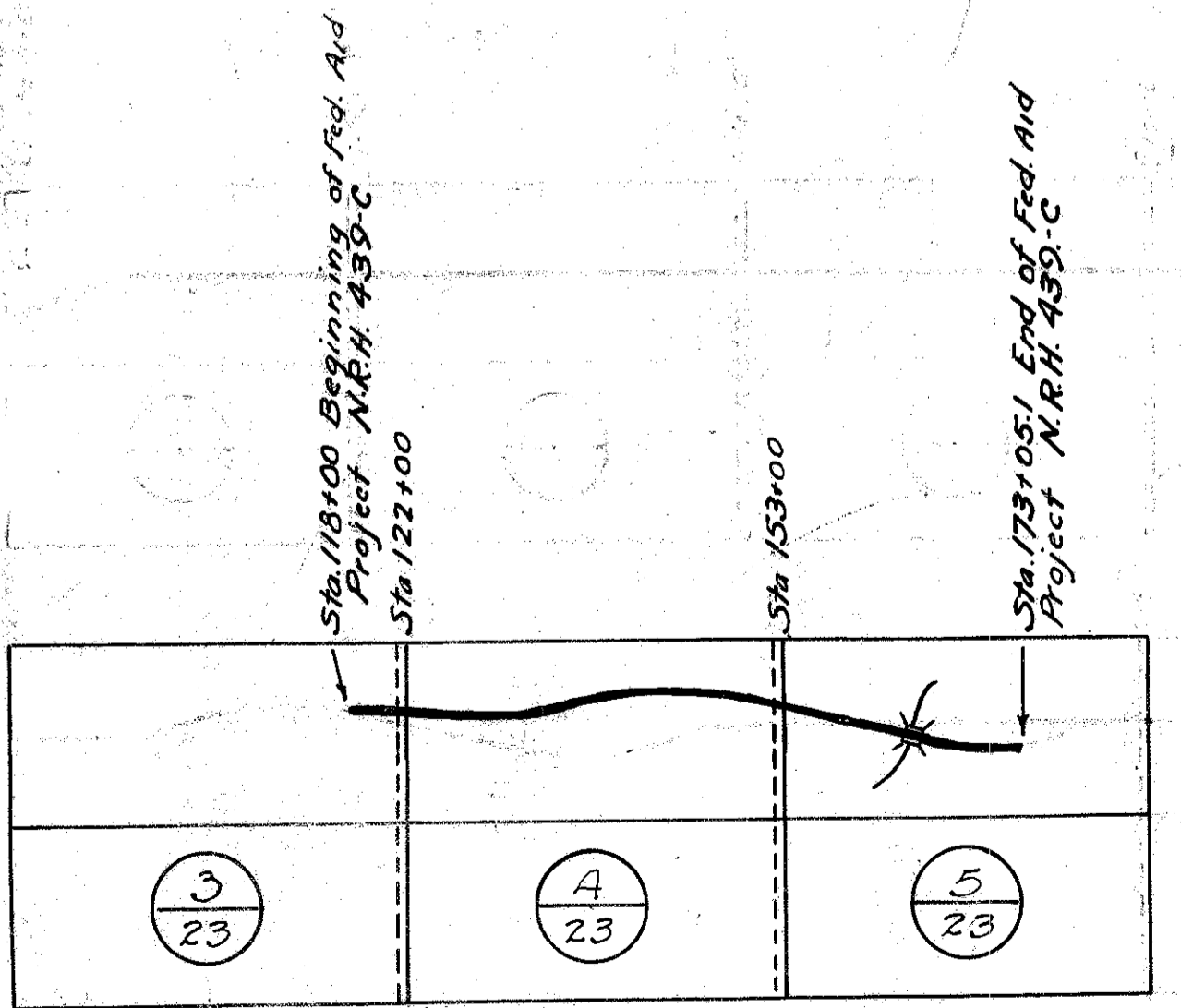
STATE LINE	-----
COUNTY LINE	-----
TOWNSHIP LINE	-----
SECTION LINE	-----
CENTER LINE	-----
PROPERTY LINE	-----
CITY OR VILLAGE LINE	-----
FENCE LINE	-----
POLE LINE	-----
STEAM RAILROAD	-----
ELECTRIC RAILROAD	-----
GUARD RAIL	-----
DRAIN PIPE NEW	-----
DRAIN PIPE OLD	-----

INDEX OF SHEETS

TITLE PAGE	1
TYPICAL SECTION	2
PLAN & PROFILE	3, 4 & 5
CURVE TABLES	16
CROSS SECTIONS	6 to 18
STRUCTURE DETAILS	18 to 23
SUMMARY OF QUANTITIES	23
INTERSECTION DETAILS & NOTES	



APPROVED
[Signature] 8-2-33
Planning Engineer Date
Remarks: New 20' long
road, grade & S.T.S.



PORTION TO BE IMPROVED
STANDARD DRAWINGS OF DETOURS SHOWN THUS
STATE HIGHWAYS
IMPROVED COUNTY ROADS
SCALES
PLAN 1" = 100'
PROFILE VERTICAL 1" = 10'
PROFILE HORIZONTAL 1" = 100'
CROSS-SECTIONS 1" = 5'

SUPPLEMENTAL PRINTS OF
Dwgs. No. A5-33
S 27 P.C. 1 & 2
I-8 C.B. 1-2 & 2-2

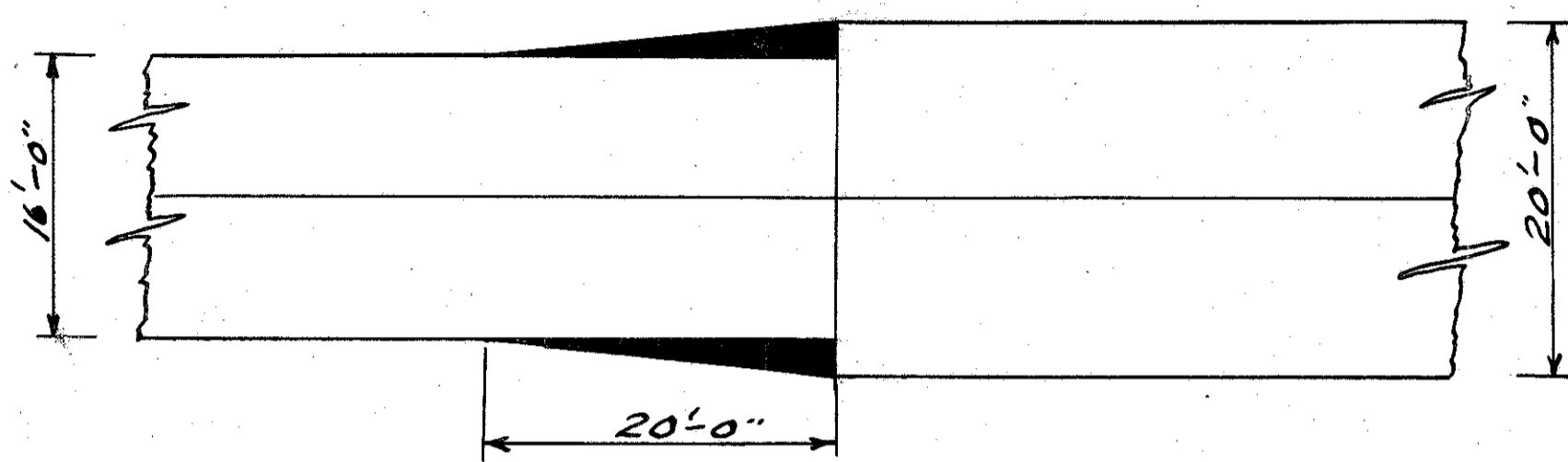
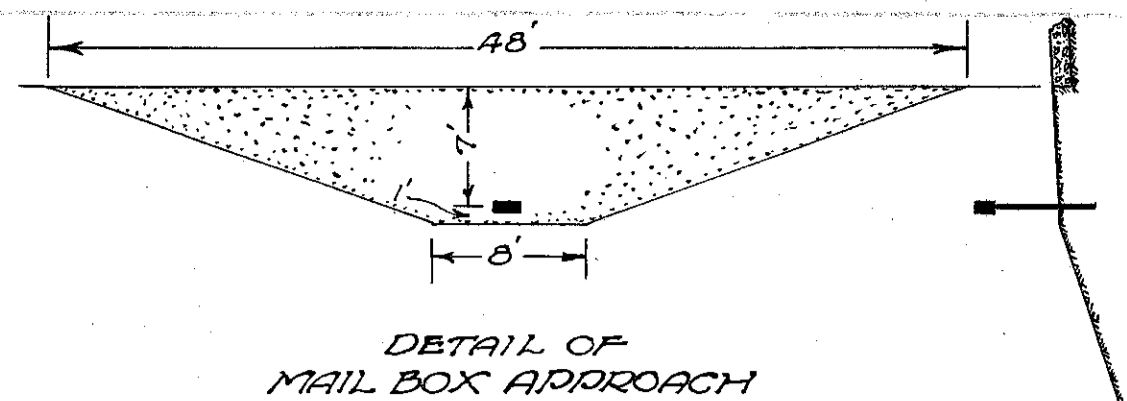
CHECKING RECORD

OFFICE	BY	DATE
RESIDENT	[Signature]	6-28-33
DIVISION	[Signature]	6-28-33
CENTRAL-CONST.	P.G.F.	9-6-33
CENTRAL-BRIDGES		
BUREAU PUBLIC ROADS	[Signature]	2-4-39

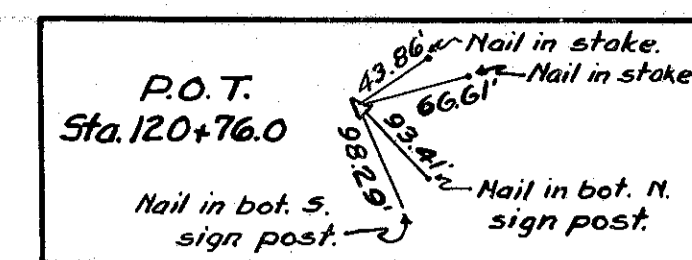
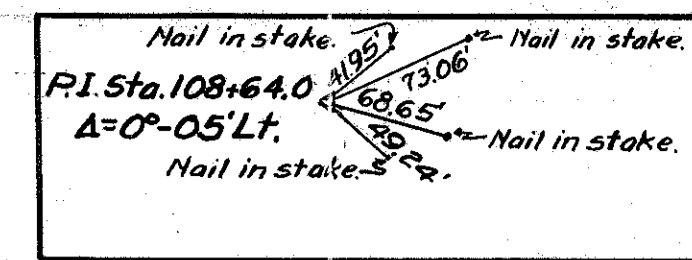
Recommended for Approval: _____
Date: _____ District Engr. Bureau of Public Roads

Recommended for Approval: _____
Date: _____ Chief Engr. Bureau of Public Roads

Approved: _____
Date: _____ Chief of Bureau

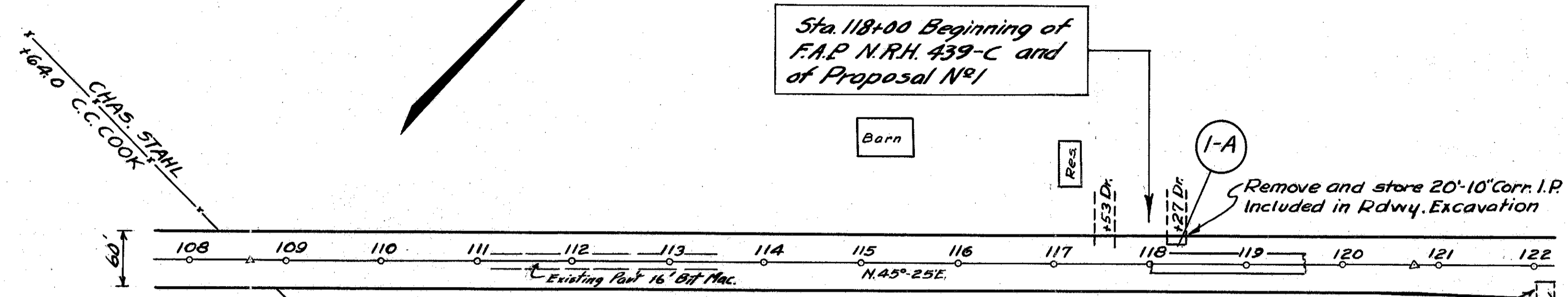


Typical Detail sketch of Pavement transition
Sta. 117+80 to Sta. 118+00 and Sta. 113+05.1 to Sta. 113+26.1
Area = 8.88 Sq. Yds.
Type Bituminous Concrete.
Note: - Bituminous widening as indicated in above sketch is to be constructed by the State M.R. forces of Williams County.



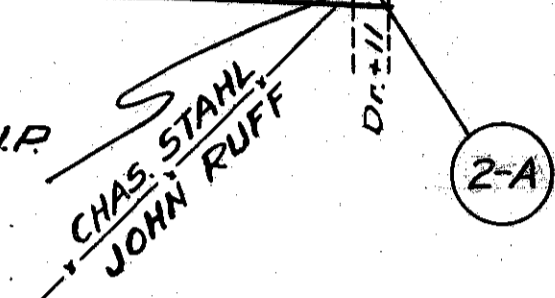
FED. AID DIST. NO.	STATE	FED. AID PROJ. NO.	FISCAL YEAR
10	OHIO	HRH-439-C	1933

S.H. NO. 304 SEC. A-1 BR&E RELOCATION WILLIAMS COUNTY

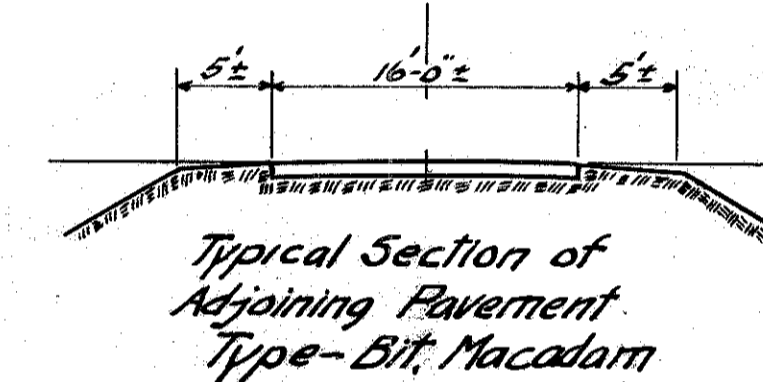


Maintain one way traffic around the beginning of the Project. This includes widening, raising and surfacing the shoulder to serve as a run-around and the furnishing and maintaining of the necessary barricades, lights, signs, flagmen, watchmen, etc. necessary for the convenience and safety of traffic and the removal of the run-around upon completion of the Project.

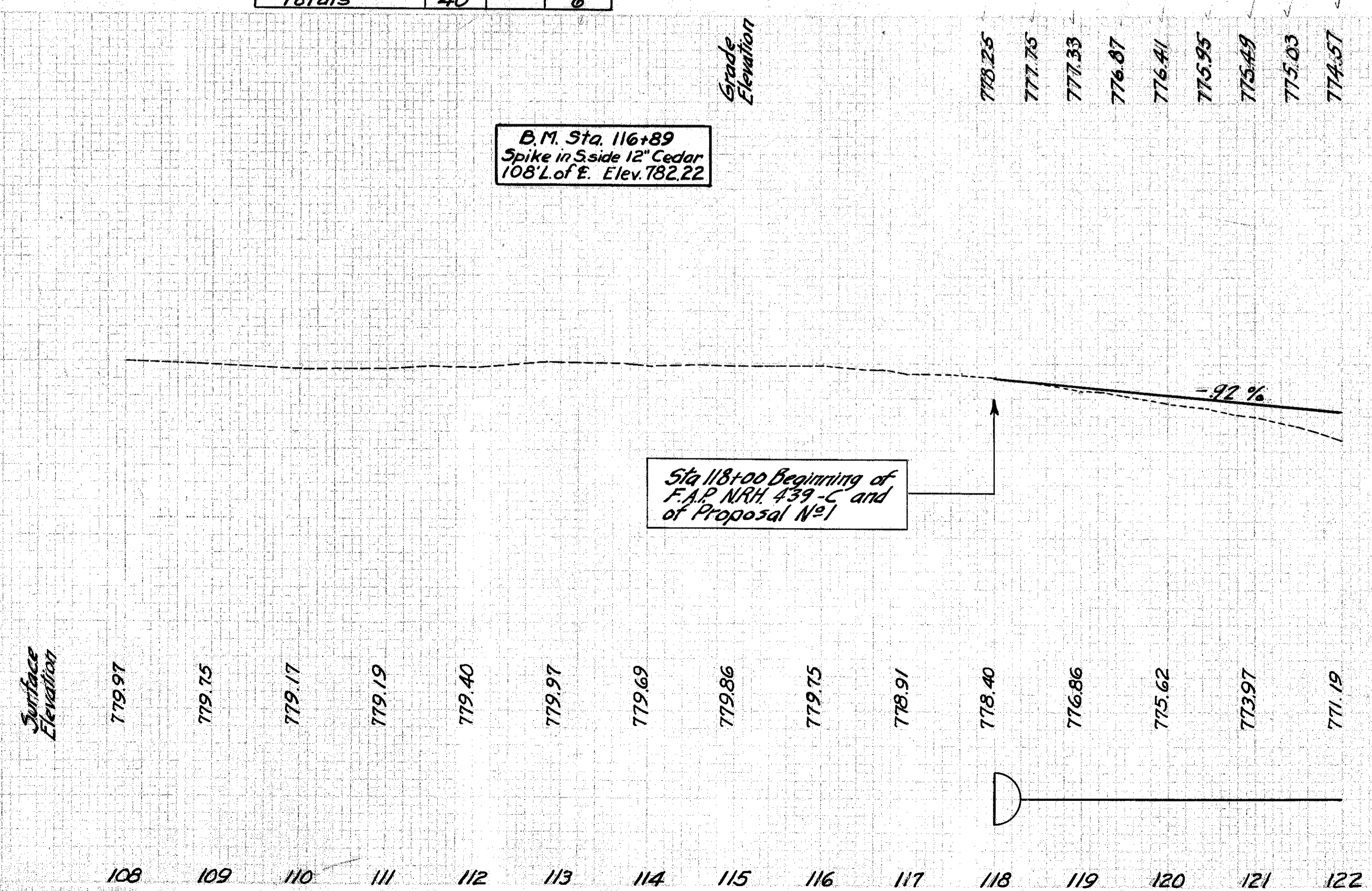
Remove and store 18'-10" Cor. I.P. Included in Rdwy. Excav.



Item No.	Station	Rt. or Lt.	Place	
			Corr. I.P. Lin. Ft.	Aggregate Cu. Yds.
1-A	118+27	Lt.	20'	3
2-A	122+11	Rt.	20'	3
Totals			40'	6

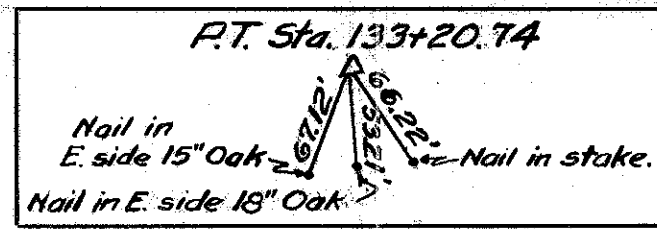


GENERAL NOTES
All materials removed during progress of work, which are not to be used on the Project, shall be piled neatly on the Right-of-Way for disposal by the Department of Highways.
Removal of all hedges, stumps or trees under 8" diameter and pipe, etc., which is to be stored for removal by the State, is included for payment in the roadway or structure excavation. No trees shall be removed other than those specifically marked, "to be removed" except by written order of the Engineer.
The price bid per lin. ft. for Roadway Drainage, Item I-3, (all sizes of pipe) shall include the connection of all parallel or lateral drains encountered during the progress of the work. All necessary pipe and iron tees to complete the connections shall be furnished by the Contractor.
The joints of all pipe underdrains adjacent to trees, catch basins or other drainage structures (number of joints as directed by Engineer) and all special connections shall be thoroughly cemented. This work to be considered a part of item I-3 and payment for same, as outlined above, is included in the price bid per lin. ft. for the different sizes of pipe underdrain.

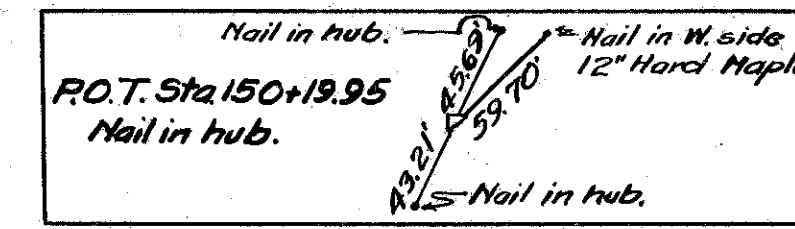
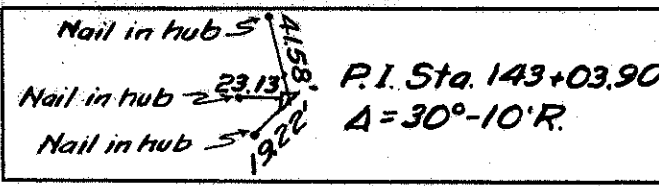


Existing Guard Rail Removal			
Station	Rt. or Lt.	Lin. Ft.	
From To			
122+90 124+20	Lt	130	
Total			130

Note-Timber Guard Rail is to be removed by State M&R forces before work starts on Project.

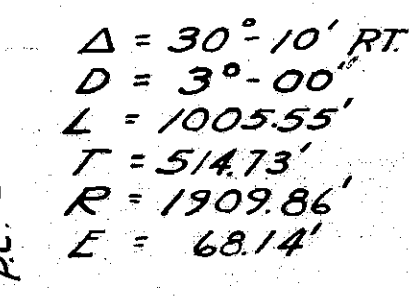
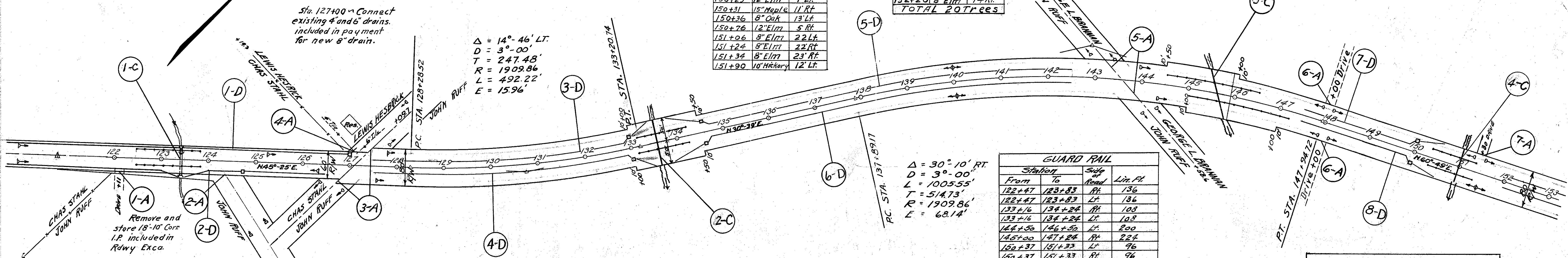


Station	Kind	Location
126+95	15' Maple	26' Lt.
133+90	12' Locust	12' Lt.
134+40	18' Locust	15' Rt.
143+03	8' Hackberry	18' Lt.
143+16	10' Elm	10' Lt.
143+40	10' W. Cherry	16' Rt.
143+50	18' W. Cherry	26' Rt.
144+84	18' Walnut	27' Lt.
150+23	12' Elm	1' Lt.
150+31	15' Maple	11' Rt.
150+36	8' Oak	13' Lt.
150+76	12' Elm	5' Rt.
151+06	8' Elm	22' Lt.
151+24	8' Elm	22' Rt.
151+34	8' Elm	23' Rt.
151+90	10' Hackberry	12' Lt.



FED. AID DIST. No.	STATE	FED. AID PROJ. No.	FISCAL YEAR
10	OHIO	NRH. 439-C	1933

S.H. NO. 304 SEC. A-1 BR. & RELOCATION WILLIAMS COUNTY

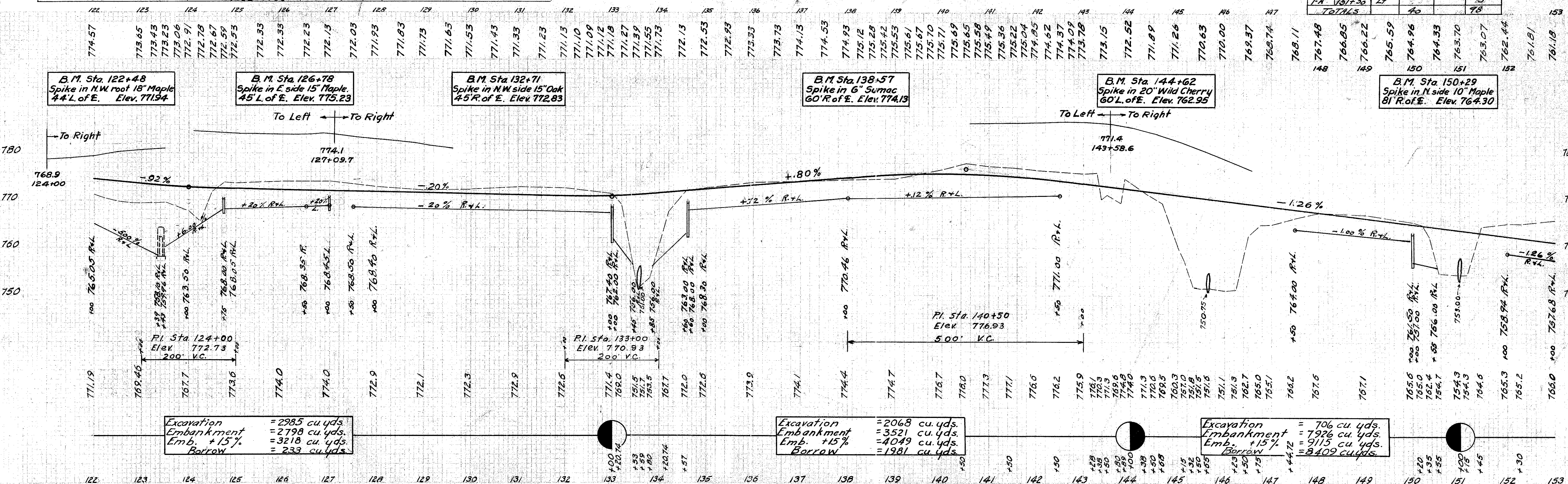


Station	Kind	Location
151+93	18' Elm	16' Lt.
151+98	10' Elm	1' Lt.
152+07	8' Elm	1' Rt.
152+20	8' Elm	14' Rt.
TOTAL 20 Trees		

Item No.	Station		Rt. or Lt.	Pipe - Lin. Ft.	Backfill Aggregate Cu. Yds.	S&W Catch Basin	Cov. I.P. Lin. Ft.	Remarks
	From	To						
1-D	123+43	127+00	Lt.	345	39	1	10	C.B. at Sta. 127+00. Corr. I.P. at outlet
2-D	123+43	126+50	Rt.	295	34	1	10	C.B. at Sta. 124+15. Corr. I.P. at outlet
3-D	127+50	133+45	Lt.	583	66	1	10	C.B. at Sta. 133+00. Corr. I.P. at outlet
4-D	127+50	142+45	Rt.	853	96	1	10	C.B. at Sta. 134+60. Corr. I.P. at outlet
5-D	133+85	142+50	Lt.	853	96	1	10	C.B. at Sta. 134+60. Corr. I.P. at outlet
6-D	133+85	142+50	Rt.	853	96	1	10	C.B. at Sta. 134+60. Corr. I.P. at outlet
7-D	147+50	150+50	Lt.	283	33	1	10	C.B. at Sta. 150+00. Corr. I.P. at outlet
8-D	147+50	150+50	Rt.	283	33	1	10	C.B. at Sta. 150+00. Corr. I.P. at outlet
Totals				4088	463	8	80	

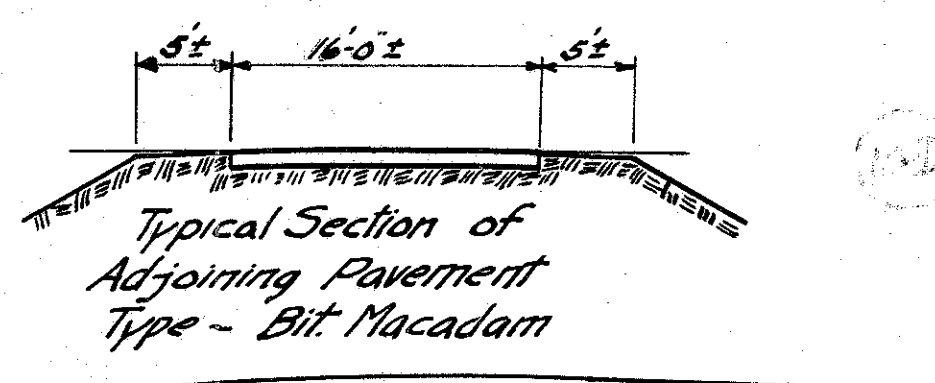
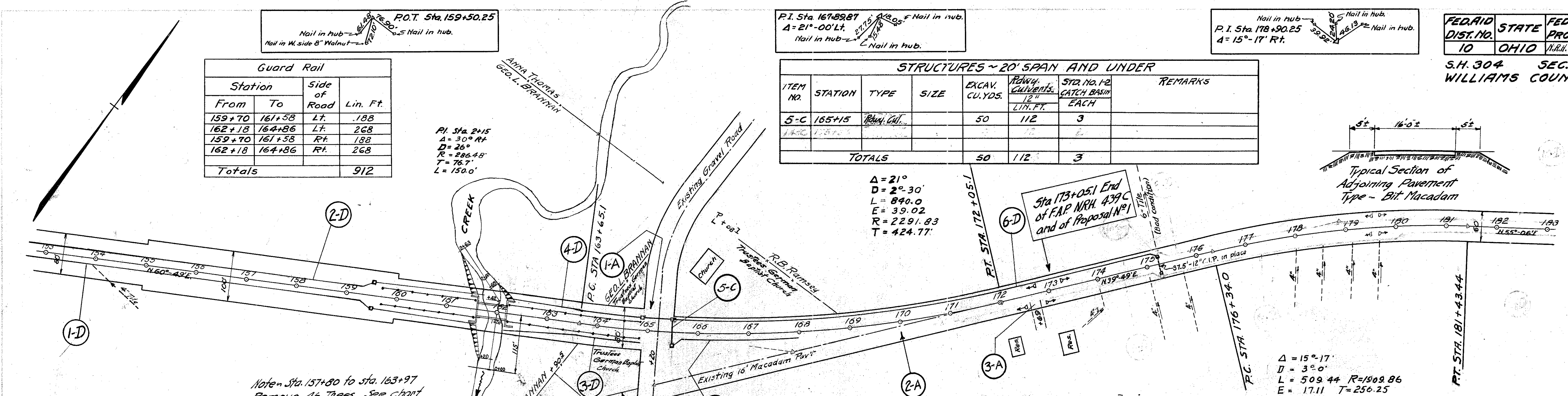
Item No.	Station	Type	Size	Excavation		Concrete		Reinf. Steel Lbs.	R.C.P. (b)		Dowel Holes Each	Remarks
				Channel Cu. Yds.	Structure Cu. Yds.	1-5% Mix Cu. Yds.	6-4% Mix Cu. Yds.		48" Lin. Ft.	60" Lin. Ft.		
1-C	123+41	SHOULDER CUT EXTENSION	4'x4'x19'	6	18	12.46	5.13	839	108	176	18	
2-C	133+59	PIPE	60"x100"		10							
3-C	145+65	PIPE	48"x108"		12							
4-C	151+00	PIPE	60"x76"		10							
Totals				6	50	12.46	5.13	839	108	176	18	

Item No.	Station	Rt. or Lt.	Place		Remarks
			Corr. I.P. - Lin. Ft.	Aggregate Cu. Yds.	
1-A	122+11	Rt.	20		3
2-A	124+20	Rt.	12		20
3-A	127+09	Rt. Lt.	20		30
4-A	127+30	Lt.	20		30
5-A	143+58	Rt. Lt.	20		30
6-A	148+00	Rt. Lt.	20		6
Various Mail Box Approaches					3
7-A	151+30	Lt.	40		3
Totals				40	78



Station	Side of Road	Lin. Ft.
From To		
159+70 161+58	Lt.	188
162+18 164+86	Lt.	268
159+70 161+58	Rt.	188
162+18 164+86	Rt.	268
Totals		912

ITEM NO.	STATION	TYPE	SIZE	EXCAV. CU. YDS.	ROWWAY CULVERTS 12" LIN. FT.	STRA. NO. 12" CATCH BASIN EACH	REMARKS
5-C	165+15	Box Cul.		50	112	3	
TOTALS				50	112	3	



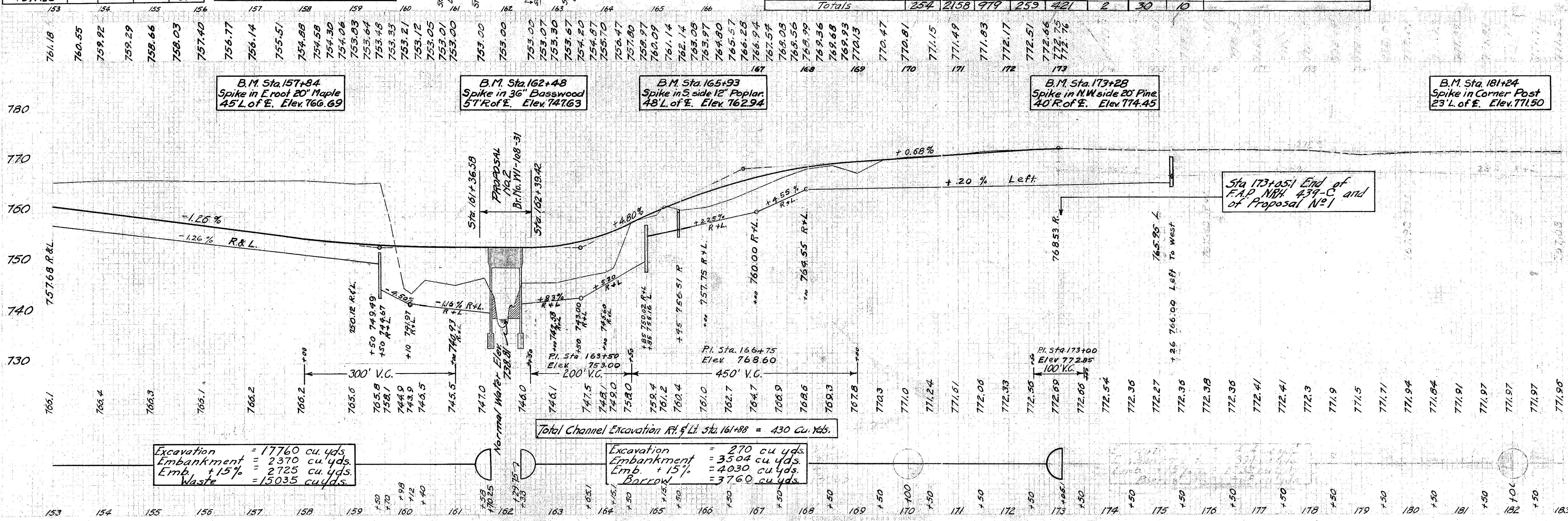
Station	Kind	Location
157+85	8" Elm	11' Rt.
157+87	10" Elm	14' Rt.
157+98	10" Elm	19' Rt.
158+20	18" Elm	31' Lt.
158+41	18" Elm	14' Lt.
158+43	10" Elm	15' Lt.
159+50	18" Elm	22' Lt.
159+73	8" Elm	20' Rt.
159+73	10" Maple	10' Rt.
159+83	8" Maple	30' Rt.
160+05	12" Elm	24' Lt.
162+12	10" Willow	51' Lt.
162+12	12" Elm	53' Lt.
162+14	8" Locust	81' Lt.
162+33	20" Locust	120' Lt.
161+64	24" Sycam	62' Rt.
161+29	12" Locust	32' Rt.
160+75	15" Locust	on E
160+40	12" Elm	28' Rt.
160+40	30" Sycam	18' Rt.
160+50	18" Locust	32' Rt.
160+60	12" Locust	22' Lt.
160+82	12" Locust	10' Lt.
160+28	12" Locust	23' Lt.
162+08	35" Sycam	112' Rt.
162+16	10" Locust	73' Rt.
162+18	12" Elm	30' Rt.
162+90	18" Locust	on E
163+30	24" Locust	2' Rt.
163+53	12" Locust	18' Rt.
163+97	24" Locust	30' Lt.
162+85	10" Locust	28' Lt.
163+00	8" Locust	10' Lt.
162+28	10" Locust	10' Lt.
162+44	18" Locust	15' Lt.
162+39	12" Locust	5' Lt.
162+49	10" Willow	240' Lt.
162+89	15" Locust	260' Lt.
163+00	15" Willow	236' Lt.
163+05	15" Locust	272' Lt.
163+24	15" Locust	245' Lt.
163+24	15" Locust	240' Lt.
162+16	10" Locust	299' Lt.
157+80	10" Maple	42' Lt.
160+06	8" Ash	28' Rt.
159+88	10" Maple	6' Lt.
TOTAL	46	Trees

Item No.	Station	Rt. or Lt.	Place	Corrd. R - Lin. Ft.	Aggregate Cu. Yds.
1-A	165+20	Rt. Lt.			20
2-A	170+00	Rt.			5
3-A	172+59	Rt.			3
4-A	Various	L Mail Box Approach			3
TOTALS					31

Data on Proposed Structure
Type: Steel I-Beams Conc. Deck
Span: 57' 6"
Roadway: 24' Skew - None
Wear Surface: A Concrete
App. Slabs - 21" x 13"

Item No.	Station	Rt. or Lt.	Pipe - Lin. Ft.				Backfill Aggregate Cu. Yds.	S&W#2 Catch Basins	Corr. I.P. - Lin. Ft.		Remarks
			6"	8"	10"	12"			8"	12"	
1-D	152+00	Rt.		949			108	1	10		C.B. at Sta. 159+50; Corr. I.P. at outlet
2-D	152+00	Lt.		949			108	1	10		C.B. at Sta. 159+50; Corr. I.P. at outlet
3-D	162+15	Rt.		260			29		10		Corr. I.P. at outlet.
4-D	162+15	Lt.				259	29		10		Corr. I.P. at outlet.
5-D	165+46	Rt.	254				28				
6-D	165+46	Lt.		979			119				Make connection to existing Catch Basin on Lt. at Sta. 175+25
Totals			254	2158	979	259	421	2	30	10	

Maintain one way traffic around the end of the Project. This includes widening, raising and surfacing the shoulder to serve as a run-around and the furnishing and maintaining of the necessary barricades, lights, signs, flagmen, watchmen, etc., necessary for the convenience and safety of traffic and the removal of the run-around upon completion of the Project.



Excavation = 17760 cu. yds.
Embankment = 2370 cu. yds.
Emb. + 15% = 2725 cu. yds.
Waste = 15035 cu. yds.

Excavation = 270 cu. yds.
Embankment = 3504 cu. yds.
Emb. + 15% = 4030 cu. yds.
Borrow = 3760 cu. yds.