

O.D.O.T. DISTRICT 2 SURVEY OFFICE (USE ONLY)

PERSONNEL

REFERENCE NO. 1

SHEET 1 OF 24

NOTES RHOADES

DATE 7/21/23

ROUTE US 6

H.C. AUBLE

WEATHER CLOUDY

COUNTY WOOD

R.C. RHOADES

TEMP. 71°

TOWNSHIP GRAND RAPIDS

SECTION 30

DWG BY RHOADES

PID 115398

T 5 N R 9 E

TYPE MONUMENT MAG/WASHER

ON SURFACE - ~~BELOW~~ ON

OFFSET Q PAVEMENT 2.0' LT : RT

9.6' TO RT EDGE PAVEMENT

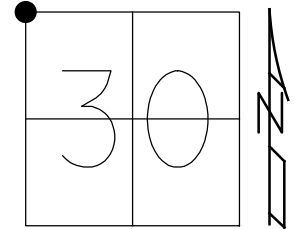
STATION: 0+00

HORZ.DATUM: NAD83 (2011)

GEOID: NAVD88 2018

GRID: NORTHING: 624190.026

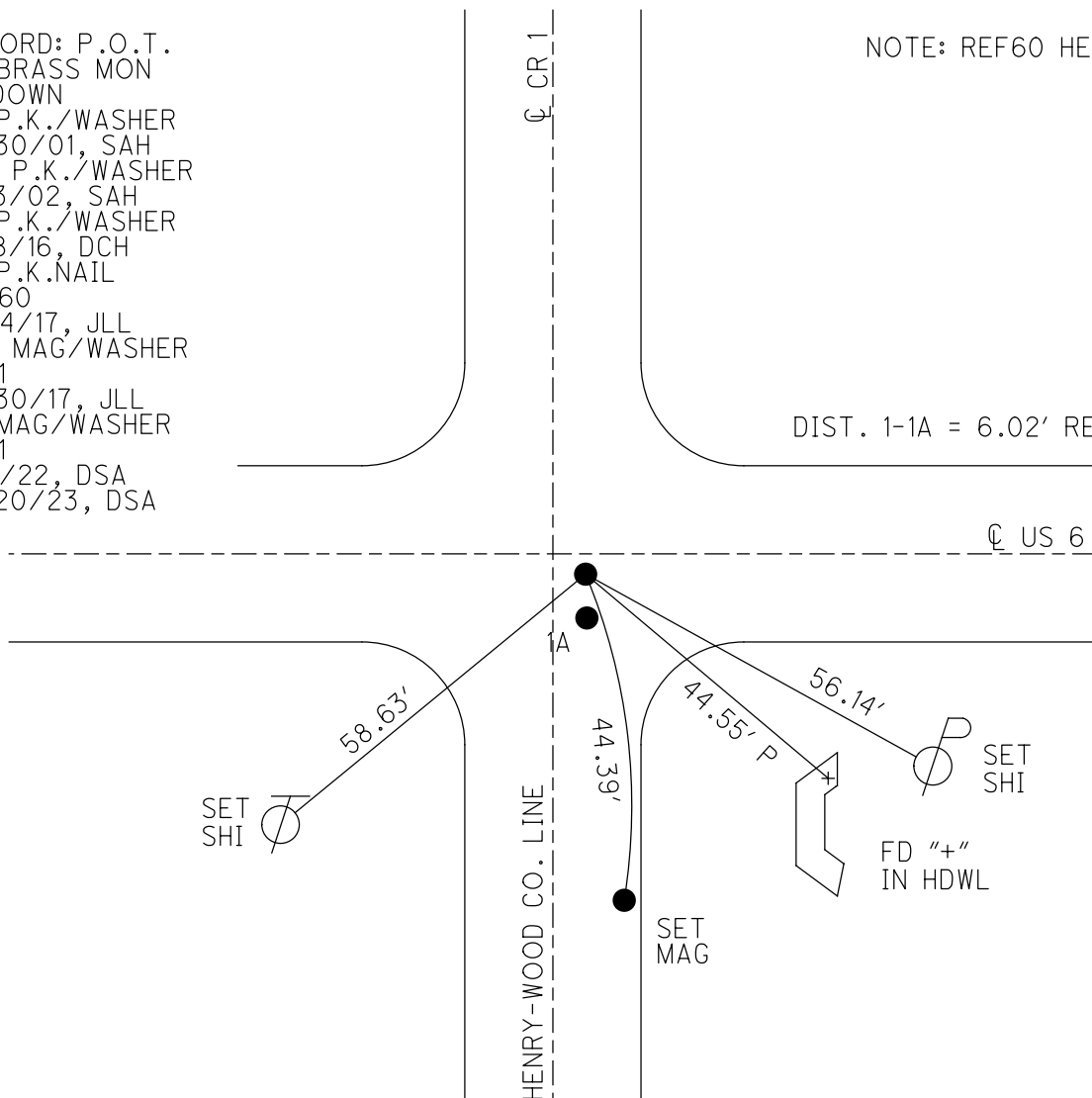
EASTING: 1588823.536



RECORD: P.O.T.
 FD BRASS MON
 3" DOWN
 FD P.K./WASHER
 10/30/01, SAH
 SET P.K./WASHER
 1/23/02, SAH
 FD P.K./WASHER
 7/18/16, DCH
 FD P.K.NAIL
 REF60
 4/24/17, JLL
 SET MAG/WASHER
 REF1
 10/30/17, JLL
 FD MAG/WASHER
 REF1
 7/7/22, DSA
 10/20/23, DSA

NOTE: REF60 HEN 6

DIST. 1-1A = 6.02' REC



O.D.O.T. DISTRICT 2 SURVEY OFFICE (USE ONLY)

PERSONNEL _____

REFERENCE NO. 1

SHEET 1 OF 22

NOTES LEU

DATE 7/18/16

ROUTE US 6

H.C. HOMAN

WEATHER CLOUDY

COUNTY WOOD

R.C. LEU

TEMP. 82°

TOWNSHIP GRAND RAPIDS

SECTION 30

DWG BY RHOADES PID 85271

T 5 N R 9 E

TYPE MONUMENT P.K./WASHER

ON SURFACE - ~~BELOW~~ ON

OFFSET \odot PAVEMENT 2.0' ~~LT~~ : RT

9.6' TO RT EDGE PAVEMENT

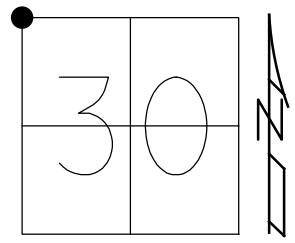
STATION: 0+00

HORIZ.DATUM: NAD83 (2011)

GEOID: NAVD88 2012A

GRID: NORTHING: 624189.987

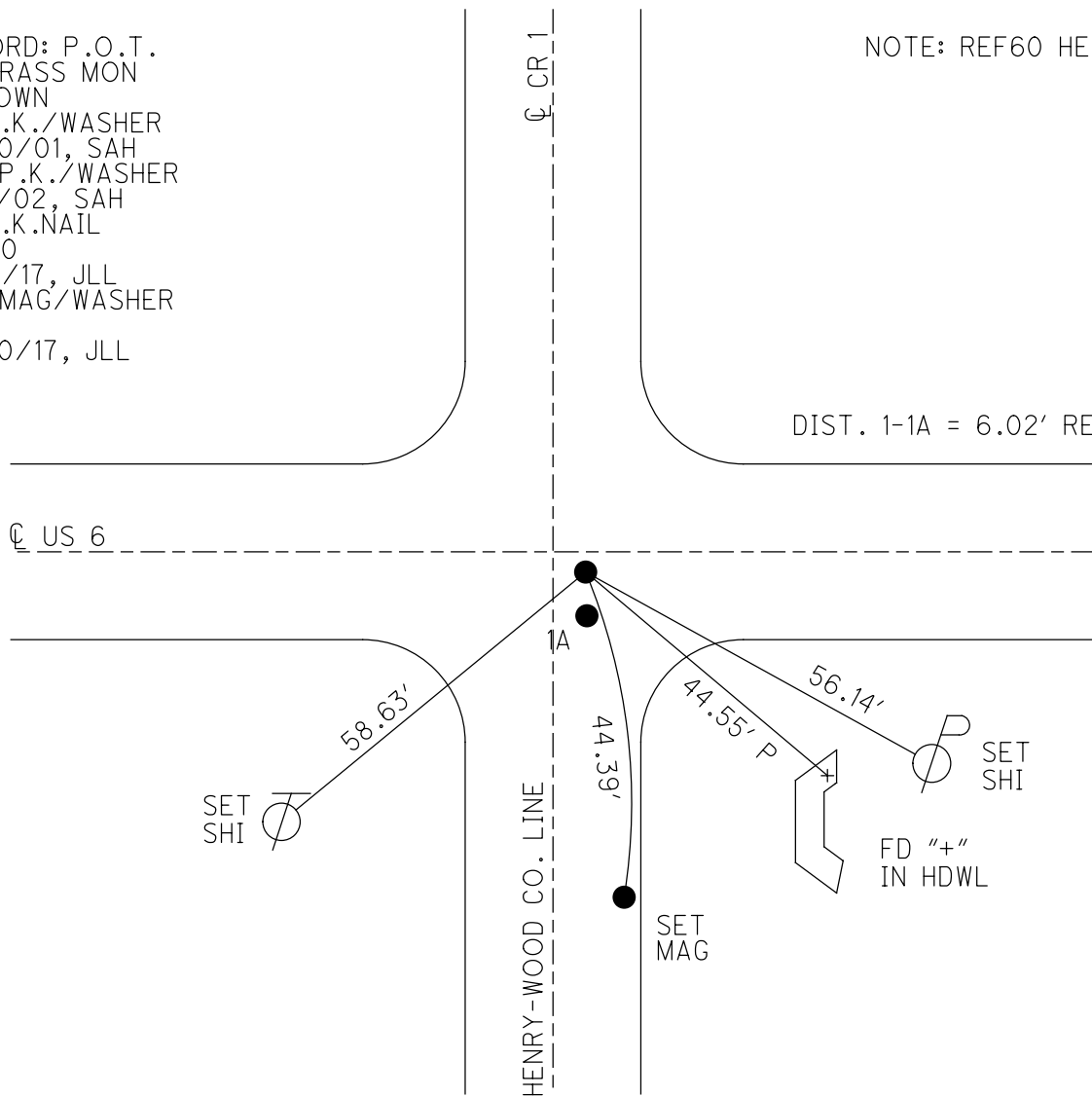
EASTING: 1588823.514



RECORD: P.O.T.
FD BRASS MON
3" DOWN
FD P.K./WASHER
10/30/01, SAH
SET P.K./WASHER
1/23/02, SAH
FD P.K.NAIL
REF60
4/24/17, JLL
SET MAG/WASHER
REF1
10/30/17, JLL

NOTE: REF60 HEN 6

DIST. 1-1A = 6.02' REC



O.D.O.T. DISTRICT 2 SURVEY OFFICE (USE ONLY)

PERSONNEL _____

REFERENCE NO. 1

SHEET 1 OF 22

NOTES LEU

DATE 7/18/16

ROUTE US 6

H.C. HOMAN

WEATHER CLOUDY

COUNTY WOOD

R.C. LEU

TEMP. 83°

TOWNSHIP GRAND RAPIDS

SECTION 30

DWG BY NIESE PID _____

T 5 N R 9 E

TYPE MONUMENT P.K./WASHER

ON SURFACE - ~~BELOW~~ ON

OFFSET C PAVEMENT 2.0' ~~±~~ : RT

9.6' TO RT EDGE PAVEMENT

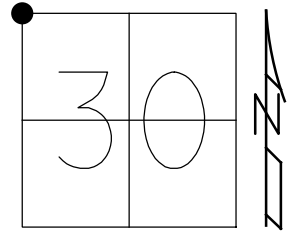
STATION: 0+00

HORZ. DATUM: NAD83 (2011)

GEOID: NAVD88 2012A

GRID: NORTHING: 624189.992

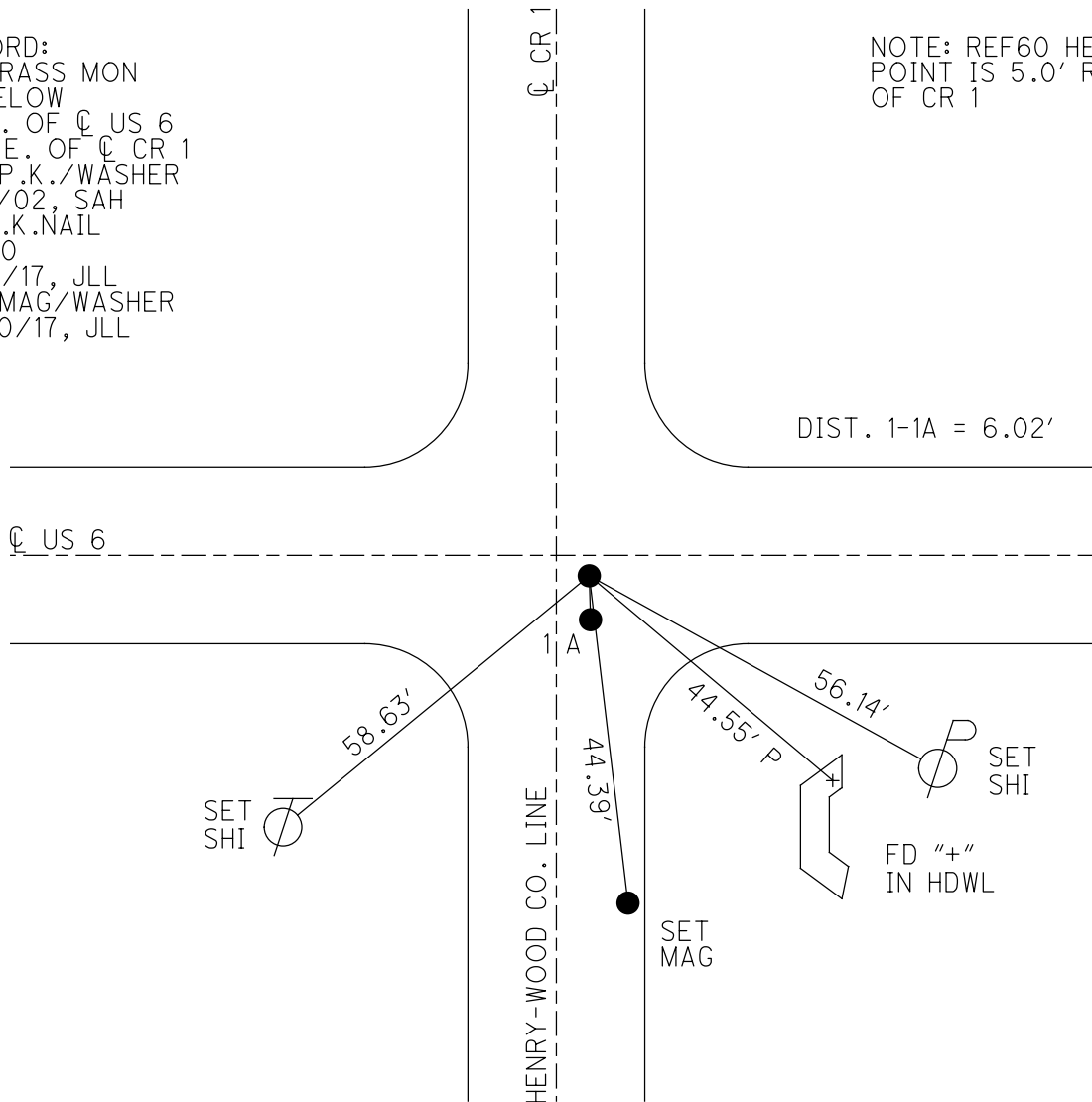
EASTING: 1588823.555



RECORD:
 FD BRASS MON
 3" BELOW
 1.9'S. OF C US 6
 5.0' E. OF C CR 1
 SET P.K./WASHER
 1/23/02, SAH
 FD P.K.NAIL
 REF60
 4/24/17, JLL
 SET MAG/WASHER
 10/30/17, JLL

NOTE: REF60 HEN 6,
 POINT IS 5.0' RT
 OF CR 1

DIST. 1-1A = 6.02'



Resurveyed 2001 & completed 2002

O.D.O.T. DISTRICT 2 SURVEY OFFICE

PERSONNEL

REFERENCE NO. 60

SHEET 6 OF 6

NOTES S. HUSS

H.C. B. VAN DUSEN

DATE 6-13-95

ROUTE U.S. 6

R.C. T. ROUSOS

WEATHER SUNNY

COUNTY HENRY

TEMP. +76° F

TOWNSHIP DAMASCUS

SECTION 25

T. 5 N R. 8 E

TYPE MONUMENT PK & WASHER

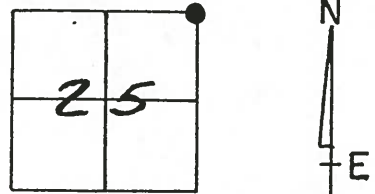
ON SURFACE - BELOW YES

~~PAV'T.~~ - RIGHT 2.0' RT. CL. U.S. 6 ~ 5.0' RT. C.R.O. 1

9.6 TO RT EDGE PAVEMENT

S.L.M. 1477+08

①



RECORD: "A" - FOUND BRASS MON.
 3" BELOW SURFACE.
 1.9' S. OF E. U.S. 6
 5.0' E. OF E. CO. RD. 1
 PT. "B" FD. PK @ SURFACE
 ORIGIN UNKNOWN.
 "POSSIBLE OFFSET"

SET PK & WASHERS
 10-10-96
 B.V.D.

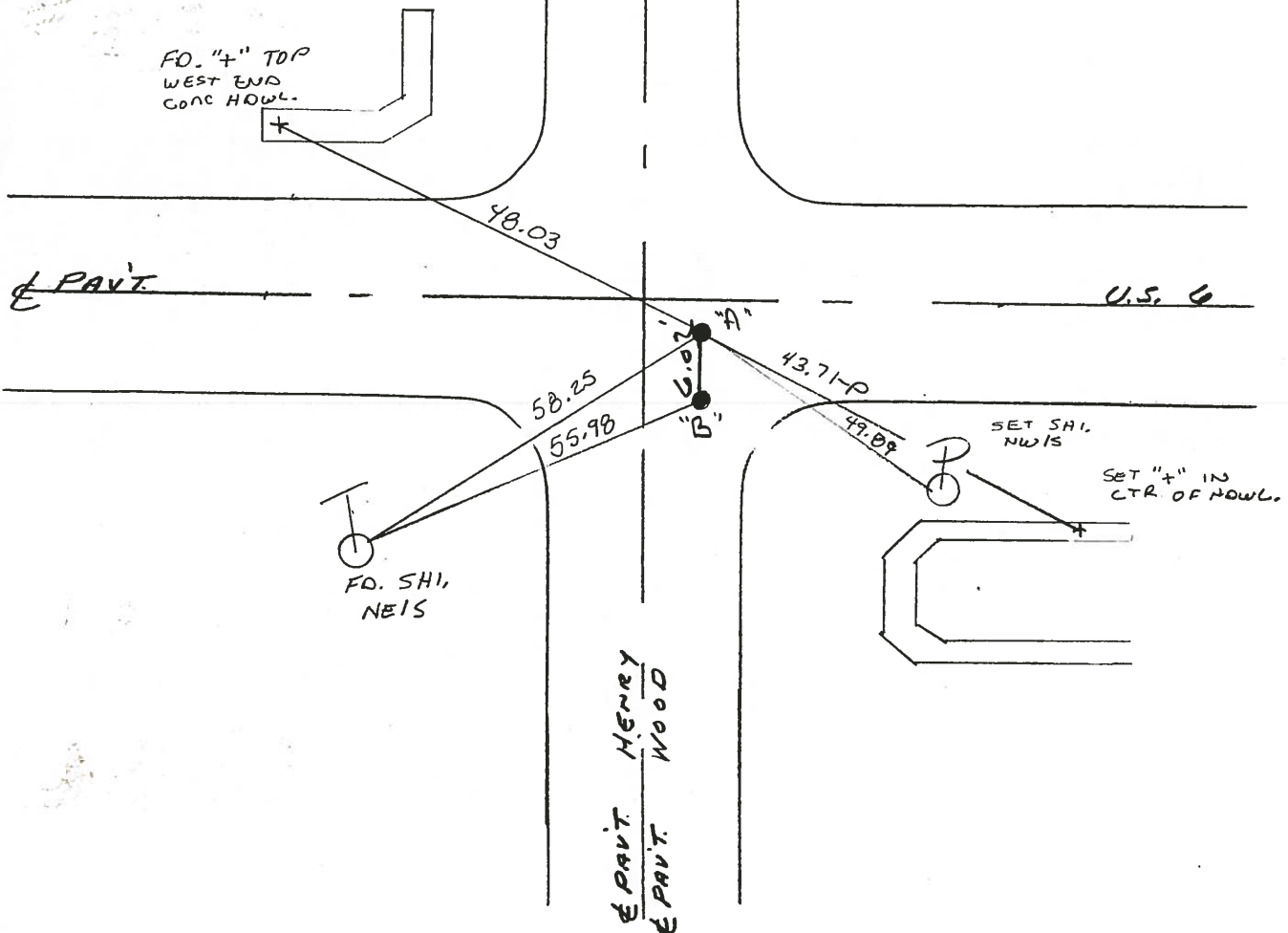
FD. "+" TOP
 WEST END
 CONC HOWL.

SET SHI.
 NWIS

SET "+" IN
 CTR. OF HOWL.

FD. SHI.
 NEIS

← PAV'T. HENRY
 ← PAV'T. WOOD



O.D.O.T. DISTRICT 2 SURVEY OFFICE

PERSONNEL

REFERENCE NO. 1

SHEET OF

NOTES HOFFMAN

H.C. BARNHISEL

R.C. LOERKE

DATE 7-24-90

WEATHER CLEAR

TEMP. 80°

ROUTE US 6

COUNTY Wood

TOWNSHIP GrandRapids

SECTION 30

T5 N R 9 E

TYPE MONUMENT SMALL R.R. SPIKE

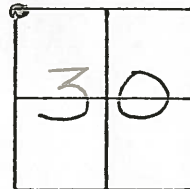
ON SURFACE - BELOW YES

LEFT - C PAV'T. - RIGHT 2.0

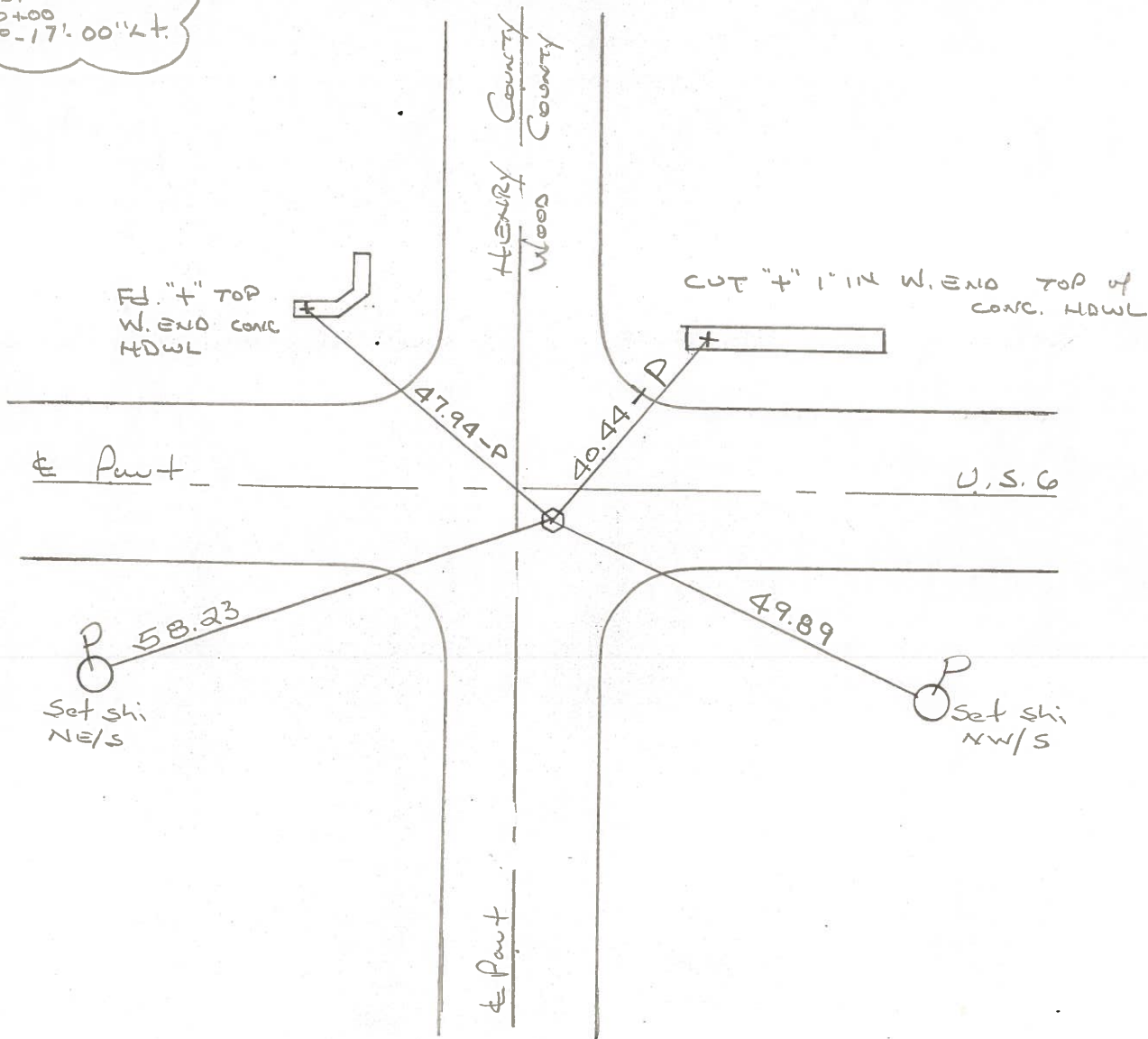
 TO EDGE PAVEMENT 2.0' E. & S.

S.L.M. 0+00

Set
P.K./WASHER
8-10-90
SW4



RECORD!
Sta 0+00
A = 0°-17'.00" L.



O.D.O.T. DISTRICT 2 SURVEY OFFICE

SHEET 1 OF

County WOOD ^{U.S.} S.R. 6

Date 6-24-74

Township GRAND RAPIDS

Weather CLEAR

Section 30

Temp. 60°

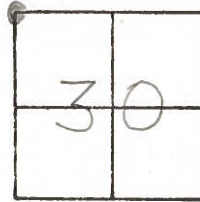
T5N, R9E

Personnel BURNSIDE

BOWERS

SMITH

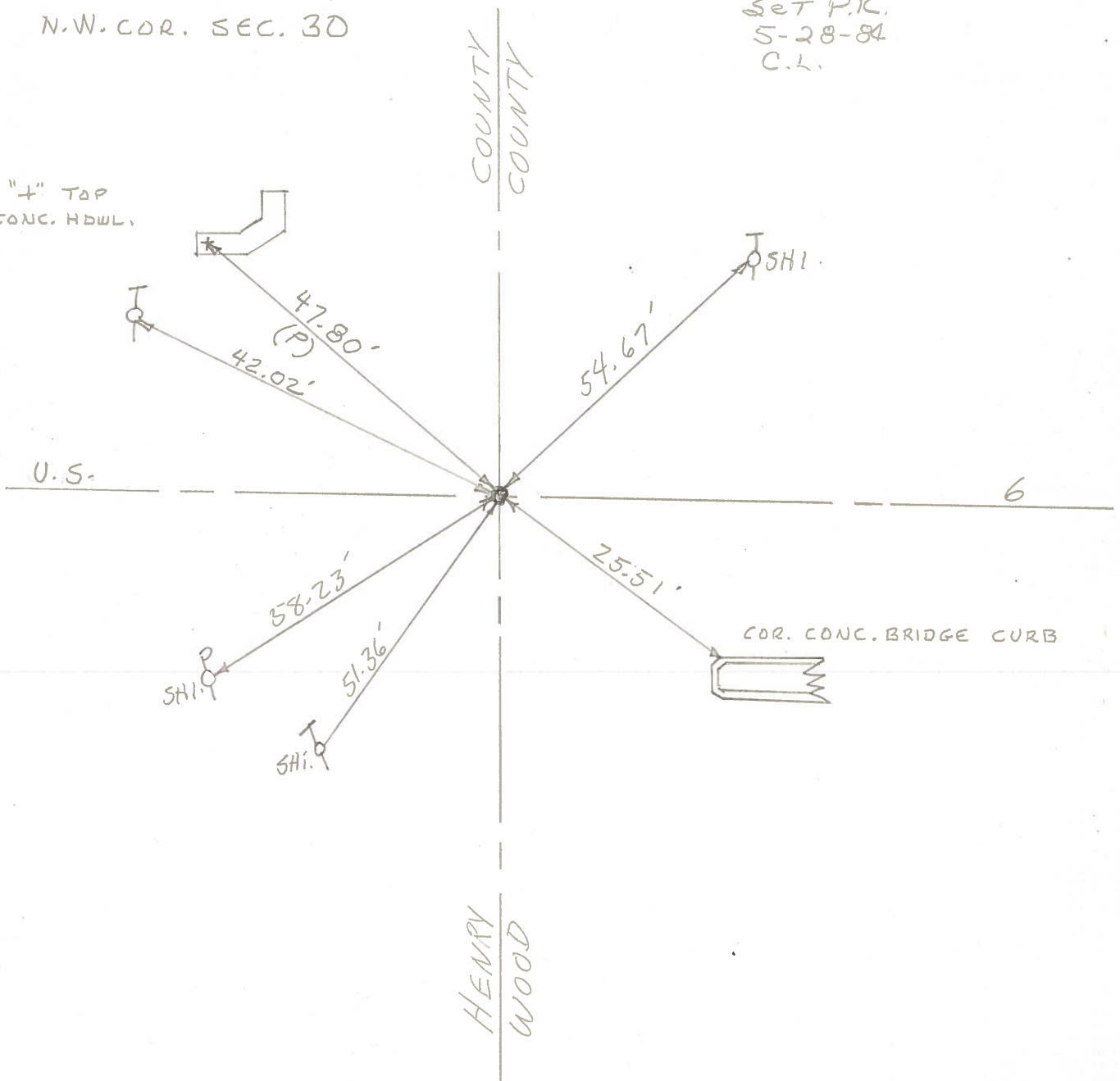
KIOWSKI



#1 STA. 0+00
 $\Delta = 0^{\circ}-17'-00''$ LT.
N.W. COR. SEC. 30

Set P.K.
5-28-84
C.L.

"+" TAP
CONC. HDWL.



County WOOD ^{U.S.} S.R. 6

Date 6-24-74

Township GRAND RAPIDS

Weather CLEAR

Section 30

Temp. 60°

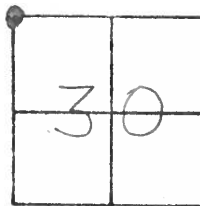
T5N, R9E

Personnel BURNSIDE

BOWERS

SMITH

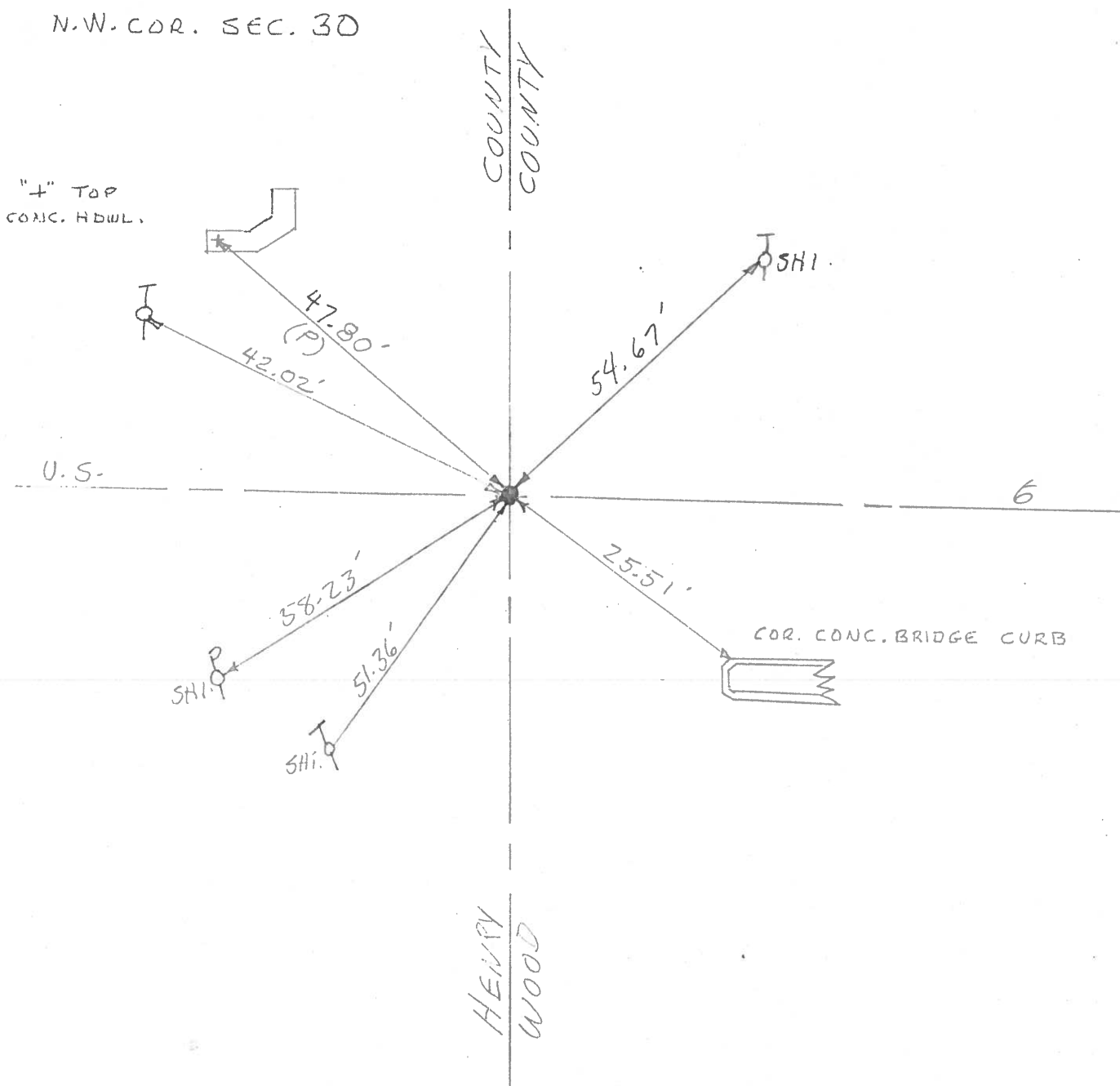
KIJOWSKI



#1 STA. 0+00
 $\Delta = 0^{\circ}-17'-00''$ LT.
N.W. COR. SEC. 30

✓ See HENRY Co. Book

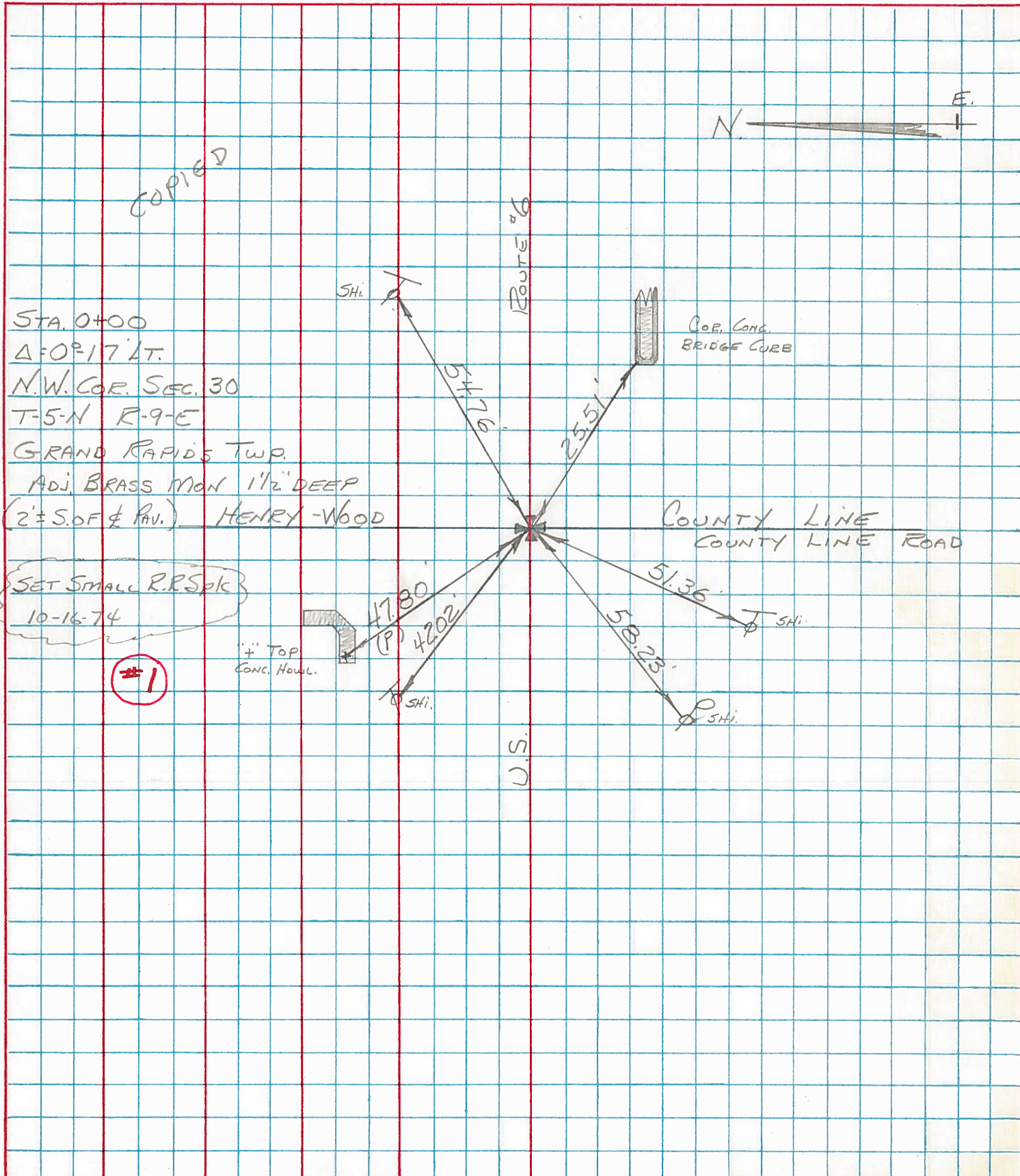
"4" TOP
CONC. HDWL.



PERSONNEL	TITLE	PERSONNEL	TITLE
BURNSIDE			
SMITH			
BOWERS			
KIJOWSKI			

COUNTY Wood DATE 6-24-74
 S. R. U.S. 6 WEATHER CLEAR
 SEC. 30 HEN-WOOD CO. LINE TEMP. +60°

DESCRIPTION _____ REF. CONTROL POINTS _____ JOB NO. _____
 LEFT CENTER LINE RIGHT



PERSONNEL TITLE PERSONNEL TITLE
 Morrison _____ Smith _____
 Bowers _____ Burnside _____
 Holcombe _____
 Kern _____

COUNTY Wood DATE FEB, 5, 1968
 S. R. US #6 WEATHER Clear
 SEC. _____ TEMP. 40°

DESCRIPTION Control points from Wood-Henry Co line East JOB NO. _____

