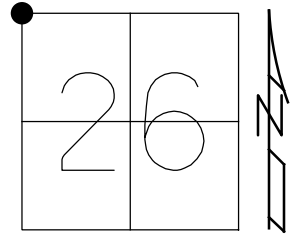


O.D.O.T. DISTRICT 2 SURVEY OFFICE (USE ONLY)

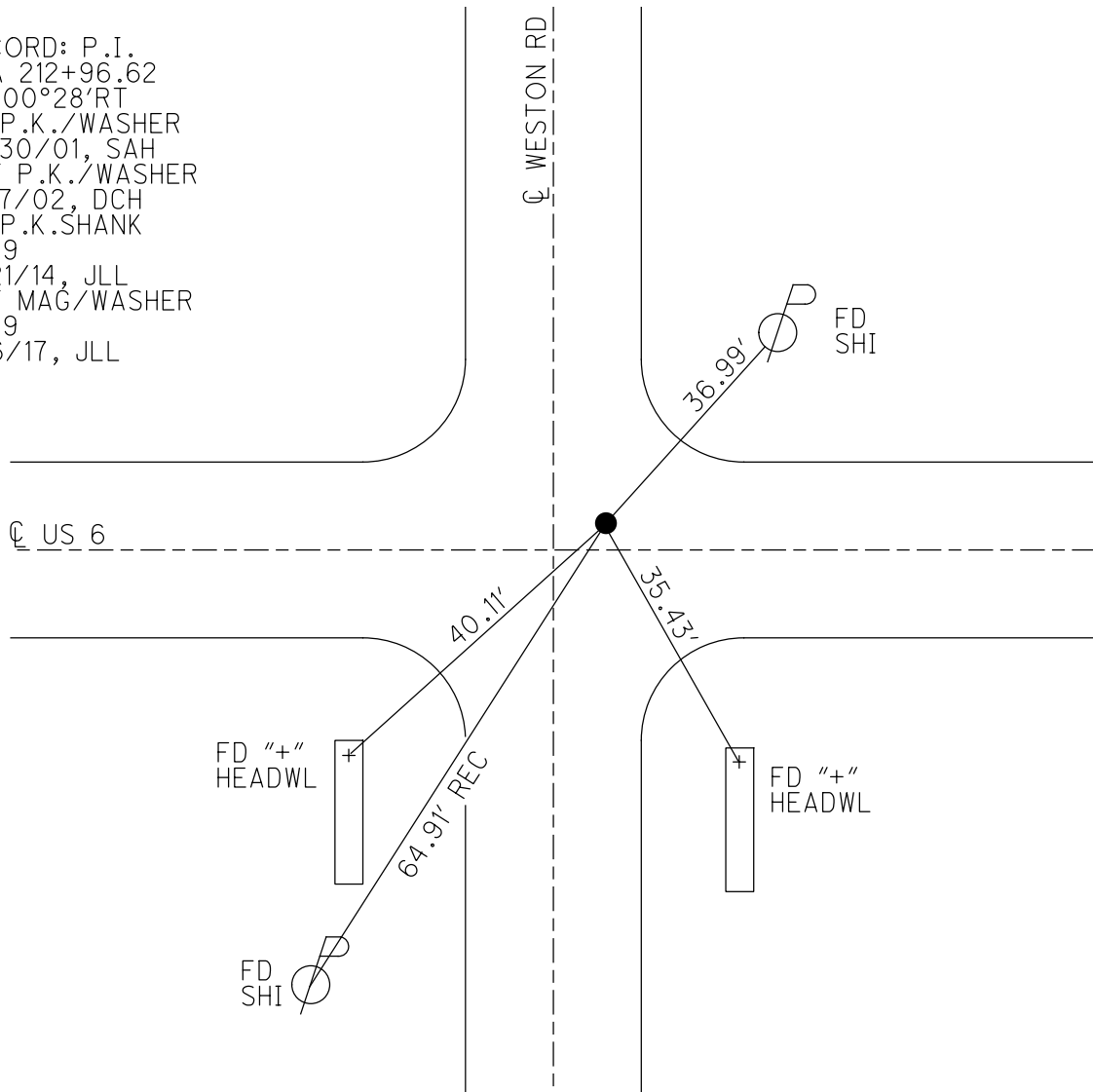
PERSONNEL \_\_\_\_\_ REFERENCE NO. 9 SHEET 11 OF 22  
 NOTES LEU DATE 7/13/16 ROUTE US 6  
 H.C. HOMAN WEATHER SUNNY COUNTY WOOD  
 R.C. KEFFER TEMP. 76° TOWNSHIP WESTON  
 DWG BY RHOADES PID 85271 SECTION 26  
 T 5 N R 9 E

TYPE MONUMENT P.K.SHANK  
 ON SURFACE - ~~BELOW~~ ON  
 OFFSET  $\odot$  PAVEMENT 1.0' LT : RT  
- TO - EDGE PAVEMENT 5.4' E  $\odot$  S  
 STATION: 212+93.06



HORZ.DATUM: NAD83 (2011) GEOID: NAVD88 2012A  
 GRID: NORTHING: 624014.861 EASTING: 1610115.760

RECORD: P.I.  
 STA 212+96.62  
 $\Delta = 00^\circ 28' RT$   
 FD P.K./WASHER  
 10/30/01, SAH  
 SET P.K./WASHER  
 6/17/02, DCH  
 FD P.K.SHANK  
 REF9  
 7/21/14, JLL  
 SET MAG/WASHER  
 REF9  
 4/6/17, JLL



O.D.O.T. DISTRICT 2 SURVEY OFFICE (USE ONLY)

PERSONNEL \_\_\_\_\_

REFERENCE NO. 9

SHEET 11 OF 22

NOTES HUSS

DATE 10/30/01

ROUTE US 6

H.C. ROUSOS

WEATHER CLOUDY

COUNTY WOOD

R.C. VAN DUSEN

TEMP. 57°

TOWNSHIP WESTON

SECTION 26

DWG BY NIESE

PID \_\_\_\_\_

T 5 N R 9 E

TYPE MONUMENT P.K./WASHER

ON SURFACE - ~~BELOW~~ ON

OFFSET ☉ PAVEMENT 1.0' LT : ~~RT~~

- TO - EDGE PAVEMENT 5.4' E ☉ PAVT. S

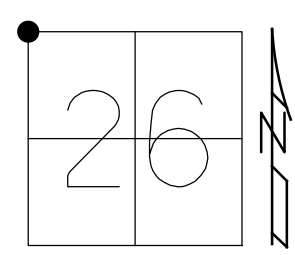
STATION: 212+98

HORIZ.DATUM: \_\_\_\_\_

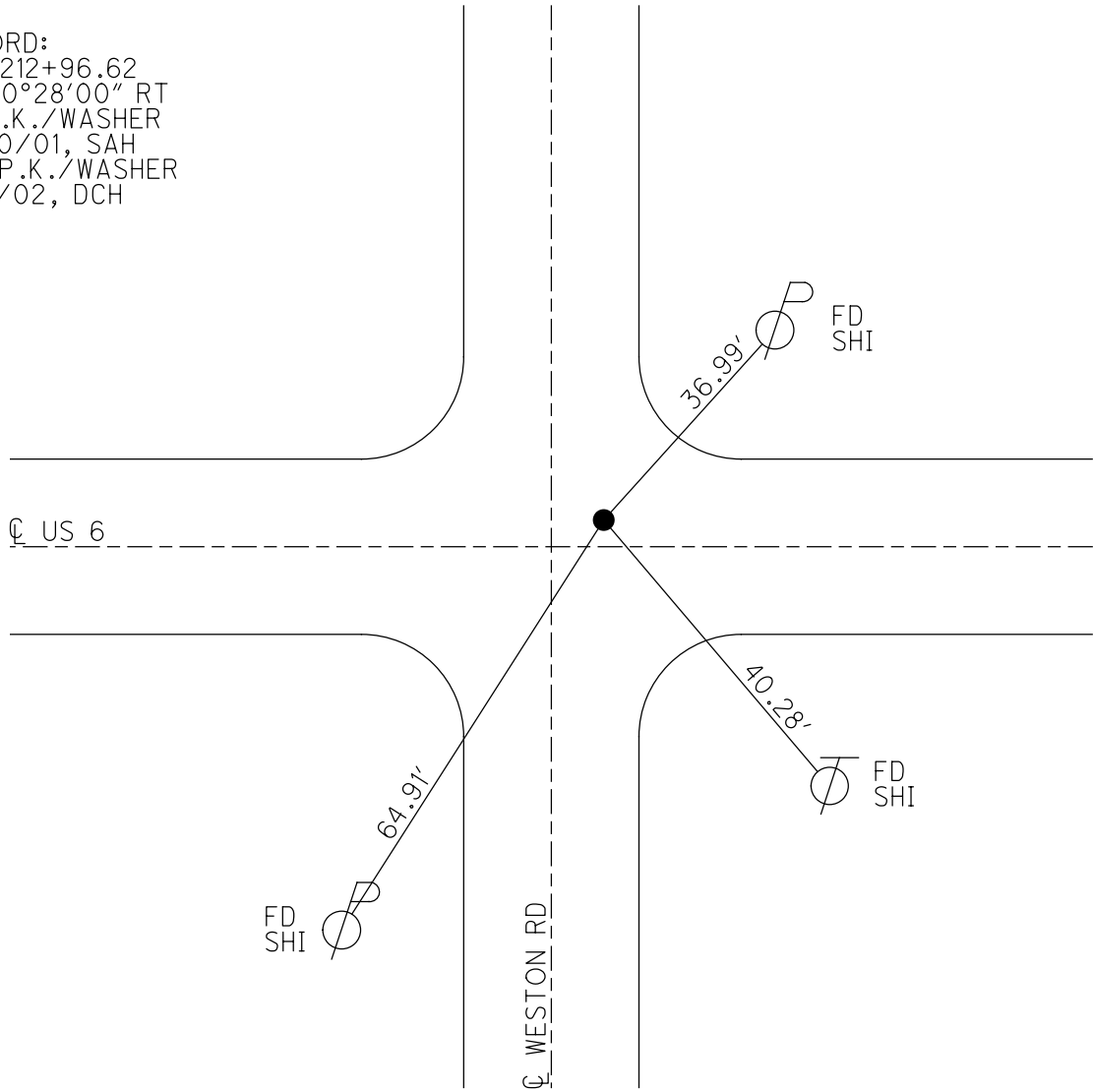
GEOID: \_\_\_\_\_

GRID: NORTHING: \_\_\_\_\_

EASTING: \_\_\_\_\_



RECORD:  
 STA 212+96.62  
 $\Delta = 00^{\circ}28'00''$  RT  
 FD P.K./WASHER  
 10/30/01, SAH  
 SET P.K./WASHER  
 6/17/02, DCH



# O.D.O.T. DISTRICT 2 SURVEY OFFICE

PERSONNEL

REFERENCE NO. 9

SHEET 10 OF 12

NOTES Huss

H.C. Rousos

DATE 10-30-01

ROUTE US 6

R.C. Van Dussen

WEATHER Cloudy

COUNTY Wood

TEMP. 57°

TOWNSHIP Weston

SECTION 26

T. 5 N. R. 9 E.

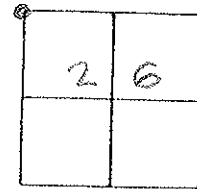
TYPE MONUMENT PK & Washer

ON SURFACE - BELOW Yes

LEFT - ~~E~~ PAV'T. - RIGHT 1.0'

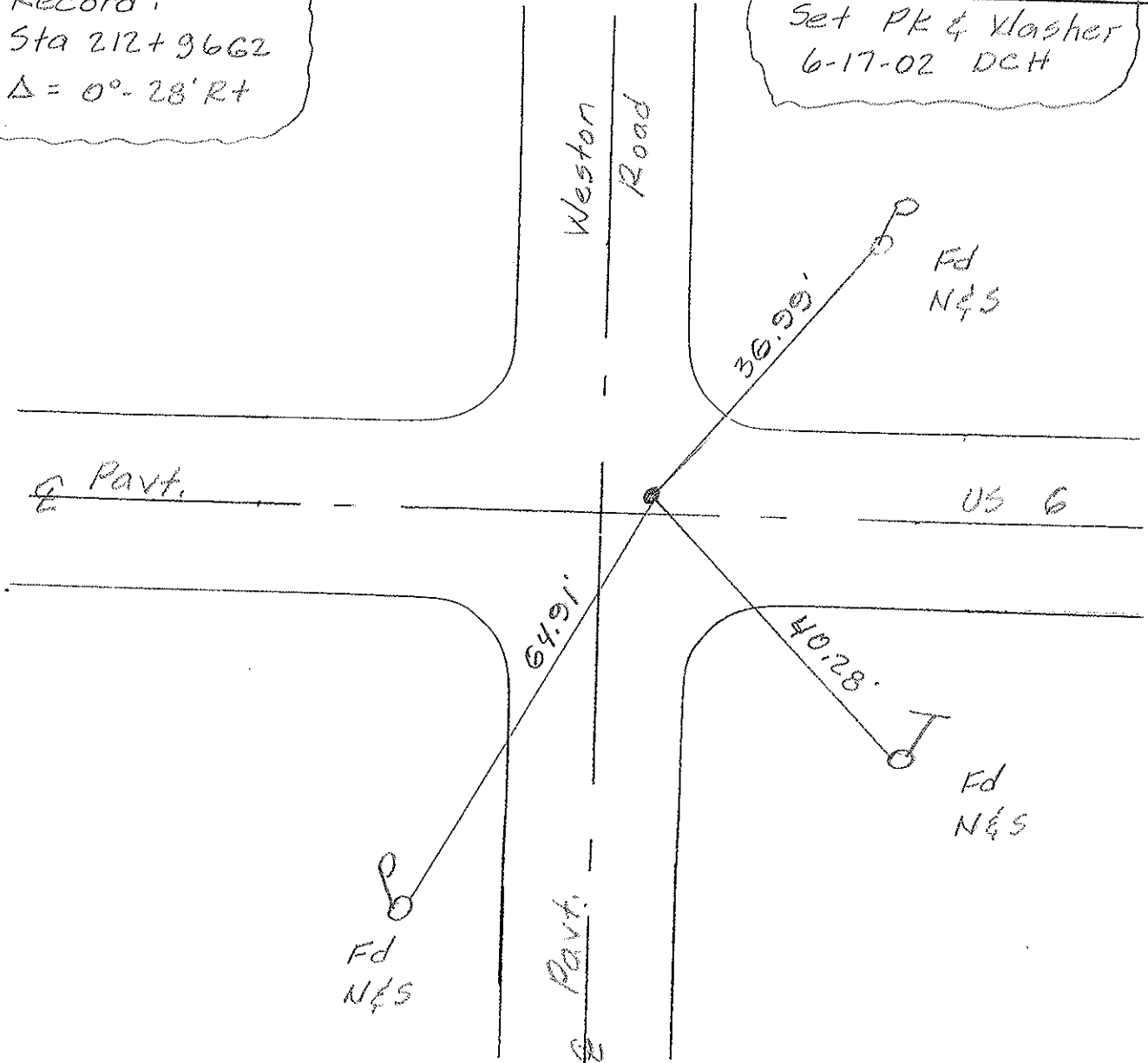
TO EDGE PAVEMENT 54' E & Pavt. S

S.L.M. 212+98



Record:  
Sta 212+9662  
 $\Delta = 0^\circ - 28' R+$

Set PK & Washer  
6-17-02 DCH



# O.D.O.T. DISTRICT 2 SURVEY OFFICE

PERSONNEL \_\_\_\_\_

REFERENCE NO. 9

SHEET \_\_\_\_\_ OF \_\_\_\_\_

NOTES HOFFMAN

H.C. BARNHISEL

DATE 7-24-90

ROUTE US 6

R.C. LOEHRS

WEATHER CLEAR

COUNTY WOOD

TEMP. 80

TOWNSHIP WESTON

SECTION 26

T5 N R 9 E

TYPE MONUMENT P.I. / WASHER

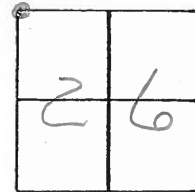
Set  
P.I. / WASHER  
8-10-90  
SWH

ON SURFACE - BELOW YES

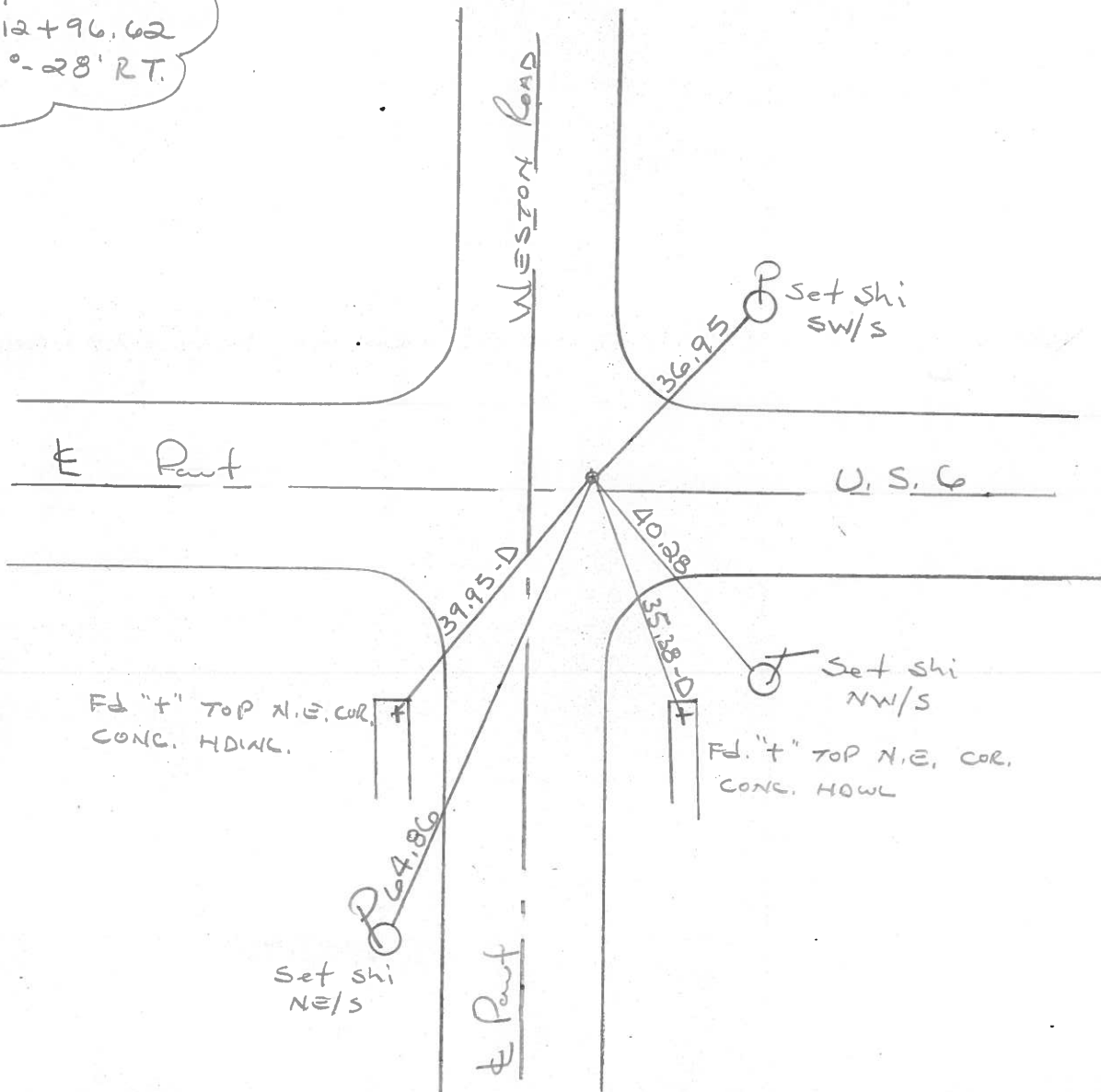
LEFT - C PAV'T. - RIGHT 1.0'

TO EDGE PAVEMENT 5.4' E. & Pmts.

S.L.M. 212+98



Records:  
Sta. 212+96.62  
 $\Delta = 0^\circ - 28' RT.$



County Wood <sup>U.S.</sup> S.R. 6

Date 3-25-83

Township Weston

Weather P. Cloudy

Section 26

Temp. +35°

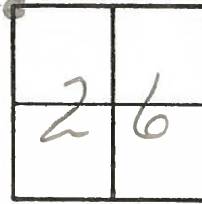
T5N, R9E

Personnel Hoffman

Householder

Barnhisel

#9

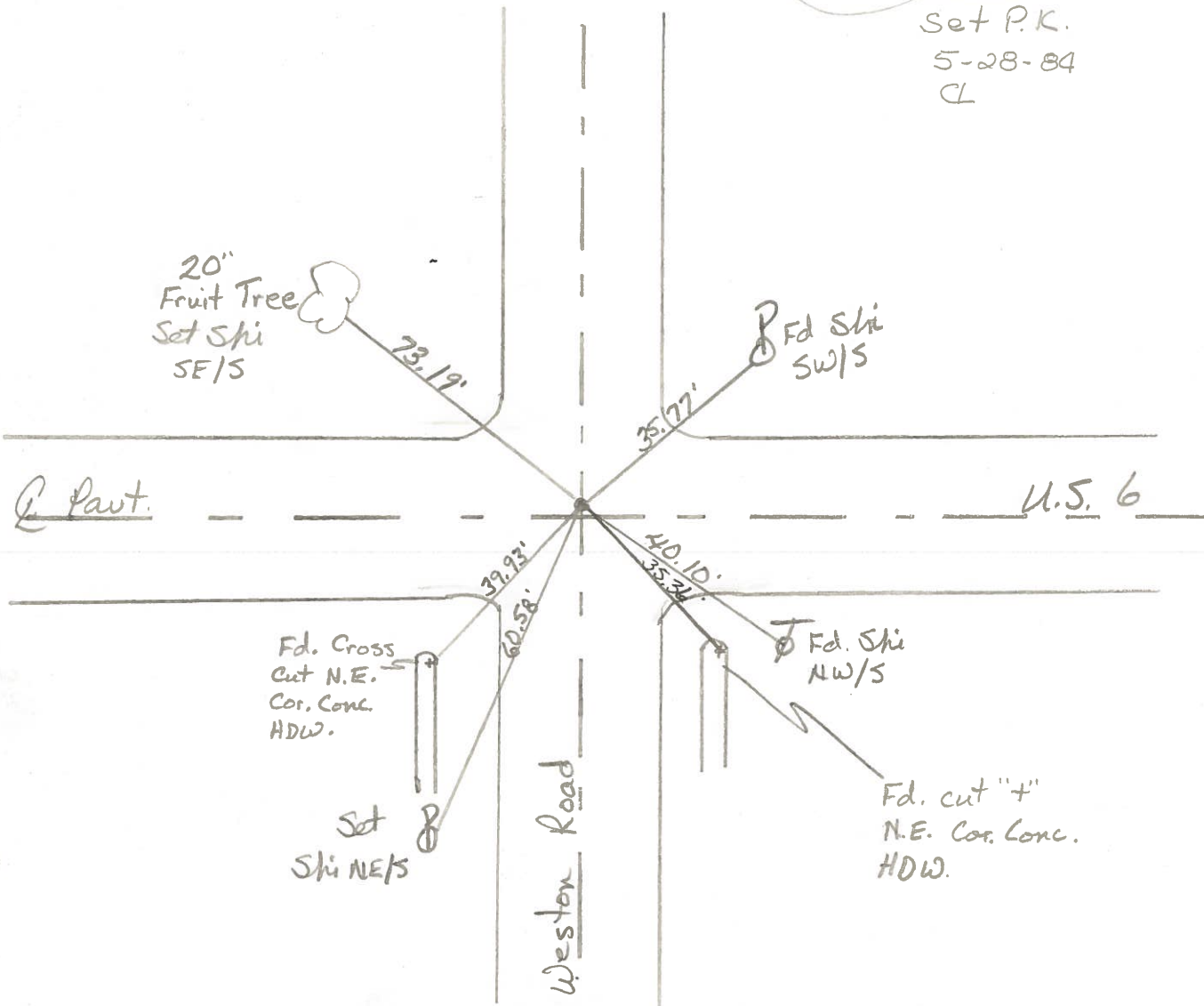


Fd. P.K. Nail @ surface  
1' N. & Part. U.S. 6  
5.4' E of & Weston South

Sta. 212+98

Record: 212+96.62  
Δ = 0°-28' Rt.

Set P.K.  
5-28-84  
CL



County WOOD <sup>U.S.</sup> S.R. 6

Date 6-24-74

Township WESTON

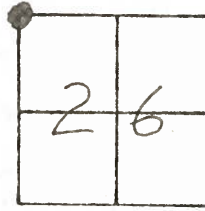
Weather CLEAR

Section 26

Temp. 66°

T5N, R9E

Personnel BURNSIDE  
SMITH  
BOWERS  
KIJOWSKI



#9 ✓ STA. 212+96.62  
 $\Delta = 0^\circ 28' RT.$

Sta. 212+98

1' N & Part Rt. 6

P.K. NAIL OVER ADJ. BRASS MON.

5.4' E of 22 West on S

Fd. P.K. Nail @ Surface

3-25-83 Hoffman  
 Cloudy Householder  
 35° Barnhisel

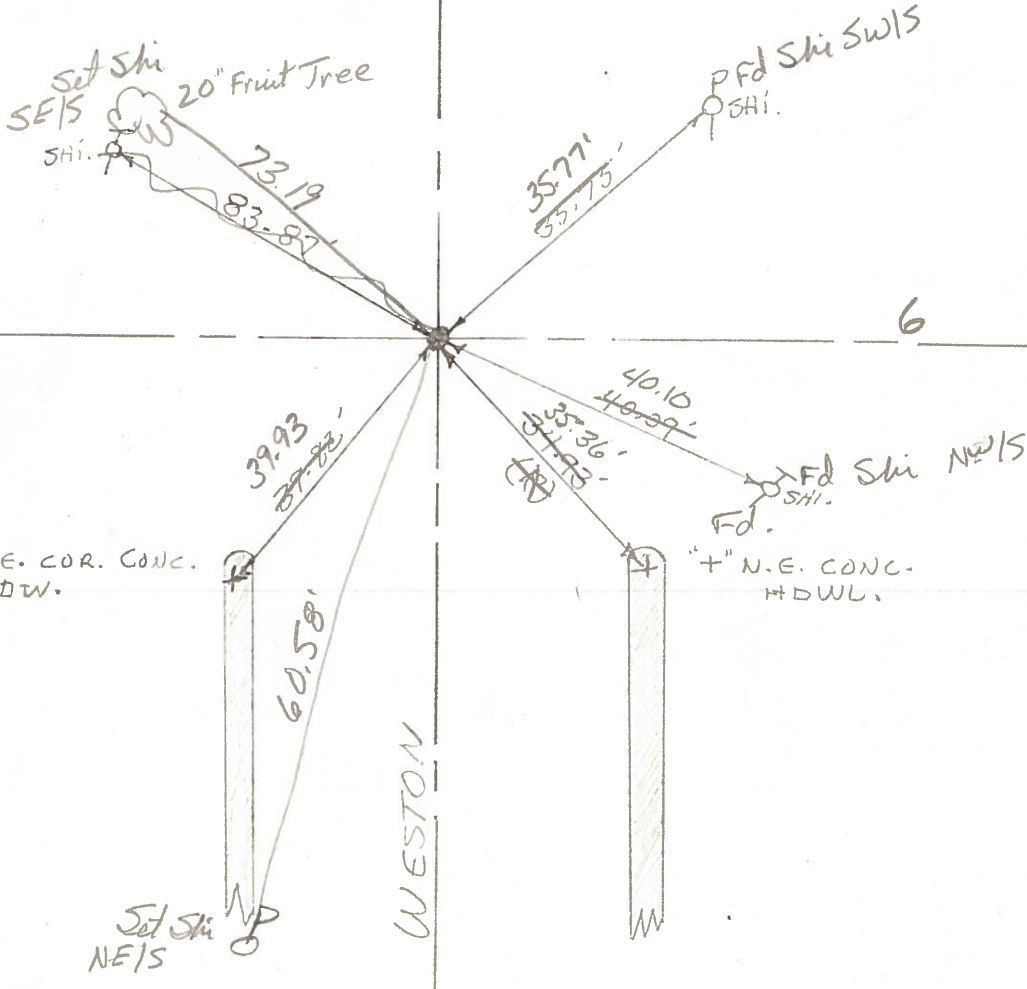
ROAD

U.S.

6

Fd.  
 " + " N.E. COR. CONC.  
 HDWL.

Fd. SHI.  
 " + " N.E. COR. CONC.  
 HDWL.



County WOOD <sup>U.S.</sup> ~~S.R.~~ 6

Date 6-24-74

Township WESTON

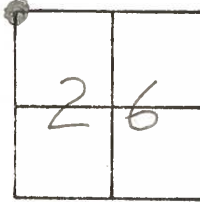
Weather CLEAR

Section 26

Temp. 66°

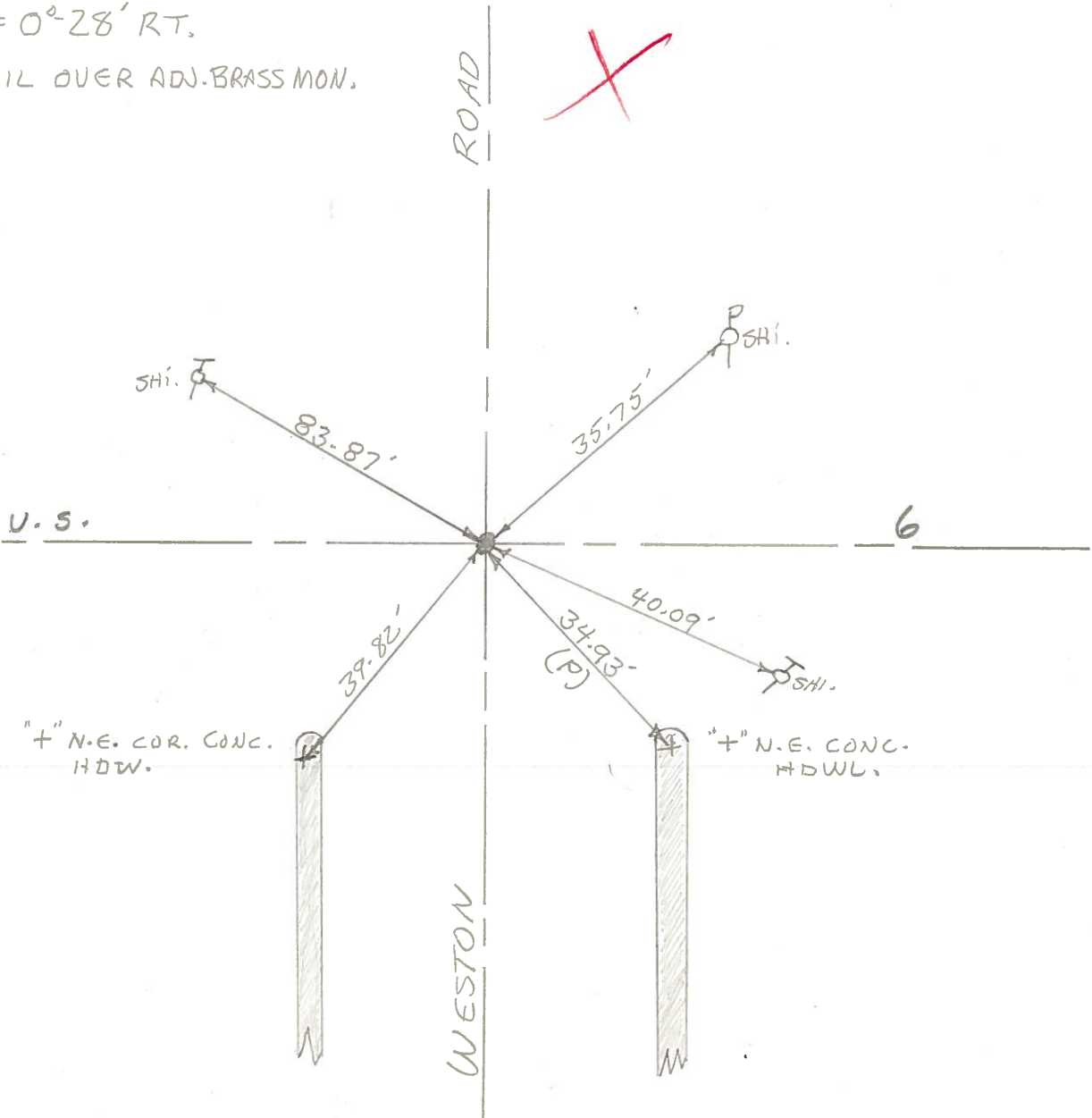
T5N, R9E

Personnel BURNSIDE  
SMITH  
BOWERS  
KIOWSKI



#9 STA. 212+96.62  
 $\Delta = 0^{\circ}28' RT.$

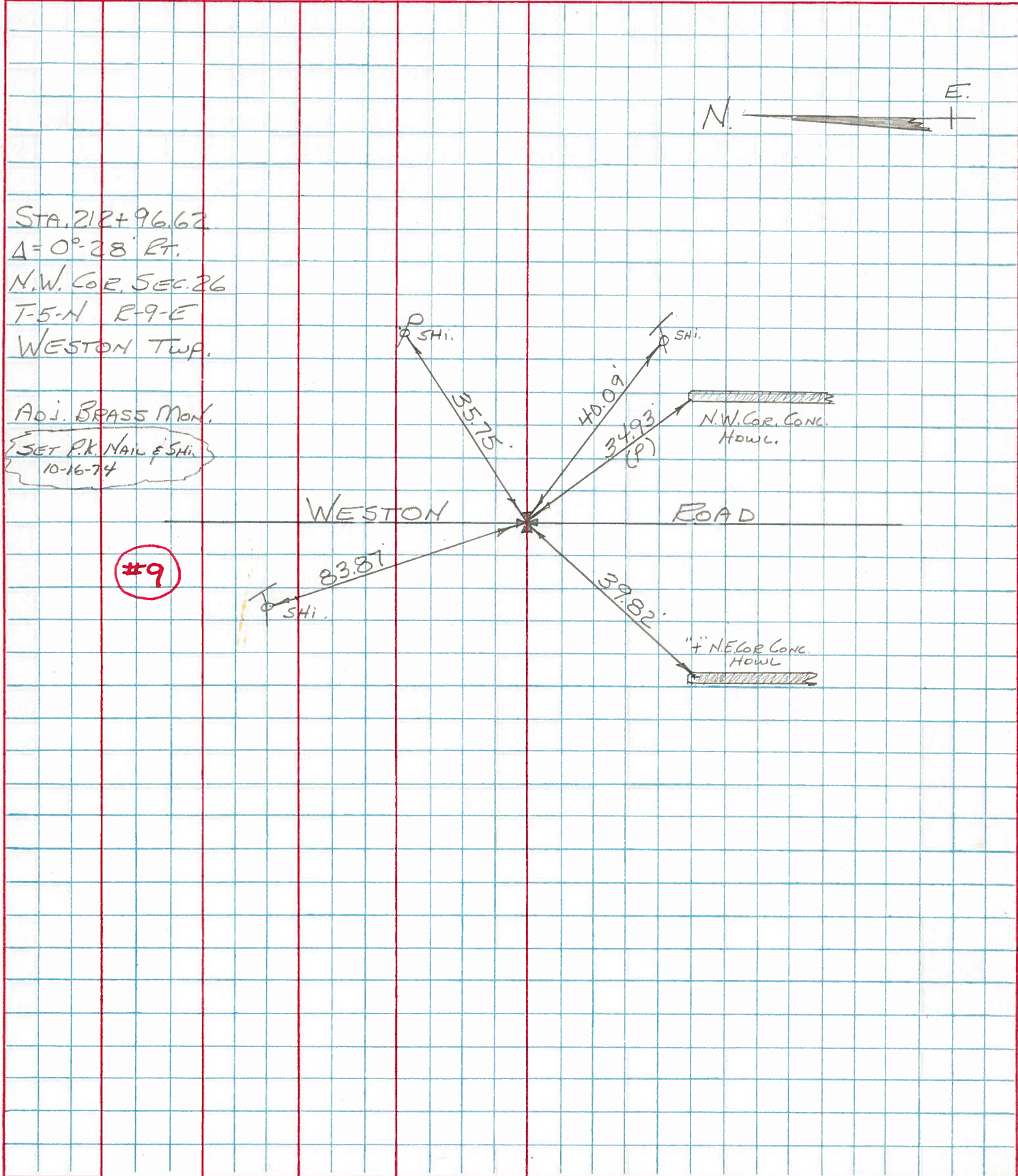
P.K. NAIL OVER ADJ. BRASS MON.



PERSONNEL	TITLE	PERSONNEL	TITLE
BURNSIDE			
SMITH			
BOWERS			
KIJOWSKI			

COUNTY Wood DATE 6-24-74  
 S. R. U.S. 6 WEATHER Cloudy  
 SEC. N.W. COR. SEC. 26 TEMP. +66°

DESCRIPTION CONTROL TIES JOB NO. \_\_\_\_\_  
 LEFT CENTER LINE RIGHT

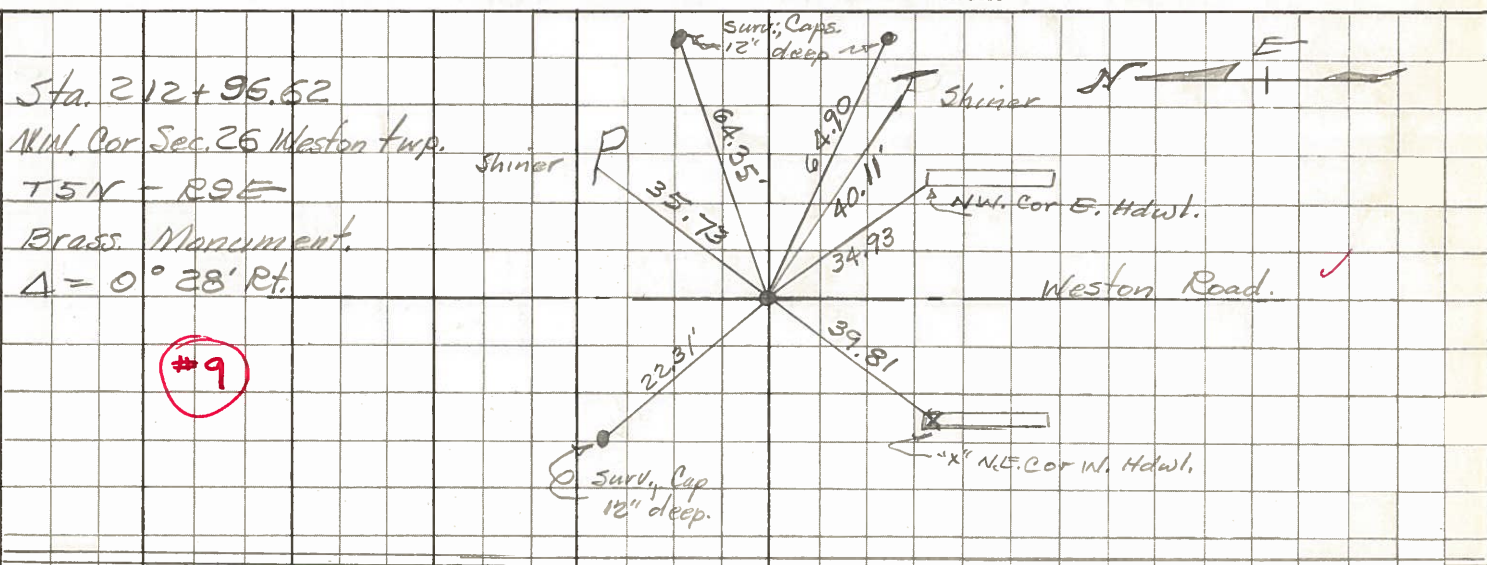




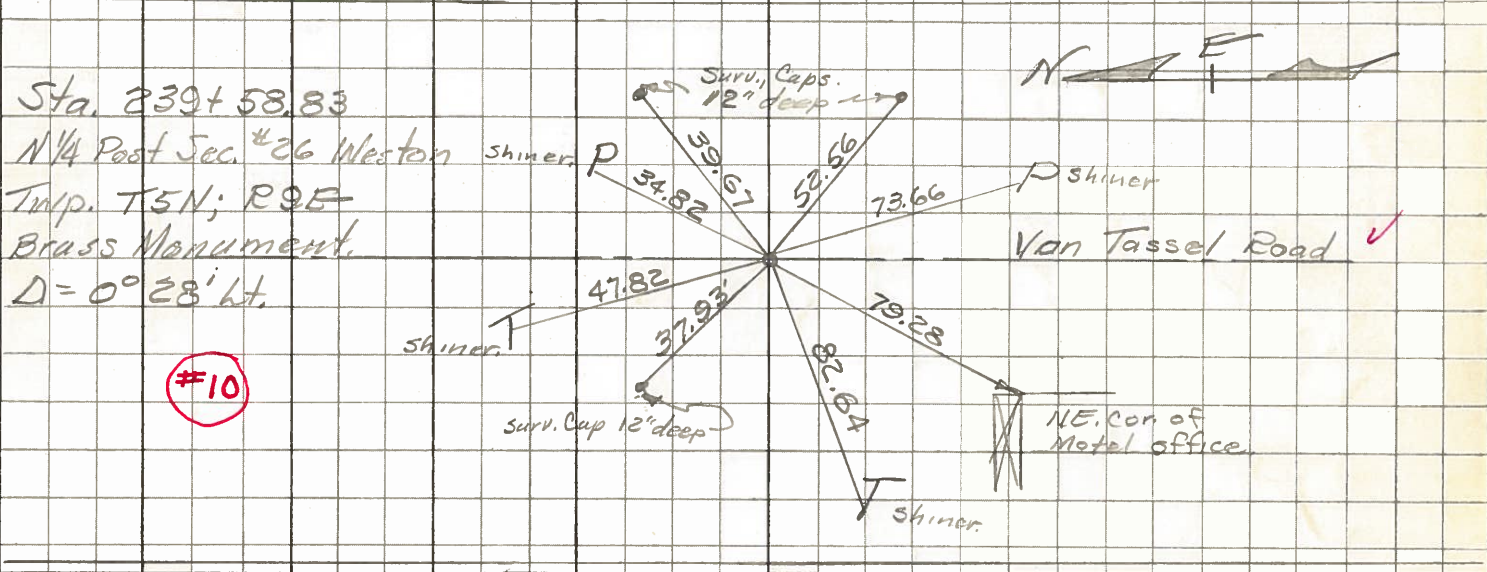
PERSONNEL TITLE PERSONNEL TITLE  
 Morrison \_\_\_\_\_ Smith \_\_\_\_\_  
 Bowers \_\_\_\_\_ Burnsides \_\_\_\_\_  
 Holcombe \_\_\_\_\_  
 Kern \_\_\_\_\_

COUNTY Wood DATE March 19, 1968  
 S. R. US#6 WEATHER Cloudy  
 SEC. \_\_\_\_\_ TEMP. +50°

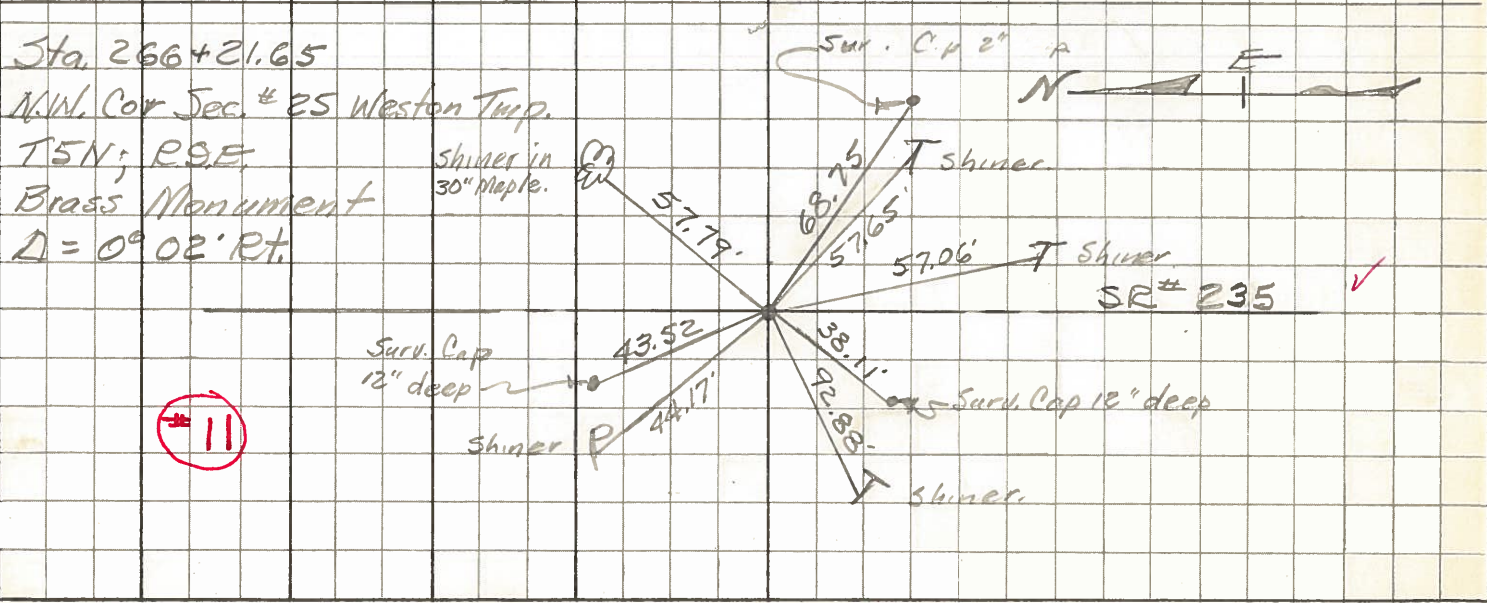
DESCRIPTION Control Points from 1 d East JOB NO. \_\_\_\_\_  
 LEFT CENTER LINE RIGHT



#9



#10



#11

PERSONNEL TITLE PERSONNEL TITLE

COUNTY Wood

DATE OK 3-24-58

S. R. U.S. #6

WEATHER

5-9-62

SEC.

TEMP.

DESCRIPTION

LEFT

CENTER LINE

RIGHT

JOB NO.

Sta. 186+57.70

N<sup>1</sup>/<sub>4</sub> Post Sec. 27 Weston

Twp. T5N-R9E. Fd. non pin

Δ = 0°-10' Lt.

BRASS Mon.

#9 ok.

8

N.E. Cor. Blk. house Fdn.

59.0

S.W. 58.9

N.W. " " " "

S.W. 67.05

Shiner in T. pole

S. 26.85

Shiner in P. Pole

N. 28.07

Sta. 212+96.62

N.W. Cor. Sec. 26 Weston

Twp. T5N-R9E. Fd. RR Spk

Δ = 0°-28' Rt

BRASS Mon.

#10 ok.

9

34.93 N.W. Cor. E. Hdwl.

S.E. 34.99 35.31

39.81 X N.E. " W. " "

S.W. 39.75

35.73 Shiner in P.P.

N.E. 35.89 35.9

Gone U.S. #6, #7

N.E. 35.2

40.11 Shi. in T. Pole

S.E. 40.15

Sta. 239+58.83

N<sup>1</sup>/<sub>4</sub> Post Sec. 26 Weston

Twp. T5N-R9E. Fd. RR Spk

Von Tassel Rd. BRASS Mon.

Δ = 0°-28' Lt.

#11 ok.

10

34.82 Shiner in P.P.

N.E. 33.6

~~Shiner in T. Pole~~

~~N.W. 36.0~~

79.28 N.E. Cor. Fdn. Stone

S.W. 79.2

73.66 Shiner in P.P.

S.S.E. 73.58 73.6

47.82 " " T.P.

N.W. 47.91 47.8

82.64 " " T.P.

W.S.W.

Sta. 266+31.65

N.W. Cor. Sec. 26 Weston Twp

T5N-R9E. Fd. RR Spike BRASS Mon

Inter. U.S. #6 & S.E. #69

Δ = 0°-02' Rt. Fwd.

#12 ok.

11

Gone Center of square Conc. mt.

N.W. 40.9

57.79 Shiner in 24" maple

N.E. 57.7

" " T.P.

S.E. 57.06

92.88 " " T.P.

W.S.W. 73.2

44.17 Shiner in P.P.

N.W. 44.1

57.65 Shiner in T.P. S.E.