

O.D.O.T. DISTRICT 2 SURVEY OFFICE (USE ONLY)

PERSONNEL

REFERENCE NO. 11

SHEET 13 OF 24

NOTES MILLER DATE 1/13/23

ROUTE US 6

H.C. NIESE WEATHER SNOWING

COUNTY WOOD

R.C. AUBLE TEMP. 23°

TOWNSHIP WESTON

RHOADES

SECTION 25

DWG BY RHOADES PID 95801

T 5 N R 9 E

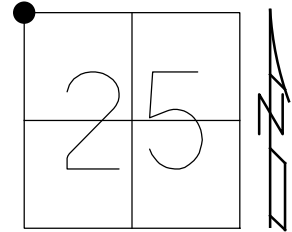
TYPE MONUMENT MAG/WASHER

ON SURFACE - ~~BELOW~~ ON

OFFSET \varnothing PAVEMENT ON LT : RT

- TO - EDGE PAVEMENT 2.0' W \varnothing S

STATION: 266+21



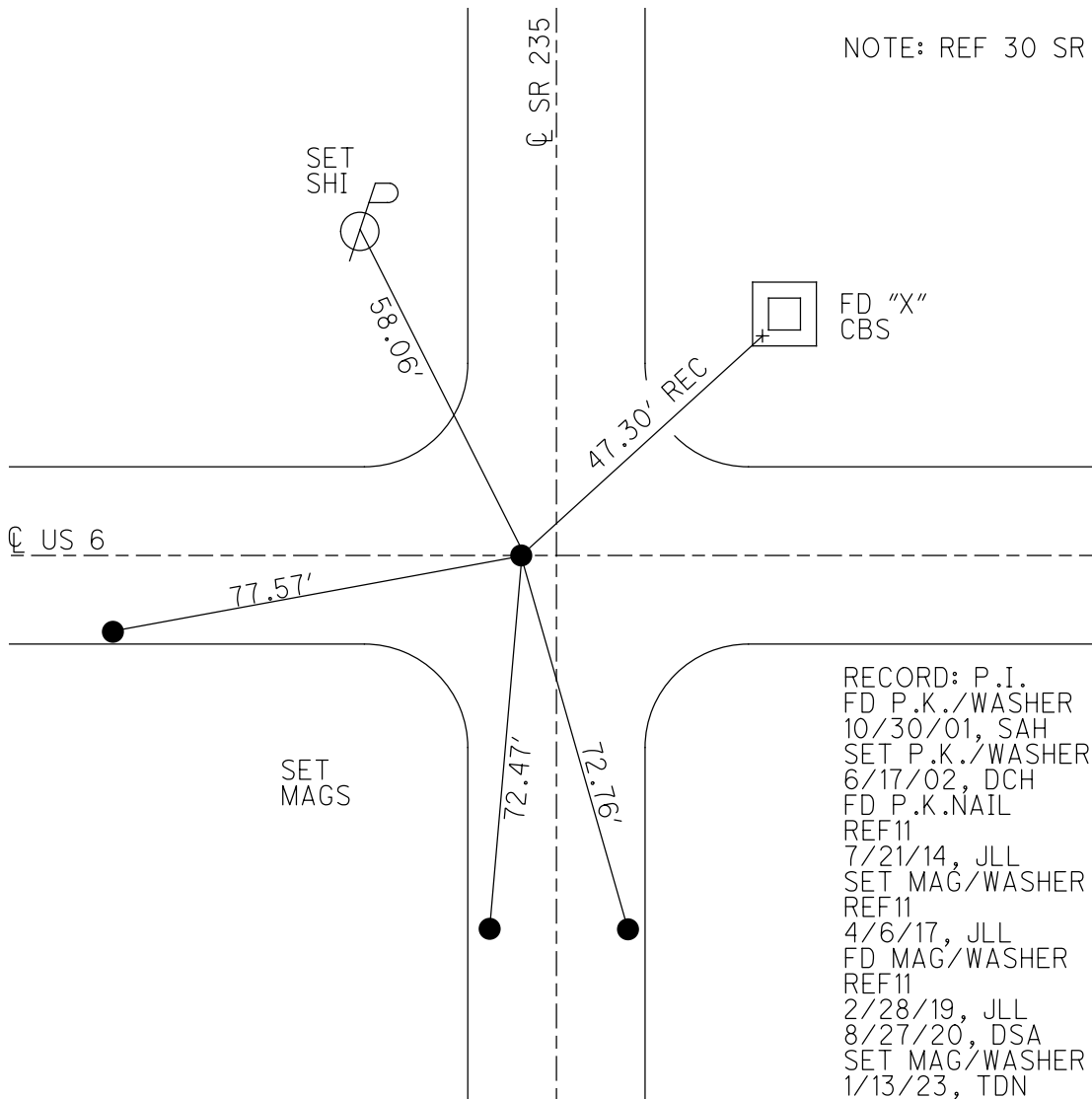
HORZ.DATUM: NAD83 (2011)

GEOID: NAVD88 2012A

GRID: NORTHING: 623961.810

EASTING: 1615438.604

NOTE: REF 30 SR 235



O.D.O.T. DISTRICT 2 SURVEY OFFICE (USE ONLY)

PERSONNEL

REFERENCE NO. 11

SHEET 13 OF 22

NOTES LEU

DATE 7/13/16

ROUTE US 6

H.C. HOMAN

WEATHER SUNNY

COUNTY WOOD

R.C. KEFFER

TEMP. 76°

TOWNSHIP WESTON

DWG BY RHOADES PID 85271

SECTION 25

T 5 N R 9 E

TYPE MONUMENT P.K./WASHER

ON SURFACE - ~~BELOW~~ ON

OFFSET C PAVEMENT ON LT : RT

- TO - EDGE PAVEMENT 2.0' W C S

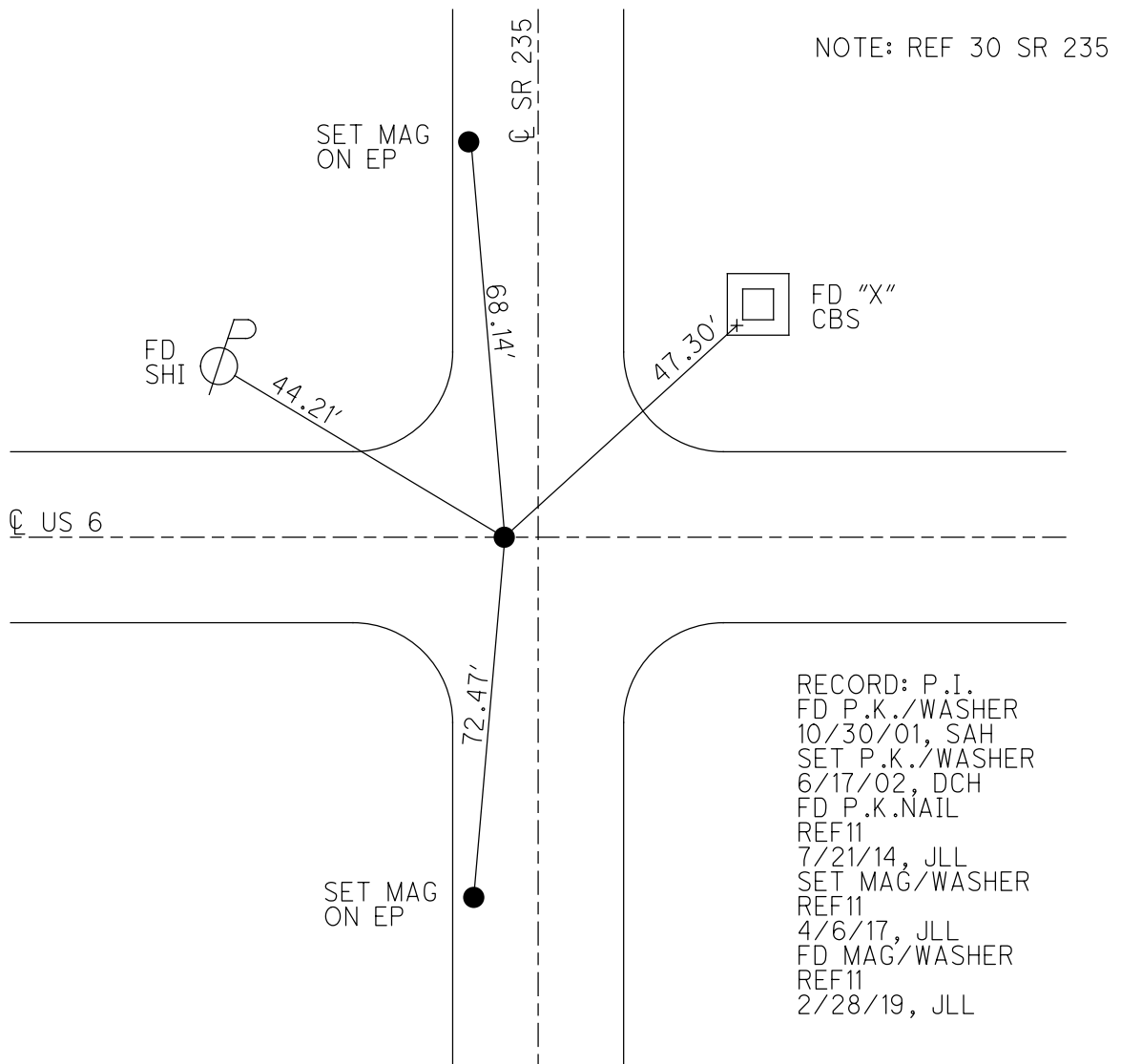
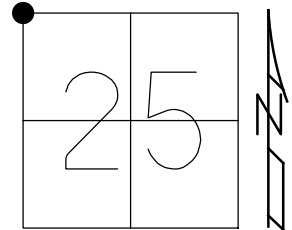
STATION: 266+16.28

HORZ.DATUM: NAD83 (2011)

GEOID: NAVD88 2012A

GRID: NORTHING: 623961.810

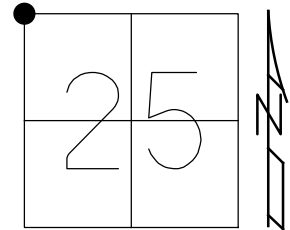
EASTING: 1615438.604



O.D.O.T. DISTRICT 2 SURVEY OFFICE (USE ONLY)

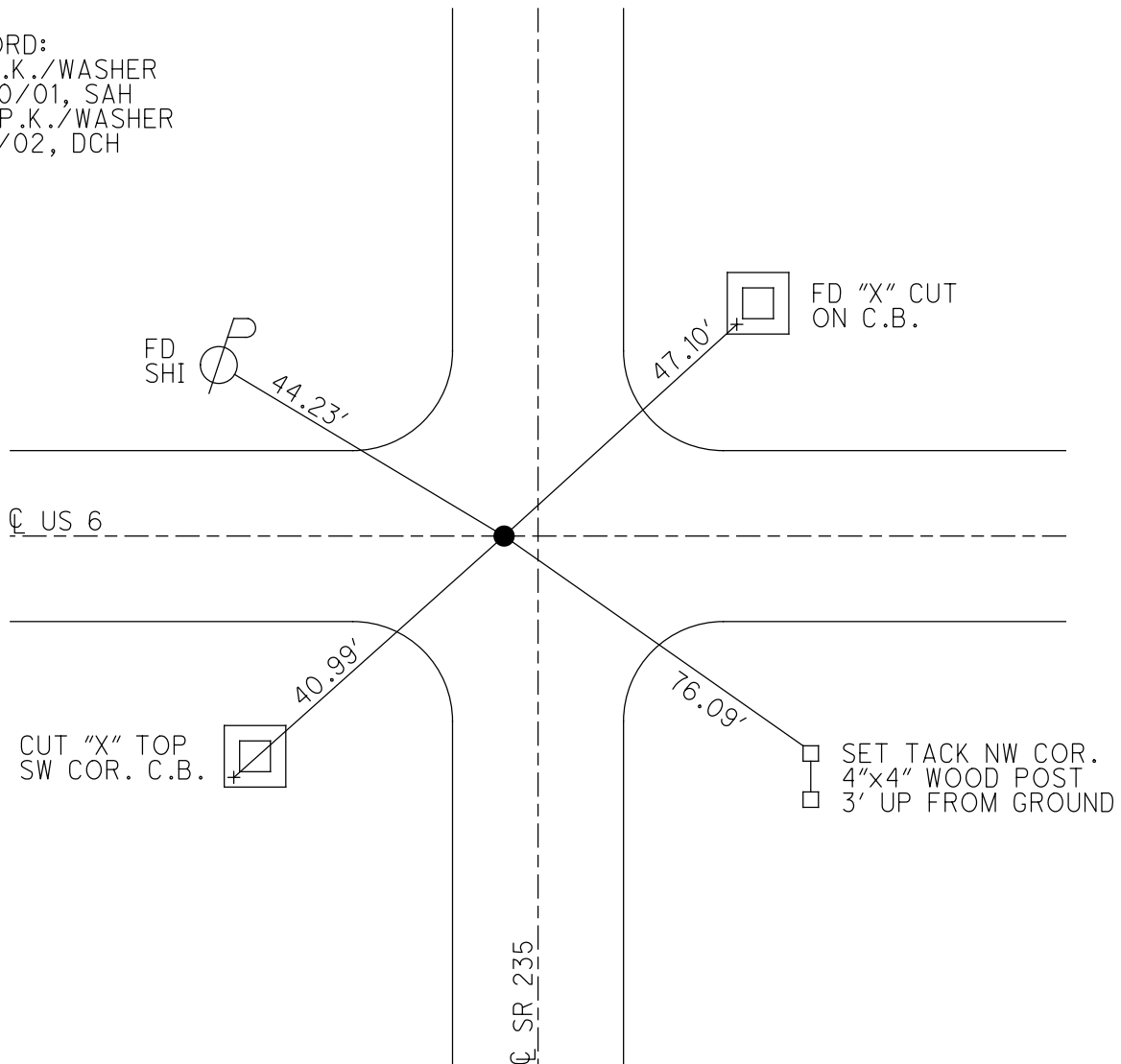
PERSONNEL _____ REFERENCE NO. 11 SHEET 13 OF 22
 NOTES HUSS DATE 10/30/01 ROUTE US 6
 H.C. ROUSOS WEATHER CLOUDY COUNTY WOOD
 R.C. VAN DUSEN TEMP. 57° TOWNSHIP WESTON
 SECTION 25
 DWG BY NIESE PID _____ T 5 N R 9 E

TYPE MONUMENT P.K./WASHER
 ON SURFACE - ~~BELOW~~ ON
 OFFSET ☐ PAVEMENT ON LT : RT
- TO - EDGE PAVEMENT 2.0' W ☐ PAVT. S
 STATION: 266+21



HORZ. DATUM: _____ GEOID: _____
 GRID: NORTHING: _____ EASTING: _____

RECORD:
 FD P.K./WASHER
 10/30/01, SAH
 SET P.K./WASHER
 6/17/02, DCH



O.D.O.T. DISTRICT 2 SURVEY OFFICE

PERSONNEL _____

REFERENCE NO. 11

SHEET 12 OF 12

NOTES Huss

H.C. Rousos

DATE 10-30-01

ROUTE US 6

R.C. Van Dussen

WEATHER Cloudy

COUNTY Wood

TEMP. 57°

TOWNSHIP Weston

SECTION 25

T.S. N R 2 E

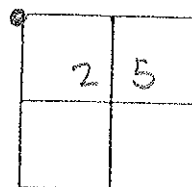
TYPE MONUMENT Pk & Washer

ON SURFACE - BELOW Yes

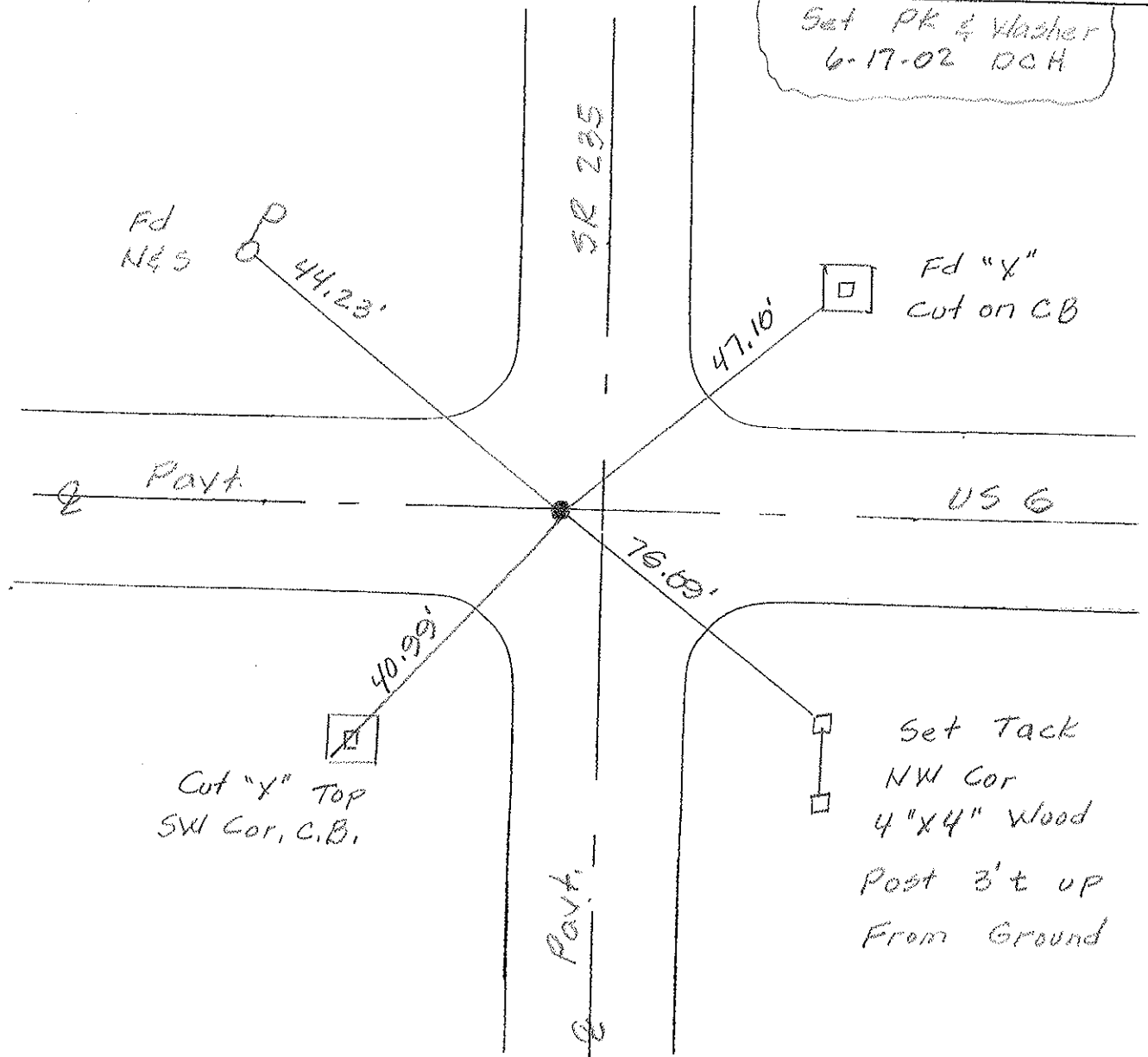
LEFT - ~~C~~ PAV'T. - RIGHT Yes

JO EDGE PAVEMENT 2.0' W & Part 5

S.L.M. 266 + 21



Set Pk & Washer
6-17-02 DCH



O.D.O.T. DISTRICT 2 SURVEY OFFICE

PERSONNEL _____

REFERENCE NO. 11 SHEET _____ OF _____

30 on SR 235

NOTES HOFFMAN

H.C. BARNSIEL

DATE 7-24-90

ROUTE U.S. 6

R.C. LOEHRKE

WEATHER CLEAR

COUNTY WOOD

TEMP. 80°

TOWNSHIP WESTON

SECTION 25

T.S. N.R. 9 E

TYPE MONUMENT P.K. / WASHER

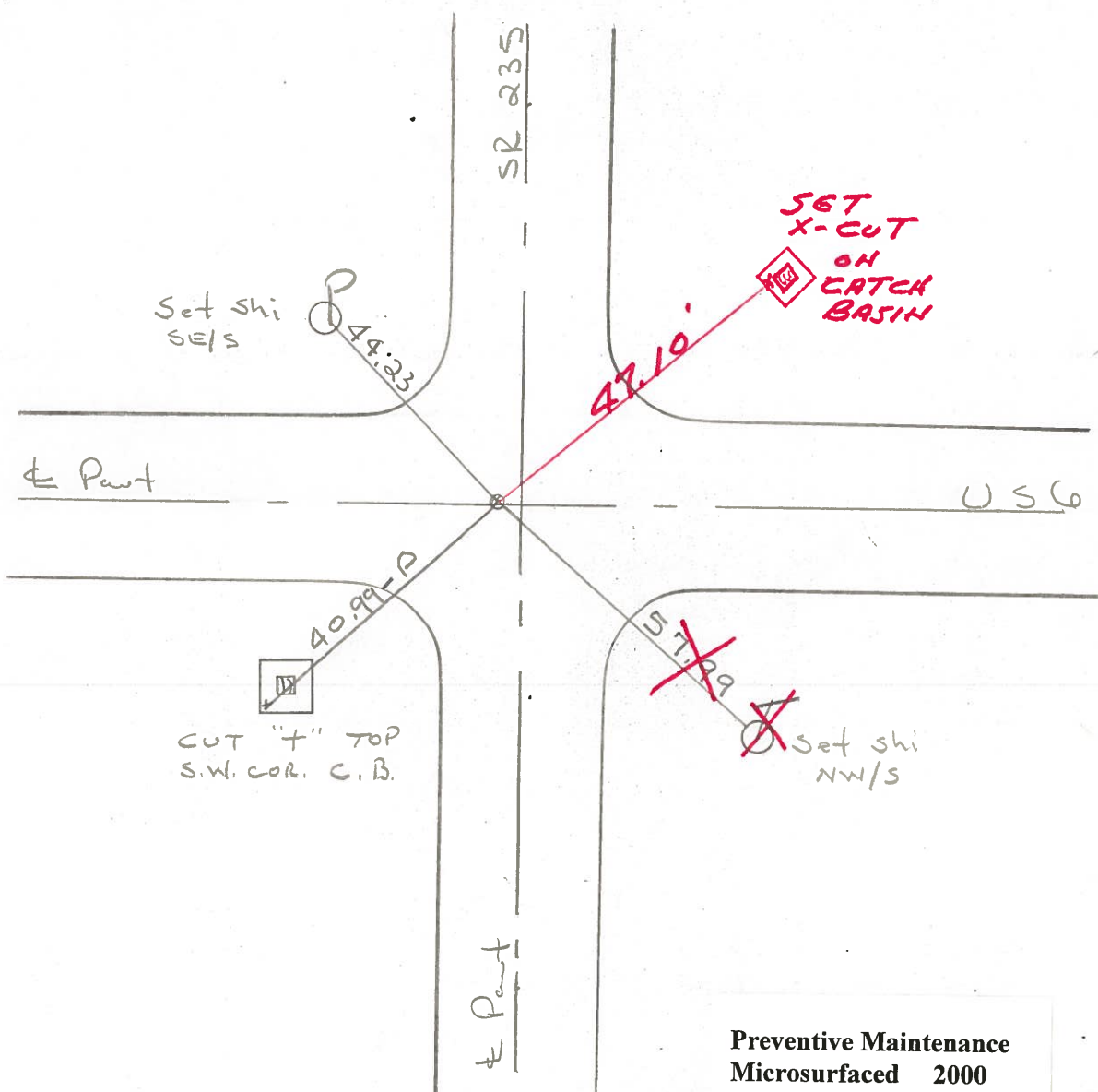
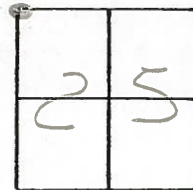
Set
P.K. / washer
8-10-90
swl

ON SURFACE - ~~BELOW~~ YES

~~LEFT - & PAV'T. - RIGHT~~ YES

TO EDGE PAVEMENT 2.0' W. of Pavt S.

S.L.M. 266 + 21



Preventive Maintenance
Microsurfaced 2000
Existing Point Uncovered
Date 4-14-2000

County Wood ^{U.S.} S.R. 6

Date 3-25-83

Township Weston

Weather P. Cloudy

Section NW Cor. Sec. 25

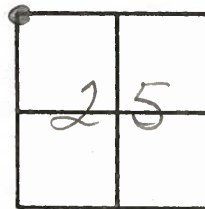
Temp. +35°

T5N, R9E

Personnel Hoffman ✓

Householder ✓

Barnhisel ✓

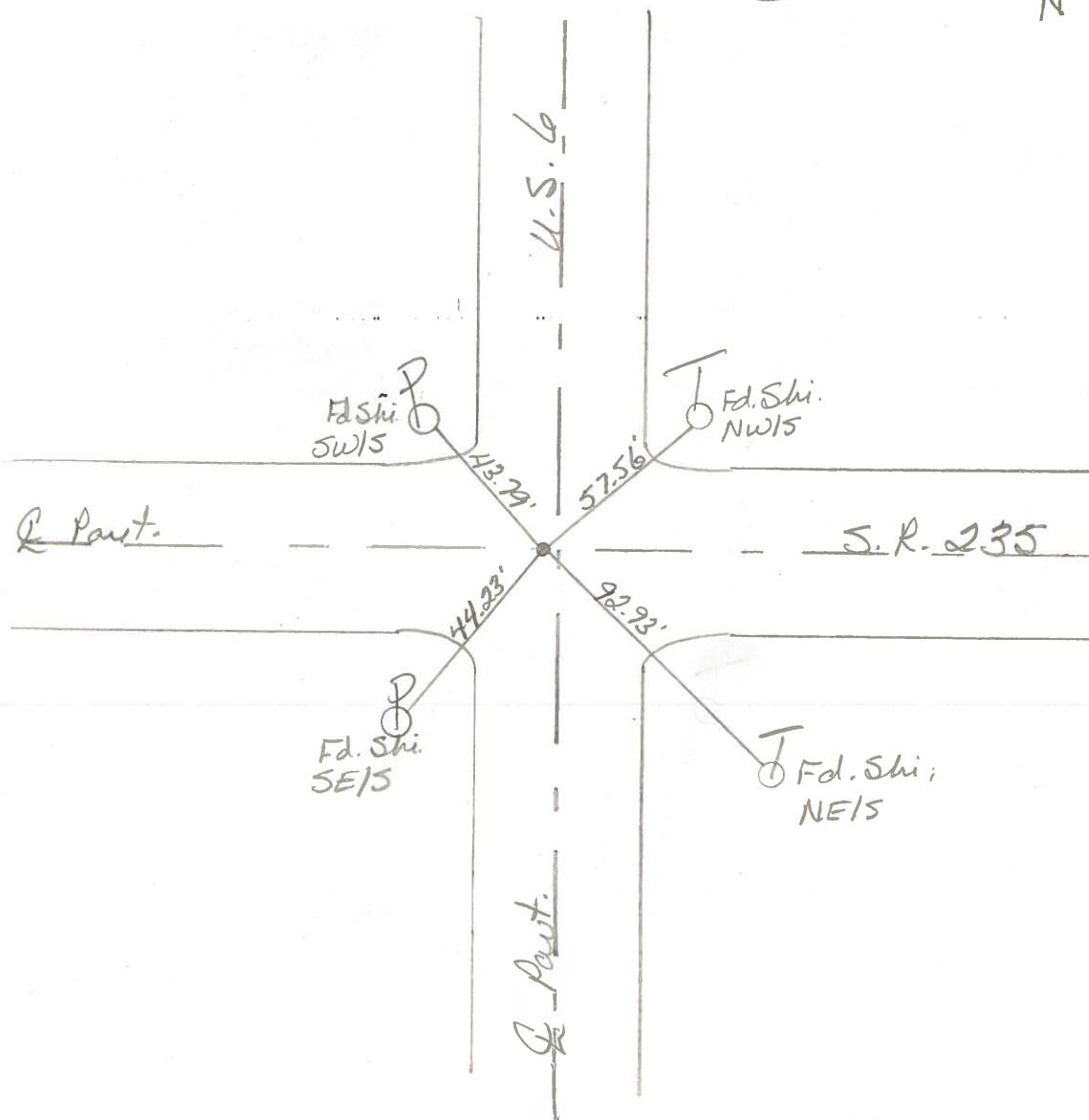


11

Fd. P.K. Nail @ surface
2' west of Q S.R. 235

Sta. 266 + 21

set P.K.
5-28-84
CL



ODOT DISTRICT 2 SURVEY OFFICE

SHEET 11 OF

County Wood ~~SR~~ US6

Township Weston

Section NW Cor. Sec. 25

T5N, R9E

Personnel Smith

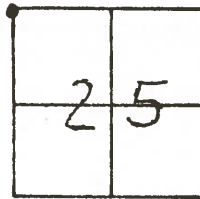
Bowers

Mead

Date 6-18-1980

Weather Clear

Temp. +70°



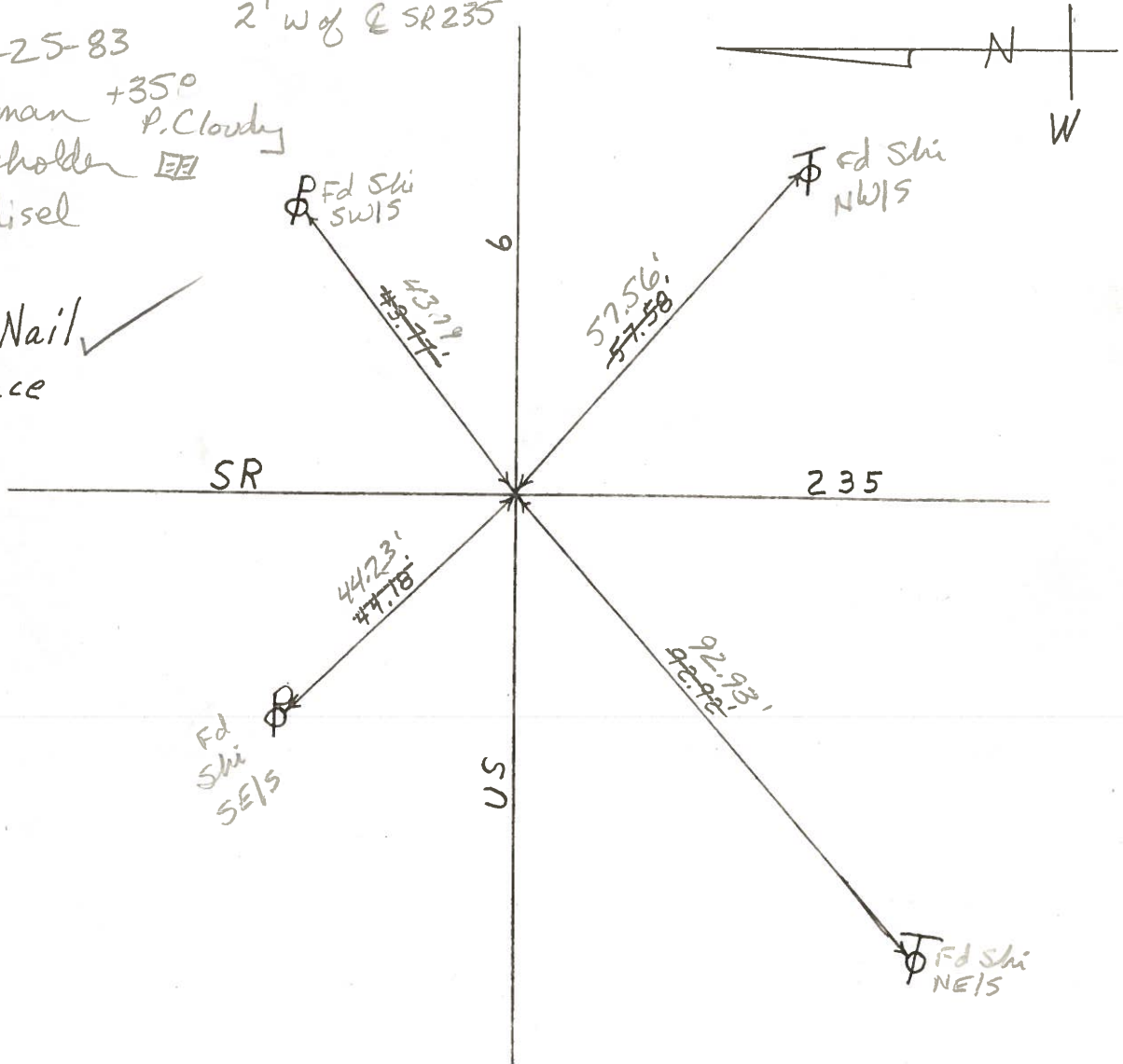
Sta. 266+21

2' W of E SR235

*11 ✓ 3-25-83

Hoffman +35°
Householder P. Cloudy
Barnhisel

Fd. P.K. Nail ✓
@ Surface



County Wood ~~SR~~ US6

Date 6-18-1980

Township Weston

Weather Clear

Section NW Cor. Sec. 25

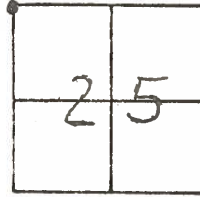
Temp. +70°

T5N, R9E

Personnel Smith

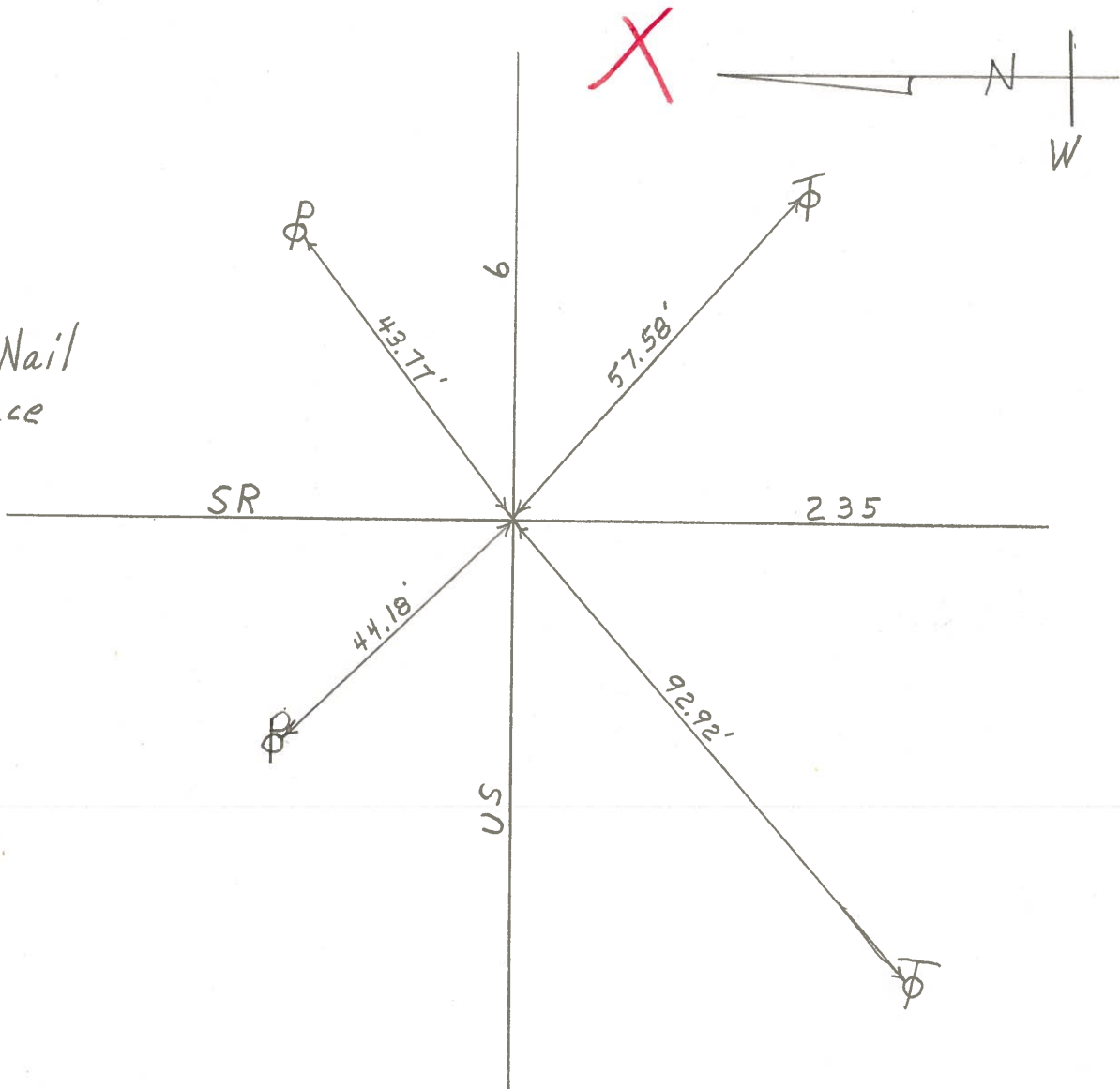
Bowers

Mead



11

Fd. P.K. Nail @ Surface



PERSONNEL TITLE PERSONNEL TITLE

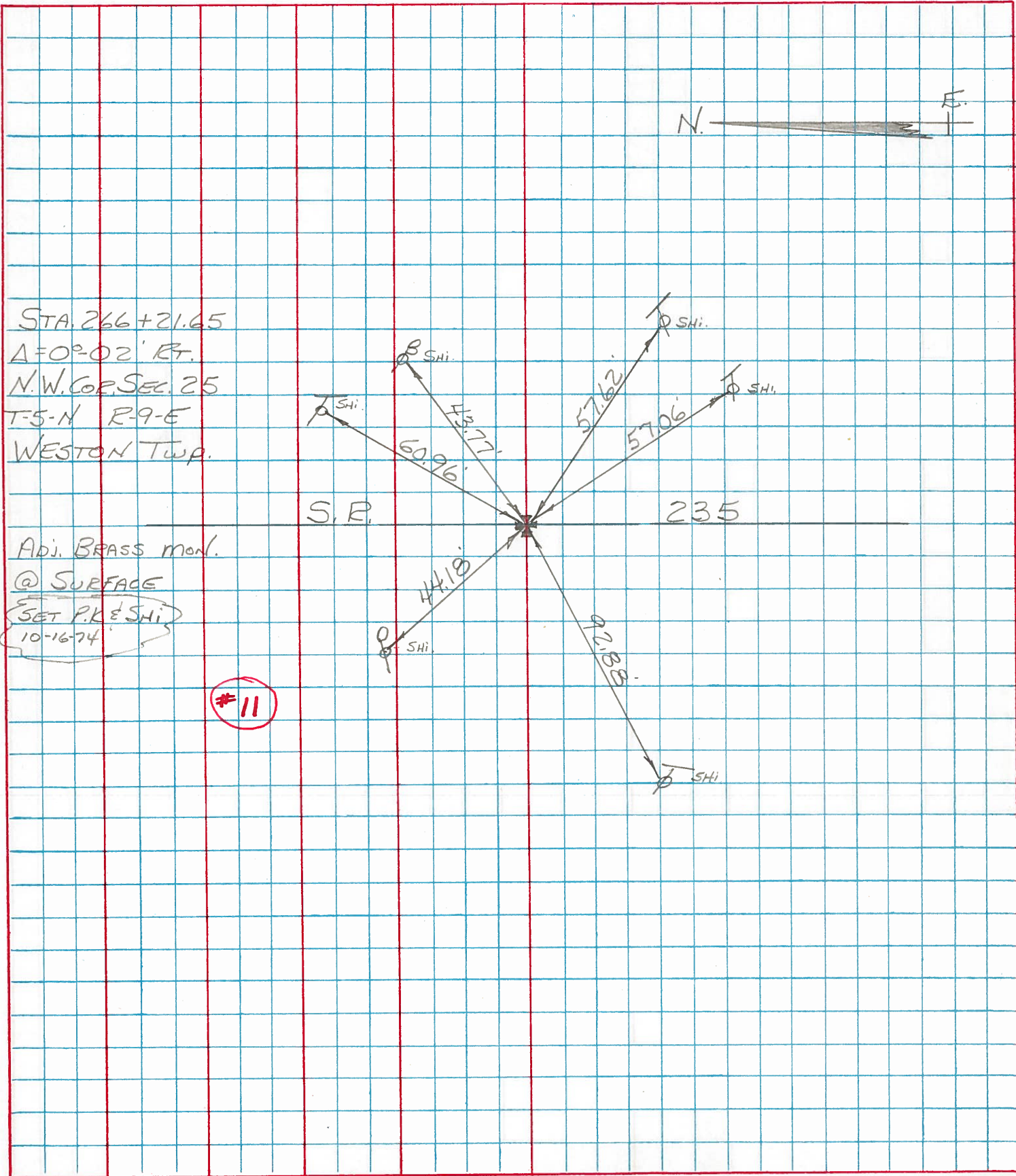
BURNSIDE
SMITH
BOWERS
KIJOWSKI

COUNTY Wood DATE 6-24-74

S. R. U.S. 6 & SR. 235 WEATHER Cloudy

SEC. N.W. COR. SEC. 25 TEMP. +65°

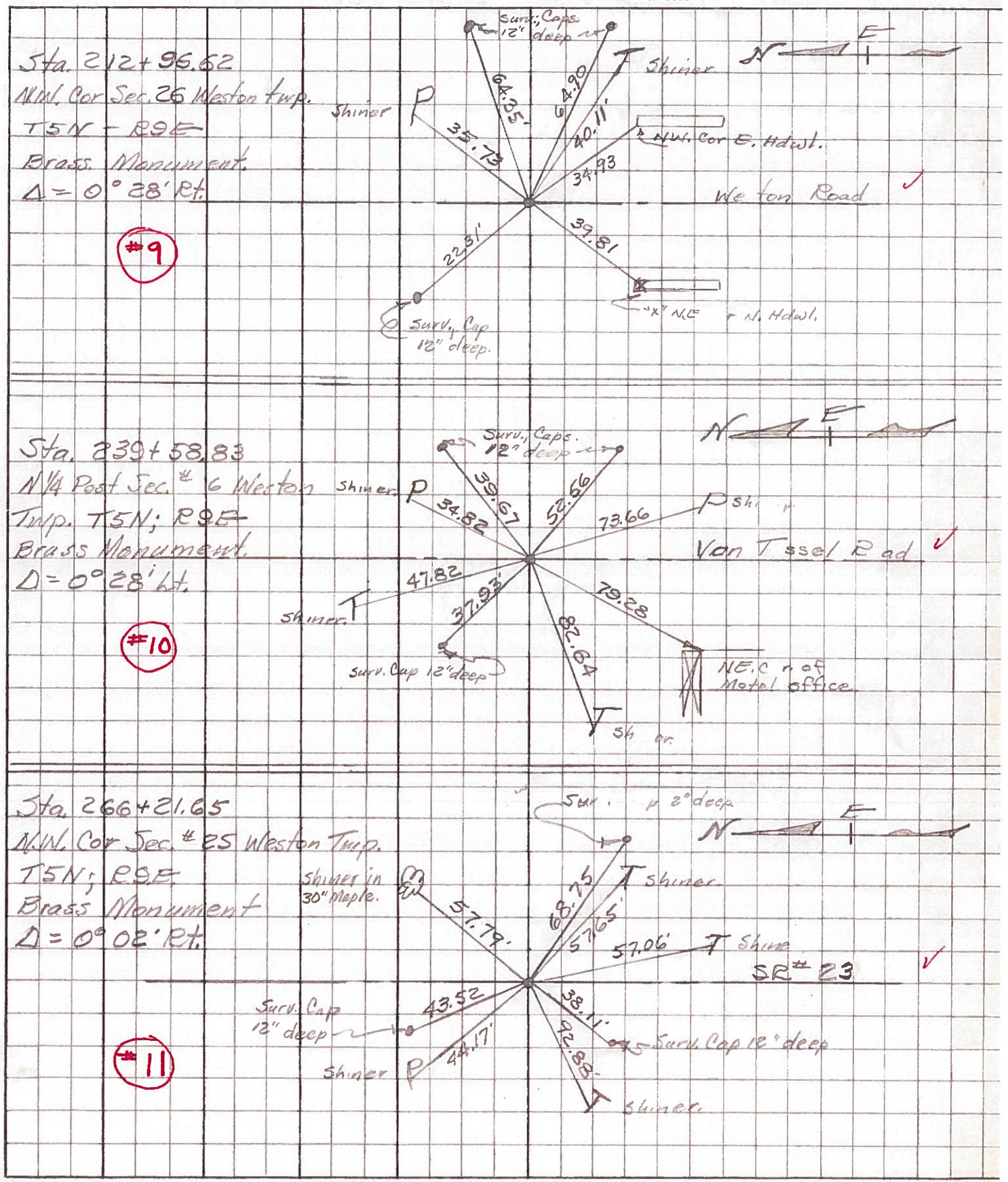
DESCRIPTION CONTROL TIES LEFT CENTER LINE RIGHT JOB NO.



PERSONNEL TITLE PERSONNEL TITLE
 Morrison _____ Smith _____
 Bowers _____ Bu de _____
 Halcombe _____
 Kern _____

COUNTY Woo DATE March 19, 1968
 S. R. U # WEATHER Cloudy
 SEC. _____ TEMP. 0

DESCRIPTION Control Points from 10 JOB NO. _____



PERSONNEL TITLE PERSONNEL TITLE

COUNTY Wood DATE OK 3-24-58

S-R U.S. #6 WEATHER 5-9-62

SEC. TEMP.

DESCRIPTION LEFT CENTER LINE RIGHT JOB NO.

Sta. 186+57.70			✓ N.E. Cor. Bk. house Fdn.	S.W.	59.0
N ⁴ Post Sec. 27 Weston			N.W. " " " "	S.W.	67.05
Twp. T5N-R9E. Fd. iron pin			✓ Shiner in T. Pole	S.	26.85
Δ = 0°-10' Lt.	BRASS Mon.		✓ Shiner in P. Pole	N.	28.07
⑧	#9 ok.				
Sta. 212+96.62		34.93	N.W. Cor. E. Hdwl.	S.E.	34.99 35.31
N.W. Cor. Sec. 26 Weston		39.81	x N.E. " W. "	S.W.	39.75
Twp. T5N-R9E. Fd. RR Spk		35.73	Shiner in P.P.	N.E.	35.89 35.94
Δ = 0°-28' Rt	BRASS Mon.	Gone	U.S. B.M.	N.E.	35.20
Weston Rd.		40.11	Shi. in T. Pole	S.E.	40.15
⑨	#10 ok.				
Sta. 239+58.83		34.82	Shiner in P.P.	N.E.	33.61
N ⁴ Post Sec. 26 Weston			Shiner in T. Pole	N.W.	36.0
Twp. T5N-R9E. Fd. RR Spk		79.28	N.E. Cor. Fdn. Stone	S.W.	79.24
Von Tassel Rd.	BRASS Mon.	73.66	Shiner in P.P.	S.S.E.	73.58 73.61
Δ = 0°-28' Lt.		47.82	" " T.P.	N.W.	47.91 47.8
⑩	#11 ok.	82.64	" " T.P.	N.S.W.	
Sta. 266+21.65			Gone Center of square Conc. mt.	N.W.	40.9
N.W. Cor. Sec. 25 Weston Twp		57.79	Shiner in 24" maple	N.E.	57.72
T5N-R9E. Fd. RR Spike	BRASS Mon.		" " T.P.	S.E.	57.06
Inter. U.S. #6 & S.E. #69		92.88	" " T.P.	W.S.W.	73.23
Δ = 0°-02' Rt. Fwd.		44.17	Shiner in P.P.	N.W.	44.1
⑪	#12 ok.	57.65	Shiner in T.P. S.E.		

S.H. 286

6/15/54, OK

No. 8- ✓ N.W. Cor. Sec. 27 of N.E. Cor. Sec. 28
 Weston Twp. T5N-R9E Sta. 160+17.7
 Fd. R.R. Spike set by Previous Survey
 20' top of E. end of S. Hd. Wall S.W. 26.40,
 X " " " " " " " " MW. 29.49
 Shiner in tel. Pole S.E. 40.70

No. 9- ✓ N 1/4 Post sec 27 Weston Twp.
 T5N-R9E Sta. 186+52.6
 Fd. iron pin
 N.E. Cor. BIK. House fdn. S.W. 58.90
 N.W. " " " S.W. 67.05
 Shiner in T. Pole S 26.78
 " " 10" Box E S.W. 88.15

No. 10- ✓ N.W. Cor. Sec 26 Weston Twp.
 T5N-R9E Sta. 277+191 Fd. R.R. Spike
 N.W. Cor. Fd Wall S.E. 30.65
 X N.E. " W " " S.W. 39.75
 Shiner in R Pole N.E. 33.49
 U.S. B.M. 3520° N.E.
 Weston Rg.

7/28/50, OK

No. 11- ✓ N 1/4 Post Sec. 26 Weston Twp.
 T5N-R9E Sta. 239+53.15
 Fd. R.R. Spike Van Tassel Rd.
 Shiner in P. Pole N.E. 32.42
 " " A. Pole N.W. 35.62
 N.E. Cor. Fdn. Store S.W. 79.24
 Shiner in P. Pole S.S.E. 73.61

No. 12- ✓ N.W. Cor Sec. 25 Weston Twp. ^{inter. U.S. 68} S.R. 69
 T5N-R9E Sta 266+14.25 Fd. R.R. Spike
 Center of square Conc. Mt. N.W. 40.92
 Shiner in P. Pole N.W. 43.95
 " " 24" Maple N.E. 57.82
 " " T. Pole S.E. 57.15
 " " T. " W.S.W. 72.95

No. 13- ✓ N 1/4 Post Sec 25 Weston Twp.
 T5N-R9E Sta. 292+97.80 Conc. Nail
 Shiner in 24" Maple N.W. 45.56
 " " T. Pole N.E. 30.47
 " " P. Pole S.W. 71.90
 " " 24" Maple N.W. 89.70