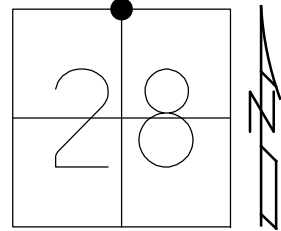


O.D.O.T. DISTRICT 2 SURVEY OFFICE (USE ONLY)

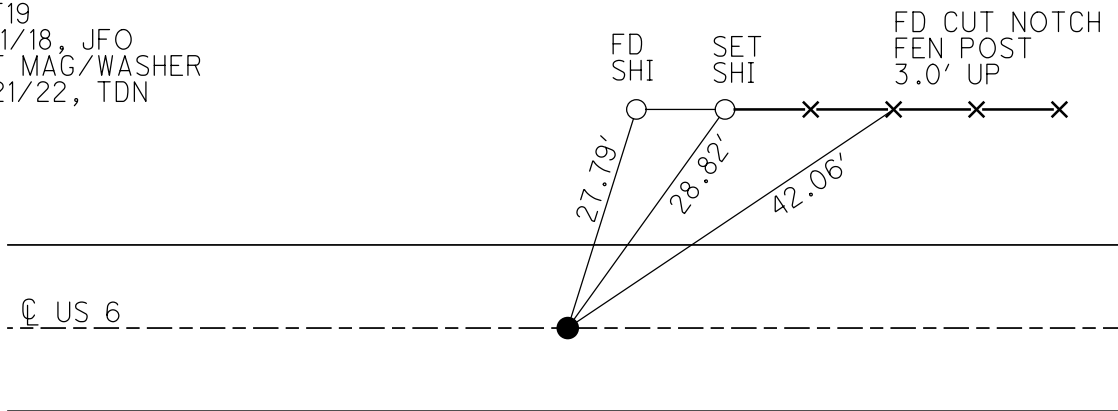
PERSONNEL \_\_\_\_\_ REFERENCE NO. 19 SHEET 22 OF 24  
 NOTES RHOADES DATE 7/21/22 ROUTE US 6  
 H.C. NIESE WEATHER CLEAR COUNTY WOOD  
 R.C. AUBLE TEMP. 80° TOWNSHIP PLAIN  
 \_\_\_\_\_ WHITAKER SECTION 28  
 DWG BY RHOADES PID 95801 T 5 N R 10 E

TYPE MONUMENT MAG/WASHER  
 ON SURFACE - ~~BELOW~~ ON  
 OFFSET 0 PAVEMENT ON LT : RT  
13.3' TO LT EDGE PAVEMENT  
 STATION: 452+99.85



HORZ. DATUM: NAD83 (2011) GEOID: NAVD88 2018  
 GRID: NORTHING: 623659.251 EASTING: 1634110.394

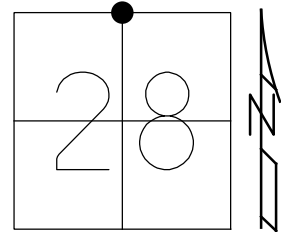
RECORD:  
 FD P.K. NAIL  
 5/26/92, MB  
 SET P.K./WASHER  
 9/22/92, MB  
 FD P.K./WASHER  
 4/14/00  
 FD P.K./WASHER  
 REF19  
 7/11/18, JFO  
 SET MAG/WASHER  
 7/21/22, TDN



O.D.O.T. DISTRICT 2 SURVEY OFFICE (USE ONLY)

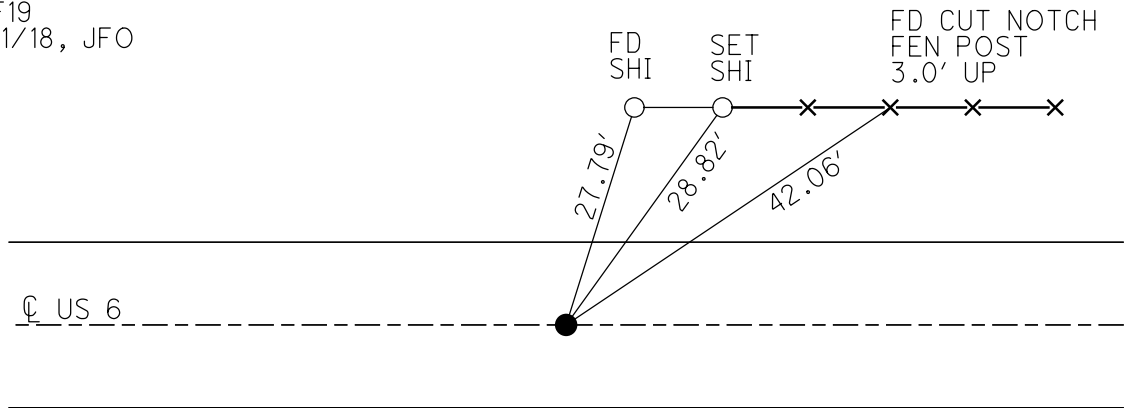
PERSONNEL \_\_\_\_\_ REFERENCE NO. 19 SHEET 22 OF 22  
 NOTES RHOADES DATE 7/11/18 ROUTE US 6  
 H.C. LEU WEATHER SUNNY COUNTY WOOD  
 R.C. HAGEMeyer TEMP. 77° TOWNSHIP PLAIN  
 DWG BY RHOADES PID 95801 SECTION 28  
 T 5 N R 10 E

TYPE MONUMENT P.K./WASHER  
 ON SURFACE - ~~BELOW~~ ON  
 OFFSET  $\text{C}$  PAVEMENT ON LT : RT  
13.3' TO LT EDGE PAVEMENT  
 STATION: 452+99.85



HORIZ.DATUM: NAD83 (2011) GEOID: NAVD88 2012A  
 GRID: NORTHING: 623659.251 EASTING: 1634110.394

RECORD:  
 FD P.K. NAIL  
 5/26/92, MB  
 SET P.K./WASHER  
 9/22/92, MB  
 FD P.K./WASHER  
 4/14/00  
 FD P.K./WASHER  
 REF19  
 7/11/18, JFO



O.D.O.T. DISTRICT 2 SURVEY OFFICE (USE ONLY)

PERSONNEL

REFERENCE NO. 19

SHEET 22 OF 22

NOTES BARNHISEL

DATE 5/26/92

ROUTE US 6

H.C. VAN DUSEN

WEATHER SUNNY

COUNTY WOOD

R.C. BURNETT

TEMP. 50°

TOWNSHIP PLAIN

SECTION 28

DWG BY NIESE PID \_\_\_\_\_

T 5 N R 10 E

TYPE MONUMENT P.K. NAIL

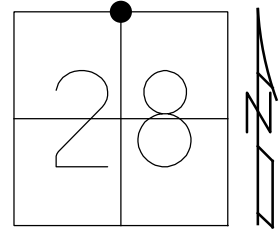
ON SURFACE - ~~BELOW~~ ON

OFFSET Q PAVEMENT ON LT : RT  
13.3' TO LT EDGE PAVEMENT

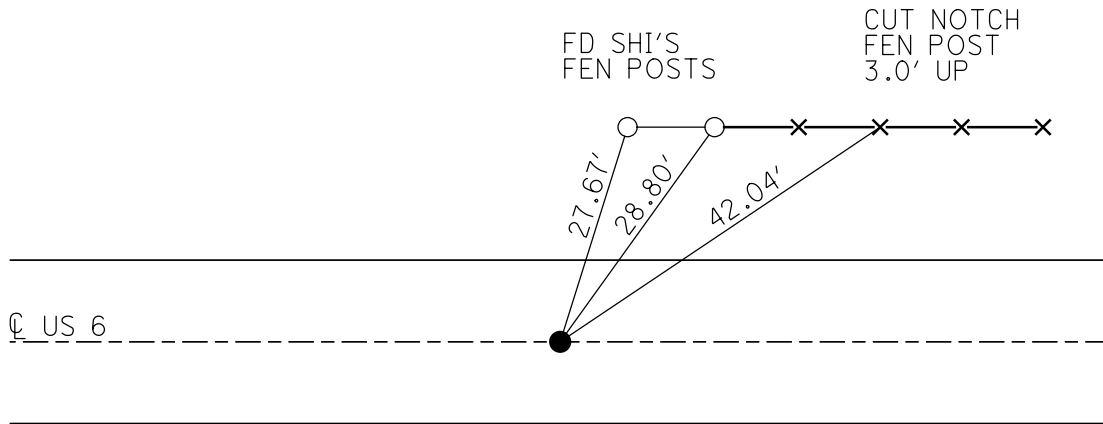
STATION: 453+00

HORZ. DATUM: \_\_\_\_\_ GEOID: \_\_\_\_\_

GRID: NORTHING: \_\_\_\_\_ EASTING: \_\_\_\_\_



RECORD:  
 FD P.K. NAIL  
 5/26/92, MB  
 SET P.K./WASHER  
 9/22/92, MB  
 FD P.K./WASHER  
 4/14/00



# O.D.O.T. DISTRICT 2 SURVEY OFFICE

PERSONNEL \_\_\_\_\_

REFERENCE NO. 19

SHEET 8 OF 8

NOTES BARNHISEL

H.C. VAN DUSEN

R.C. BURNETT

DATE 5-26-92

WEATHER SUNNY

TEMP. +50°

ROUTE U.S. 6

COUNTY WOOD

TOWNSHIP PLAIN

SECTION 28

T. 5 N R. 10 E

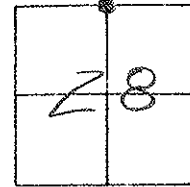
TYPE MONUMENT P.K. NAIL

ON SURFACE - ~~BELOW~~ YES

~~LEFT~~ - E PAV'T. - ~~RIGHT~~ YES

13.3 TO LT EDGE PAVEMENT

S.L.M. 453+00

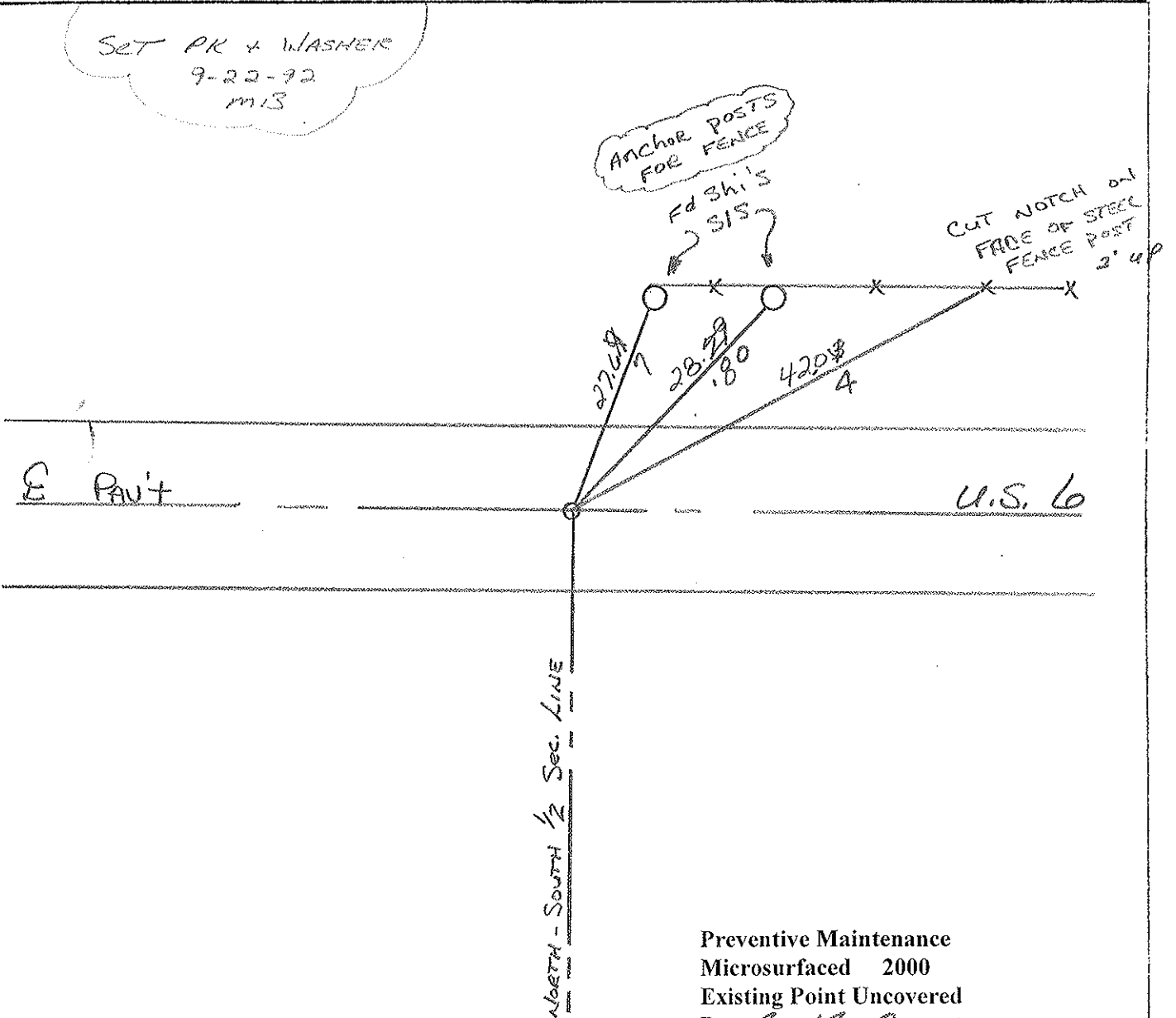


SET PK & WASHER  
 9-22-92  
 MIS

Anchor Posts  
 FOR FENCE

Fd Shi's  
SIS?

CUT NOTCH ON  
FACE OF STEEL  
FENCE POST  
2' 40"



Preventive Maintenance  
 Microsurfaced 2000  
 Existing Point Uncovered  
 Date 4-14-2000

County Wood ~~SR~~ US6

Township Plain

Section N<sup>1</sup>/<sub>4</sub> Cor Sec. 28

T5N, R10E

Personnel Smith

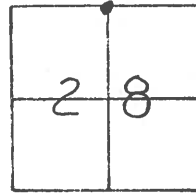
Bowers

Mead

Date 6-18-1980 (OK-8-27-80)

Weather Clear

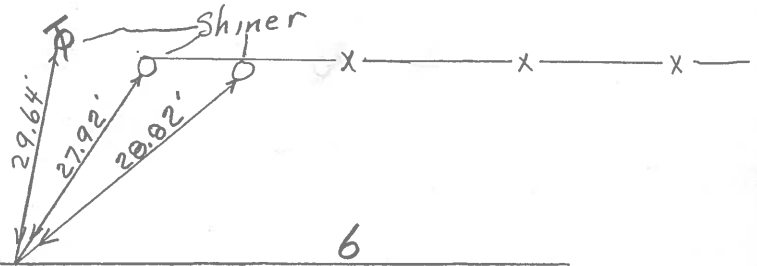
Temp. + 70°



#19

Fd. P.K. Nail  
@ Surface

E US



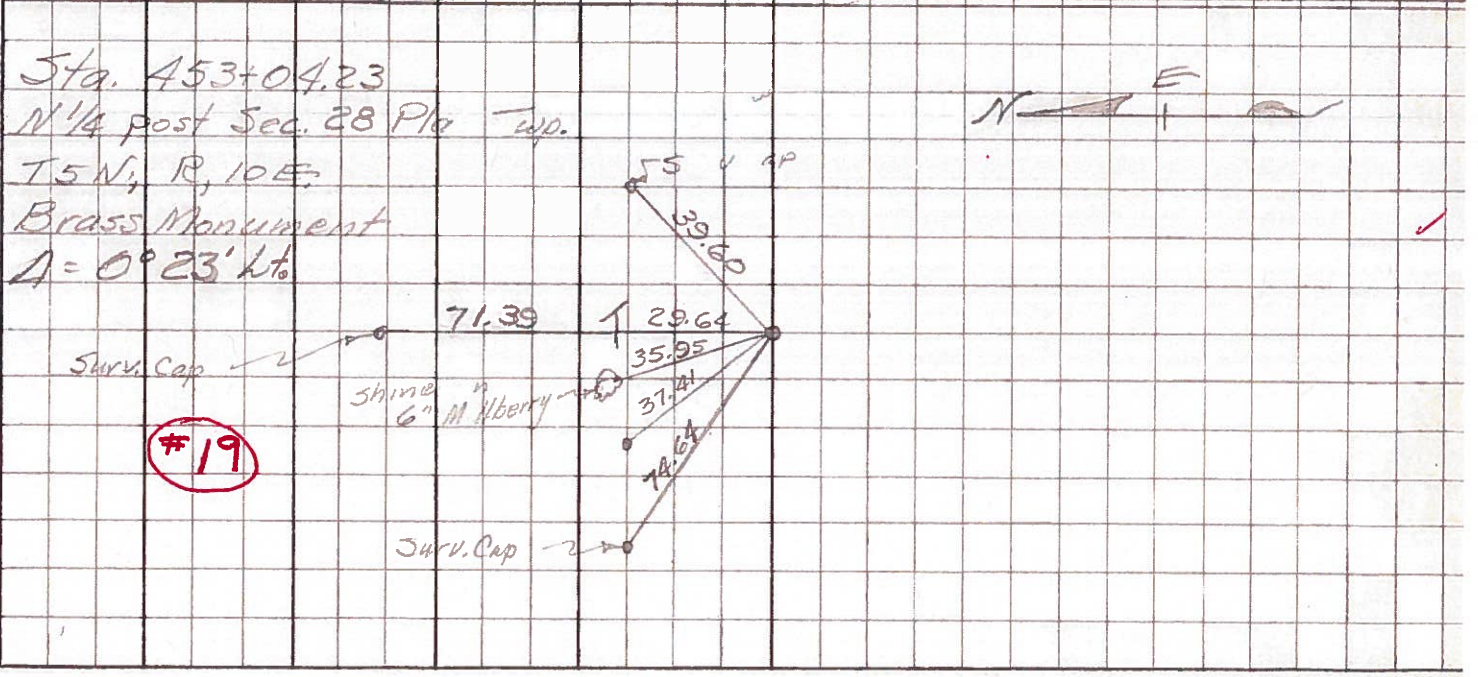
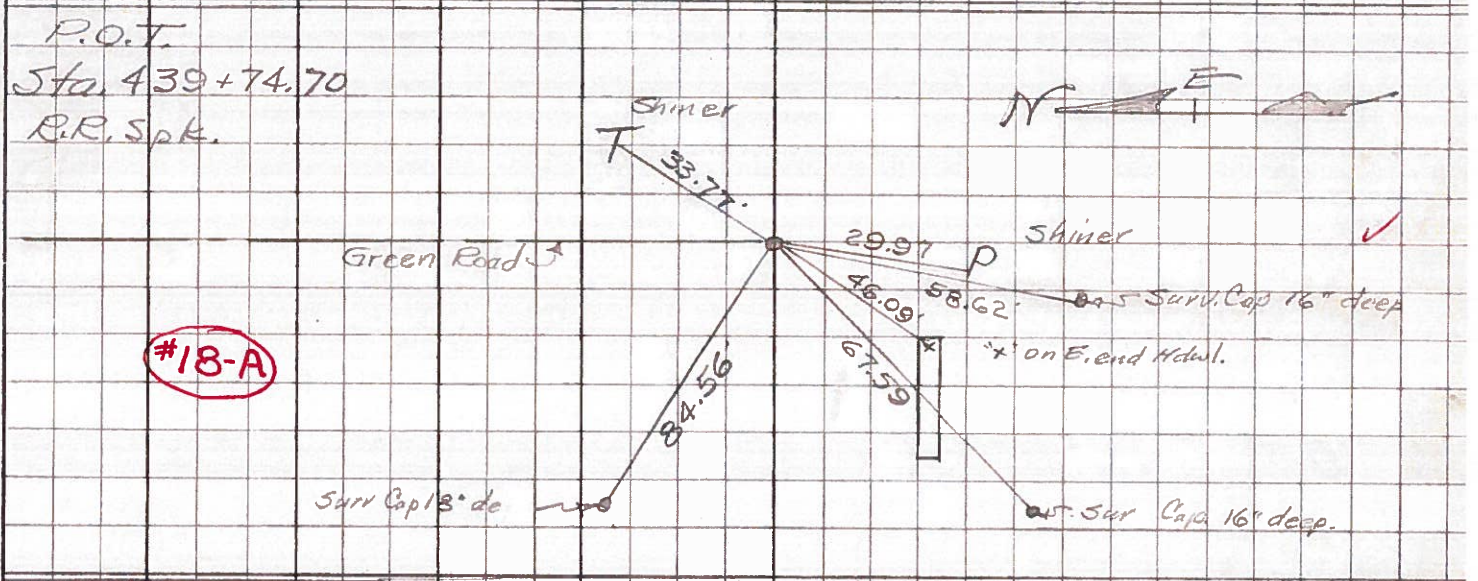
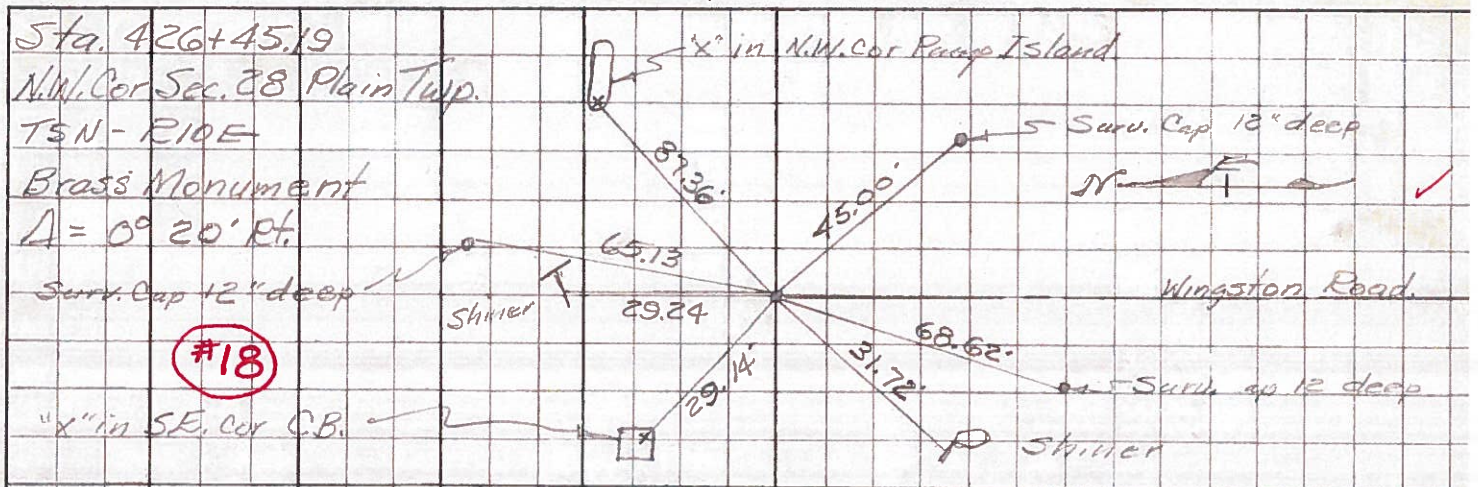
North-South 1/2 Sec. line Sec. 28



PERSONNEL TITLE PERSONNEL TITLE  
 Morrison \_\_\_\_\_ Salvester \_\_\_\_\_  
 Holcombe \_\_\_\_\_ Smith \_\_\_\_\_  
 Kern \_\_\_\_\_ Burnside \_\_\_\_\_

COUNTY Wood DATE March 29, 196  
 S. R. 45#6 WEATHER Cloudy  
 SEC. \_\_\_\_\_ TEMP. +50°

DESCRIPTION Control points Henry Co. line East JOB NO. \_\_\_\_\_





PERSONNEL TITLE PERSONNEL TITLE

COUNTY Wood

DATE OK 3-24-58

S.P.R. U.S. #6

WEATHER 5-9-62  
5-14-70

SEC. TEMP.

DESCRIPTION LEFT CENTER LINE RIGHT JOB NO.

Sta. 453+04.23 3' 20" 68 35.95 N.W. to Shi. in 6" Mullberry 36.19'  
 ✓ N. to shiner in ~~ok~~ T.P. ~~Post~~ 29.64'  
 ✓ N. 4 post - Sec. 28 - Plain N.W. to center of I. post 37.85'  
 Top TEN-R 1/2 E. E.R. Spike ✓ N. to " " " " 42.46'  
 Δ = 0°-23' Lt. BRASS Mon. ✓ N.W. to I. pin 6' SE of first I post 37.41'  
 74.64 N.N.W. to " " " " fourth " " 74.59  
 S.E. to power pole 77.64

#19 ok.

Liberty H1 Road.  
 Sta. 479+87.20 23.32 x in top of curb S. Br. East S.E.  
 ✓ N.W. Cor. Sec. 27. Plain Tup. ✓ N.W. Cor. S. Curb rail S.E. 23.04'  
 ✓ S.W. " N. " " N.E. 21.65'  
 TEN-R 1/2 E Brass Mon. 43.30 Shiner in P.P. S.W. 43.27  
 Δ = 0°-32' Lt Fwd. 76.60 " " T.P. W.N.W. 76.45  
 22.10 Skt. Cor br. Curb N. Rail N.E.

#20 ok.

Sta. 506+40.30 ✓ W.N.W. to shiner in T.P. 84.79'  
 N 4 post sec. 27 Plain Tup 61.88 S.E. " " " P.P. 61.90'  
 TEN-R 1/2 E Brass Mon. Gone. N.E. " " " 6" oak 74.05'  
 Δ = 1°-20' Rt. 65.44 N.E. " " " T.P. 65.40'  
 73.50 Gone. N.E. " " " 16" Gt lpa 89.67'  
 NE " " " 16" Maple.

#21 ok.

P.O.T.  
 Sta. 512+00 Point Gone 11/25 No Good 2' 21" 68  
 Set P.K. nail N.E. to Shi. in T. Pole 41.03'  
 N.W. to Shi. in 28" Maple 64.00'  
 S.W. to Shi. in 10" Catalpa. 67.31'

# 21-A ok.