

O.D.O.T. DISTRICT 2 SURVEY OFFICE (USE ONLY)

PERSONNEL

REFERENCE NO. 19 A

SHEET 24 OF 24

NOTES RHOADES

DATE 8/27/20

ROUTE US 6

H.C. AUBLE

WEATHER SUNNY

COUNTY WOOD

R.C. RHOADES

TEMP. 82°

TOWNSHIP PLAIN

DWG BY RHOADES PID 95801

SECTION 36

T 5 N R 10 E

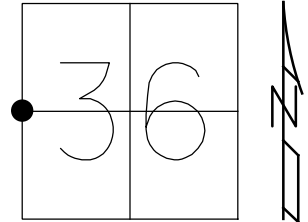
TYPE MONUMENT MONBOX W/1" IPIN

ON SURFACE - ~~BELOW~~ ON

OFFSET \odot PAVEMENT 41.5' ~~RT~~ : RT

-RT TO RT EDGE PAVEMENT

STATION: 617+52.97



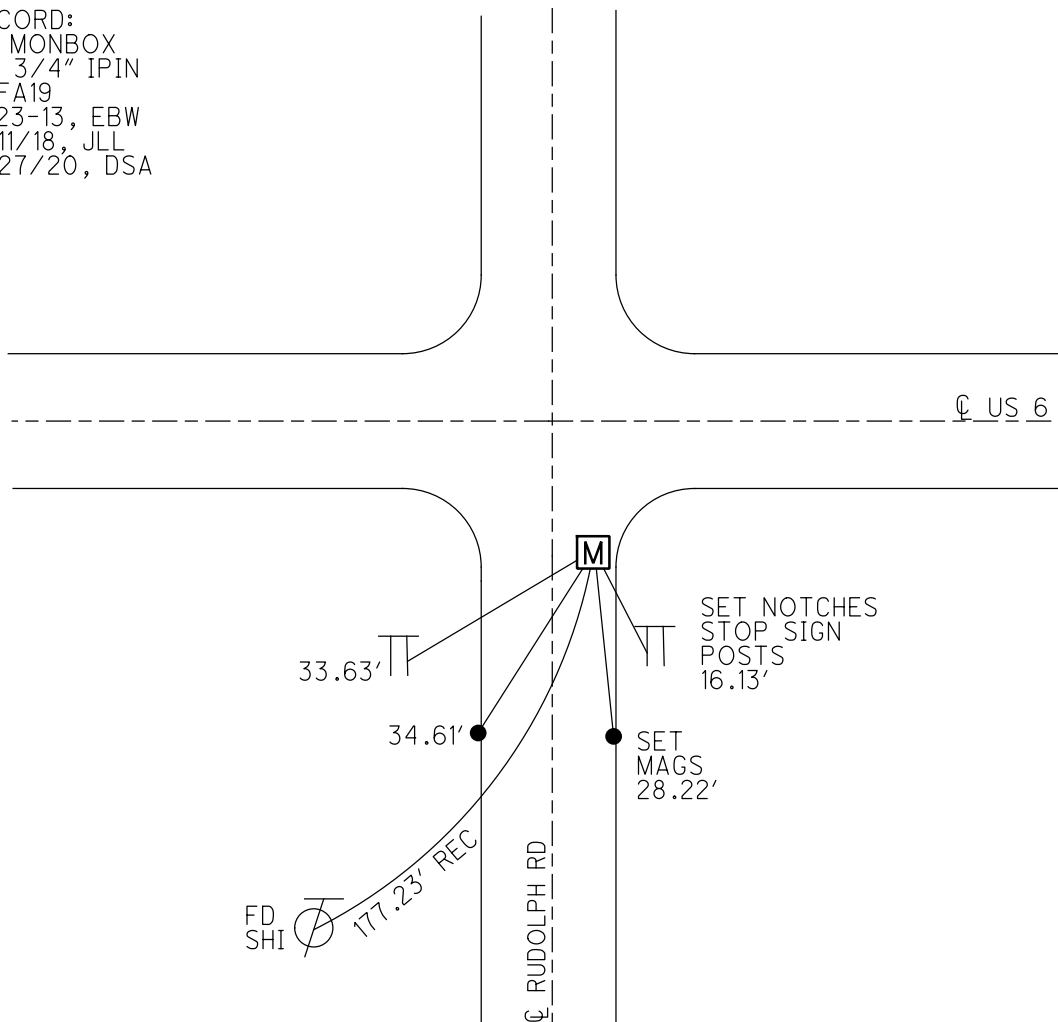
HORIZ.DATUM: NAD83 2011

GEOID: NAVD88 2012A

GRID: NORTHING: 615196.013

EASTING: 1647307.751

RECORD:
FD MONBOX
W/ 3/4" IPIN
REFA19
8-23-13, EBW
7/11/18, JLL
8/27/20, DSA



O.D.O.T. DISTRICT 2 SURVEY OFFICE (USE ONLY)

PERSONNEL _____ REFERENCE NO. 19 A SHEET 1 OF 22
 NOTES WESTFALL DATE 8-23-13 ROUTE US 6
 H.C. _____ WEATHER SUNNY COUNTY WOOD
 R.C. _____ TEMP. 75°F TOWNSHIP PLAIN
 _____ SECTION 36
 _____ T 5 N R 10 E

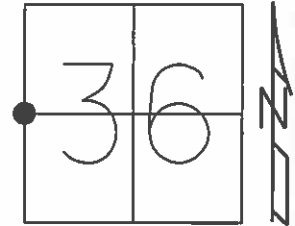
TYPE MONUMENT MON BOX W/ 3/4" IPIN

ON SURFACE - ~~BELOW~~ ON _____

~~LEFT~~ - ☉ PAV'T - RIGHT 41.5', 7.9' RT ☉ RUDOLPH RD
 - TO - EDGE PAVEMENT

S.L.M. 617+76 US 6, 50+00.00 ☉ RUDOLPH RD

Grid: Northing: 615196.0134 Easting: 1647307.751



RECORD:
 GPS, REFA19
 8-23-13

