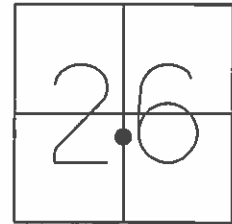


O.D.O.T. DISTRICT 2 SURVEY OFFICE (USE ONLY)

PERSONNEL _____ REFERENCE NO. 20 SHEET 5 OF 22

NOTES O'DONNELL DATE 5-26-15 ROUTE US 6
 H.C. LEU WEATHER CLOUDY COUNTY WOOD
 R.C. RHOADES TEMP. 70°F TOWNSHIP CENTER
 SECTION 26
T 5 N R 11 E

TYPE MONUMENT LG. RR. SPIKE
 ON SURFACE - ~~BELOW~~ ON _____
 LEFT - ☉ PAV'T - ~~RIGHT~~ 3.8'
8.8' TO LT EDGE PAVEMENT
 S.L.M. 923+31.89



Grid: Northing: 619485.3495 Easting: 1676909.015

RECORD:
 STA 223+50.50
 $\Delta = 0^\circ 46'$ RT
 SET SM.RR. SPK.
 ATOP I PIN
 IN MON BOX
 NOTE: STATION TAKEN FROM
 BY-PASS PLANS, 1987

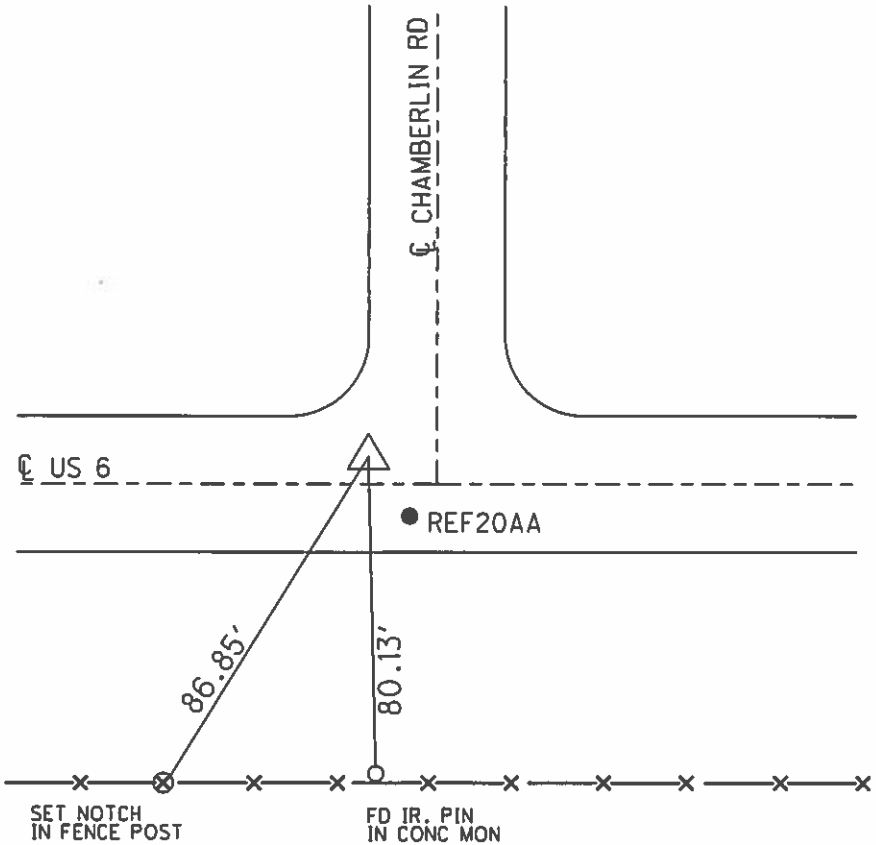
NOTE: DIST. REF 20-REF 20AA = 11.23'

SET PK/WASHER
 12-02-97, SAH

GPS, REFA20
 8-26-13

FD RR SPIKE
 0.2' DOWN
 GPS, REF20
 5-26-15, JLL

SET MAG/WASHER
 GPS, NEWREF20
 10-6-16, JLL



O.D.O.T. DISTRICT 2 SURVEY OFFICE

PERSONNEL

REFERENCE NO. 20

SHEET 1 OF 15

NOTES S. HUSS

H.C. B. VANDUSEN

R.C. B. CORDES

A C. COX

DATE 6-18-97

WEATHER Cloudy-

TEMP. +70°F

ROUTE U.S. 6

COUNTY WOOD

TOWNSHIP CENTER

SECTION 26

T5 N R 11 E

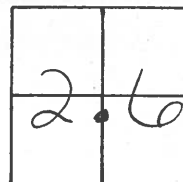
TYPE MONUMENT PT "A" & "B" - Lg. RR. Spike

ON SURFACE - BELOW ON

LEFT- & PAV'T. - RIGHT PTA = 3.8 LT. PTB = 5.1 RT

- TO - EDGE PAVEMENT PT.A = 8.8' TO LEFT EDGE

S.L. PT.A = 28+180 PT.B = 28+181.00



Record PT. A. (1987)

STA. 223+50.50

$\Delta = 0^\circ - 46'$ RT.

SET SM RR. SPIKE OVER
I. PIN IN MON. BOX

NOTE !! STATION TAKEN
FROM BY-PASS PLANS

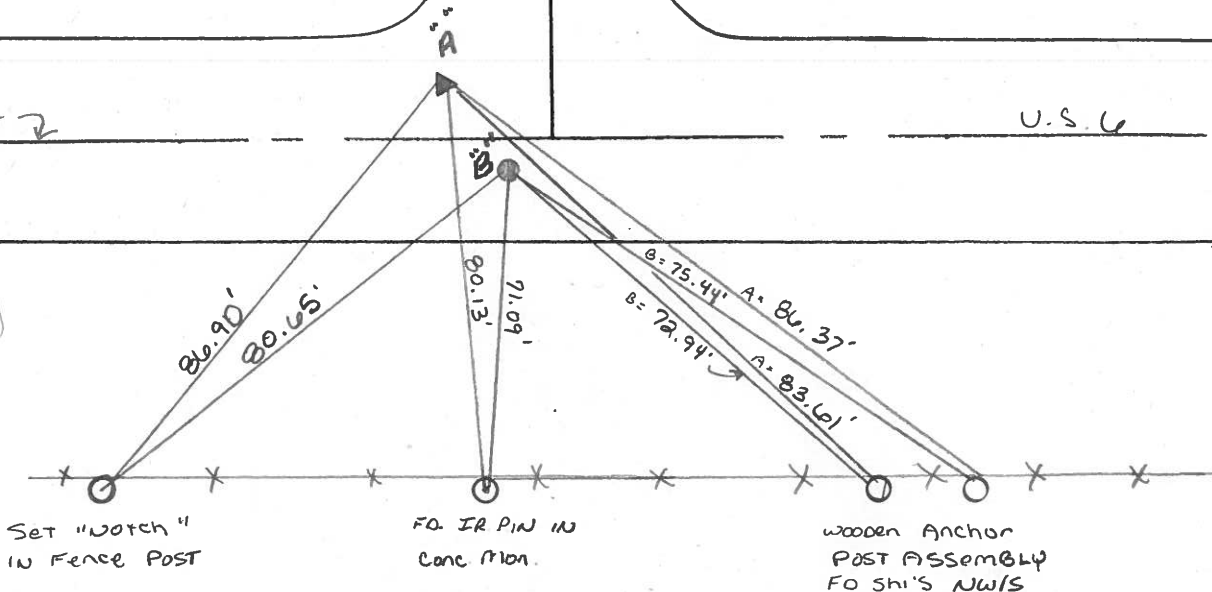
Set PK WASHERS
12-02-97
SAH

Chamberlain Rd

& PAV'T

& PAV'T

U.S. 6



Resurfaced 1997

O.D.O.T. DISTRICT 2 SURVEY OFFICE

PERSONNEL

REFERENCE NO. 20 SHEET OF

NOTES BARNHISEL

H.C. SOCKMAN

R.C. Loehke

Luce

DATE MAY 6, 1987

WEATHER SUNNY

TEMP. +60°

ROUTE U.S. 6

COUNTY WOOD

TOWNSHIP CENTER

SECTION 26

T. 5 N R. 11 E

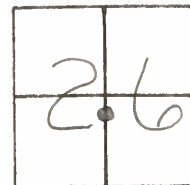
TYPE MONUMENT Pt. 'A' + Pt. 'B' Lg RR Spk

ON SURFACE - BELOW yes

LEFT- & PAV'T. - RIGHT Pt. A - 3' Lt & Pt. B - 4.7 Rt &

Pt. A 14.0
Pt. B 4.9 TO RT EDGE PAVEMENT

S.L.M. Pt-A 925+06 Pt-B 925+13



Record

STA. 223+50.50

$\Delta = 0^\circ - 46'$ Rt

Set RR SPK OVER
IRON PIN IN MON BOX

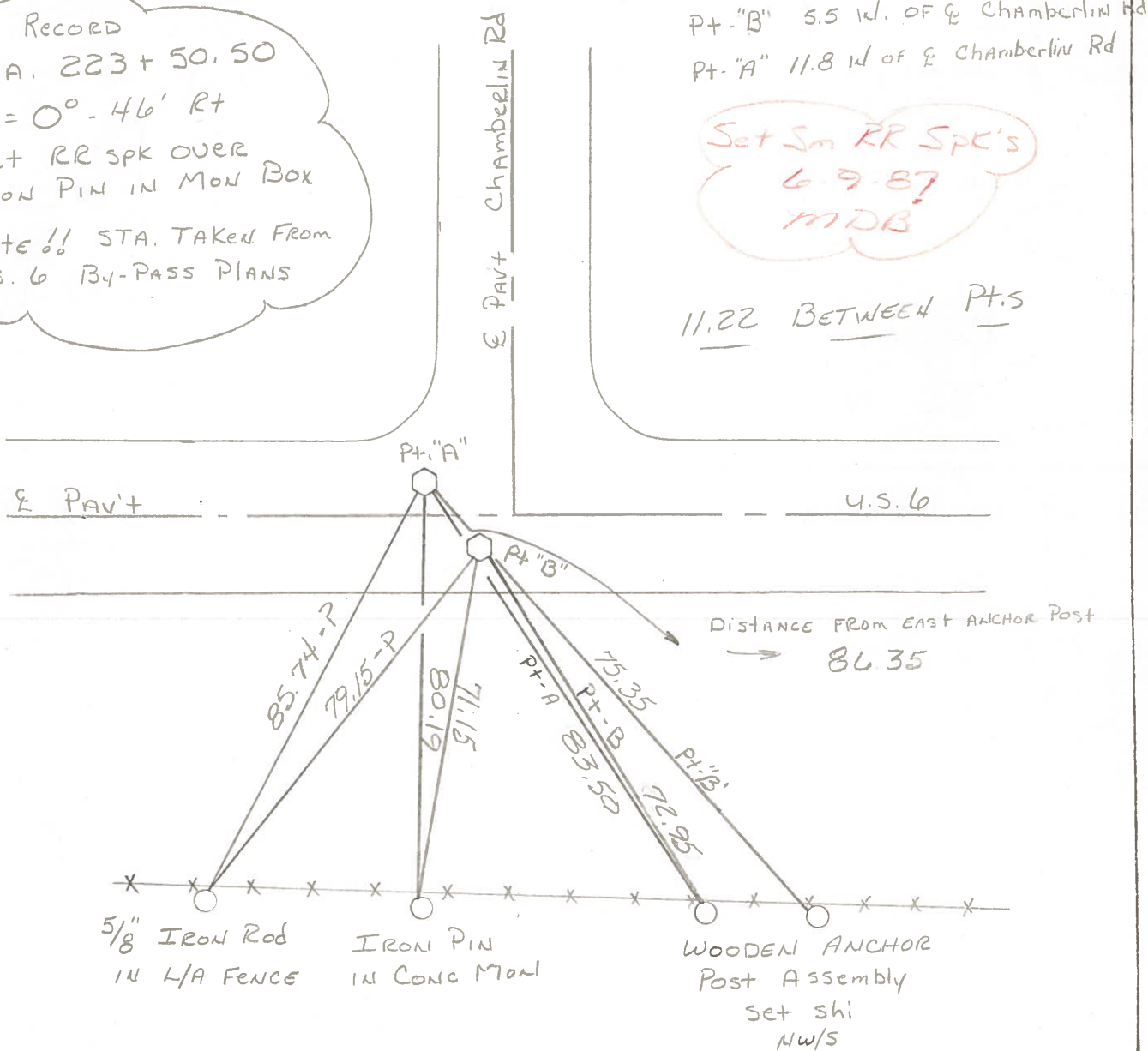
Note!! STA. TAKEN FROM
U.S. 6 BY-PASS PLANS

Pt. "B" 5.5 W. OF & Chamberlin Rd

Pt. "A" 11.8 W. OF & Chamberlin Rd

Set Sm RR Spk's
6-9-87
MDB

11.22 BETWEEN Pt.s



5/8" IRON ROD
IN L/A FENCE

IRON PIN
IN CONC MON

WOODEN ANCHOR
Post Assembly
set shi
NW/S

County WOOD ^{U.S.} S.R. 6

Date 6-8-71

Township CENTER

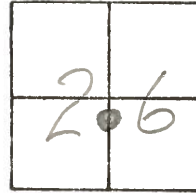
Weather CLOUDY

Section 6

Temp. 68°

T5N, R11E

Personnel BURNSIDE
SMITH
BOWERS
HOLCOMBE
ROCCINI



#20

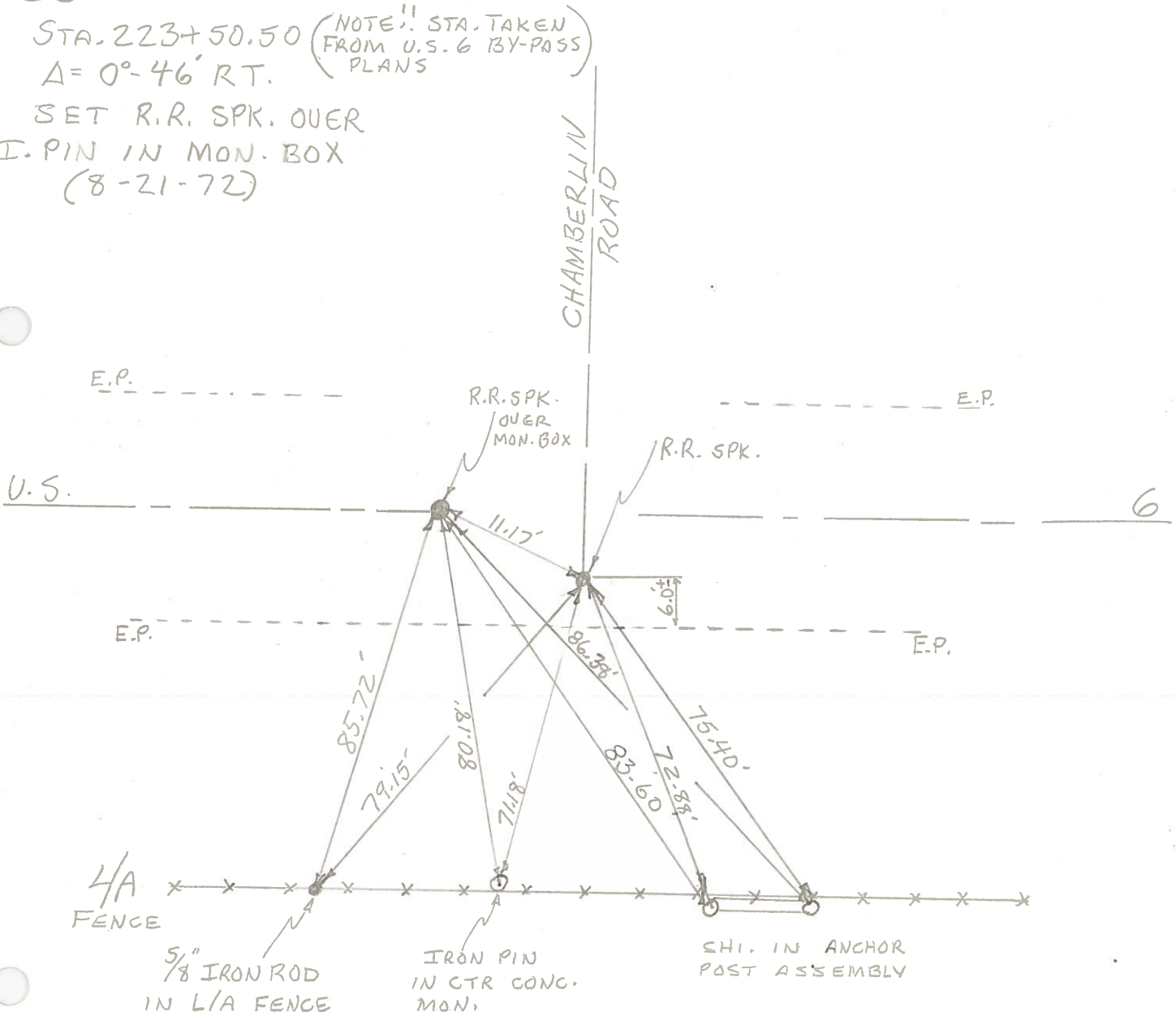
STA. 223+50.50 (NOTE!! STA. TAKEN FROM U.S. 6 BY-PASS PLANS)

$\Delta = 0^\circ - 46' \text{ RT.}$

SET R.R. SPK. OVER

I. PIN IN MON. BOX

(8-21-72)



PERSONNEL	TITLE	PERSONNEL	TITLE	COUNTY	DATE
BURNSIDE		Rocchini		Wood	6-8-71
SMITH				U.S. 6	WEATHER Cloudy
BOWERS				SEC.	TEMP. +68°
HOLCOMBE					

DESCRIPTION BEGIN POINT CHECK - EAST TO CASKIE RD. JOB NO.

LEFT CENTER LINE RIGHT



COPIED

#20

20 AA

SET R.R. Spk OVER I. PIN IN MON. BOX 8-21-72

E.P. U.S. 6

E.P.

R.R. Spk.

CHAMBERLIN ROAD

SHI. IN ANCHOR POST ASSEMBLY

R.R. Spk.

MON. BOX

IRON PIN IN CTR. CONC. MONUMENT

5/8" IRON ROD IN L/A FENCE

(No Top) IRON PIN IN MON BOX STA.=223+50.50 Δ=0°-46' RT.

NOTE: STA. TAKEN FROM U.S. 6 BOWLING GREEN BY-PASS PLAN

E.P.

E.P.

K -16-72