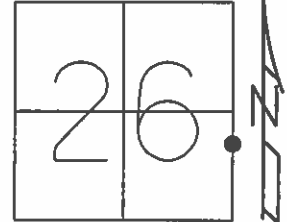


O.D.O.T. DISTRICT 2 SURVEY OFFICE (USE ONLY)

PERSONNEL _____ REFERENCE NO. 21 SHEET 8 OF 22
 NOTES RHOADES DATE 5-29-15 ROUTE US 6
 H.C. O'DONNELL WEATHER CLOUDY COUNTY WOOD
 R.C. LEU TEMP. 67°F TOWNSHIP CENTER
 SECTION 26
 T 5 N R 11 E

TYPE MONUMENT PK/WASHER
 ON SURFACE - ~~BELOW~~ ON _____
 LEFT - Q PAV'T - ~~RIGHT~~ 0.7'
11.5' TO LT EDGE PAVEMENT
 S.L.M. 949+71.27



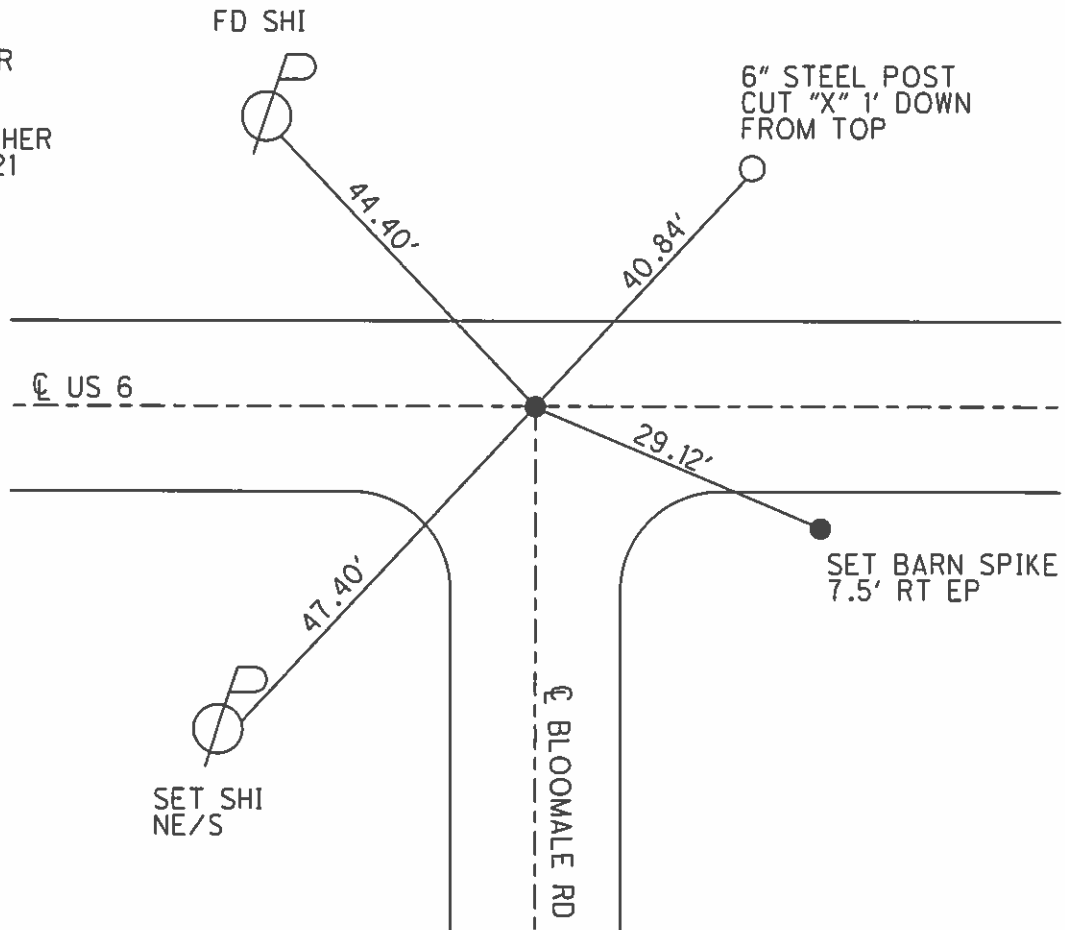
Grid: Northing: 619393.26 Easting: 1679546.709

RECORD:
 SET PK/WASHER
 12-2-97, SAH

GPS, REF21
 8-27-13

FD PK/WASHER
 5-29-15

SET MAG/WASHER
 GPS, NEWREF21
 10-6-16, JLL



SET SHI
 NE/S

SET BARN SPIKE
 7.5' RT EP

O.D.O.T. DISTRICT 2 SURVEY OFFICE

PERSONNEL _____

REFERENCE NO. 21

SHEET 4 OF 15

NOTES Huss

H.C. Cordes

R.C. Van Dusen

Cox

DATE 6-18-97

WEATHER CLdy - Fair

TEMP. 63°

ROUTE US 6

COUNTY Wood

TOWNSHIP Center

SECTION 26

T 5 N R 11 E

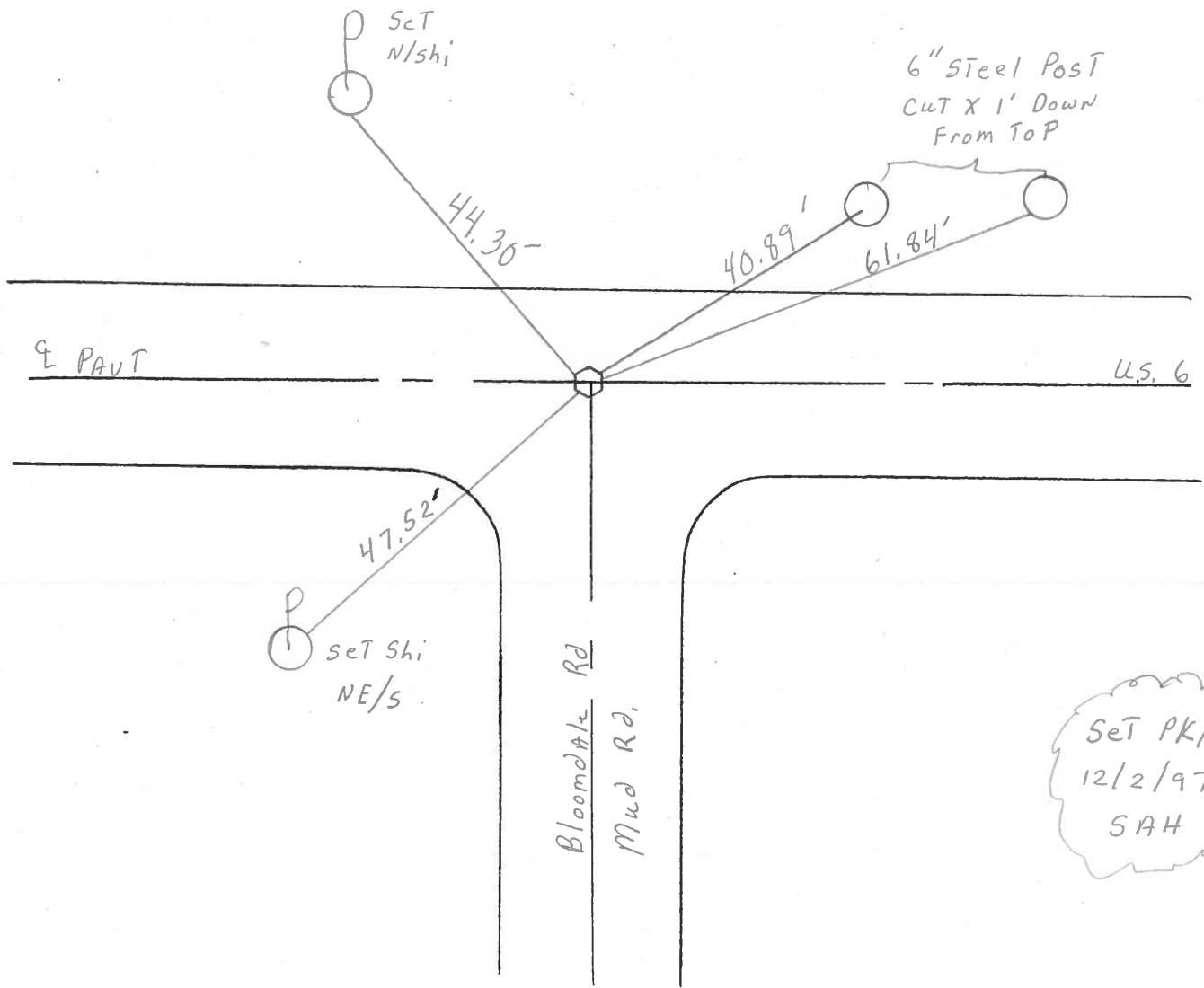
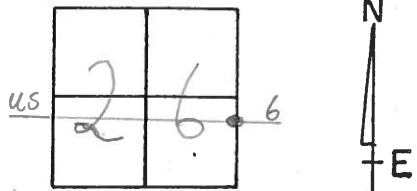
TYPE MONUMENT P.K. NAIL

ON SURFACE - ~~BELOW~~ YES

LEFT - ~~PAV'T.~~ RIGHT .7LT

11.5 TO LT EDGE PAVEMENT

S.L.M.K. 28+987.0



O.D.O.T. DISTRICT 2 SURVEY OFFICE

PERSONNEL

REFERENCE NO. 21

SHEET _____ OF _____

NOTES BARNHISEL

H.C. SOCKMAN

R.C. LOCHAKE

LUCE

DATE May 6, 1987

WEATHER SUNNY

TEMP. +62°

ROUTE US. 6

COUNTY WOOD

TOWNSHIP CENTER

SECTION 26

T5 NR 11 E

TYPE MONUMENT P.K. NAIL

ON SURFACE - ~~BELOW~~ YES

LEFT - ~~C~~ PAV'T. - ~~RIGHT~~ YES

TO - EDGE PAVEMENT

S.L.M. 951 + 64

