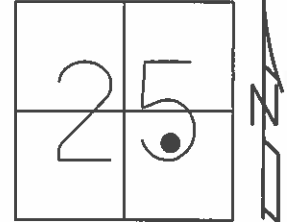


O.D.O.T. DISTRICT 2 SURVEY OFFICE (USE ONLY)

PERSONNEL _____ REFERENCE NO. 23 SHEET 10 OF 22
 NOTES LEU DATE 5-28-15 ROUTE US 6
 H.C. O'DONNELL WEATHER SUNNY COUNTY WOOD
 R.C. LEU TEMP. 70°F TOWNSHIP CENTER
 SECTION 25
 T 5 N R 11 E

TYPE MONUMENT PK NAIL
 ON SURFACE - ~~BELOW~~ ON _____
~~LEFT~~ - CL PAV'T - RIGHT 12.0'
12.0' TO RT EDGE PAVEMENT
 S.L.M. 995+54



Grid: Northing: 619328.2041 Easting: 1684129.024

RECORD:
 STA. 295+98.91
 654.89 WEST OF
 CENTER & FREEDOM
 TWP LINE

NOTE: DIST. REF23-REFA23= 25.36'

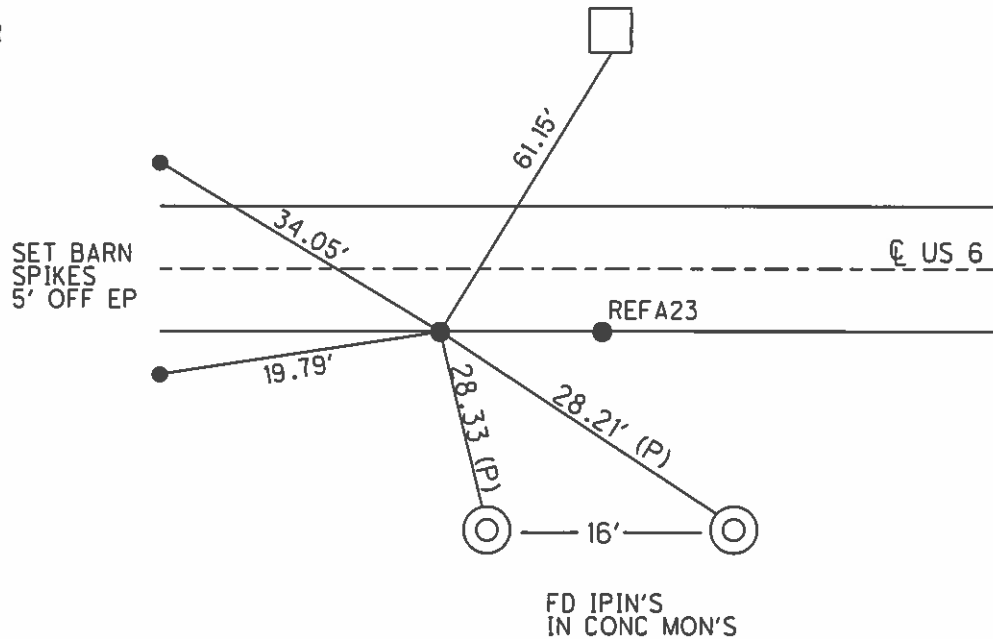
SET PK/WASHER
 12-20-97, SAH

FD PK NAIL
 GPS, REF23
 8-27-13

FD PK/NAIL
 GPS, REF23
 05-28-15

SET MAG/WASHER
 GPS, NEWREF23
 10-6-16, JLL

FD CUT "X" 5/5
 OF CONC FENCE POST
 LEADING EASTERLY



FD IPIN'S
 IN CONC MON'S

O.D.O.T. DISTRICT 2 SURVEY OFFICE

PERSONNEL

REFERENCE NO. 23 SHEET OF

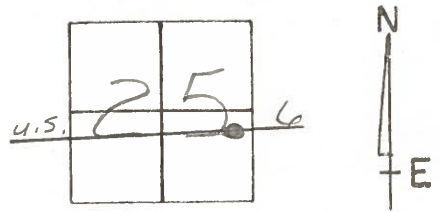
NOTES BoerhiseL
 H.C. SOCKMAN
 R.C. Loehrke
Luce

DATE May 6, 1987
 WEATHER SUNNY
 TEMP. +62°

ROUTE u.s. 6
 COUNTY WOOD
 TOWNSHIP Center
 SECTION 25
T 5 N R 11 E

TYPE MONUMENT Both Pts lg RR Spk
 ON SURFACE - BELOW 1"

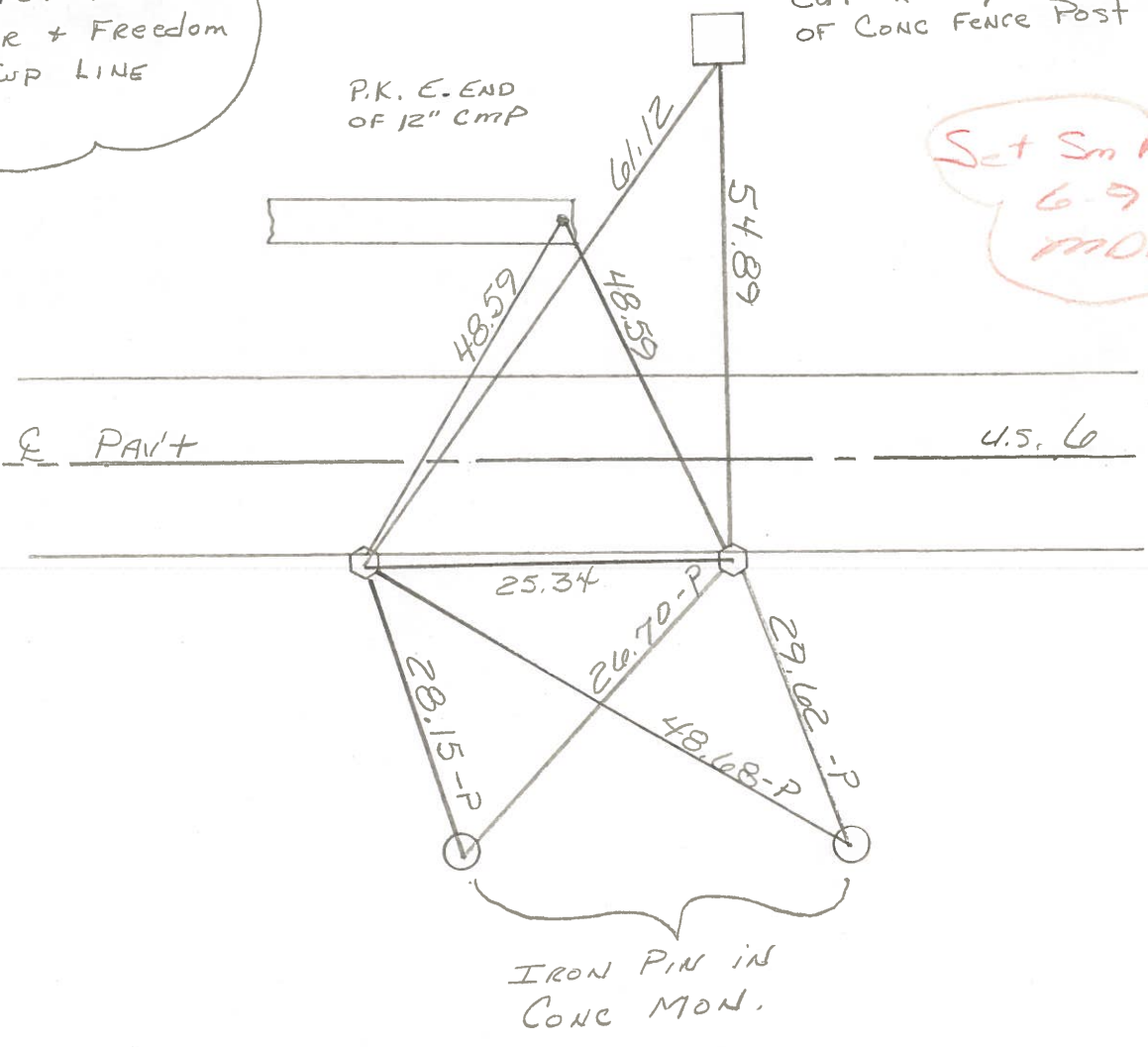
LEFT - C PAV'T. - RIGHT Pt "A" - 11.3 Pt. B - 11.1
 Pt. A 6 ^{Rt of} 6 _{Pt. B} TO Rt EDGE PAVEMENT
 S.L.M. Pt. 'A' 997+30 Pt. 'B' 997+55



Record
 STA. 295 + 98.91
 654.89' West of
 Center + Freedom
 Twp Line

Cut "x" S/S
 OF CONC FENCE Post

Set Sm RR Spks
 6-9-87
 MOB



County WOOD ^{U.S.} S.R. 6

Date 6-9-71

Township CENTER

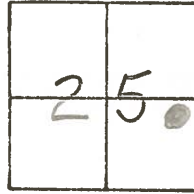
Weather CLEAR

Section 25

Temp. 72°

T5N, R11E

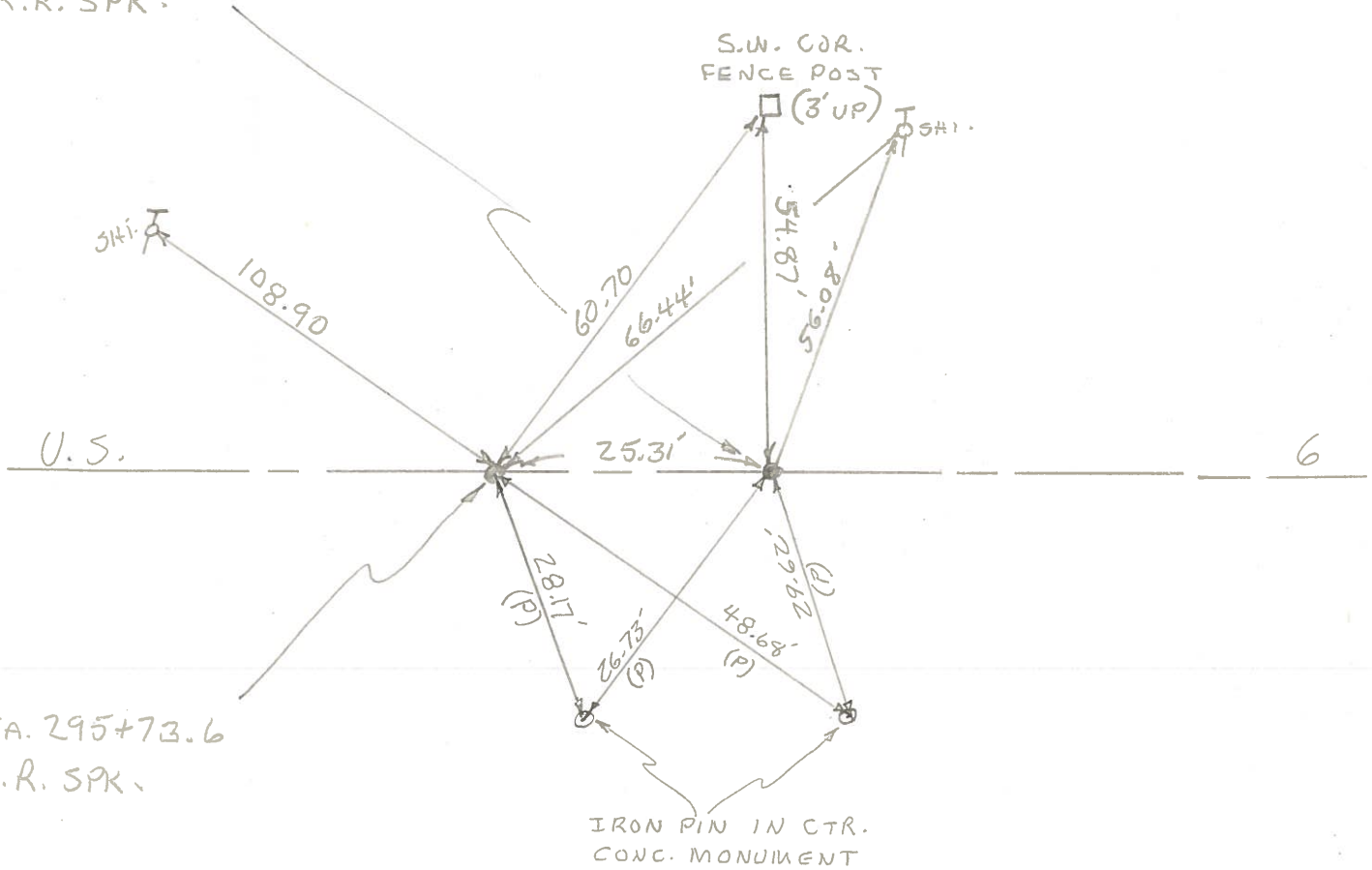
Personnel BURNSIDE
SMITH
BOWERS
HOLCOMBE
ROCCHINE



#23

STA. 295+98.91

654.89' WEST OF CENTER
AND FREEDOM TWP. LINE
R.R. SPK.

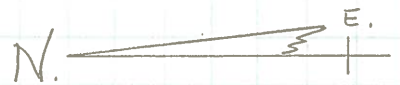


STA. 295+73.6
R.R. SPK.

PERSONNEL	TITLE	PERSONNEL	TITLE
BURNSIDE		Rocchini	
SMITH			
BOWERS			
HOLCOMBE			

COUNTY Wood DATE 6-9-71
 S. R. U.S. 6 WEATHER CLEAR
 SEC. _____ TEMP. +72°

DESCRIPTION _____ LEFT _____ CENTER LINE _____ RIGHT _____ JOB NO. _____



SET R.R. Spk's
 @ SURFACE
 8-21-72

COPIED

23

23A

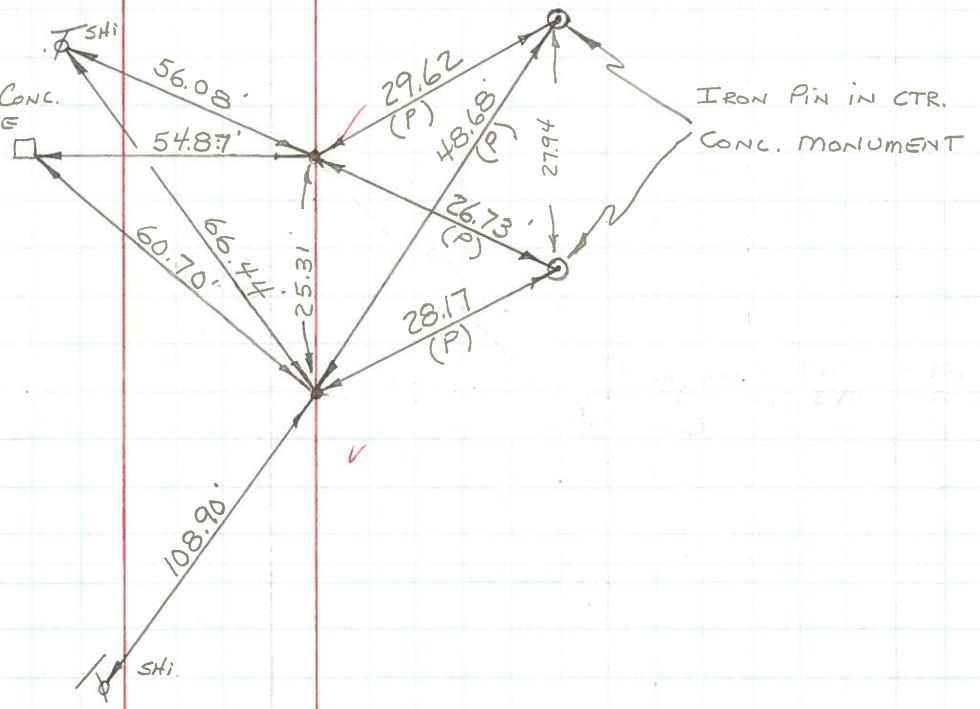
16.72

STA. 295+98.91
 654.89' WEST OF
 FREEDOM CENTER
 Twp. LINE T-S-N R11-E
 R.R. Spk. in S. EDGE PAVE.
 3 1/2" DEEP

STA. 295+73.6
 680.2' WEST OF
 FREEDOM CENTER
 Twp. LINE T-S-N R11-E
 R.R. Spk. in S. EDGE PAVE.
 3 1/2" DEEP

S.W. COR. CONCL.
 COR. FENCE
 POST
 (3' UP)

IRON PIN IN CTR.
 CONCL. MONUMENT



PERSONNEL TITLE PERSONNEL TITLE

Morrison
Booveras
Hulcombe
Kern

COUNTY Wood DATE May 14, 1968
S. R. US#6 WEATHER Cloudy-Showers
SEC. _____ TEMP. +70°

DESCRIPTION Ties to Control points. JOB NO. _____

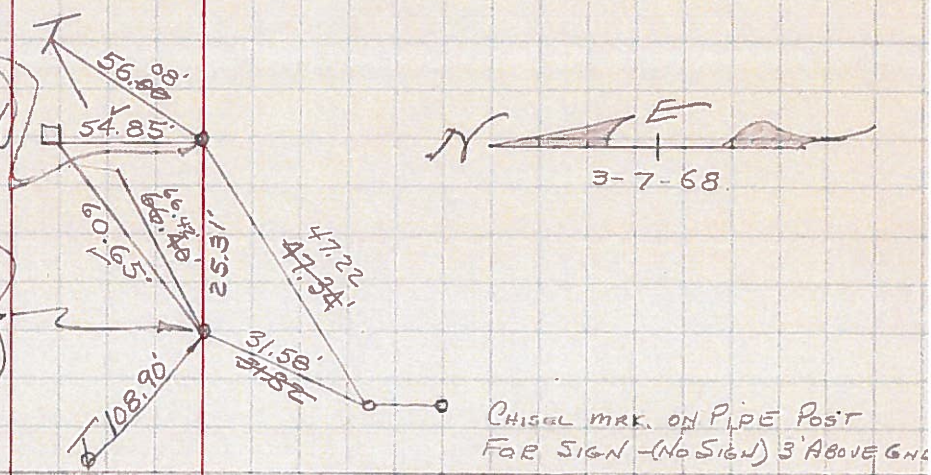
LEFT CENTER LINE RIGHT

Sta. 295+98.91; 654.89' West of
Freedom, Center Twp Line T5N; R11E.
RR. spt. in South edge of Pavement.

23-A

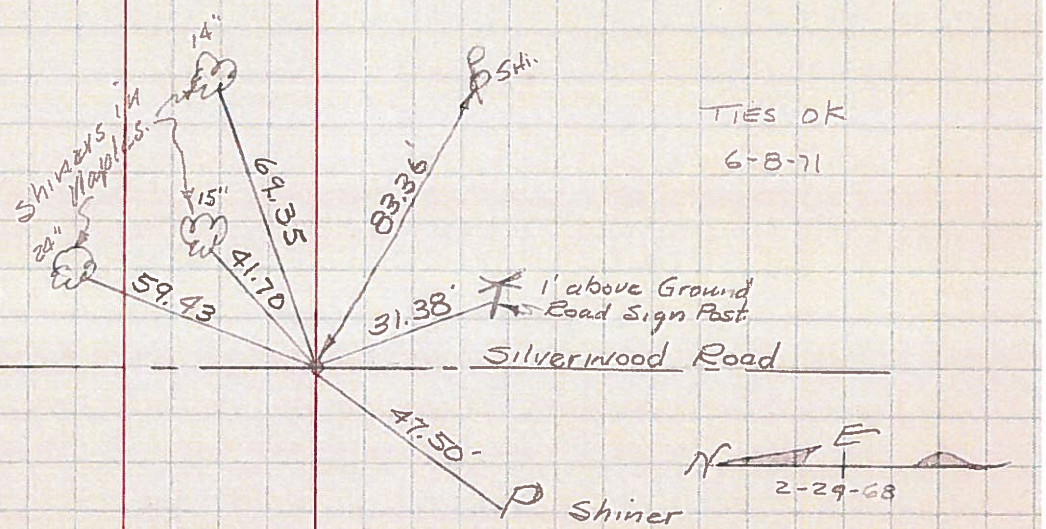
Sta. 295+73.6; 680.2' West of Freedom
Center Twp Line T, 5, N, R, 11, E.
RR. spt. in South edge of Pavement.

23



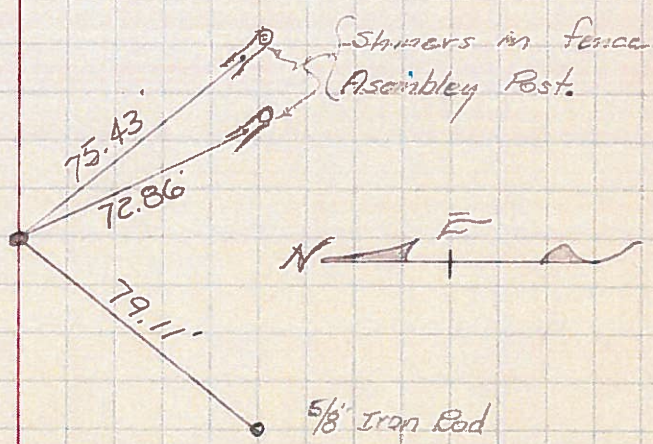
22

RR. spt. in S. edge of Pavmt.
Silverwood Rd. E US#6



20-AA

352' South of Int. 1/4 Sec. 26
Sta. 223+56.70
RR. spt.
Center twp T. 5, N. R. 11, E.
Chamberlin Road.
May, 8, 1968



PERSONNEL	TITLE	PERSONNEL	TITLE	COUNTY	DATE
				Wood	OK 12-30-57
				S.R. U.S.#6	Ault - 4-3-58
					WEATHER 8-24-62
					11-1-62
				SEC.	TEMP. 3-7-68
					8-22-69

DESCRIPTION LEFT CENTER LINE RIGHT JOB NO.

Sta. 295+73.6 680.2' W. of freedom, Center twp. line T5N-R11E. Fd. R.R. Spk. S. Edge pumt.	3-2-68		S. to wit. mon. (broken off) 28.60' SE. " " " 45.20' S.E. to Shi. in maple 38.47' 66.50' N.E. " " " TIP. 66.40 66.28 ✓ N.W.E. To S.W. Cor. Fence Post 60.65' 31.56' S.S.W. To N. pipe Sign Post 31.82' ✓ E. To R.R. Spk. S. edge Pav't. 25.31'	(23) #38
Sta. 295+98.91 654.89' W. of Freedom center twp. line T5N- R11E. Fd. R.R. Spk. S. edge pumt.	3-21-68		38.95 S.W. to wit. mon. (broken off) 39.94 SE. " " " 29.40 S. to 24" maple 26.45 56.10' N.N.E. to T.P. 56.0' 47.15' S.W. To N. Pipe Sign Post 47.34 ✓ N. To S.W. Cor. Conc. Fence Post 54.85	(23A) #39
Sta. 302+53.8 Center Freedom twp Line T5N-R11E, Fd. iron pin over stone S. edge of pumt.	3-7-68		74.57 SSE. to Shiner in 24" oak 38.92' 38.96' S.E. to wit. mon. 39.26' S.W. " " " (broken off) 29.48' 28.25 S. to ^{shiner} oak spk. in 36' oak 28.60' 28.50' 61.16 N.N.E. to Shi. in T.P. 61.22' 61.42' Short Ties { Shiner in S. edge Pavmt NE. 6.00' " " " " " N.W. 6.00'	(24) #40
Sta. 318+13.3 100 Eds. E. of w. line Freedom twp. T5N-R12E Fd. iron pin 3's. of S. Edge Pumt.	3-16-68		S.S.E. to shiner in P.P. 36.58' N. " " " T.P. 58.92' E.S.E. to x on N. Wall G.B. (plumbed) 87.95' 159.15 S.W. to Shi. in P.P. 159.30 Short Ties { N.E. to Shiner in S. Edge Pavmt 6.00' N.W. " " " " " 6.00'	(25) #41