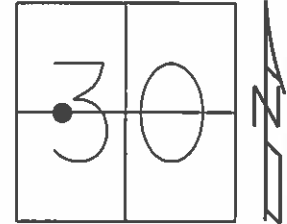


O.D.O.T. DISTRICT 2 SURVEY OFFICE (USE ONLY)

PERSONNEL \_\_\_\_\_ REFERENCE NO. 25 SHEET 13 OF 22  
 NOTES RHOADES DATE 5-29-15 ROUTE US 6  
 H.C. O'DONNELL WEATHER CLOUDY COUNTY WOOD  
 R.C. LEU TEMP. 67°F TOWNSHIP FREEDOM  
 SECTION 30  
 T 5 N R 12 E

TYPE MONUMENT 1" IPIN  
~~ON SURFACE~~ - BELOW 11"  
~~LEFT~~ - Q PAV'T - RIGHT 15'  
3.0' RT TO RT EDGE PAVEMENT  
 S.L.M. 1017+92.89



Grid: Northing: 619317.7398 Easting: 1686367.795

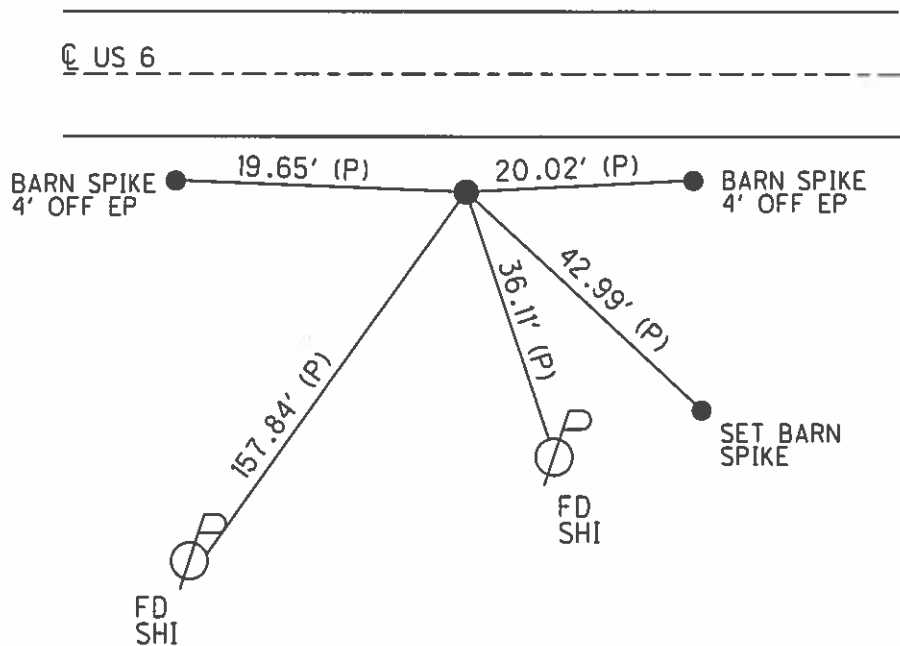
RECORD:  
 STA 318+13.3  
 100 RODS E OF W  
 LINE OF FREEDOM TWP  
 IPIN 3' S. OF EP  
 3" BELOW

POINT UNDER  
 BERM  
 12-2-97, SAH

FD 1" IRON PIN  
 5" BELOW  
 8-20-13

GPS, REF25  
 8-27-13

FD IPIN  
 11" BELOW  
 5-29-15



# O.D.O.T. DISTRICT 2 SURVEY OFFICE

PERSONNEL

REFERENCE NO. 25

SHEET 8 OF 15

NOTES HUSS

H.C. Cordes

R.C. VAN DUSEN

COX

DATE 6-18-97

WEATHER ClDY Fair

TEMP. 63°

ROUTE U.S. 6

COUNTY Wood

TOWNSHIP Freedom

SECTION 30

T. 5 N R. 12 E

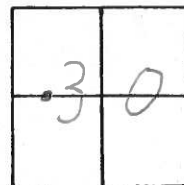
TYPE MONUMENT 1" Iron Pin

ON SURFACE - BELOW 4"

LEFT - & PAV'T. - RIGHT 15.0

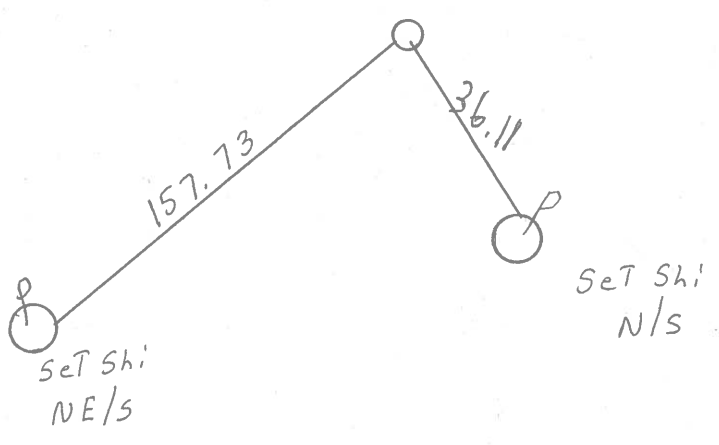
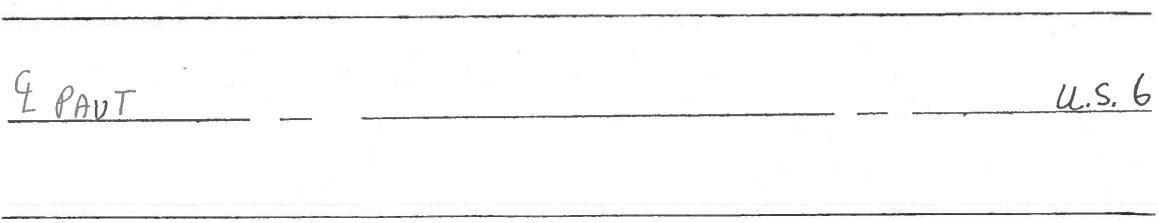
4.0 RT <sup>of</sup> RT EDGE PAVEMENT

S.L.M.K. 31+080



Record  
 STA, 318+13.3  
 100 Rods E of W Line  
 of Freedom TWP  
 Iron Pin 3'S. of S.E.P.  
 3" Deep

Point under  
 Berm  
 12/2/97  
 SAH



# O.D.O.T. DISTRICT 2 SURVEY OFFICE

PERSONNEL

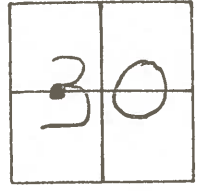
REFERENCE NO. 25 SHEET \_\_\_\_\_ OF \_\_\_\_\_

NOTES BARNHISEL  
 H.C. SOCKMAN  
 R.C. Loehrke  
Luce

DATE May 6, 1987  
 WEATHER SUNNY  
 TEMP. +65°

ROUTE U.S. 6  
 COUNTY WOOD  
 TOWNSHIP Freedom  
 SECTION 30  
T 5 N R 12 E

TYPE MONUMENT 1" IRON PIN  
 ON SURFACE - BELOW 4"  
 LEFT - 0 PAV'T. - RIGHT 15.0  
 H.O. RT. TO RT. EDGE PAVEMENT  
 S.L.M. 1019+70



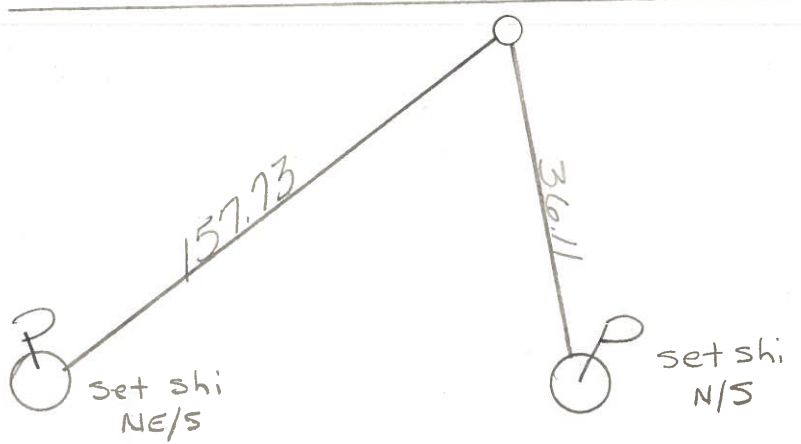
RECORD  
 STA. 318+13.3  
 100 Rods E. OF W. LINE  
 OF FREEDOM TWP.  
 IRON PIN 3'S. OF S. E.P.  
 3" Deep

Not Covered  
 0.5 RT OF RT Ed  
 6-9-87  
 MAB

\_\_\_\_\_

E PAV'T. ----- u.s. 6

\_\_\_\_\_



County WOOD <sup>U.S.</sup> ~~S.R.~~ 6

Date 5-16-72

Township FREEDOM

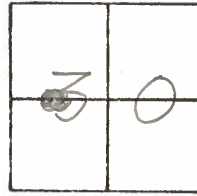
Weather CLOUDY

Section 30

Temp. 62°

T5N, R12E

Personnel BURNSIDE  
SMITH  
\_\_\_\_\_  
\_\_\_\_\_  
\_\_\_\_\_

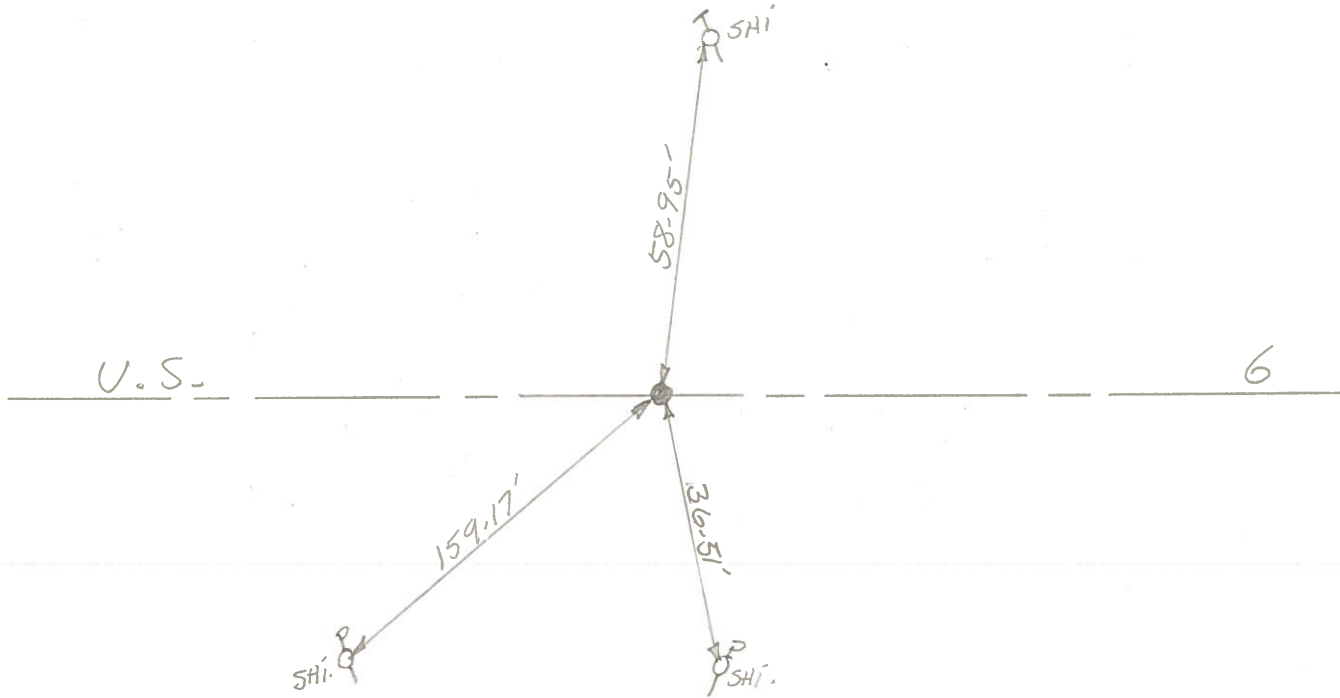


# 25

STA. 318+13.3

100 RODS E. OF W. LINE  
OF FREEDOM TWP.

IRON PIN IS 3' S. OF S. EDGE  
PANT. 3" DEEP



PERSONNEL	TITLE	PERSONNEL	TITLE
BURNSIDE			
SMITH			

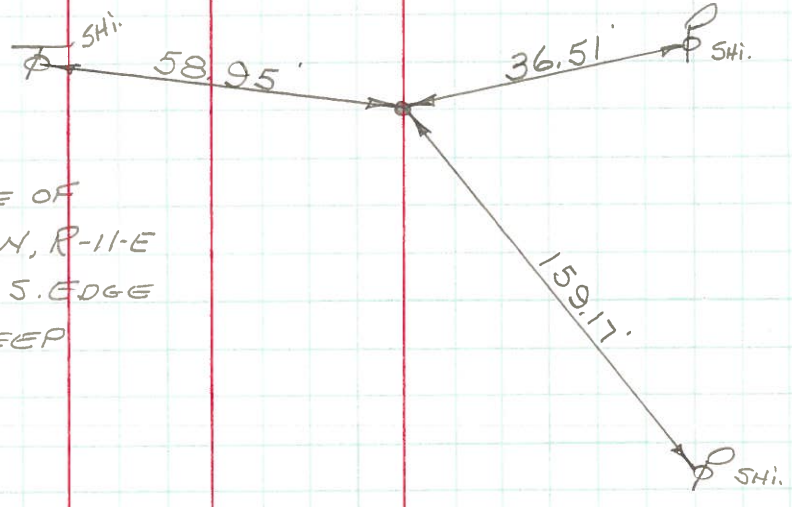
COUNTY Wood DATE 5-16-72  
 S. R. U.S. 6 WEATHER Cloudy  
 SEC. \_\_\_\_\_ TEMP. +62°

DESCRIPTION \_\_\_\_\_ LEFT \_\_\_\_\_ CENTER LINE \_\_\_\_\_ RIGHT \_\_\_\_\_ JOB NO. \_\_\_\_\_



COPIED

#25



STA. 318+13.3  
 100 Fds. E. OF W. LINE OF  
 FREEDOM TWP. T-5-N, R-11-E  
 IRON PIN IS 3' S. OF S. EDGE  
 PAVEMENT & 3" DEEP



PERSONNEL TITLE PERSONNEL TITLE

COUNTY Wood

DATE OK 12-30-51

S.R. U.S.#6

Ault - 4-3-58

WEATHER 8-24-62

11-1-62

SEC.

TEMP.

3-7-68

8-22-69

DESCRIPTION

LEFT

CENTER LINE

RIGHT

JOB NO.

Sta. 295+73.6  
680.2' W. of Freedom,  
Center twp. line T5N-R11E.  
Fd. P.R. Spk. S. Edge pumt.

23

#38

66.50'

S. to wit. mon. (broken off) 28.60  
S.E. " " " 45.2  
S.E. to Shi. in maple 38.4  
N.E. " " " T.P. 66.40 66.2  
N.N.E. To S.W. Cor. Fence Post 60.6  
S.S.W. To N. pipe Sign Post 31.82  
E. To R.R. Spk. S. edge Pav't. 25.31

Sta. 295+98.91  
654.89' W. of Freedom  
center twp. line T5N-  
R11E. Fd. P.R. Spk. S.  
edge pumt.

23A

#39

56.10'

47.15'

S.W. to wit. mon. (broken off) 38.8  
S.E. " " " 39.9  
S. to 24" maple 29.6  
N.N.E. to T.P. 26.4  
S.W. To N. Pipe Sign Post 56.6  
N. To S.W. Cor. Conc. Fence Post 47.3  
54.8

Sta. 302+53.8  
Center Freedom twp  
Line T5N-R11E,  
Fd. iron pin over stone  
S. edge of pumt.

24

#40

74.57

38.96

28.25

61.16

SSE. to Shiner in 24" oak 38.92  
S.E. to wit. mon. 39.26  
S.W. " " " (broken off) 29.48  
S. to <sup>shiner</sup> ~~best~~ spk. in 36" oak 28.60 28.50  
N.N.E. to Shi. in T.P. 61.22 61.42  
short ties { Shiner in S. edge Pavmt NE 6.00  
" " " " " N.W. 6.00

Sta. 318+13.3  
100 Pds. E. of W. line  
Freedom twp. T5N-R12E  
Fd. iron pin 3's. of S. Edge  
Pumt.

25

#41

159.15

short ties

SSE. to shiner in P.P. 36.58  
N. " " " T.P. 58.92  
E.S.E. to X on N. Wall G.B. (plumb) 87.95  
S.W. to Shi. in P.P. 159.30  
N.E. to Shiner in S. Edge Pavmt 6.00  
N.W. " " " " " 6.00