

O.D.O.T. DISTRICT 2 SURVEY OFFICE (USE ONLY)

PERSONNEL

REFERENCE NO. 27

SHEET 14 OF 35

NOTES HUSS

DATE 6/19/97

ROUTE US 6

H.C. CORDE

WEATHER FOG

COUNTY WOOD

R.C. VANDUSEN

TEMP. 70°

TOWNSHIP FREEDOM

COX

SECTION 29

DWG BY RHOADES PID R/W, NO PID

T 5 N R 12 E

TYPE MONUMENT 1" IPIPE

~~ON SURFACE~~ - BELOW 2"

OFFSET \odot PAVEMENT 17.2' ~~RT~~ : RT

0.35' TO CURB EDGE PAVEMENT

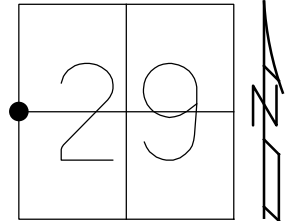
STATION: 1057+48.14

HORZ.DATUM: NAD83 2011

GEOID: NAVD88 2018

GRID: NORTHING: 619311.473

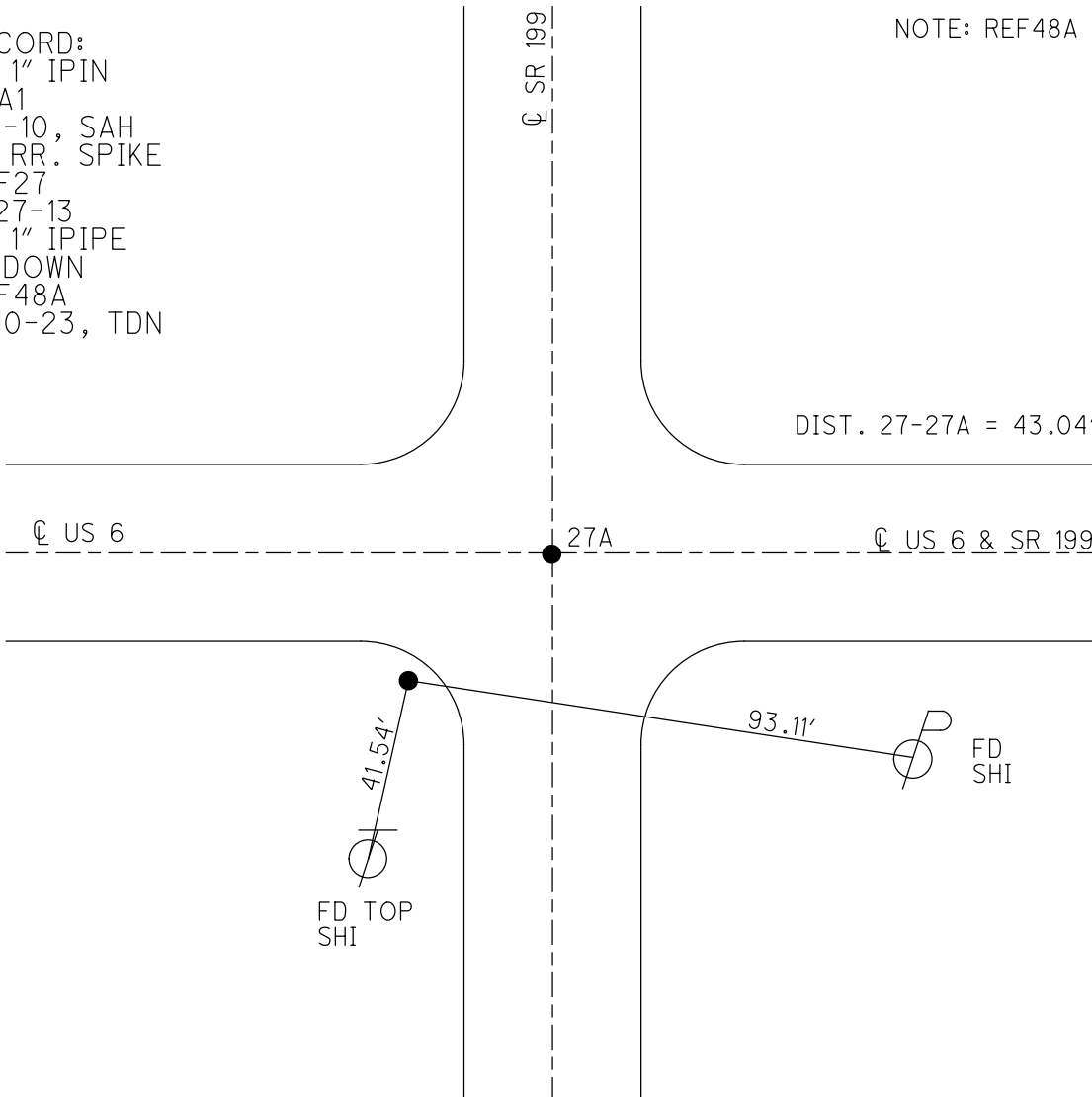
EASTING: 1690323.030



RECORD:
FD 1" IPIN
SVA1
2-1-10, SAH
FD RR. SPIKE
REF27
8-27-13
FD 1" IPIPE
2" DOWN
REF48A
5-10-23, TDN

NOTE: REF48A SR 199

DIST. 27-27A = 43.04'



O.D.O.T. DISTRICT 2 SURVEY OFFICE (USE ONLY)

PERSONNEL _____ REFERENCE NO. 27 SHEET 15 OF 22
 NOTES HUSS DATE 6-19-97 ROUTE US 6
 H.C. CORDE WEATHER CLOUDY-FOG COUNTY WOOD
 R.C. VANDUSEN TEMP. 70°F TOWNSHIP FREEDOM
COX SECTION 29
 T 5 N R 12 E

TYPE MONUMENT 1" IPIPE

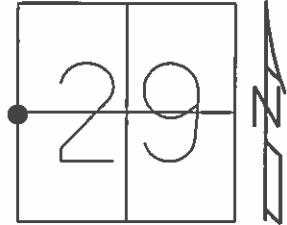
~~ON SURFACE~~ - BELOW 2"

~~LEFT~~ - \odot PAV'T - RIGHT 17.2', 0.35' OFF OF CURB

- TO - EDGE PAVEMENT

S.L.M. 1057+48.14

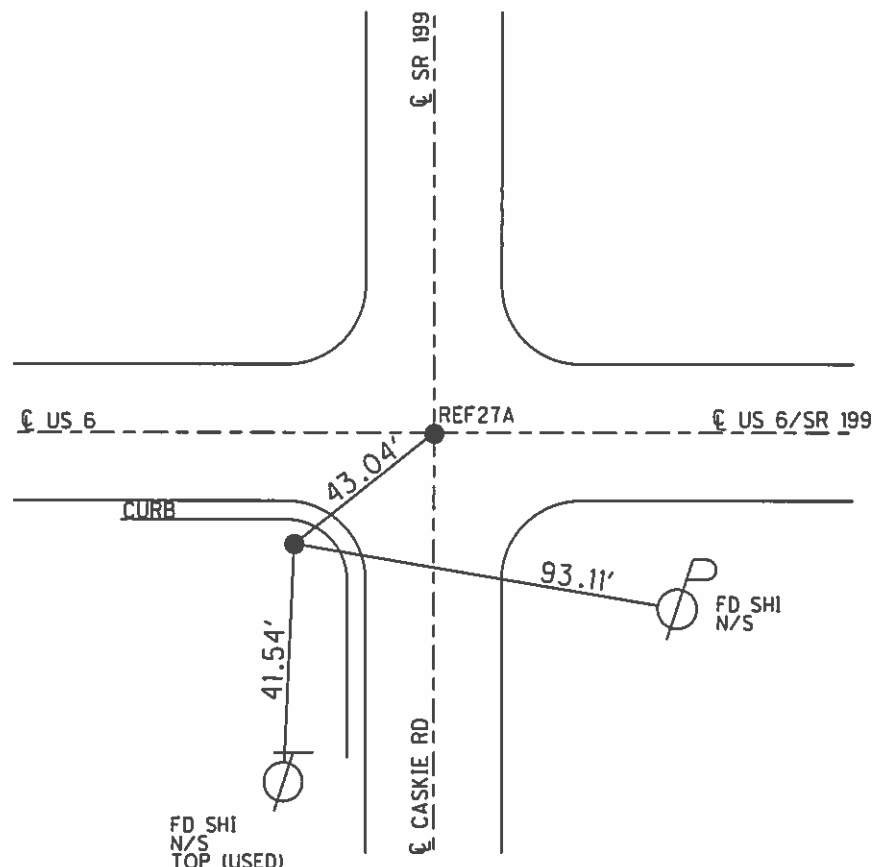
Grid: Northing: 619311.4421 Easting: 1690323.036



RECORD:
 FD 1" IPIN
 GPS, SVA1
 2-1-10, SAH

 FD RR. SPIKE
 8-20-13

 GPS, REF27
 8-27-13



O.D.O.T. DISTRICT 2 SURVEY OFFICE (USE ONLY)

PERSONNEL

REFERENCE NO. 27

SHEET 1 OF 2

NOTES HUSS

DATE 6/19/97

ROUTE SR 6

H.C. CORDE

WEATHER CLOUDY-FOG

COUNTY WOOD

R.C. VANDUSEN

TEMP. 70°

TOWNSHIP FREEDOM

COX

SECTION 29

T 5 N R 12 E

TYPE MONUMENT 1" IPIN

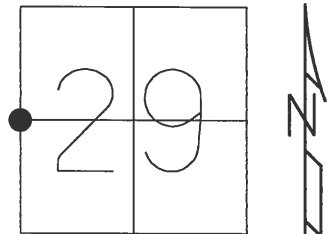
~~ON SURFACE~~ - BELOW 2"

~~LEFT~~ - ☉ PAV'T - RIGHT 17.2', 0.35' OFF OF CURB

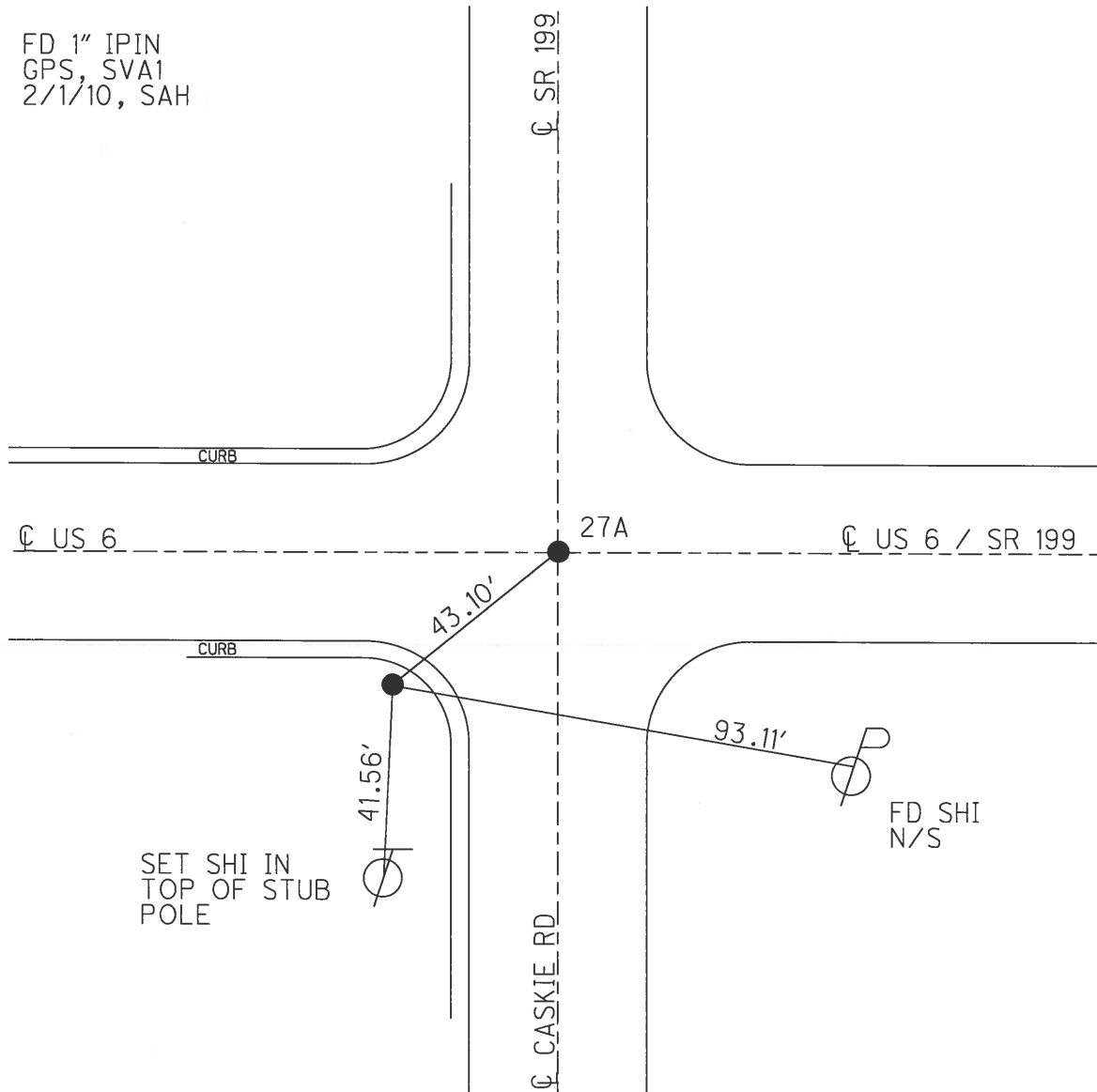
TO EDGE PAVEMENT

S.L.M. 1059+16.8

Grid: Northing: 619303.1284 Easting: 1690348.1769



FD 1" IPIN
GPS, SVA1
2/1/10, SAH



SET SHI IN
TOP OF STUB
POLE

O.D.O.T. DISTRICT 2 SURVEY OFFICE

PERSONNEL

REFERENCE NO. 27-27A

SHEET 10 OF 15

NOTES S. HUSS

H.C. B. CORDE

DATE 6-19-97

ROUTE U.S. 6

R.C. B. VANDUSEN

WEATHER CLOUDY - FOG

COUNTY WOOD

A C. COX

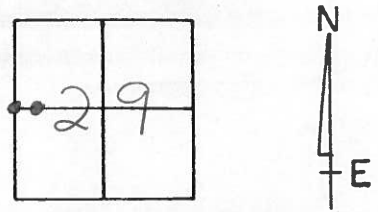
TEMP. +70°F

TOWNSHIP FREEDOM

SECTION 29

T5 N R12 E

TYPE MONUMENT PT "A" = 1" IRON ROD PT "B" = SM. RR SPIKE
 ON SURFACE - BELOW PT "A" = 2" BELOW PT "B" = ON SURFACE
 LEFT - & PAV'T. - RIGHT PT "A" = 17.2' RT & AND 0.35' OFF OF CURB
 - TO - EDGE PAVEMENT PT "B" ON &
 S.L. ~~M.~~ PT "A" 32+283 PT "B" 32+294.3



RECORD PT "B"
 0+00 U.S. 199 NORTH

SET PK/WASHER
 12-02-97
 SAH

RECORD PT "C"
 STA. 358+40.83
 T.S.
 DIDN'T FIND
 IN 1987

FO "X"
 CUT IN CURB

CTR. PUNCHED
 N.W. BOLT

& PAVMT.

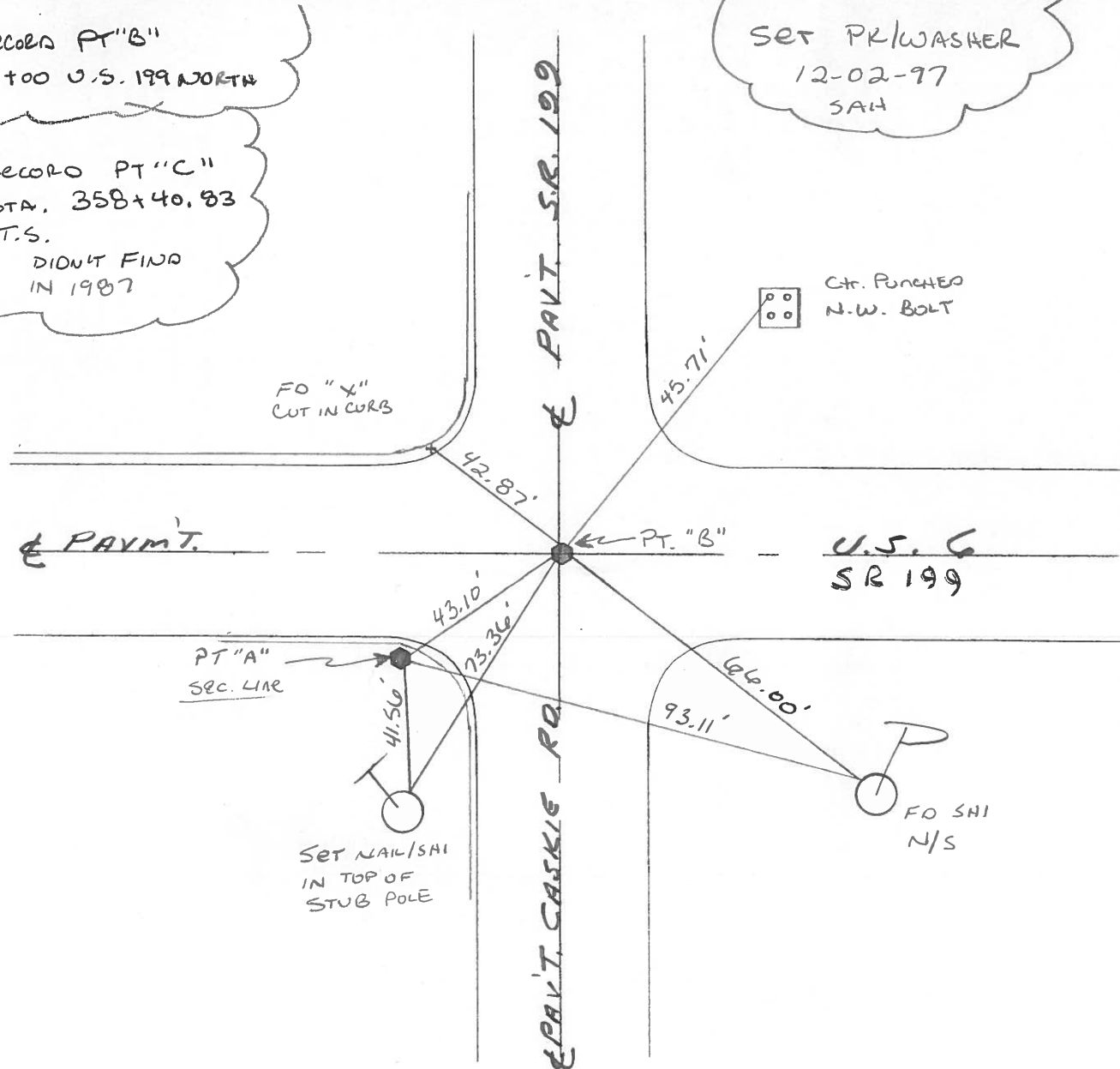
U.S. 6
 SR 199

PT "A"
 SEC. LINE

SET NAIL/SHI
 IN TOP OF
 STUB POLE

FO SHI
 N/S

PAV'T. CASKIE RD



O.D.O.T. DISTRICT 2 SURVEY OFFICE

PERSONNEL

REFERENCE NO. 27-27A SHEET OF

NOTES BARNHISEL

H.C. SOCKMAN

R.C. LoehrKE

LUCE

DATE May 6, 1987

WEATHER SUNNY

TEMP. +65°

ROUTE U.S. 6

COUNTY WOOD

TOWNSHIP Freedom

SECTION 29

T 5 N R 12 E

(Sec. LINE)

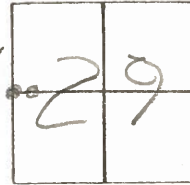
TYPE MONUMENT Pt "B" 5m RR Spk Pt "A" 1" Iron Pipe

ON SURFACE - BELOW Pt "B" yes Pt "A" OFF Road

LEFT - € PAV'T. - RIGHT Pt "B" ON € Pt "A" RT OF. Rt Ed

- TO - EDGE PAVEMENT 6.4 White Inca

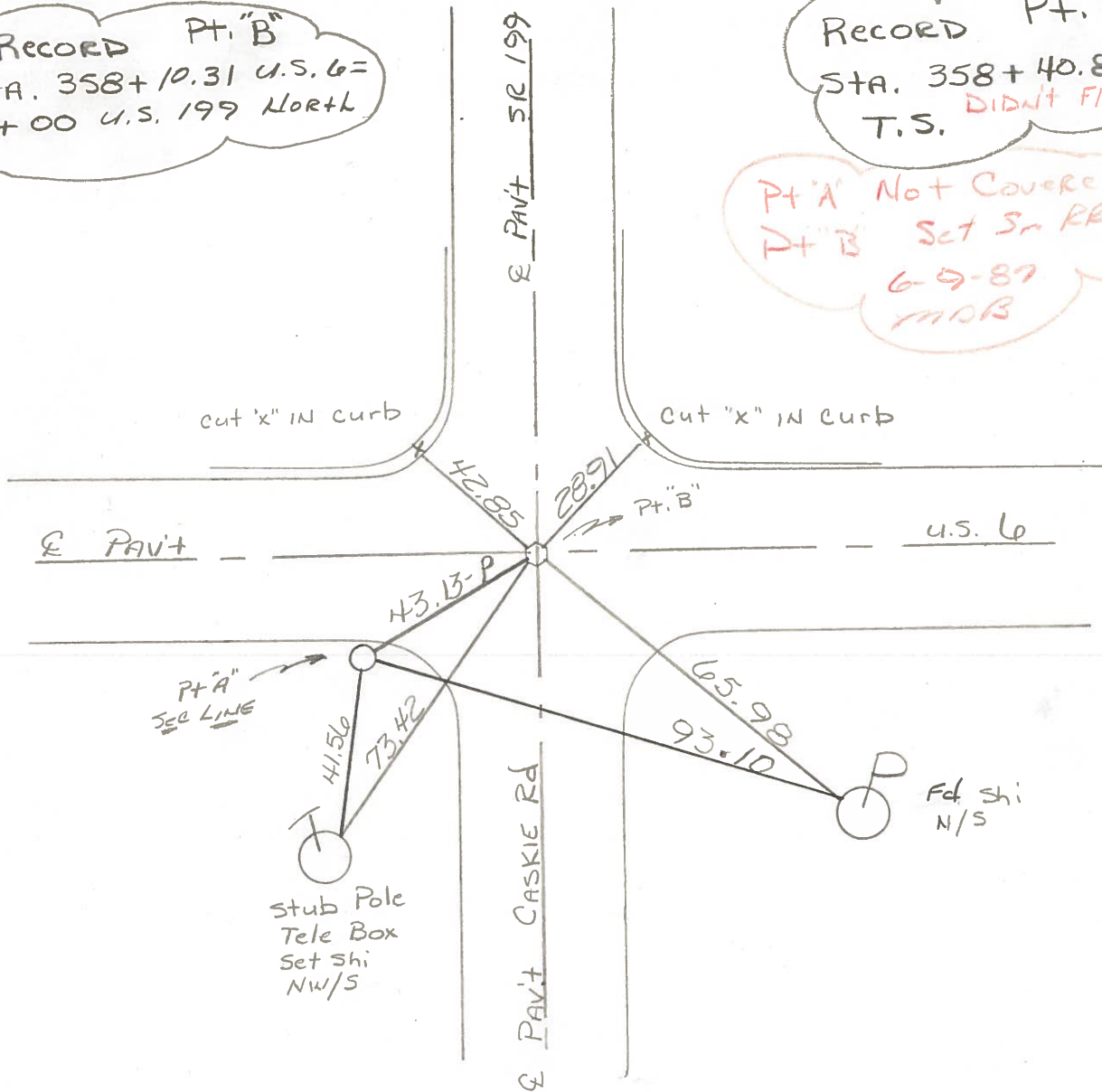
S.L.M. Pt "B" 1059+66 Pt "A" 1059+30



Record Pt. "B"
STA. 358+10.31 U.S. 6 =
0+00 U.S. 199 North

Record Pt. "C"
STA. 358+40.83
T.S. DIDN'T FIND

Pt "A" Not Covered
Pt "B" Set 5m RR Spk
6-9-87
MAB



County WOOD U.S. 6

Date 5-16-72

Township FREEDOM

Weather CLOUDY

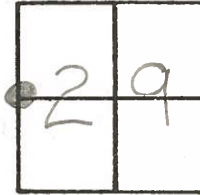
Section 29

Temp. 62°

T5N, R12E

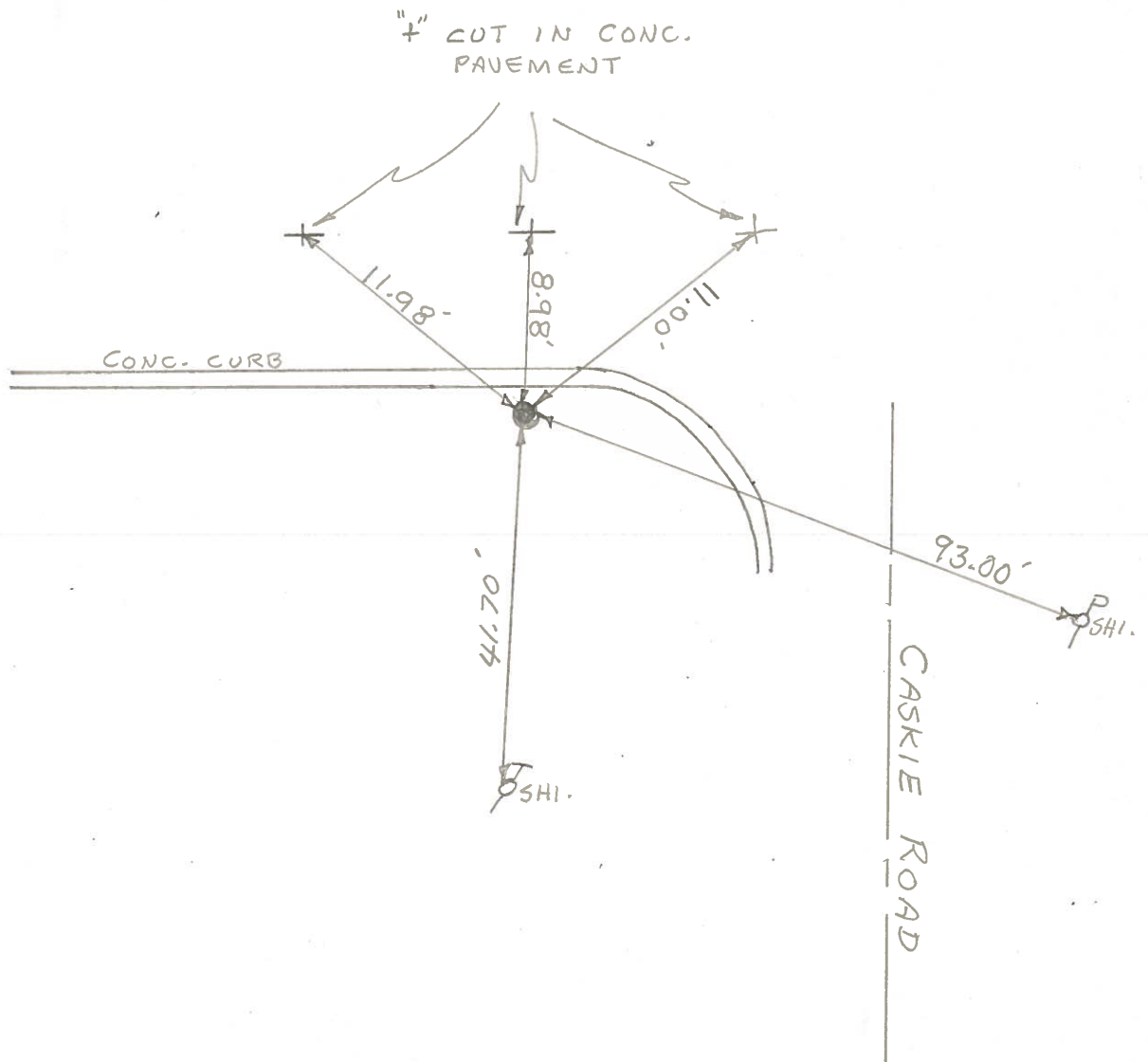
Personnel BURNSIDE

SMITH



#27

IRON PIPE 0.30' S. OF THE BACK OF CURB



PERSONNEL TITLE PERSONNEL TITLE

BURNSIDE _____

SMITH _____

COUNTY Wood

DATE 5-15-72

S. R. U.S. 6

WEATHER Cloudy

SEC. _____

TEMP. +62°

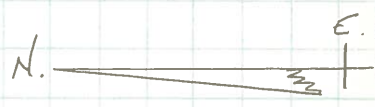
DESCRIPTION END CONTROL POINT CHECK OF 5-16-72

JOB NO. _____

LEFT

CENTER LINE

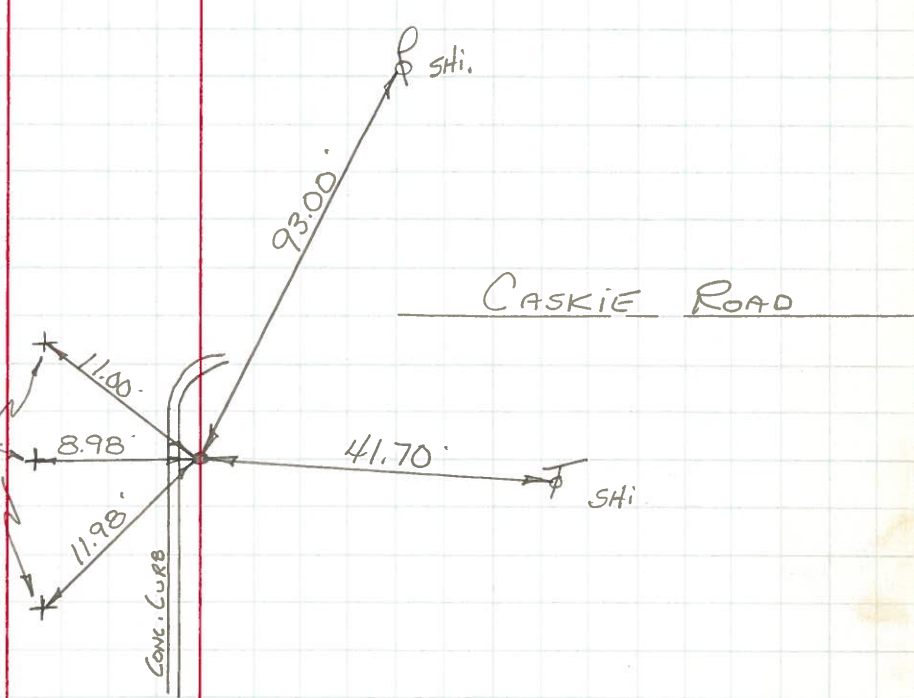
RIGHT



COPIED
 *27

E. 1/4 Post SEC. 30
 FREEDOM Twp.
 T-5-N R-12-E
 OR W. 1/4 Post SEC. 29
 FREEDOM Twp.
 IRON PIPE 0.30' S. OF
 THE BACK OF CURB

+ CUT IN
 CONC.
 PAVEMENT



PERSONNEL TITLE PERSONNEL TITLE

COUNTY Wood DATE 12-10-54

S.R. U.S.#6 WEATHER

SEC. TEMP.

DESCRIPTION New Rochester Rt #6 Relocation JOB NO.

LEFT CENTER LINE T.S. + 30190 RIGHT

