

O.D.O.T. DISTRICT 2 SURVEY OFFICE (USE ONLY)

PERSONNEL

REFERENCE NO. 27 B

SHEET 11 OF 15

NOTES NIESE

DATE 5/19/23

ROUTE US 6

H.C. AUBLE

WEATHER SUNNY

COUNTY WOOD

R.C. NIESE

TEMP. 58°

TOWNSHIP FREEDOM

SECTION 29

DWG BY ASTON

PID R/W NO PID

T 5 N R 12 E

TYPE MONUMENT 1" IPIPE

ON SURFACE - ~~BELOW~~ ON

OFFSET $\text{\textcircled{C}}$ PAVEMENT 28.5' S of N.RIVER RD
20' TO LT EDGE PAVEMENT

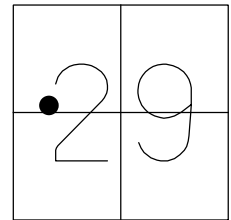
STATION: 1068+01

HORZ.DATUM: NAD83 2011

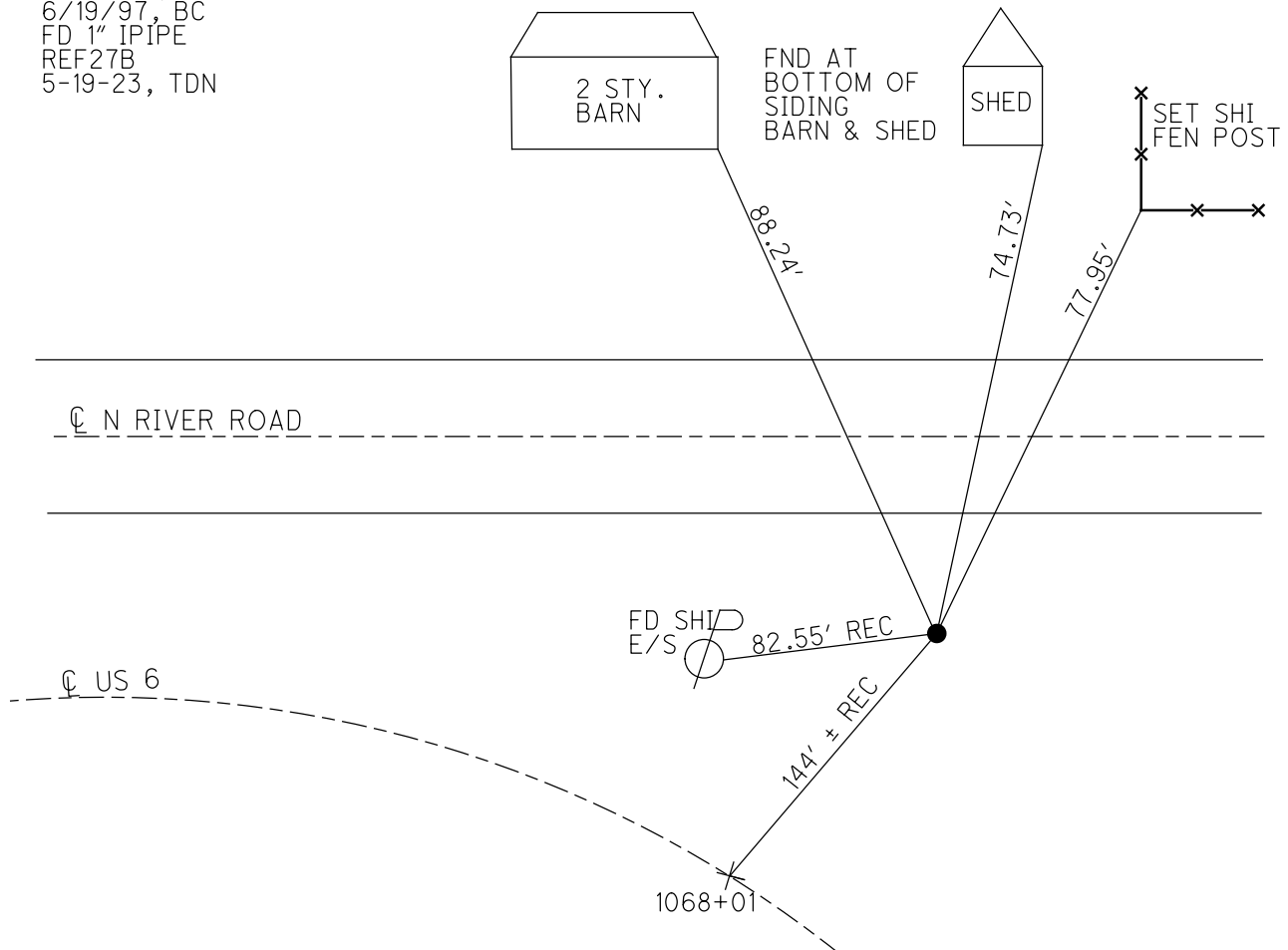
GEOID: NAVD88 2018

GRID: NORTHING: 619327.721

EASTING: 1691237.314



RECORD: P.I.
 STA. 366+84.79
 $\Delta = 48^\circ 17'$ RT
 FD 1" IPIPE
 11/25/86, MB
 6/19/97, BC
 FD 1" IPIPE
 REF27B
 5-19-23, TDN



O.D.O.T. DISTRICT 2 SURVEY OFFICE

PERSONNEL

REFERENCE NO. 27-B

SHEET 11 OF 15

NOTES S. HUSS

H.C. B. VAN DUSEN

DATE 6-19-97

ROUTE U.S. 6

R.C. B. CORDS

WEATHER _____

COUNTY WOOD

A C. COX

TEMP. _____

TOWNSHIP Freedom

SECTION 29

TS N R 12 E

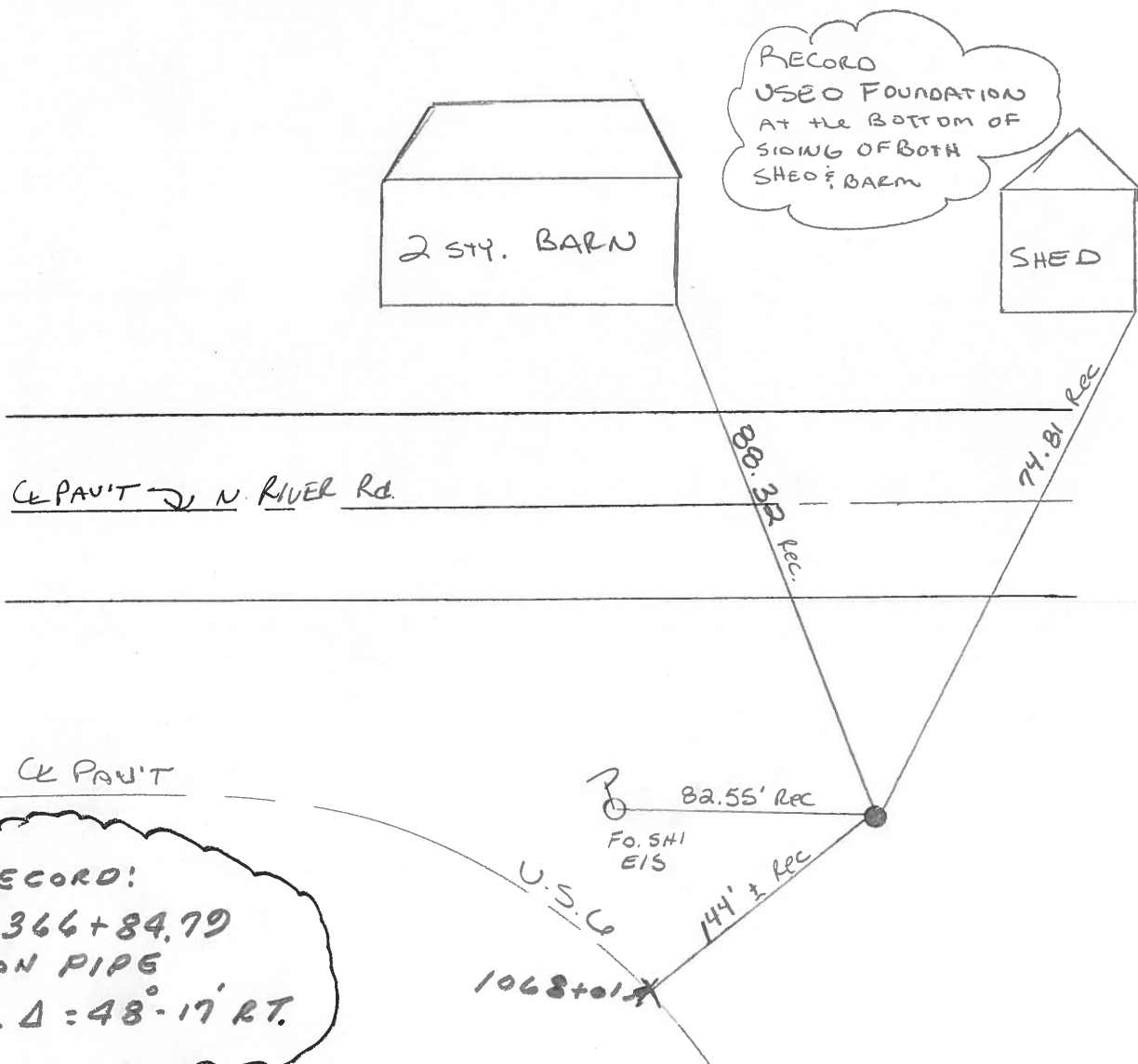
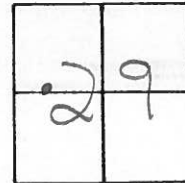
TYPE MONUMENT 1" IRON ROD

ON SURFACE - ~~BELOW~~ YES

LEFT - ~~C PAV'T.~~ RIGHT 27' OF N. RIVER RD

20' TO LT. EDGE PAVEMENT OF N. RIVER RD.

S.L. 32+548, 25



O.D.O.T. DISTRICT 2 SURVEY OFFICE

PERSONNEL

REFERENCE NO. 27-B

SHEET OF

NOTES BARNHISEL

H.C. Loehrke

R.C. SOCKMAN

HOFFMAN

DATE 11-25-86

WEATHER SUNNY

TEMP. +45°

ROUTE U.S. 6

COUNTY WOOD

TOWNSHIP FREEDOM

SECTION 29

T. S. N. R. 12 E

TYPE MONUMENT 1" Iron Pipe

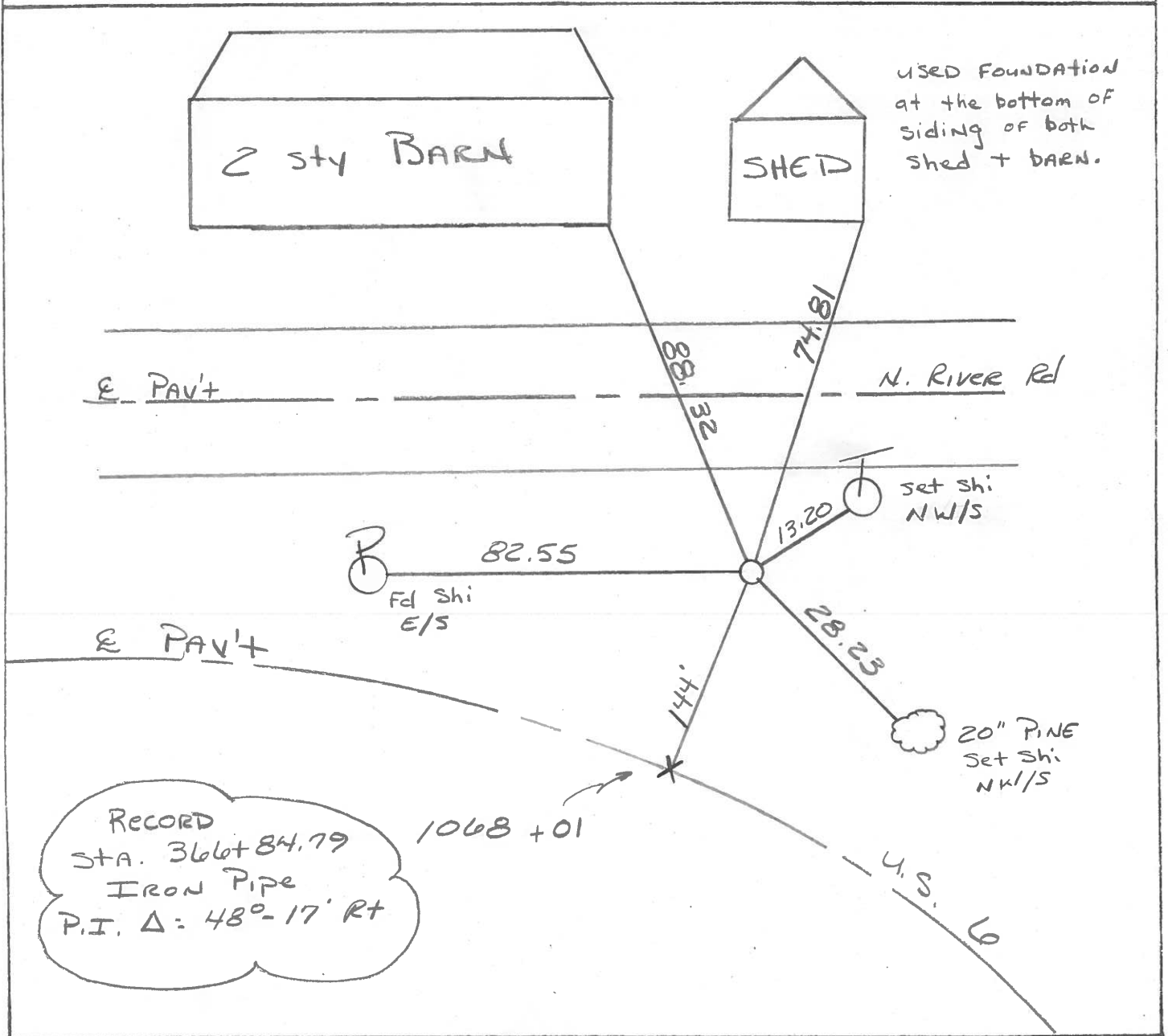
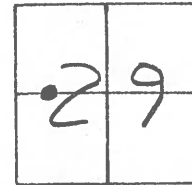
ON SURFACE - BELOW yes

LEFT- & PAV'T. - RIGHT 27.0

20' TO Lt EDGE PAVEMENT

S.L.M. 1068 +01

144' Lt of E "6"



County WOOD U.S. 6

Date MAY-15-68

Township FREEDOM

Weather P.T. CLOUDY

Section 29

Temp. 70°

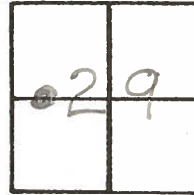
TSN, RIZE

Personnel MORRISON

BOWERS

HOLCOMBE

KERN

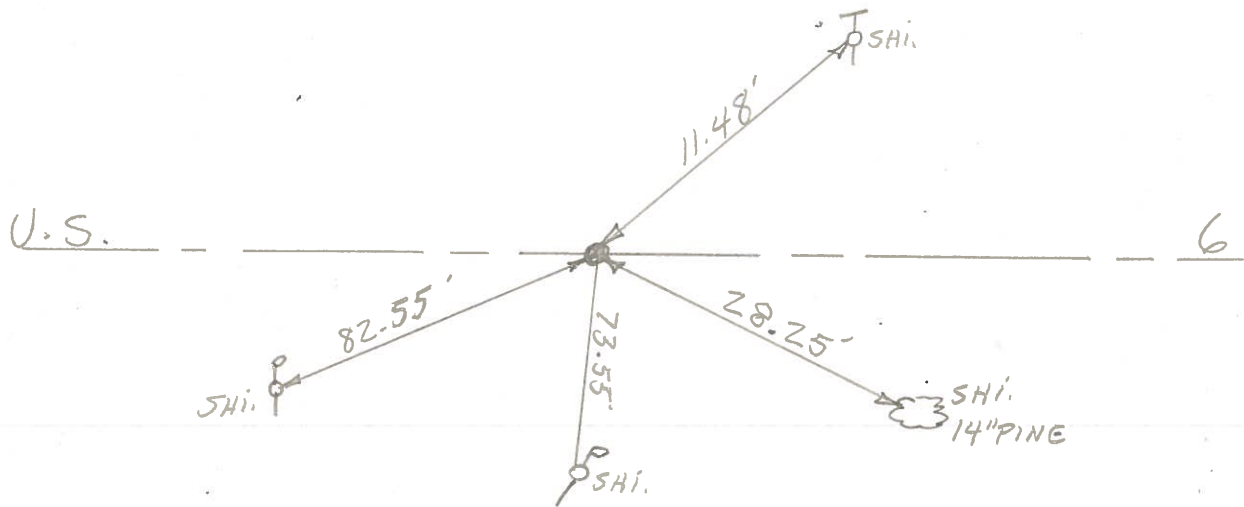


27-B

STA. 366+84.79

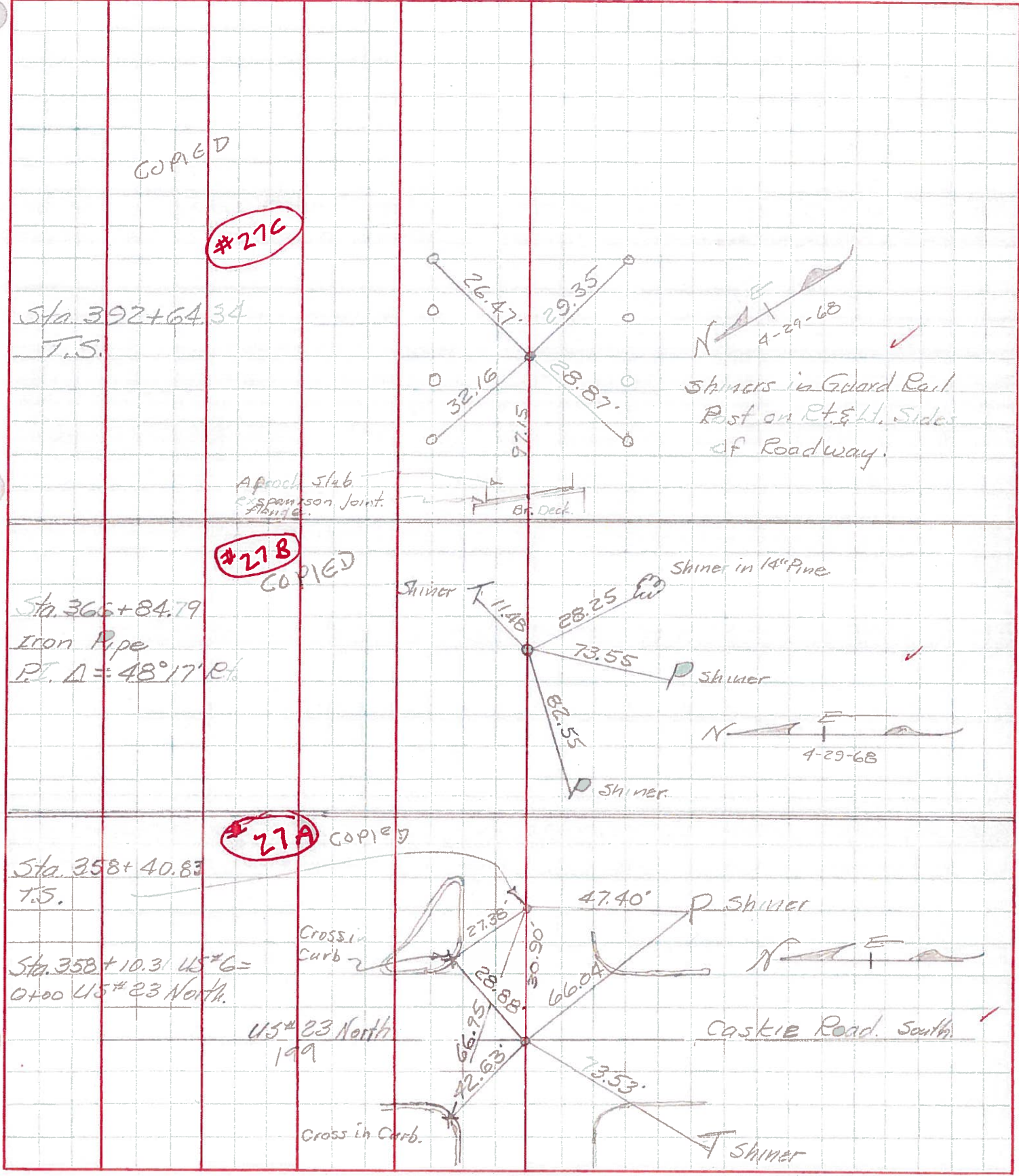
IRON PIPE

P.I. Δ = 48°-17' RT.



PERSONNEL	TITLE	PERSONNEL	TITLE	COUNTY	Wood	DATE	May 15, 1968
Morrison				S. R.	US#6	WEATHER	Pt. Cloudy
Bowers				SEC.		TEMP.	+70°
Holcombe							
Earn							

DESCRIPTION Tie to Control Points LEFT CENTER LINE RIGHT JOB NO.



COPIED

#276

#278

#27A

US# 23 North 199

PERSONNEL TITLE PERSONNEL TITLE

COUNTY Wood

DATE 12-10-54

S.R. U.S. #6

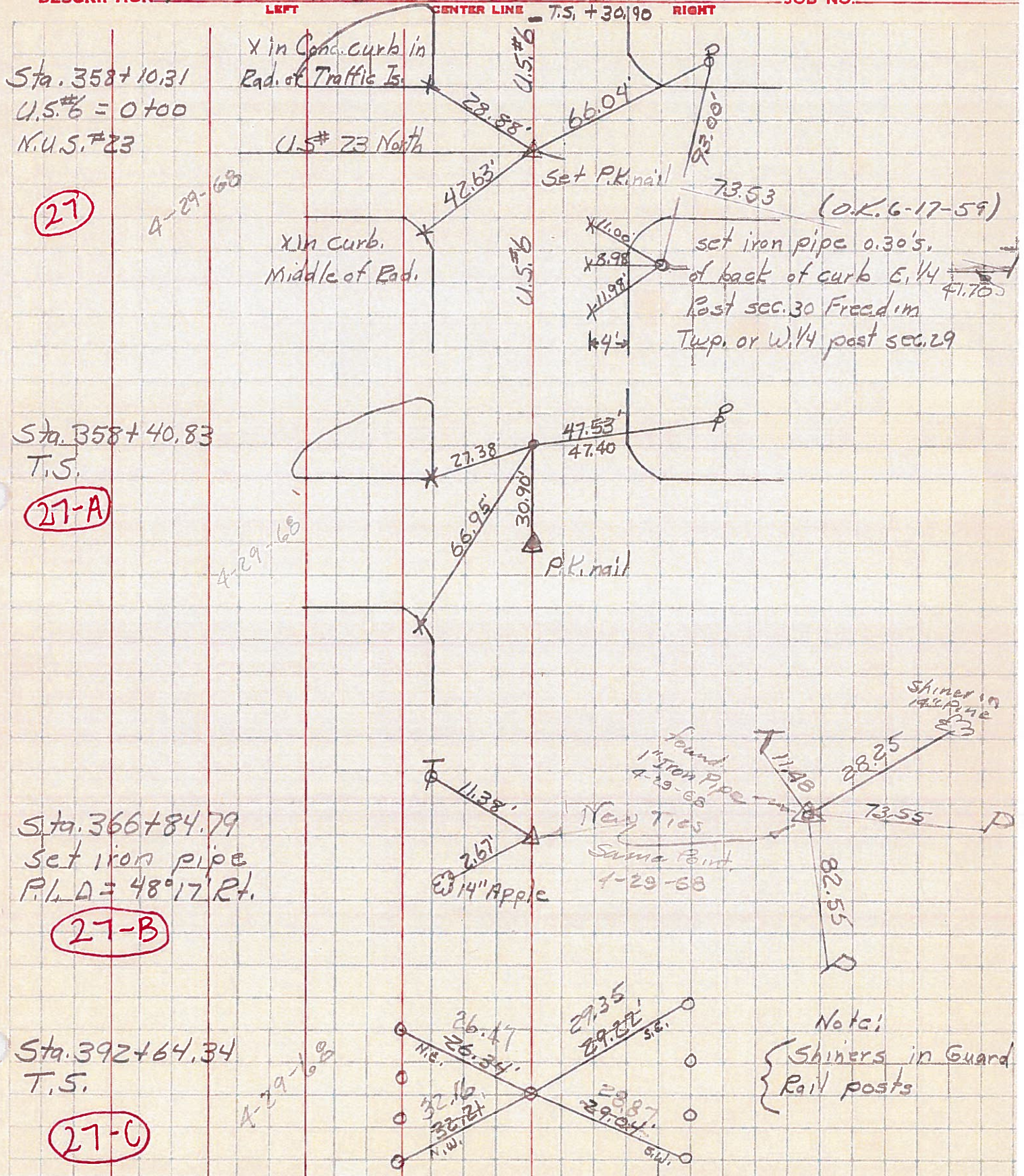
WEATHER

SEC.

TEMP.

DESCRIPTION New Rochester Rt #6 Relocation

JOB NO.



27

27-A

27-B

27-C