

O.D.O.T. DISTRICT 2 SURVEY OFFICE (USE ONLY)

PERSONNEL \_\_\_\_\_

REFERENCE NO. 27 C

SHEET 16 OF 35

NOTES NUHFER

DATE 7/6/11

ROUTE US 6

H.C. LUMBEREZER

WEATHER SUNNY

COUNTY WOOD

R.C. \_\_\_\_\_

TEMP. 82°

TOWNSHIP FREEDOM

DWG BY RHOADES

PID R/W, NO PID

SECTION 29

T 5 N R 12 E

TYPE MONUMENT MAG NAIL

ON SURFACE - ~~BELOW~~ ON

OFFSET CL PAVEMENT 0.8' ~~LT~~ : RT

- TO - EDGE PAVEMENT

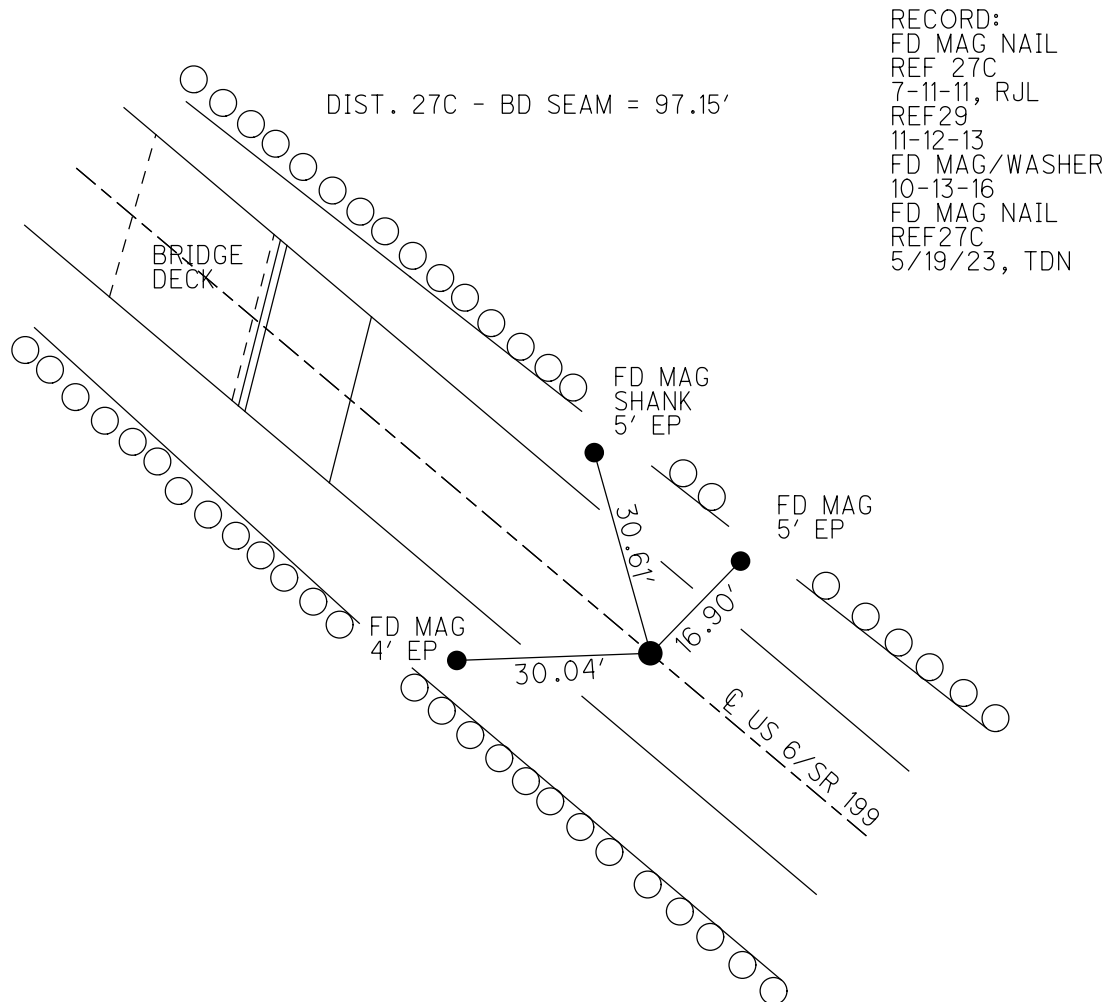
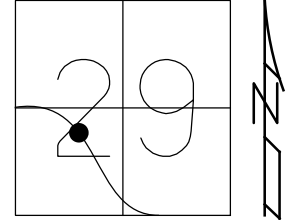
STATION: 1092+43.43

HORZ.DATUM: NAD83 2011

GEOID: NAVD88 2018

GRID: NORTHING: 617340.317

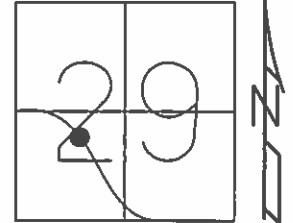
EASTING: 1693003.076



O.D.O.T. DISTRICT 2 SURVEY OFFICE (USE ONLY)

PERSONNEL \_\_\_\_\_ REFERENCE NO. 27 C SHEET 17 OF 22  
 NOTES NUHFER DATE 7-06-11 ROUTE US 6  
 H.C. LUMBEREZER WEATHER SUNNY COUNTY WOOD  
 R.C. \_\_\_\_\_ TEMP. 82°F TOWNSHIP FREEDOM  
 \_\_\_\_\_ SECTION 29  
 \_\_\_\_\_ T 5 N R 12 E

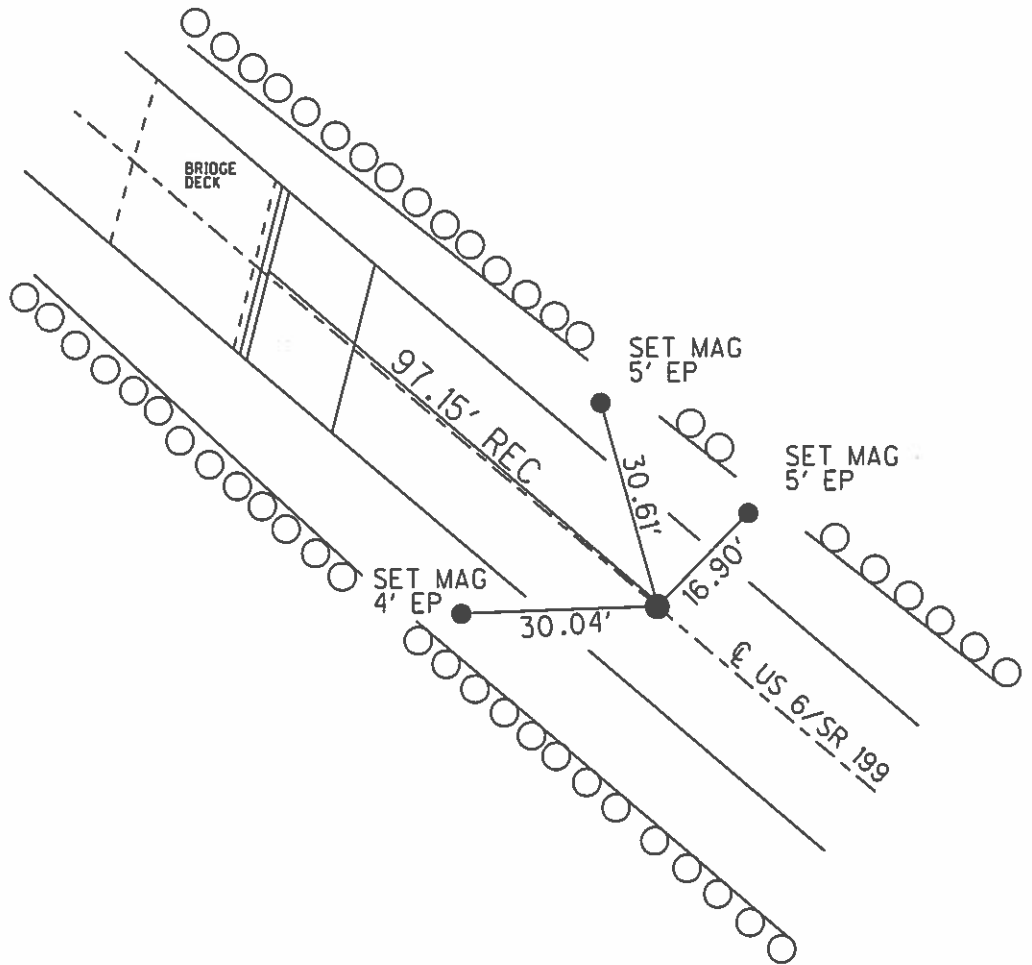
TYPE MONUMENT MAG NAIL  
 ON SURFACE - ~~BELOW~~ ON  
~~LEFT~~ - ☉ PAV'T - RIGHT 0.8'  
TO EDGE PAVEMENT  
 S.L.M. 1092+43.43  
 Grid: Northing: 617340.263 Easting: 1693003.104



RECORD:  
 GPS, REF 27C  
 7-11-11, RJL

GPS, REF 29  
 11-12-13

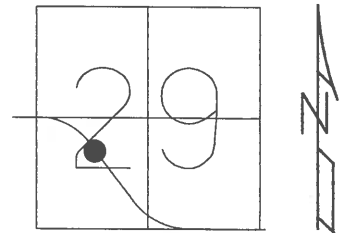
MAG WASHER  
 RESET BY  
 10-13-16



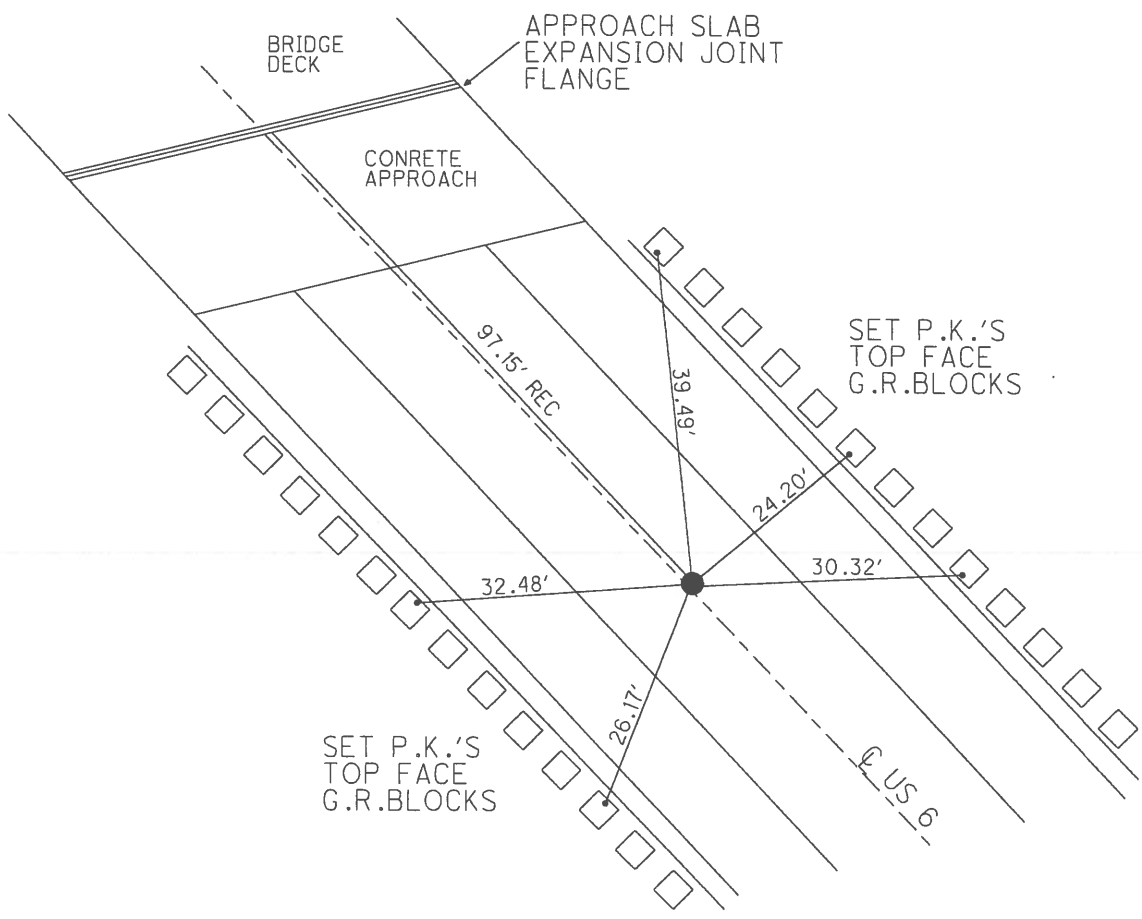
O.D.O.T. DISTRICT 2 SURVEY OFFICE

PERSONNEL \_\_\_\_\_ REFERENCE NO. 27 C SHEET 12 OF 15  
NOTES NUHFER DATE 7/06/11 ROUTE US 6  
H.C. LUMBREZER WEATHER SUNNY COUNTY WOOD  
R.C. \_\_\_\_\_ TEMP. 82° TOWNSHIP FREEDOM  
SECTION 29  
T 5 N R 12 E

TYPE MONUMENT MAG NAIL  
ON SURFACE - ~~BELOW~~ ON  
~~LEFT~~ - Q PAV'T - RIGHT 0.8'  
TO EDGE PAVEMENT  
S.L.M. 392+64.34, 23.3' WEST OF FACE CURB  
Grid: Northing: 617340.263 Easting: 1693003.104



GPS  
REF 27 C  
7/11/11, RJL



Q.D.O.T. DISTRICT 2 SURVEY OFFICE

12 of 15  
Sht. 27-0 of

County WOOD U.S. 6

Date MAY-15-68

Township FREEDOM

Weather PT. CLOUDY

Section 29

Temp. 70°

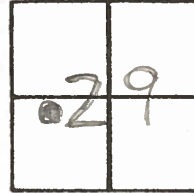
TSN, RIZE

Personnel BURNSIDE

BOWERS

HOLCOMBE

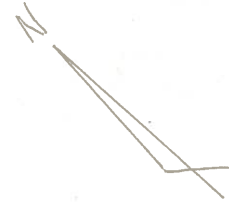
KERN



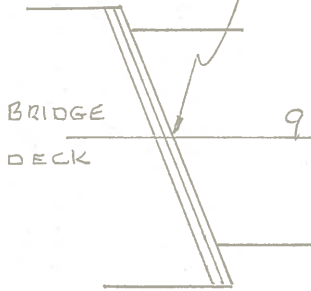
#270

STA. 392+64.34

T.S.

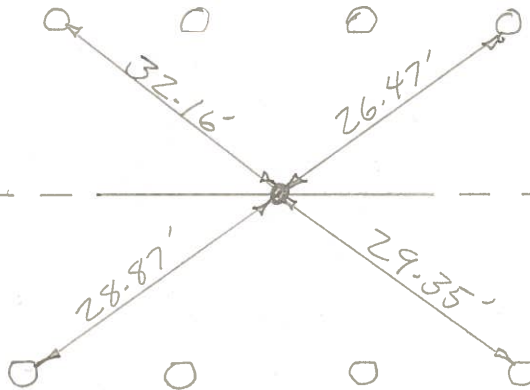


APPROACH SLAB  
EXPANSION JOINT  
FLANGE



BRIDGE  
DECK

97.15'



U.S. 6

PERSONNEL TITLE PERSONNEL TITLE

COUNTY Wood

DATE May 15, 1968

S. R. 45#6

WEATHER Pt. Cloudy

SEC.

TEMP. +70°

DESCRIPTION Tie to Control Points

JOB NO.

LEFT

CENTER LINE

RIGHT

<p>COPIED</p> <p><b>#27C</b></p> <p>Sta. 392+64.34 T.S.</p>	<p>Approach Slab Expansion Joint Abutment</p>		<p>Shiners in Guard Rail Post on Rt. &amp; Lt. Sides of Roadway.</p> <p>4-29-68</p>
<p>COPIED</p> <p><b>#27B</b></p> <p>Sta. 366+84.79 Iron Pipe PI. Δ = 48°17' R</p>	<p>Shiner</p>		<p>Shiner in 14" Pine</p> <p>Shiner</p> <p>Shiner</p> <p>4-29-68</p>
<p>COPIED</p> <p><b>#27A</b></p> <p>Sta. 358+40.83 T.S.</p> <p>Sta. 358+10.3 U5#6 = 0+00 U5#23 North.</p>	<p>Cross in Curb</p> <p>U5#23 North 199</p> <p>Cross in Curb.</p>		<p>Castle Road South</p> <p>Shiner</p> <p>Shiner</p> <p>4-29-68</p>



PERSONNEL TITLE PERSONNEL TITLE

COUNTY Wood

DATE 12-10-54

S.R. U.S. #6

WEATHER

SEC

TEMP.

DESCRIPTION New Rochester Rt #6 Relocation

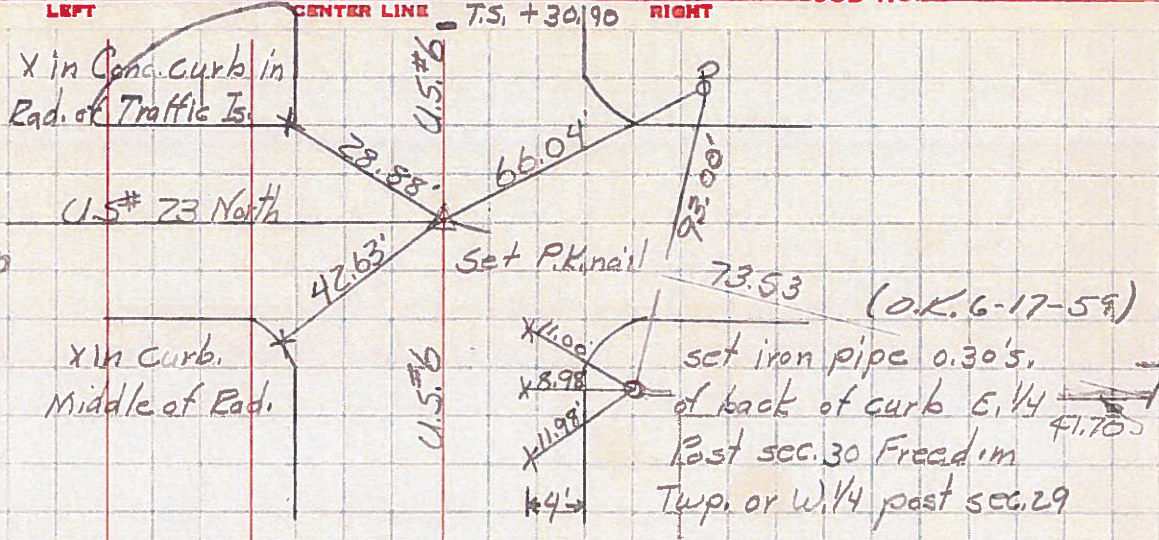
JOB NO.

LEFT CENTER LINE T.S. +30190 RIGHT

Sta. 358+10.31  
U.S. #6 = 0+00  
N.U.S. #23

27

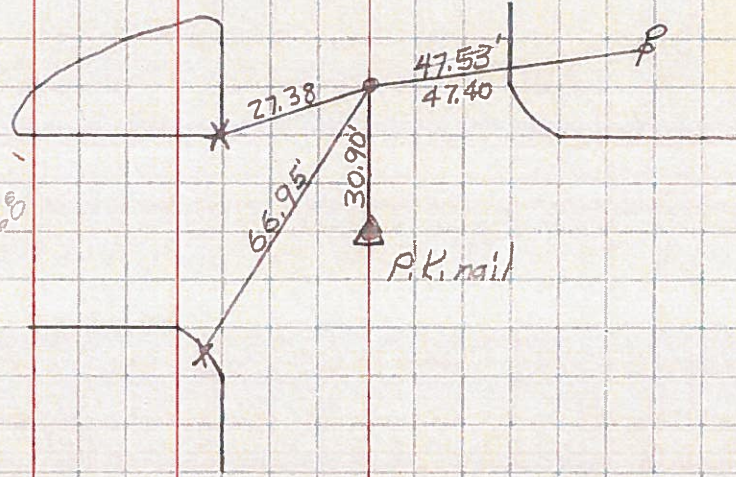
4-29-68



Sta. 358+40.83  
T.S.

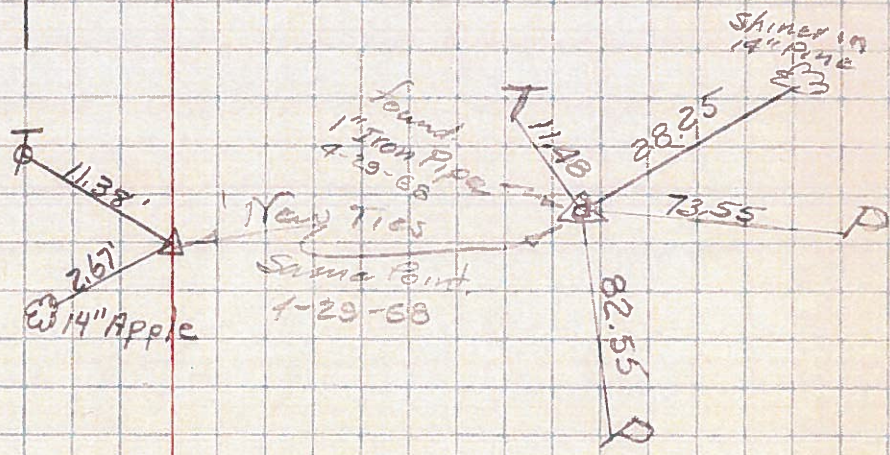
27-A

4-29-68



Sta. 366+84.79  
Set iron pipe  
P.L.A = 48°17' Rt.

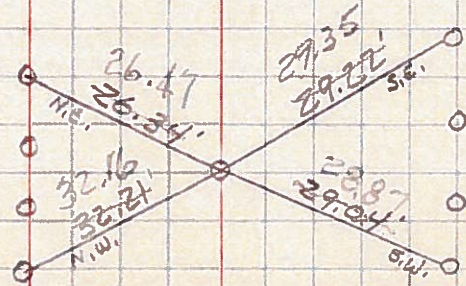
27-B



Sta. 392+64.34  
T.S.

27-C

4-29-68



Note: Shiners in Guard Rail posts