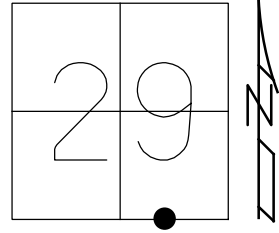


O.D.O.T. DISTRICT 2 SURVEY OFFICE (USE ONLY)

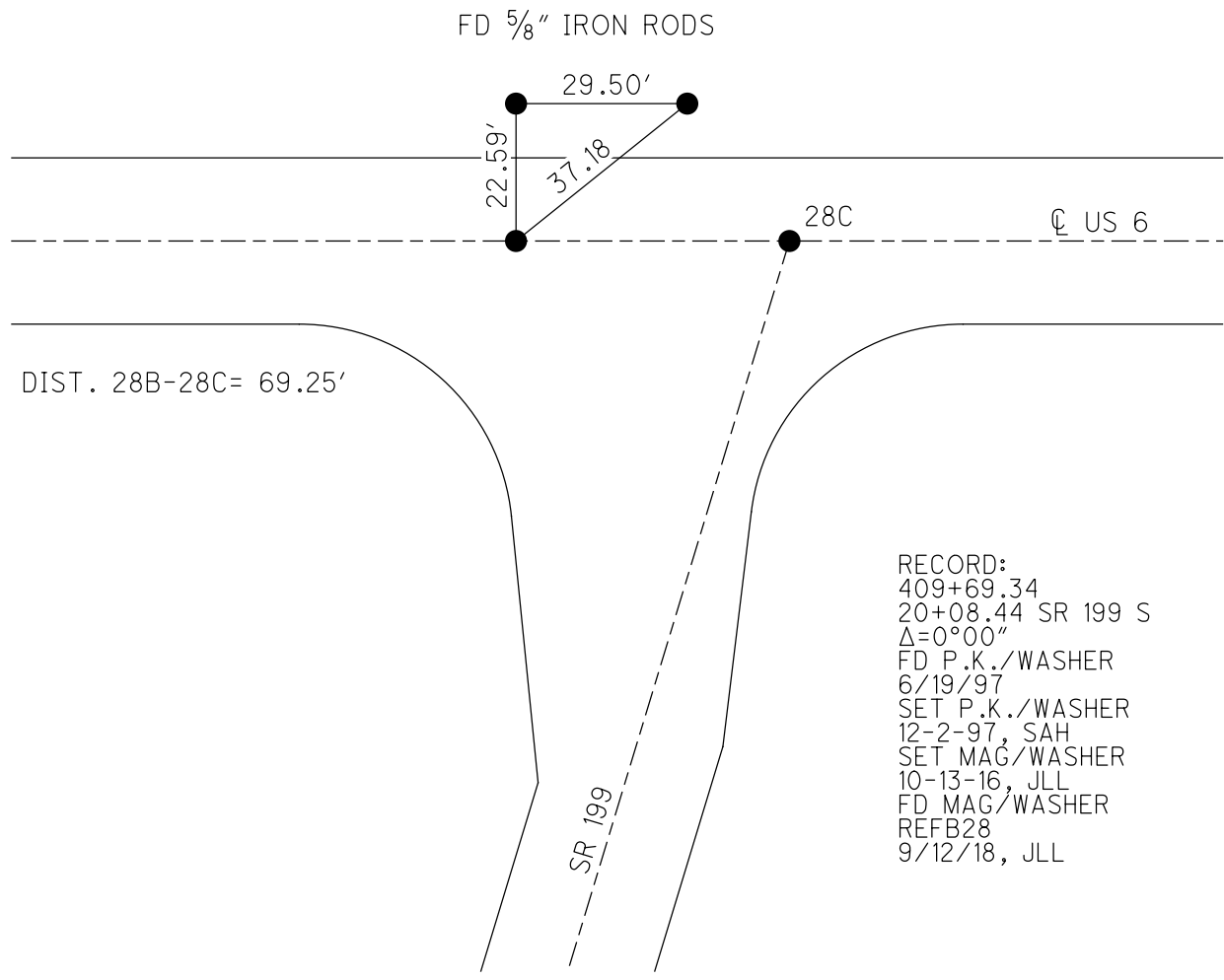
PERSONNEL _____ REFERENCE NO. 28 B SHEET 32 OF 34
 NOTES LEU DATE 9/12/18 ROUTE US 6
 H.C. LEU WEATHER CLOUDY COUNTY WOOD
 R.C. MILLER TEMP. 65° TOWNSHIP FREEDOM
 DWG BY NIESE PID 101242 SECTION 29
 T 5 N R 12 E

TYPE MONUMENT MAG/WASHER
 ON SURFACE - BELOW ON
 OFFSET ☉ PAVEMENT ON LT : RT
12' TO LT EDGE PAVEMENT
 STATION: 1108+10.75



HORIZ.DATUM: NAD83 2011 GEOID: NAVD88 2012A
 GRID: NORTHING: 616711.415 EASTING: 1694436.323

NOTE: REF 47A SR 199

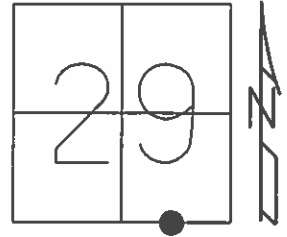


RECORD:
 409+69.34
 20+08.44 SR 199 S
 Δ=0°00"
 FD P.K./WASHER
 6/19/97
 SET P.K./WASHER
 12-2-97, SAH
 SET MAG/WASHER
 10-13-16, JLL
 FD MAG/WASHER
 REFB28
 9/12/18, JLL

O.D.O.T. DISTRICT 2 SURVEY OFFICE (USE ONLY)

PERSONNEL _____ REFERENCE NO. 28 B SHEET 20 OF 22
 NOTES HUSS DATE 6-19-97 ROUTE US 6
 H.C. CORDES WEATHER CLOUDY COUNTY WOOD
 R.C. VAN DUSEN TEMP. 70°F TOWNSHIP FREEDOM
 _____ SECTION 29
 _____ T 5 N R 12 E

TYPE MONUMENT PK/WASHER
 ON SURFACE - ~~BELOW~~ ON
 LEFT - ☐ PAV'T - RIGHT ON
12.0' TO LT EDGE PAVEMENT
 S.L.M. 1108+84.55



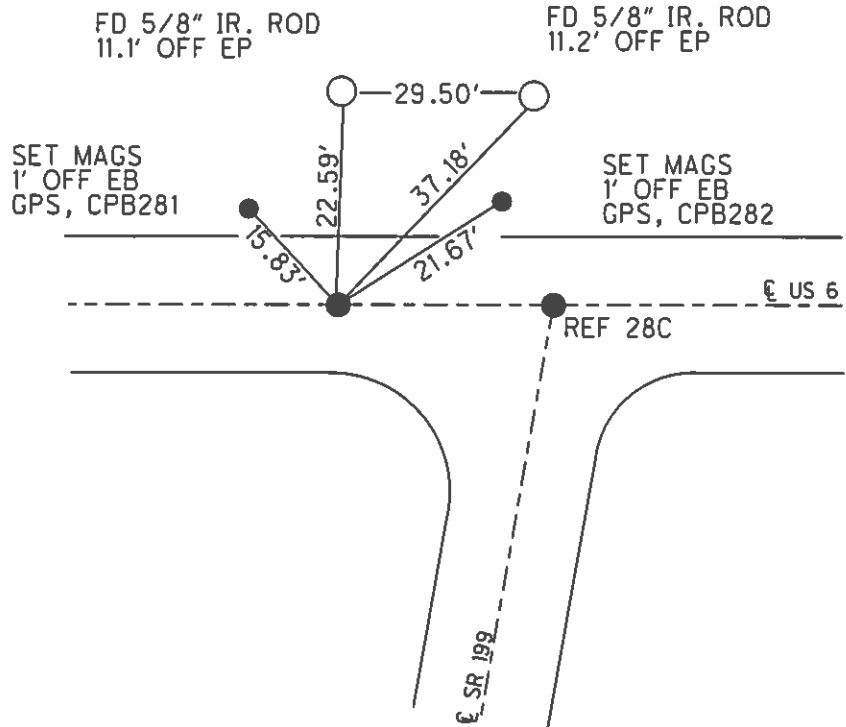
Grid: Northing: 616711.4151 Easting: 1694436.3233

RECORD:
 409+69.340 US 6
 20+08.44 SR 199 SOUTH
 $\Delta=0^{\circ}00''$

NOTE: DIST. BETWEEN REF 28B-REF 28C= 69.28'

SET PK/WASHER
 12-2-97, SAH

SET MAG/WASHER
 10-13-16, JLL



O.D.O.T. DISTRICT 2 SURVEY OFFICE (USE ONLY)

PERSONNEL _____

REFERENCE NO. 28 B

SHEET 1 OF 2

NOTES HUSS

DATE 06-19-97

ROUTE US6 & SR 199

H.C. CORDES

WEATHER CLOUDY

COUNTY WOOD

R.C. VAN DUSEN

TEMP. 70° F

TOWNSHIP FREEDOM

SECTION 29

T 5 N R 12 E

TYPE MONUMENT _____ PK/WASHER _____

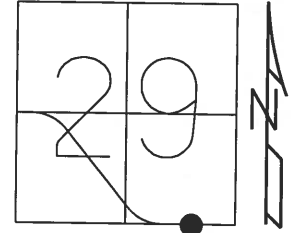
ON SURFACE - ~~BELOW~~ ON _____

~~LEFT~~ - CL PAV'T - ~~RIGHT~~ ON _____

12.0' TO LT. EDGE PAVEMENT

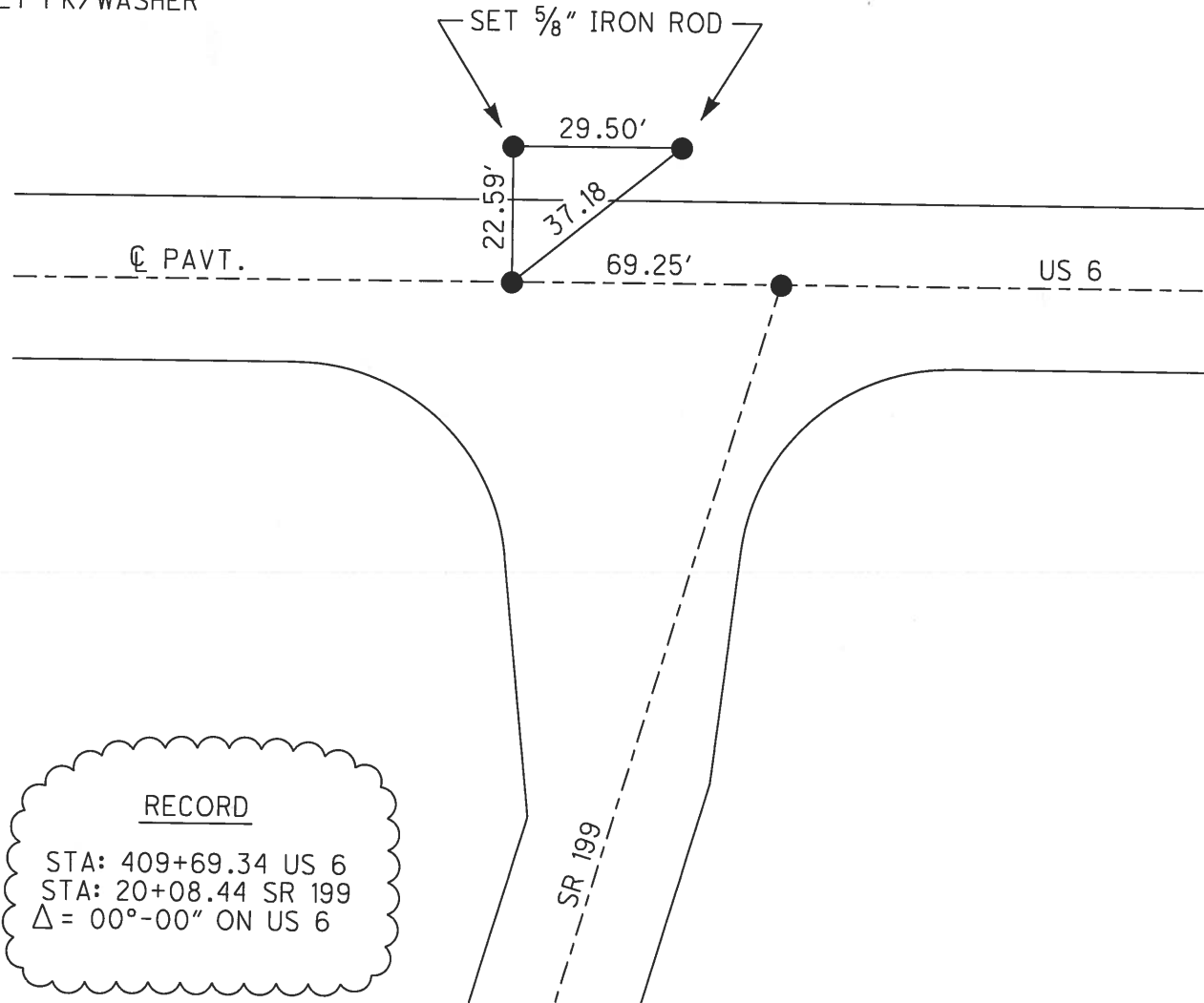
S.L.M. _____

Grid: Northing: _____ Easting: _____



RECORD

12-02-97 SAH
SET PK/WASHER



RECORD

STA: 409+69.34 US 6
STA: 20+08.44 SR 199
 $\Delta = 00^\circ - 00''$ ON US 6

O.D.O.T. DISTRICT 2 SURVEY OFFICE

PERSONNEL

REFERENCE NO. 28B, 28C SHEET 15 OF 15

NOTES Huss

H.C. CORDES

R.C. VAN DUSEN

DATE 6-19-97

WEATHER Cloudy

TEMP. +70° F

ROUTE US 6 FSR 199

COUNTY WOOD

TOWNSHIP FREEDOM

SECTION 29

T. 5 N R. 12 E

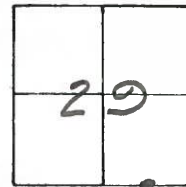
TYPE MONUMENT PK^s/WASHERS

ON SURFACE - BELOW YES

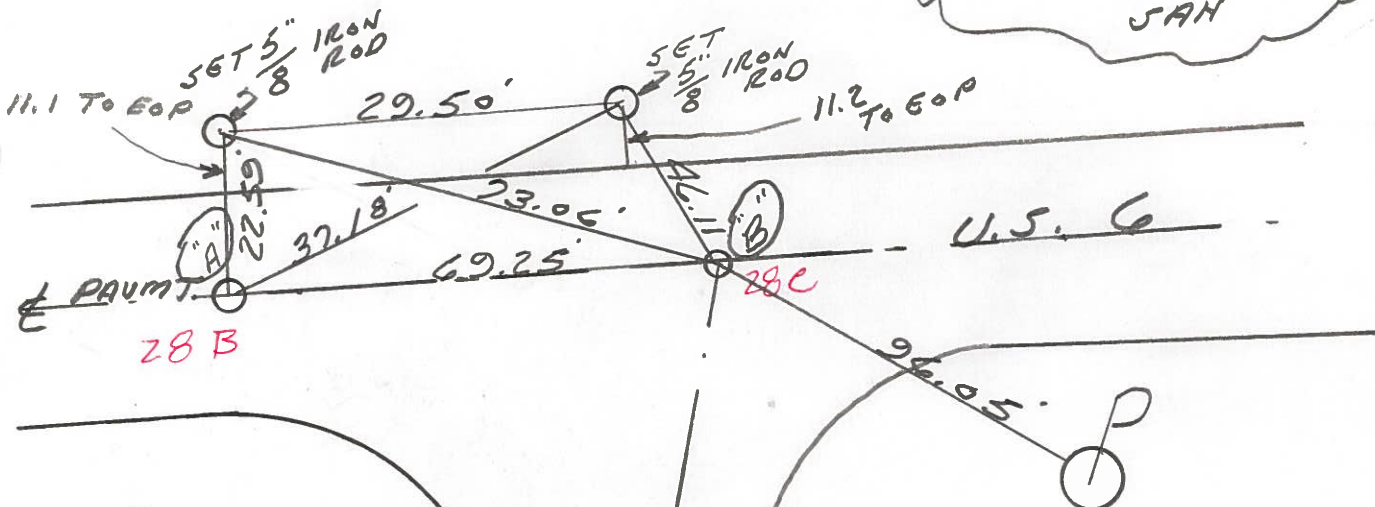
LEFT-CL PAV'T. - RIGHT YES PT. A PT. B 0.4 LT. CL

12.0 TO LT. EDGE PAVEMENT = PT. A

S.L.M. (A) = 33+849.14 (B) = 33+870.25 (Plan Sta) PT. B = 11.7 LT. 6095



SET PK^s/WASHERS
12-2-97
JAH



RECORD:
409+69.34 U.S. 6:
20+08.44 FSR 199 SOUTH
Δ = 0°-00" ON U.S. 6

FSR 199

O.D.O.T. DISTRICT 2 SURVEY OFFICE

PERSONNEL

REFERENCE NO. 28-A

SHEET OF

NOTES BARNHISEL

H.C. SOCKMAN

R.C. LoehBKE

LUCE

DATE May 6, 1987

WEATHER SUNNY

TEMP. +65°

ROUTE U.S. 6 + S.R. 199

COUNTY WOOD

TOWNSHIP FREEDOM

SECTION 29

T. 5 N. R. 12 E

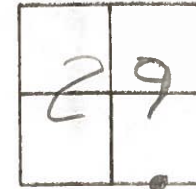
28-B

28-C

TYPE MONUMENT Both Sm RR Spk's

ON SURFACE - BELOW YES

LEFT - & PAV'T. - RIGHT Pt "A+B" 1/2 of 6 - Pt "B" on E 199



Pt "A" 12.0
Lt
Pt "B" 10.8
Lt

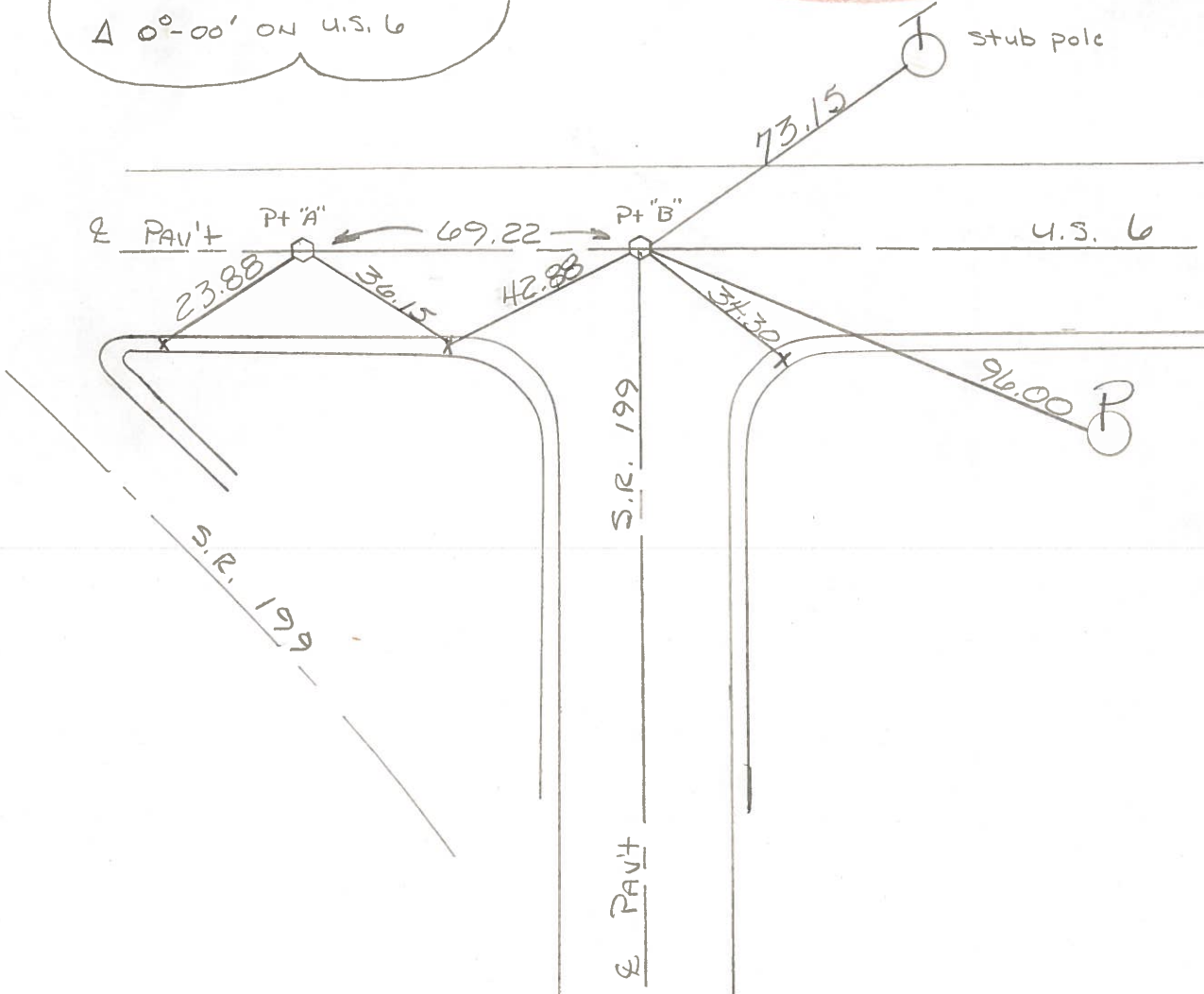
EDGE PAVEMENT

S.L.M. |||| +23 - (Pt. "B")

RECORD:

409+69.34 U.S. 6 =
20+08.44 SR 199 South.
Δ 0°-00' ON U.S. 6

Set Sm RR Spk's
6-9-87
YMOB



County Wood ~~SR~~ US 6

Date 3-20-85

Township FREEDOM

Weather CLEAR

Section 29

Temp. 40°

TSN, R12E

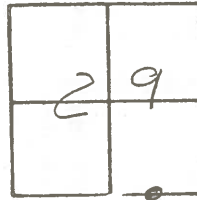
Personnel Loffman

28-B

LOEHRKE H.C.

BARNHISEL R.C.

28-C

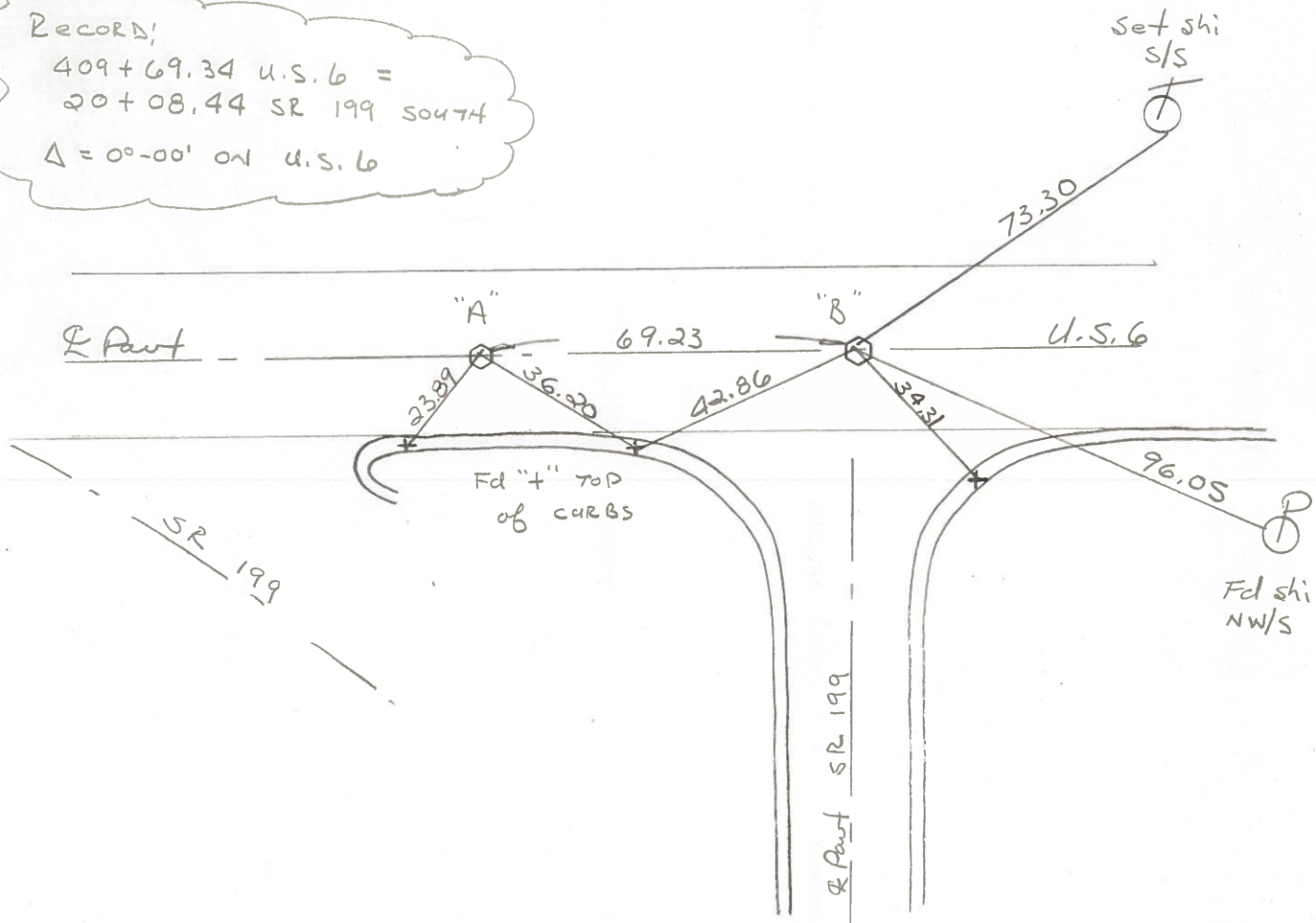


#28-A

"A" = Fd small R.R. spk @ surface
 1.0' Lt of R Pavt, US 6
 12.0' to Lt. EP.

"B" = Fd small R.R. spk @ surface S.L.M. = 1111 + 51
 1.0' Lt. of R Pavt, US 6
 10.8' to Lt. EP.

RECORD:
 409 + 69.34 U.S. 6 =
 20 + 08.44 SR 199 50474
 $\Delta = 00-00'$ ON U.S. 6



Q.D.O.T. DISTRICT 2 SURVEY OFFICE

Sht. 28A of

County WOOD U.S. 6

Date 5-25-72

Township FREEDOM

Weather CLEAR

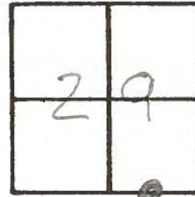
Section 29

Temp. 78°

T5N, R12E

Personnel BURNSIDE

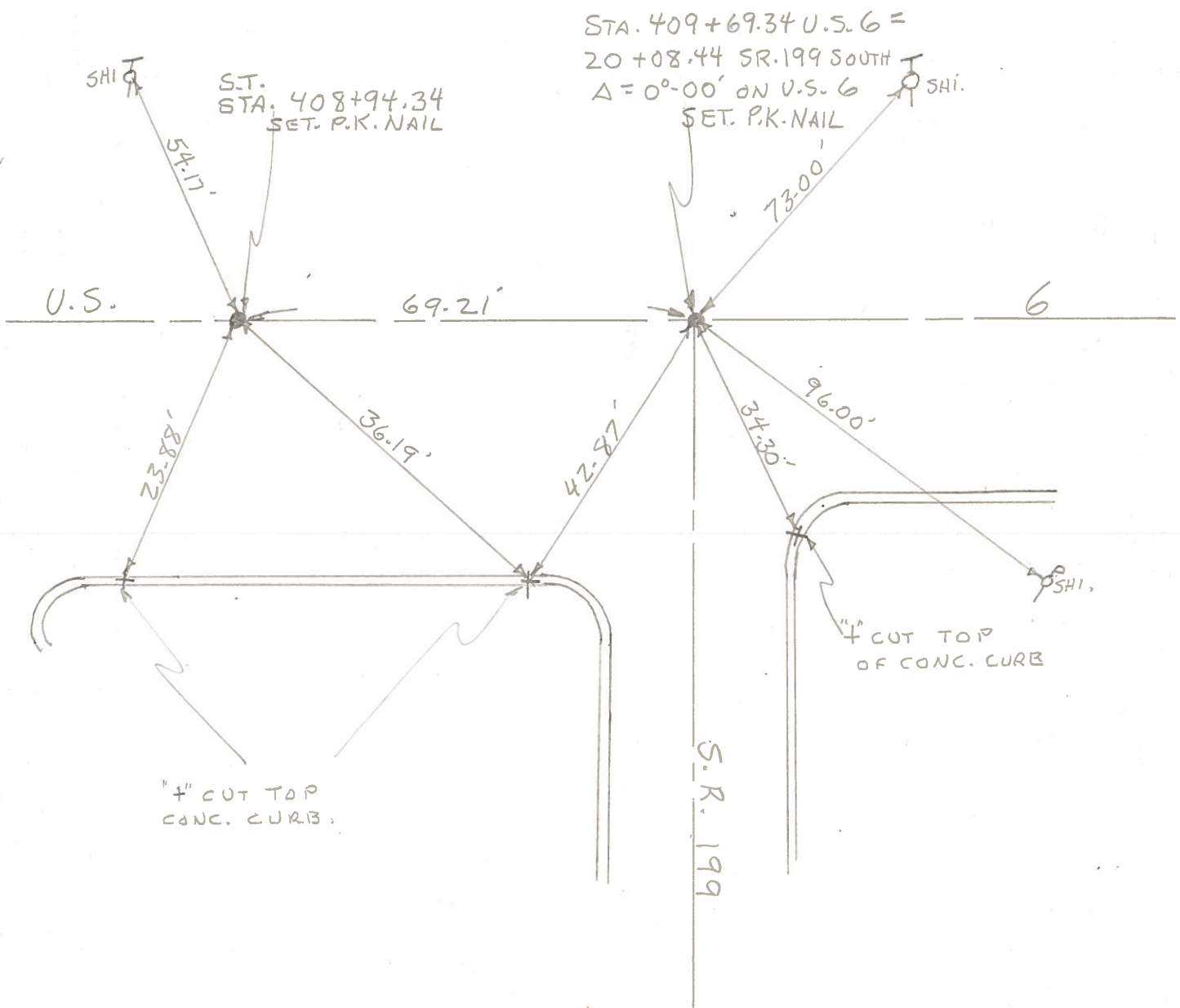
SMITH



28-A

28-B

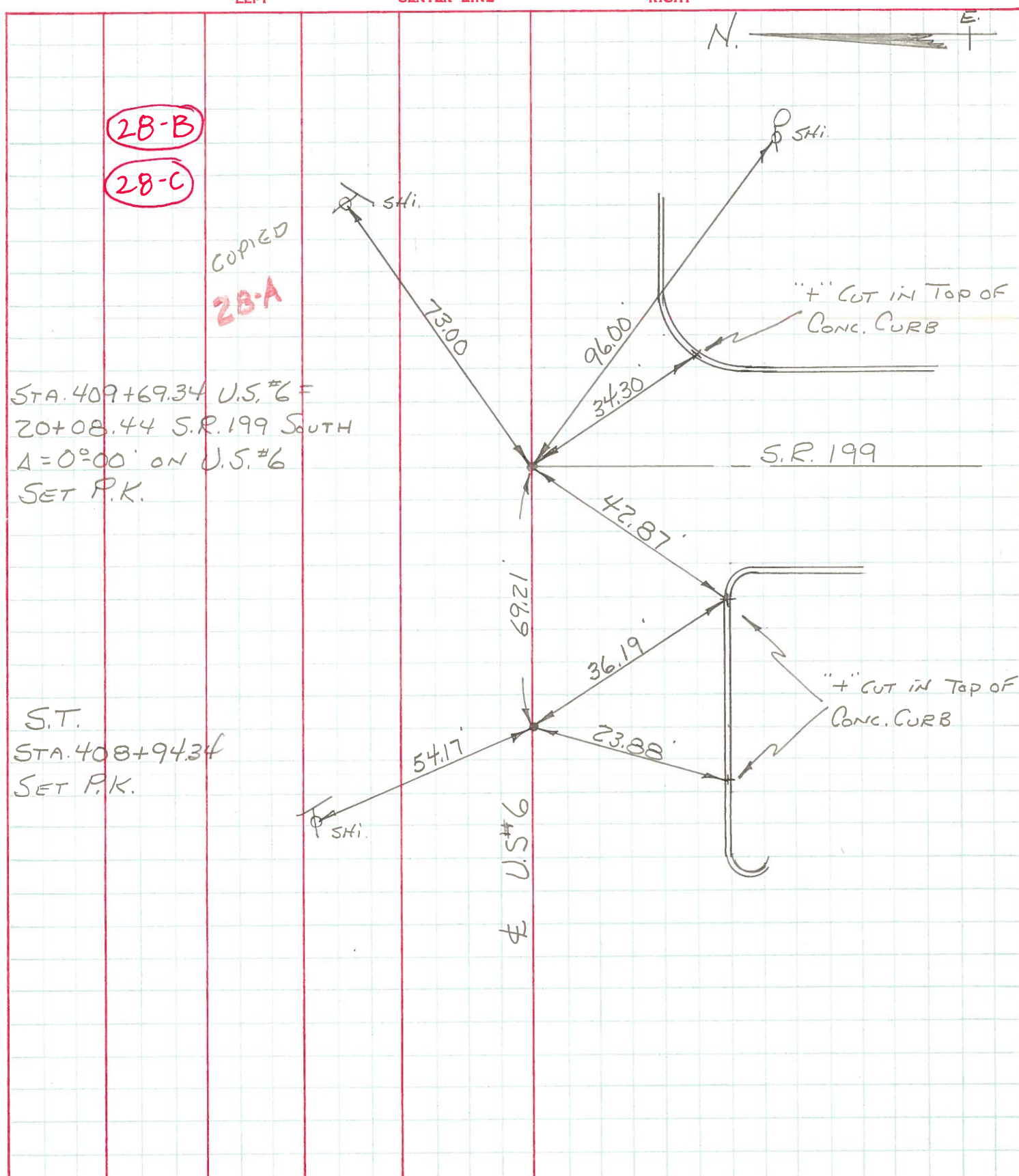
28-C



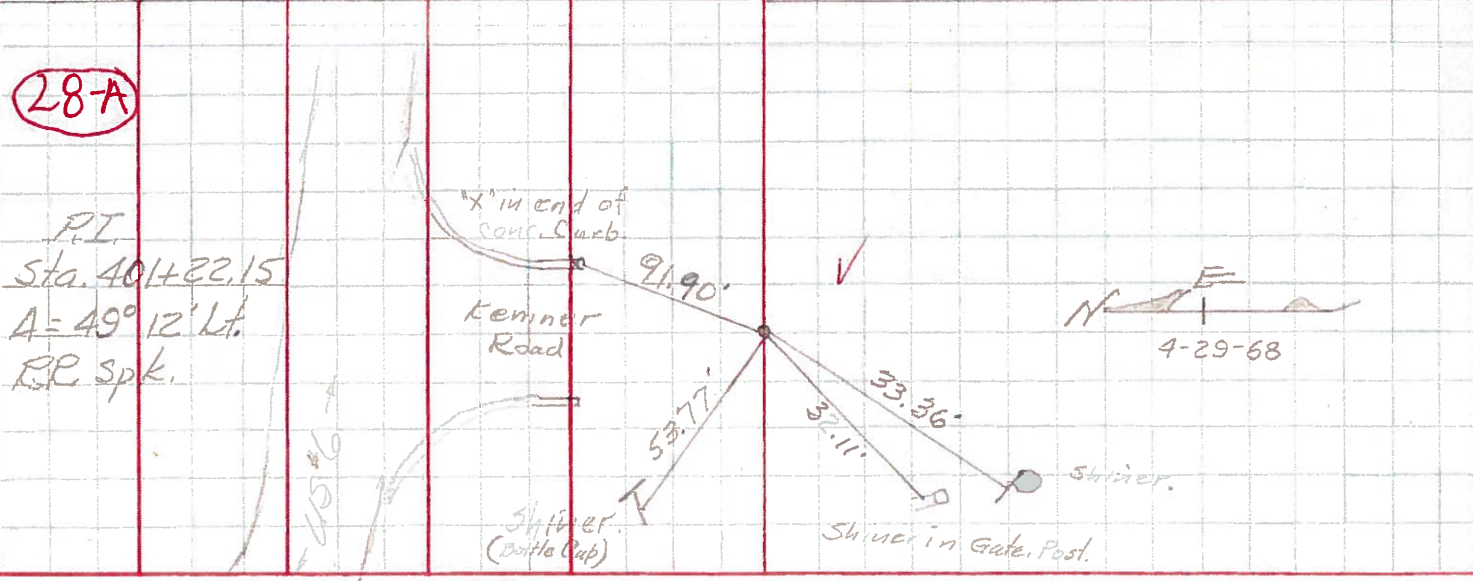
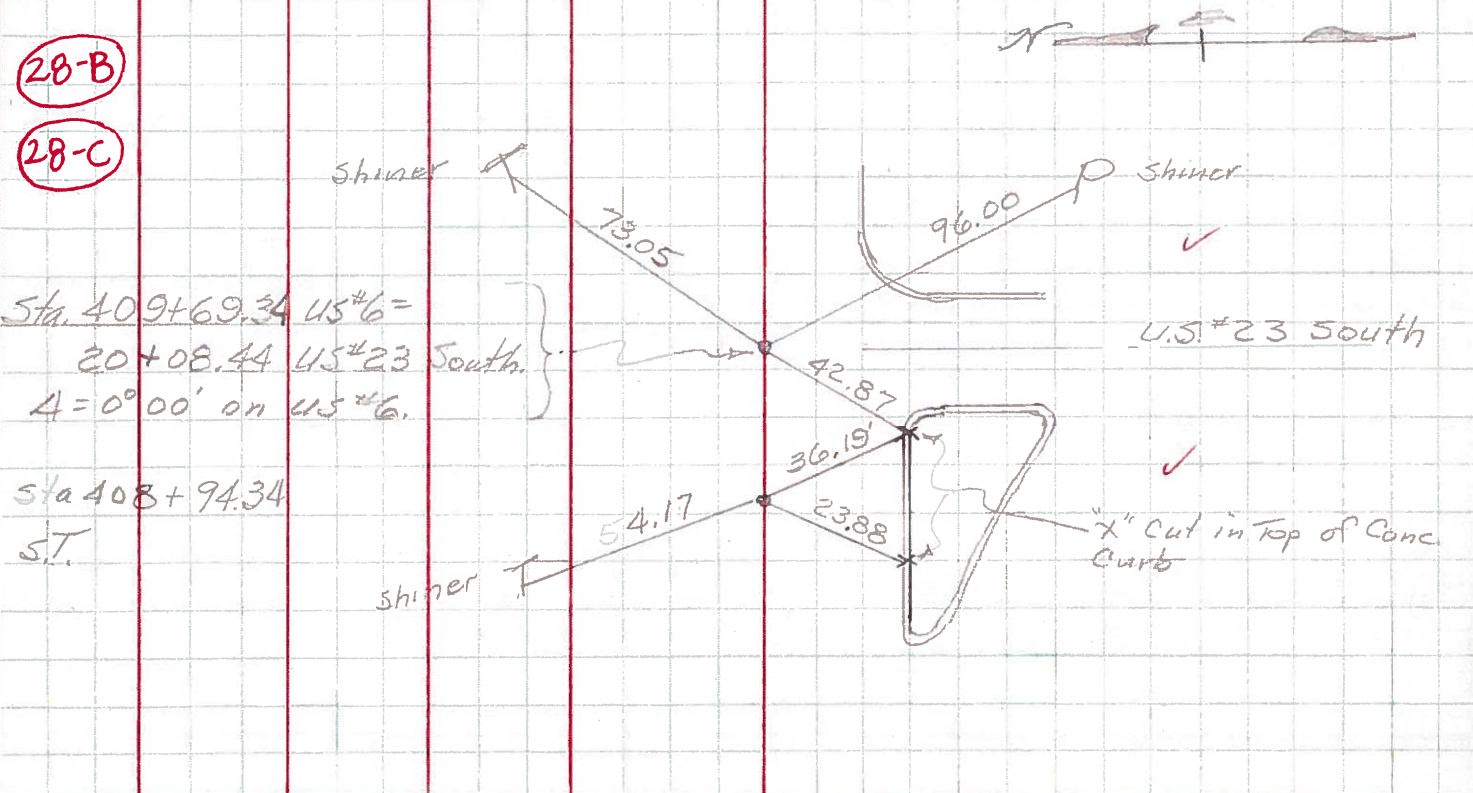
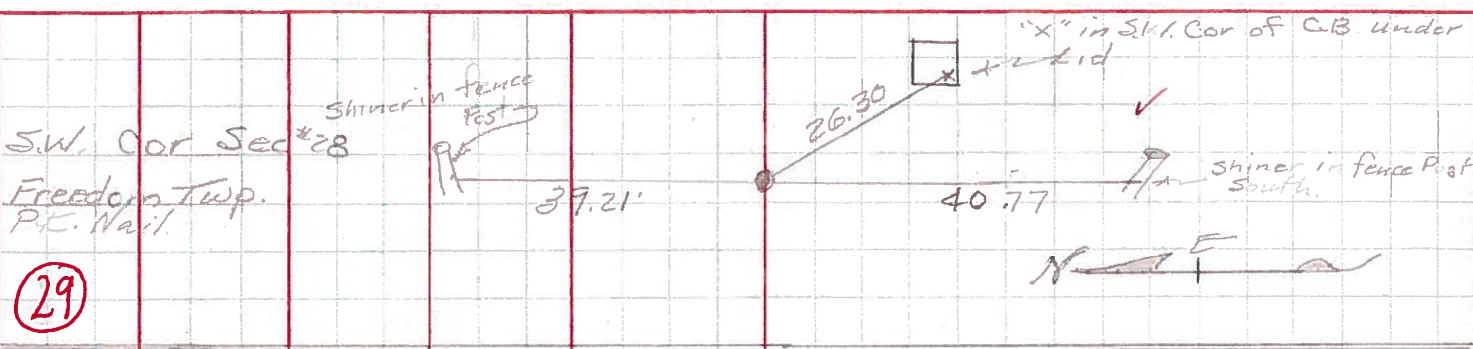
| PERSONNEL | TITLE | PERSONNEL | TITLE |
|-----------|-------|-----------|-------|
| BURNSIDE | | | |
| SMITH | | | |

COUNTY Wood DATE 5-25-72
 S. R. U.S. 6 & S.R. 199 WEATHER CLEAR
 SEC. _____ TEMP. +72°

DESCRIPTION BEGIN POINT CHECK - EAST- JOB NO. _____



PERSONNEL TITLE PERSONNEL TITLE COUNTY Wood DATE May 15, 1968
Morrison _____ Bowers _____ S. R. 45#6 WEATHER pt. Cloudy
Holcombe _____ Kern _____ SEC. _____ TEMP. +70°
 DESCRIPTION Ties to Control Points. JOB NO. _____



PERSONNEL TITLE PERSONNEL TITLE

COUNTY Wood

DATE 12-10-54

S.R. U.S.#6

WEATHER

SEC.

TEMP.

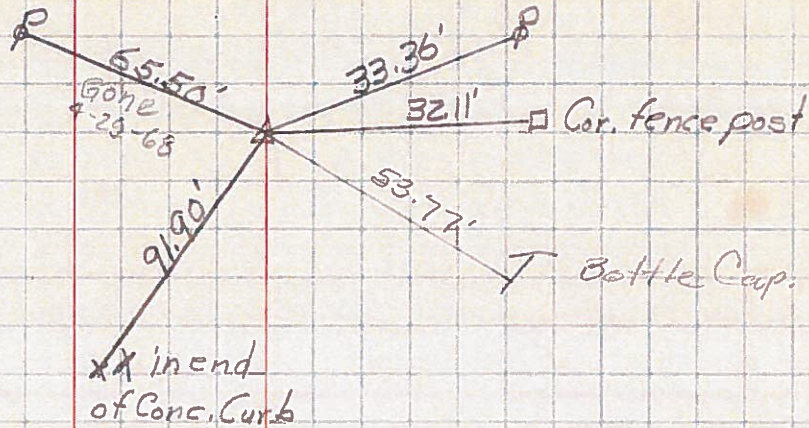
DESCRIPTION New Rochester Pt.#6 Relocation

JOB NO.

Sta. 401+22.15
Δ = 49° 12' Lt.
R.P. Spike

4-29-1968

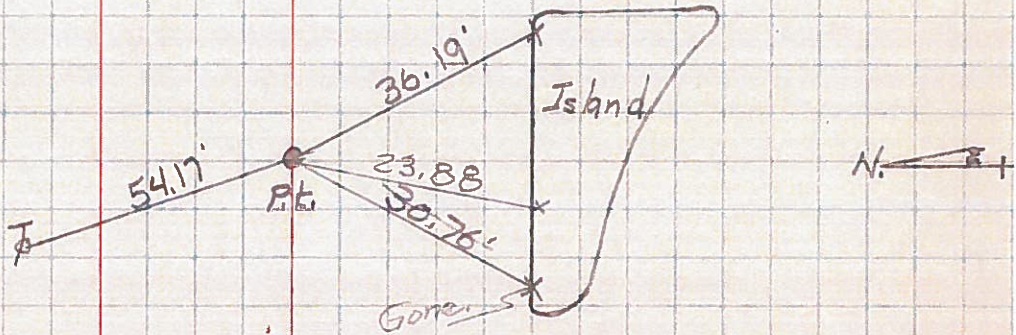
28-A



Sta. 408+94.34
S.T.

4-29-1968

28-B



Sta. 409+69.34 U.S.#6
P.I. 20+08.44 U.S.#23
Δ = 0°-0'

U.S.#6

4-29-68
73.05

P.K. nail

96.03
96.18
96.00

CK. 5-4-60
Michaeli
Work done 4-29-68
Followed into work

28-C

