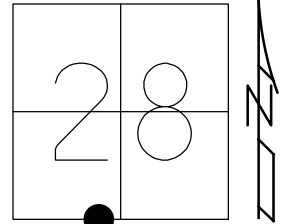


O.D.O.T. DISTRICT 2 SURVEY OFFICE (USE ONLY)

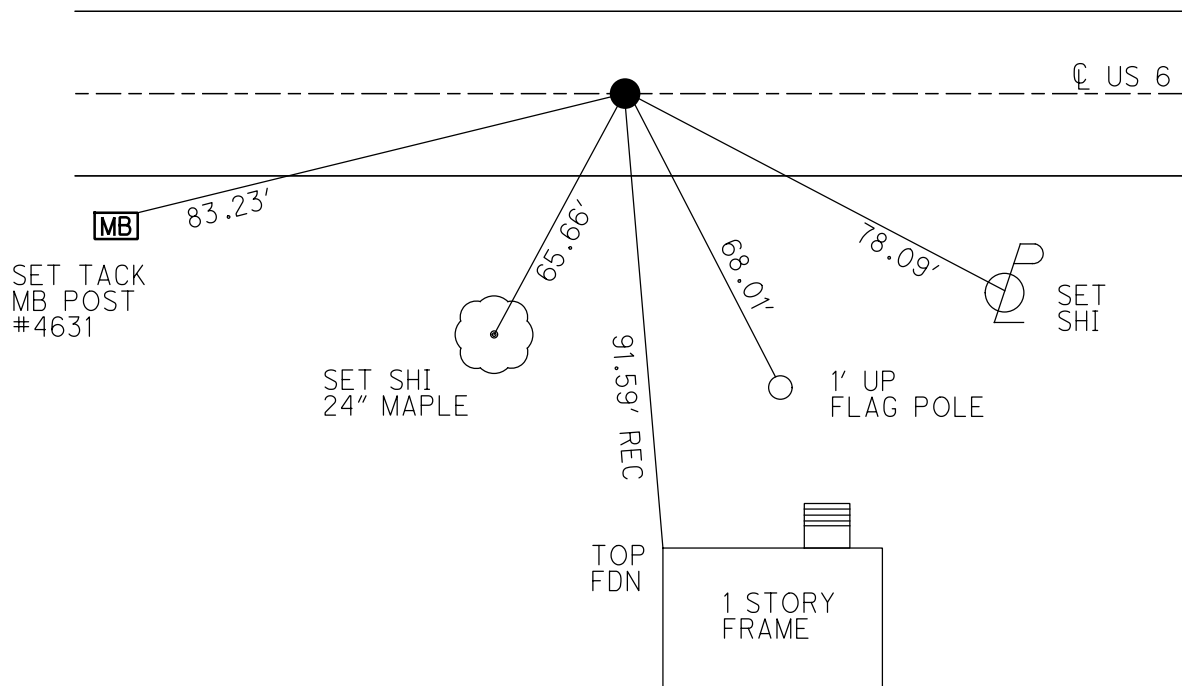
PERSONNEL \_\_\_\_\_ REFERENCE NO. 29 A SHEET 1 OF 14  
 NOTES RHOADES DATE 6/26/20 ROUTE US 6  
 H.C. LEU WEATHER SUNNY COUNTY WOOD  
 R.C. GARRETT TEMP. 79° TOWNSHIP FREEDOM  
 \_\_\_\_\_ MAHLER \_\_\_\_\_ SECTION 28  
 DWG BY NIESE PID 101242 T 5 N R 12 E

TYPE MONUMENT SM.R.R.SPIKE  
~~ON SURFACE~~ - BELOW 3 1/2"  
 OFFSET  $\odot$  PAVEMENT ON LT : RT  
12.3' TO LT EDGE PAVEMENT  
 STATION: 1139+72.98



HORIZ.DATUM: NAD83 2011 GEOID: NAVD88 2012A  
 GRID: NORTHING: 616758.965 EASTING: 1697598.157

RECORD:  
 STA. 457+38.63  
 FD SM.R.R.SPIKE  
 7/19/94, CL  
 SET P.K./WASHER  
 10/3/94  
 FD P.K./WASHER  
 9/12/18, JLL  
 6/26/20, JLL  
 SET MAG/WASHER  
 9/29/20, JFO





County Wood S.R. 456

Date 3-20-85

Township FREEDOM

Weather CLEAR

Section 28

Temp. 40°

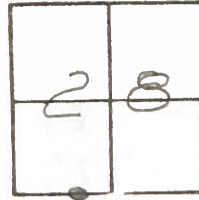
TSN, R12E

Personnel Hoffman

LOSTHREKE H.C.

BARNHISEL R.C.

#29-A

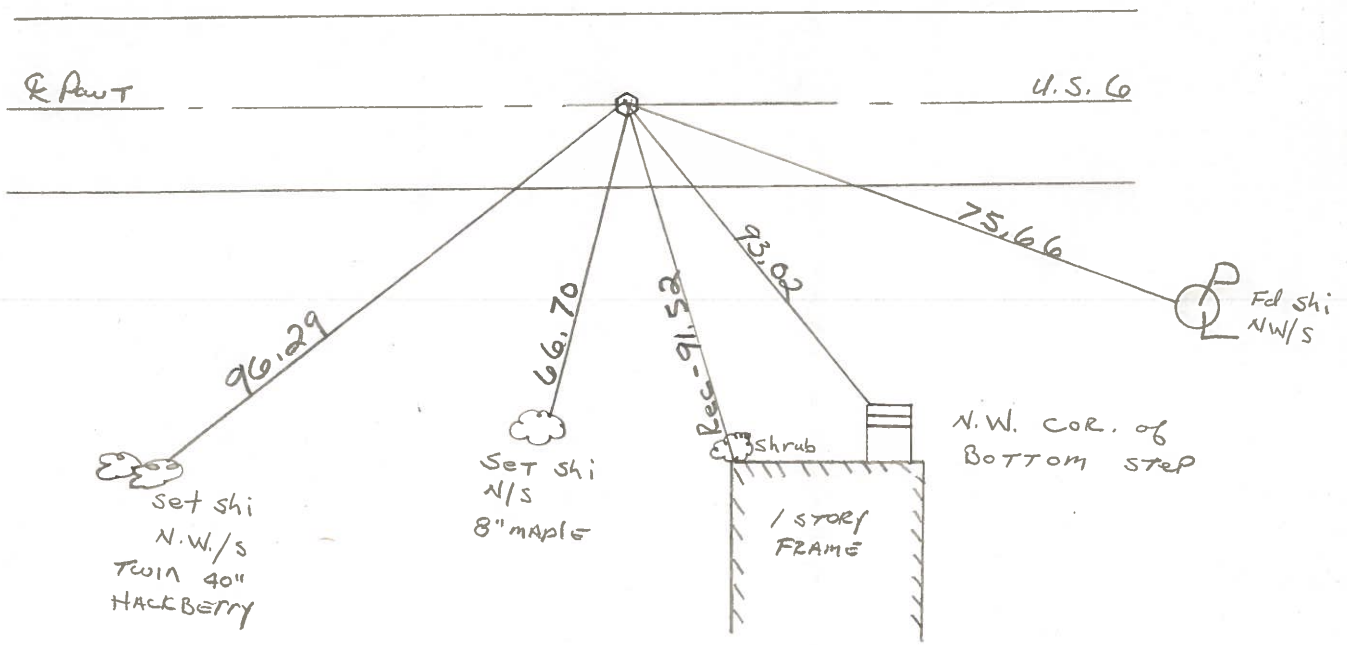


Fd small R.R. SPK @ surface  
 ON & PAWT  
 10.5' TO RT. EP

SLM = 1142+46

Set small R.R. SPK  
 8-30-85 SWH

Record:  
 457+38.63  
 TOP OF HILL



Q.D.O.T. DISTRICT 2 SURVEY OFFICE

Sht. 29-A of

County WOOD U.S. 6

Date 5-25-72

Township FREEDOM

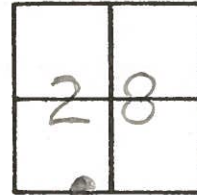
Weather CLEAR

Section 28

Temp. 78°

T5N, R12E

Personnel BURNSIDE  
SMITH

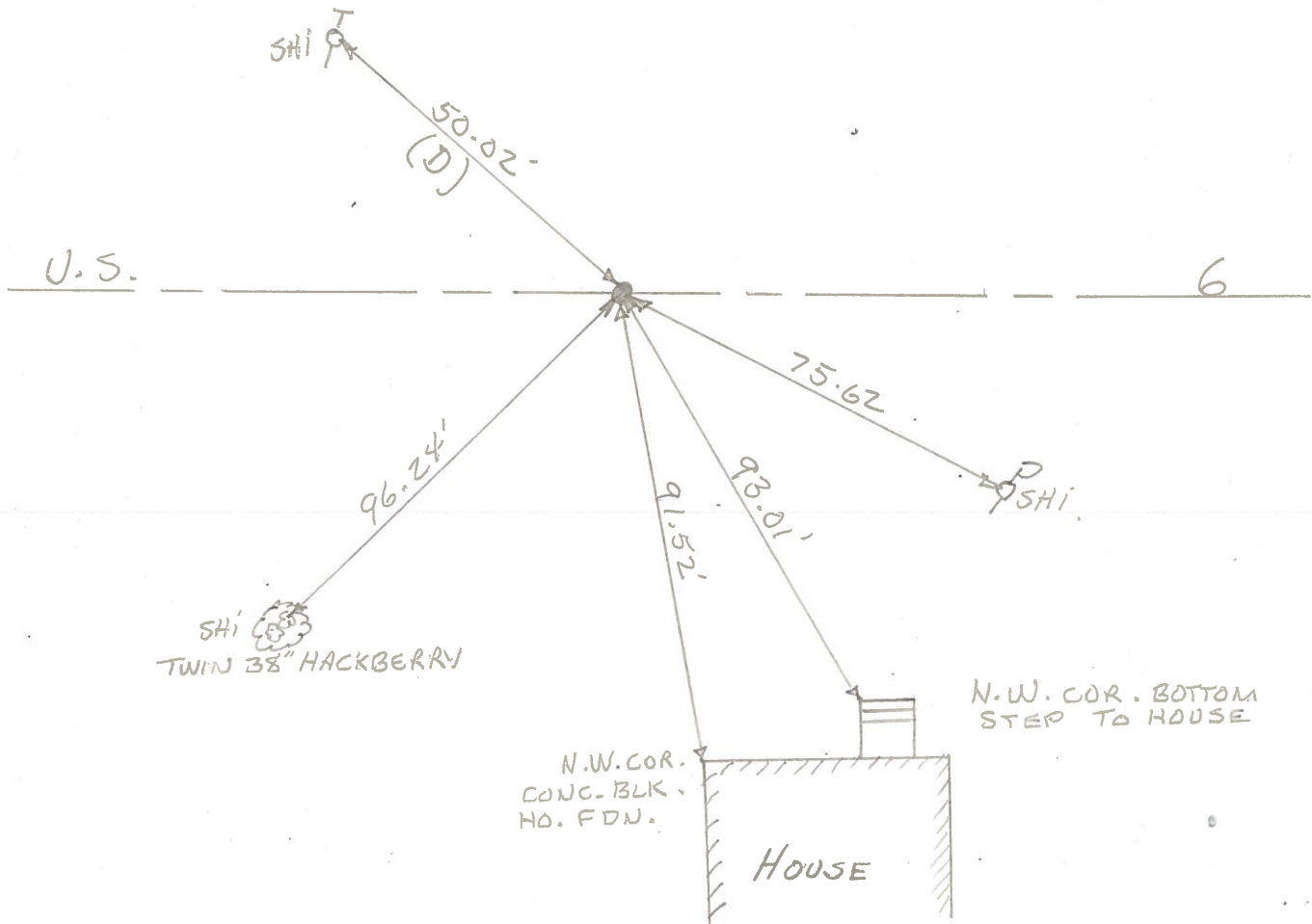


# 29-A

STA. 457+38.63

P.K. NAIL

(TOP OF HILL)



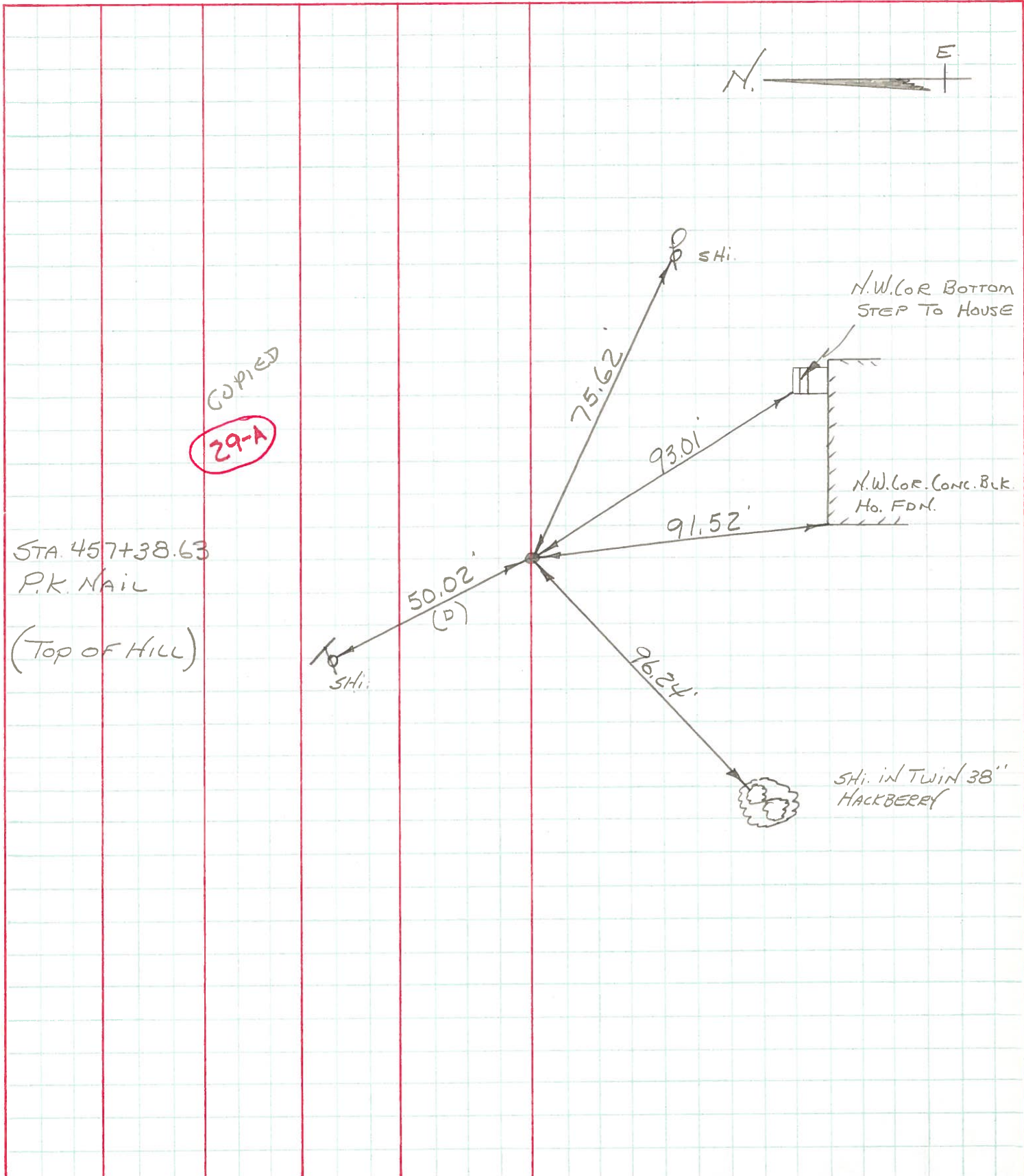
PERSONNEL TITLE PERSONNEL TITLE  
BURNSIDE  
SMITH

COUNTY Wood DATE 5-25-72

S. R. U.S.#6 WEATHER CLEAR

SEC. TEMP. +78°

DESCRIPTION LEFT CENTER LINE RIGHT JOB NO.





# SEE NEW TIES

PERSONNEL

TITLE

PERSONNEL

TITLE

COUNTY Wood.

DATE May, 15, 1968

Morrison

Bowers

Holcombe

Fern.

S. R. 45#6

WEATHER Pf Cloudy,

SEC. \_\_\_\_\_

TEMP. +84°

DESCRIPTION

Ties to Control Points.

LEFT

CENTER LINE

RIGHT

JOB NO. \_\_\_\_\_

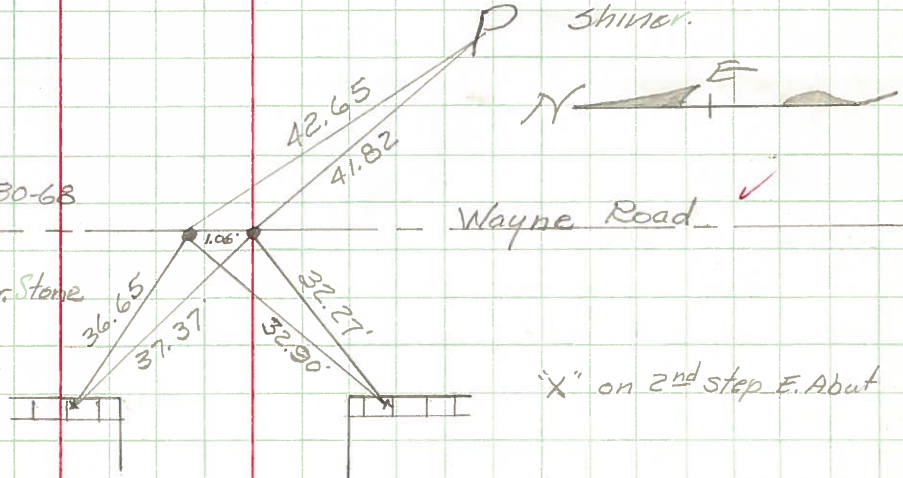
**31**

Sta. 490+09.65

Set P.K. Nails from ties 4-30-68

P.I. is 106' W. of Cor. Stone  
P.K. to the south is over Cor. Stone

"X" on 2nd step E. Abut.



Sta. 476+86.28

P.K. Nail.

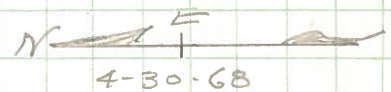
Shiner T 36.90'

26.40'

26.59'

"X" in face of Conc. Cor Post.

**30-A**



Sta. 463+60.82

Set P.K. Nail & Shiner

S. 1/4 Sec. #28

Freedom Twp.

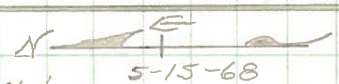
Shiner T

45.92'

37.80

P Spike.

99.85'



Garage

Breez Way.

N.E. Cor of House foundation

House

**30**

Sta. 457+38.63

P.K. Nail

(Top of 4/11)

Shiner T

50.02'

75.66' P Shiner

93.03'

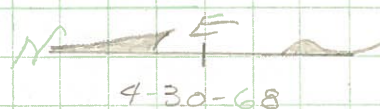
91.51'

N.W. Cor of Bottom step.

Frame Pcs.

N.W. Cor House foundation.

**29-R**





PERSONNEL TITLE PERSONNEL TITLE

COUNTY Wood

DATE OK 3-1-55

S.R. U.S. #6

OK 12-30-57

WEATHER

SEC.

TEMP.

DESCRIPTION

LEFT

CENTER LINE

RIGHT

JOB NO.

DESCRIPTION	LEFT	CENTER LINE	RIGHT	JOB NO.
Sta. 423+82.15 E.R. Spike		Shiner in Fence Post South 40.77 Shiner in Fence Post North, 39.21	✓ X in SW Cor CB. SSE. under lid. 26.30 Shiner in T.P. N.E. 52.14' Shiner in P.P. S. 20.89 Shiner in P.P. S.W. 102.0'	
	#50-A			
Sta. 437+06 P.K. nail OK 12-30-57			X on C.B. N.E. 34.19 Shiner in P.P. S.E. 147.35 Iron stake on fence line SE. 50.45 X on W. Wall C.B. S.E. 33.14	
	#51			
Sta. 437+06 Boat spk. over mon. S.W. Cor. sec. 28 OK 12-30-57		CK. 5-460 1-30-68	N.E. Cor. Conic, C.B. S.E. 23.72 Shiner in T.P. N. 23.84' " " Cor. post N. 39.25 <sup>22</sup> " " " " S. 40.94 41.00 Iron sign stake SE. 50.45 <sup>.42</sup>	
(29)	#51-A			
Sta. 457+38.63. E.R. Spk. P.I. OK 12-30-57		1-30-68	✓ Shiner in P.P. S.E. 75.66 ✓ Shiner in P.P. S.E. 77.88 ✓ N.W. Cor. house Fdn. S. 91.51 Hackberry Tree S.W. 96.70 97.70' ✓ Shiner in T. Pole N.W. 50.02'	
(29-A)	#52			
Sta. 463+60.82 Cor. Stone (Did not find)			Spike in P.P. S. 33.62 Shiner in 5' Apple S.W. 52.98	
	#53			