

O.D.O.T. DISTRICT 2 SURVEY OFFICE (USE ONLY)

PERSONNEL

REFERENCE NO. 30

SHEET 2 OF 14

NOTES RHOADES
 H.C. LEU
 R.C. GARRETT
MAHLER

DATE 6/26/20
 WEATHER SUNNY
 TEMP. 80°

ROUTE US 6
 COUNTY WOOD
 TOWNSHIP FREEDOM
 SECTION 28

DWG BY NIESE PID 101242

T 5 N R 12 E

TYPE MONUMENT P.K.SHANK

ON SURFACE - ~~BELOW~~ ON

OFFSET \odot PAVEMENT ON LT : RT

12.0' TO RT EDGE PAVEMENT

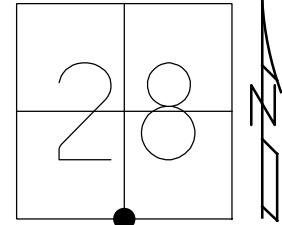
STATION: 1145+95.08

HORIZ.DATUM: NAD83 2011

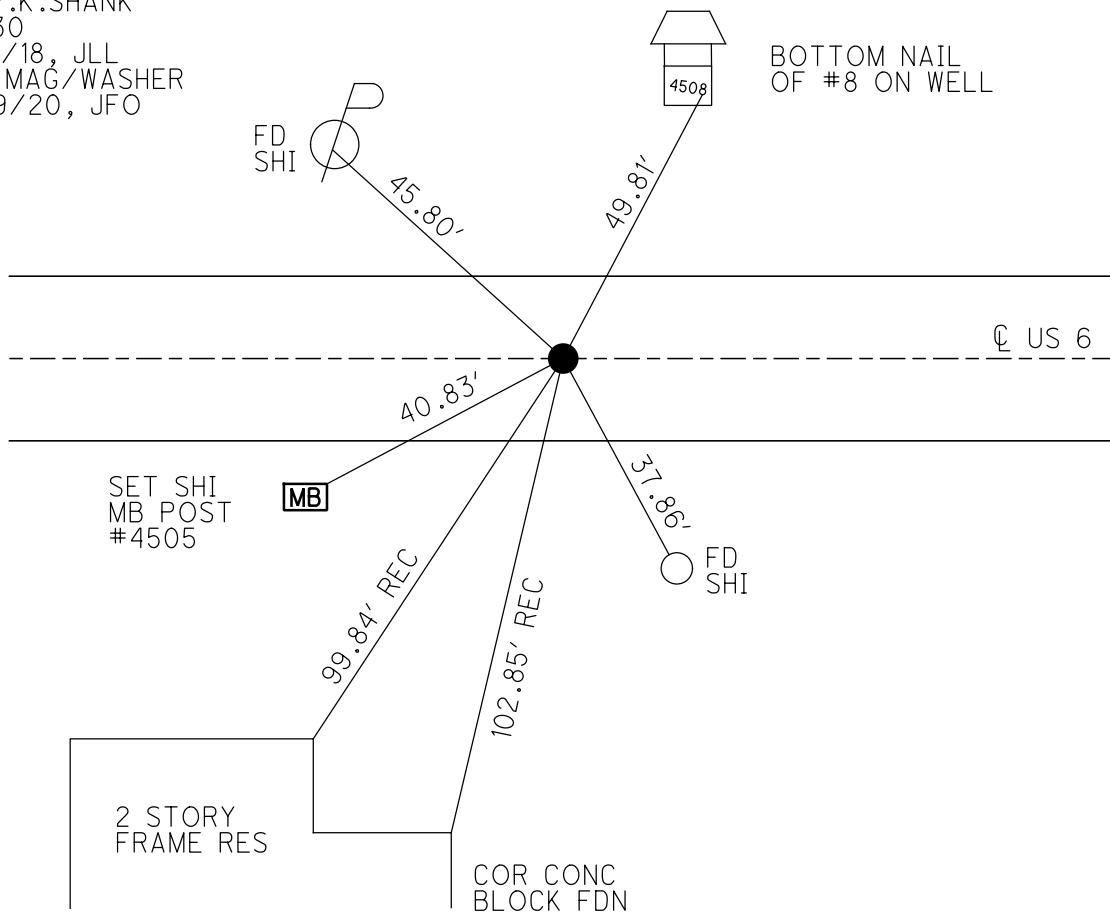
GEOID: NAVD88 2012A

GRID: NORTHING: 616766.233

EASTING: 1698220.214



RECORD:
 STA. 463+60.82
 FD SM.R.R.SPIKE
 7/19/94, CL
 SET P.K./WASHER
 10/03/94
 FD P.K.SHANK
 REF30
 9/12/18, JLL
 SET MAG/WASHER
 9/29/20, JFO



O.D.O.T. DISTRICT 2 SURVEY OFFICE

PERSONNEL _____

REFERENCE NO. 30

SHEET 3 OF 10

NOTES LOEHRKE

H.C. RIPPLE

R.C. BARROUR

DATE 7-19-54

WEATHER FAIR

TEMP. 47.5

ROUTE U.S. 6

COUNTY WOOD

TOWNSHIP FREEDOM

SECTION 28

T. S R. R E.

Set P.K. / WASHEE

TYPE MONUMENT Sm R.R. Spike

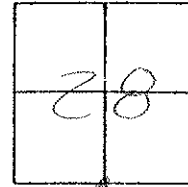
10-3-54

ON SURFACE - BELOW Yes

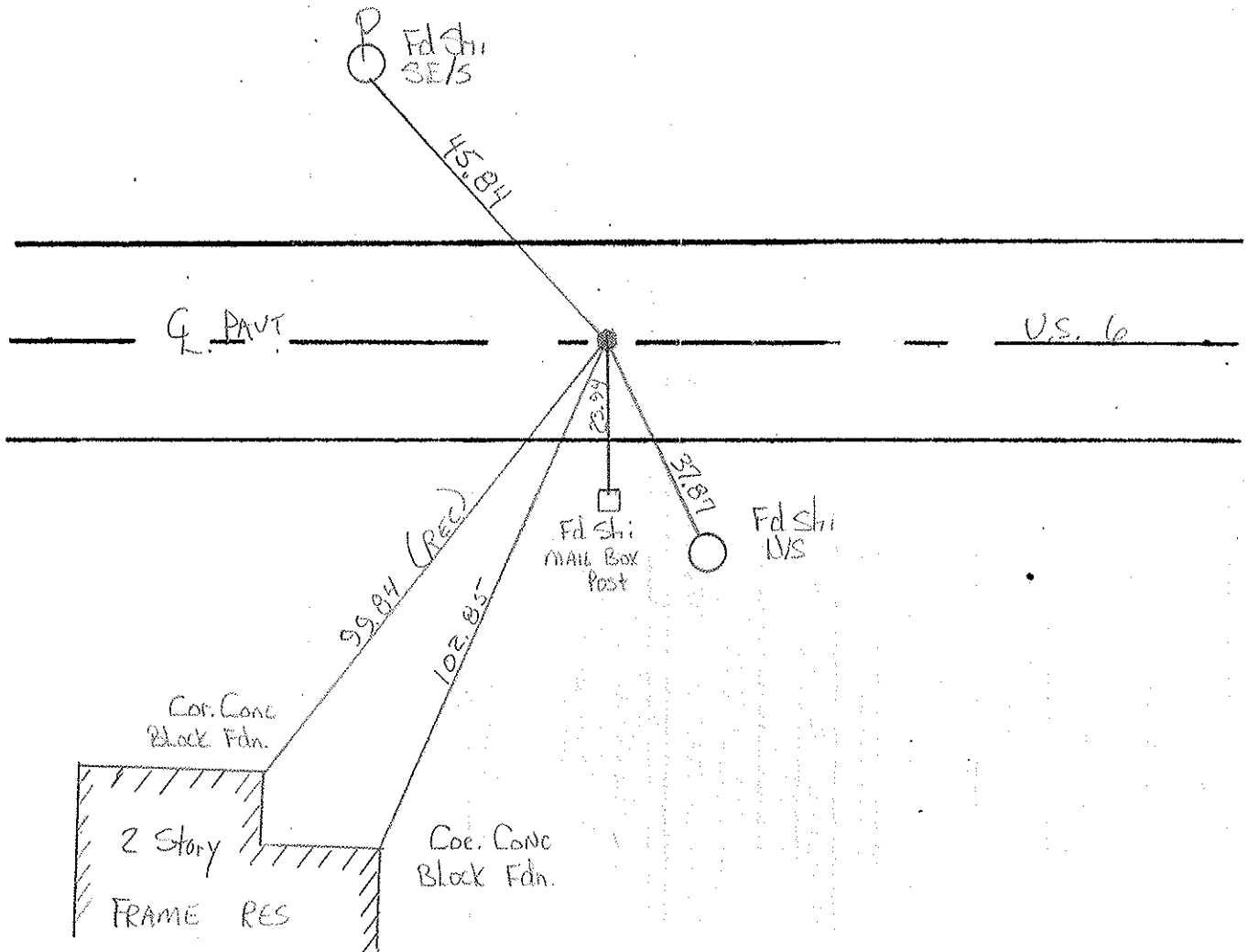
LEFT - C. PAV'T. - RIGHT Yes

120 TO RT. EDGE PAVEMENT

S.L.M. 114B+47



Record Sta 462+60.82



County Woods S.R. 456

Date 3-20-85

Township FREEDOM

Weather CLEAR

Section 28

Temp. 40°

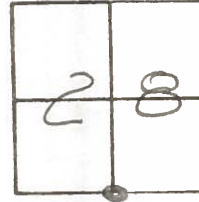
TSN, RQE

Personnel Hoffman

LOEHRKE H.C.

BARNHISEL R.C.

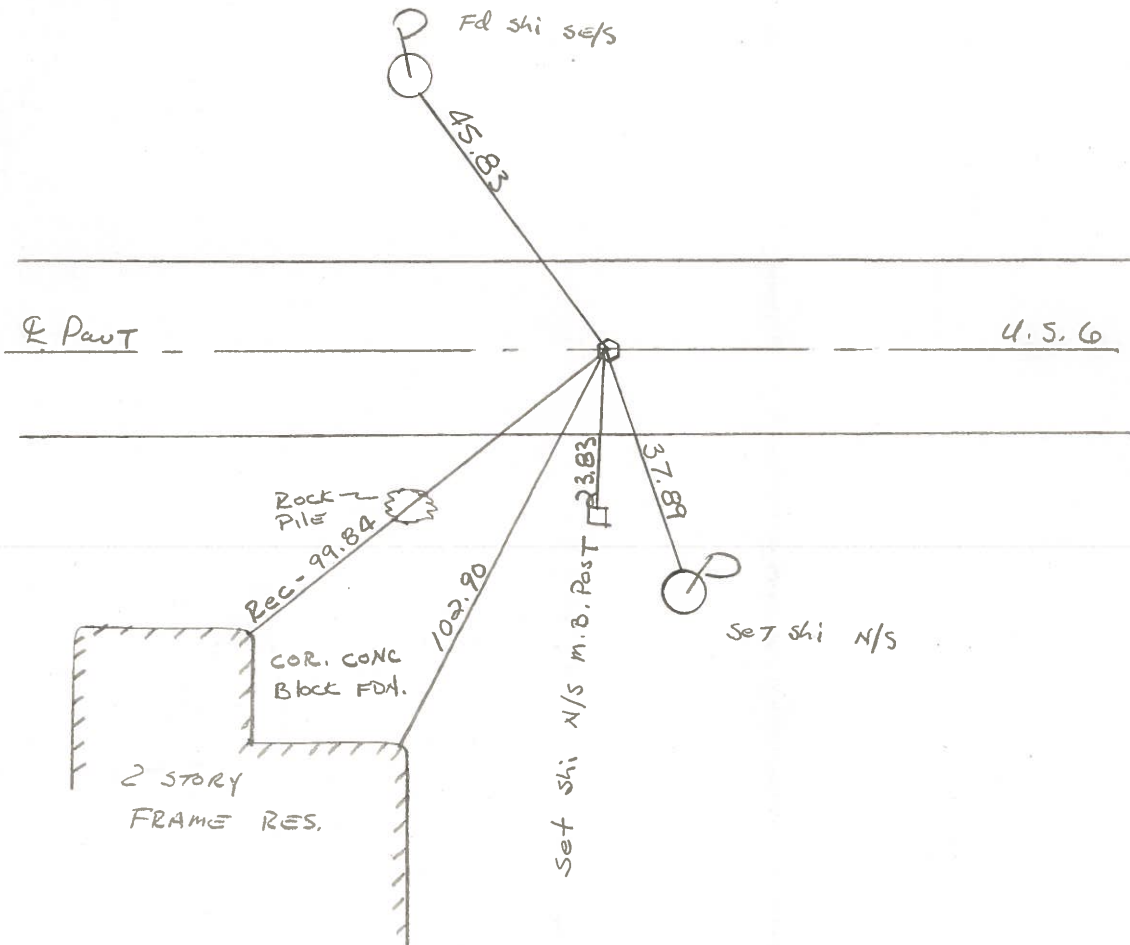
#30



Fd small R.R. SPK @ surface
 ON & PAWT
 9.9' TO LT. F.P.

SLM 1148+68
 Set small R.R. SPK
 8-30-85 SWH

Record:
 463+60.82



County WOOD U.S. 6

Date 5-25-72

Township FREEDOM

Weather CLEAR

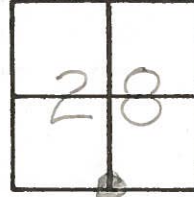
Section 28

Temp. 80'

TSN, RIZE

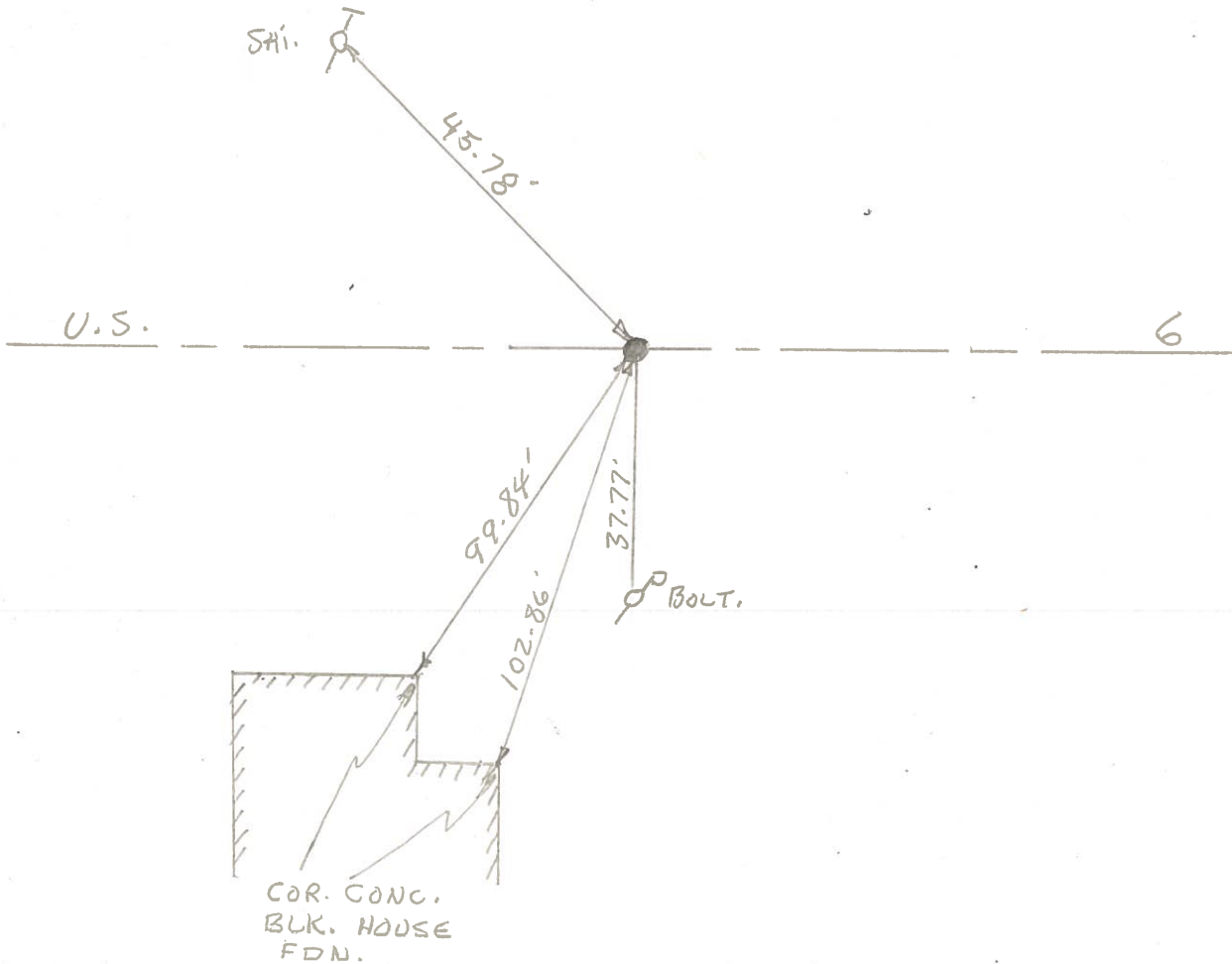
Personnel BURNSIDE

SMITH



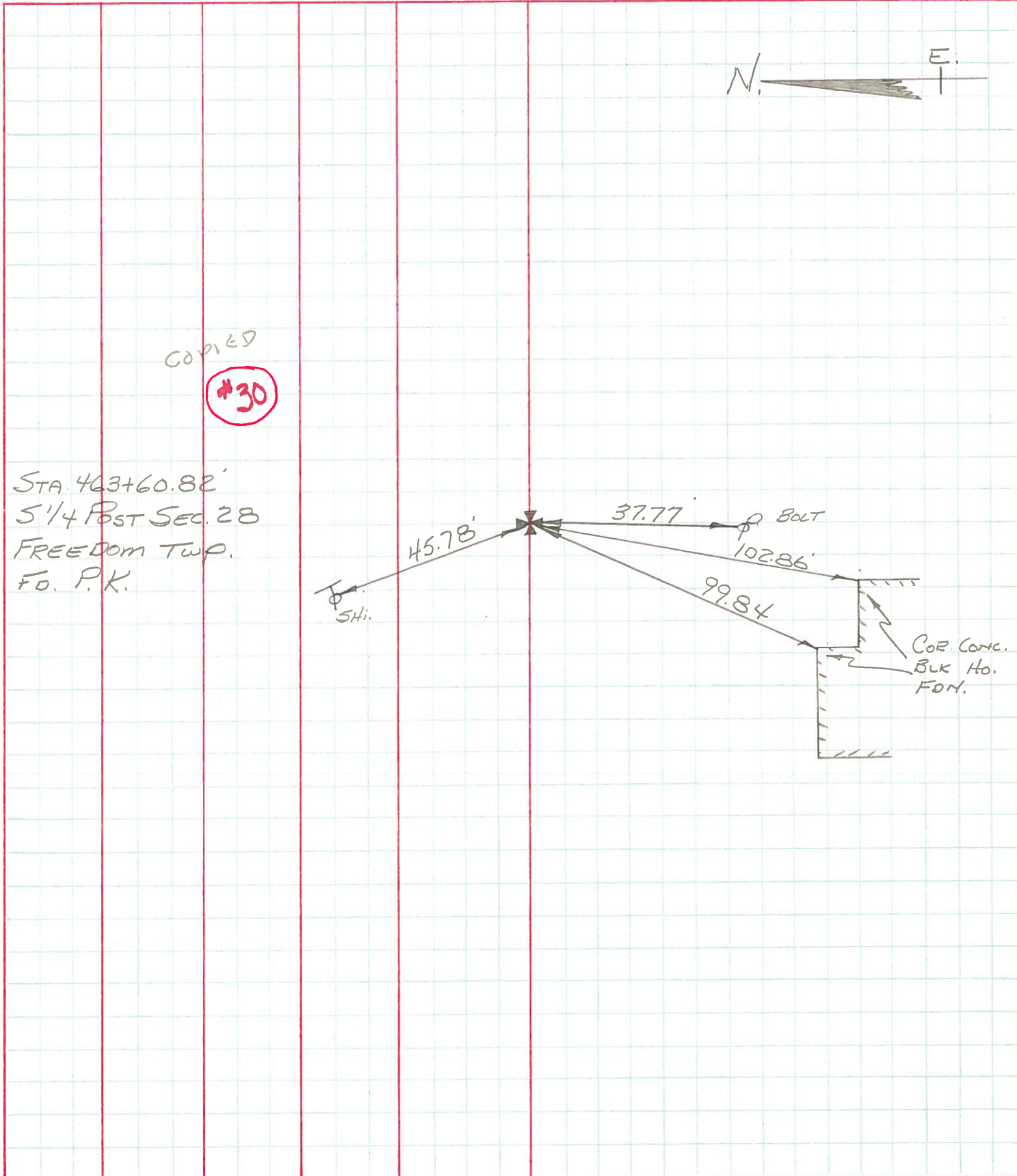
#30

STA. 463+60.82'
S. 1/4 POST SEC. 28
FP. P.K. NAIL



PERSONNEL	TITLE	PERSONNEL	TITLE	COUNTY	DATE	S. R.	WEATHER	SEC.	TEMP.
BURNSIDE				Wood	5-25-72	U.S. #6	CLEAR		+80°
SMITH									

DESCRIPTION _____ LEFT _____ CENTER LINE _____ RIGHT _____ JOB NO. _____



COPIED

#30

STA. 463+60.82'
 5 1/4 Post Sec. 28
 FREEDOM TWP.
 FO. P.K.

PERSONNEL

TITLE

PERSONNEL

TITLE

COUNTY Wood.

DATE May, 15, 1968

Morrison

Bowers

Holcombe

Fern.

S. R. 115#6

WEATHER Pt Cloudy.

SEC.

TEMP. +84°

DESCRIPTION

Ties to Control Points.

LEFT

CENTER LINE

RIGHT

JOB NO.

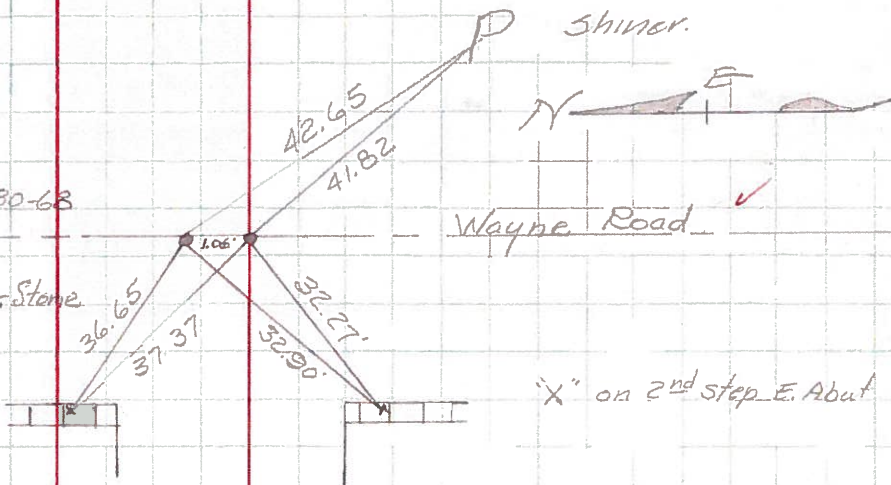
31

Sta. 490+09.65

Set P.K. Nails from ties 4-30-68

Pt. is 106' W. of Cor. Stone
P.K. to the south is over Cor. Stone

"X" on 2nd Step E. Abut.



Sta. 476+86.28

P.K. Nail.

30-A

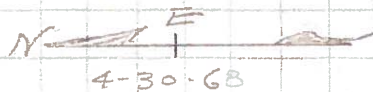
Shiner T

36.90'

26.40'

26.59'

"X" in face of Conc. Cor Post.



Sta. 463+60.82

Set P.K. Nail & Shiner

S. 1/4 Sec #28

Freedom Twp.

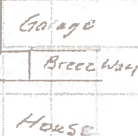
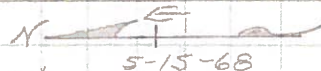
Shiner T

45.92'

37.80'

99.85'

N.E. Cor of House Foundation



30

Sta. 457+38.63

P.K. Nail

(Top of Hill)

Shiner T

50.02'

75.66'

93.03'

91.51'

N.W. Cor of Bottom Step.

Frame Res.

N.W. Cor House Foundation.



29-A

PERSONNEL TITLE PERSONNEL TITLE

COUNTY Wood

DATE

S.R. U.S #6

WEATHER

SEC.

TEMP.

DESCRIPTION

LEFT

CENTER LINE

RIGHT

JOB NO.

Sta. 463+60.82 Shiner over mon. 5/4 post sec. 28		5-4-60	10" walnut N.E.	50.62'
			12" wild cherry N.W.	34.42'
			T.P. S.E.	38.23'
(30) #53-A			Spk. P. Pole S	37.80'
			Shiner T. Pole N.W.	45.92'
			N.E. Cor. Conc. Foundation of Ho SW	99.85'
Sta. 476+86.28 P.K. nail OK 12-13-57		5-4-60	C.B. N.N.E. Gone	23.35'
			B.R. Post S.S.E. Gone	27.0
			X in Conc. Post S.	26.40'
			Shiner in P.P.S.S.W. 26.53	26.55'
			Shiner in T.P. N.	36.90'
Sta. 490+09.65 Cor. Stone. P.L. E.P. spike is 1.06' N. set. P.K. Nails from 12-30-68		5-4-60	X N. end E. abut.	37.37'
			X S. end E. abut.	32.27'
			Shiner in T.P. SE.	41.82'
WAYNE ROAD (31) #55			X N. end E. abut.	36.65'
			X S. end E. abut.	32.90'
			Shiner in T.P. SE.	42.65'
P.L. Sta. 358+85.30 Iron pin (Did not find 12-30-57) (1st P.L. EAST OF WAYNE ROAD)		5-4-60	S.W. Cor. Garage E.	109.6'
			P.P. E.N.E.	40.93'
			S.E. Cor. tool shed N.E.	50.5'
			S.W. Cor. tool shed N.N.E.	35.0'
			S.W. Cor. of W. side of Barn N.	115.7'
			Pole N.N.W.	10.7'
(32) #56			X in N.E. Cor. of N. Wall. of C.B. S.W.	38.18'

Could not find 4-30-68 set P.K. Nail and shiner on E.P. Poles on new P.L. SW. House. SW. 5-15-68.

4-30-68

Cor Stone

P.P. SAK P.L.